



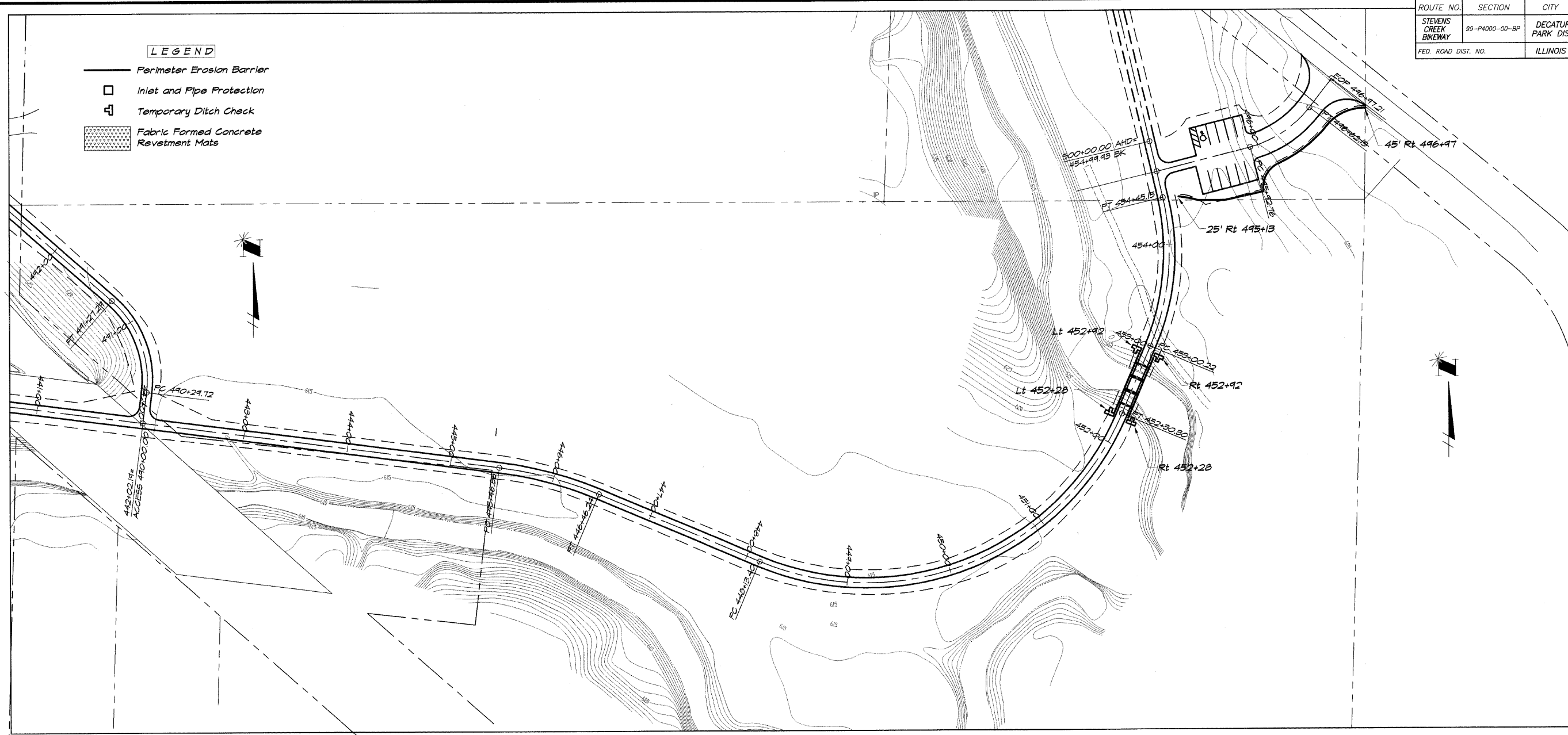


ROUTE NO.	SECTION	CITY	TOTAL SHEETS	SHEET NO.
STEVENS CREEK BIKEWAY	99-P4000-00-BP	DECATUR PARK DIST	145	45
FED. ROAD DIST. NO.		ILLINOIS	PROJECT TE-0007(27)	

**LEGEND**

-  Perimeter Erosion Barrier
-  Inlet and Pipe Protection
-  Temporary Ditch Check
-  Fabric Formed Concrete Revetment Mats



**BAINBRIDGE & ASSOCIATES, INC.**  
**GEE MILANSKI**  
 Consulting Engineers  
 SOUTH TAYLORS ROAD  
 DECATUR, ILLINOIS  
 Illinois License 184-071225

REVISIONS	NO.	BY	DATE

DESIGNED	SCALE
MHP	1" = 50'
DRAWN	DATE
P m/s	May, 2002
FIELD BOOK	JOB NO.
XXX	910294

**DECATUR PARK DISTRICT**  
**STEVENS CREEK BIKEWAY - PHASE I**  
**EROSION CONTROL PLAN**