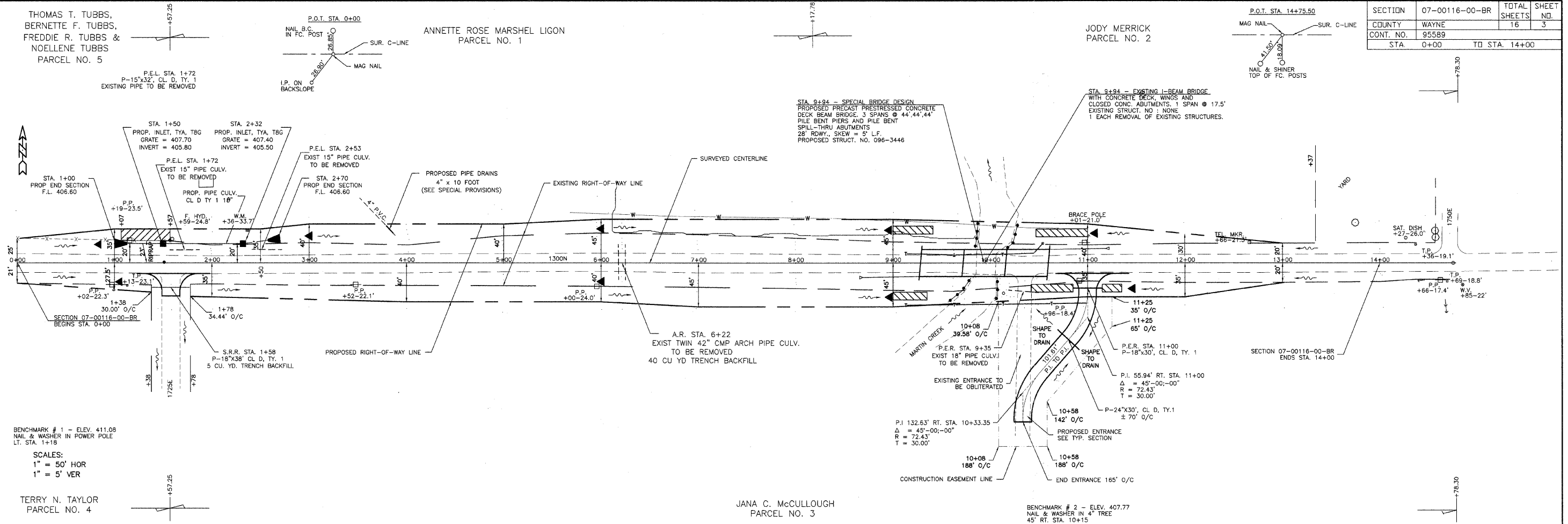


THOMAS T. TUBBS,
BERNETTE F. TUBBS,
FREDDIE R. TUBBS &
NOELLENE TUBBS
PARCEL NO. 5

ANNETTE ROSE MARSH LIGON
PARCEL NO. 1

JODY MERRICK
PARCEL NO. 2

SECTION	07-00116-00-BR	TOTAL SHEETS	16	SHEET NO.	3
COUNTY	WAYNE				
CONT. NO.	95589				
STA.	0+00	TO STA.	14+00		



BENCHMARK # 1 - ELEV. 411.08
NAIL & WASHER IN POWER POLE
LT. STA. 1+18

SCALES:
1" = 50' HOR
1" = 5' VER

TERRY N. TAYLOR
PARCEL NO. 4

JANA C. McCULLOUGH
PARCEL NO. 3

BENCHMARK # 2 - ELEV. 407.77
NAIL & WASHER IN 4" TREE
45' RT. STA. 10+15

430	AGGREGATE BASE COURSE, TYPE B STA. 0+00 TO STA. 9+23 = 1122 TONS STA. 10+59 TO STA. 14+00 = 412 TONS S.R.R. STA. 1+58 = 86 TONS TOTAL = 1560 TONS	POROUS GRANULAR BACKFILL P.E.L. STA. 1+72 = 4 CU YD P.E.L. STA. 2+53 = 4 CU YD TOTAL = 8 CU YD	EARTHWORK QUANTITIES EARTH EXCAVATION = 2074 CU. YD. EARTH EXCAVATION ADJ. 25% = 1556 CU. YD. CHANNEL EXCAVATION = 615 CU. YD. CHANNEL EXCAVATION ADJ. 25% = 461 CU. YD. EMBANKMENT = 2957 CU. YD. FURNISHED EXCAVATION = 940 CU. YD.	STONE RIPRAP DITCH LT. STA. 9+00 TO STA. 9+41 = 16 TONS RT. STA. 9+00 TO 9+35 = 14 TONS LT. STA. 10+47 TO STA. 11+00 = 21 TONS RT. STA. 10+42 TO 10+88 = 17 TONS RT. STA. 11+15 TO STA. 11+35 = 8 TONS TOTAL = 76 TONS	SEEDING, CLASS 2 (SPECIAL) STA. 0+00 TO STA. 14+00 = 1.7 ACRES	TRAFFIC BARRIER TERMINAL, TYPE 5A APPROACH CORNERS OF BRIDGE = 2 EACH TRAFFIC BARRIER TERMINAL, TYPE 1, SPECIAL(TANGENT) APPROACH CORNERS OF BRIDGE = 2 EACH TERMINAL MARKER - DIRECT APPLIED APPROACH CORNERS OF BRIDGE = 2 EACH	CONSTRUCT TRANSITION FROM EXISTING RDWY. TO PROP. RDWY. STA. 0+00 TO STA. 1+00 STA. 12+78 TO STA. 13+78 QUANTITIES INCLUDED IN THOSE LISTED.	430
425	AGGREGATE SURFACE COURSE, TYPE B P.E.L. STA. 1+72 = 10 TONS P.E.L. STA. 2+53 = 10 TONS P.E.R. STA. 11+00 = 50 TONS TOTAL = 70 TONS	PIPE CULVERTS, CLASS D, TYPE 1 18" LT. STA. 1+00 TO STA. 1+50 = 49 FOOT LT. STA. 1+50 TO STA. 2+32 = 80 FOOT LT. STA. 2+32 TO STA. 2+70 = 37 FOOT TOTAL = 166 FOOT	STEEL END SECTIONS 18" LT. STA. 1+00 = 1 EACH LT. STA. 2+70 = 1 EACH TOTAL = 2 EACH	STONE DUMPED RIPRAP, CL A3 LT. STA. 1+07 TO STA. 1+57 = 33 TON (SEE SPECIAL PROVISIONS)	TEMPORARY DITCH CHECKS LT. STA. 1+00 = 12 FT RT. STA. 1+45 = 12 FT LT. STA. 3+00 = 12 FT LT. & RT. STA. 6+00 = 24 FT LT. & RT. STA. 9+00 = 24 FT RT. STA. 11+40 = 12 FT LT. STA. 11+05 = 12 FT TOTAL = 108 FEET	EROSION CONTROL BARRIER TOE OF CHANNEL SLOPES @ 4 CORNERS OF BRIDGE = 100 FOOT	425	
420	PIPE CULVERT REMOVAL P.E.L. STA. 1+72 = 30 FOOT P.E.L. STA. 2+53 = 30 FOOT A.R. STA. 6+22 = 72 FOOT P.E.R. STA. 9+35 = 30 FOOT TOTAL = 162 FOOT						420	
415							415	
410							410	
405							405	
400							400	
395							395	
390							390	
385							385	