

**GENERAL NOTES:**

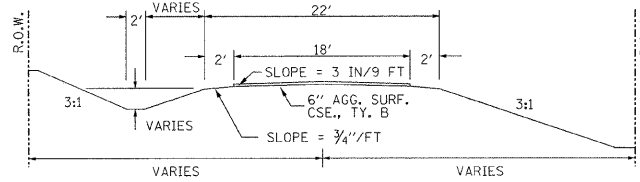
THIS SECTION SHALL BE CONSTRUCTED IN ACCORDANCE WITH THE PLANS, SPECIAL PROVISIONS AND "STANDARD SPECIFICATIONS FOR ROAD AND BRIDGE CONSTRUCTION", ADOPTED JANUARY 1, 2007.

THE WORK INVOLVED ON THIS SECTION CONSISTS OF THE REMOVAL OF THE EXISTING STRUCTURE, THE CONSTRUCTION OF A 50 FOOT LONG SINGLE SPAN PRECAST, PRESTRESSED CONCRETE BEAM BRIDGE, EARTH APPROACHES, AGGREGATE SURFACE COURSE AND OTHER MISCELLANEOUS ITEMS NECESSARY TO COMPLETE THIS SECTION.

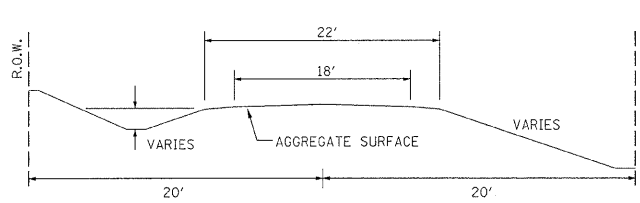
ALL ELEVATIONS ARE BASED ON U.S.G.S. MEAN SEA LEVEL DATUM.

IT SHALL BE THE CONTRACTOR'S RESPONSIBILITY TO CONTACT ALL THE UTILITIES, AFFECTING THE PROJECT, PRIOR TO CONSTRUCTION.

**TYPICAL CROSS SECTION PROPOSED**



**TYPICAL CROSS SECTION EXISTING**



**UTILITIES:**

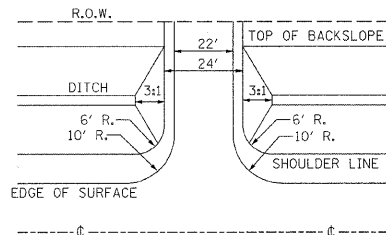
J.U.L.I.E. 1-800-892-0123

VERIZON  
1-618-395-6191

WAYNE-WHITE ELECTRIC CO-OP  
1-618-842-2196

ELLERY WATER CORP.  
1-618-838-7116

**FIELD ENTRANCE DETAIL**



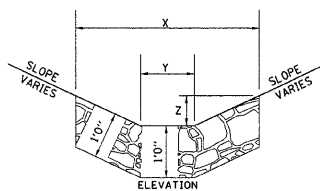
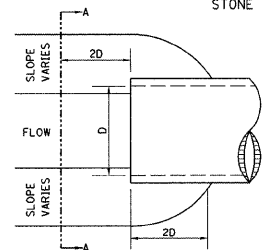
NOTE: CONSTRUCT SPECIAL DITCH

STA 3+00 TO STA 4+78 LT  
STA 5+25 TO STA 6+75 LT

NOTE: CONSTRUCT STONE RIPRAP DITCH

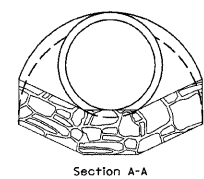
STA 4+50 LT TO STA 4+78 LT (0.62 TON/LIN FT)  
STA 5+25 LT TO STA 5+85 LT (0.62 TON/LIN FT)  
55 TON STONE RIPRAP DITCH ALLOWED IN PROPOSAL.

**STONE RIPRAP DITCH DESIGN**

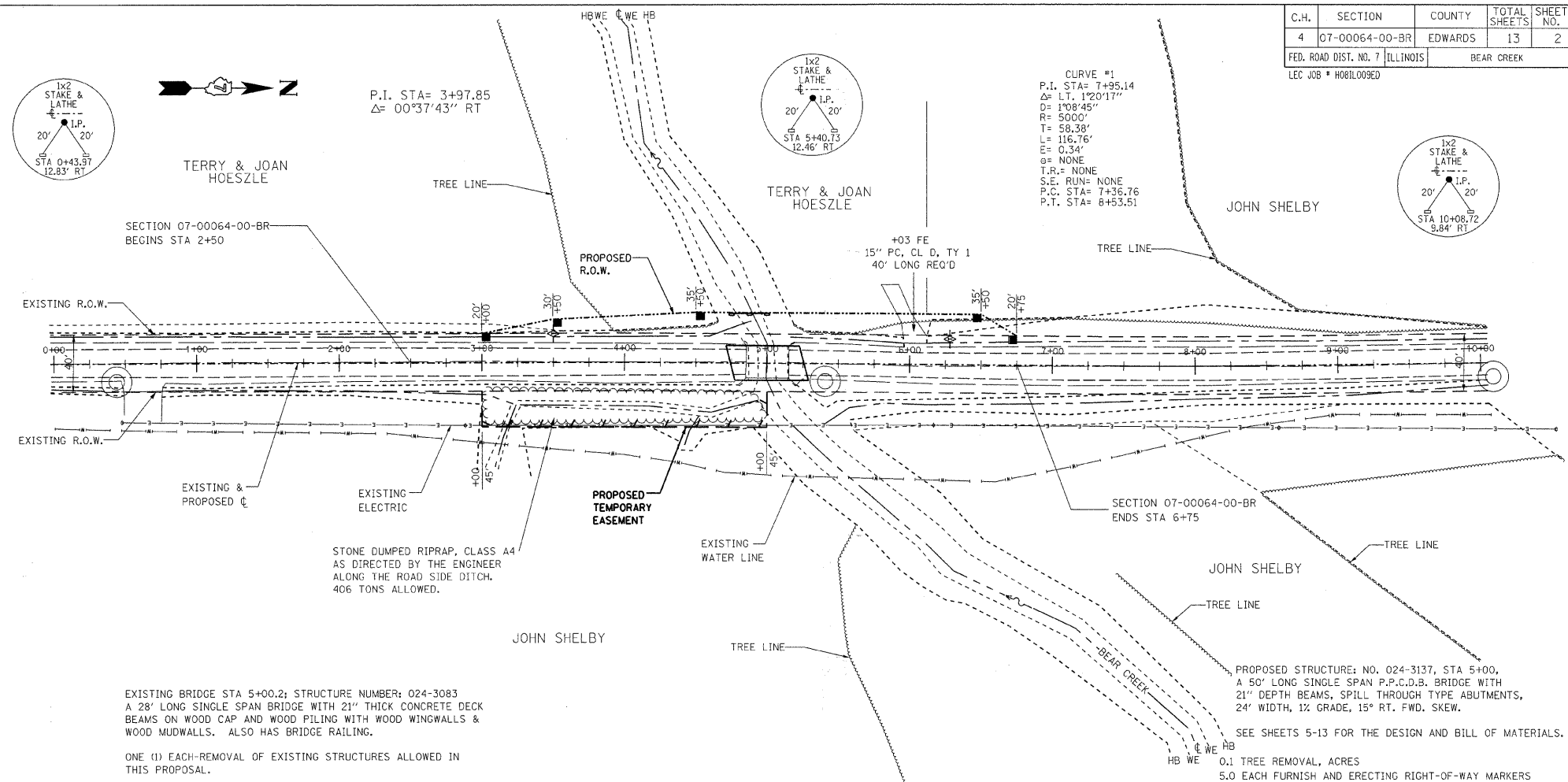


NOTE:

BOTTOM OF DITCH	SLOPE		
	1 1/2:1	2:1	3:1
2 FT	X= 5 FT	6 FT	8 FT
	Y= 2 FT	2 FT	2 FT
	Z= 1 FT	1 FT	1 FT
	0.40	0.48	0.62 TON/LIN. FT



NOTE: FOR PLACEMENT, QUALITY GRADATION AND OTHER MISCELLANEOUS REQUIREMENTS FOR STONE RIPRAP DITCH-SEE SPECIAL PROVISIONS.



P.I. STA= 3+97.85  
Δ= 00°37'43" RT

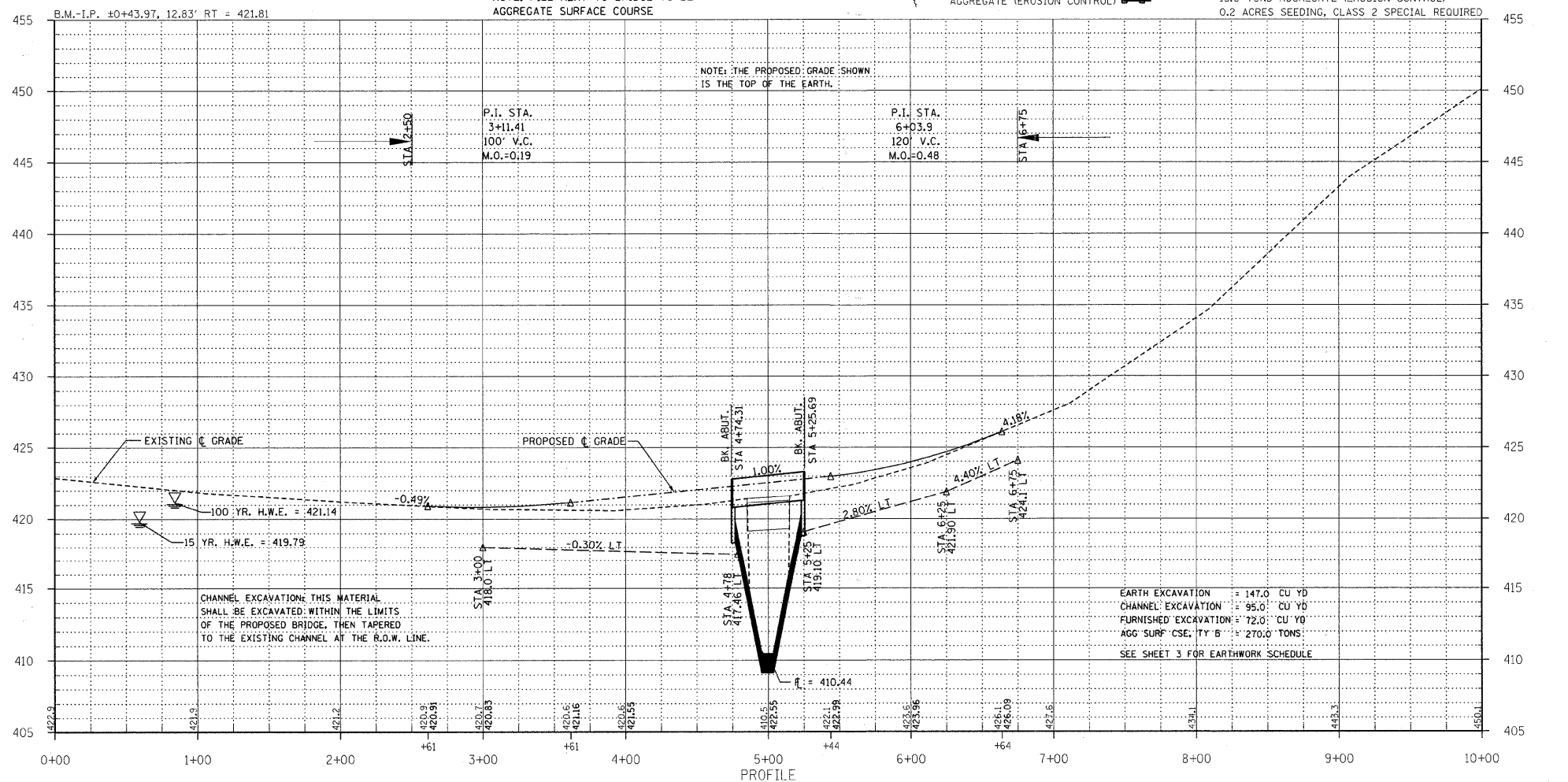
CURVE #1  
P.I. STA= 7+95.14  
Δ= LT. 1°20'17"  
D= 1'08'45"  
R= 500.0'  
T= 58.38'  
L= 116.76'  
E= 0.34'  
θ= NONE  
T.R.= NONE  
S.E. RUN= NONE  
P.C. STA= 7+36.76  
P.T. STA= 8+53.51

STONE DUMPED RIPRAP, CLASS A4 AS DIRECTED BY THE ENGINEER ALONG THE ROAD SIDE DITCH. 406 TONS ALLOWED.

EXISTING BRIDGE STA 5+00.2; STRUCTURE NUMBER: 024-3083  
A 28' LONG SINGLE SPAN BRIDGE WITH 21" THICK CONCRETE DECK BEAMS ON WOOD CAP AND WOOD PILING WITH WOOD WINGWALLS & WOOD MUDWALLS. ALSO HAS BRIDGE RAILING.

ONE (1) EACH-REMOVAL OF EXISTING STRUCTURES ALLOWED IN THIS PROPOSAL.

NOTE: FILL NEXT TO BRIDGE TO BE AGGREGATE SURFACE COURSE



TEMPORARY DITCH CHECKS  
AGGREGATE (EROSION CONTROL)

PROPOSED STRUCTURE: NO. 024-3137, STA 5+00. A 50' LONG SINGLE SPAN P.P.C.D.B. BRIDGE WITH 21" DEPTH BEAMS, SPILL THROUGH TYPE ABUTMENTS, 24' WIDTH, 1% GRADE, 15° RT. FWD. SKEW.

SEE SHEETS 5-13 FOR THE DESIGN AND BILL OF MATERIALS.  
0.1 TREE REMOVAL, ACRES  
5.0 EACH FURNISH AND ERECTING RIGHT-OF-WAY MARKERS  
12.0 FEET TEMPORARY DITCH CHECKS  
18.0 TONS AGGREGATE (EROSION CONTROL)  
0.2 ACRES SEEDING, CLASS 2 SPECIAL REQUIRED

C.H.	SECTION	COUNTY	TOTAL SHEETS	SHEET NO.
4	07-00064-00-BR	EDWARDS	13	2

323 W. 3RD ST.  
P.O. BOX 160  
MT. CARMEL, IL  
62863

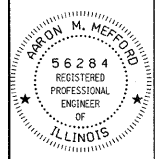
PHONE:  
(618)-262-8651  
FAX:  
(618)-263-3327

405 W. STATE ST.  
SUITE 1  
PRINCETON, IN  
47670

PHONE:  
(812)-386-7611  
FAX:  
(812)-385-2812



PROFESSIONAL DESIGN FIRM  
LAND SURVEY & PROFESSIONAL ENGINEERING CORPORATION  
184-000897  
(62-032435)(35-002769)



AARON M. MEFFORD  
NAME

10-26-09  
DATE

11-30-11  
EXPIRES

BEAR CREEK  
COUNTY HIGHWAY 4  
EDWARDS COUNTY, ILLINOIS

SHEET TITLE:

PLAN & PROFILE

SCALE: VARIES

BY: AMM

DATE: 10/26/09

REV:

2 OF 13 SHEETS

SHEET NO. 2