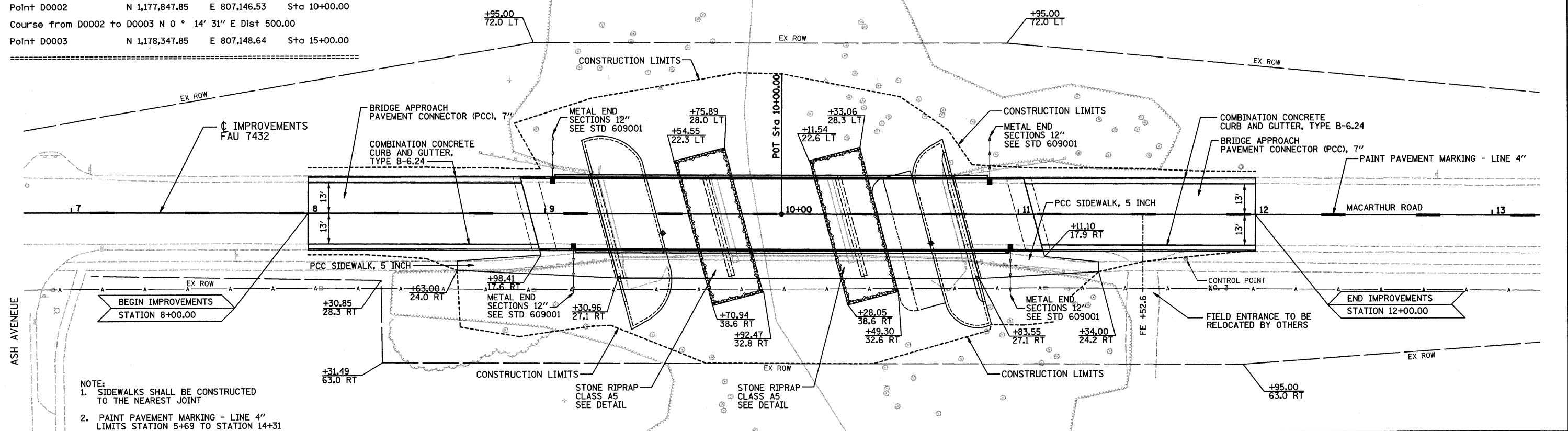


BASELINE COORDINATES

Point D0001 N 1,177,515.85 E 807,145.13 Sta 6+68.00
 Course from D0001 to D0002 N 0° 14' 31" E Dist 332.00
 Point D0002 N 1,177,847.85 E 807,146.53 Sta 10+00.00
 Course from D0002 to D0003 N 0° 14' 31" E Dist 500.00
 Point D0003 N 1,178,347.85 E 807,148.64 Sta 15+00.00

ROUTE NO.	SECTION	COUNTY	TOTAL SHEETS	SHEET NO.
FAU 7432	*	MACON	47	5
STA. TO STA.		PROJECT		
FED. RD. DIST. NO. 7		ILLINOIS		

*08-00602-00-BR



- NOTE:
- SIDEWALKS SHALL BE CONSTRUCTED TO THE NEAREST JOINT
 - PAINT PAVEMENT MARKING - LINE 4" LIMITS STATION 5+69 TO STATION 14+31

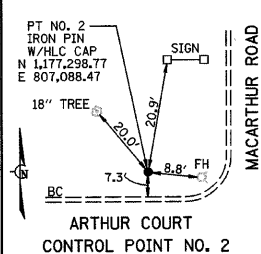
DATE	BY

PLAN
 SURVEYED
 PLOTTED
 NOTED
 GRADES CHECKED
 STRUCTURE NOTATIONS OK'D

BRONNER L. CHASTAIN & ASSOCIATES, LLP
 CONSULTING ENGINEERS
 CHICAGO, ILLINOIS
 312.467.4444
 312.467.4444
 312.467.4444

DATE	BY

PROFILE
 SURVEYED
 PLOTTED
 NOTED
 GRADES CHECKED
 STRUCTURE NOTATIONS OK'D



BENCHMARK 5307-1
 "M" IN MUELLER ON FIRE HYDRANT AT THE INTERSECTION OF MACARTHUR ROAD AND ARTHUR COURT. ELEVATION 643.48

BENCHMARK 5307-2
 "M" IN MUELLER ON FIRE HYDRANT AT THE INTERSECTION OF MACARTHUR ROAD AND ASH AVENUE. ELEVATION 640.03

