

Sheet No. 1
of 26 Sheets

ROUTE NO.	SECTION	COUNTY	TOTAL SHEETS	SHEET NO.
FAU 7432	*	MACON	47	11

08-00602-00-BR

Existing structure SN 058-6005:
The existing bridge is a 148'-2" back to back abutments, 36' out to out of deck, three span PPC deck beam structure on pile bent pier and abutments. It was constructed in 1972 and was built on precast concrete piling at the abutments and piers.
Traffic is to be maintained using Staged Construction.
No salvage.

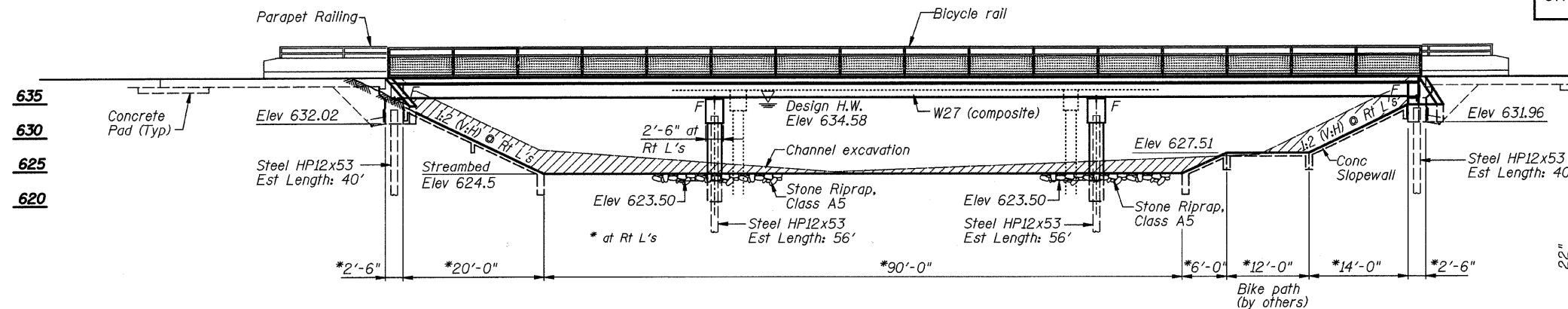
Bench Mark:
BM 5307-1 "M" in Mueller on fire hydrant at the corner of MacArthur Road and Arthur Ct.
Elev 643.48
Bench Mark:
BM 5307-2 "M" in Mueller on fire hydrant at the corner of MacArthur Road and Ash Avenue
Elev 640.03

STEVENS CREEK
BUILT 20 BY
CITY OF DECATUR
SECTION 08-00602-00-BR
PROJECT NO.
STA 10+00.00
STR NO. 058-6025 LOADING HL93

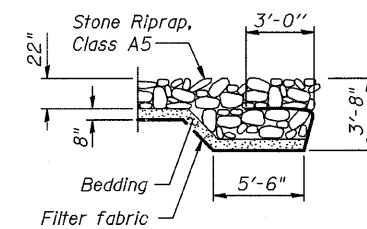
NAME PLATE
See Std. 515001

INDEX OF SHEETS

- 1 General Plan
- 2 General Structure Data
- 3 Foundation Plan and Slope Wall Details
- 4 Stage Construction Details
- 5 Temporary Concrete Barrier For Stage Construction
- 6 Top of Slab Elevations
- 7 Top of Slab Elevations
- 8 Top of South Approach Slab Elevations
- 9 Top of North Approach Slab Elevations
- 10 Bridge Approach Slab Details
- 11 Bridge Approach Slab Details
- 12 Deck Plan And Cross Section
- 13 Superstructure Details
- 14 Superstructure Details
- 15 Superstructure Details
- 16 Bicycle Railing
- 17 Framing Plan and Design Data
- 18 Framing Details
- 19 Bearing Details
- 20 South Abutment Details
- 21 North Abutment Details
- 22 Pier No. 1 Details
- 23 Pier No. 2 Details
- 24 HP Pile Details
- 25 Bar Splicer Assmbly Details
- 26 Cantilever Forming Brackets



ELEVATION



SECTION A-A

DESIGN SCOUR ELEVATION TABLE

Design Scour Elevation (ft.)	Abut. 1	Pier 1	Pier 2	Abut. 2
	632.02	621.50	621.50	631.96

LOADING HL93

Allow 50 lb/sq. ft. for future wearing surface.

DESIGN SPECIFICATIONS

2007 AASHTO LRFD Bridge Design Specifications 4th Edition

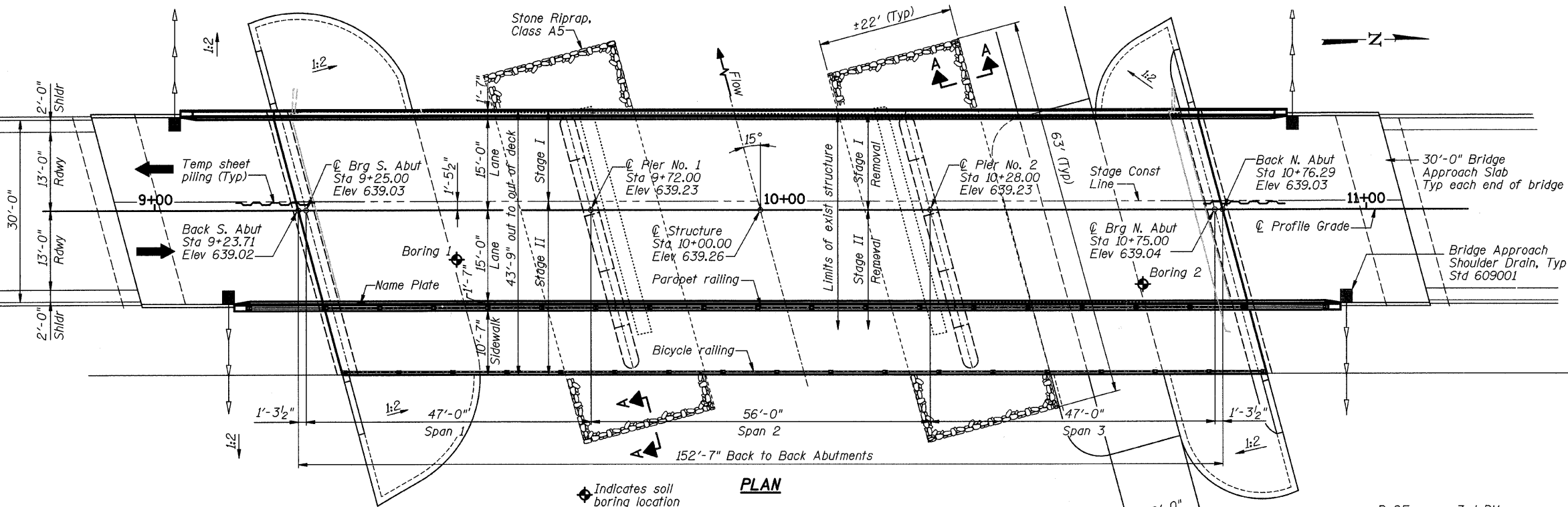
DESIGN STRESSES

FIELD UNITS

f'c = 3,500 psi
fy = 60,000 psi (reinforcement)
fy = 50,000 psi (M270 Grade 50W structural steel)

SEISMIC DATA

Seismic Performance Zone (SPZ) = 2
Bedrock Acceleration Coefficient (A) = .065
Site Coefficient (S) = 2.4

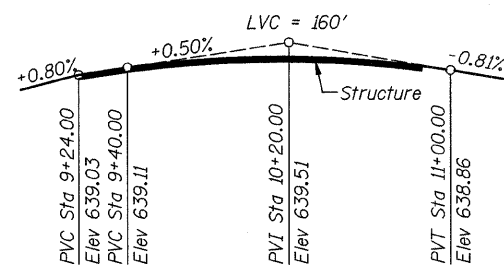


PLAN

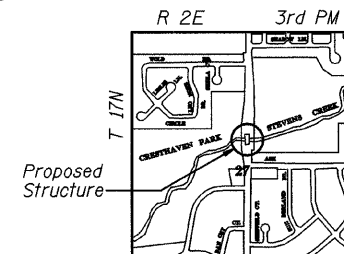
WATERWAY INFORMATION

Drainage Area = 46.01 sq mi Low Grade Elev. 636.77 @ Sta. 15+00

Flood	Freq. Yr.	Q C.F.S.	Opening Sq. Ft.		Nat. H.W.E.	Head - Ft.		Headwater El.	
			Exist.	Prop.		Exist.	Prop.	Exist.	Prop.
Design	30	3,806	1042	1187	634.68	0.26	0.11	634.94	634.79
Base	100	4,966	1131	1290	635.43	0.35	0.17	635.78	635.60
Max. Calc.	500	6,612	1245	1324	636.31	0.17	0.36	636.48	636.67



CONSTRUCTION PROFILE



LOCATION SKETCH



DATE: 11/02/09
EXP: 11/30/10

I CERTIFY THAT TO THE BEST OF MY KNOWLEDGE, INFORMATION AND BELIEF, THIS BRIDGE DESIGN IS STRUCTURALLY ADEQUATE FOR THE DESIGN LOADING SHOWN ON THE PLANS. THE DESIGN IS AN ECONOMICAL ONE FOR THE STYLE OF STRUCTURE AND COMPLIES WITH THE REQUIREMENTS OF THE CURRENT "AASHTO STANDARD SPECIFICATIONS FOR HIGHWAY BRIDGES."

MACARTHUR ROAD (FAU 7432) OVER STEVENS CREEK

GENERAL PLAN

SECTION 08-00602-00-BR		MACARTHUR ROAD (FAU 7432)		DRAWN BY DATE
STA 10+00.00		SN 058-6025		R KING 07/09
		MACON COUNTY		CHECKED BY DATE
				JMB 07/09
				BOOK NUMBER
				486
				PROJECT NO.
				5307
				SHEET NO.

HOMER L. CHASTAIN & ASSOCIATES, LLP
CONSULTING ENGINEERS
184-081297

DECATUR CHICAGO
(317) 422-8544 (773) 714-0050
ROCKFORD
(815) 489-0050