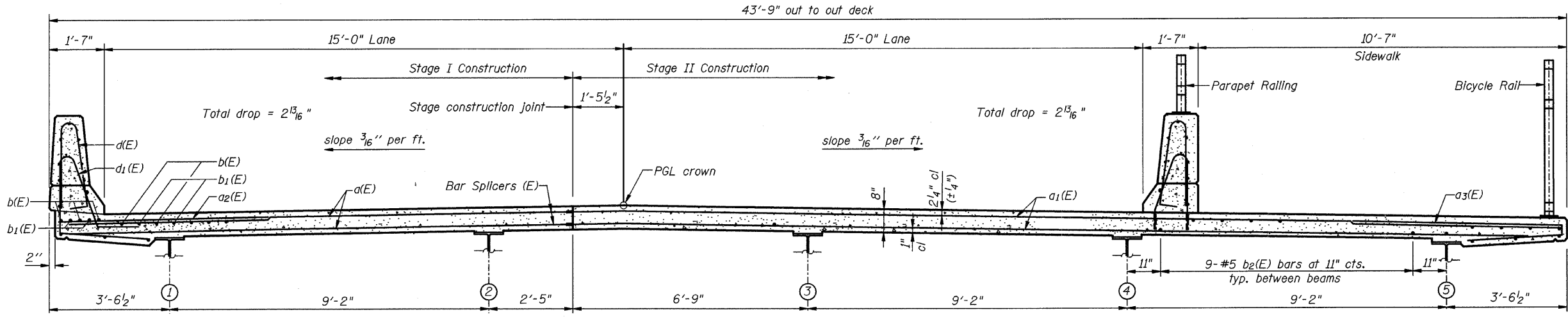
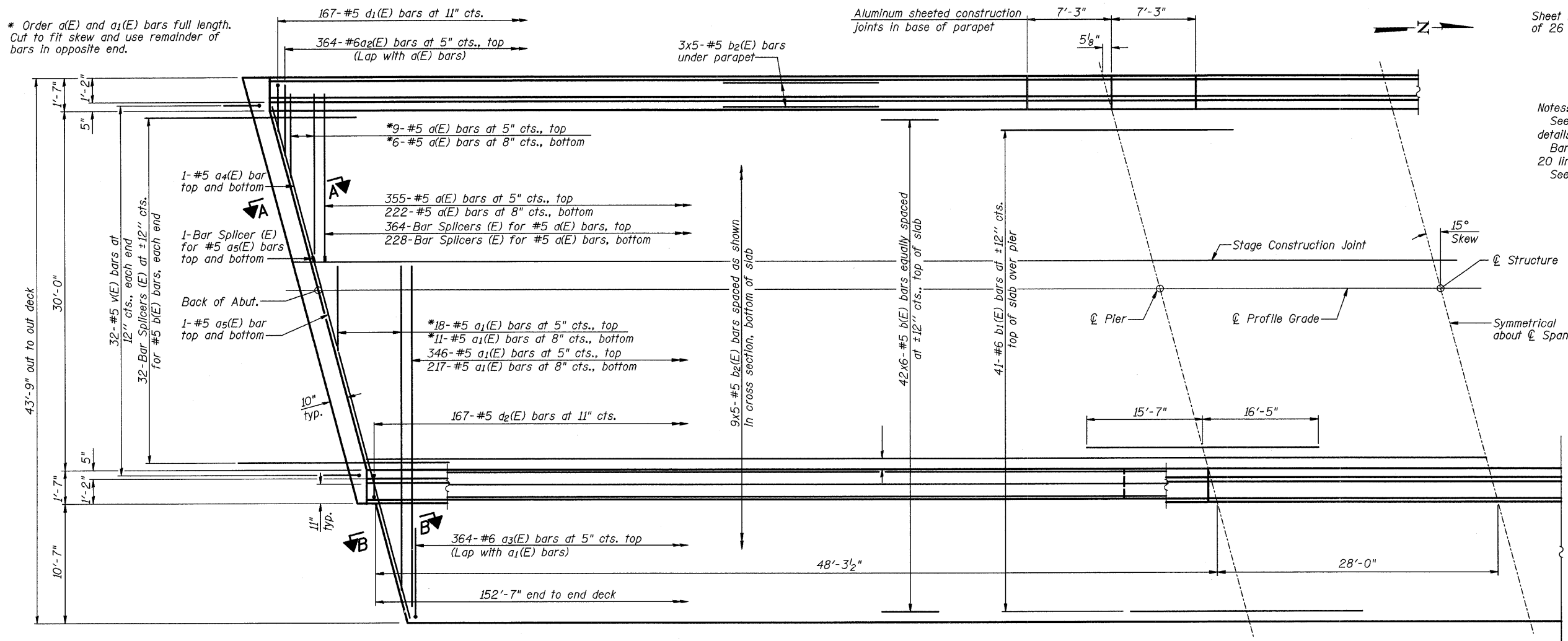


Sheet No. 12
of 26 Sheets

ROUTE NO.	SECTION	COUNTY	TOTAL SHEETS	SHEET NO.
FAU 7432	*	MACON	47	22
FEDERAL DIST. NO.		ILLINOIS	PROJECT	

• 08-00602-00-BR

Notes:
See Sheets 13 thru 15 of 26 for superstructure details and Bill of Material.
Bars indicated thus 20 x 3-#5 etc. indicates 20 lines of bars with 3 lengths per line.
See Sheet 13 of 26 for parapet reinforcement.



NEAR PIER

CROSS SECTION
(Looking Up Station)

NEAR MIDSPAN

MACARTHUR ROAD (FAU 7432) OVER STEVENS CREEK

DECK PLAN AND CROSS SECTION

REVISIONS	SECTION 08-00602-00-BR	MACARTHUR ROAD (FAU 7432)	DRAWN BY DATE
No. DATE INITIALS	STA 10+00.00	SN 058-6025	R KING 07/09
1		MACON COUNTY	CHECKED BY DATE
2			JMB 07/09
3			BOOK NUMBER
4			486
5			PROJECT No.
6			5307
7			SHEET No.
8			
9			
10			

HOMER L. CHASTAIN & ASSOCIATES, LLP
CONSULTING ENGINEERS
184-00137

DECATUR CHICAGO
(317) 423-8544 (773) 714-0050
ROCKFORD
(815) 489-0050