

ROUTE NO.	SECTION	COUNTY	TOTAL SHEETS	SHEET NO.
FAU 7432	#	MACON	47	35
FED. ROAD DIST. NO.	ILLINOIS	PROJECT		

08-00602-00-BR

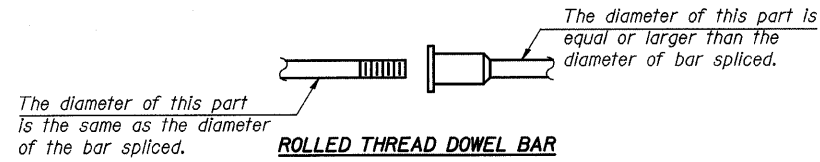
**NOTES**

Bar splicer assemblies shall be of an approved type and shall develop in tension at least 125 percent of the yield strength of the lapped reinforcement bars.  
 Splicer rods shall be of minimum 60 ksi yield strength, threaded or coiled full length.  
 All reinforcement bars shall be lapped and tied to the splicer rods or dowel bars.  
 Bar splicer assemblies shall be epoxy coated according to the requirements for reinforcement bars.  
 Other systems of similar design may be submitted to the Engineer for approval. Approval shall be based on certified test results from an approved testing laboratory that the proposed bar splicer assembly satisfies the following requirements:

- ① Minimum Capacity (Tension in kips) =  $1.25 \times f_y \times A_t$
- ② Minimum \*Pull-out Strength (Tension in kips) =  $0.66 \times f_y \times A_t$

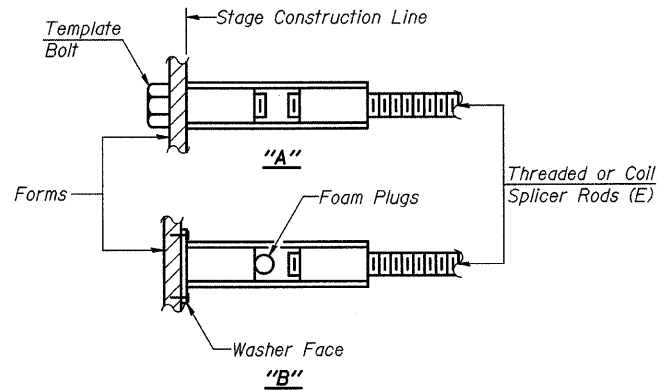
Where  $f_y$  = Yield strength of lapped reinforcement bars in ksi.  
 $A_t$  = Tensile stress area of lapped reinforcement bars.  
 \* = 28 day concrete

BAR SPLICER ASSEMBLIES			
Bar Size to be Spliced	Splicer Rod or Dowel Bar Length	Strength Requirements	
		Min. Capacity kips - tension	Min. Pull-Out Strength kips - tension
#4	1'-8"	14.7	7.9
#5	2'-0"	23.0	12.3
#6	2'-7"	33.1	17.4
#7	3'-5"	45.1	23.8
#8	4'-6"	58.9	31.3
#9	5'-9"	75.0	39.6
#10	7'-3"	95.0	50.3
#11	9'-0"	117.4	61.8



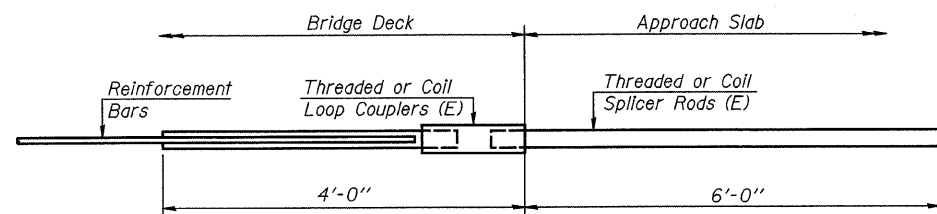
**BAR SPLICER ASSEMBLY ALTERNATIVES**

\*\*Heavy Hex Nuts conforming to ASTM A 563, Grade C, D or DH may be used.



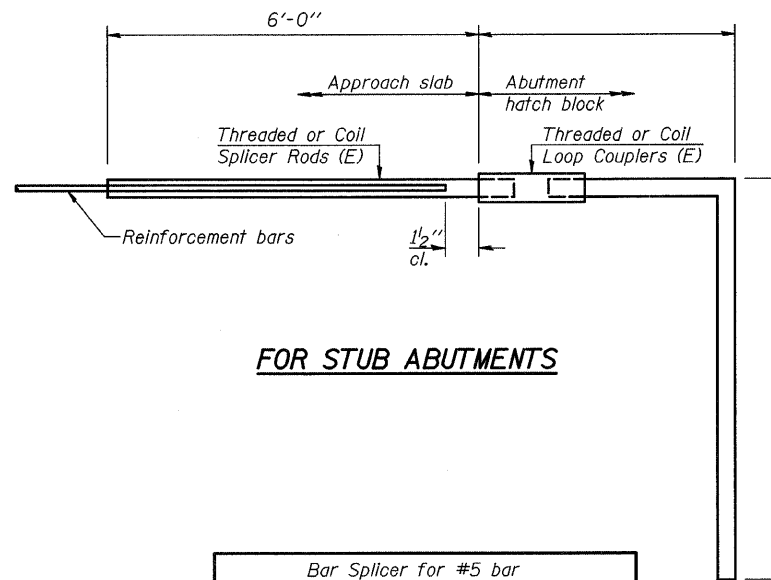
**INSTALLATION AND SETTING METHODS**

"A" :Set bar splicer assembly by means of a template bolt.  
 "B" :Set bar splicer assembly by nailing to wood forms or cementing to steel forms.  
 (E) : Indicates epoxy coating.



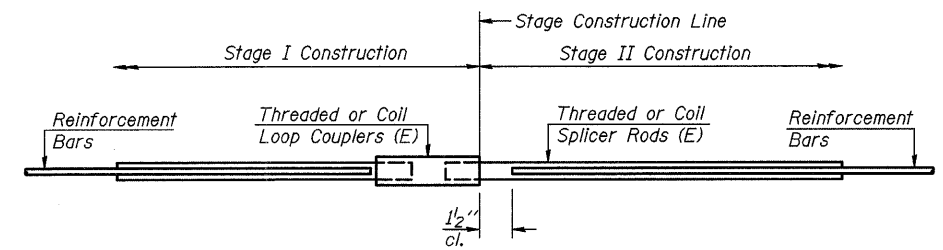
**FOR INTEGRAL OR SEMI-INTEGRAL ABUTMENTS**

Bar Splicer for #5 bar	
Min. Capacity = 23.0 kips - tension	
Min. Pull-out Strength = 12.3 kips - tension	
No. Required = 64	



**FOR STUB ABUTMENTS**

Bar Splicer for #5 bar	
Min. Capacity = 23.0 kips - tension	
Min. Pull-out Strength = 12.3 kips - tension	
No. Required =	



**STANDARD**

Bar Size	No. Assemblies Required	Location
#5	596	Deck
#6	16	Diaphragms
#7	16	Abutments
#5	36	Piers
#7	20	Piers
#4	50	Approach Slabs
#5	172	Approach Slabs

MACARTHUR ROAD (FAU 7432) OVER STEVENS CREEK

**BAR SPLICER ASSEMBLY DETAILS**

REVISIONS		SECTION 08-00602-00-BR	MACARTHUR ROAD (FAU 7432)	DRAWN BY DATE
No.	DATE	INITIALS	SN 058-6025	R KING 07/09
1			MACON COUNTY	CHECKED BY DATE
2				JMB 07/09
3				BOOK NUMBER
4				486
5				PROJECT No.
6				5307
7				SHEET No.
8				
9				
10				

HOMER L. CHASTAIN & ASSOCIATES, LLP  
 CONSULTING ENGINEERS  
 DECATUR CHICAGO (217) 422-8544 (773) 714-0050  
 ROCKFORD (815) 489-0050