

P:\001840\DWG\LATEST DWGS (BJG 11-06)\Sidewalk Plans\PLAN & PROFILES.dwg 5/22/2008 1:55:08 PM CDT

FAP ROUTE	IDOT SECTION	COUNTY
600	01-00026-00-SW	ST. CLAIR
FEDERAL AID PROJECT		ILLINOIS
IDOT JOB NO. CMF-0600(058)		
IDOT CONTRACT NO. 97318		

**THOUVENOT, WADE & MOERCHEN, INC.**  
ENGINEERS ♦ SURVEYORS ♦ PLANNERS



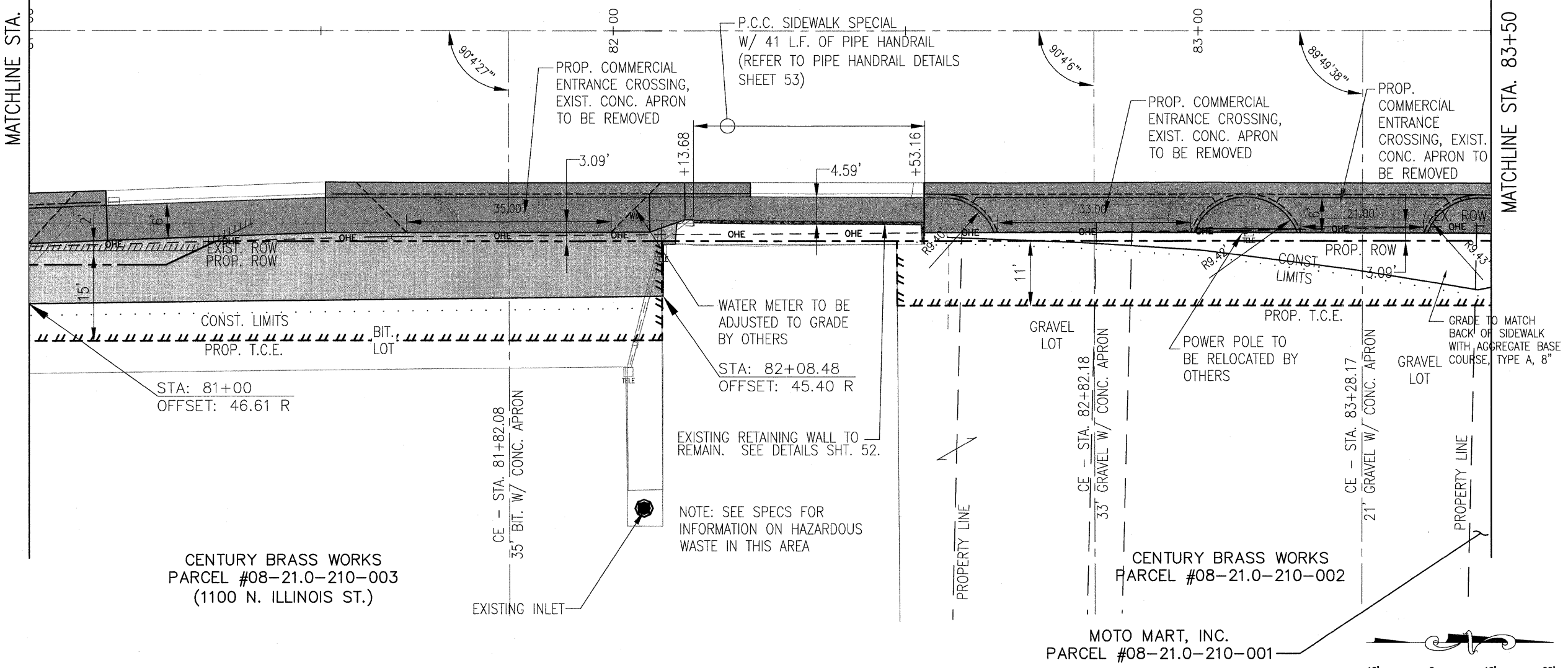
- CORPORATE OFFICE**  
4940 OLD COLLINSVILLE RD.  
SWANSEA, ILLINOIS 62226  
TEL (618) 624-4488  
FAX (618) 624-6888  
corp@twm-inc.com
- CARBONDALE OFFICE**  
206 WEST COLLEGE STREET  
CARBONDALE, ILLINOIS 62901  
TEL (618) 549-8844  
FAX (618) 549-8450  
carbondale@twm-inc.com
- EDWARDSVILLE OFFICE**  
1015B CENTURY DRIVE  
EDWARDSVILLE, ILLINOIS 62025  
TEL (618) 656-4040  
FAX (618) 656-4343  
edwardsville@twm-inc.com
- ST. LOUIS OFFICE**  
1001 CRAIG ROAD, SUITE 260  
ST. LOUIS, MISSOURI 63146  
TEL (314) 236-5052  
FAX (314) 872-2194  
stlouis@twm-inc.com
- WATERLOO OFFICE**  
113 SOUTH MAIN STREET  
WATERLOO, ILLINOIS 62298  
TEL (618) 939-5050  
FAX (618) 939-3938  
waterloo@twm-inc.com

PROFESSIONAL REGISTRATIONS	LICENSE NO.
ILLINOIS PROFESSIONAL DESIGN FIRM	184-001220
PROFESSIONAL ENGINEERING CORP.	62-035370
PROFESSIONAL STRUCTURAL ENGR. CORP.	81-005202
ILLINOIS PROF. LAND SURVEYING CORP.	048-000029
MISSOURI PROFESSIONAL ENGR. CORP.	NC 001528
MISSOURI LAND SURVEYING CORP.	NC 000346

MATCHLINE STA. 81+00

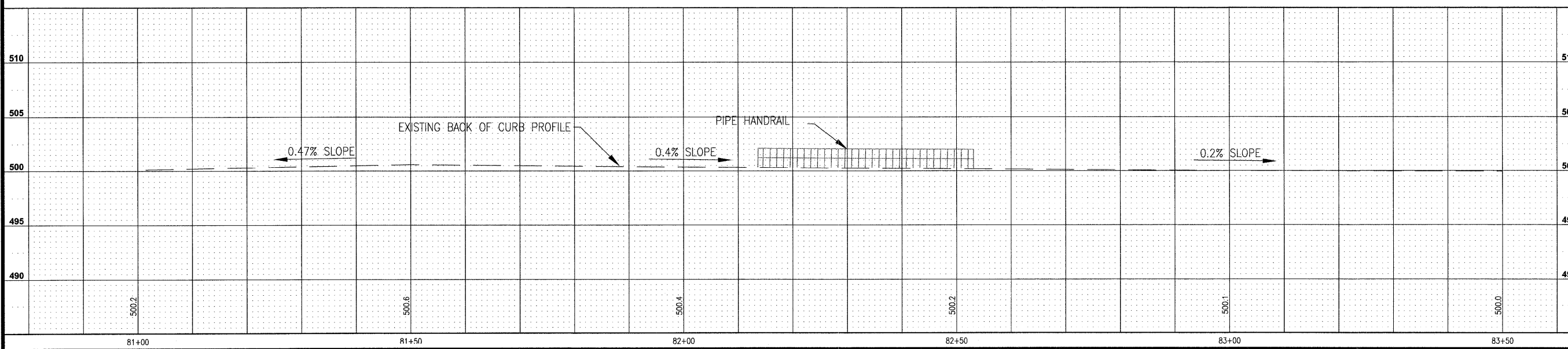
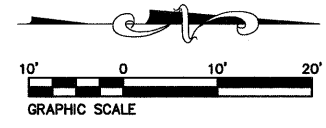
FAP ROUTE 600 (IL 159)

MATCHLINE STA. 83+50



CENTURY BRASS WORKS  
PARCEL #08-21.0-210-003  
(1100 N. ILLINOIS ST.)

MOTO MART, INC.  
PARCEL #08-21.0-210-001



**SIDEWALK PLAN AND PROFILE**  
**PEDESTRIAN SIDEWALKS  
ALONG ILLINOIS ROUTE 159  
VILLAGE OF SWANSEA  
ST. CLAIR COUNTY, ILLINOIS**

REV.	DATE	DESCRIPTION
△		
△		
△		

PLAN STATUS:  
**100%**  
**7/15/09**

ISSUED FOR REVIEW     ISSUED FOR BIDDING  
 ISSUED FOR CONSTR.     RECORD DRAWING

DRAWN BY: BJB    SHEET  
DESIGNED BY: BJB    **7**  
CHECKED BY: JWF    OF 83 SHEETS  
APPROVED BY: SJK    PROJECT DESCRIPTION  
PROJECT NUMBER: T16000184A    SWANSEA SIDEWALKS