

P:\000184a\DWG\LATEST\DWGS (BJG 11-06)\Sidewalk Plans\PLAN & PROFILES.dwg 5/22/2008 1:55:08 PM CDT

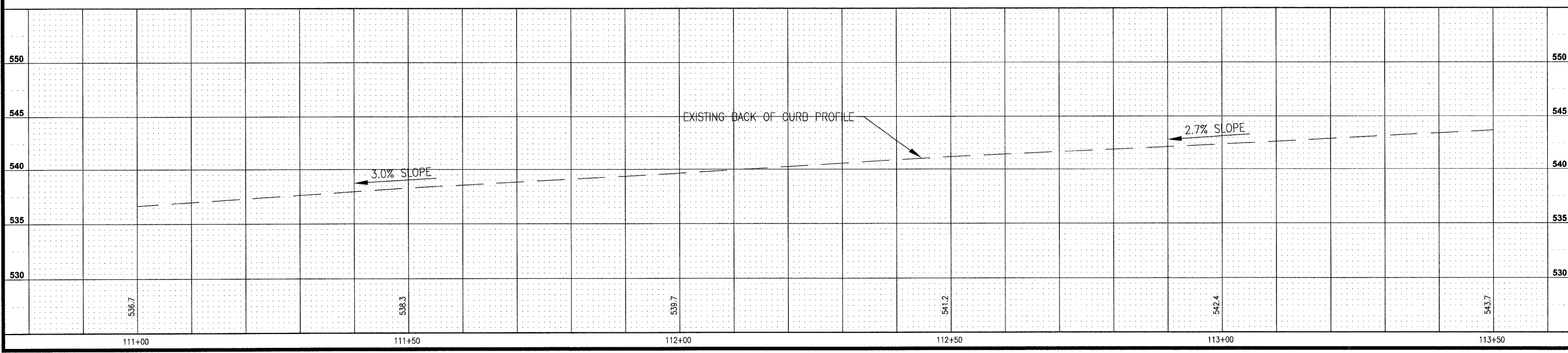
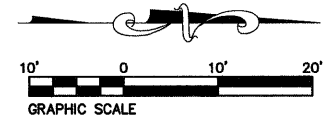
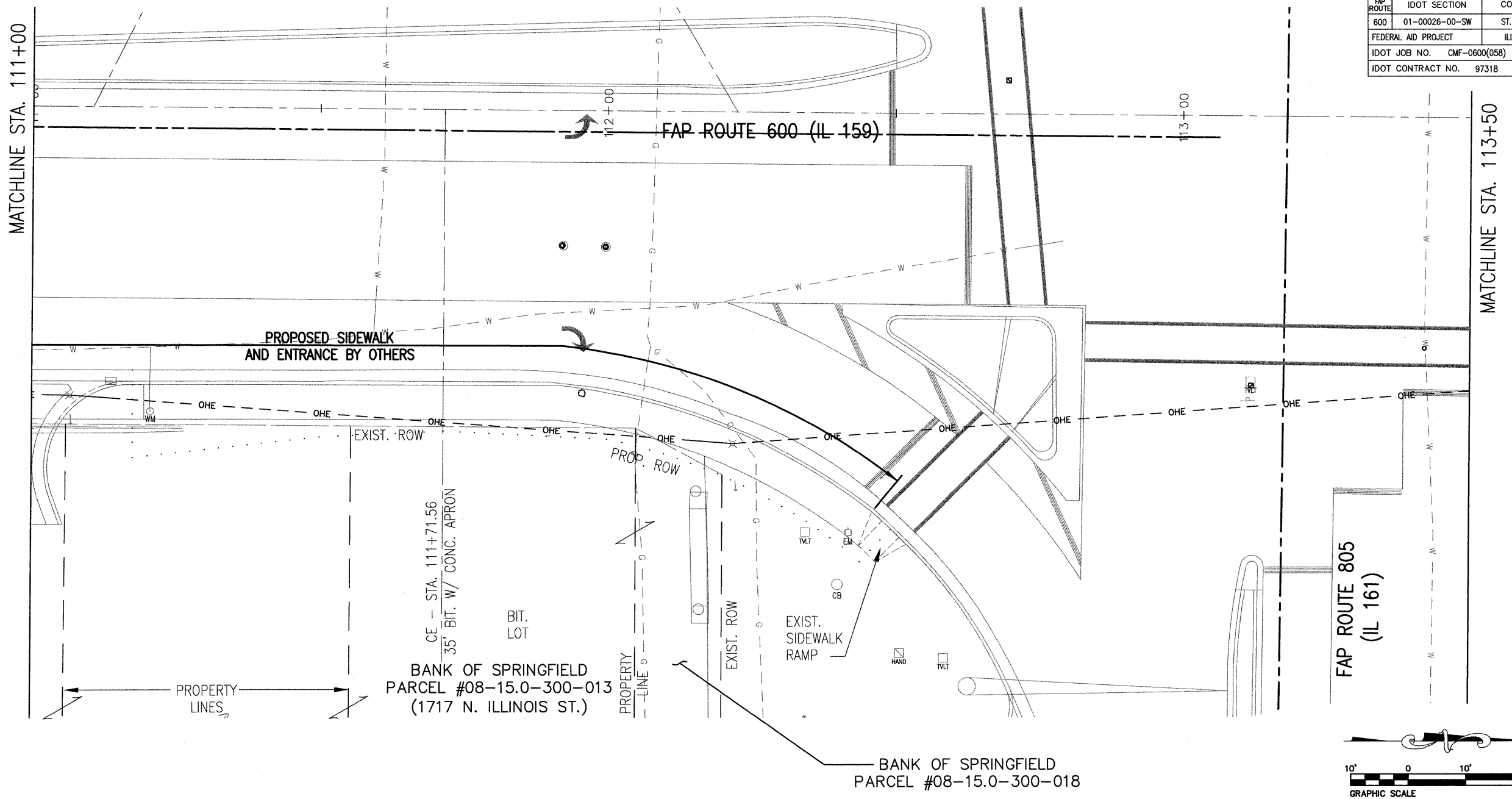
|                     |                |           |
|---------------------|----------------|-----------|
| FAP ROUTE           | IDOT SECTION   | COUNTY    |
| 600                 | 01-00026-00-SW | ST. CLAIR |
| FEDERAL AID PROJECT |                | ILLINOIS  |
| IDOT JOB NO.        | CMF-0600(058)  |           |
| IDOT CONTRACT NO.   | 97318          |           |

**THOUVENOT, WADE & MOERCHEN, INC.**  
ENGINEERS ♦ SURVEYORS ♦ PLANNERS



- CORPORATE OFFICE**  
4940 OLD COLLINSVILLE RD.  
SWANSEA, ILLINOIS 62226  
TEL (618) 624-4488  
FAX (618) 624-6688  
corp@twm-inc.com
- CARBONDALE OFFICE**  
206 WEST COLLEGE STREET  
CARBONDALE, ILLINOIS 62901  
TEL (618) 549-8844  
FAX (618) 549-8450  
carbondale@twm-inc.com
- EDWARDSVILLE OFFICE**  
1015B CENTURY DRIVE  
EDWARDSVILLE, ILLINOIS 62025  
TEL (618) 656-4040  
FAX (618) 656-4343  
edwardsville@twm-inc.com
- ST. LOUIS OFFICE**  
1001 CRAIG ROAD, SUITE 260  
ST. LOUIS, MISSOURI 63146  
TEL (314) 236-5052  
FAX (314) 872-2194  
stlouis@twm-inc.com
- WATERLOO OFFICE**  
113 SOUTH MAIN STREET  
WATERLOO, ILLINOIS 62298  
TEL (618) 939-5050  
FAX (618) 939-3938  
waterloo@twm-inc.com

| PROFESSIONAL REGISTRATIONS          | LICENSE NO. |
|-------------------------------------|-------------|
| ILLINOIS PROFESSIONAL DESIGN FIRM   | 184-001220  |
| PROFESSIONAL ENGINEERING CORP.      | 62-035370   |
| PROFESSIONAL STRUCTURAL ENGR. CORP. | 81-005202   |
| ILLINOIS PROF. LAND SURVEYING CORP. | 048-000029  |
| MISSOURI PROFESSIONAL ENGR. CORP.   | NC 001528   |
| MISSOURI LAND SURVEYING CORP.       | NC 000346   |



**SIDEWALK PLAN AND PROFILE**

**PEDESTRIAN SIDEWALKS  
ALONG ILLINOIS ROUTE 159  
VILLAGE OF SWANSEA  
ST. CLAIR COUNTY, ILLINOIS**

| REV. | DATE | DESCRIPTION |
|------|------|-------------|
| △    |      |             |
| △    |      |             |
| △    |      |             |

PLAN STATUS:

**100%**  
7/15/09

ISSUED FOR REVIEW     ISSUED FOR BIDDING  
 ISSUED FOR CONSTR.     RECORD DRAWING

DRAWN BY: BJB    SHEET  
DESIGNED BY: BJB    **19**  
CHECKED BY: JWF    OF 83 SHEETS  
APPROVED BY: SJK    PROJECT DESCRIPTION  
PROJECT NUMBER: T16000184A    SWANSEA SIDEWALKS