

FAP ROUTE	IDOT SECTION	COUNTY
600	01-00026-00-SW	ST. CLAIR
FEDERAL AID PROJECT		ILLINOIS
IDOT JOB NO.	CMF-0600(058)	
IDOT CONTRACT NO.	97318	

**THOUVENOT, WADE & MOERCHEN, INC.**  
ENGINEERS • SURVEYORS • PLANNERS

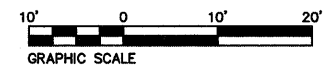
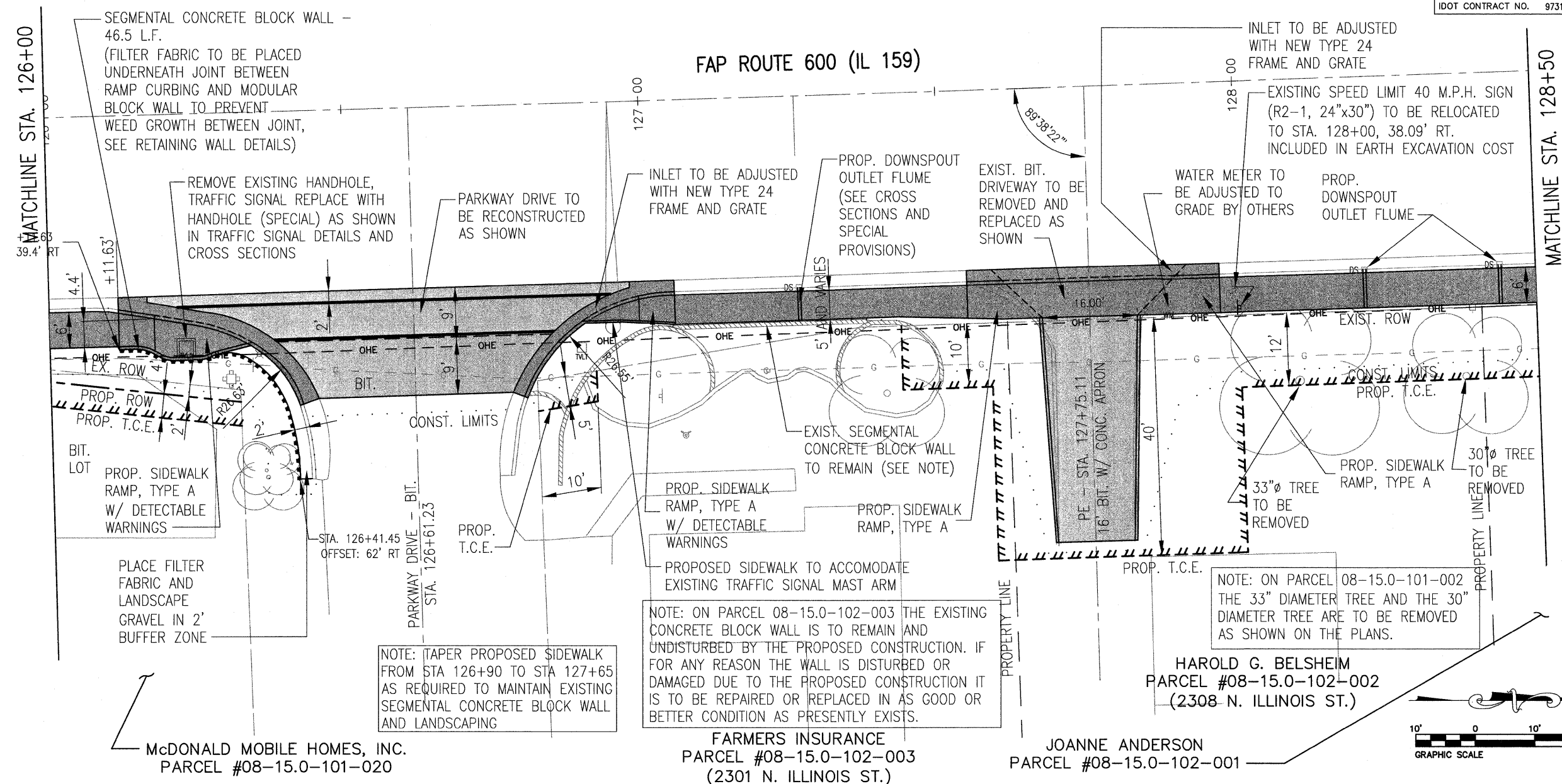


- CORPORATE OFFICE**  
4940 OLD COLLINSVILLE RD.  
SWANSEA, ILLINOIS 62226  
TEL (618) 624-4488  
FAX (618) 624-6688  
corp@twm-inc.com
- CARBONDALE OFFICE**  
206 WEST COLLEGE STREET  
CARBONDALE, ILLINOIS 62901  
TEL (618) 549-8844  
FAX (618) 549-8450  
carbondale@twm-inc.com
- EDWARDSVILLE OFFICE**  
1015B CENTURY DRIVE  
EDWARDSVILLE, ILLINOIS 62025  
TEL (618) 656-4040  
FAX (618) 656-4343  
edwardsville@twm-inc.com
- ST. LOUIS OFFICE**  
1001 CRAIG ROAD, SUITE 260  
ST. LOUIS, MISSOURI 63146  
TEL (314) 236-5052  
FAX (314) 872-2194  
stlouis@twm-inc.com
- WATERLOO OFFICE**  
113 SOUTH MAIN STREET  
WATERLOO, ILLINOIS 62298  
TEL (618) 939-5050  
FAX (618) 939-3938  
waterloo@twm-inc.com

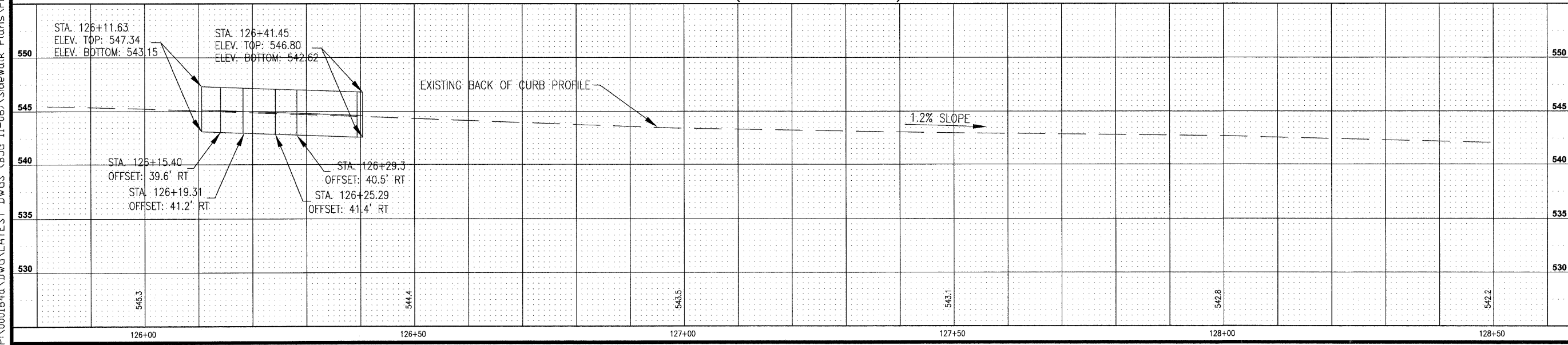
PROFESSIONAL REGISTRATIONS	LICENSE NO.
ILLINOIS PROFESSIONAL DESIGN FIRM	154-001220
PROFESSIONAL ENGINEERING CORP.	62-035370
PROFESSIONAL STRUCTURAL ENGR. CORP.	81-005202
ILLINOIS PROF. LAND SURVEYING CORP.	048-000029
MISSOURI PROFESSIONAL ENGR. CORP.	NC 001528
MISSOURI LAND SURVEYING CORP.	NC 000346

**SIDEWALK PLAN AND PROFILE**

**PEDESTRIAN SIDEWALKS  
ALONG ILLINOIS ROUTE 159  
VILLAGE OF SWANSEA  
ST. CLAIR COUNTY, ILLINOIS**



P:\000184a\DWG\LATEST DWGS (BJG 11-06)\Sidewalk Plans\PLAN & PROFILES.dwg 5/22/2008 1:55:08 PM CDT



REV.	DATE	DESCRIPTION

**PLAN STATUS**

**100%  
7/15/09**

ISSUED FOR REVIEW     ISSUED FOR BIDDING  
 ISSUED FOR CONSTR.     RECORD DRAWING

DRAWN BY: BJB  
DESIGNED BY: BJB  
CHECKED BY: JWF  
APPROVED BY: SJK

SHEET  
**25**  
OF 83 SHEETS

PROJECT DESCRIPTION  
SWANSEA SIDEWALKS

PROJECT NUMBER T16000184A