

| | | |
|---------------------|----------------|-----------|
| FAP ROUTE | IDOT SECTION | COUNTY |
| 600 | 01-00026-00-SW | ST. CLAIR |
| FEDERAL AID PROJECT | ILLINOIS | |
| IDOT JOB NO. | CMF-0600(058) | |
| IDOT CONTRACT NO. | 97318 | |

THOUVENOT, WADE & MOERCHEN, INC.
ENGINEERS ♦ SURVEYORS ♦ PLANNERS



- CORPORATE OFFICE**
4940 OLD COLLINSVILLE RD.
SWANSEA, ILLINOIS 62226
TEL (618) 624-4488
FAX (618) 624-6688
corp@twm-inc.com
- CARBONDALE OFFICE**
206 WEST COLLEGE STREET
CARBONDALE, ILLINOIS 62901
TEL (618) 549-8844
FAX (618) 549-8450
carbondale@twm-inc.com
- EDWARDSVILLE OFFICE**
1015B CENTURY DRIVE
EDWARDSVILLE, ILLINOIS 62025
TEL (618) 656-4040
FAX (618) 656-4343
edwardsville@twm-inc.com
- ST. LOUIS OFFICE**
1001 CRAIG ROAD, SUITE 260
ST. LOUIS, MISSOURI 63146
TEL (314) 236-5052
FAX (314) 872-2194
stlouis@twm-inc.com
- WATERLOO OFFICE**
113 SOUTH MAIN STREET
WATERLOO, ILLINOIS 62298
TEL (618) 939-5059
FAX (618) 939-3938
waterloo@twm-inc.com

| | |
|-------------------------------------|-------------|
| PROFESSIONAL REGISTRATIONS | LICENSE NO. |
| ILLINOIS PROFESSIONAL DESIGN FIRM | 184-001220 |
| PROFESSIONAL ENGINEERING CORP. | 62-035370 |
| PROFESSIONAL STRUCTURAL ENGR. CORP. | 61-005202 |
| ILLINOIS PROF. LAND SURVEYING CORP. | 048-000029 |
| MISSOURI PROFESSIONAL ENGR. CORP. | NC 001528 |
| MISSOURI LAND SURVEYING CORP. | NC 000346 |

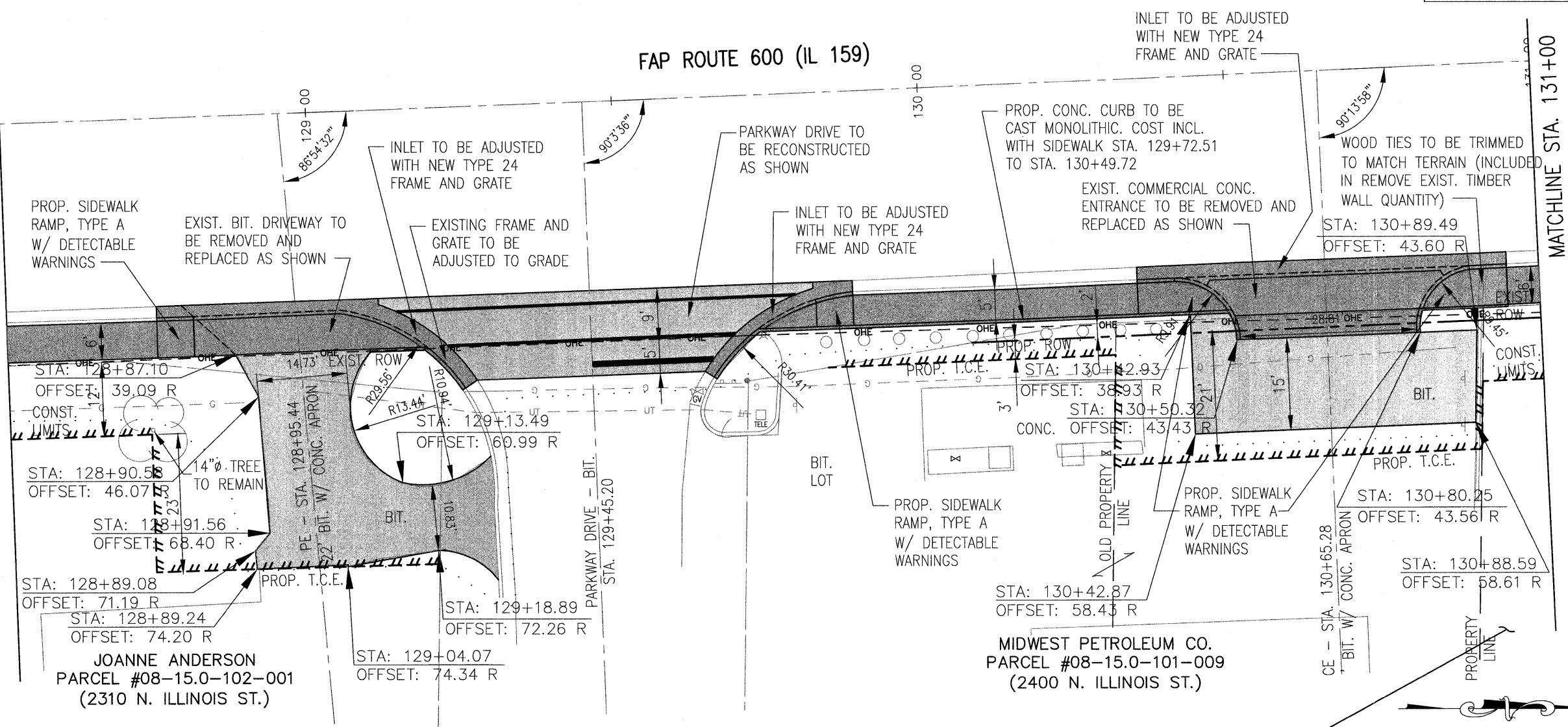
SIDEWALK PLAN AND PROFILE

**PEDESTRIAN SIDEWALKS
ALONG ILLINOIS ROUTE 159
VILLAGE OF SWANSEA
ST. CLAIR COUNTY, ILLINOIS**

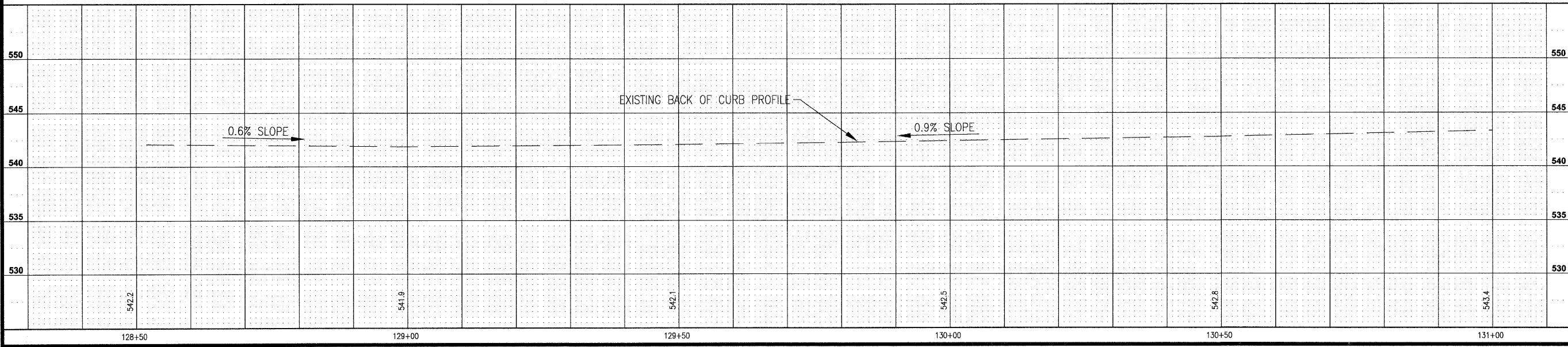
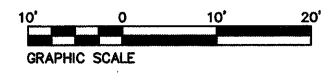
MATCHLINE STA. 128+50

MATCHLINE STA. 131+00

FAP ROUTE 600 (IL 159)



CAROL A. BARTLE
PARCEL #08-15.0-101-066



P:\00184a\DWG\LATEST DWGS (BJG 11-06)\Sidewalk Plans\PLAN & PROFILE.dwg 5/22/2008 1:55:08 PM CDT

| REV. | DATE | DESCRIPTION |
|------|------|-------------|
| | | |
| | | |
| | | |

PLAN STATUS:

100%
7/15/09

ISSUED FOR REVIEW ISSUED FOR BIDDING
 ISSUED FOR CONSTR. RECORD DRAWING

DRAWN BY: BJC
DESIGNED BY: BJC
CHECKED BY: JWF
APPROVED BY: SJK

SHEET
26
OF 83 SHEETS

PROJECT DESCRIPTION:
SWANSEA SIDEWALKS

PROJECT NUMBER: T16000184A