

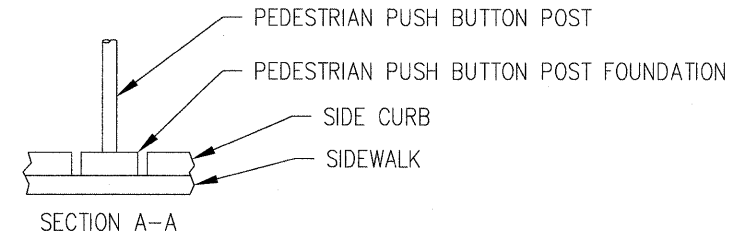
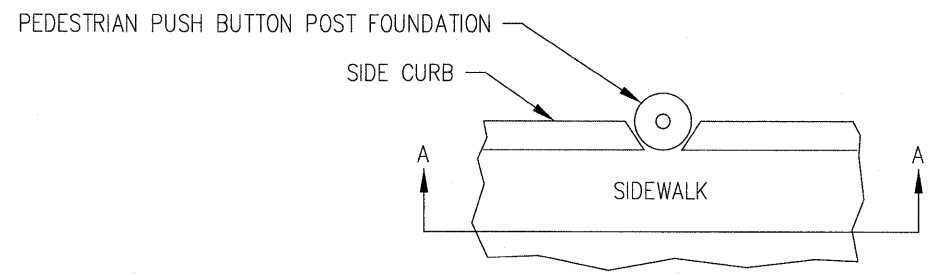
FAP ROUTE	IDOT SECTION	COUNTY
600	01-00026-00-SW	ST. CLAIR
FEDERAL AID PROJECT	ILLINOIS	
IDOT JOB NO.	CMF-0600(058)	
IDOT CONTRACT NO.	97318	

THOUVENOT, WADE & MOERCHEN, INC.
ENGINEERS • SURVEYORS • PLANNERS



- CORPORATE OFFICE**
4940 OLD COLLINSVILLE RD.
SWANSEA, ILLINOIS 62226
TEL (618) 624-4488
FAX (618) 624-6688
corp@twm-inc.com
- CARBONDALE OFFICE**
206 WEST COLLEGE STREET
CARBONDALE, ILLINOIS 62901
TEL (618) 549-8844
FAX (618) 549-8450
carbondale@twm-inc.com
- EDWARDSVILLE OFFICE**
1015B CENTURY DRIVE
EDWARDSVILLE, ILLINOIS 62025
TEL (618) 656-4040
FAX (618) 656-4343
edwardsville@twm-inc.com
- ST. LOUIS OFFICE**
1001 CRAIG ROAD, SUITE 260
ST. LOUIS, MISSOURI 63146
TEL (314) 236-5052
FAX (314) 872-2194
stlouis@twm-inc.com
- WATERLOO OFFICE**
113 SOUTH MAIN STREET
WATERLOO, ILLINOIS 62298
TEL (618) 939-5050
FAX (618) 939-3938
waterloo@twm-inc.com

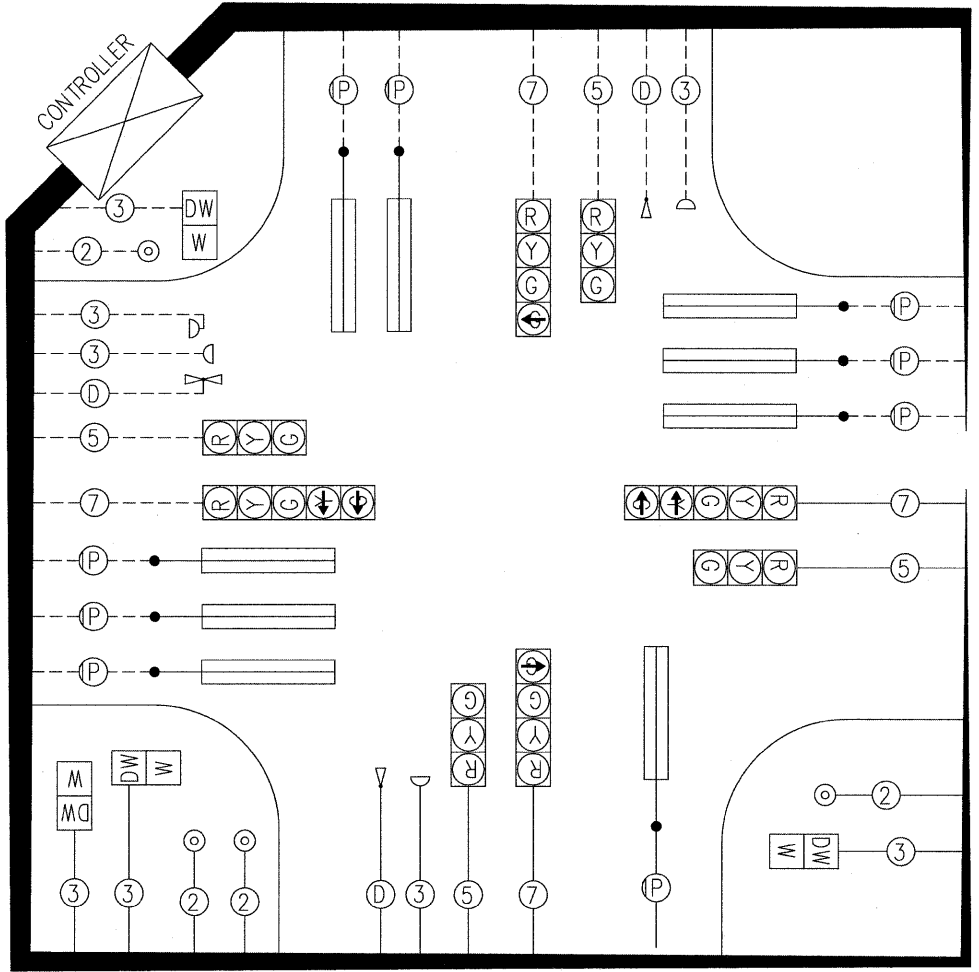
PROFESSIONAL REGISTRATIONS	LICENSE NO.
ILLINOIS PROFESSIONAL DESIGN FIRM	194-001220
PROFESSIONAL ENGINEERING CORP.	62-035370
PROFESSIONAL STRUCTURAL ENGR. CORP.	81-052602
ILLINOIS PROF. LAND SURVEYING CORP.	048-000029
MISSOURI PROFESSIONAL ENGR. CORP.	NC 001528
MISSOURI LAND SURVEYING CORP.	NC 000346



PEDESTRIAN PUSH BUTTON POST FOUNDATION INSTALLATION

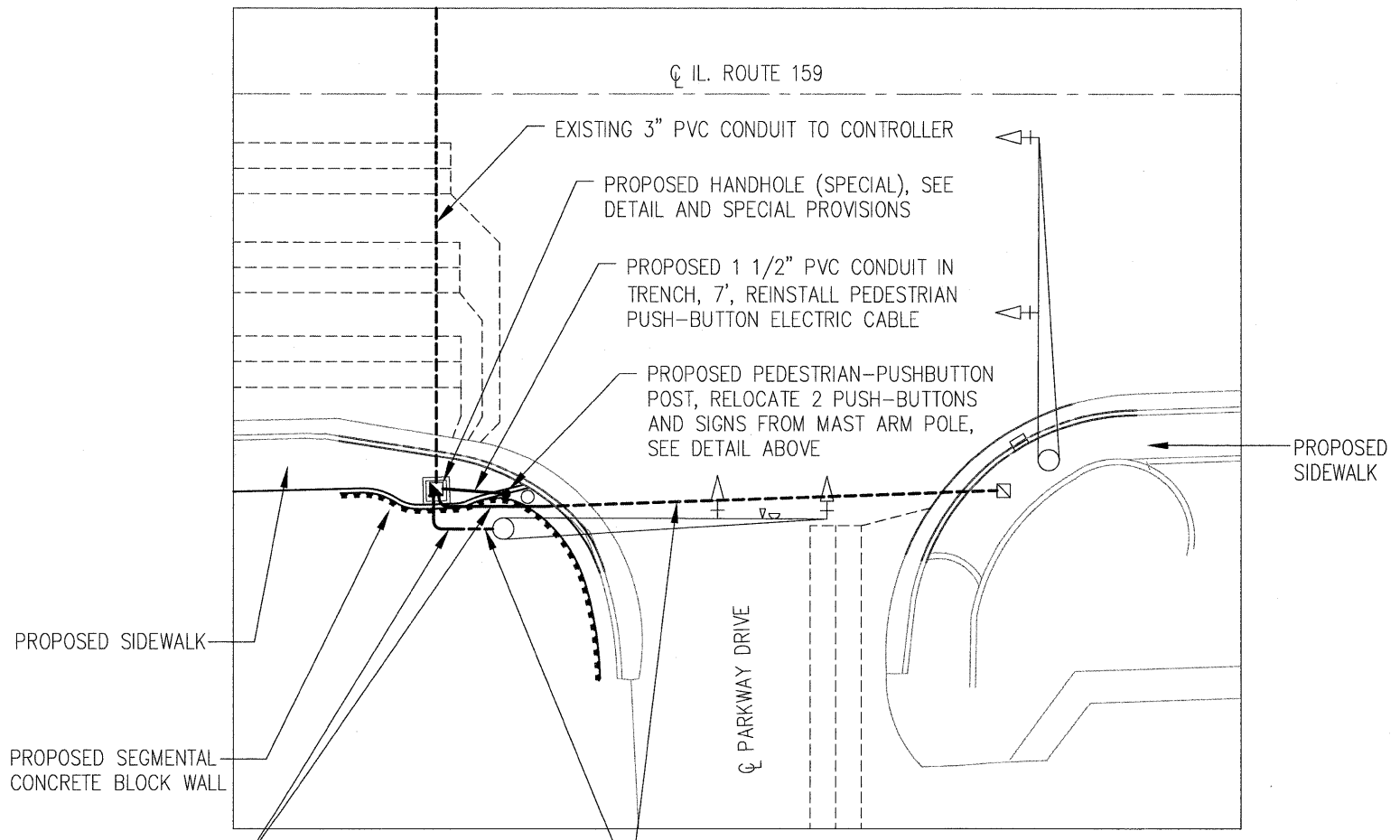
NOTE: THE HOLES IN THE MAST ARM POLE SHALL BE SECURELY CLOSED WITH TAMPER RESISTANT COVERS AFTER THE PEDESTRIAN PUSHBUTTONS ARE RELOCATED.

- LEGEND**
- EXISTING MAST ARM MOUNTED SIGNAL HEAD WITH BACKPLATE
 - EXISTING EMERGENCY VEHICLE PRIORITY SYSTEM DETECTOR
 - EXISTING EMERGENCY VEHICLE PRIORITY SYSTEM CONFIRMATION BEACON
 - EXISTING HANDHOLE
 - PROPOSED HANDHOLE
 - EXISTING MAST ARM ASSEMBLY AND POLE
 - EXISTING DETECTOR LOOP



----- EXISTING CABLES TO REMAIN
 _____ EXISTING CABLES TO BE REMOVED AND REINSTALLED

EXISTING TRAFFIC SIGNAL CABLE DIAGRAM

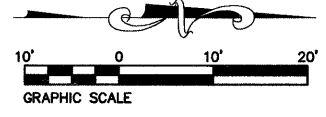


PROPOSED 2" PVC CONDUIT TO BE CONNECTED TO EXISTING CONDUITS, REMOVE AND REINSTALL ELECTRIC CABLE FROM CONDUIT

PORTIONS OF EXISTING CONDUIT TO REMAIN, REMOVE AND REINSTALL ELECTRIC CABLE FROM CONDUIT

TRAFFIC SIGNAL HANDHOLE REPLACEMENT LAYOUT

1. EXISTING MAST ARM SHAFT PEDESTRIAN PUSH-BUTTON CABLE HOLES SHALL BE SECURELY CLOSED WITH TAMPER RESISTANT COVERS.



P:\000184a\DWG\LATEST DWGS\BJG 11-06\Sidewalk Plans\TRAFFIC SIGNAL DETAILS.dwg 5/22/2008 14:11:19 PM CDT

TRAFFIC SIGNAL MODIFICATION DETAILS

PEDESTRIAN SIDEWALKS ALONG ILLINOIS ROUTE 159 VILLAGE OF SWANSEA ST. CLAIR COUNTY, ILLINOIS

REV	DATE	DESCRIPTION
△		
△		
△		

PLAN STATUS: **100%**
7/15/09

<input type="checkbox"/> ISSUED FOR REVIEW	<input type="checkbox"/> ISSUED FOR BIDDING
<input checked="" type="checkbox"/> ISSUED FOR CONSTR.	<input type="checkbox"/> RECORD DRAWING

DRAWN BY: BJB	SHEET
DESIGNED BY: BJB	47
CHECKED BY: JWF	OF 83 SHEETS
APPROVED BY: SJK	PROJECT DESCRIPTION
PROJECT NUMBER T16000184A	SWANSEA SIDEWALKS