

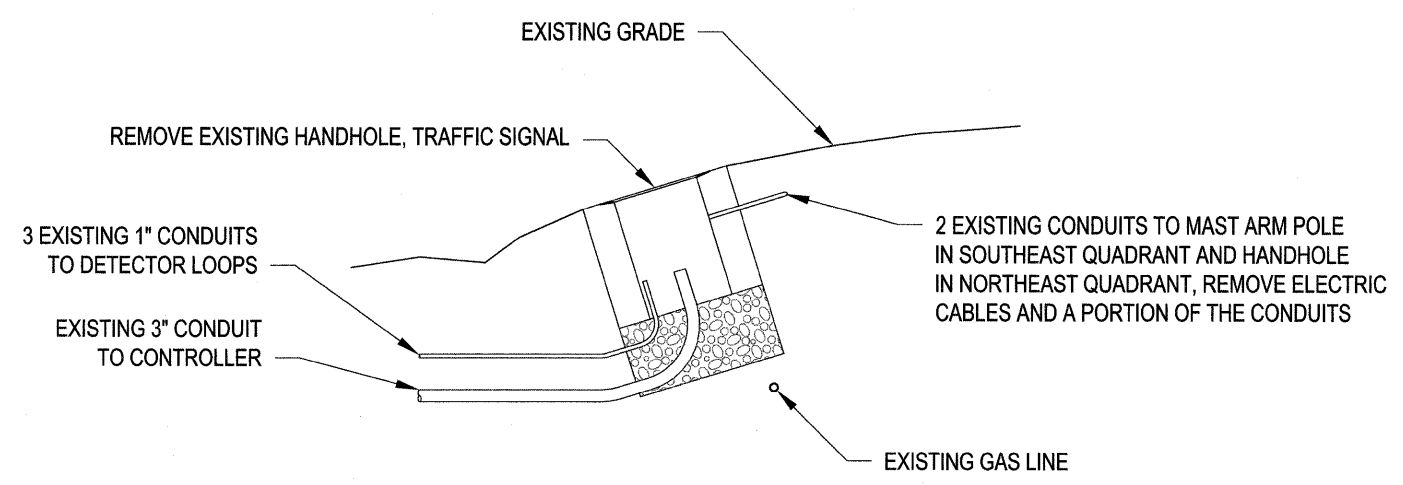
FED ROUTE	IDOT SECTION	COUNTY
600	01-00026-00-SW	ST. CLAIR
FEDERAL AID PROJECT		
ILLINOIS		
IDOT JOB NO.	CMF-0600(058)	
IDOT CONTRACT NO.	97318	

THOUVENOT, WADE & MOERCHEN, INC.
ENGINEERS ♦ SURVEYORS ♦ PLANNERS

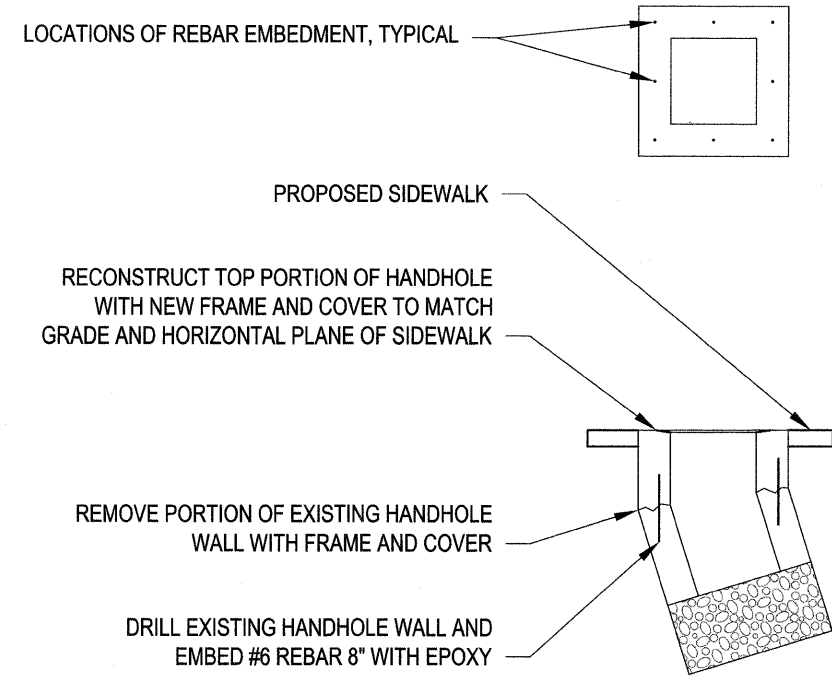


- CORPORATE OFFICE**
4940 OLD COLLINSVILLE RD.
SWANSEA, ILLINOIS 62226
TEL (618) 624-4488
FAX (618) 624-6688
corp@twm-inc.com
- CARBONDALE OFFICE**
206 WEST COLLEGE STREET
CARBONDALE, ILLINOIS 62901
TEL (618) 549-8844
FAX (618) 549-8450
carbondaletwm-inc.com
- EDWARDSVILLE OFFICE**
1015B CENTURY DRIVE
EDWARDSVILLE, ILLINOIS 62025
TEL (618) 656-4040
FAX (618) 656-4343
edwardsville@twm-inc.com
- ST. LOUIS OFFICE**
1001 CRAIG ROAD, SUITE 260
ST. LOUIS, MISSOURI 63146
TEL (314) 236-5052
FAX (314) 872-2194
stlouis@twm-inc.com
- WATERLOO OFFICE**
113 SOUTH MAIN STREET
WATERLOO, ILLINOIS 62298
TEL (618) 939-5050
FAX (618) 939-3938
waterloo@twm-inc.com

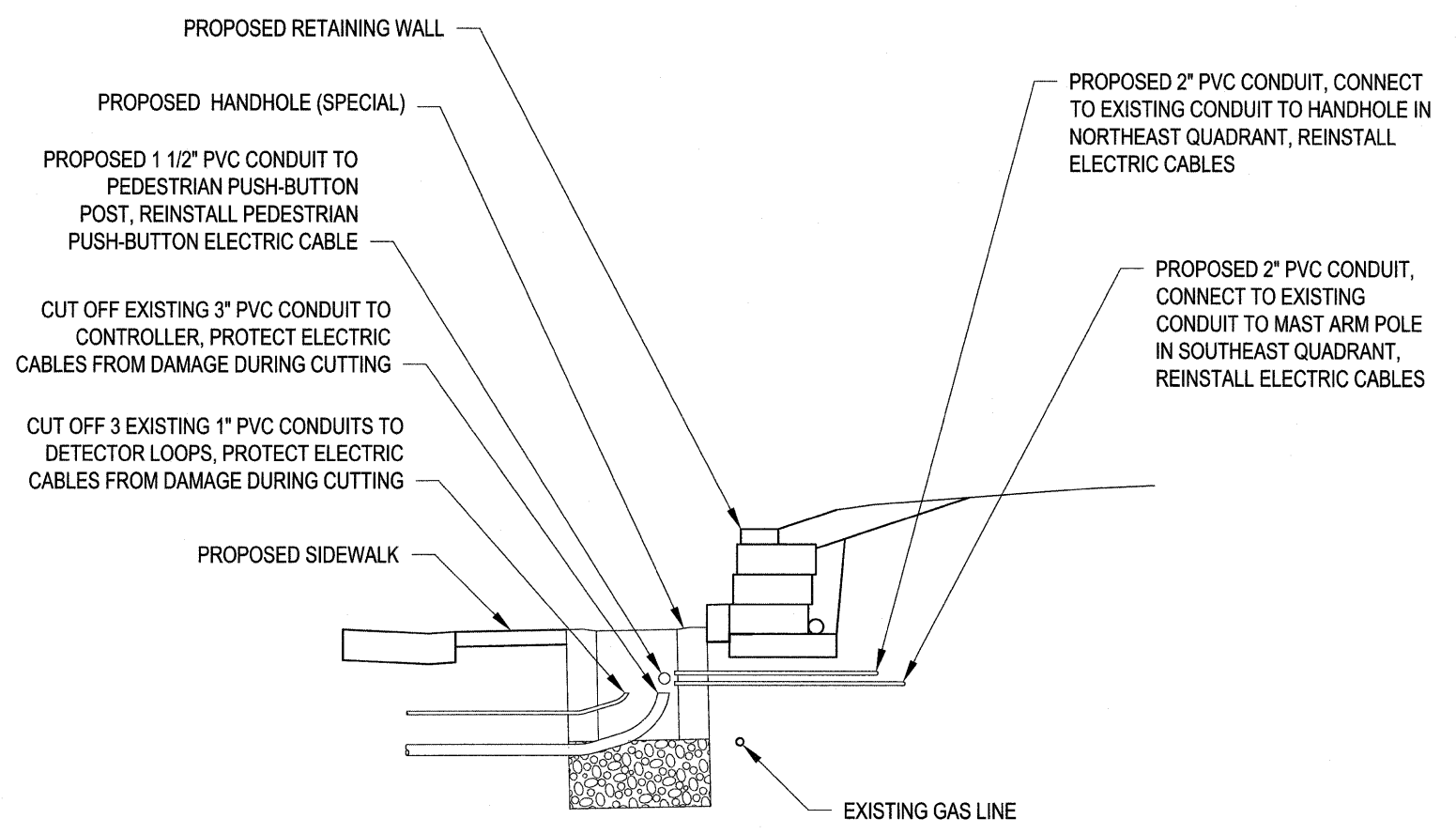
PROFESSIONAL REGISTRATIONS	LICENSE NO.
ILLINOIS PROFESSIONAL DESIGN FIRM	184-001220
PROFESSIONAL ENGINEERING CORP.	62-035370
PROFESSIONAL STRUCTURAL ENGR. CORP.	81-065202
ILLINOIS PROF. LAND SURVEYING CORP.	048-000029
MISSOURI PROFESSIONAL ENGR. CORP.	NC 001528
MISSOURI LAND SURVEYING CORP.	NC 000346



REMOVE EXISTING HANDHOLE, TRAFFIC SIGNAL DETAILS
STATION 126+22.89



DETAILS FOR HANDHOLES TO BE ADJUSTED



HANDHOLE (SPECIAL) DETAILS
STATION 126+22.89

SCHEDULE OF HANDHOLES TO BE ADJUSTED			
LOCATION (STATION, DIRECTION)			
ILLINOIS ROUTE 159			
94+47.35	RT	105+50.38	RT
95+69.10	RT	109+70.64	RT
96+78.01	RT	123+63.46	RT
97+71.16	RT	135+87.64	RT
102+31.85	RT		

TRAFFIC SIGNAL MODIFICATION DETAILS

PEDESTRIAN SIDEWALKS ALONG ILLINOIS ROUTE 159 VILLAGE OF SWANSEA ST. CLAIR COUNTY, ILLINOIS

REV.	DATE	DESCRIPTION
△		
△		
△		

PLAN STATUS:

100%
7/15/09

ISSUED FOR REVIEW ISSUED FOR BIDDING
 ISSUED FOR CONSTR. RECORD DRAWING

DRAWN BY: BJB SHEET
DESIGNED BY: BJB **48**
CHECKED BY: JWF OF 83 SHEETS
APPROVED BY: SJK PROJECT DESCRIPTION
PROJECT NUMBER T16000184A SWANSEA SIDEWALKS

P:\000184a\DWG\LATEST DWGS (BJG 11-06)\Sidewalk Plans\TRAFFIC SIGNAL DETAILS.dwg 5/22/2008 14:119 PM CDT