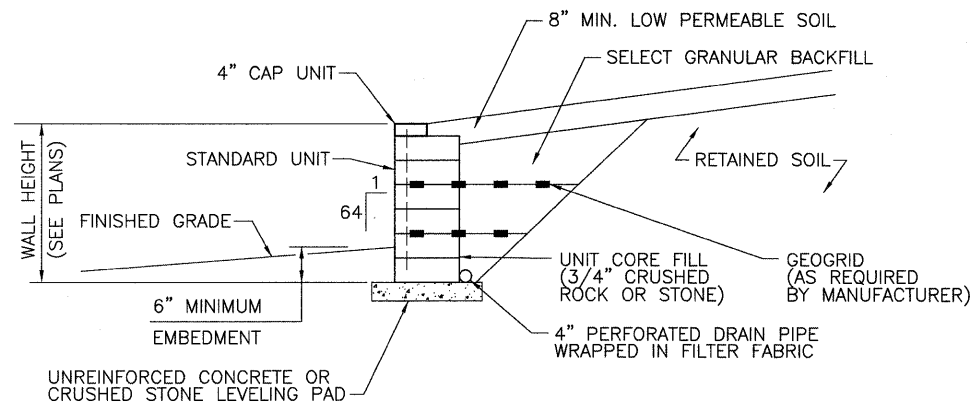


P:\000184c\DWG\LATEST DWGS (B.JG 11-06)\DWG\COVER, NOTES, SCHEDULES, TYPICALS, & DETAILS.dwg 7/26/2007 6:55:20 AM CDT



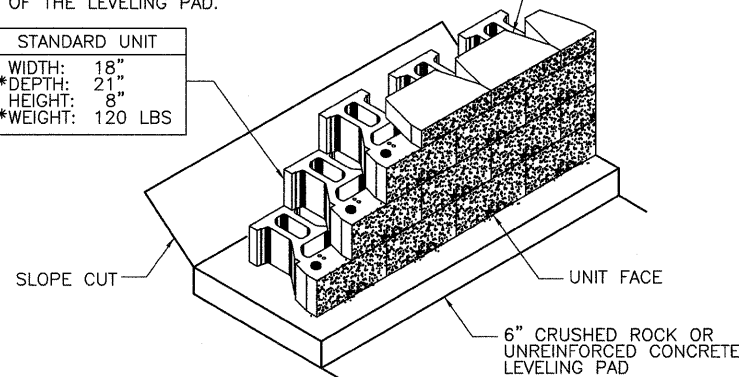
TYPICAL GRAVITY WALL SECTION
STANDARD UNIT - NEAR VERTICAL SETBACK

BASE LEVELING PAD NOTES:

1. THE LEVELING PAD IS TO BE CONSTRUCTED OF CRUSHED STONE OR 2,000 PSI± UNREINFORCED CONCRETE.
2. THE BASE FOUNDATION IS TO BE APPROVED BY THE ENGINEER PRIOR TO PLACEMENT OF THE LEVELING PAD.

STANDARD UNIT	
WIDTH:	18"
*DEPTH:	21"
HEIGHT:	8"
*WEIGHT:	120 LBS

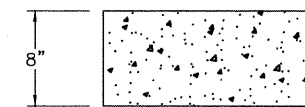
MINI CAP UNIT	
WIDTH:	18"
*DEPTH:	10"
HEIGHT:	4"
*WEIGHT:	50 LBS



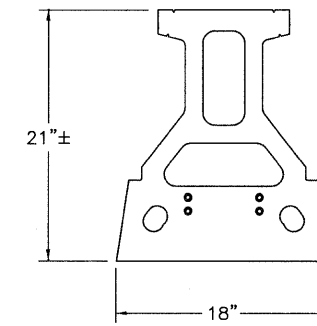
STANDARD UNIT/BASE PAD ISOMETRIC VIEW
N.T.S.

*DIMENSIONS & WEIGHT MAY VARY BY REGION

FAP ROUTE	IDOT SECTION	COUNTY
600	01-00026-00-SW	ST. CLAIR
FEDERAL AID PROJECT		ILLINOIS
IDOT JOB NO.	CMF-0600(058)	
IDOT CONTRACT NO.	97318	

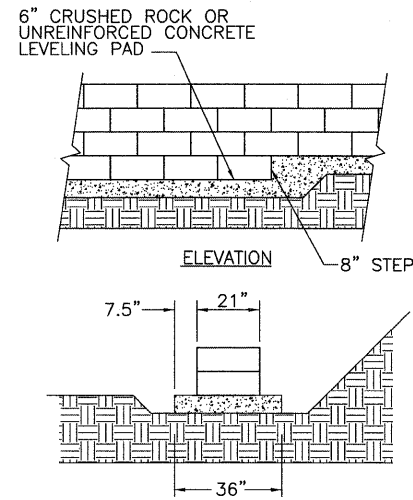


STANDARD ELEVATION

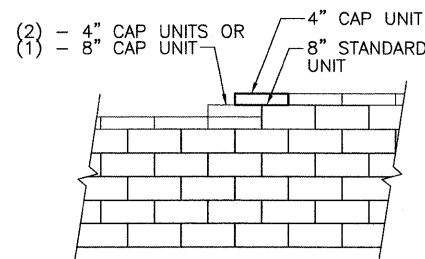


STANDARD PLAN

STANDARD STRAIGHT-FACE UNIT
N.T.S.



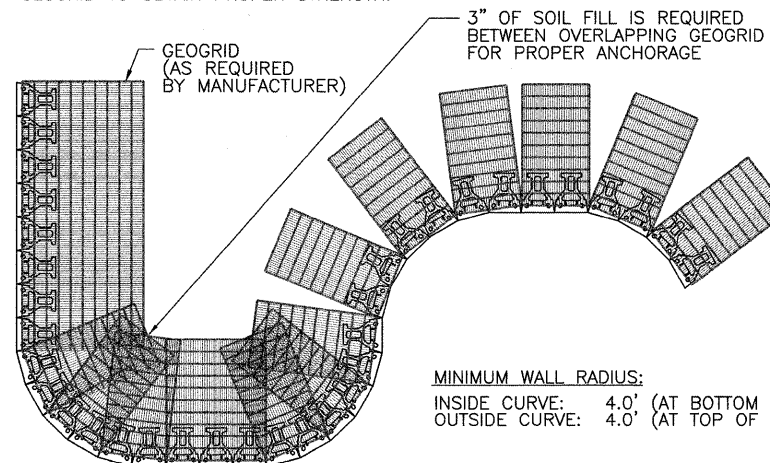
LEVELING PAD DETAIL
N.T.S.



TOP OF WALL STEPS
N.T.S.

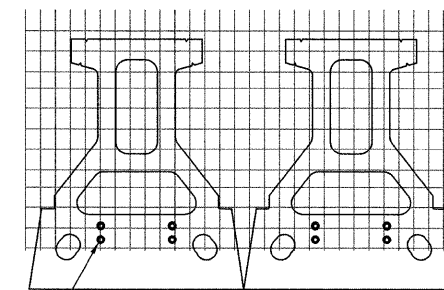
NOTES:

1. CHECK WITH MANUFACTURER SPECIFICATIONS ON CORRECT BACKFILL PROCEDURE.
2. CHECK WITH MANUFACTURER SPECIFICATIONS ON CORRECT DIRECTION OF ORIENTATION FOR GEOGRID TO OBTAIN PROPER STRENGTH.



MINIMUM WALL RADIUS:
INSIDE CURVE: 4.0' (AT BOTTOM OF WALL)
OUTSIDE CURVE: 4.0' (AT TOP OF WALL)

WALL INSTALLATION ON CURVES
N.T.S.

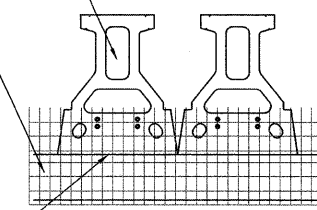


GEOGRID IS TO BE PLACED ON LEVEL BACKFILL AND EXTENDED OVER THE FIBERGLASS PINS. PLACE NEXT UNIT. PULL GRID TAUGHT AND BACKFILL. STAKE AS REQUIRED.

GRID & PIN CONNECTION DETAIL
N.T.S.

SEGMENTAL CONCRETE BLOCK WALL

SIDEWALK RAMP CURB



SEGMENTAL BLOCK WALL/
RAMP CURB JOINT DETAIL
N.T.S.

THOUVENOT,
WADE &
MOERCHEN, INC.
ENGINEERS ♦ SURVEYORS ♦ PLANNERS



- CORPORATE OFFICE
4940 OLD COLLINSVILLE RD.
SWANSEA, ILLINOIS 62226
TEL (618) 624-4488
FAX (618) 624-6688
corp@twm-inc.com
- CARBONDALE OFFICE
206 WEST COLLEGE STREET
CARBONDALE, ILLINOIS 62901
TEL (618) 549-8844
FAX (618) 549-8450
carbondale@twm-inc.com
- EDWARDSVILLE OFFICE
1015B CENTURY DRIVE
EDWARDSVILLE, ILLINOIS 62025
TEL (618) 656-4040
FAX (618) 656-4343
edwardsville@twm-inc.com
- ST. LOUIS OFFICE
1001 CRAIG ROAD, SUITE 260
ST. LOUIS, MISSOURI 63146
TEL (314) 236-5052
FAX (314) 872-2194
stlouis@twm-inc.com
- WATERLOO OFFICE
113 SOUTH MAIN STREET
WATERLOO, ILLINOIS 62298
TEL (618) 939-5050
FAX (618) 939-3938
waterloo@twm-inc.com

PROFESSIONAL REGISTRATIONS	LICENSE NO.
ILLINOIS PROFESSIONAL DESIGN FIRM	184-001220
PROFESSIONAL ENGINEERING CORP.	62-035370
PROFESSIONAL STRUCTURAL ENGR. CORP.	81-005202
ILLINOIS PROF. LAND SURVEYING CORP.	048-000029
MISSOURI PROFESSIONAL ENGR. CORP.	NC 001528
MISSOURI LAND SURVEYING CORP.	NC 000346

TITLE: SEGMENTAL CONCRETE BLOCK WALL DETAILS

PROJECT: PEDESTRIAN SIDEWALKS ALONG ILLINOIS ROUTE 159 VILLAGE OF SWANSEA ST. CLAIR COUNTY, ILLINOIS

REV.	DATE	DESCRIPTION
△		
△		
△		

PLAN STATUS:

100% 7/15/09	
<input type="checkbox"/> ISSUED FOR REVIEW	<input type="checkbox"/> ISSUED FOR BIDDING
<input checked="" type="checkbox"/> ISSUED FOR CONSTR.	<input type="checkbox"/> RECORD DRAWING
DRAWN BY: B.JG	SHEET
DESIGNED BY: B.JG	51
CHECKED BY: J.W.F.	OF 83 SHEETS
APPROVED BY: S.J.K.	PROJECT DESCRIPTION
PROJECT NUMBER: T16000184A	SWANSEA SIDEWALKS