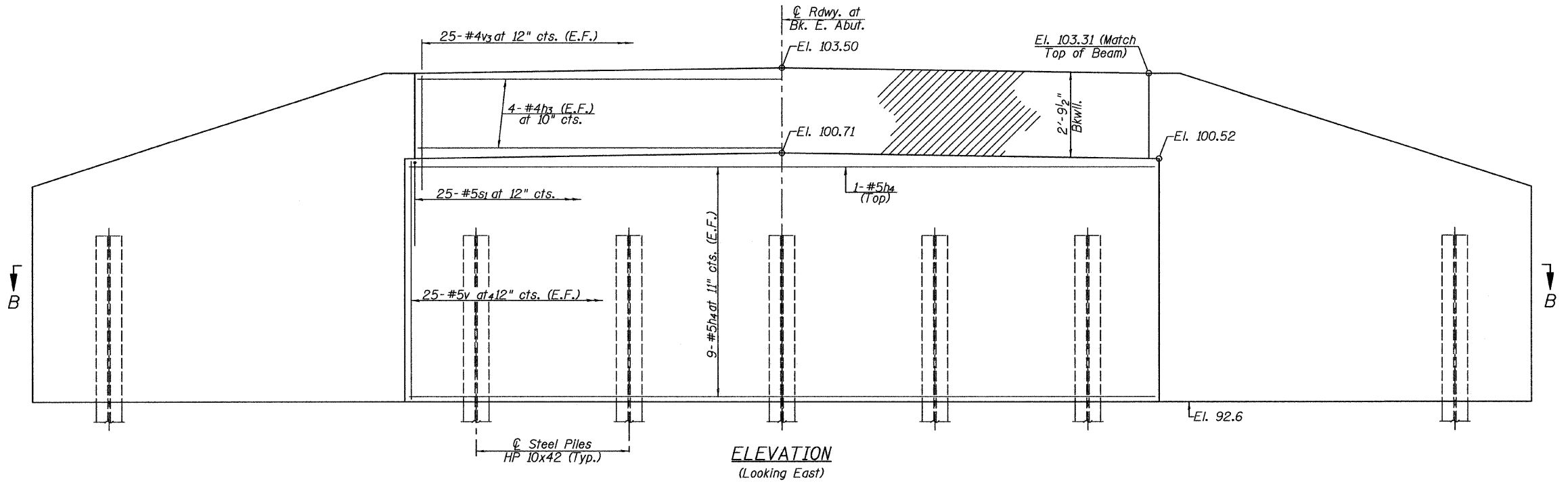
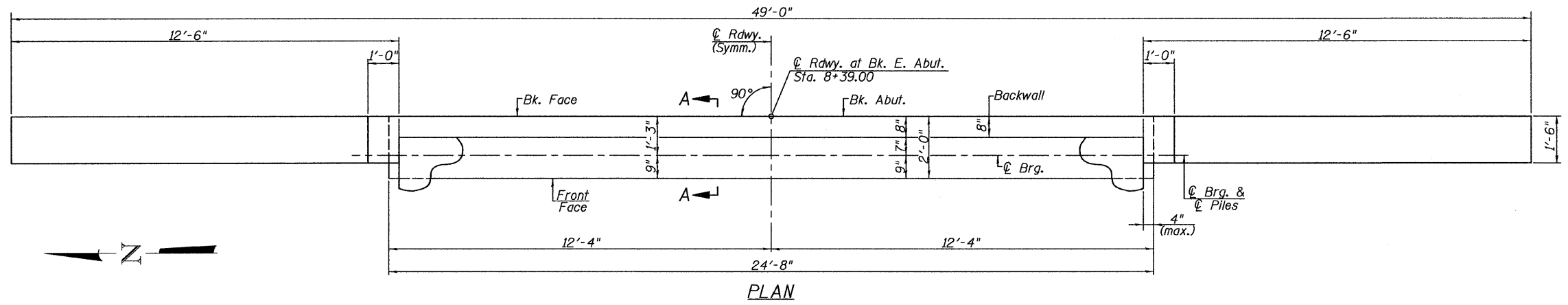


PILE DATA

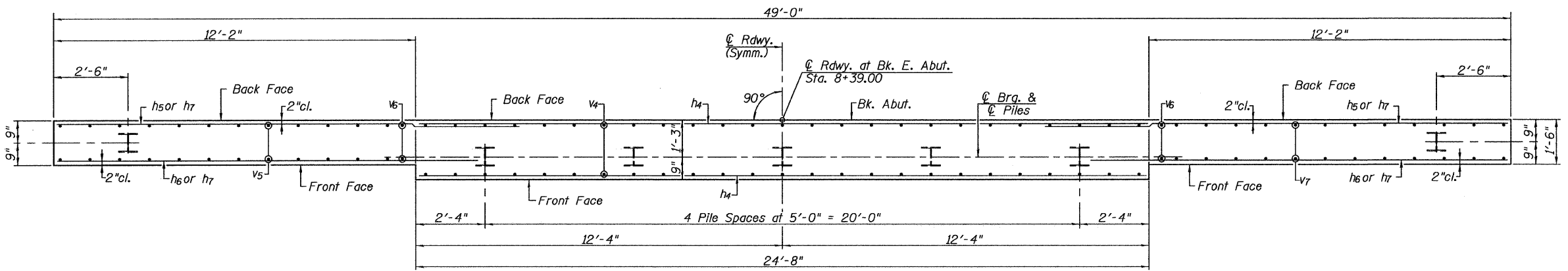
East Abut.
 Type: Steel HP 10x42
 Nominal Required Bearing: 335 Kips
 Factored Resistance Available: 167 Kips
 Estimated Pile Length: 53'
 Number of Production: 6
 Number of Test Piles: 1



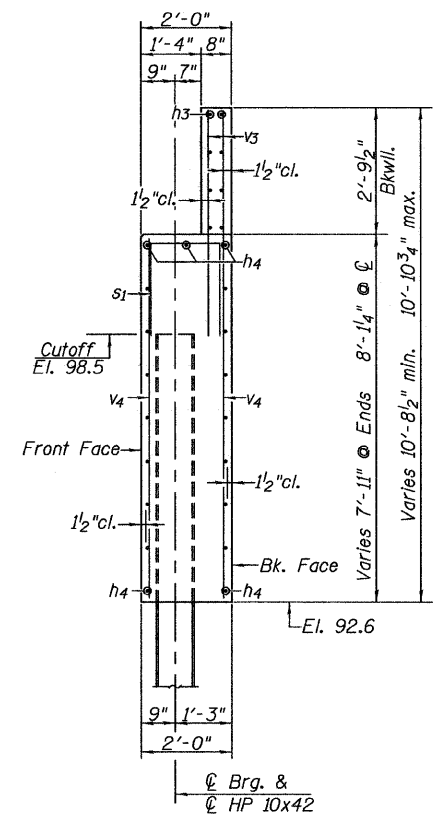
ELEVATION
(Looking East)



PLAN




SECTION B-B



SECTION A-A

EAST ABUTMENT
 T.R. RTE. 81 OVER STREAM
 SECTION 05-10012-00-BR
 JERSEY COUNTY

 <p>Allen Henderson & Associates, Inc. Civil and Structural Engineers Springfield, IL. 62703 Phone: (217)544-8033 IL. Design Firm No. 184-001907</p>	SHEET NO. 6	T.R. RTE. 81	SECTION 05-10012-00-BR	COUNTY JERSEY	TOTAL SHEETS 19	SHEET NO. 10
	8 SHEETS	CONTRACT NO. 97409				
	FED. ROAD DIST. NO. ILLINOIS FED. AID PROJECT					