

F.A.I.L. RTE.	SECTION	COUNTY	TOTAL SHEETS	SHEET NO.
8892	09-00099-00-RS	MADISON	14	1
FEDERAL AID PROJECT		ILLINOIS CONTRACT NO. 97413		

STATE OF ILLINOIS
DEPARTMENT OF TRANSPORTATION
DIVISION OF HIGHWAYS

**PROPOSED
HIGHWAY PLANS**

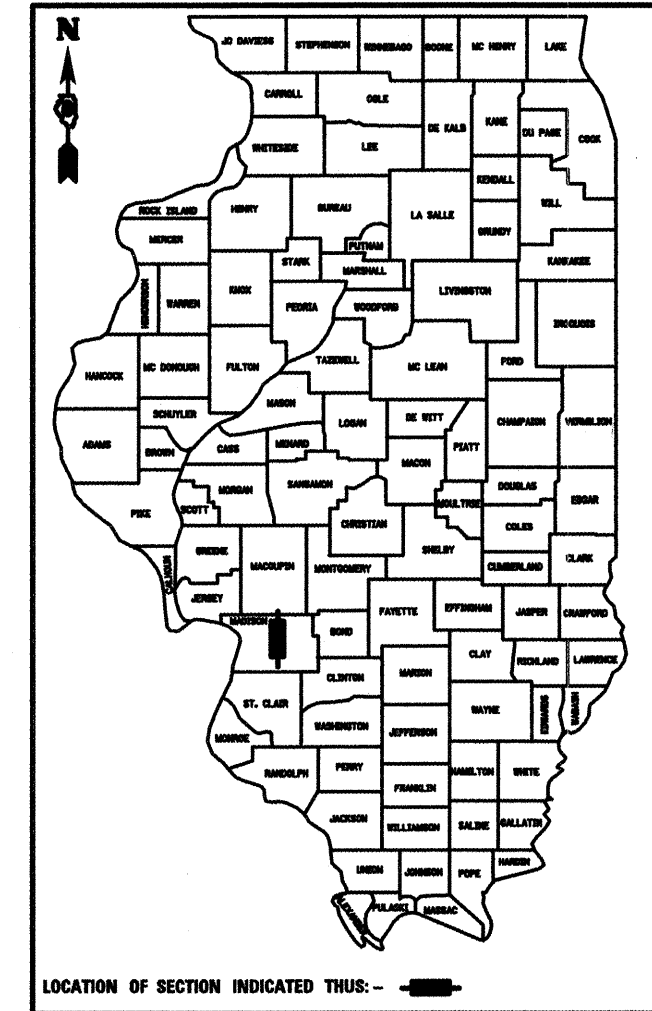
ARRA PROGRAM
RESURFACING
FAU ROUTE 8892 (MADISON AVE.)
SECTION 09-00099-00-RS
PROJECT ARA-5011(268)
JOB NO C-98-347-09
CITY OF EDWARDSVILLE
MADISON COUNTY

INDEX OF SHEETS

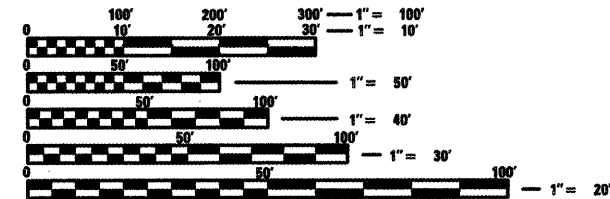
- 1 COVER SHEET
- 2 SUMMARY OF QUANTITIES & GENERAL NOTES
- 3-4 TYPICAL SECTIONS
- 5 SCHEDULES
- 6-10 PLAN AND PROFILE SHEETS
- 11-13 INTERSECTION DETAIL SHEETS
- 14 CONSTRUCTION DETAILS

LIST OF STANDARDS

- 000001-05
- 424001-05
- 442201-03
- 604001-03
- 606001-04
- 701301-03
- 701311-03
- 701501-05
- 701901-01
- 720001-01
- 720006-02
- 729001-01
- 780001-02
- BLR 18-5



T
4
N

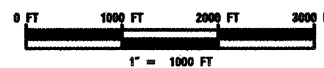


FULL SIZE PLANS HAVE BEEN PREPARED USING STANDARD ENGINEERING SCALES. REDUCED SIZED PLANS WILL NOT CONFORM TO STANDARD SCALES. IN MAKING MEASUREMENTS ON REDUCED PLANS, THE ABOVE SCALES MAY BE USED.

J.U.L.I.E.
JOINT UTILITY LOCATION INFORMATION FOR EXCAVATION
1-800-892-0123
OR 811

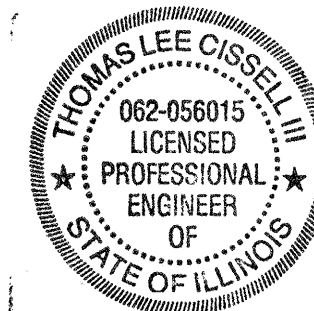
ROADWAY CLASSIFICATION = URBAN COLLECTOR
DESIGN SPEED = 30 MPH
CURRENT TRAFFIC = 2,700
DESIGN YEAR = 2018

LOCATION MAP



NET LENGTH OF PROJECT 2,686.41 FT (0.51 MILES)

R 8 W



EXPIRES 11/30/2009
TOM CISSELL
P.E. NO. 062-056015

[Signature] 11/06/09
DATE

STATE OF ILLINOIS
DEPARTMENT OF TRANSPORTATION

APPROVED *[Signature]* 11/05/09
MAYOR OF EDWARDSVILLE

PASSED 11/9/09
[Signature]
DISTRICT 8 ENGINEER OF LOCAL ROADS & STREETS

RELEASING FOR BID BASED ON LIMITED REVIEW
[Signature] 11/4/05
DEPUTY DIRECTOR OF HIGHWAYS
REGION 5 ENGINEER

Eastport Business Center 1
100 Lantz Court, Suite 1
Collinsville, IL 62234
Phone: 618 345-2200
Facsimile: 618 345-7233

GATES ASSOCIATES
Consulting Engineers

GENERAL NOTES

- UNDERGROUND FACILITIES, STRUCTURES, AND UTILITIES HAVE BEEN PLOTTED FROM AVAILABLE SURVEYS AND RECORDS. THEIR LOCATIONS MUST BE CONSIDERED TO BE APPROXIMATE ONLY. IT IS POSSIBLE THERE MAY BE OTHERS, THE EXISTENCE OF WHICH IS NOT PRESENTLY KNOWN OR SHOWN. IT IS THE CONTRACTOR'S RESPONSIBILITY TO DETERMINE THEIR EXISTENCE AND EXACT LOCATION AND TO AVOID DAMAGE THERETO. ILLINOIS LAW REQUIRES A MINIMUM 48-HOUR NOTICE TO ALL UTILITY COMPANIES BEFORE DIGGING. FIELD LOCATIONS OF UNDERGROUND FACILITIES MAY BE OBTAINED BY CALLING THE J.U.L.I.E. SYSTEM AT 800-892-0123 AND PROVIDING 48 HOURS ADVANCE NOTICE. NON-J.U.L.I.E. MEMBERS MUST BE NOTIFIED INDIVIDUALLY. AGENCIES KNOWN TO HAVE FACILITIES WITHIN THE PROJECT LIMITS ARE LISTED BELOW.
- ANY FACILITIES OR APPURTENANCES WHICH ARE THE PROPERTY OF ANY PUBLIC UTILITY LOCATED WITHIN THE LIMITS OF CONSTRUCTION SHALL BE RELOCATED OR ADJUSTED BY THEIR RESPECTIVE OWNERS. THE CONTRACTOR SHALL NOTIFY AND COOPERATE WITH THE OWNERS OF ANY SUCH FACILITY IN THEIR REMOVAL AND REARRANGEMENT OPERATIONS IN ORDER THAT THESE OPERATIONS AND THE CONSTRUCTION OF THIS PROJECT MAY PROGRESS IN A REASONABLE MANNER. ALL ROADSIDE OBJECTS (UTILITY POLES, FIRE HYDRANTS, SIGNS, ETC.) SHALL BE RELOCATED TO PROVIDE A MINIMUM OF 1.5 FEET CLEARANCE, MEASURED FROM THE FACE OF CURB TO THE NEAR EDGE OF THE OBJECT.
- THE FOLLOWING UTILITY COMPANIES MAY HAVE FACILITIES LOCATED WITHIN THE LIMITS OF CONSTRUCTION WHICH MAY REQUIRE ADJUSTMENT, RELOCATION OR REMOVAL. ALL ARE MEMBERS OF J.U.L.I.E., UNLESS NOTED OTHERWISE.

 AT&T (TELEPHONE)
 203 GOETHE STREET
 COLLINSVILLE, IL 62234
 (618) 346-6400

 CITY OF EDWARDSVILLE (WATER & SEWER)
 118 HILLSBORO AVENUE
 EDWARDSVILLE, IL 62025
 (618) 652-7535

 CHARTER COMMUNICATIONS
 210 WEST DIVISION STREET
 MARYVILLE, IL 62062
 (618) 277-2288

 AMEREN IP (GAS & ELECTRIC)
 2600 NORTH CENTER
 MARYVILLE, IL 62062
 (618) 346-1287
- THE ABOVE INFORMATION REPRESENTS THE BEST INFORMATION AVAILABLE TO THE LOCAL AGENCY AND IS ONLY INCLUDED FOR THE CONVENIENCE OF THE BIDDER. IT IS UNDERSTOOD AND AGREED THAT THE CONTRACTOR HAS TAKEN THE FOREGOING INTO CONSIDERATION IN PREPARING HIS/HER BID, AND NO ADDITIONAL COMPENSATION WILL BE ALLOWED FOR ANY DELAYS OR INCONVENIENCE CAUSED BY SAME.
- THE CONTRACTOR SHALL VERIFY ALL DIMENSIONS AND CONDITIONS IN THE FIELD PRIOR TO ORDERING MATERIALS AND COMMENCING CONSTRUCTION.
- THE CONTRACTOR SHALL STAGE ALL WORK IN SUCH A WAY AS TO MAINTAIN INGRESS AND EGRESS TO ALL ADJUTTING PROPERTIES AT ALL TIMES DURING CONSTRUCTION.
- THE CONTRACTOR SHALL CONFINE ALL OPERATIONS TO THE CONSTRUCTION LIMITS LINE SHOWN ON THE PLANS. ANY AREA DISTURBED BEYOND THESE LIMITS SHALL BE RESTORED TO ITS ORIGINAL CONDITION AT THE CONTRACTOR'S EXPENSE.
- THE CONTRACTOR SHALL FERTILIZE, SEED, AND MULCH ALL EARTH SURFACES DISTURBED DURING THE CONSTRUCTION OF SIDEWALK, CURB AND GUTTER, AND OTHER VARIOUS CONSTRUCTION ITEMS. THE COST TO FERTILIZE, SEED, AND MULCH ALL DISTURBED EARTH SURFACES WITHIN CONSTRUCTION LIMITS WILL BE INCLUDED IN THE COST OF PORTLAND CEMENT CONCRETE SIDEWALK, 4 INCH AND NO ADDITIONAL COMPENSATION WILL BE ALLOWED.

- ANY UNSUITABLE MATERIAL ENCOUNTERED DURING CONSTRUCTION SHALL BE REMOVED BY THE CONTRACTOR AND REPLACED WITH SUITABLE MATERIAL AS APPROVED BY THE ENGINEER. IF NOT SPECIFIED IN THE PLANS AS "REPAIR UNSTABLE SUBBASE", THIS WORK WILL BE PAID ACCORDING TO ARTICLE 109.04 OF THE "STANDARD SPECIFICATIONS FOR ROAD AND BRIDGE CONSTRUCTION."
- THE CONTRACTOR SHALL NOTE THE LOCATION OF ALL MANHOLE AND VALVE VAULT FRAMES AND LIDS LOCATED WITHIN THE RESURFACING LIMITS. APPROPRIATE CARE SHALL BE TAKEN TO PROTECT THESE ITEMS DURING MILLING OPERATIONS.
- ALL PATCHING ON THIS PROJECT SHALL BE COMPLETED AFTER MILLING OPERATIONS. MILLED SURFACE MUST BE RESURFACED WITHIN 10 CALENDAR DAYS. FULL DEPTH SAW CUTS SHALL BE REQUIRED ALONG THE LIMITS OF THE PATCH. FULL DEPTH SAW CUTS WILL NOT BE PAID FOR SEPARATELY, BUT SHALL BE INCLUDED IN THE CONTRACT UNIT COST BID OF THE PAVEMENT PATCHING INVOLVED AND NO ADDITIONAL COMPENSATION WILL BE ALLOWED.
- THE PAVEMENT MARKING LOCATIONS SHOWN IN THE PLANS ARE APPROXIMATE. PROPOSED CROSSWALKS AND STOP BARS SHALL BE ADJUSTED AS DIRECTED BY THE ENGINEER, IF NECESSARY, TO MATCH FIELD CONDITIONS.
- APPLICATION RATES USED FOR QUANTITY ESTIMATES ARE AS FOLLOWS:

 BITUMINOUS MATERIALS (PRIME COAT) 0.075 GAL/SY
 AGGREGATE (PRIME COAT) 3 LBS/SY
 HOT-MIX ASPHALT 112 LBS/SQYD/INCH THICKNESS
- THE FOLLOWING SYMBOLS, ABBREVIATIONS, AND PATTERNS SUPPLEMENT OR SUPERCEDE HIGHWAY STANDARD 000001:

BO	BY OTHERS (USED IN CONJUNCTION WITH TBA & TBR)
CONSTR	CONSTRUCTION
CP	CONTROL POINT
ELEV	ELEVATION
NF	NOW OR FORMERLY
OC	OIL AND CHIP
PERM	PERMANENT
PVC	POLYVINYL CHLORIDE PIPE
TBA	TO BE ADJUSTED
TBR	TO BE RELOCATED
TBRR	TO BE REMOVED AND RELOCATED
TYP	TYPICAL
W	WIDTH

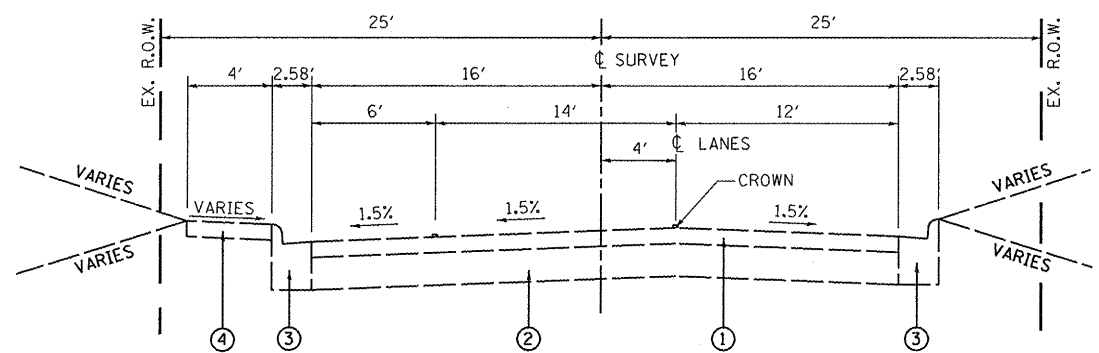
COMMITMENTS

NONE

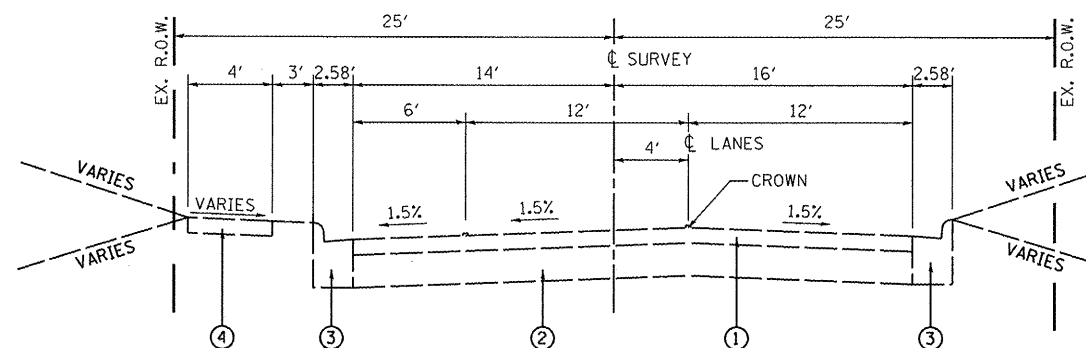
SUMMARY OF QUANTITIES

CODE NO.	ITEM	UNIT	TOTAL QUANTITIES
20201200	REMOVAL AND DISPOSAL OF UNSUITABLE MATERIAL	CU YD	206
35102400	AGGREGATE BASE COURSE, TYPE B 12"	SQ YD	206
40600100	BITUMINOUS MATERIALS (PRIME COAT)	GALLON	684
40600300	AGGREGATE (PRIME COAT)	TON	14
40603315	HOT-MIX ASPHALT SURFACE COURSE, MIX "C", N70	TON	1,022
42400100	PORTLAND CEMENT CONCRETE SIDEWALK 4 INCH	SQ FT	1,431
42400800	DETECTABLE WARNINGS	SQ FT	76
44000157	HOT-MIX ASPHALT SURFACE REMOVAL, 2"	SQ YD	9,126
44000500	COMBINATION CURB AND GUTTER REMOVAL	FOOT	297
44000600	SIDEWALK REMOVAL	SQ FT	1,135
44201749	CLASS D PATCHES, TYPE I, 9 INCH	SQ YD	27
44201753	CLASS D PATCHES, TYPE II, 9 INCH	SQ YD	26
44201757	CLASS D PATCHES, TYPE III, 9 INCH	SQ YD	58
44201759	CLASS D PATCHES, TYPE IV, 9 INCH	SQ YD	95
* 60255800	MANHOLES TO BE ADJUSTED WITH NEW TYPE 1 FRAME, CLOSED LID	EACH	11
* 60260200	INLETS TO BE ADJUSTED (SPECIAL)	EACH	6
60600605	CONCRETE CURB, TYPE B	FOOT	130
60600500	COMBINATION CONCRETE CURB AND GUTTER, TYPE B-6.24	FOOT	313
67100100	MOBILIZATION	L SUM	1
* 70101700	TRAFFIC CONTROL AND PROTECTION	L SUM	1
* 70300100	SHORT-TERM PAVEMENT MARKING	FOOT	4,004
70300220	TEMPORARY PAVEMENT MARKING - LINE 4"	FOOT	1,000
70300280	TEMPORARY PAVEMENT MARKING - LINE 24"	FOOT	167
70301000	WORK ZONE PAVEMENT MARKING REMOVAL	SQ FT	685
72000100	SIGN PANEL - TYPE 1	SQ FT	24
72800100	TELESCOPING STEEL SIGN SUPPORT	FOOT	66
S 78000200	THERMOPLASTIC PAVEMENT MARKING - LINE 4"	FOOT	1,000
S 78000650	THERMOPLASTIC PAVEMENT MARKING - LINE 24"	FOOT	417
S 78001180	PAINT PAVEMENT MARKING - LINE 24"	FOOT	316

* SPECIAL PROVISION
 S SPECIALTY ITEM



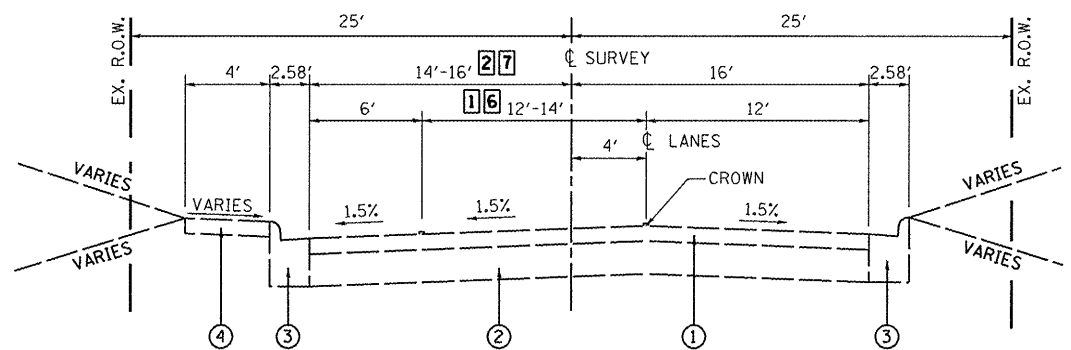
EXISTING MADISON AVENUE
STA 15+75 TO STA 17+64 •
(NOT TO SCALE)



EXISTING MADISON AVENUE
STA 19+38 TO STA 20+90
STA 27+74 TO STA 36+56.94
(NOT TO SCALE)

LEGEND

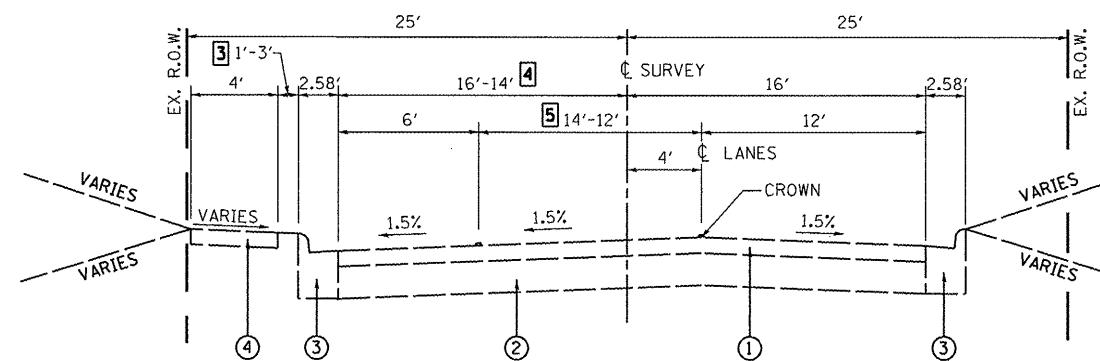
- ① EXISTING HOT-MIX ASPHALT SURFACE COURSE, 3"
- ② EXISTING HOT-MIX ASPHALT BASE COURSE, 6"
- ③ EXISTING COMBINATION CONCRETE CURB & GUTTER B-6.24
- ④ EXISTING PCC SIDEWALK, 4"
- ⑤ PROPOSED HOT-MIX ASPHALT SURFACE COURSE, MIX "C", N70, 2"
- ⑥ PROPOSED HOT-MIX ASPHALT REMOVAL, 2"
- ⑦ PROPOSED BITUMINOUS MATERIALS PRIME COAT
- ⑧ PROPOSED AGGREGATE PRIME COAT



EXISTING MADISON AVENUE
STA 9+70.53 TO STA 15+75
STA 20+90 TO STA 27+74
(NOT TO SCALE)

- ① VARIES 12' TO 14' FROM STA. 15+25 TO STA. 15+75
- ② VARIES 14' TO 16' FROM STA. 15+25 TO STA. 15+75
- ③ VARIES 1' TO 3' FROM STA. 18+88 TO STA. 19+36
- ④ VARIES 14' TO 16' FROM STA. 18+88 TO STA. 19+36
- ⑤ VARIES 12' TO 14' FROM STA. 18+88 TO STA. 19+36
- ⑥ 12' WIDE FROM STA. 20+90 TO STA. 27+74
- ⑦ 14' WIDE FROM STA. 20+90 TO STA. 27+74

• OMISSION FROM STATION 17+24 TO STATION 17+96



EXISTING MADISON AVENUE
STA 17+64 TO STA 19+38 •
(NOT TO SCALE)

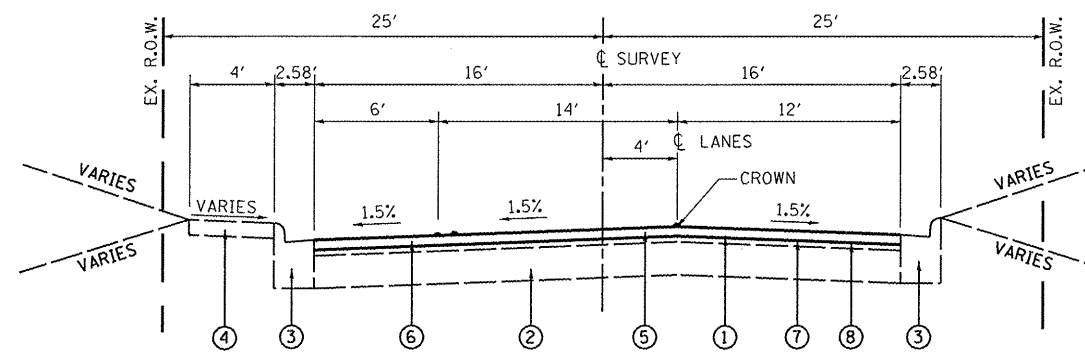
STATE OF ILLINOIS
DEPARTMENT OF TRANSPORTATION

TYPICAL SECTIONS

SCALE: NONE SHEET NO. 1 OF 2 SHEETS

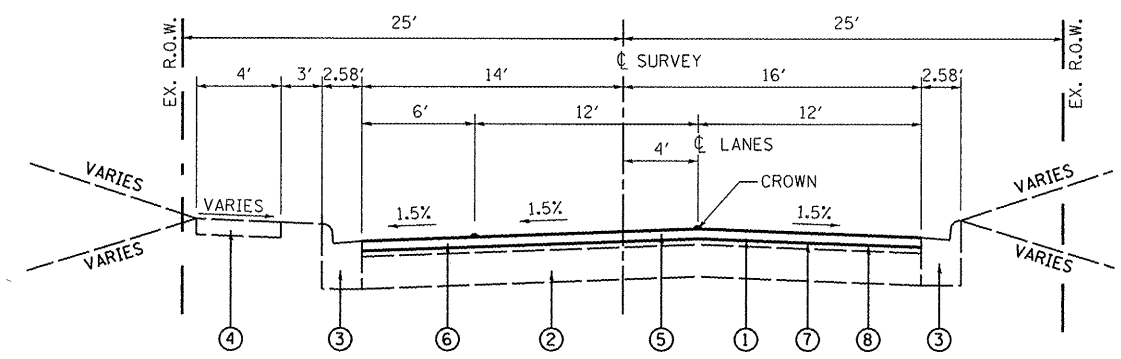
F.A. RTE.	SECTION	COUNTY	TOTAL SHEETS	SHEET NO.
8892	09-00099-00-RS	MADISON	14	3
MADISON AVENUE RESURFACING			CONTRACT NO. 97413	
ILLINOIS FED. AID PROJECT				

FILE NAME =	USER NAME = travis	DESIGNED - PAM	REVISED -
H:\P\29012\Microstation\08-29012\typical.dgn		DRAWN - JTH	REVISED -
	PLOT SCALE = 48.0000' / IN.	CHECKED -	REVISED -
	PLOT DATE = 11/5/2009	DATE -	REVISED -

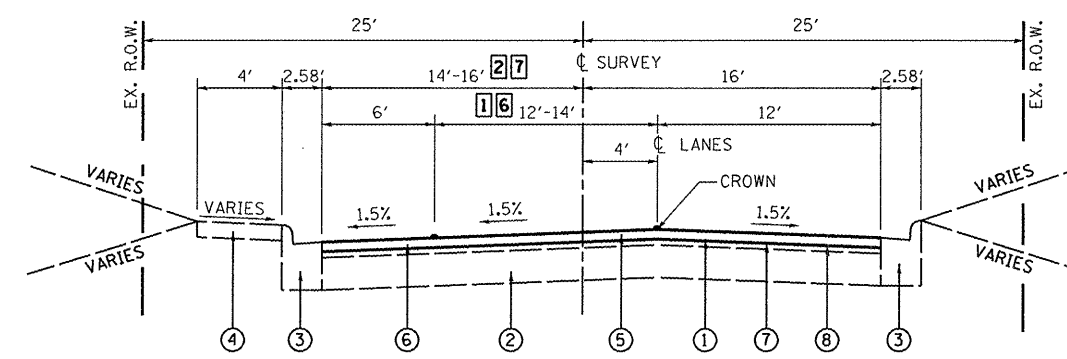


PROPOSED MADISON AVENUE
 STA 15+75 TO STA 17+64
 (NOT TO SCALE)

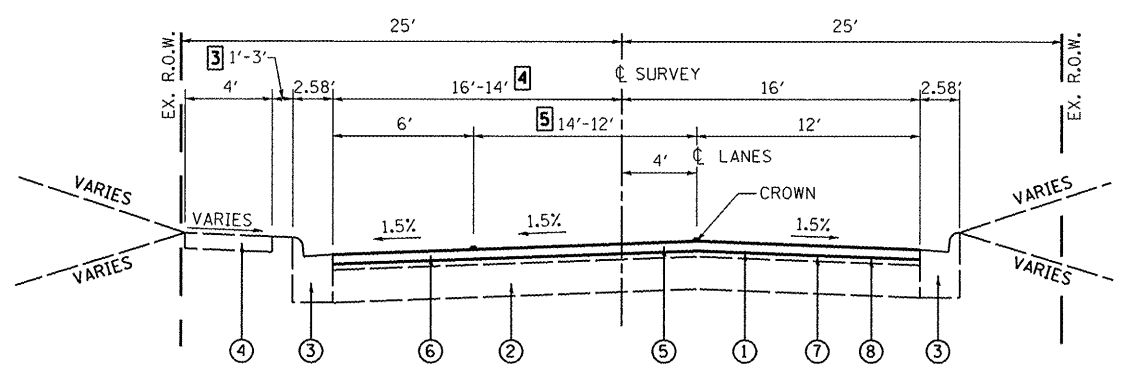
HOT-MIX ASPHALT DESIGN MIX TABLE		
MIXTURE USE	SURFACE COURSE	PAVEMENT PATCHES
THICKNESS	2"	9"
AC/PG	PG 70-22	PG 64-22
RAP % (MAX.)	10%	15%
DESIGN AIR VOIDS	4% @ Ndes = 70	4% @ Ndes = 70
MIX COMPOSITION	IL-9.5	IL-19.0
FRICITION AGGREGATE	MIXTURE C	MIXTURE B



PROPOSED MADISON AVENUE
 STA 19+38 TO STA 20+90
 STA 27+74 TO STA 36+56.94
 (NOT TO SCALE)



PROPOSED MADISON AVENUE
 STA 9+70.53 TO STA 15+75
 STA 20+90 TO STA 27+74
 (NOT TO SCALE)



PROPOSED MADISON AVENUE
 STA 17+64 TO STA 19+38
 (NOT TO SCALE)

LEGEND

- ① EXISTING HOT-MIX ASPHALT SURFACE COURSE, 3"
- ② EXISTING HOT-MIX ASPHALT BASE COURSE, 6"
- ③ EXISTING COMBINATION CONCRETE CURB & GUTTER B-6.24
- ④ EXISTING PCC SIDEWALK, 4"
- ⑤ PROPOSED HOT-MIX ASPHALT SURFACE COURSE, MIX "C", N70, 2"
- ⑥ PROPOSED HOT-MIX ASPHALT REMOVAL, 2"
- ⑦ PROPOSED BITUMINOUS MATERIALS PRIME COAT
- ⑧ PROPOSED AGGREGATE PRIME COAT

- ① VARIES 12' TO 14' FROM STA. 15+25 TO STA. 15+75
- ② VARIES 14' TO 16' FROM STA. 15+25 TO STA. 15+75
- ③ VARIES 1' TO 3' FROM STA. 18+88 TO STA. 19+38
- ④ VARIES 14' TO 16' FROM STA. 18+88 TO STA. 19+38
- ⑤ VARIES 12' TO 14' FROM STA. 18+88 TO STA. 19+38
- ⑥ 12' WIDE FROM STA. 20+90 TO STA. 27+74
- ⑦ 14' WIDE FROM STA. 20+90 TO STA. 27+74

• OMISSION FROM STATION 17+24 TO STATION 17+96

PAVEMENT MARKING SCHEDULE

STATION	STATION	OFFSET	SHORT-TERM PAVT MKING	TEMP PAVT MK LINE 4	TEMP PAVT MK LINE 24	WORK ZONE PAVT MK REM	THPL PVT MK LINE 4 (NOTE 1)	THPL PVT MK LINE 24 (NOTE 1)	PAINT PVT MK LINE 24 (NOTE 1)	REMARKS
			(FOOT)	(FOOT)	(FOOT)	(SQ FT)	(FOOT)	(FOOT)	(FOOT)	
MADISON AVENUE										
09+77	09+85	CL					73			CROSSWALK - WHITE
09+84	10+20	LT					78			CROSSWALK - WHITE
09+87	10+01	LT	168		14	28	14			STOP BAR -WHITE
10+03	10+16	RT	144		12	24	12			STOP BAR -WHITE
10+32	10+92	RT	240	120		40	120			CENTERLINE - DOUBLE YELLOW
10+92	17+19	RT	314	157		52	157			CENTERLINE - SKIP DASH YELLOW
10+96	16+73	LT	122	61		20	61			PARKING STRIPES -WHITE
17+19	17+21	RT	144		12	24		12		STOP BAR -WHITE
17+29	17+37	CL						64		CROSSWALK - WHITE
17+48	17+89	LT						84		CROSSWALK - WHITE
17+48	17+78	RT						64		CROSSWALK - WHITE
17+48	17+65	LT	192		16	32		16		STOP BAR -WHITE
17+63	17+79	RT	192		16	32		16		STOP BAR -WHITE
17+88	17+96	CL						72		CROSSWALK - WHITE
17+99	18+01	LT	240		20	40		20		STOP BAR -WHITE
18+01	36+41	RT	920	460		152	460			CENTERLINE - SKIP DASH YELLOW
18+67	20+12	LT	40	20		7	20			PARKING STRIPES -WHITE
20+73	21+03	LT					64			CROSSWALK - WHITE
20+76	20+89	LT	156		13	26		13		STOP BAR -WHITE
21+66	26+94	LT	196	98		32	98			PARKING STRIPES -WHITE
25+22	25+41	RT	228		19	38		19		STOP BAR -WHITE
27+52	27+86	LT					67			CROSSWALK - WHITE
27+54	27+69	LT	168		14	28		14		STOP BAR -WHITE
28+30	35+84	LT	168	84		28	84			PARKING STRIPES -WHITE
29+10	29+29	RT	228		19	38		19		STOP BAR -WHITE
36+41	36+43	RT	144		12	24		12		STOP BAR -WHITE
TOTAL:			4,004	1,000	167	665	1,000	417	316	

PAVEMENT MARKING NOTES:

- SEE HIGHWAY STANDARD 780001 FOR PAVEMENT MARKING DETAILS

PAVEMENT SCHEDULE

STATION	STATION	OFFSET	REM & DISP UNS MATL	AGG BASE CSE B 12	BIT MATLS PR CT (NOTE 1)	AGG PR CT (NOTE 1)	HMA SC "C" N70 (NOTE 1)	HMA SURF REM 2"	CL D PATCH T1 9	CL D PATCH T2 9	CL D PATCH T3 9	CL D PATCH T4 9
			(CU YD)	(SQ YD)	(GAL)	(TON)	(TON)	(SQ YD)	(SQ YD)	(SQ YD)	(SQ YD)	(SQ YD)
MADISON AVENUE												
09+70	17+24	CL			199	4	297	2,656				
10+78	10+83	LT	3	3					3			
13+80	13+88	LT	4	4					4			
14+26	14+28	LT	1	1					1			
14+39	14+46	LT	3	3					3			
16+83	16+88	RT	4	4					4			
17+18	17+24	RT	4	4					4			
17+96	36+39	CL			485	10	725	6,470				
17+97	18+07	LT	7	7						7		
20+60	20+81	LT	23	23							23	
24+84	24+86	LT	1	1								23
27+30	28+01	RT	95	95								95
29+19	29+28	RT	5	5						5		
29+82	30+09	RT	18	18							18	
30+56	30+60	RT	2	2					2			
31+70	31+96	RT	17	17								17
31+77	31+85	LT	5	5						5		
33+02	33+04	RT	1	1					1			
34+03	34+11	LT	4	4					4			
34+25	34+45	RT	9	9						9		
35+09		LT										
35+36		RT										
TOTAL:			206	206	684	14	1,022	9,126	27	26	68	96

PAVEMENT NOTES:

- APPLICATION RATES USED FOR QUANTITY ESTIMATES ARE AS FOLLOWS:
 BITUMINOUS MATERIALS PRIME COAT 0.075 GAL/SY
 AGGREGATE (PRIME COAT) 3 LBS/SY
 HOT-MIX ASPHALT 112 LBS/SY/INCH THICKNESS

CURB AND GUTTER SCHEDULE

STATION	STATION	OFFSET	COMB CURB GUTTER REM	CONC CURB TB6	COMB CC&G TB6.24
			(LF)	(LF)	(LF)
MADISON AVENUE					
10+57	10+81	RT	24		24
17+20	17+48	LT	44		44
17+26	17+47	RT	45	22	45
17+79	17+99	RT	36		36
17+82	18+00	LT	23	14	19
20+57	20+76	LT	27	28	27
21+01	21+20	LT	28	26	28
27+40	27+54	LT	35	9	35
27+81	28+00	LT	35	31	34
31+75	31+96	RT			21
TOTAL:			297	130	313

SIGN SCHEDULE

STATION	OFFSET	TYPE	SIZE (FT X FT)	SIGN PANEL T1 (SQ FT)	TELES STL SIN SUPPORT (NOTE 1) (FOOT)
MADISON AVENUE					
8+46	RT	W11-2	2 X 2	4.0	16.5
8+46	RT	W16-9p	2 X 1	2.0	
9+71	LT	W11-2	2 X 2	4.0	16.5
9+71	LT	W16-7p	2 X 1	2.0	
9+71	RT	W11-2	2 X 2	4.0	16.5
9+71	RT	W16-7p	2 X 1	2.0	
10+98	LT	W11-2	2 X 2	4.0	16.5
10+98	LT	W16-9p	2 X 1	2.0	
TOTAL:				24.0	66

SIGN NOTES:

- TELESCOPING STEEL SIGN SUPPORTS TO BE PAINTED BLACK

SIDEWALK SCHEDULE

STATION	STATION	OFFSET	PC CONC SIDEWALK 4	DETECTABLE WARNINGS	SIDEWALK REM
			(SQ FT)	(SQ FT)	(SQ FT)
MADISON AVENUE					
11+26	11+31	LT	20		20
12+72	12+77	LT	20		20
13+89	14+04	LT	60		60
17+20	17+46	LT	239	12	156
17+26	17+44	RT	176	12	159
17+82	17+99	RT	188	12	104
17+84	18+02	LT	97	8	96
20+52	20+72	LT	111	8	109
21+04	21+28	LT	198	8	158
24+02	24+05	LT	6		6
27+26	27+51	LT	184	8	164
27+85	28+01	LT	132	8	83
TOTAL:			1,431	76	1,135

FILE NAME = H:\P\29012\Mapstation\29012 cv01.dgn
 USER NAME = travis
 PLOT SCALE = 40.0000' / IN.
 PLOT DATE = 11/6/2009

DESIGNED -
 DRAWN -
 CHECKED -
 DATE -

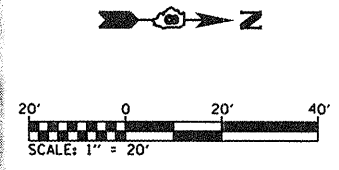
REVISED -
 REVISED -
 REVISED -
 REVISED -

**STATE OF ILLINOIS
 DEPARTMENT OF TRANSPORTATION**

SCHEDULES

SCALE: NONE SHEET NO. 1 OF 1 SHEETS

F.A.U. RTE.	SECTION	COUNTY	TOTAL SHEETS	SHEET NO.
8892	09-00099-00-RS	MADISON	14	5
MADISON AVENUE RESURFACING			CONTRACT NO. 97413	
[ILLINOIS] FED. AID PROJECT				



CP - 1 PK NAIL
 N - 2,359.005.3970 E - 775.369.076
 ELEV. 541.95

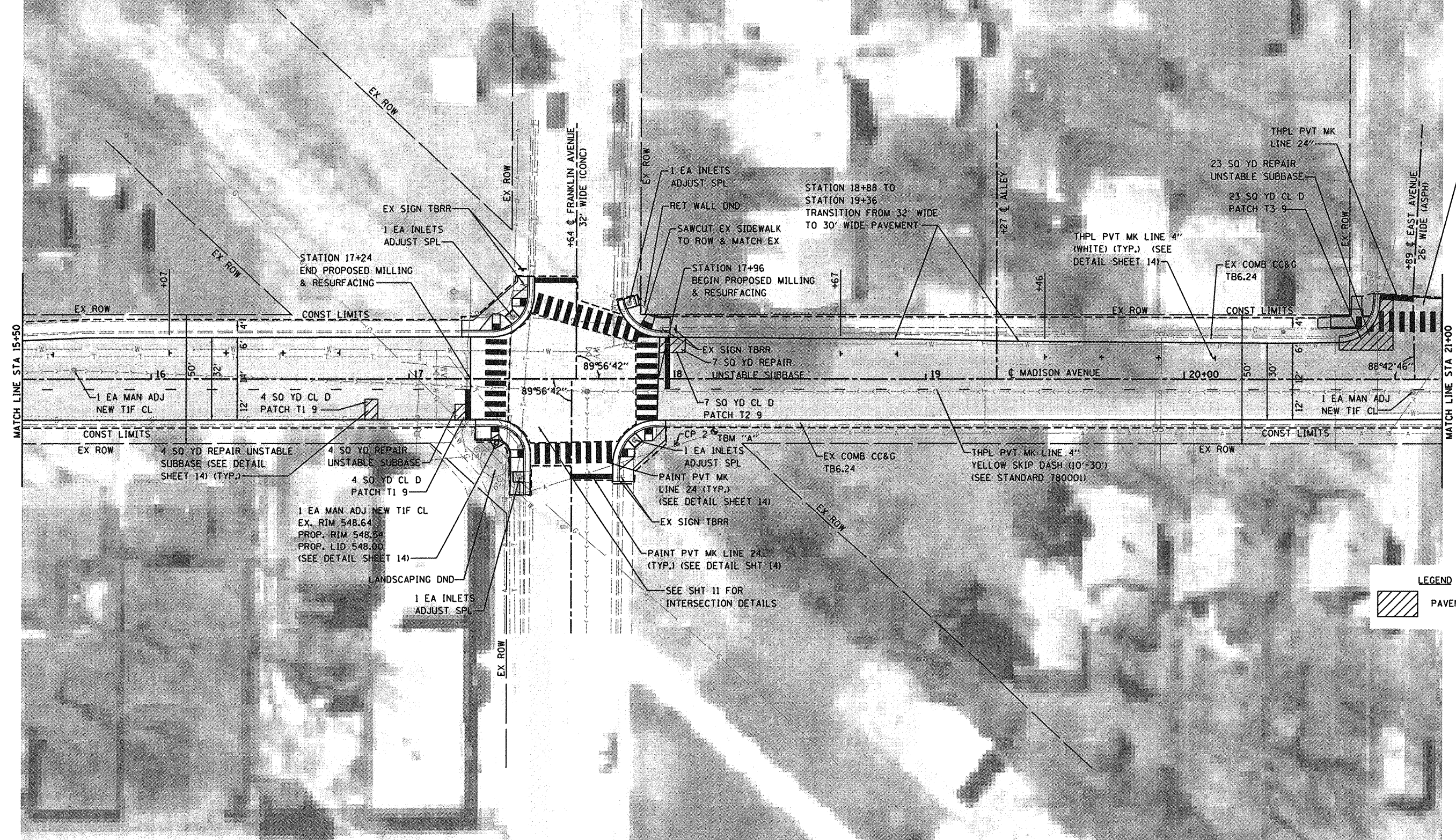
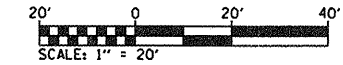
FILE NAME =	USER NAME = travis	DESIGNED - PAM	REVISED -
H:\P\29012\Microstation\08-29012ppsheets.dgn		DRAWN - JTH	REVISED -
PLOT SCALE = 40.0000' / IN.		CHECKED -	REVISED -
PLOT DATE = 11/6/2009		DATE -	REVISED -

**STATE OF ILLINOIS
 DEPARTMENT OF TRANSPORTATION**

PLAN AND PROFILE SHEETS

SCALE: 1"=20' SHEET NO. 1 OF 5 SHEETS STA. 10+00 TO STA. 15+50

F.A.U. RTE.	SECTION	COUNTY	TOTAL SHEETS	SHEET NO.
8892	09-00099-00-RS	MADISON	14	6
MADISON AVENUE RESURFACING		CONTRACT NO. 97413		
ILLINOIS FED. AID PROJECT				



SEE SHT 12 FOR INTERSECTION DETAILS

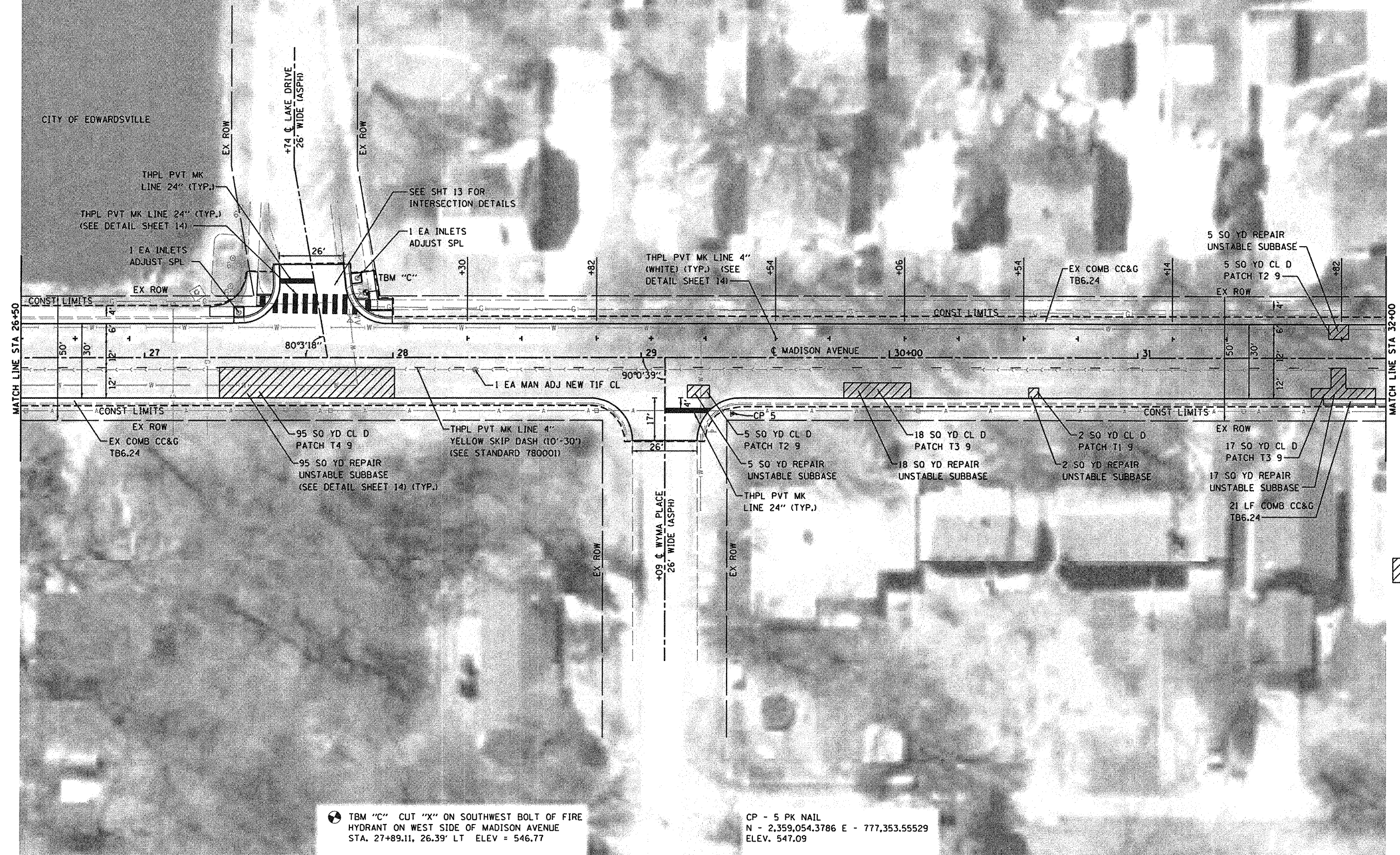
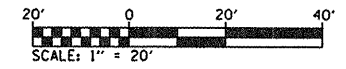
LEGEND

 PAVEMENT PATCHING

CP - 2 IRON BAR WITH CAP
N - 2,359,054.932 E - 776,220.095
ELEV. 548.65

TBM "A" BENCHTIE "BM" IN POWER POLE
ON EAST SIDE OF MADISON AVENUE
STA. 18+18.01, 20.34' RT ELEV = 551.04

FILE NAME = H:\P\29012\Microstation\08-29012ppsheets.dgn	USER NAME = travis	DESIGNED - PAM	REVISED -	STATE OF ILLINOIS DEPARTMENT OF TRANSPORTATION	PLAN AND PROFILE SHEETS		F.A.I. RTE. 8892	SECTION 09-00099-00-RS	COUNTY MADISON	TOTAL SHEETS 14	SHEET NO. 7
	PLOT SCALE = 40.0000' / IN.	CHECKED -	REVISED -				MADISON AVENUE RESURFACING	CONTRACT NO. 97413		ILLINOIS FED. AID PROJECT	
	PLOT DATE = 11/6/2009	DATE -	REVISED -				SCALE: 1"=20'	SHEET NO. 2 OF 5 SHEETS	STA. 15+50 TO STA. 21+00		

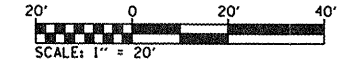


LEGEND
 PAVEMENT PATCHING

TBM "C" CUT "X" ON SOUTHWEST BOLT OF FIRE HYDRANT ON WEST SIDE OF MADISON AVENUE STA. 27+89.11, 26.39' LT ELEV = 546.77


CP - 5 PK NAIL
 N - 2,359,054.3786 E - 777,353.55529
 ELEV. 547.09

FILE NAME = H:\P\29012\macrostation\08-29012ppsheets.dgn	USER NAME = t-revss	DESIGNED - PAM	REVISED -	STATE OF ILLINOIS DEPARTMENT OF TRANSPORTATION	PLAN AND PROFILE SHEETS			F.A.U. RTE. 8892	SECTION 09-00099-00-RS	COUNTY MADISON	TOTAL SHEETS 14	SHEET NO. 9
PLOT SCALE = 40.0000' / IN.	CHECKED -	DATE -	REVISED -		SCALE: 1"=20'	SHEET NO. 4 OF 5 SHEETS	STA. 26+50 TO STA. 32+00	MADISON AVENUE RESURFACING		CONTRACT NO. 97413		
PLOT DATE = 11/6/2009	DATE -	REVISED -	REVISED -		ILLINOIS FED. AID PROJECT							



END IMPROVEMENTS
STA. 36+56.95

LEGEND

 PAVEMENT PATCHING

⊙ TBM "D" BENCHTIE "BM" IN POWER POLE
ON EAST SIDE OF MADISON AVENUE
STA. 36+45.14, 20.73' RT ELEV = 545.71

CP - 6 IRON BAR WITH CAP
N - 778,108.908 E - 2,359,009.134
ELEV. 545.24

FILE NAME =	USER NAME = travis	DESIGNED - PAM	REVISED -
H:\NP\29012\Microstation\08-29012ppsheets.dgn		DRAWN - JTH	REVISED -
PLOT SCALE = 40.0000' / IN.		CHECKED -	REVISED -
PLOT DATE = 11/6/2009		DATE -	REVISED -

**STATE OF ILLINOIS
DEPARTMENT OF TRANSPORTATION**

PLAN AND PROFILE SHEETS

SCALE: 1"=20' SHEET NO. 5 OF 5 SHEETS STA. 32+00 TO STA. 36+39

F.A.J. RTE.	SECTION	COUNTY	TOTAL SHEETS	SHEET NO.
8892	09-00099-00-RS	MADISON	14	10
MADISON AVENUE RESURFACING			CONTRACT NO. 97413	
ILLINOIS FED. AID PROJECT				

SW RADIUS RETURN

PT. NO.	STATION	OFFSET	ELEVATION
1	17+20.30	16.22' LT	548.10 (EOP)
	17+20.30	18.73' LT	548.46 (BC)
2	17+27.02	16.22' LT	548.05 (EOP)
	17+27.02	18.77' LT	548.43 (BC)
3	17+32.02	16.22' LT	547.97 (EOP)
	17+32.02	18.80' LT	547.89 (BC)
	17+32.02	18.80' LT	547.89 (SW)
4	17+35.02	16.56' LT	547.94 (EOP)
	17+35.02	19.21' LT	547.86 (BC)
	17+35.02	19.21' LT	547.86 (SW)
5	17+41.07	19.16' LT	547.88 (EOP)
	17+39.60	21.28' LT	548.26 (BC)
6	17+44.43	22.27' LT	547.90 (EOP)
	17+42.44	23.89' LT	548.28 (BC)
7	17+47.56	28.27' LT	548.01 (EOP)
	17+44.86	28.27' LT	547.93 (BC)
	17+44.86	28.27' LT	547.93 (SW)
8	17+48.01	31.27' LT	548.06 (EOP)
	17+45.51	31.27' LT	547.98 (BC)
	17+45.51	31.27' LT	547.98 (SW)
9	17+48.16	36.21' LT	548.09 (EOP)
	17+45.58	36.41' LT	548.47 (BC)
10	17+48.33	39.69' LT	548.12 (EOP)
	17+45.74	39.74' LT	548.47 (BC)

SW RADIUS RETURN

PT. NO.	STATION	OFFSET	ELEVATION
11	17+41.74	39.83' LT	548.55 (SW)
12	17+41.70	37.81' LT	548.53 (SW)
13	17+39.56	31.28' LT	548.42 (SW)
14	17+39.56	28.28' LT	548.36 (SW)
15	17+39.79	26.93' LT	548.36 (SW)
16	17+36.87	24.21' LT	548.34 (SW)
17	17+35.02	25.21' LT	548.39 (SW)
18	17+32.02	25.21' LT	548.40 (SW)
19	17+24.74	22.76' LT	548.47 (SW)
20	17+20.28	22.73' LT	548.49 (SW)

NW RADIUS RETURN

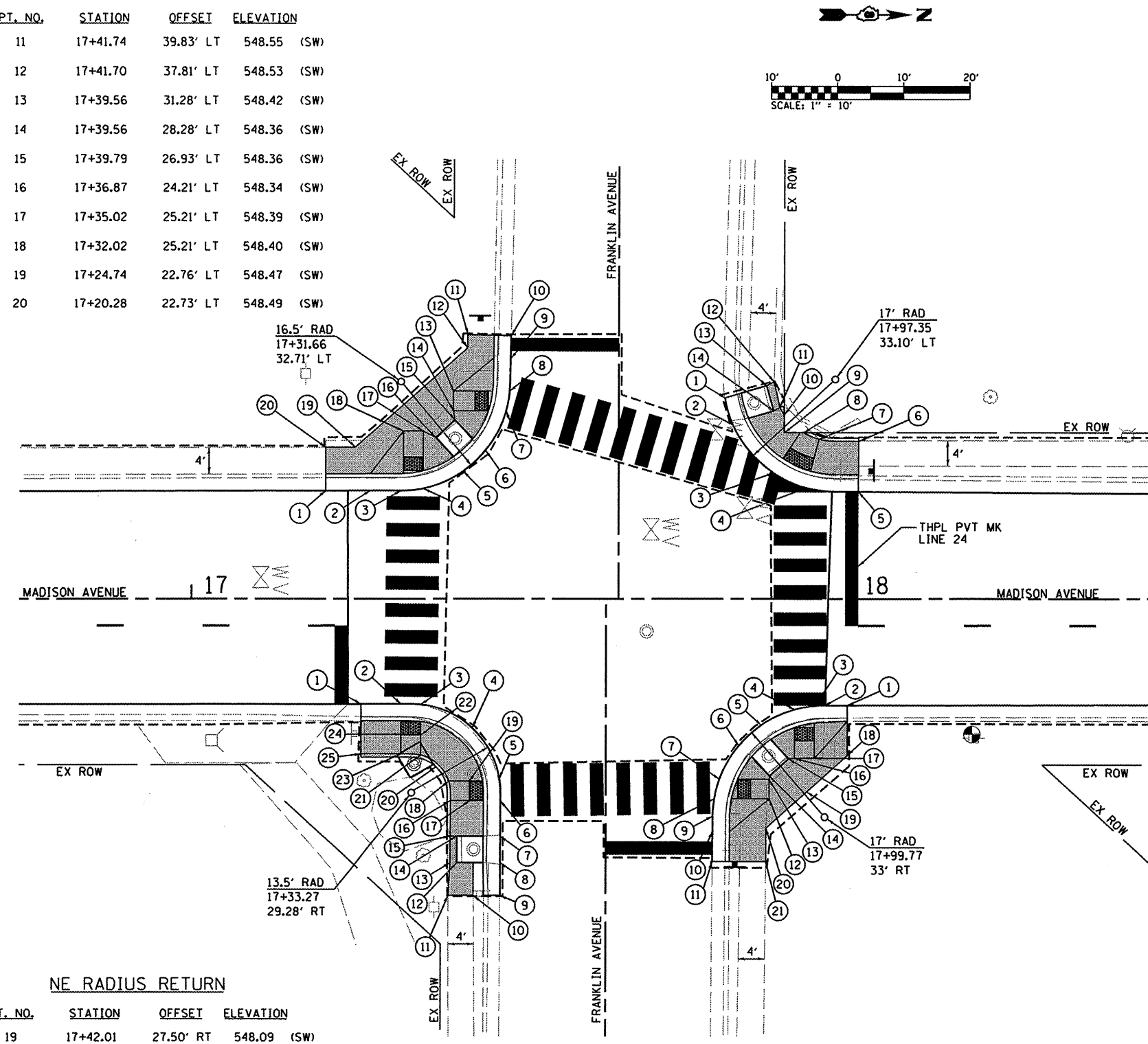
PT. NO.	STATION	OFFSET	ELEVATION
1	17+80.58	30.27' LT	547.85 (EOP)
	17+83.08	31.00' LT	548.23 (BC)
2	17+81.80	26.22' LT	547.80 (EOP)
	17+84.16	27.26' LT	548.18 (BC)
3	17+88.02	18.89' LT	547.85 (EOP)
	17+89.43	21.05' LT	547.77 (BC)
	17+89.43	21.05' LT	547.77 (SW)
4	17+92.95	16.67' LT	547.93 (EOP)
	17+93.62	19.17' LT	547.85 (BC)
	17+93.62	19.17' LT	547.85 (SW)
5	18+00.85	16.07' LT	548.04 (EOP)
	18+00.85	18.65' LT	548.42 (BC)
6	18+00.88	23.65' LT	548.55 (SW)
			548.55 (TC)
7	17+94.91	23.98' LT	547.95 (SW)
			548.45 (TC)
8	17+92.54	25.00' LT	547.91 (SW)
			548.40 (TC)
9	17+89.61	25.00' LT	548.02 (SW)
10	17+89.61	27.72' LT	548.14 (SW)
11	17+88.94	28.87' LT	548.28 (SW)
			548.28 (TC)
12	17+88.05	32.69' LT	548.29 (SW)
13	17+86.48	31.96' LT	548.27 (SW)
14	17+87.49	28.14' LT	548.26 (SW)

NE RADIUS RETURN

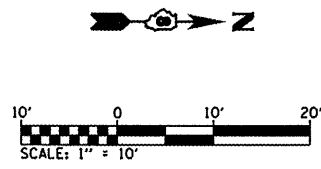
PT. NO.	STATION	OFFSET	ELEVATION
1	17+25.67	15.78' RT	548.08 (EOP)
	17+25.67	18.36' RT	548.51 (BC)
2	17+31.67	15.78' RT	548.05 (EOP)
	17+31.67	18.36' RT	547.97 (BC)
	17+31.67	18.36' RT	547.97 (SW)
3	17+34.67	15.85' RT	548.04 (EOP)
	17+34.67	18.45' RT	547.98 (BC)
	17+34.67	18.45' RT	547.98 (SW)
4	17+42.47	19.40' RT	548.03 (EOP)
	17+40.71	21.28' RT	548.30 (BC)
5	17+46.57	27.09' RT	548.00 (EOP)
	17+44.04	27.51' RT	547.92 (BC)
	17+44.04	27.51' RT	547.92 (SW)
6	17+46.46	30.52' RT	547.99 (EOP)
	17+44.18	30.52' RT	547.91 (BC)
	17+44.18	30.52' RT	547.91 (SW)
7	17+46.73	35.94' RT	547.96 (EOP)
	17+44.19	35.94' RT	548.34 (BC)
8	17+46.71	39.94' RT	547.96 (EOP)
	17+44.13	39.94' RT	548.34 (BC)
9	17+46.68	44.98' RT	547.98 (EOP)
	17+44.22	44.98' RT	548.36 (BC)
10	17+42.66	44.98' RT	548.38 (SW)
11	17+38.82	44.98' RT	548.53 (SW)
12	17+40.13	39.94' RT	548.40 (SW)
13	17+39.13	39.94' RT	548.42 (SW)
14	17+40.13	35.94' RT	548.42 (SW)
15	17+39.15	35.94' RT	548.43 (SW)
			548.43 (TC)
16	17+39.18	30.50' RT	548.14 (SW)
			548.48 (TC)
17	17+42.18	30.50' RT	548.08 (SW)
18	17+38.92	27.50' RT	548.15 (SW)
			548.51 (TC)

NE RADIUS RETURN

PT. NO.	STATION	OFFSET	ELEVATION
19	17+42.01	27.50' RT	548.09 (SW)
20	17+36.96	25.31' RT	548.39 (SW)
			548.52 (TC)
21	17+34.68	23.53' RT	548.21 (SW)
			548.54 (TC)
22	17+34.68	20.47' RT	548.15 (SW)
23	17+31.68	23.36' RT	548.20 (SW)
			548.55 (TC)
24	17+31.68	20.36' RT	548.14 (SW)
25	17+25.68	23.36' RT	548.56 (SW)
			548.56 (TC)



INTERSECTION LAYOUT
MADISON AVENUE AND FRANKLIN AVENUE
SCALE: 1"=10'



LEGEND

- EOP = EDGE OF PAVEMENT
- BC = BACK OF CURB
- SW = SIDEWALK
- TC = TOP OF CURB
- PROP. PCC SIDEWALK, 4"

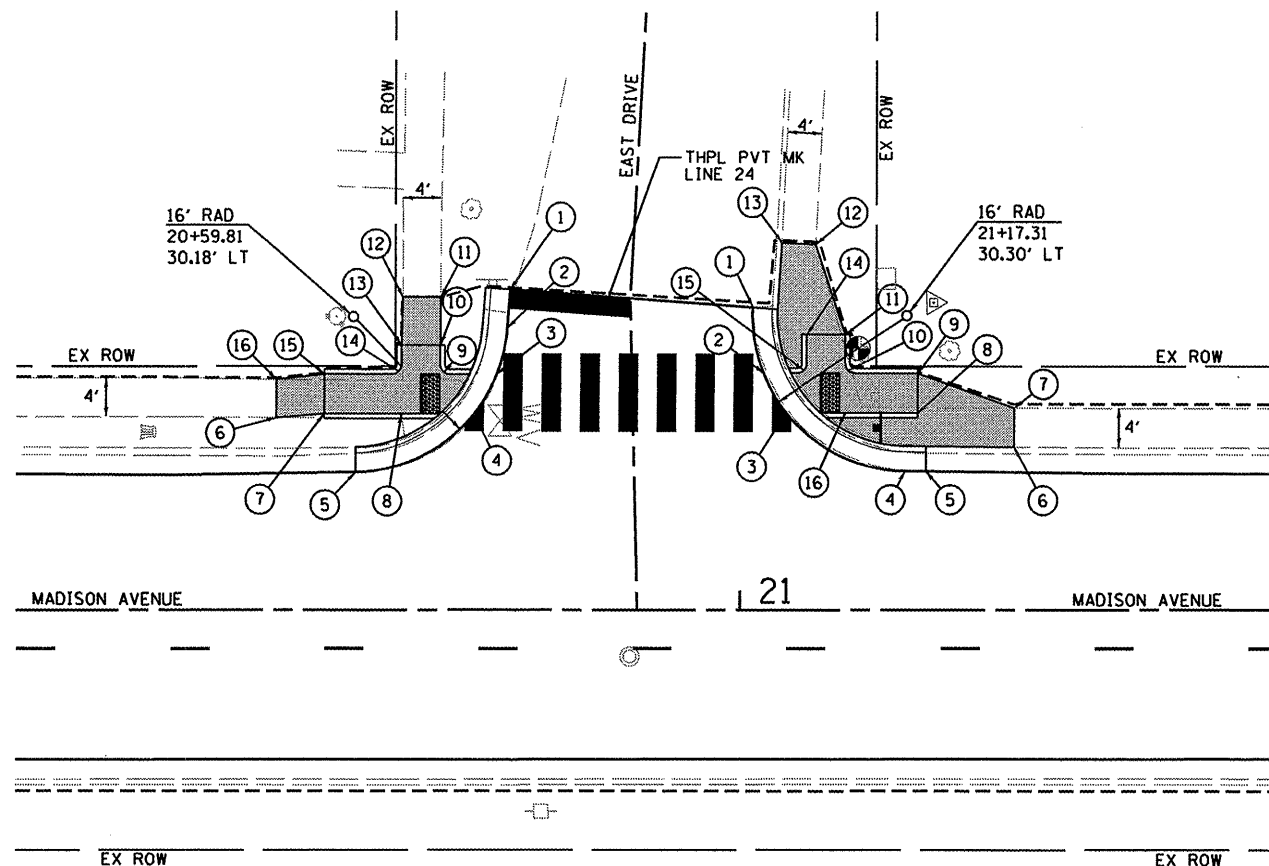
SW RADIUS RETURN

PT. NO.	STATION	OFFSET	ELEVATION
1	20+76.07	33.02' LT	549.17 (EOP)
	20+73.50	33.22' LT	549.55 (BC)
2	20+75.77	29.00' LT	549.30 (EOP)
	20+73.20	29.20' LT	549.68 (BC)
3	20+74.64	24.17' LT	549.45 (EOP)
	20+71.82	24.17' LT	549.83 (BC)
	20+71.82	24.17' LT	549.37 (SW)
4	20+72.30	20.17' LT	549.61 (EOP)
	20+68.76	20.17' LT	549.99 (BC)
	20+68.76	20.17' LT	549.53 (SW)
5	20+60.06	14.18' LT	550.03 (EOP)
	20+60.02	16.76' LT	550.24 (BC)
6	20+51.76	19.80' LT	549.67 (SW)
7	20+56.77	20.20' LT	549.65 (SW)
			549.65 (TC)
8	20+64.79	20.19' LT	549.59 (SW)
			549.80 (TC)
9	20+69.19	24.39' LT	549.43 (SW)
			549.66 (TC)
10	20+68.80	27.18' LT	549.49 (SW)
			549.49 (TC)
11	20+68.83	32.18' LT	549.43 (SW)
12	20+64.93	32.18' LT	549.44 (SW)
13	20+64.80	27.18' LT	549.57 (SW)
			549.57 (TC)
14	20+64.50	24.48' LT	549.51 (SW)
			549.60 (TC)
15	20+56.79	24.20' LT	549.66 (SW)
			549.66 (TC)
16	20+51.78	23.65' LT	549.76 (SW)

NOTE: PROPOSED CURB GRADES LOWERED TO FACILATE DRAINAGE. CONSTRUCT PAVEMENT PATCH, 8" TO MATCH PROPOSED CURB GRADES.

NW RADIUS RETURN

PT. NO.	STATION	OFFSET	ELEVATION
1	21+01.33	31.16' LT	549.29 (EOP)
	21+03.90	30.97' LT	549.72 (BC)
2	21+02.47	24.31' LT	549.56 (EOP)
	21+05.30	24.31' LT	549.48 (BC)
	21+05.30	24.31' LT	549.94 (SW)
3	21+04.84	20.31' LT	549.72 (EOP)
	21+08.35	20.31' LT	549.64 (BC)
	21+08.35	20.31' LT	550.10 (SW)
4	21+17.11	14.30' LT	549.89 (EOP)
	21+17.15	16.88' LT	550.23 (BC)
5	21+19.28	14.28' LT	549.88 (EOP)
	21+19.28	16.88' LT	550.22 (BC)
6	21+28.42	16.79' LT	550.15 (SW)
7	21+28.43	20.81' LT	550.22 (SW)
8	21+18.43	20.29' LT	550.29 (SW)
			550.29 (TC)
9	21+18.43	24.29' LT	550.37 (SW)
			550.37 (TC)
10	21+11.23	24.59' LT	549.60 (SW)
			549.81 (TC)
11	21+10.95	28.30' LT	549.94 (SW)
			549.94 (TC)
12	21+07.86	37.66' LT	549.56 (SW)
13	21+04.35	37.84' LT	549.45 (SW)
14	21+06.95	28.31' LT	549.86 (SW)
			549.86 (TC)
15	21+06.65	24.60' LT	549.52 (SW)
			549.91 (TC)
16	21+10.93	20.30' LT	549.68 (SW)
			550.15 (TC)



INTERSECTION LAYOUT
MADISON AVENUE AND EAST DRIVE
SCALE: 1"=10'

LEGEND

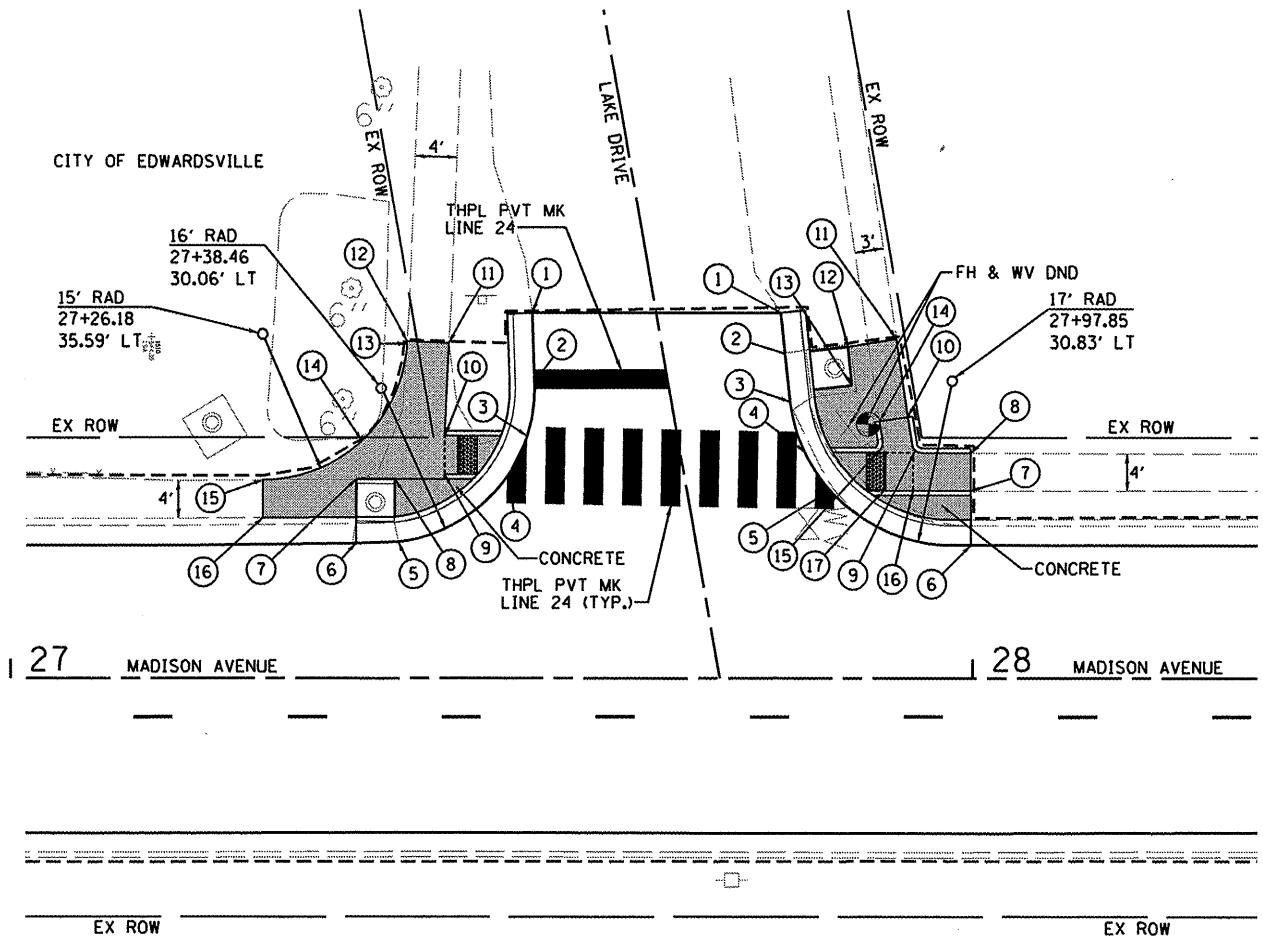
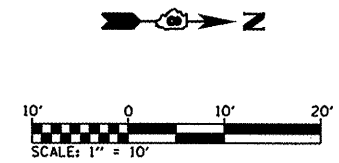
EOP = EDGE OF PAVEMENT
BC = BACK OF CURB
SW = SIDEWALK
TC = TOP OF CURB
PROP. PCC SIDEWALK, 4"

SW RADIUS RETURN

PT. NO.	STATION	OFFSET	ELEVATION
1	27+54.20	37.72' LT	544.13 (EOP)
	27+51.63	37.63' LT	544.51 (BC)
2	27+54.45	30.63' LT	544.00 (EOP)
	27+51.88	30.54' LT	544.38 (BC)
3	27+53.69	25.17' LT	543.83 (EOP)
	27+50.96	25.17' LT	544.21 (BC)
	27+50.96	25.17' LT	543.75 (SW)
4	27+51.82	21.17' LT	543.71 (EOP)
	27+48.51	21.17' LT	544.09 (BC)
	27+48.51	21.17' LT	543.63 (SW)
5	27+40.25	14.16' LT	543.57 (EOP)
	27+40.25	16.72' LT	543.85 (BC)
6	27+35.90	14.09' LT	543.62 (EOP)
	27+35.89	16.67' LT	543.95 (BC)
7	27+35.89	20.67' LT	544.03 (SW)
8	27+39.89	20.67' LT	543.93 (SW)
9	27+45.11	21.17' LT	543.83 (SW)
			543.83 (TC)
10	27+45.11	25.17' LT	543.91 (SW)
			543.91 (TC)
11	27+45.52	34.70' LT	544.25 (SW)
12	27+41.16	34.87' LT	544.18 (SW)
13	27+41.15	34.61' LT	544.16 (SW)
14	27+36.45	24.66' LT	544.11 (SW)
15	27+26.23	20.59' LT	544.06 (SW)
16	27+26.23	16.62' LT	543.94 (SW)

NW RADIUS RETURN

PT. NO.	STATION	OFFSET	ELEVATION
1	27+80.00	37.74' LT	543.96 (EOP)
	27+82.56	38.01' LT	544.34 (BC)
2	27+80.43	33.65' LT	543.95 (EOP)
	27+83.00	33.92' LT	544.33 (BC)
3	27+80.99	28.69' LT	543.95 (EOP)
	27+83.49	29.31' LT	544.33 (BC)
4	27+82.51	23.50' LT	543.99 (EOP)
	27+85.44	23.50' LT	544.37 (BC)
	27+85.44	23.50' LT	543.91 (SW)
5	27+85.16	19.50' LT	544.02 (EOP)
	27+88.93	19.50' LT	544.40 (BC)
	27+88.93	19.50' LT	543.94 (SW)
6	27+99.79	13.83' LT	544.13 (EOP)
	27+99.79	16.41' LT	544.47 (BC)
7	27+99.77	19.44' LT	544.63 (SW)
			544.63 (TC)
8	27+99.77	23.38' LT	544.72 (SW)
			544.72 (TC)
9	27+94.00	23.67' LT	544.24 (SW)
			544.24 (TC)
10	27+93.31	27.14' LT	544.54 (SW)
			544.54 (TC)
11	27+92.03	35.10' LT	544.58 (SW)
12	27+86.97	34.35' LT	544.48 (SW)
13	27+87.40	30.37' LT	544.46 (SW)
14	27+90.28	26.70' LT	544.39 (SW)
			544.39 (TC)
15	27+90.34	23.80' LT	544.16 (SW)
			544.39 (TC)
16	27+90.75	19.48' LT	544.08 (SW)
			544.42 (TC)
17	27+93.77	19.48' LT	544.16 (SW)
			544.50 (TC)

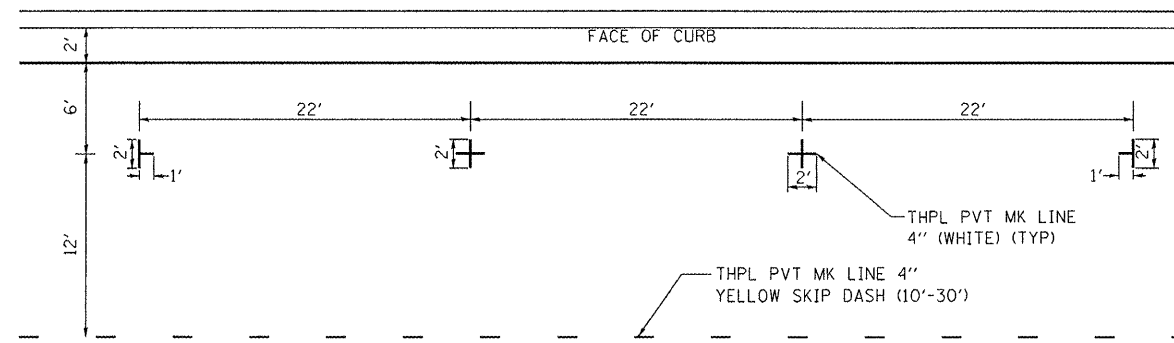


INTERSECTION LAYOUT
MADISON AVENUE AND LAKE DRIVE
SCALE: 1"=10'

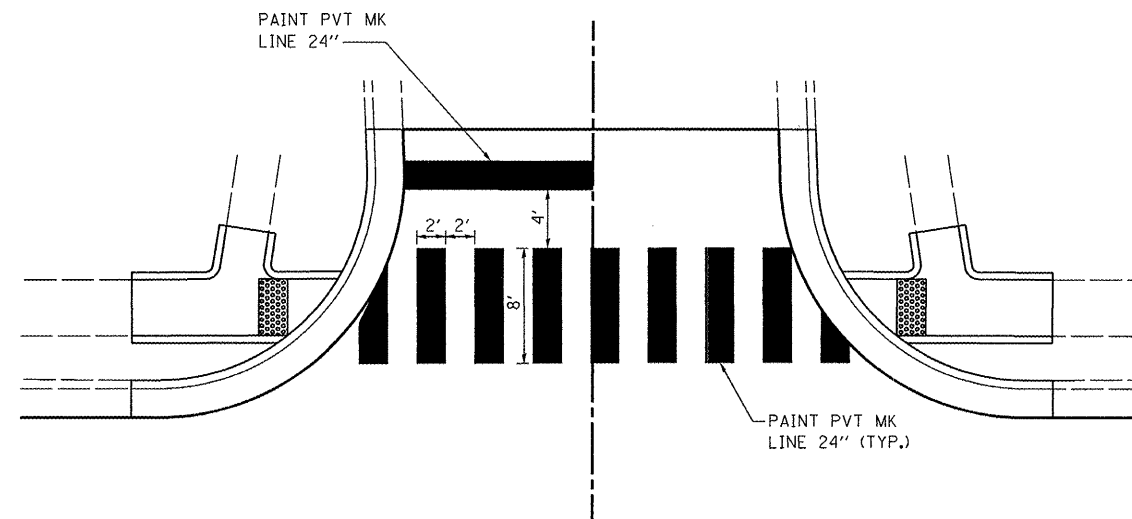
LEGEND

- EOP = EDGE OF PAVEMENT
- BC = BACK OF CURB
- SW = SIDEWALK
- TC = TOP OF CURB
- PROP. PCC SIDEWALK, 4"

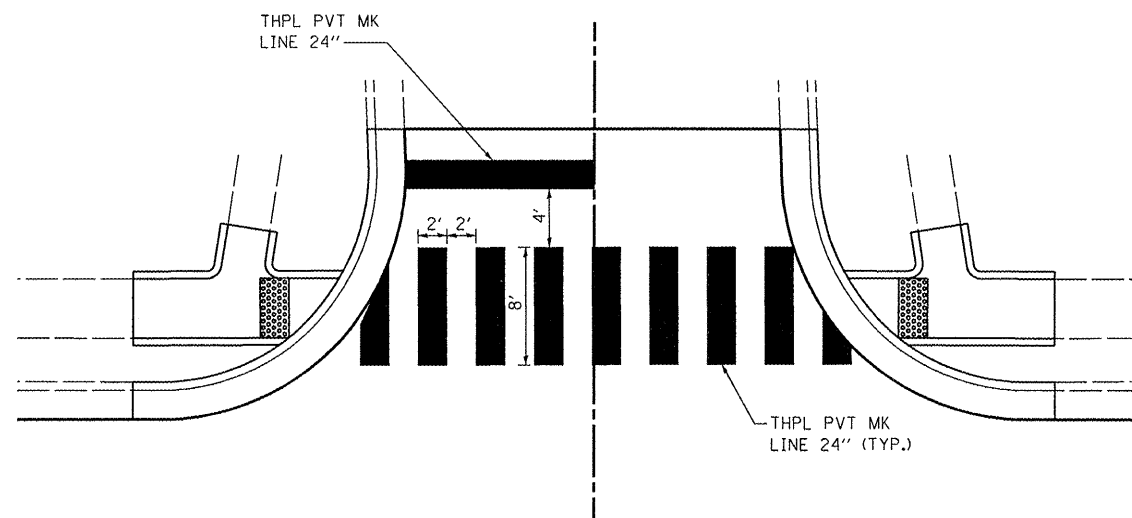
FILE NAME = H:\P\29012\Microstation\08-29012\intdet.dgn	USER NAME = travis	DESIGNED - PAM	REVISED -	STATE OF ILLINOIS DEPARTMENT OF TRANSPORTATION	INTERSECTION DETAIL SHEETS	F.A.U. RTE. 8892	SECTION 09-00099-00-RS	COUNTY MADISON	TOTAL SHEETS 14	SHEET NO. 13	
PLOT SCALE = 20.0000' / IN.	CHECKED -	REVISED -	SCALE: 1"=20'			SHEET NO. 3 OF 4 SHEETS	MADISON AVENUE RESURFACING	CONTRACT NO. 97413		ILLINOIS FED. AID PROJECT	
PLOT DATE = 11/5/2009	DATE -	REVISED -									



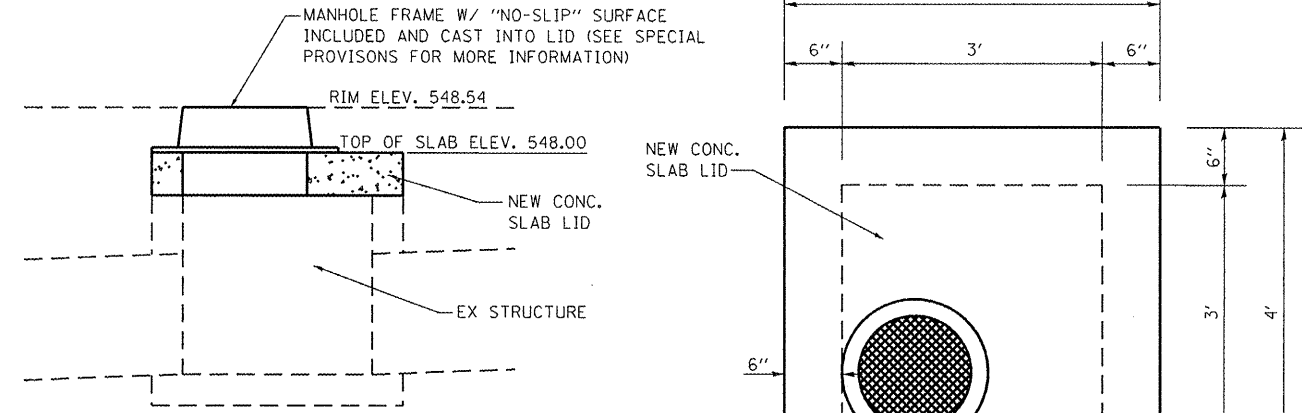
PARKING LANE STRIPING DETAILS
(NOT TO SCALE)



CROSSWALK STRIPING DETAILS ON CONCRETE PAVEMENT
(NOT TO SCALE)



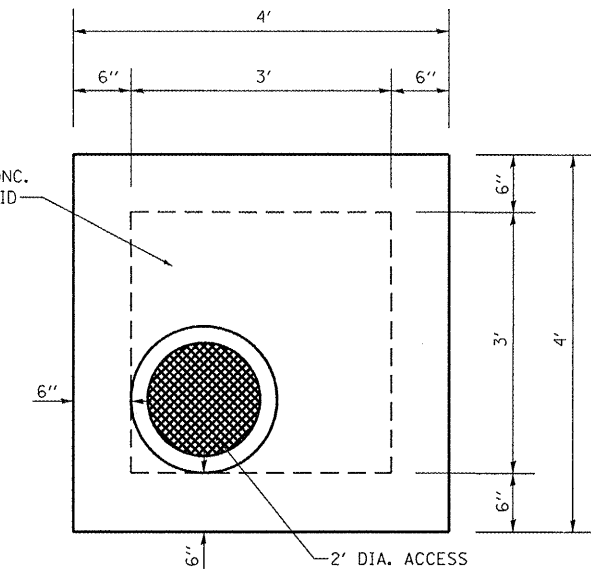
CROSSWALK STRIPING DETAILS ON ASPHALT PAVEMENT
(NOT TO SCALE)



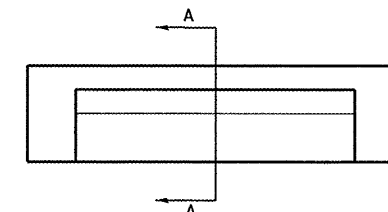
SECTION

MANHOLE ADJUSTMENT DETAIL

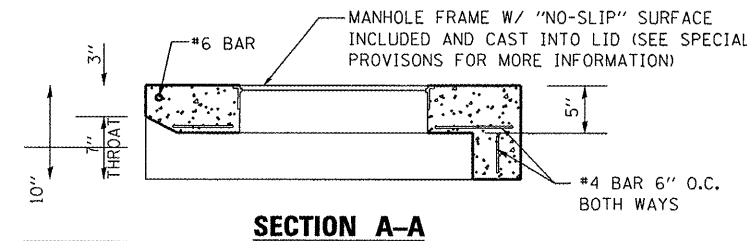
STA. 17+34, 24.24' RT
(NOT TO SCALE)



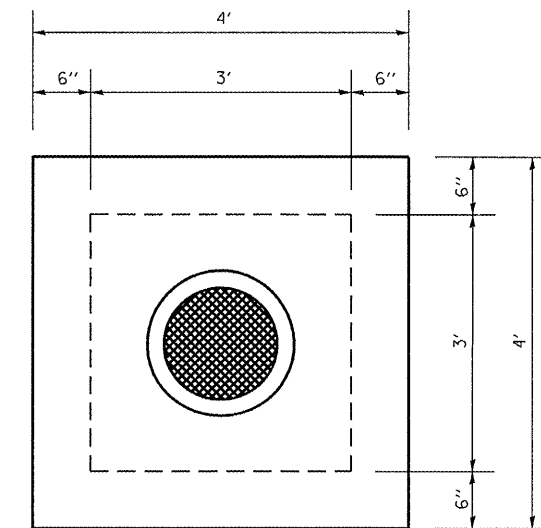
PLAN



ELEVATION



SECTION A-A

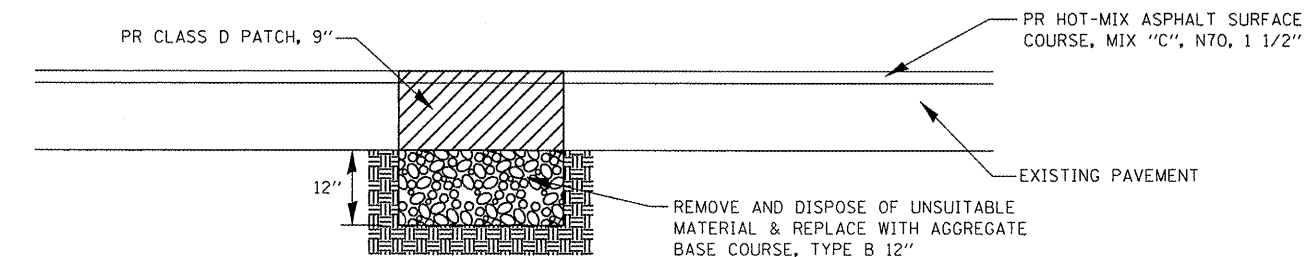


PLAN

INLET LID (SPECIAL)

(NOT TO SCALE)

NOTE: MODIFY THROAT DEPTH TO MATCH EXISTING FIELD CONDITIONS AS REQUIRED



REPAIR UNSTABLE SUBBASE DETAIL

(NOT TO SCALE)

FILE NAME =	USER NAME = travis	DESIGNED -	REVISED -
H:\NP\29012\Microstation\08-29012\details.dgn		DRAWN -	REVISED -
	PLOT SCALE = 40.0000' / 1\"/>		
	PLOT DATE = 11/6/2009	CHECKED -	REVISED -
		DATE -	REVISED -

STATE OF ILLINOIS
DEPARTMENT OF TRANSPORTATION

CONSTRUCTION DETAILS

SCALE: NONE SHEET NO. 1 OF 1 SHEETS

F.A.U. RTE.	SECTION	COUNTY	TOTAL SHEETS	SHEET NO.
8892	09-00099-00-RS	MADISON	14	14
MADISON AVENUE RESURFACING		CONTRACT NO. 97413		
ILLINOIS FED. AID PROJECT				