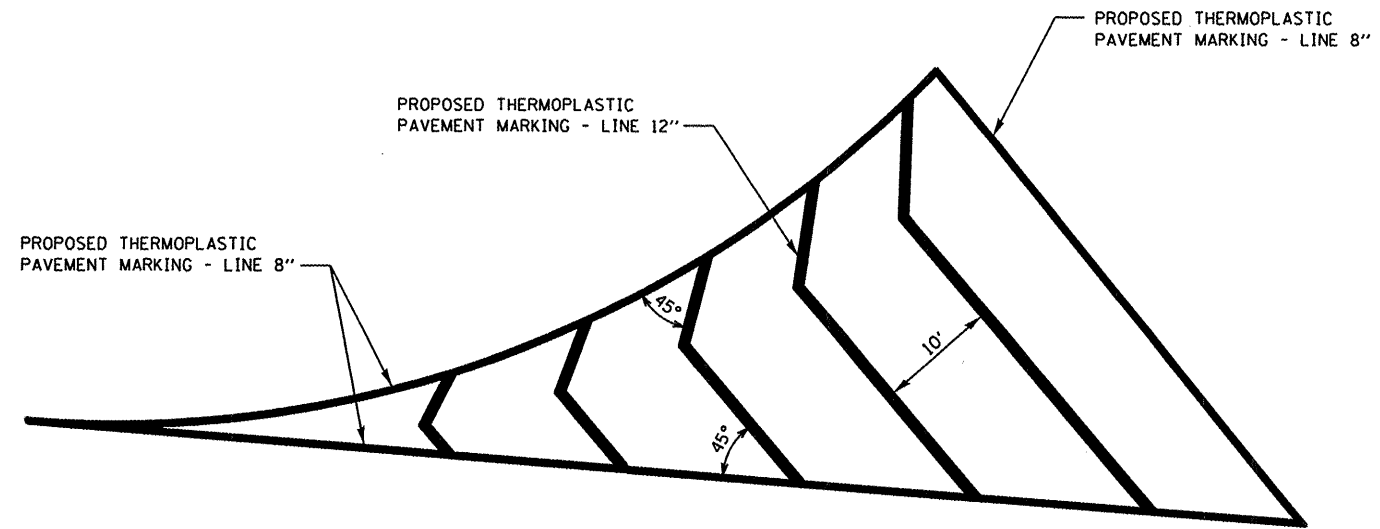
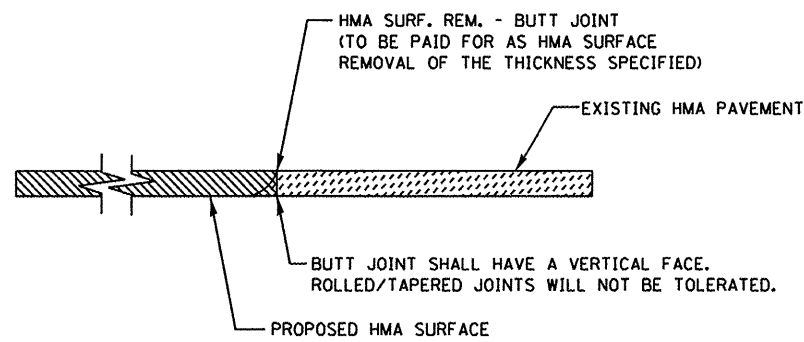


**HMA SURFACE REMOVAL TRANSITION**

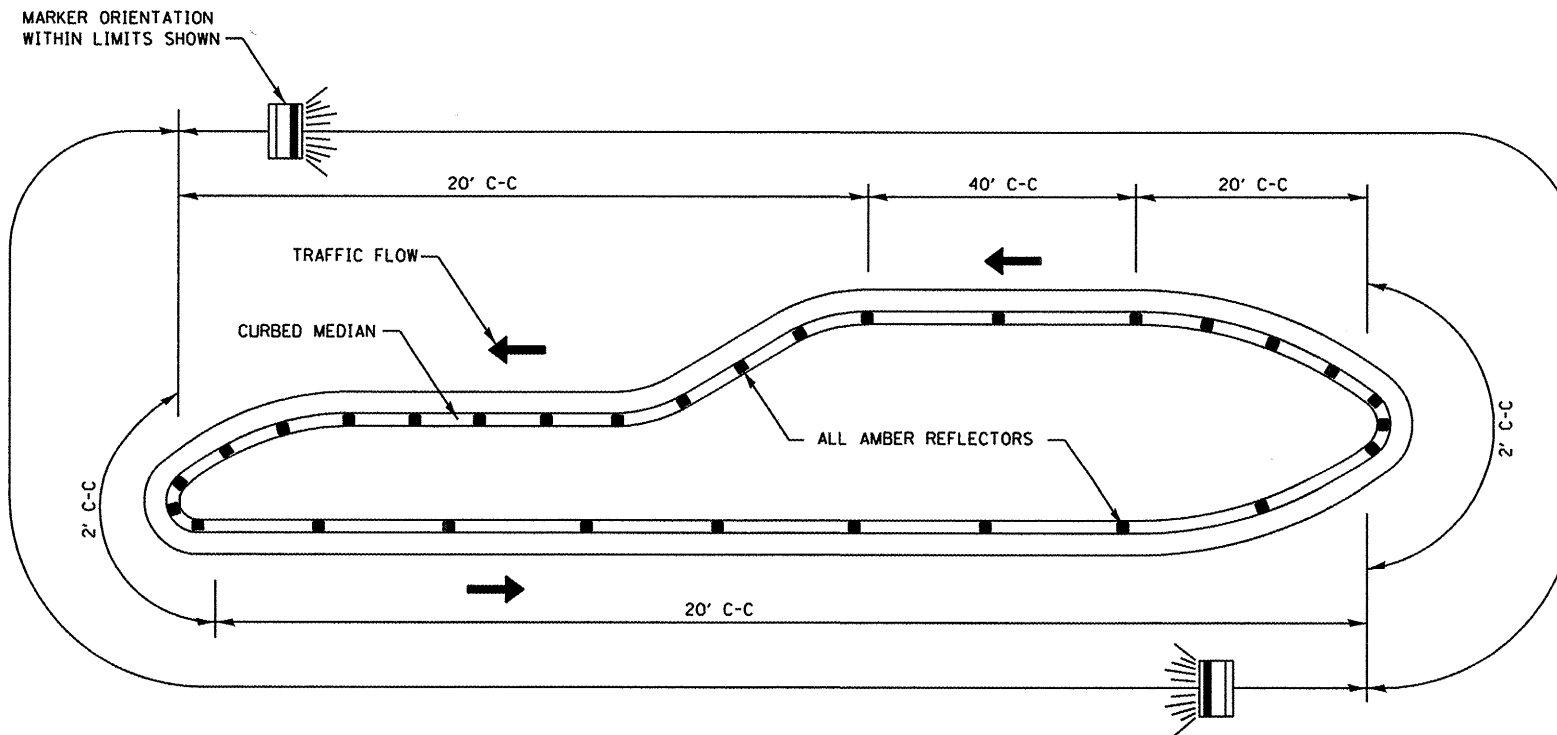


**PAVEMENT STRIPING DETAIL**  
STA. 27+91 TO STA. 29+01

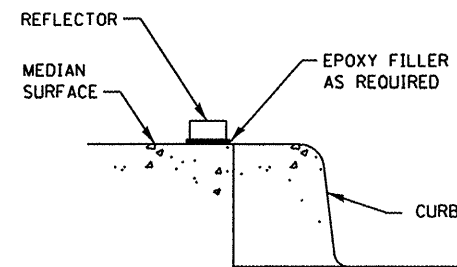


**HMA BUTT JOINT**

STA. 11+40  
SOUTHPORT DRIVE  
IL 3 SB OFF RAMP  
IL 3 SB ON RAMP  
IL 3 NB OFF RAMP  
IL 3 NB ON RAMP  
STA. 29+70 (WB)  
STA. 29+83 (EB)



**TYPICAL PLACEMENT OF PRISMATIC REFLECTORS ON CURBS**  
NOT TO SCALE



**SECTION VIEW**

**NOTES**

1. PRISMATIC REFLECTORS SHALL BE MONO-DIRECTIONAL AND POSITIONED SO THAT THE REFLECTIVE FACE IS FACING THE APPROACHING TRAFFIC.
2. PRISMATIC REFLECTORS SHALL BE SECURED IN PLACE WITH AN EPOXY ADHESIVE.
3. PRISMATIC REFLECTORS SHALL BE AMBER IN COLOR.

FILE NAME = H:\P\29017\Microstation\Copied from M	USER NAME = default current files\29017 cv01.dgn	DESIGNED - DRAWN -	REVISED - REVISED -	<b>STATE OF ILLINOIS DEPARTMENT OF TRANSPORTATION</b>	<b>MISCELLANEOUS DETAILS</b>			F.A.I. RTE. 9300	SECTION 09-00048-00-RS	COUNTY MONROE	TOTAL SHEETS 7	SHEET NO. 7
	PLOT SCALE = 40.0000' / IN.	CHECKED -	REVISED -					SCALE:	SHEET NO.	OF SHEETS	STA.	TO STA.
	PLOT DATE = 11/2/2009	DATE -	REVISED -		ILLINOIS							