

LEGEND

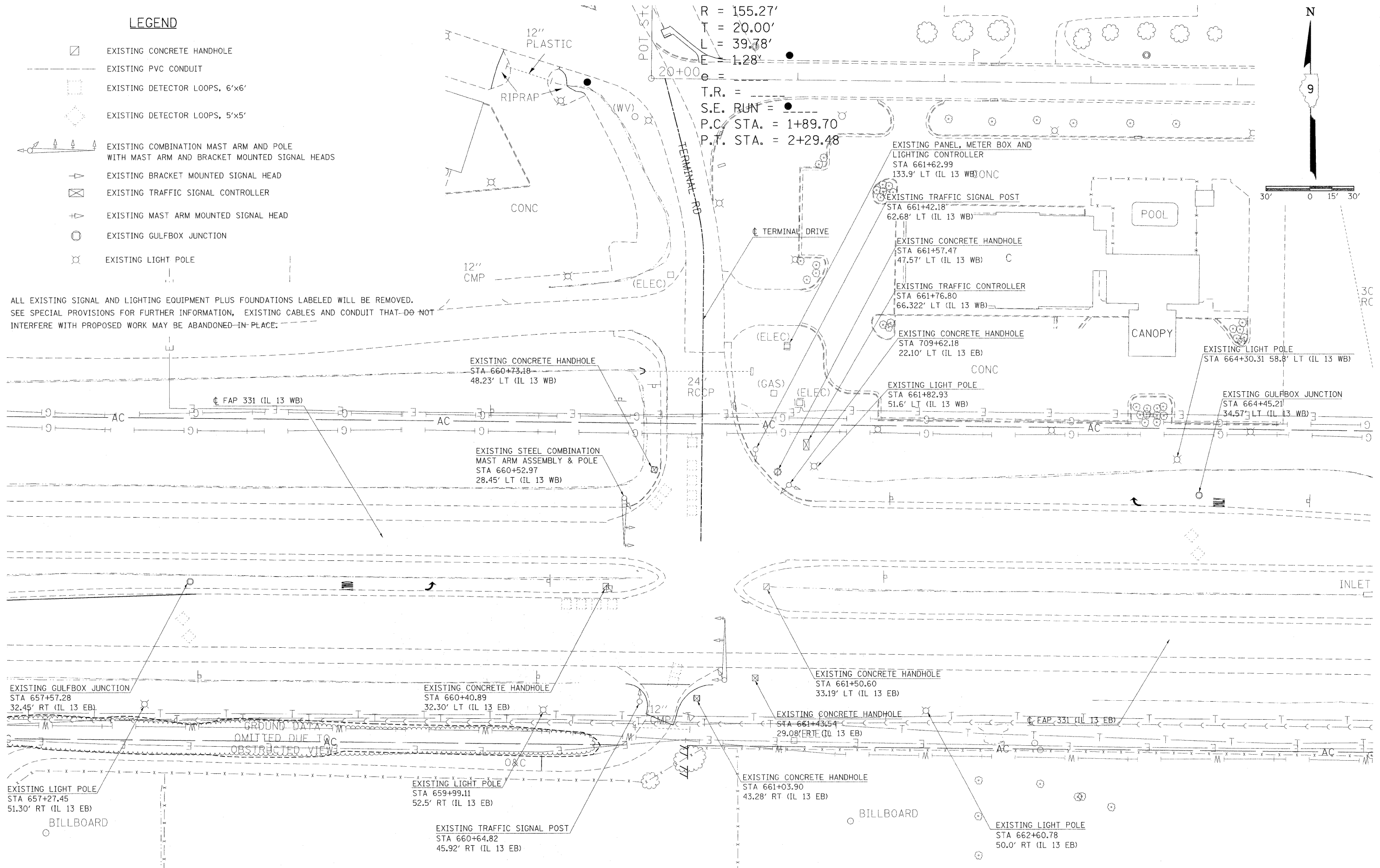
- EXISTING CONCRETE HANDHOLE
- EXISTING PVC CONDUIT
- EXISTING DETECTOR LOOPS, 6'x6'
- EXISTING DETECTOR LOOPS, 5'x5'
- EXISTING COMBINATION MAST ARM AND POLE WITH MAST ARM AND BRACKET MOUNTED SIGNAL HEADS
- EXISTING BRACKET MOUNTED SIGNAL HEAD
- EXISTING TRAFFIC SIGNAL CONTROLLER
- EXISTING MAST ARM MOUNTED SIGNAL HEAD
- EXISTING GULFBOX JUNCTION
- EXISTING LIGHT POLE

ALL EXISTING SIGNAL AND LIGHTING EQUIPMENT PLUS FOUNDATIONS LABELED WILL BE REMOVED. SEE SPECIAL PROVISIONS FOR FURTHER INFORMATION. EXISTING CABLES AND CONDUIT THAT DO NOT INTERFERE WITH PROPOSED WORK MAY BE ABANDONED IN PLACE.

R = 155.27'
 T = 20.00'
 L = 39.78'
 E = 1.28'
 T.R. =
 S.E. RUN =
 P.C. STA. = 1+89.70
 P.T. STA. = 2+29.48



30' 0 15' 30'



FILE NAME =	USER NAME = shepardgd	DESIGNED -	REVISED -	STATE OF ILLINOIS DEPARTMENT OF TRANSPORTATION	EXISTING TRAFFIC SIGNAL & LIGHTING ILLINOIS 13 AND TERMINAL DRIVE	F.A.P. RTE. 331	SECTION (1-2)N-2,R(1X-1)N-3,R-2	COUNTY WILLIAMSON	TOTAL SHEETS 202	SHEET NO. 79	
CONTRACT NO. 98857	CONTRACT NO. 98857	CONTRACT NO. 98857	CONTRACT NO. 98857			CONTRACT NO. 98857	CONTRACT NO. 98857	CONTRACT NO. 98857	CONTRACT NO. 98857	CONTRACT NO. 98857	CONTRACT NO. 98857
SCALE: 1"=30'	SHEET NO.	OF SHEETS	STA.			TO STA.	ILLINOIS FED. AID PROJECT				
PLOT DATE = 10/14/2009	DATE	DATE	DATE			DATE					