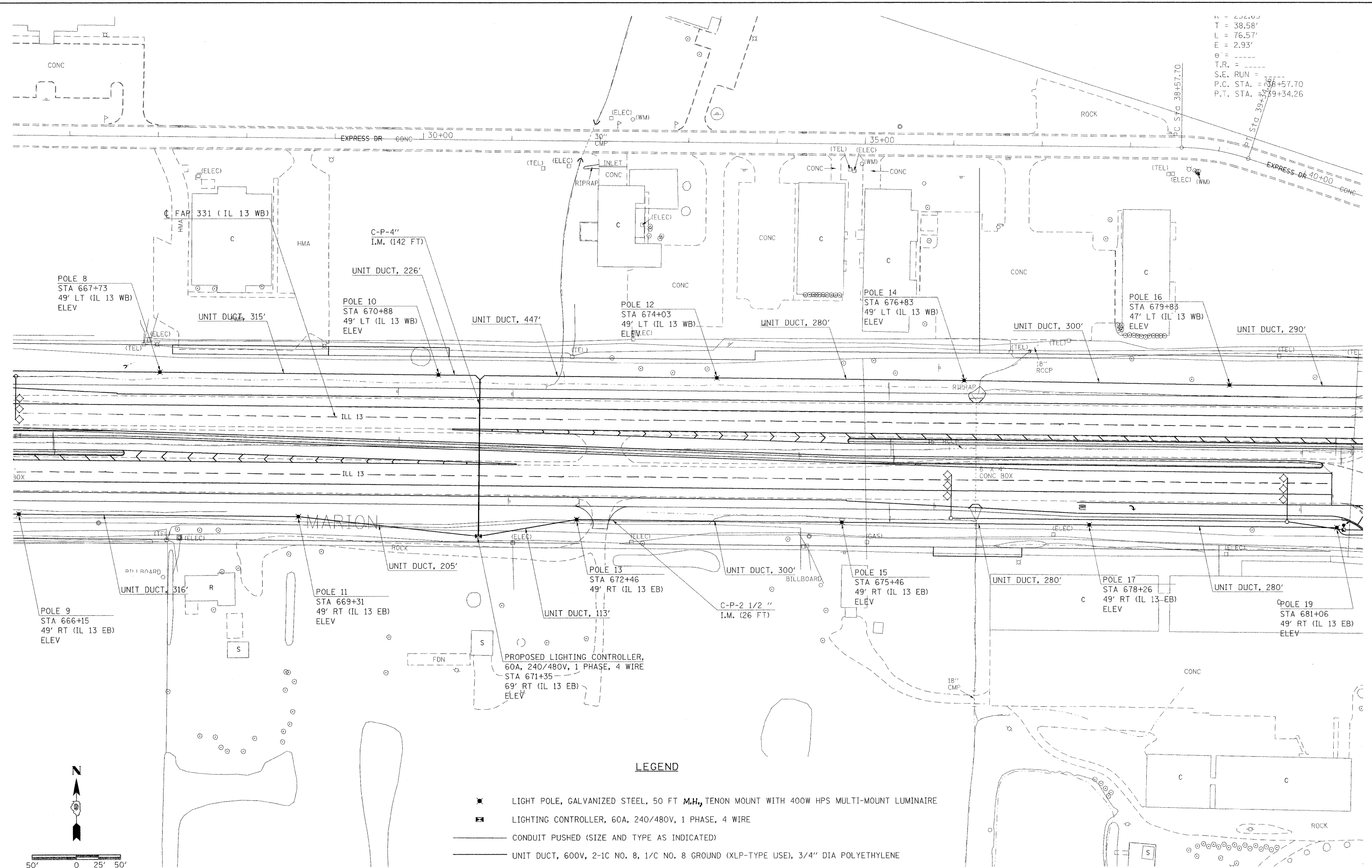
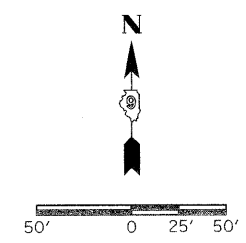


n = 2.26.00
 T = 38.58'
 L = 76.57'
 E = 2.93'
 e = ----
 T.R. = ----
 S.E. RUN = ----
 P.C. STA. = 38+57.70
 P.T. STA. = 39+34.26



LEGEND

- ✱ LIGHT POLE, GALVANIZED STEEL, 50 FT M.H., TENON MOUNT WITH 400W HPS MULTI-MOUNT LUMINAIRE
- ⊞ LIGHTING CONTROLLER, 60A, 240/480V, 1 PHASE, 4 WIRE
- CONDUIT PUSHED (SIZE AND TYPE AS INDICATED)
- UNIT DUCT, 600V, 2-1C NO. 8, 1/C NO. 8 GROUND (XLP-TYPE USE), 3/4" DIA POLYETHYLENE



FILE NAME =	USER NAME = shepardgd	DESIGNED -	REVISED -	STATE OF ILLINOIS DEPARTMENT OF TRANSPORTATION	PROPOSED HIGHWAY LIGHTING ILLINOIS 13 BETWEEN PENTECOST ROAD AND TERMINAL DRIVE			F.A.P. RTE. 331	SECTION (1-2)N-2,R;(1X-1)N-3,R-2	COUNTY WILLIAMSON	TOTAL SHEETS 202	SHEET NO. 88
ct:\pwwork\pwwid001\shepardgd\des47330\F	dstmi3-sht-light.dgn	DRAWN -	REVISED -		SCALE: 1"=50'	SHEET NO.	OF	SHEETS	STA. 667+00.00	TO STA. 681+00.00	CONTRACT NO. 98857	
	PLOT SCALE = 50.0000' / IN.	CHECKED -	REVISED -								ILLINOIS FED. AID PROJECT	
	PLOT DATE = 10/14/2009	DATE -	REVISED -									