

STATE OF ILLINOIS
DEPARTMENT OF TRANSPORTATION
PLANS FOR PROPOSED
HIGHWAY BRIDGE PROGRAM

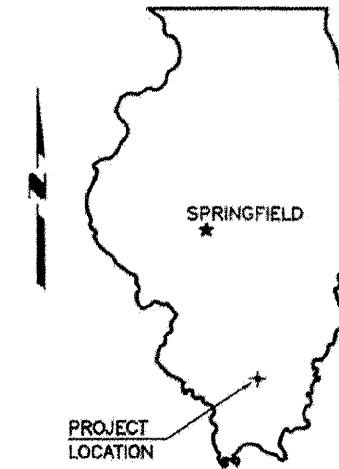
TOWNSHIP ROUTE 320 (FRISCO ROAD)
NORTHERN TOWNSHIP

SECTION 06-10125-00-BR
PROJECT NO. BROS-055(52)

JOB NO. C-99-521-07
TAYLOR BRANCH

FRANKLIN COUNTY

ROUTE	SECTION	COUNTY	TOTAL SHEETS	SHEET NO.
TR 320	06-10125-00-BR	FRANKLIN	14	1
PROJECT NO. BROS-055(52)			CONTRACT NO. 99308	



SUMMARY OF QUANTITIES

CODE NO.	PAY ITEM	UNIT	TOTAL
20200100	EARTH EXCAVATION	CU YD	1,105
20300100	CHANNEL EXCAVATION	CU YD	429
20400100	BORROW EXCAVATION	CU YD	761
25000200	SEEDING, CLASS 2	ACRE	1.1
25000400	NITROGEN FERTILIZER NUTRIENT	POUND	99
25000500	PHOSPHORUS FERTILIZER NUTRIENT	POUND	99
25000600	POTASSIUM FERTILIZER NUTRIENT	POUND	99
25000700	AGRICULTURAL GROUND LIMESTONE	TON	2.2
* 25100120	MULCH, METHOD 2	TON	2.2
28000250	TEMPORARY EROSION CONTROL SEEDING	POUND	110
28000305	TEMPORARY DITCH CHECKS	FOOT	80
28000500	INLET AND PIPE PROTECTION	EACH	2
28100807	STONE DUMPED RIPRAP, CLASS A4	TON	475
40200800	AGGREGATE SURFACE COURSE, TYPE B	TON	745
50100100	REMOVAL OF EXISTING STRUCTURES	EACH	1
50105220	PIPE CULVERT REMOVAL	FOOT	54
50200100	STRUCTURE EXCAVATION	CU YD	24
50300225	CONCRETE STRUCTURES	CU YD	18.8
50300280	CONCRETE ENCASEMENT	CU YD	2.1
50400505	PRECAST PRESTRESSED CONCRETE DECK BEAMS (27" DEPTH)	SQ FT	1,498
50800105	REINFORCEMENT BARS	POUND	2,438
Δ 50900205	STEEL RAILING, TYPE S1	FOOT	125
51201400	FURNISHING STEEL PILES HP10X42	FOOT	182
51202305	DRIVING PILES	FOOT	182
51203400	TEST PILE STEEL HP10X42	EACH	1
51500100	NAME PLATES	EACH	1
54200223	PIPE CULVERTS, CLASS D, TYPE 1 18"	FOOT	44
54200229	PIPE CULVERTS, CLASS D, TYPE 1 24"	FOOT	38
59300100	CONTROLLED LOW-STRENGTH MATERIAL	CU YD	16
Δ 63000002	STEEL PLATE BEAM GUARD RAIL, TYPE A 6.75 FOOT POSTS	FOOT	75
Δ 63100075	TRAFFIC BARRIER TERMINAL, TYPE 5A	EACH	2
*Δ 63100167	TRAFFIC BARRIER TERMINAL, TYPE 1, (SPECIAL) TANGENT	EACH	2
67100100	MOBILIZATION	L SUM	1
*Δ 78201000	TERMINAL MARKER - DIRECT APPLIED	EACH	4

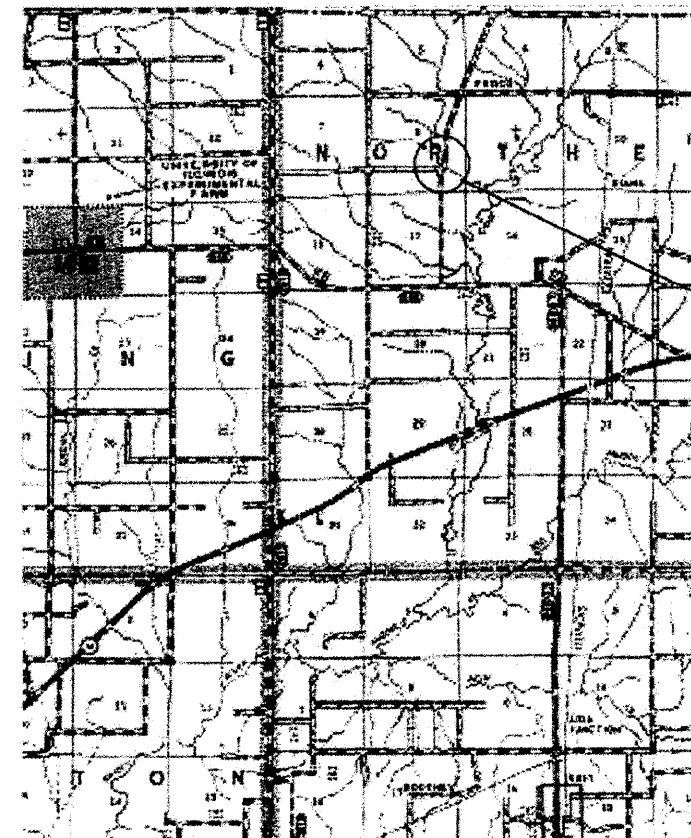
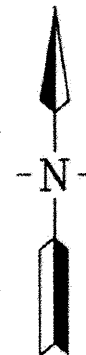
* SEE SPECIAL PROVISIONS Δ SPECIALITY ITEMS

JOINT UTILITY LOCATION INFORMATION FOR EXCAVATION
J.U.L.I.E. 1-800-892-0123
CONTACT 48 HOURS BEFORE EXCAVATING



Edward W. Miller

Edward W. Miller
PROFESSIONAL ENGINEER
#062-025277
EXPIRES NOV. 30, 2009



LOCATION MAP

SCALE: 1" = 2 MILES

NET LENGTH OF IMPROVEMENT = 737.00 FT. = 0.1396 MILES

INDEX OF SHEETS

1. COVER SHEET
 2. PLAN AND PROFILE
 3. GENERAL PLAN AND ELEVATION
 4. SUPERSTRUCTURE
 5. 27" x 36" PPC DECK BEAM
 6. 27" x 36" PCC DECK BEAM DETAILS
 7. 27" x 48" PCC DECK BEAM
 8. 27" x 48" PCC DECK BEAM DEATILS
 9. ABUTMENT
 10. STEEL RAILING
 11. NAME PLATES
 12. PILE DETAILS
 - 13.-14. CROSS SECTIONS
- STANDARDS 000001-05 STANDARD SYMBOLS, ABBREVIATIONS AND PATTERNS
- 280001-05 TEMPORARY EROSION CONTROL SYSTEMS
- BLR 26-2 STEEL PLATE BEAM GUARD RAIL, 27 1/2"
- 630301-05 SHOULDER WIDENING FOR TYPE1, (SPECIAL) GUARDRAIL TERMINALS
- 635006-03 REFLECTOR AND TERMINAL MARKER PLACEMENT
- 701901-01 TRAFFIC CONTROL DEVICES
- BLR 21-8 TYPICAL APPLICATION OF TRAFFIC CONTROL DEVICES
- BLR 27-1 TRAFFIC BARRIER TERMINAL TYPE 5A

CLASSIFICATION : LOCAL ROAD
ADT : 175
DESIGN SPEED : 30 MPH

ILLINOIS DEPARTMENT OF TRANSPORTATION	
Approved	<i>May 20, 2009</i> <i>Melvin Edwards</i> Highway Commissioner Northern Township
Approved	<i>5/14/2009</i> <i>Richard W. Melcher</i> Franklin County Engineer
Passed	<i>May 29, 2009</i> <i>Richard W. Melcher</i> District 9 Engineer of Local Roads and Streets
Releasing for Bid Based on Limited Review	<i>May 29, 2009</i> <i>Mary C. Lamine</i> Deputy Director of Highways, Region 5 Engineer

E. MILLER ENGINEERING, INC.
CONSULTING ENGINEERS
HARRISBURG, ILLINOIS

CONTRACT NO. 99308