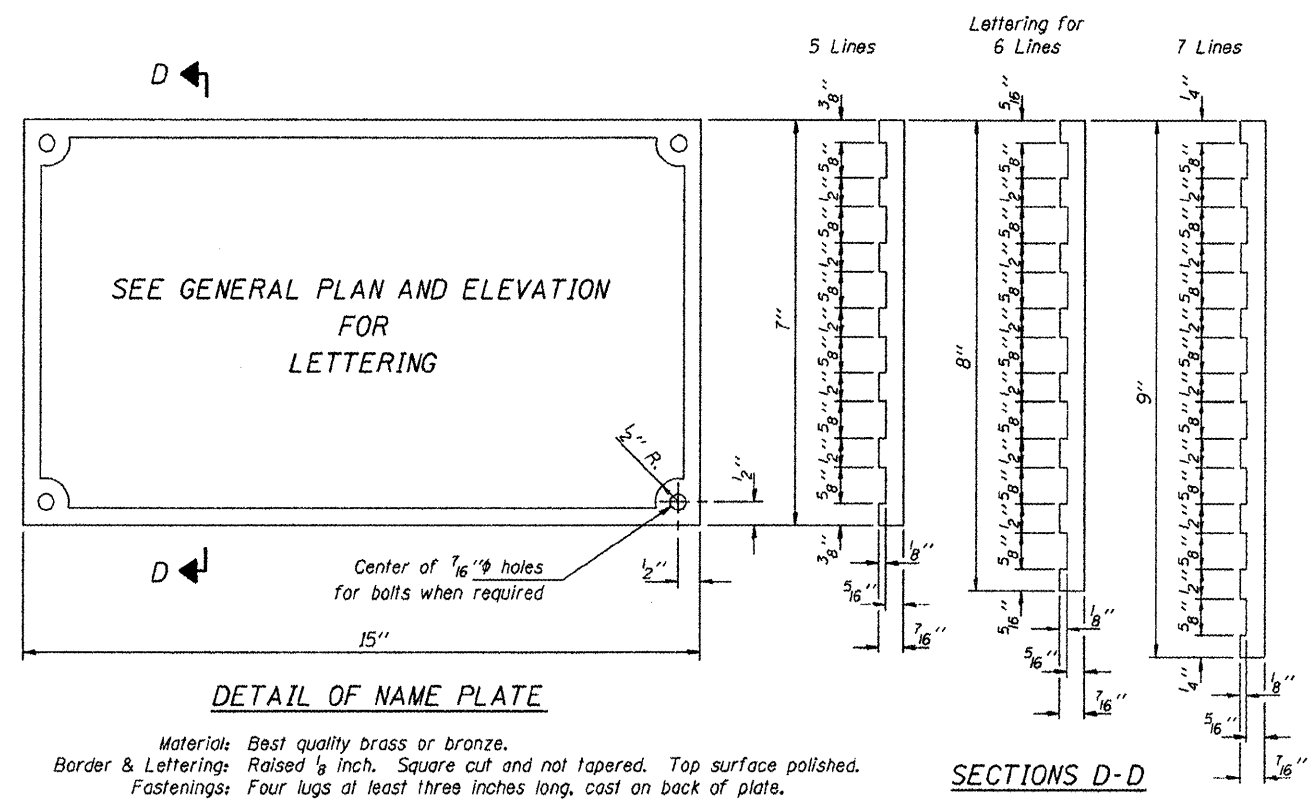


ROUTE	SECTION	COUNTY	TOTAL SHEETS	SHEET NO.
FAU 9901	06-01186-00-BR	UNION	10	8
PROJECT NO. ARA-BRS-0181(048)			CONTRACT NO. 99352	

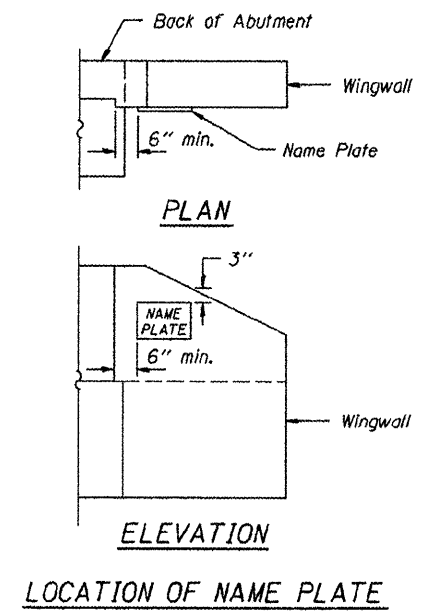


SEE GENERAL PLAN AND ELEVATION FOR LETTERING

DETAIL OF NAME PLATE

Material: Best quality brass or bronze.
 Border & Lettering: Raised 1/8 inch. Square cut and not tapered. Top surface polished.
 Fastenings: Four lugs at least three inches long, cast on back of plate.

SECTIONS D-D



PLAN

ELEVATION

LOCATION OF NAME PLATE

NAME PLATES
 FAU ROUTE 9901 (KRATZINGER HOLLOW RD)
 GREEN CREEK
 SECTION 06-01186-00-BR
 UNION COUNTY
 STRUCTURE NO. 091-3229