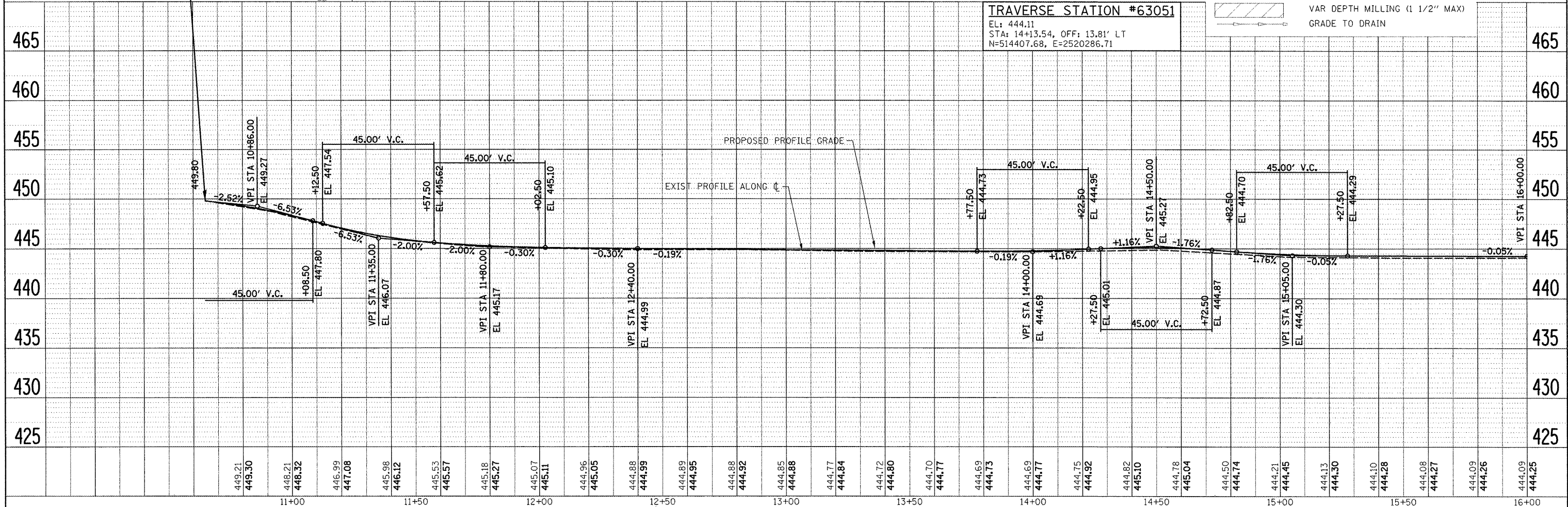
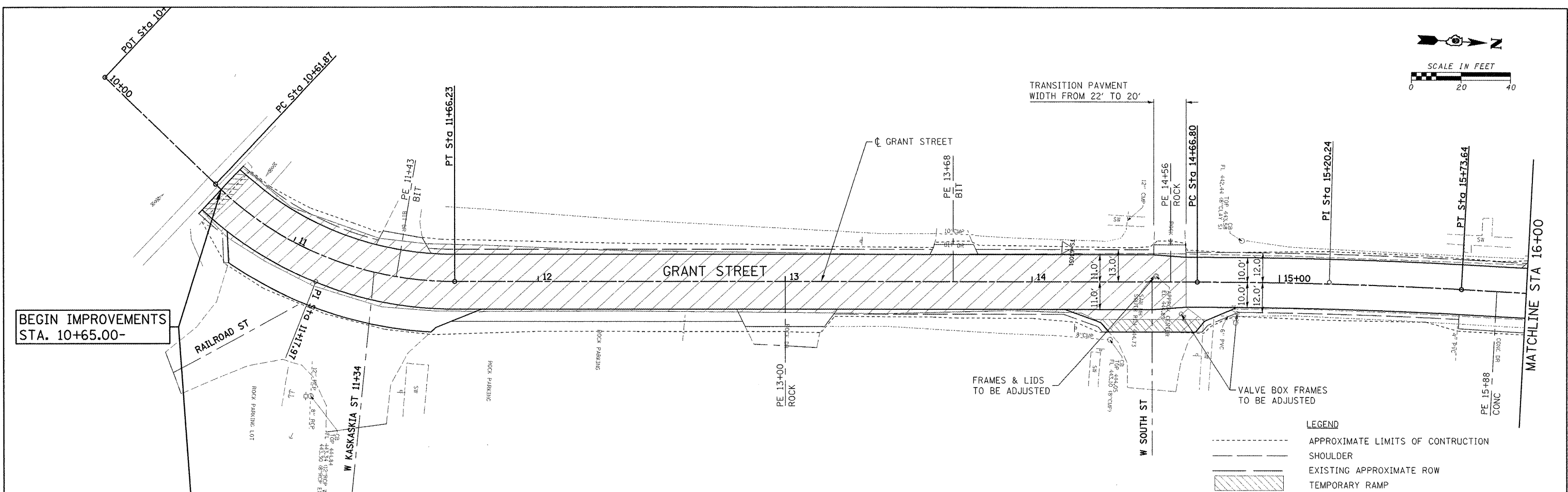


PLAN	SUBMITTED	BY	DATE
	PLOTTED		
	ALIGNED		
	CHECKED		
	DATE		
	NO.		

PROFILE	DESIGNED	BY	DATE
	PLOTTED		
	CHECKED		
	DATE		
	NO.		



TRAVERSE STATION #63051
 EL: 444.11
 STA: 14+13.54, OFF: 13.81' LT
 N=514407.68, E=2520286.71

LEGEND

---	APPROXIMATE LIMITS OF CONSTRUCTION
---	SHOULDER
---	EXISTING APPROXIMATE ROW
---	TEMPORARY RAMP
---	VAR DEPTH MILLING (1 1/2" MAX)
---	GRADE TO DRAIN

FILE NAME = H:\S14\VC_PP_GRANT_8305_1.dgn
 USER NAME = _USERDESCR_

DESIGNED -	DLD	REVISED -	
DRAWN -	KOJ	REVISED -	
CHECKED -		REVISED -	
DATE -		REVISED -	

**STATE OF ILLINOIS
 DEPARTMENT OF TRANSPORTATION**

SOUTH GRANT STREET - PLAN & PROFILE
 SCALE: SHEET NO. OF SHEETS STA. TO STA.

F.A.U. RTE.	SECTION	COUNTY	TOTAL SHEETS	SHEET NO.
VAR	09-00028-00-R5	PERRY	12	6
				CONTRACT NO. 99386
ILLINOIS FED. AID PROJECT ARA-5084 (003)				