

ROUTE	SECTION	COUNTY	TOT. SHTS.	SHT.
FAS 824	07-00198-00-RS	JEFFERSON	2	1
JEFFERSON COUNTY ROAD DISTRICT				

CONTRACT NO. 99410

STATE OF ILLINOIS
DEPARTMENT OF TRANSPORTATION
DIVISION OF HIGHWAYS

PLANS FOR PROPOSED
AMERICAN RECOVERY AND REINVESTMENT ACT OF 2009

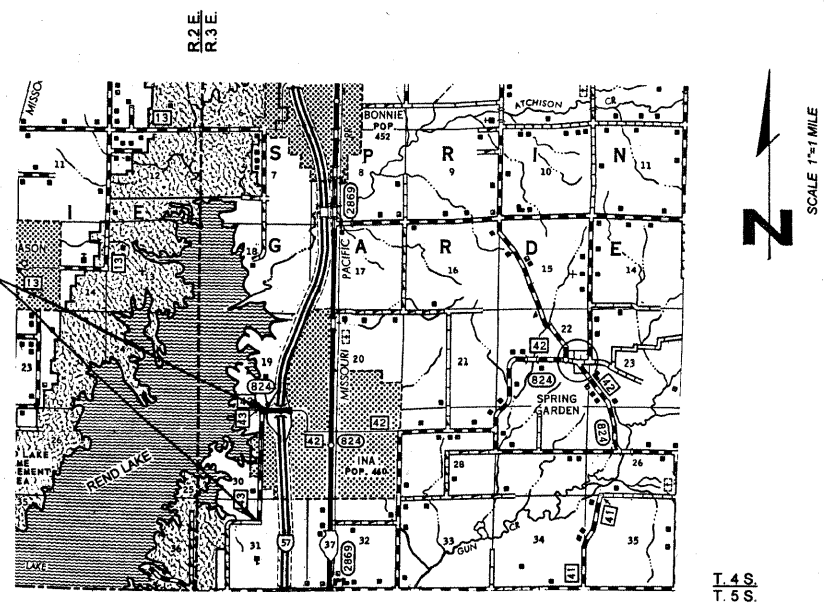
FAS 824 CH 42,43
SECTION 07-00198-00-RS
JEFFERSON COUNTY, IL.
PROJECT NO. ARA-RS-0081(059)
JOB NO. C-99-534-08

- INDEX OF SHEETS
- COVER SHEET, LOCATION MAP
SCHEDULE OF QUANTITIES
 - GENERAL NOTES, TYPICAL EXISTING
AND PROPOSED CROSS-SECTIONS,
BITUMINOUS MIXTURE BREAKDOWN,
STRIPING, PATCHING, SIDE ROAD
DETAILS, PRIVATE ENTRANCES,
MAILBOX TURNOUTS

- STANDARDS
- 000001-05
 - 442201-03
 - 701006-03
 - 701306-02
 - 701311-03
 - 701336-05
 - 701901-01
 - 780001-02
 - BLR 21-8
 - BLR 22-6
 - 635001-08
 - 635006-03
 - 635011-02

SCHEDULE OF QUANTITIES			
QUANTITY	UNIT	ITEM	CODE
894	FOOT	SHORT-TERM PAVEMENT MARKING REMOVAL	XX003140
25	TON	AGGREGATE SURFACE COURSE TYPE B	40200800
1720	GALLON	BITUMINOUS MATERIALS (PRIME COAT)	40600100
1083	TON	LEVELING BINDER (MACHINE METHOD) N50	40600625
19	SQUARE YARD	TEMPORARY RAMP	40600990
2238	TON	HOT MIX ASPHALT SURFACE COURSE MIX "C" N50	40603310
112	SQUARE YARD	HOT MIX ASPHALT SURFACE REMOVAL VARIABLE DEPTH	44000198
216	SQUARE YARD	CLASS D PATCH TYPE II 9"	44201753
91	SQUARE YARD	CLASS D PATCH TYPE III 9"	44201757
95	SQUARE YARD	CLASS D PATCH TYPE IV 9"	44201759
16969	SQUARE YARD	AREA REFLECTIVE CRACK CONTROL TREATMENT TYPE A	44300300
508	TON	AGGREGATE SHOULDERS, TYPE B	48101200
575	FOOT	STEEL PLATE BEAM GUARDRAIL, TYPE A @ FOOT POSTS	63000001 *
4	EACH	TRAFFIC BARRIER TERMINAL TYPE 1 (SPECIAL) TANGENT	63100167 *
1	LUMP SUM	MOBILIZATION	67100100
1	LUMP SUM	TRAFFIC CONTROL AND PROTECTION, STANDARD 701306	70100460
1	LUMP SUM	TRAFFIC CONTROL AND PROTECTION, STANDARD 701336	70100600
1388	FOOT	SHORT-TERM PAVEMENT MARKING	70300100
18773	FOOT	THERMOPLASTIC PAVEMENT MARKING-LINE 4"	78000200 *
12	EACH	GUARDRAIL MARKERS	78200405 *
4	EACH	TERMINAL MARKER-DIRECT APPLIED	78201000 *

* SPECIALTY ITEMS



TOTAL SECTION LENGTH=6,942 FT.=1.315 MILES
OMISSIONS= 0 FT.
NET SECTION LENGTH = 6,942 FT.= 1.315 MILES

FUNCTIONAL CLASSIFICATION=MAJOR COLLECTOR
DESIGN SPEED=50 MPH
ADT=1090

J. U. L. I. E.
JOINT UTILITY LOCATING
INFORMATION FOR EXCAVATION
1-800-892-0123
WWW.ILLINOIS1CALL.COM

APPROVED 10-26 2009

Steve Schwanke
COUNTY ENGINEER
JEFFERSON COUNTY HIGHWAY DEPT.
750 OLD FAIRFIELD RD.
MT. VERNON, IL. 62864
PH. (618)244-6031
LICENSE EXP. 11-30-09

PASSED 10/30 2009

Richard W. Melcher
DISTRICT NINE ENGINEER OF
LOCAL ROADS AND STREETS

Releasing for
Bid based on
limited review 11/4 2009

Mary C. Lomis
DEPUTY DIRECTOR OF HIGHWAYS
REGION FIVE ENGINEER

STATE OF ILLINOIS
DEPARTMENT OF TRANSPORTATION