

INDEX OF SHEETS

01-15-2016 LETTING ITEM 006

STATE OF ILLINOIS

DEPARTMENT OF TRANSPORTATION
DIVISION OF HIGHWAYS

**PROPOSED
HIGHWAY PLANS**

**FAI 80 (I-80) AND FAP 46 (IL 251)
SECTION: 2016-1 TREE REM FOR EAB CONT**

**TYPE OF REMOVAL - TREE REMOVAL
LASALLE & BUREAU COUNTIES**

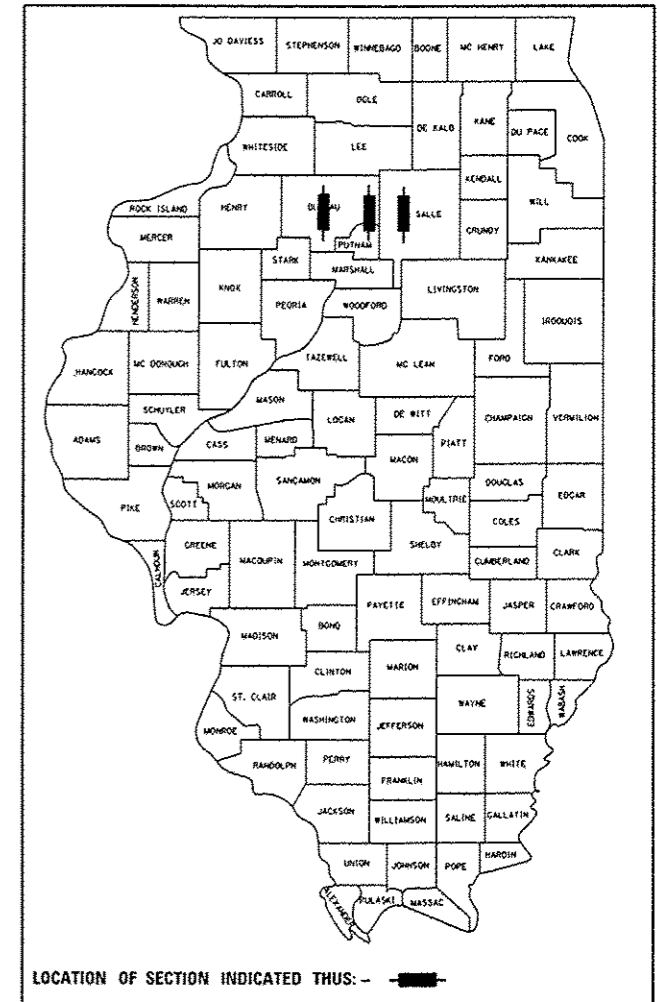
C-93-007-16

F.A.I. RTE.	SECTION	COUNTY	TOTAL SHEETS	SHEET NO.
80/251	*	**	18	1

ILLINOIS CONTRACT NO. 66F02

** LASALLE & BUREAU

D-93-012-16



FUNCTIONAL CLASSIFICATION:
INTERSTATE
2013 I-80 ADT=18,100 TO 21,300
SU=11% MU=28%
(SEE NEXT PAGE FOR IL 251 DATA)

STATE OF ILLINOIS
DEPARTMENT OF TRANSPORTATION
DIVISION OF HIGHWAYS

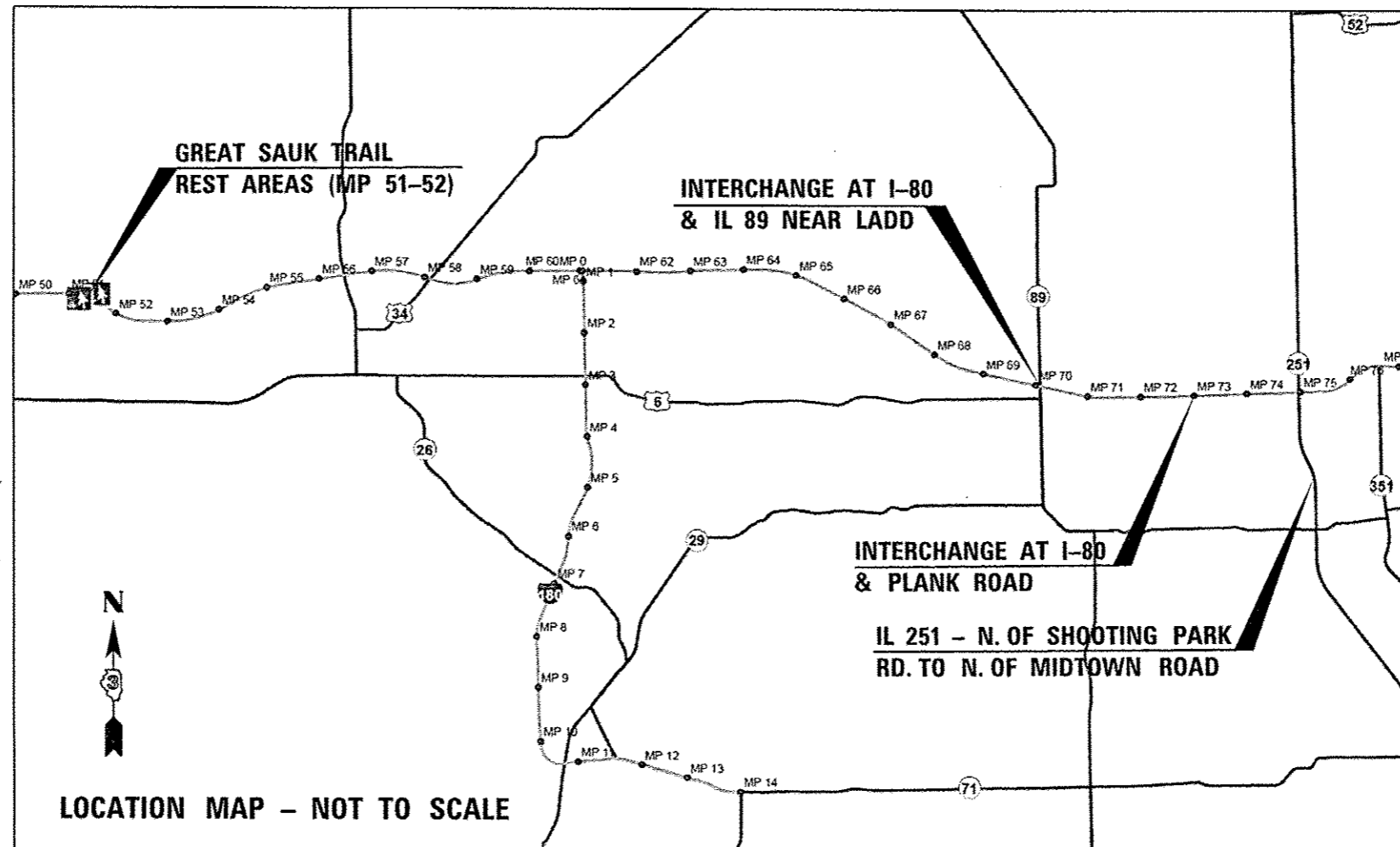
SUBMITTED *October 13 2015*
Paul Coate, P.E.
DEPUTY DIRECTOR OF HIGHWAYS, REGION ENGINEER
Dec 4 2015
John D. Baranzelli, P.E.
ENGINEER OF DESIGN AND ENVIRONMENT
Dec 4 2015
Omer Osman, P.E.
DIRECTOR OF HIGHWAYS, CHIEF ENGINEER

**PRINTED BY THE AUTHORITY
OF THE STATE OF ILLINOIS**

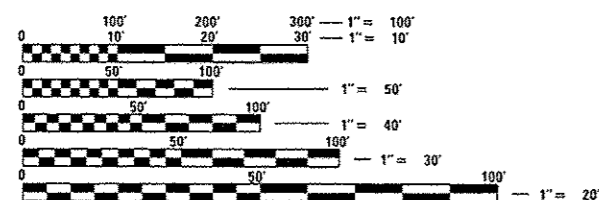
LIST OF ILLINOIS DOT HIGHWAY STANDARDS

- 000001-06 STANDARD SYMBOLS, ABBREVIATIONS AND PATTERNS
- 001006 DECIMAL OF AN INCH AND OF A FOOT
- 701101-04 OFF-RD OPERATIONS, MULTILANE, 15' TO 24" FROM PAVEMENT EDGE
- 701106-02 OFF-RD OPERATIONS, MULTILANE, MORE THAN 15' AWAY
- ~~701301-04 LANE CLOSURE, 2L, 2W, SHORT TIME OPERATIONS~~
- 701456-03 PARTIAL EXIT RAMP CLOSURE FREEWAY/EXPRESSWAY
- 701801-05 SIDEWALK, CORNER OR CROSSWALK CLOSURE
- 701901-04 TRAFFIC CONTROL DEVICES

701606-10



LOCATION MAP - NOT TO SCALE



FULL SIZE PLANS HAVE BEEN PREPARED USING STANDARD ENGINEERING SCALES. REDUCED SIZED PLANS WILL NOT CONFORM TO STANDARD SCALES. IN MAKING MEASUREMENTS ON REDUCED PLANS, THE ABOVE SCALES MAY BE USED.

J.U.L.I.E.
JOINT UTILITY LOCATION INFORMATION FOR EXCAVATION
1-800-892-0123
OR 811

DISTRICT 3 (815) 434-6131
PROJECT ENGINEER: DAVE ALEXANDER, P.E.
UNIT CHIEF: DUANE LUKKARI, P.E.
TOWNSHIPS: VARIOUS
CONTRACT NO. 66F02

Rev.

GENERAL NOTES

FOR STABILIZATION, ALL TYPE III BARRICADES WILL REQUIRE A MINIMUM OF FOUR SAND BAGS PER BARRICADE.

SEEDING WILL NOT BE PERMITTED AT ANY TIME WHEN THE GROUND IS FROZEN, WET, OR IN AN UNTILLABLE CONDITION. LOCATIONS TO BE SEEDED WILL BE DETERMINED BY THE ENGINEER.

ONLY THOSE TREES DESIGNATED BY THE ENGINEER OR LISTED IN THE TREE REMOVAL SCHEDULE SHALL BE REMOVED. THE CONTRACTOR SHALL PROTECT ALL REMAINING TREES FROM DAMAGE DUE TO HIS OPERATIONS.

THE FINISHED EARTHWORK SHALL HAVE A VEGETATION SUSTAINING SOIL COVERING THE TOP FOUR INCHES (100 MILLIMETERS) IN AREAS TO BE SEEDED OR SODDED. THE VEGETATION SUSTAINING SOIL REQUIRED WILL NOT BE PAID FOR SEPARATELY BUT WILL BE INCLUDED IN THE COST OF THE TREE REMOVAL PAY ITEMS.

ALL EXCAVATED MATERIAL, WHICH INCLUDES DIGGING OR GRADING OF ANY SOIL OR FILL MATERIAL, WITH THE EXCEPTION OF AGGREGATE FILLS, MUST BE INCORPORATED WITHIN THE IDOT RIGHT OF WAY DUE TO ENVIRONMENTAL DOCUMENTATION REQUIREMENTS.

ANY REFERENCE TO A STANDARD IN THESE PLANS SHALL BE INTERPRETED TO MEAN THE EDITION AS INDICATED BY THE SUBNUMBER SHOWN IN THE LIST OF STANDARDS OR THE COPY INCLUDED IN THESE PLANS.

THE CONTRACTOR'S ATTENTION IS DIRECTED TO THE PRESENCE OF DEPARTMENT-OWNED UNDERGROUND UTILITIES WITHIN THE LIMITS OF THE PROPOSED IMPROVEMENT. THE CONTRACTOR SHALL REQUEST THE ILLINOIS DEPARTMENT OF TRANSPORTATION IN OTTAWA (815-434-8417) TO LOCATE THE UNDERGROUND FACILITIES, PROVIDING A MINIMUM OF 72 HOURS NOTICE. THE DEPARTMENT IS NOT A MEMBER OF THE JOINT UTILITY LOCATING INFORMATION FOR EXCAVATORS (JULIE) SYSTEM.

ALL DAMAGE TO DEPARTMENT OWNED UNDERGROUND FACILITIES, CAUSED BY THE CONTRACTOR SHALL BE REPAIRED TO THE SATISFACTION OF THE DEPARTMENT AT THE CONTRACTOR'S EXPENSE. THIS SHALL INCLUDE ALL TEMPORARY REPAIRS REQUIRED TO KEEP THE FACILITY OPERATIONAL WHILE MATERIAL IS BEING OBTAINED TO MAKE PERMANENT REPAIRS.

THE CONTRACTOR SHALL CONTACT JULIE AT LEAST 48 HOURS PRIOR TO EXCAVATION TO DETERMINE WHICH UTILITIES ARE IN THE AREA.

COMMITMENTS

ENVIRONMENT COORDINATION

FUNCTIONAL CLASSIFICATION:

FOR IL 251: URBAN ARTERIAL

2013 ADT = 15,000
SU = 3.0% MU = 2.0%

STATE OF ILLINOIS
DEPARTMENT OF TRANSPORTATION
DISTRICT THREE
AS BUILT INFORMATION

STATE OF ILLINOIS
DEPARTMENT OF TRANSPORTATION
DISTRICT THREE

SUPERVISING CONSTRUCTION FIELD ENGINEER

RESIDENT ENGINEER / TECHNICIAN

START & END DATES
OF CONSTRUCTION:

INSPECTORS:

PREPARED BY: Tom Beaulieu
DISTRICT STUDIES & PLANS ENGINEER

DATE: October 13, 2015

EXAMINED BY: Herbert K. Jones
DISTRICT CONSTRUCTION ENGINEER

Wayne J. Phillips
DISTRICT MATERIALS ENGINEER

Bruce A. Hatcher
DISTRICT OPERATIONS ENGINEER

FILE NAME *	USER NAME * lukkeridp	DESIGNED -	REVISED -	STATE OF ILLINOIS DEPARTMENT OF TRANSPORTATION	GENERAL NOTES	F.A.I. RTE.	SECTION	COUNTY	TOTAL SHEETS	SHEET NO.	
p:\11094EBID\INTEG\Illinois.gov\PI\001\Documents\IDOT Offices\District 3\Projects\0364\DRAWING\0306F02-shr-cover.dgn		CHECKED -	REVISED -			80/251	*	**	18	2	
PLOT SCALE * 1/8"=1'-0"		DATE -	REVISED -			SCALE:	SHEET 1	OF 1	SHEETS	STA.	TO STA.
PLOT DATE * 10/10/2015											

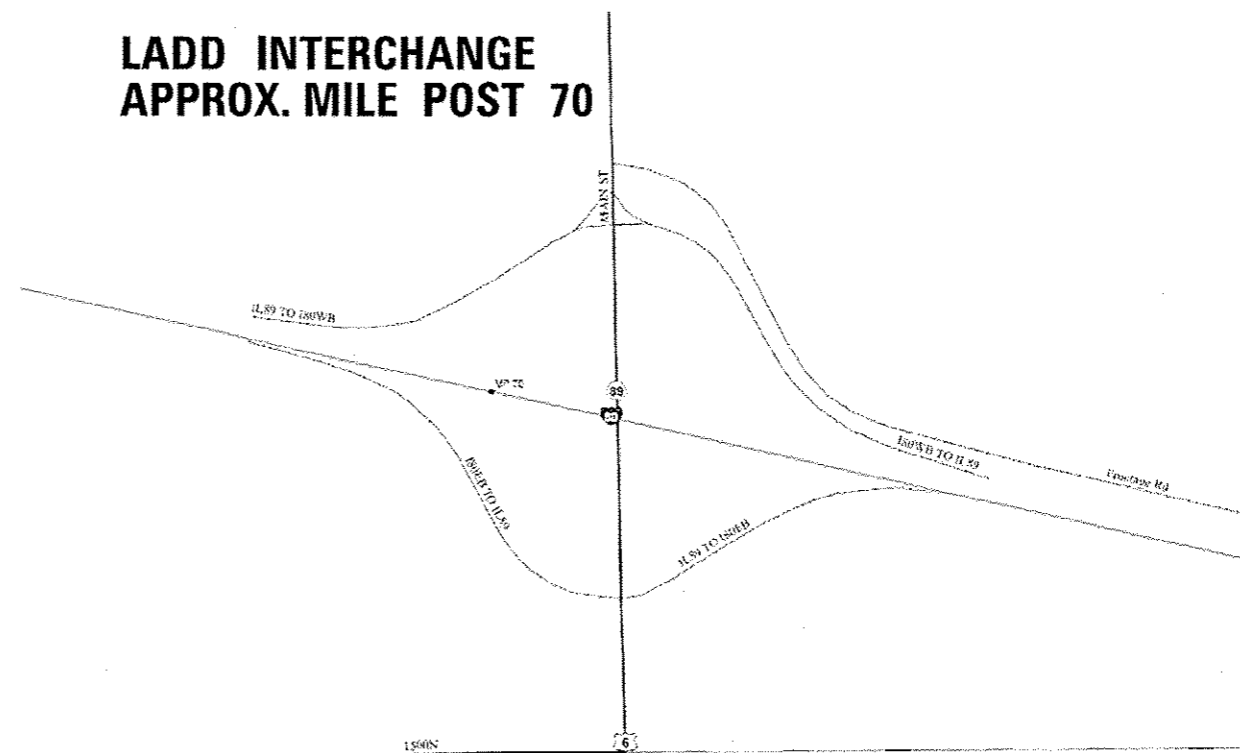
** LASALLE & BUREAU
*2016-1 TREE REMOVAL FOR EAB CONTROL

ILLINOIS NON FED. AID PROJECT

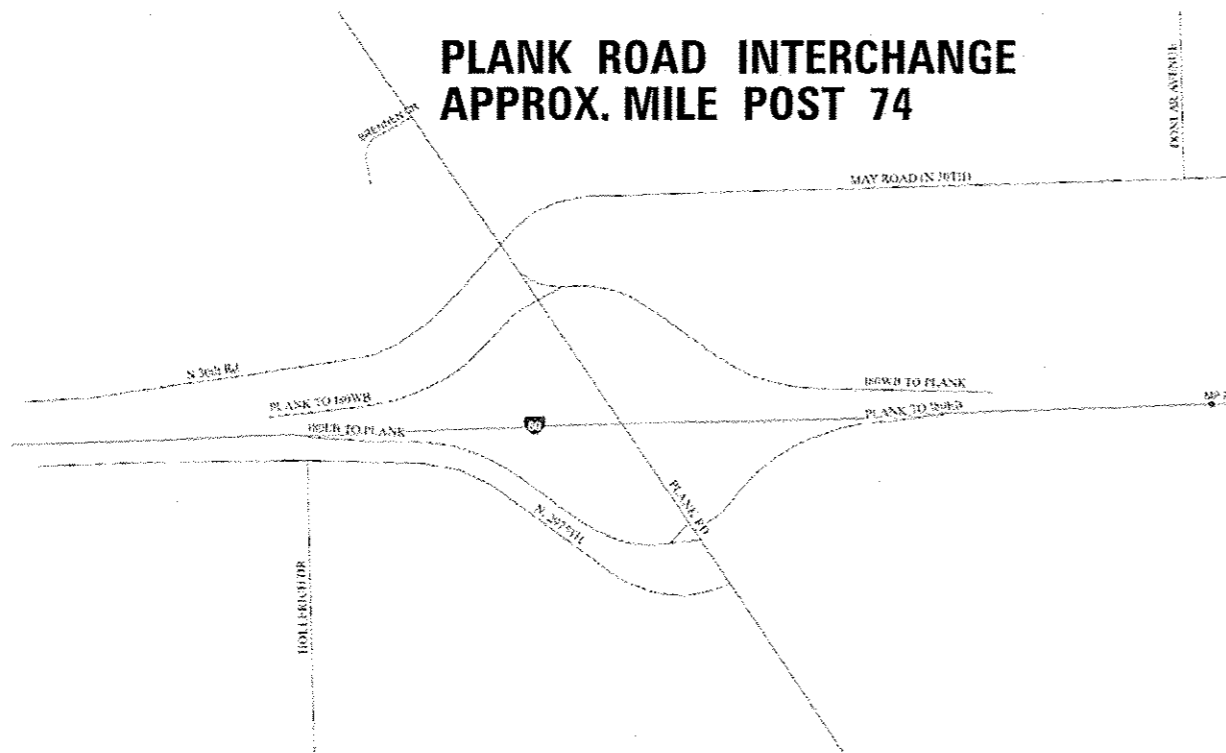
**GREAT SAUK TRAIL REST AREAS
APPROXIMATE MILE POST 51**



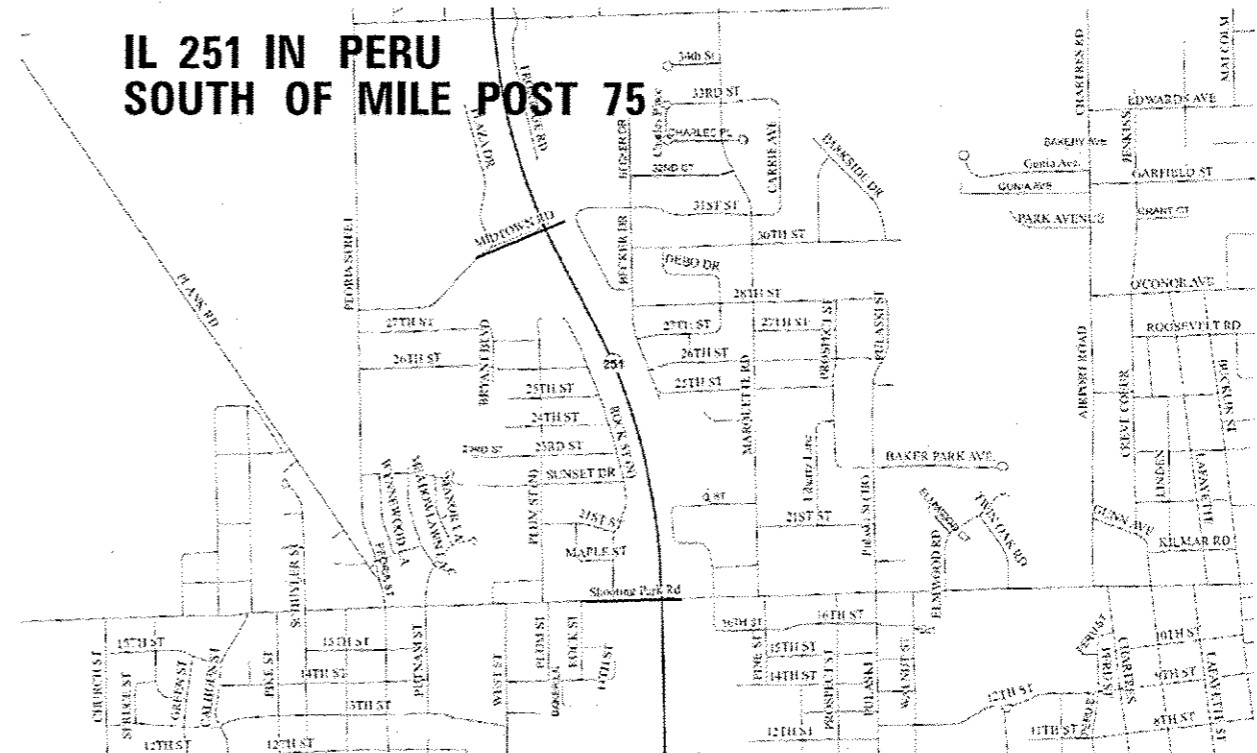
**LADD INTERCHANGE
APPROX. MILE POST 70**



**PLANK ROAD INTERCHANGE
APPROX. MILE POST 74**



**IL 251 IN PERU
SOUTH OF MILE POST 75**



FILE NAME *	USER NAME * jkkerrid	DESIGNED -	REVISED -
p:\N\1084EB\DIGITIZED\illinois.gov\KIDOT\Documents\1007_Offices\Districts\3\Projects\0306\DRAWING\Date\9266F02-shs-cover.dgn		DATE -	REVISED -
PLOT SCALE * 1/8"=1'-0"	CHECKED -	REVISED -	REVISED -
PLOT DATE * 12/13/2015	DATE -	REVISED -	REVISED -

**STATE OF ILLINOIS
DEPARTMENT OF TRANSPORTATION**

LOCATION MAPS

SCALE: SHEET 1 OF 1 SHEETS STA. TO STA.

** LASALLE & BUREAU			
* 2016-1 TREE REMOVAL FOR EAB CONTROL			
F.A.I. RTE.	SECTION	COUNTY	TOTAL SHEETS
80/251	*	**	18
			SHEET NO. 3
CONTRACT NO. 66FOZ			
ILLINOIS NON FED. AID PROJECT			

SUMMARY OF QUANTITIES				CONSTRUCTION CODE		
				BUREAU CTY.	LASALLE CTY.	LASALLE CTY.
CODE NO.	ITEM	UNIT	TOTAL QUANTITY	ROADWAY	ROADWAY	ROADWAY
				0031	0031	0031
				RURAL	RURAL	URBAN
20100110	TREE REMOVAL (6 TO 15 UNITS DIAMETER)	UNIT	1688	1200	265	223
20100210	TREE REMOVAL (OVER 15 UNITS DIAMETER)	UNIT	573	401	116	56
67100100	MOBILIZATION	LSUM	1	0.5	0.25	0.25
70100825	TRAFFIC CONTROL AND PROTECTION, STANDARD 701456	LSUM	1	0.5	0.5	0
70106800	CHANGEABLE MESSAGE SIGN	CAL MO	1	0.5	0.25	0.25
X2010310	TREE REMOVAL (SPECIAL)	UNIT	192	167	25	0
X7010216	TRAFFIC CONTROL AND PROTECTION, (SPECIAL)	LSUM	1	0.5	0.25	0.25

7

FILE NAME =	USER NAME = lukkarido	DESIGNED -	REVISED -	STATE OF ILLINOIS DEPARTMENT OF TRANSPORTATION	SUMMARY OF QUANTITIES	F.A.I. RTE.	SECTION	COUNTY	TOTAL SHEETS	SHEET NO.
ew\ILL284EBIDWTECallinos.gov\PIWIDOT\Documents\DOT Offices\District 3\Projects\026	FORWARD	REVISED	REVISED			50/251	*	**	18	4
PLOT SCALE = 181.8969 1/4 in.	CHECKED -	REVISED -	REVISED -			CONTRACT NO. 66F02				
PLOT DATE = 10/13/2015	DATE -	REVISED -	REVISED -			ILLINOIS FED. AID PROJECT				
				SCALE: SHEET NO. OF SHEETS STA. TO STA.						

** LASALLE & BUREAU
*2016-1 TREE REMOVAL FOR EAB CONTROL

GREAT SAUK TRAIL - TREE REMOVAL SCHEDULE				
REST AREA TREE NO.	EB OR WB	SPECIAL	DIAMETER	DIAMETER
		UNIT	6-15 UNIT	OVER 15 UNIT
1	WB		12	
2	WB		13	
3	WB			17
4	WB		14	
5	WB			22
6	WB		13	
7	WB		11	
8	WB		11	
9	WB		10	
10	WB		13	
11	WB		14	
12	WB			16
13	WB		9	
14	WB		13	
15	WB		14	
16	WB		11	
17	WB		12	
18	WB		6	
19	WB	5		
20	WB		7	
21	WB		14	
22	WB		12	
23	EB			17
24	EB			20
25	EB		15	
26	EB		15	
27	EB		12	
28	EB			17
29	EB		14	
30	EB		14	
31	EB		12	
32	EB			15
33	EB		12	
34	EB		13	
35	EB		11	
36	EB		11	
37	EB		12	
38	EB		13	
39	EB		12	
40	EB		11	
41	EB		10	
42	EB		11	
43	EB		6	
44	EB		12	
45	EB		11	
46	EB		10	
47	EB		11	
48	EB		10	
49	EB		9	
TOTALS		5	476	124

LADD INTERCHANGE - TREE REMOVAL SCHEDULE					
TREE NUMBER(S)	QUADRANT LOCATION	NUMBER OF TREES AND SIZE	SPECIAL	DIAMETER	DIAMETER
			UNIT	6-15 UNIT	OVER 15 UNIT
1	NW QUADRANT				21
2	NW QUADRANT			8	
3	NW QUADRANT				16
4	NW QUADRANT				17
5	NW QUADRANT			7	
6	NW QUADRANT			8	
7	NW QUADRANT			13	
8	NW QUADRANT			9	
9	NW QUADRANT			8	
10	NW QUADRANT			8	
11	NW QUADRANT				17
12	NW QUADRANT			10	
13	NW QUADRANT			10	
14	NW QUADRANT			7	
15	NW QUADRANT		5		
16	NW QUADRANT			13	
17	NE QUADRANT		5		
18	NE QUADRANT			12	
19	NE QUADRANT		5		
20	NE QUADRANT			11	
21	NE QUADRANT			9	
22	NE QUADRANT				34
23	NE QUADRANT				21
24	NE QUADRANT				16
25	NE QUADRANT			9	
26-38	N. OF FRT. ROAD	13 TREES X 3"	39		
39-55	N. OF FRT. ROAD	17 TREES X 4"	68		
56-63	N. OF FRT. ROAD	8 TREES X 5"	40		
64-76	N. OF FRT. ROAD	13 TREES X 6"		78	
77-87	N. OF FRT. ROAD	11 TREES X 7"		77	
88-94	N. OF FRT. ROAD	7 TREES X 8"		56	
95-105	N. OF FRT. ROAD	11 TREES X 9"		99	
106-113	N. OF FRT. ROAD	8 TREES X 10"		80	
114	N. OF FRT. ROAD	1 TREE X 13"		13	
115-118	N. OF FRT. ROAD	4 TREE X 14"		56	
119	N. OF FRT. ROAD	1 TREE X 16"			16
120-121	N. OF FRT. ROAD	2 TREES X 17"			34
122	N. OF FRT. ROAD	1 TREE X 20"			20
123	N. OF FRT. ROAD	1 TREE X 23"			23
124	SW QUADRANT			10	
125	SW QUADRANT			8	
126	SW QUADRANT			8	
127	SW QUADRANT			10	
128	SE QUADRANT			10	
129	SE QUADRANT			12	
130	SE QUADRANT			8	
131	SE QUADRANT			9	
132	SE QUADRANT			10	
133	SE QUADRANT			9	
134	SE QUADRANT			14	
135	SE QUADRANT				26
136	SE QUADRANT				16
137	SE QUADRANT			15	
TOTALS			162	724	277

TREES 2/3 AND 6/7/8 ARE MUTIPLE TRUNK TREES

FILE NAME =	USER NAME = lukkaridp	DESIGNED -	REVISED -	STATE OF ILLINOIS DEPARTMENT OF TRANSPORTATION	SCHEDULES		F.A.I. RTE. 80/251	SECTION *	COUNTY **	TOTAL SHEETS 18	SHEET NO. 5	
pw:\IL084EBIDINTEG.111nois.gov\PIDOT\Documents\IDOT Offices\District 3\Projects\03666\DRAWING\B366F02-sht-schedule.dgn	PLOT SCALE = 101.2306' / in.	CHECKED -	REVISED -		SCALE:	SHEET NO. 1 OF 1 SHEETS	STA.	TO STA.	CONTRACT NO. 66F02			
	PLOT DATE = 10/13/2015	DATE -	REVISED -		ILLINOIS FED. AID PROJECT							

** LASALLE & BUREAU
*2016-1 TREE REMOVAL FOR EAB CONTROL

PLANK ROAD - TREE REMOVAL SCHEDULE				
TREE NUMBER	QUADRANT LOCATION	SPECIAL UNIT	DIAMETER 6-15 UNIT	DIAMETER OVER 15 UNIT
1	NW		7	
2	NW		11	
3	NW		7	
4	NW	5		
5	NW	5		
6	NW		7	
7	NW		7	
8	NW		10	
9	NW		9	
10	NW		6	
11	NW	5		
12	NW		11	
13	NW	5		
14	NW		6	
15	NW		7	
16	NW	5		
17	NW		9	
18	NW		14	
19	NW		14	
20	NW		13	
21	NW			18
22	NE		14	
23	NE		15	
24	NE			18
25	NE		13	
26	NE		15	
27	NE		12	
28	NE		10	
29	NE		11	
30	NE		13	
31	NE		12	
32	NE		12	
33	SW			19
34	SW			21
35	SE			20
36	SE			20
TOTALS		25	265	116

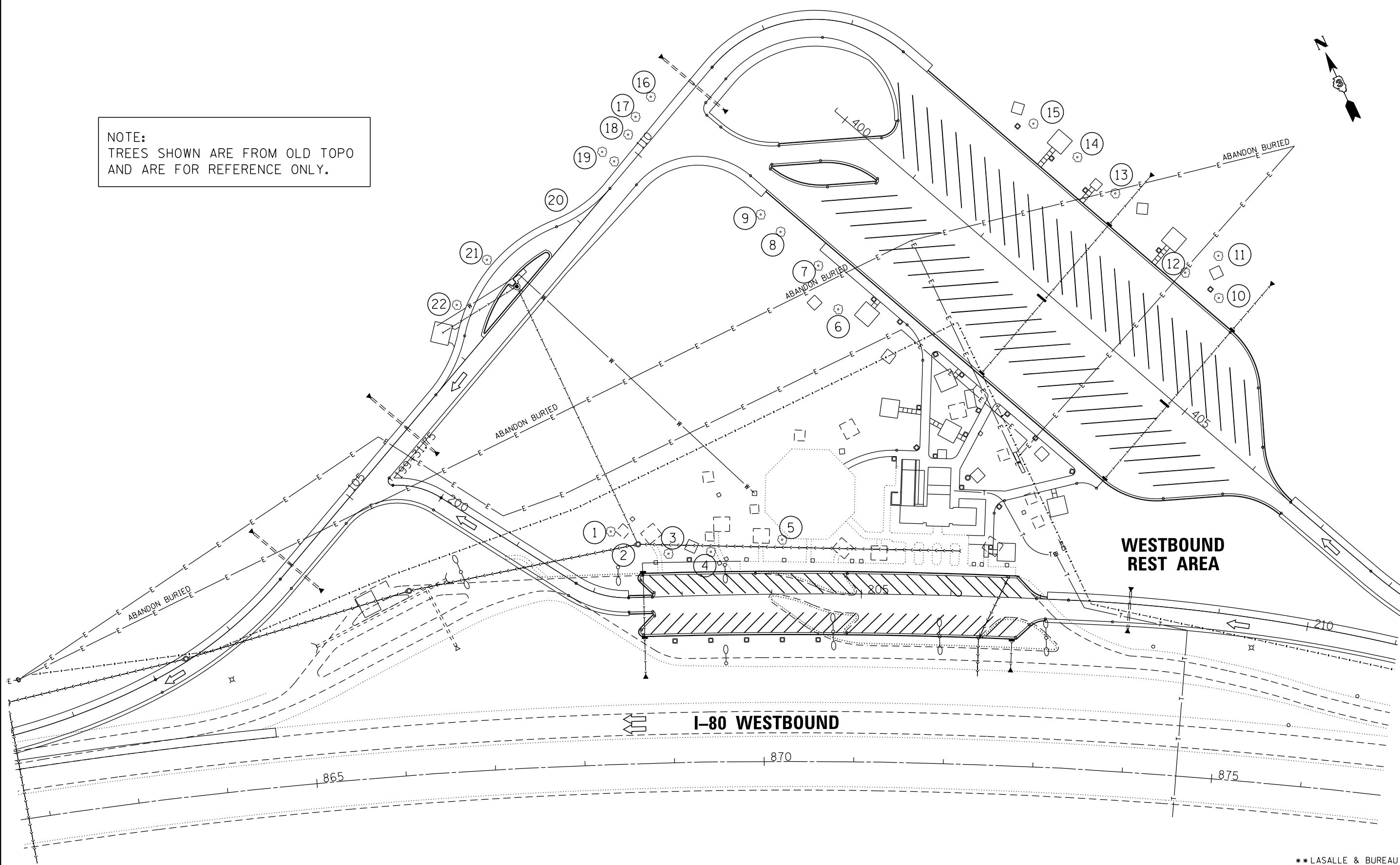
TREES 18/19 AND 20/21 ARE DOUBLE TRUNK TREES

IL 251 - TREE REMOVAL SCHEDULE				
TREE NUMBER	SIDE OF ROAD	SPECIAL UNIT	DIAMETER 6-15 UNIT	DIAMETER OVER 15 UNIT
1	WEST			16
2	WEST		11	
3	WEST		13	
4	WEST		13	
5	WEST		13	
6	WEST		12	
7	WEST			23
8	EAST			17
9	EAST		15	
10	EAST		15	
11	EAST		12	
12	EAST		14	
13	EAST		12	
14	EAST		13	
15	EAST		8	
16	EAST		11	
17	EAST		9	
18	EAST		14	
19	EAST		11	
20	EAST		14	
21	EAST		13	
TOTALS		0	223	56

** LASALLE & BUREAU
*2016-1 TREE REMOVAL FOR EAB CONTROL

FILE NAME =	USER NAME = lukkaridp	DESIGNED -	REVISED -	STATE OF ILLINOIS DEPARTMENT OF TRANSPORTATION	SCHEDULES		F.A.I. RTE.	SECTION	COUNTY	TOTAL SHEETS	SHEET NO.	
p:\1\1084EBIDINTEG\Illinois.gov\PIWIDOT\Documents\IDOT Offices\District 3\Projects\0366F02\Drawings\0366F02-sht-schedule.dgn		CHECKED -	REVISED -		SCALE:	SHEET NO. 1 OF 1 SHEETS	STA.	TO STA.	**	**	18	6
		PLOT SCALE = 1/8" = 1' / in.	REVISED -		CONTRACT NO. 66F02							
		PLOT DATE = 10/13/2015	REVISED -		ILLINOIS FED. AID PROJECT							

NOTE:
TREES SHOWN ARE FROM OLD TOPO
AND ARE FOR REFERENCE ONLY.



FILE NAME =	USER NAME = lukkaridp	DESIGNED -	REVISED -
pw:\jll084EBIDINTEG.illinois.gov\PWIDOT\Documents\DOT Offices\District 3\Projects\03666\Drawings\03666F02-sht-details.dgn		REVISED -	REVISED -
Default	PLOT SCALE = 104.4336' / in.	CHECKED -	REVISED -
	PLOT DATE = 10/13/2015	DATE -	REVISED -

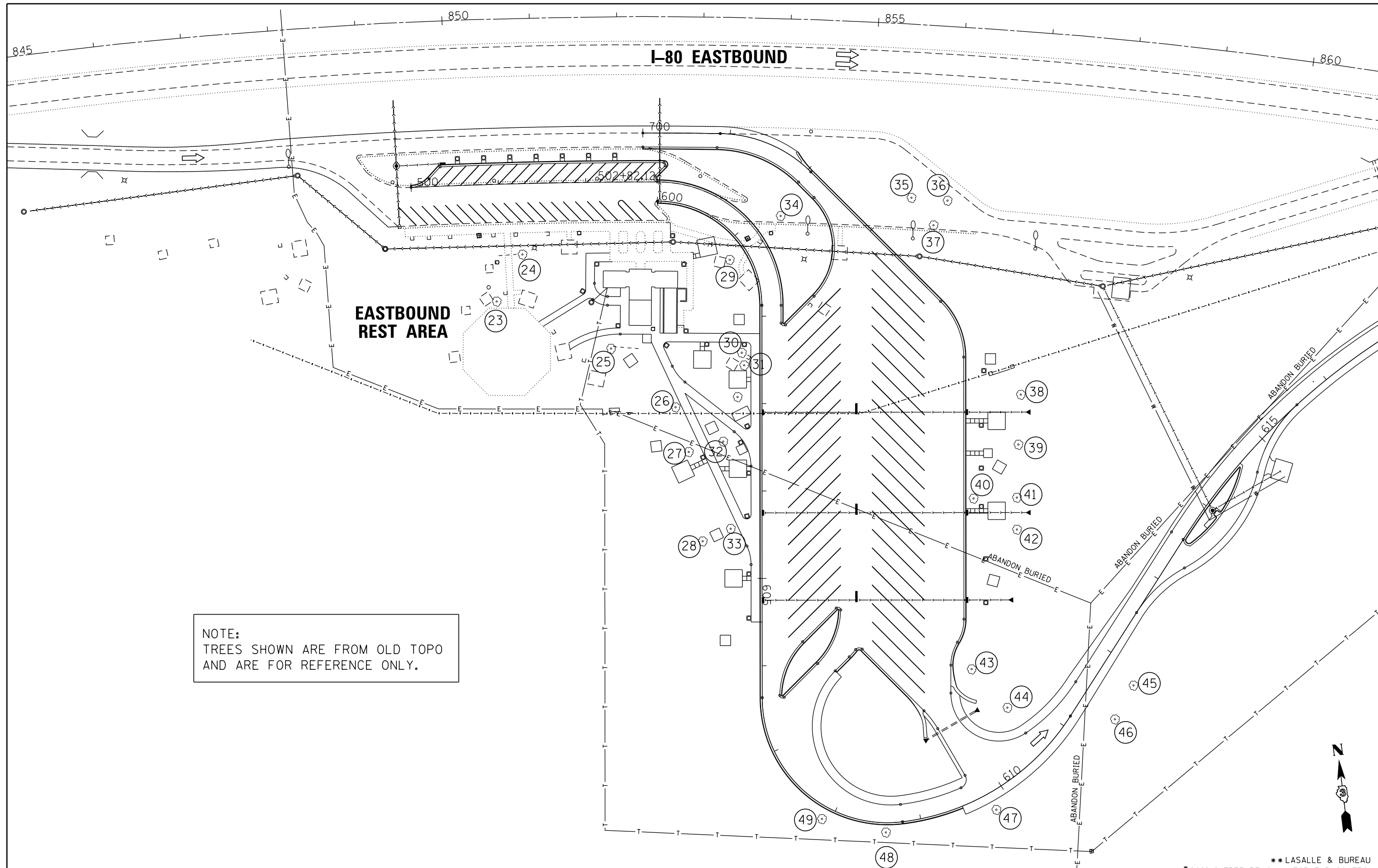
**STATE OF ILLINOIS
DEPARTMENT OF TRANSPORTATION**

**I-80 AND GREAT SAUK TRAIL
WB REST AREA**

SCALE: SHEET OF SHEETS STA. TO STA.

F.A.I. RTE. 80/251	SECTION *	COUNTY **	TOTAL SHEETS 18	SHEET NO. 7
CONTRACT NO. 66F02				
ILLINOIS FED. AID PROJECT				

** LASALLE & BUREAU
* 2016-1 TREE REMOVAL FOR EAB CONTROL



NOTE:
TREES SHOWN ARE FROM OLD TOPO
AND ARE FOR REFERENCE ONLY.

FILE NAME =	USER NAME = lukkaridp	DESIGNED -	REVISED -
p:\11\084EBIDINTEG.illinois.gov\PIWIDOT\Documents\DOT Offices\District 3\Projects\0366\Drawings\0366F02-sht-details.dgn		DRAWN -	REVISED -
Default	PLOT SCALE = 104.4336' / 1in.	CHECKED -	REVISED -
	PLOT DATE = 10/13/2015	DATE -	REVISED -

**STATE OF ILLINOIS
DEPARTMENT OF TRANSPORTATION**

**I-80 AND GREAT SAUK TRAIL
EB REST AREA**

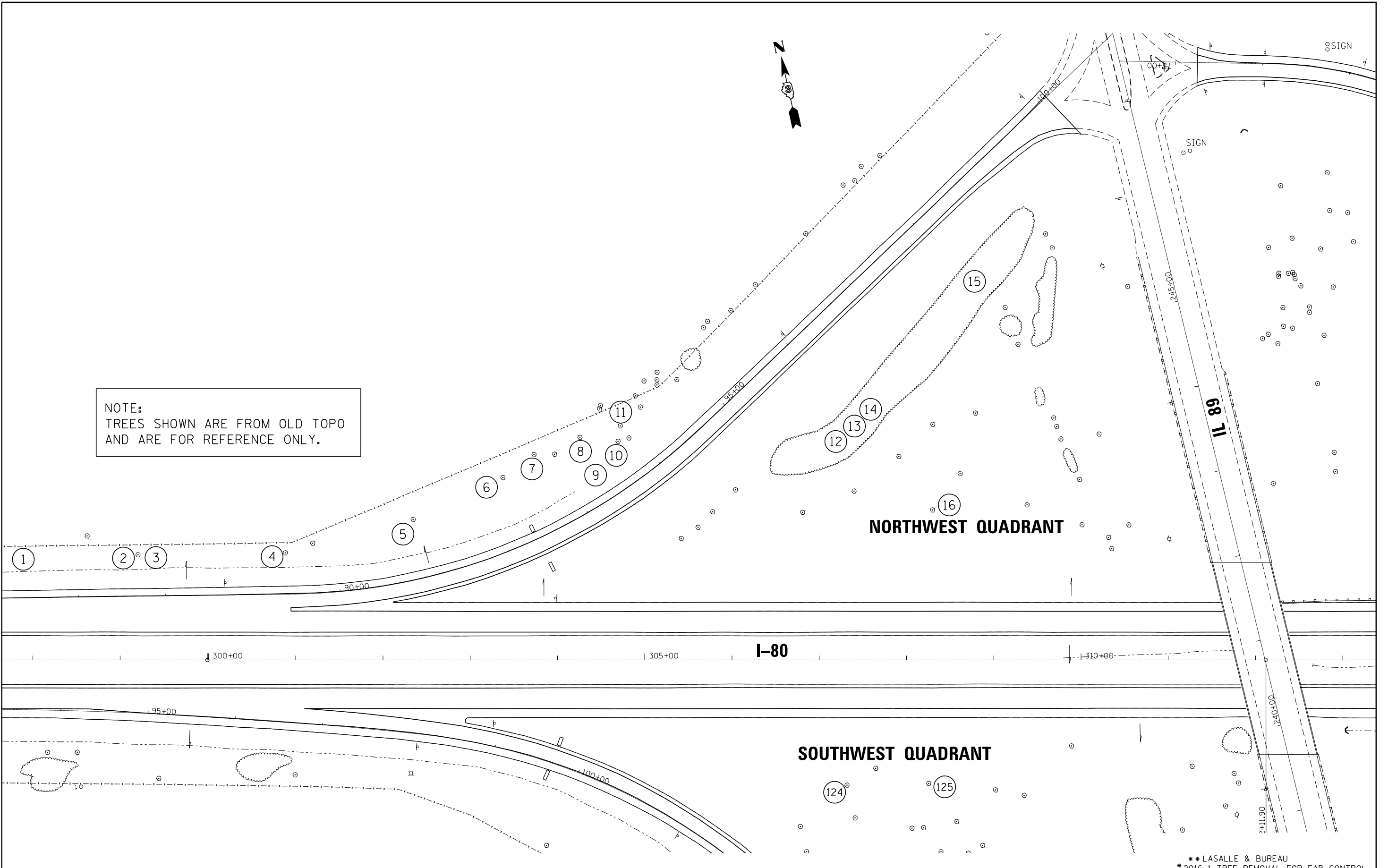
SCALE: SHEET OF SHEETS STA. TO STA.

F.A.I. RTE.	SECTION	TOTAL SHEETS	SHEET NO.
80/251	*	**	18 8
CONTRACT NO. 66F02			
ILLINOIS FED. AID PROJECT			

** LASALLE & BUREAU
*2016-1 TREE REMOVAL FOR EAB CONTROL



NOTE:
TREES SHOWN ARE FROM OLD TOPO
AND ARE FOR REFERENCE ONLY.



** LASALLE & BUREAU
* 2016-1 TREE REMOVAL FOR EAB CONTROL

FILE NAME =	USER NAME = lukkaridp	DESIGNED -	REVISED -
p:\11084EBID\INTEG\illinois.gov\PWIDOT\Documents\DOT Offices\District 3\Projects\0366\DRAWN\0366F02-sht-details.dgn		CHECKED -	REVISED -
		DATE -	REVISED -
Default	PLOT DATE = 10/13/2015		

**STATE OF ILLINOIS
DEPARTMENT OF TRANSPORTATION**

**I-80 AND IL 89
LADD INTERCHANGE (NW QUAD)**

SCALE: SHEET OF SHEETS STA. TO STA.

F.A.I. RTE.	SECTION	COUNTY	TOTAL SHEETS	SHEET NO.
80/251	*	**	18	9
CONTRACT NO. 66F02				
[ILLINOIS] FED. AID PROJECT				

* AREA OF TREE REMOVAL
TREES 26 THRU 123

* THIS AREA HAS APPROX. 98 TREES TO BE REMOVED.
SEE THE TREE REMOVAL SCHEDULE FOR THE LADD INTERCHANGE.

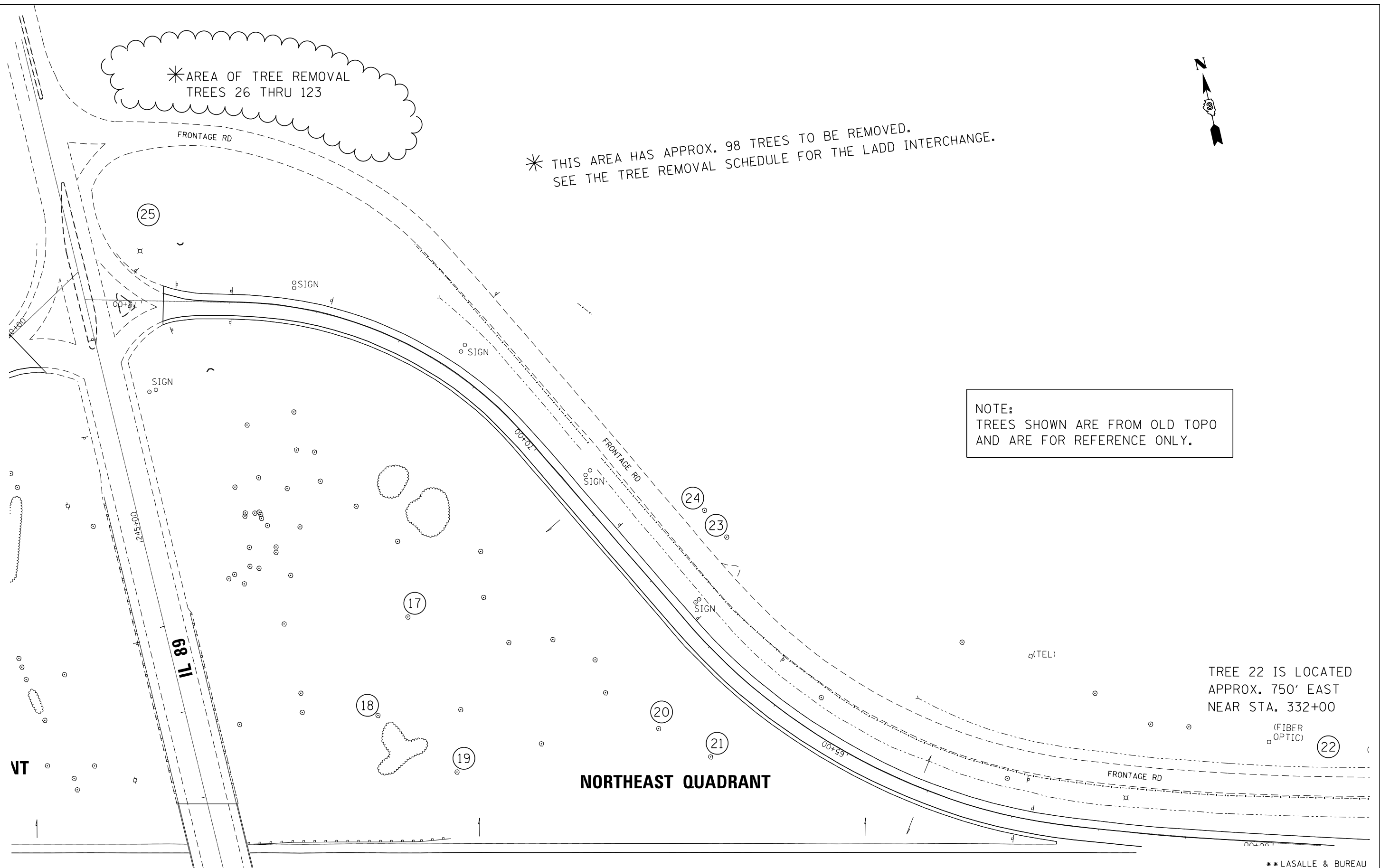


NOTE:
TREES SHOWN ARE FROM OLD TOPO
AND ARE FOR REFERENCE ONLY.

TREE 22 IS LOCATED
APPROX. 750' EAST
NEAR STA. 332+00

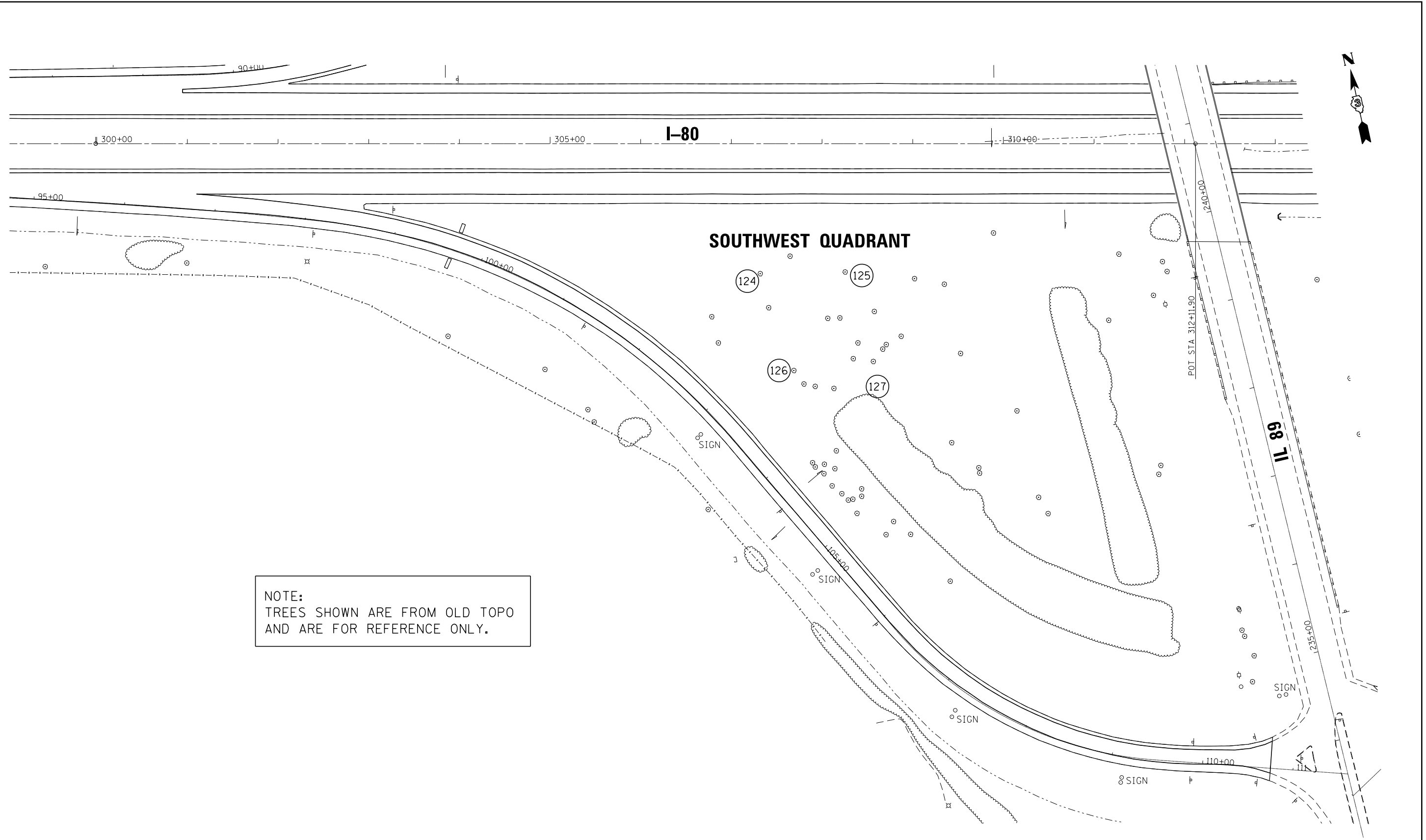
(FIBER
OPTIC)

NORTHEAST QUADRANT



** LASALLE & BUREAU
* 2016-1 TREE REMOVAL FOR EAB CONTROL

FILE NAME =	USER NAME = lukkaridp	DESIGNED -	REVISED -	STATE OF ILLINOIS DEPARTMENT OF TRANSPORTATION	I-80 AND IL 89 LADD INTERCHANGE (NE QUAD)			F.A.I. RTE.	SECTION	COUNTY	TOTAL SHEETS	SHEET NO.
pw:\IL084EBIDINTEG.illinois.gov\PID001\Documents\IDOT Offices\District 3\Projects\03666\DRAWINGData\B366F02-sht-details.dgn		CHECKED -	REVISED -					80/251	*	**	18	10
Default	PLOT SCALE = 103.8897' / in.	DATE -	REVISED -					CONTRACT NO. 66F02			ILLINOIS FED. AID PROJECT	
	PLOT DATE = 10/13/2015							SCALE:	SHEET	OF	SHEETS	STA.



NOTE:
TREES SHOWN ARE FROM OLD TOPO
AND ARE FOR REFERENCE ONLY.

** LASALLE & BUREAU
* 2016-1 TREE REMOVAL FOR EAB CONTROL

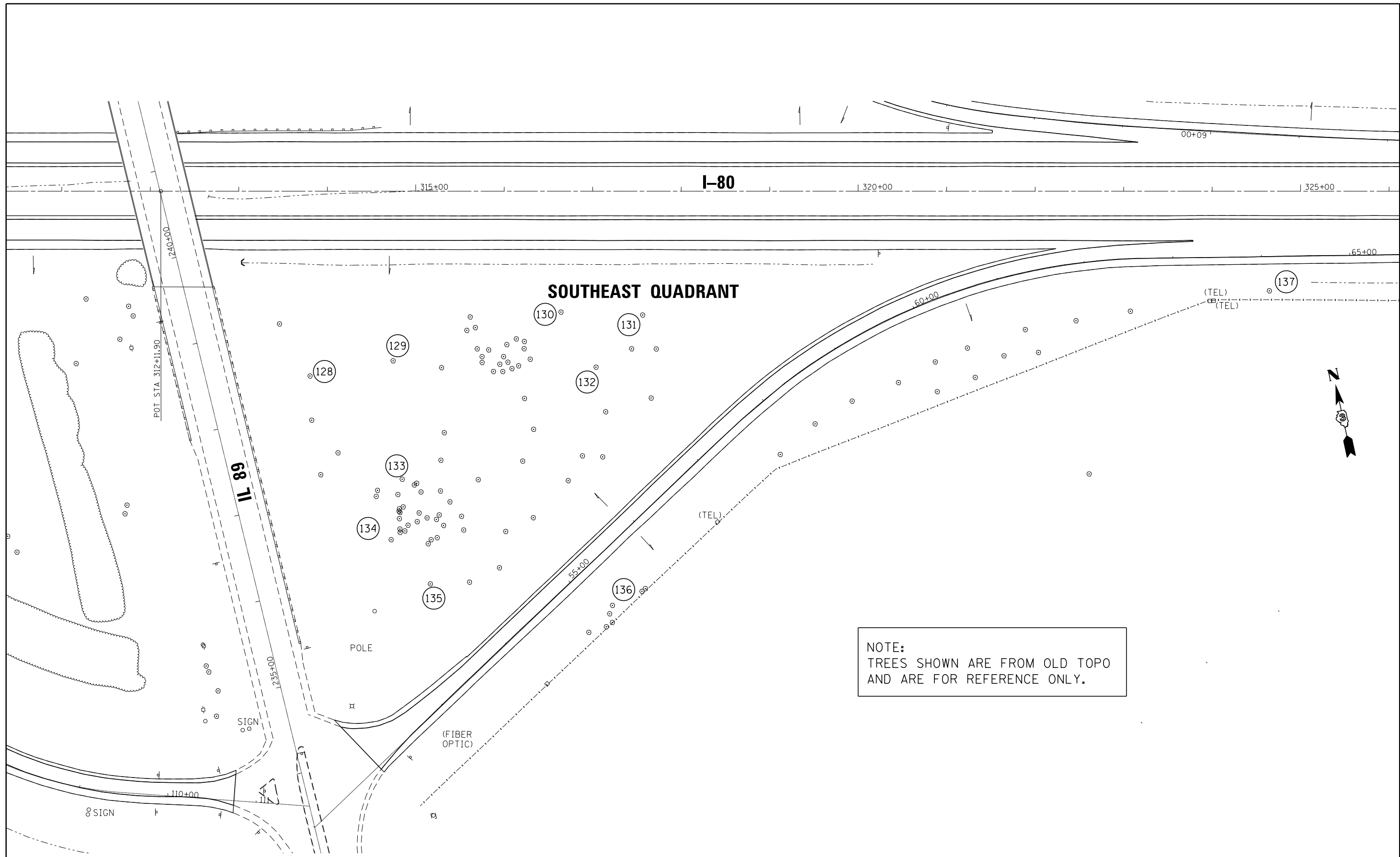
FILE NAME =	USER NAME = jukkaridp	DESIGNED -	REVISED -
pwt\IL084EBIDINTEG\Illinois.gov\PIWIDOT\Documents\IDOT Offices\District 3\Projects\0366\DRAWING\0366F02-sht-details.dgn		CHECKED -	REVISED -
Default	PLOT SCALE = 103.8897' / in.	DATE -	REVISED -
	PLOT DATE = 10/13/2015		

STATE OF ILLINOIS
DEPARTMENT OF TRANSPORTATION

I-80 AND IL 89
LADD INTERCHANGE (SW QUAD)

SCALE: SHEET OF SHEETS STA. TO STA.

F.A.I. RTE.	SECTION	COUNTY	TOTAL SHEETS	SHEET NO.
80/251	*	**	18	11
CONTRACT NO. 66F02				
ILLINOIS FED. AID PROJECT				



SOUTHEAST QUADRANT

NOTE:
TREES SHOWN ARE FROM OLD TOPO
AND ARE FOR REFERENCE ONLY.

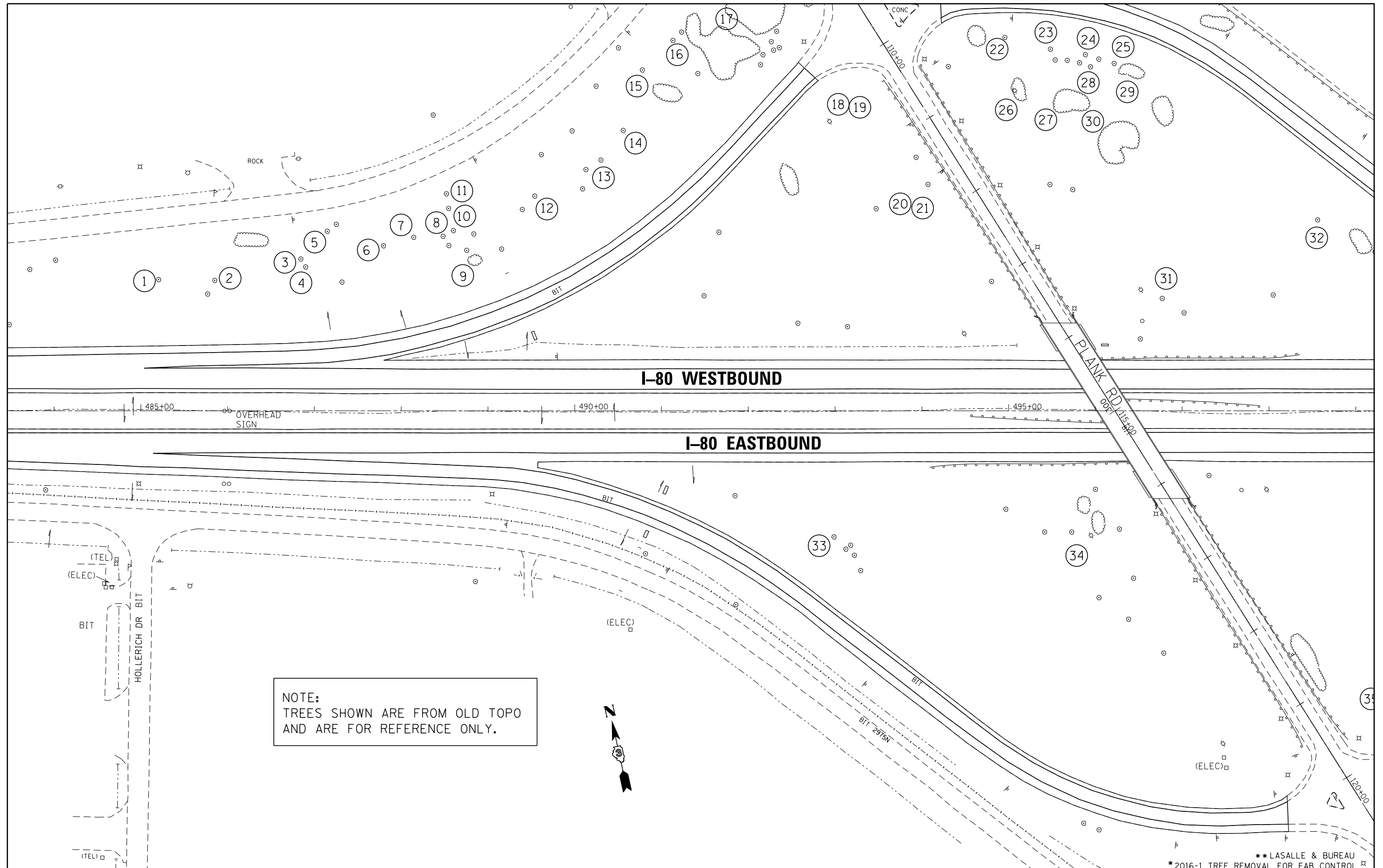
FILE NAME =	USER NAME = lukkaridp	DESIGNED -	REVISED -
pw:\IL084EBID\INTEG.illinois.gov\PI\DOT\Documents\IDOT Offices\District 3\Projects\03666\DRAWNData\B366F02-shr-details.dgn		CHECKED -	REVISED -
		DATE -	REVISED -
Default	PLOT DATE = 10/13/2015		

**STATE OF ILLINOIS
DEPARTMENT OF TRANSPORTATION**

**I-80 AND IL 89
LADD INTERCHANGE (SE QUAD)**

F.A.I. RTE.	SECTION	COUNTY	TOTAL SHEETS	SHEET NO.
80/251	*	**	18	12
CONTRACT NO. 66F02			ILLINOIS FED. AID PROJECT	

** LASALLE & BUREAU
* 2016-1 TREE REMOVAL FOR EAB CONTROL



NOTE:
TREES SHOWN ARE FROM OLD TOPO
AND ARE FOR REFERENCE ONLY.

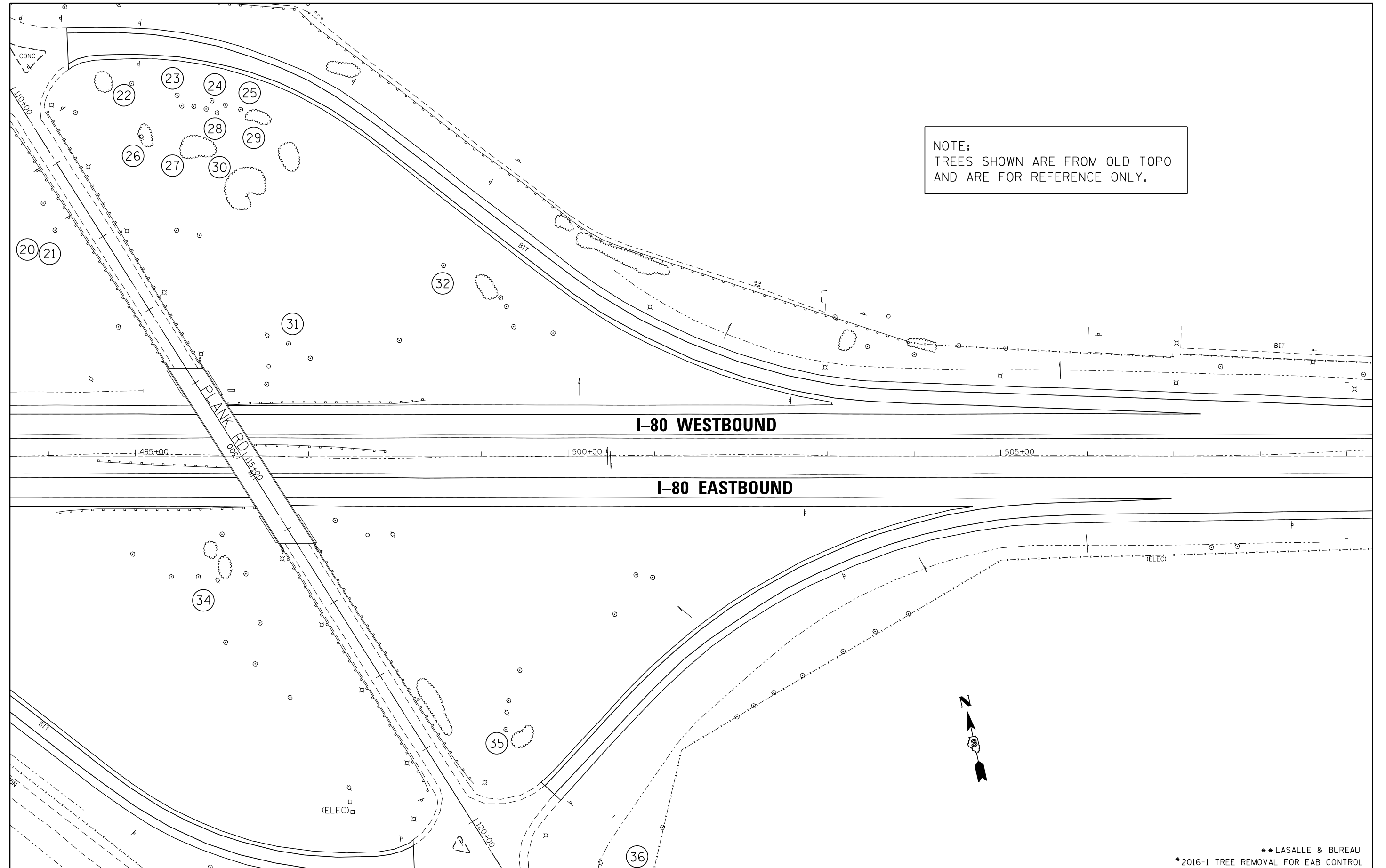


FILE NAME =	USER NAME = lukkeridp	DESIGNED -	REVISED -
p:\11084EBIDINTEG\illinois.gov\PIDOT\Documents\DOT Offices\District 3\Projects\0366\DRAWING\0366F02-sht-details.dgn		CHECKED -	REVISED -
Default	PLOT DATE = 10/13/2015	DATE -	REVISED -

**STATE OF ILLINOIS
DEPARTMENT OF TRANSPORTATION**

I-80 AND PLANK ROAD INTERCHANGE				
SCALE:	SHEET	OF	SHEETS	STA. TO STA.

** LASALLE & BUREAU				
* 2016-1 TREE REMOVAL FOR EAB CONTROL *				
F.A.I. RTE.	SECTION	COUNTY	TOTAL SHEETS	SHEET NO.
80/251	*	**	18	13
			CONTRACT NO. 66F02	
ILLINOIS FED. AID PROJECT				



NOTE:
TREES SHOWN ARE FROM OLD TOPO
AND ARE FOR REFERENCE ONLY.

I-80 WESTBOUND

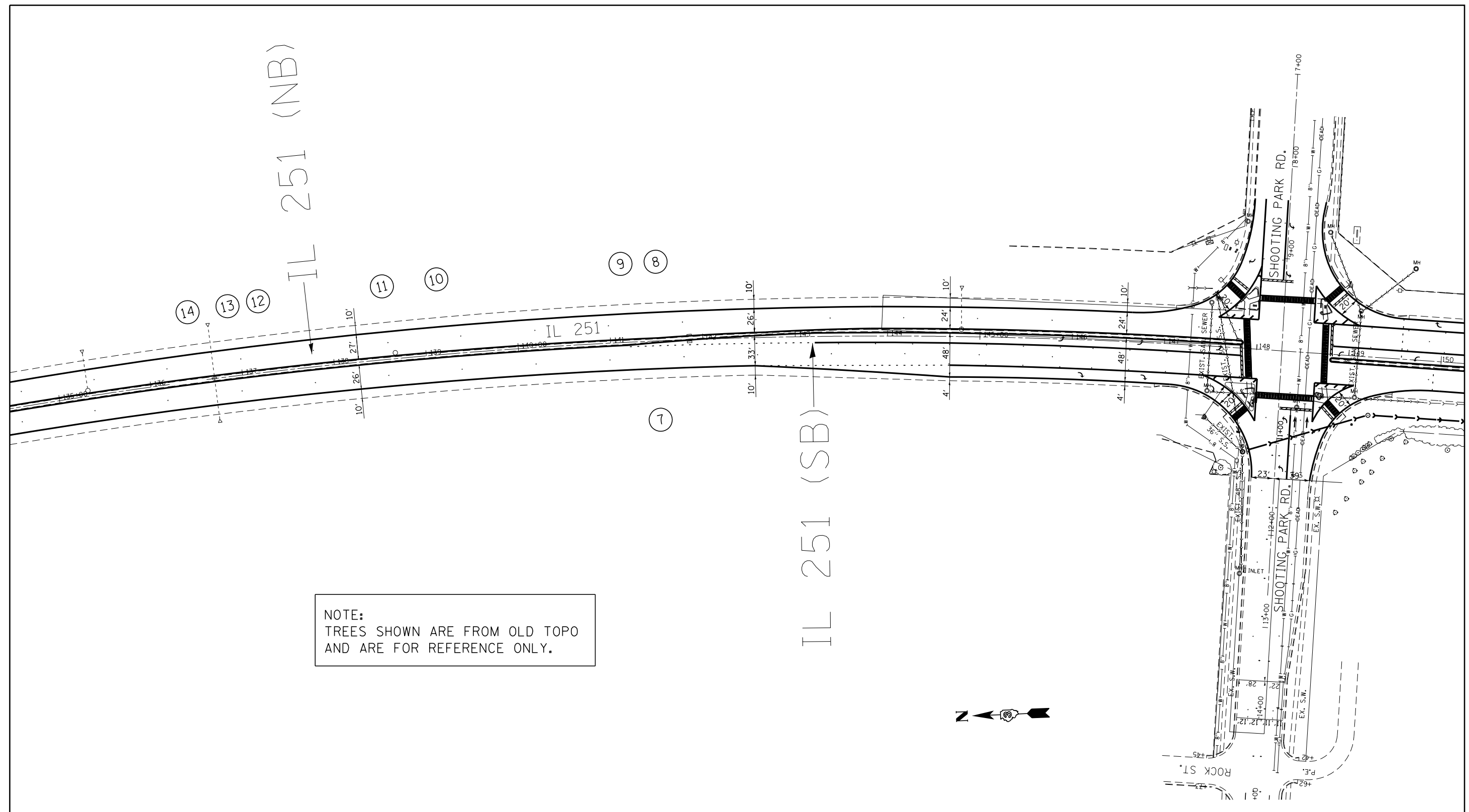
I-80 EASTBOUND

PLANK RD



FILE NAME = p:\IL084EBIDINTEG\Illinois.gov\PIDOT\Documents\IDOT Offices\District 3\Projects\0366\DRAWING\0366F02-sht-details.dgn	USER NAME = lukkaridp	DESIGNED -	REVISED -	STATE OF ILLINOIS DEPARTMENT OF TRANSPORTATION	I-80 AND PLANK ROAD INTERCHANGE	F.A.I. RTE. 80/251	SECTION *	COUNTY **	TOTAL SHEETS 18	SHEET NO. 14
PLOT SCALE = 1/4" = 100'	CHECKED -	REVISOR -	REVISOR -			CONTRACT NO. 66F02				
Default	PLOT DATE = 10/13/2015	DATE -	REVISOR -			ILLINOIS FED. AID PROJECT				
SCALE:		SHEET OF SHEETS				STA. TO STA.				

** LASALLE & BUREAU
* 2016-1 TREE REMOVAL FOR EAB CONTROL



NOTE:
TREES SHOWN ARE FROM OLD TOPO
AND ARE FOR REFERENCE ONLY.

**LASALLE & BUREAU
* 2016-1 TREE REMOVAL FOR EAB CONTROL

FILE NAME =	USER NAME = lukkaridp	DESIGNED -	REVISED -
p:\1\IL084EBID\INTEG\Illinois.gov\PW\DOT\Documents\DOT Offices\District 3\Projects\03666\Drawings\03666F02-sht-details.dgn		REVISION	REVISED -
Default	PLOT SCALE = 104.4336' / 1in.	CHECKED -	REVISED -
	PLOT DATE = 10/13/2015	DATE -	REVISED -

**STATE OF ILLINOIS
DEPARTMENT OF TRANSPORTATION**

IL 251 MIDTOWN ROAD TO SHOOTING PARK ROAD			
SCALE:	SHEET	OF	SHEETS
	STA.	TO	STA.

F.A.I. RTE. 80/251	SECTION *	COUNTY **	TOTAL SHEETS 18	SHEET NO. 17
CONTRACT NO. 66F02				ILLINOIS FED. AID PROJECT

FOR INFORMATION ONLY

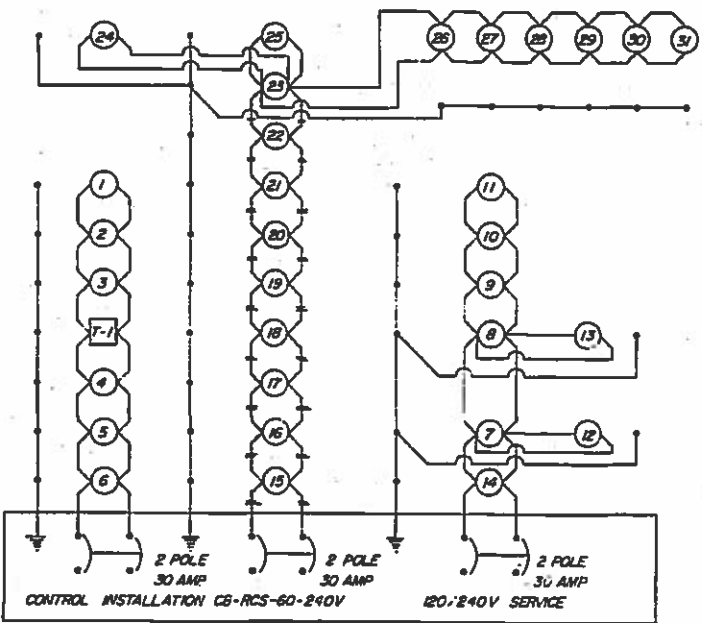
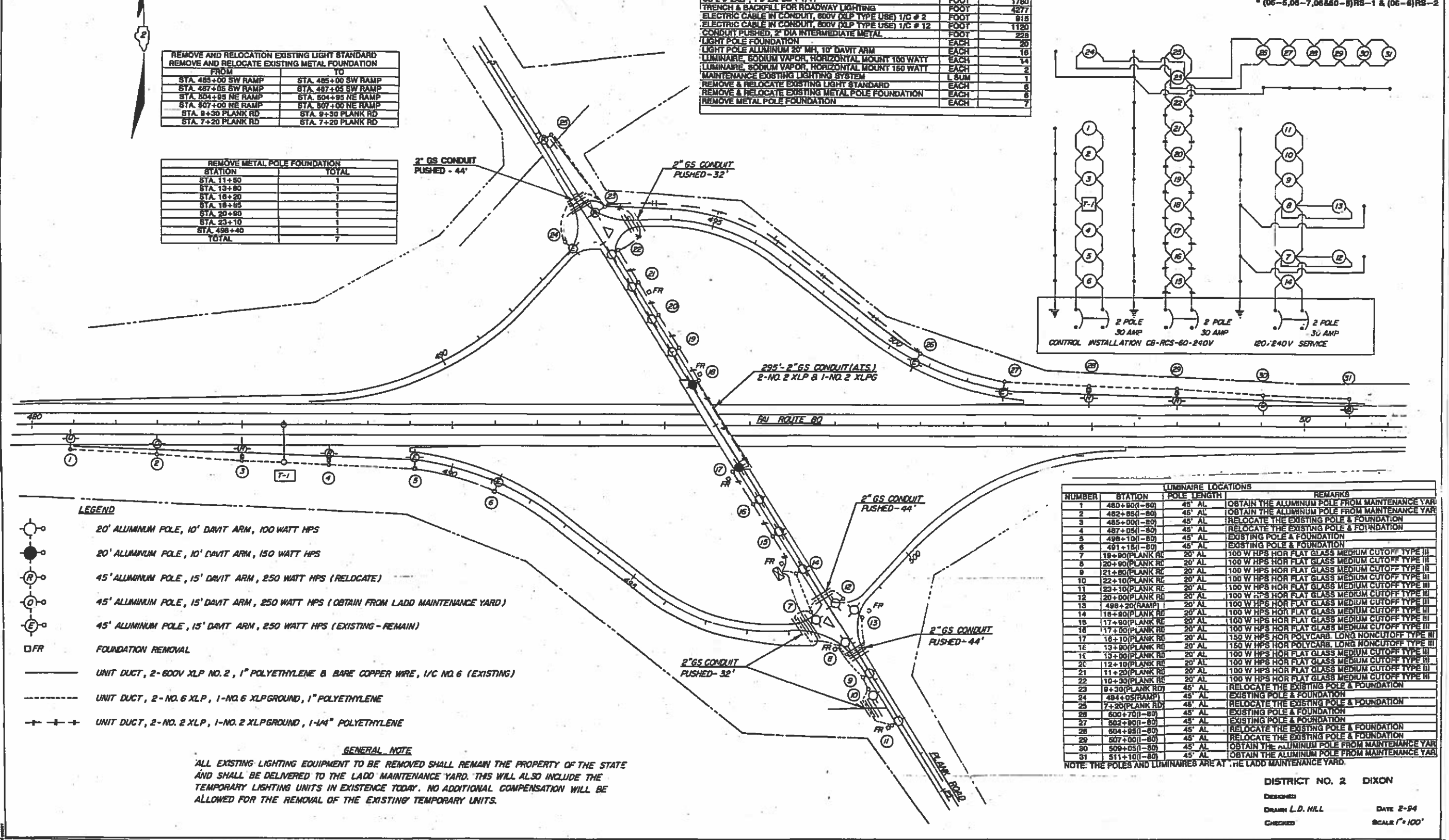
REMOVE AND RELOCATION EXISTING LIGHT STANDARD REMOVE AND RELOCATE EXISTING METAL FOUNDATION	
FROM	TO
STA. 485+00 SW RAMP	STA. 485+00 SW RAMP
STA. 487+05 SW RAMP	STA. 487+05 SW RAMP
STA. 504+95 NE RAMP	STA. 504+95 NE RAMP
STA. 507+00 NE RAMP	STA. 507+00 NE RAMP
STA. 9+30 PLANK RD	STA. 9+30 PLANK RD
STA. 7+20 PLANK RD	STA. 7+20 PLANK RD

REMOVE METAL POLE FOUNDATION	
STATION	TOTAL
STA. 11+50	1
STA. 13+80	1
STA. 18+20	1
STA. 18+55	1
STA. 20+80	1
STA. 23+10	1
STA. 498+40	1
TOTAL	7

TABULATION OF QUANTITIES		
DESCRIPTION	UNIT	TOTAL
UD 2 # 6XLP, 1 # 6XLP 1 P	FOOT	2595
UD 2 # 2XLP, 1 # 2XLP 1 1/4 P	FOOT	1780
TRENCH & BACKFILL FOR ROADWAY LIGHTING	FOOT	4277
ELECTRIC CABLE IN CONDUIT, 600V (XLP TYPE USE) 1/C # 2	FOOT	915
ELECTRIC CABLE IN CONDUIT, 600V (XLP TYPE USE) 1/C # 12	FOOT	1120
CONDUIT PUSHED, 2" DIA INTERMEDIATE METAL	FOOT	228
LIGHT POLE FOUNDATION	EACH	20
LIGHT POLE ALUMINUM 20' MH, 10' DAVIT ARM	EACH	16
LUMINAIRE, SODIUM VAPOR, HORIZONTAL MOUNT 100 WATT	EACH	14
LUMINAIRE, SODIUM VAPOR, HORIZONTAL MOUNT 150 WATT	EACH	2
MAINTENANCE EXISTING LIGHTING SYSTEM	L SUM	1
REMOVE & RELOCATE EXISTING LIGHT STANDARD	EACH	6
REMOVE & RELOCATE EXISTING METAL POLE FOUNDATION	EACH	6
REMOVE METAL POLE FOUNDATION	EACH	7

CONTRACT NO.	SECTION	COUNTY	TOTAL SHEETS
FAJ 80	BUREAU & LASALLE	94	54

PROJECT: (06-5,06-7,06860-5)RS-1 & (06-6)RS-2



LUMINAIRE LOCATIONS			
NUMBER	STATION	POLE LENGTH	REMARKS
1	480+80(1-80)	45' AL	OBTAIN THE ALUMINUM POLE FROM MAINTENANCE YARD
2	482+85(1-80)	45' AL	OBTAIN THE ALUMINUM POLE FROM MAINTENANCE YARD
3	485+00(1-80)	45' AL	RELOCATE THE EXISTING POLE & FOUNDATION
4	487+05(1-80)	45' AL	RELOCATE THE EXISTING POLE & FOUNDATION
5	498+10(1-80)	45' AL	EXISTING POLE & FOUNDATION
6	491+15(1-80)	20' AL	100 W HPS HOR FLAT GLASS MEDIUM CUTOFF TYPE III
7	20+90(PLANK RD)	20' AL	100 W HPS HOR FLAT GLASS MEDIUM CUTOFF TYPE III
8	21+80(PLANK RD)	20' AL	100 W HPS HOR FLAT GLASS MEDIUM CUTOFF TYPE III
9	22+10(PLANK RD)	20' AL	100 W HPS HOR FLAT GLASS MEDIUM CUTOFF TYPE III
10	22+10(PLANK RD)	20' AL	100 W HPS HOR FLAT GLASS MEDIUM CUTOFF TYPE III
11	23+10(PLANK RD)	20' AL	100 W HPS HOR FLAT GLASS MEDIUM CUTOFF TYPE III
12	20+90(PLANK RD)	20' AL	100 W HPS HOR FLAT GLASS MEDIUM CUTOFF TYPE III
13	498+20(RAMP)	20' AL	100 W HPS HOR FLAT GLASS MEDIUM CUTOFF TYPE III
14	18+80(PLANK RD)	20' AL	100 W HPS HOR FLAT GLASS MEDIUM CUTOFF TYPE III
15	17+90(PLANK RD)	20' AL	100 W HPS HOR FLAT GLASS MEDIUM CUTOFF TYPE III
16	17+90(PLANK RD)	20' AL	100 W HPS HOR FLAT GLASS MEDIUM CUTOFF TYPE III
17	16+10(PLANK RD)	20' AL	150 W HPS HOR POLYCARB. LONG NONCUTOFF TYPE III
1E	13+90(PLANK RD)	20' AL	150 W HPS HOR POLYCARB. LONG NONCUTOFF TYPE III
1E	13+90(PLANK RD)	20' AL	100 W HPS HOR FLAT GLASS MEDIUM CUTOFF TYPE III
20	12+10(PLANK RD)	20' AL	100 W HPS HOR FLAT GLASS MEDIUM CUTOFF TYPE III
21	11+20(PLANK RD)	20' AL	100 W HPS HOR FLAT GLASS MEDIUM CUTOFF TYPE III
22	10+30(PLANK RD)	20' AL	100 W HPS HOR FLAT GLASS MEDIUM CUTOFF TYPE III
23	9+30(PLANK RD)	45' AL	RELOCATE THE EXISTING POLE & FOUNDATION
24	484+05(RAMP)	45' AL	EXISTING POLE & FOUNDATION
25	7+20(PLANK RD)	45' AL	RELOCATE THE EXISTING POLE & FOUNDATION
26	600+70(1-80)	45' AL	EXISTING POLE & FOUNDATION
27	602+80(1-80)	45' AL	EXISTING POLE & FOUNDATION
28	604+95(1-80)	45' AL	RELOCATE THE EXISTING POLE & FOUNDATION
29	607+00(1-80)	45' AL	RELOCATE THE EXISTING POLE & FOUNDATION
30	509+05(1-80)	45' AL	OBTAIN THE ALUMINUM POLE FROM MAINTENANCE YARD
31	511+10(1-80)	45' AL	OBTAIN THE ALUMINUM POLE FROM MAINTENANCE YARD

NOTE: THE POLES AND LUMINAIRES ARE AT THE LADD MAINTENANCE YARD.

- LEGEND**
- 20' ALUMINUM POLE, 10' DAVIT ARM, 100 WATT HPS
 - 20' ALUMINUM POLE, 10' DAVIT ARM, 150 WATT HPS
 - 45' ALUMINUM POLE, 15' DAVIT ARM, 250 WATT HPS (RELOCATE)
 - 45' ALUMINUM POLE, 15' DAVIT ARM, 250 WATT HPS (OBTAIN FROM LADD MAINTENANCE YARD)
 - 45' ALUMINUM POLE, 15' DAVIT ARM, 250 WATT HPS (EXISTING - REMAIN)
 - FOUNDATION REMOVAL
 -
 -
 -

GENERAL NOTE
ALL EXISTING LIGHTING EQUIPMENT TO BE REMOVED SHALL REMAIN THE PROPERTY OF THE STATE AND SHALL BE DELIVERED TO THE LADD MAINTENANCE YARD. THIS WILL ALSO INCLUDE THE TEMPORARY LIGHTING UNITS IN EXISTENCE TODAY. NO ADDITIONAL COMPENSATION WILL BE ALLOWED FOR THE REMOVAL OF THE EXISTING TEMPORARY UNITS.

DISTRICT NO. 2 DIXON
DESIGNED
DRAWN L.D. HILL DATE 2-94
CHECKED SCALE 1" = 100'

PLANK ROAD LIGHTING PLANS LASALLE & BUREAU
2016-1 TREE REMOVAL FOR EAB CONTROL

FILE NAME p:\11\0846510\11\EC-11\map\p\1001.Dwg	USER NAME Schwartzberg	DESIGNED 10/15/2015	REVISED 10/15/2015	STATE OF ILLINOIS DEPARTMENT OF TRANSPORTATION	PLANK ROAD INTERCHANGE EXISTING LIGHTING PLANS	F.A.I. RTE. 80/251	SECTION	COUNTY	TOTAL SHEETS	SHEET NO.
Default	10/15/2015	10/15/2015	10/15/2015	SCALE: SHEET OF SHEETS STA. TO STA.	ILLINOIS FED. AID PROJECT	18	18	CONTRACT NO. 66F02		