

STATE OF ILLINOIS
DEPARTMENT OF TRANSPORTATION
DIVISION OF HIGHWAYS

**PROPOSED
HIGHWAY PLANS**

FAI 70 (I-70) & FAI 72 (I-72)
SECTION D7 ASH BORER CONTROL 2016

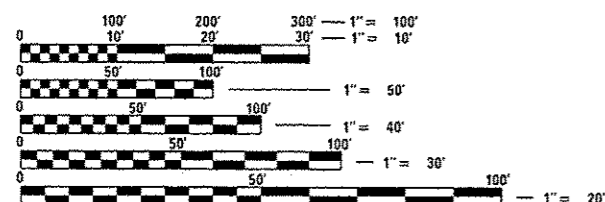
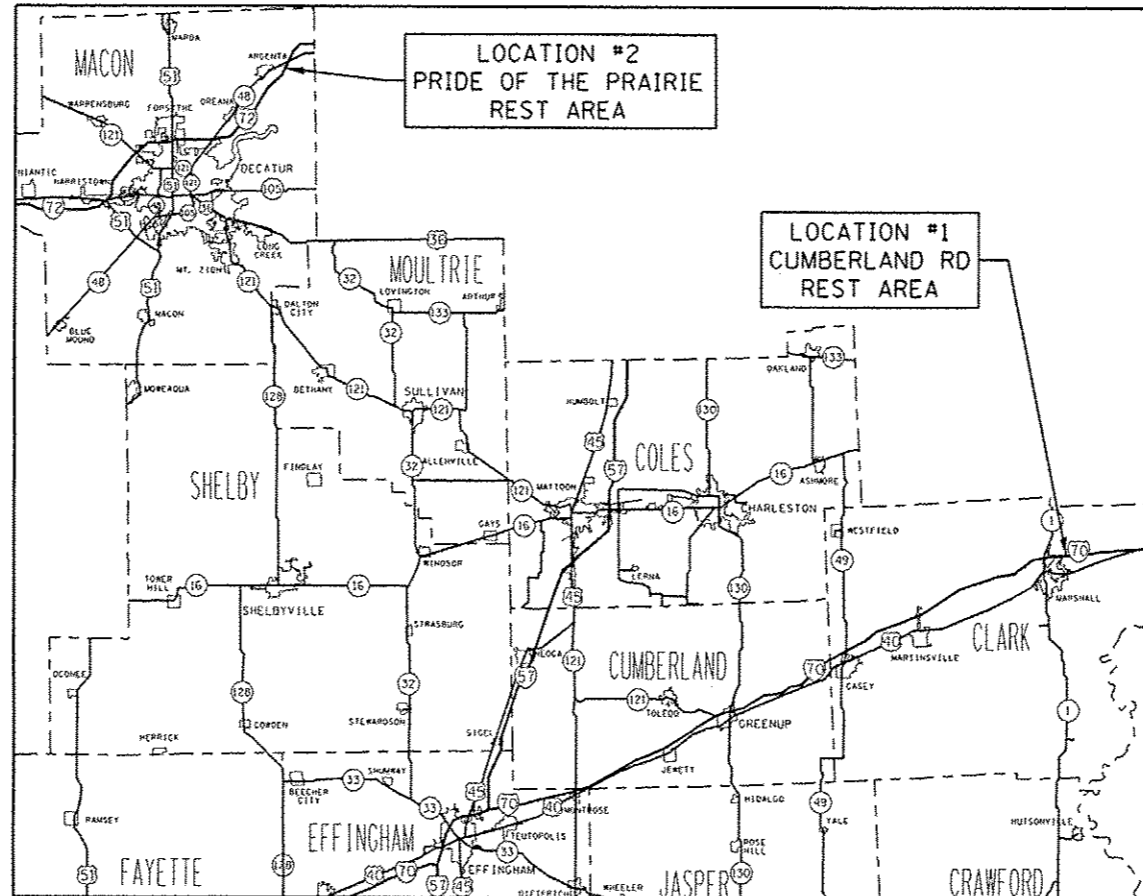
TREE REMOVAL
CLARK & MACON COUNTIES

C-97-005-16

FOR INDEX OF SHEETS, SEE SHEET NO. 2

F.A. RTE.	SECTION	COUNTY	TOTAL SHEETS	SHEET NO.
		ILLINOIS	6	1
CONTRACT NO. 74740			*D7 ASH BORER CONTROL 2016	

D-97-003-16



FULL SIZE PLANS HAVE BEEN PREPARED USING STANDARD ENGINEERING SCALES. REDUCED SIZED PLANS WILL NOT CONFORM TO STANDARD SCALES. IN MAKING MEASUREMENTS ON REDUCED PLANS, THE ABOVE SCALES MAY BE USED.

J.U.L.I.E.
JOINT UTILITY LOCATION INFORMATION FOR EXCAVATION
1-800-892-0123
OR 811

PROJECT ENGINEER: MARK DAUGHERTY
PROJECT MANAGER:
PHONE: (217) 342-8341
CONTRACT NO. 74740

STATE OF ILLINOIS
DEPARTMENT OF TRANSPORTATION
DIVISION OF HIGHWAYS

SUBMITTED October 7, 2015
Ron L. Orndorff
DEPUTY DIRECTOR OF HIGHWAYS, REGION ENGINEER

Dec 4, 2015
John D. Baranzelli, PE, PE
ENGINEER OF DESIGN AND ENVIRONMENT

Dec 4, 2015
Omer Osman, PE, PE
DIRECTOR OF HIGHWAYS, CHIEF ENGINEER

PRINTED BY THE AUTHORITY
OF THE STATE OF ILLINOIS

GENERAL NOTES

THE WORK INCLUDED IN THIS CONTRACT CONSISTS OF TREE REMOVAL, TREE PLANTING, AND SEEDING.

ALL TREE REMOVAL AND TREE PLANTING WILL BE WITHIN THE LIMITS OF THE REST AREAS SHOWN ON THE PLANS. EXACT LOCATIONS WILL BE DETERMINED BY DISTRICT 7 OPERATIONS.

REST AREAS SHALL BE CLOSED WHILE WORK IS BEING PERFORMED. AT THE PRIDE OF THE PRAIRIE REST AREA, CLOSURE OF BOTH EB AND WB REST AREAS AT THE SAME TIME IS NOT ALLOWED.

TREES TO BE REMOVED AND PLANTED ARE IN MOWED AREAS AROUND REST AREAS.

INDEX OF SHEETS

SHEET NO	TITLE
1	COVER SHEET
2	GENERAL NOTES, INDEX OF SHEETS, LIST OF STANDARDS
3	SUMMARY OF QUANTITIES
4-5	LOCATION MAPS, SCHEDULES
6	PLANTING DETAILS

THE FOLLOWING STANDARDS ARE A PART OF THESE PLANS AND ARE INCLUDED FOLLOWING THE LAST NUMBERED SHEET OF THE PLANS.

000001-06	STANDARD SYMBOLS, ABBREVIATIONS, AND PATTERNS
001006	DECIMAL OF AN INCH AND OF A FOOT
701451-03	RAMP CLOSURE FREEWAY/EXPRESSWAY
701901-04	TRAFFIC CONTROL DEVICES

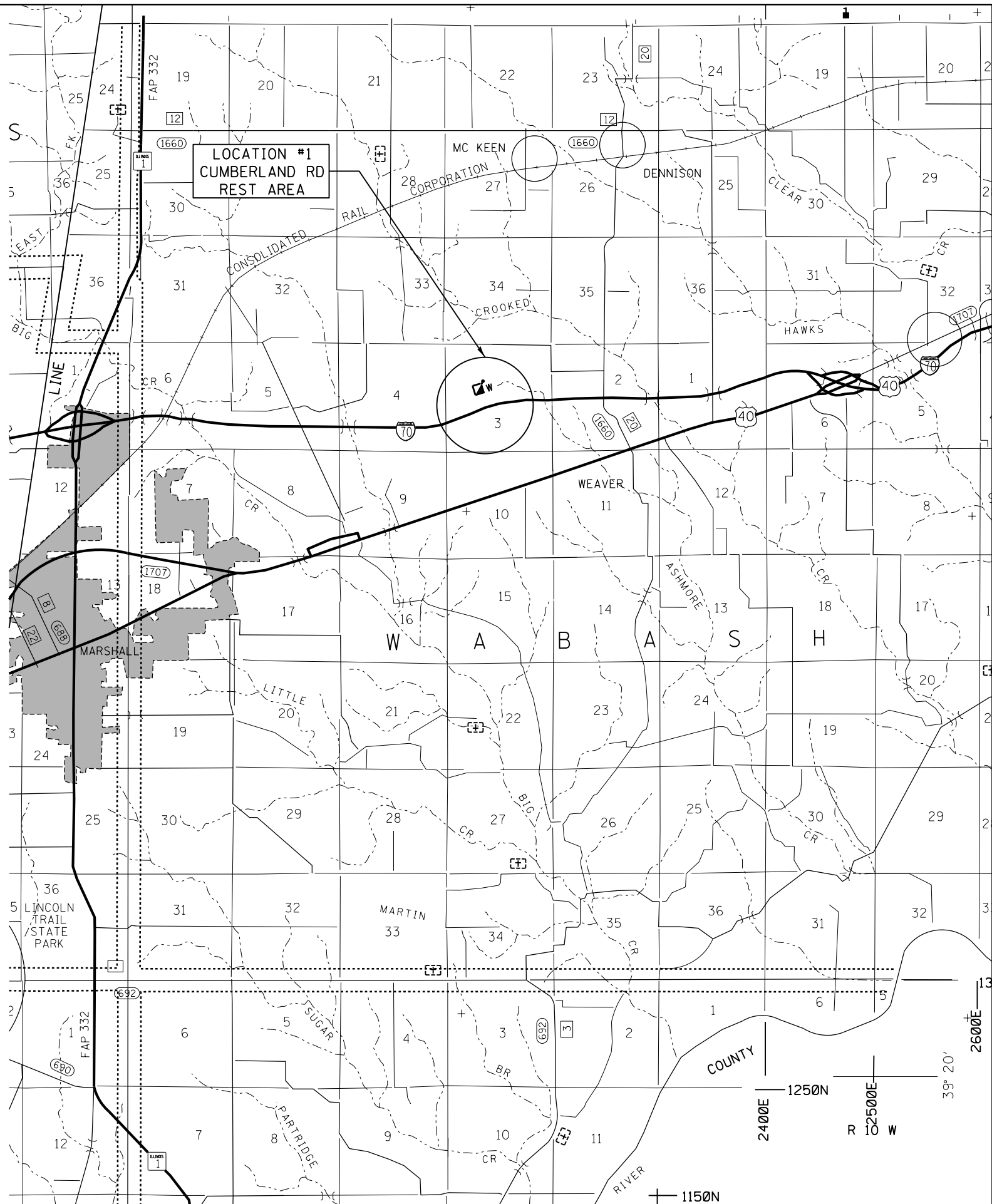
FILE NAME =	USER NAME = ssoffenk	DESIGNED -	REVISED -	STATE OF ILLINOIS DEPARTMENT OF TRANSPORTATION	GENERAL NOTES & INDEX OF SHEETS	F.A. RTE.	SECTION	COUNTY	TOTAL SHEETS	SHEET NO.
pw\112884EB10INTEG.illinois.gov\PIWIDOT\Docu	uments\DOT Offices\District 7\Projects\747	ORANGE\CAD\shots\0774740-shr\gennote	REVISED -			*	VARIOUS	5	2	
	PLOT SCALE = 1/28,000 1" = 100'	CHECKED -	REVISED -			*07 ASH BORER CONTROL 2016	CONTRACT NO. 74740			
Default	PLOT DATE = 10/16/2015	DATE -	REVISED -			ILLINOIS FED. AID PROJECT				
						SCALE:	SHEET	OF	SHEETS	STA. TO STA.

PL 100

100 %
STATE

SUMMARY OF QUANTITIES			TOTAL QUANTITIES	CONSTRUCTION TYPE CODE	
CODE NO	ITEM	UNIT		0031 CLARK COUNTY	0031 MACON COUNTY
20100110	TREE REMOVAL (6 TO 15 UNITS DIAMETER)	UNIT	450	120	330
20100210	TREE REMOVAL (OVER 15 UNITS DIAMETER)	UNIT	1050	283	767
67100100	MOBILIZATION	LSUM	1	0.5	0.5
70100820	TRAFFIC CONTROL AND PROTECTION, STANDARD	LSUM	1	0.5	0.5
	701451				
A2001016	TREE, ACER RUBRUM (RED MAPLE), 2" CALIPER, BALLED AND BURLAPPED	EACH	25	6	19
A2001716	TREE, ACER SACCHARUM (SUGAR MAPLE), 2" CALIPER, BALLED AND BURLAPPED	EACH	15	4	11
A2006916	TREE, QUERCUS PALUSTRIS (PIN OAK), 2" CALIPER, BALLED AND BURLAPPED	EACH	10	3	7
A2007116	TREE, QUERCUS RUBRA (RED OAK), 2" CALIPER, BALLED AND BURLAPPED	EACH	10	3	7
B2001116	TREE, CERCIS CANADENSIS (EASTERN REDBUD), 2" CALIPER, TREE FORM, BALLED AND BURLAPPED	EACH	10	3	7

9



TREE PLANTING SCHEDULE - CLARK COUNTY - CUMBERLAND ROAD REST AREA

TYPE	UNIT	QUANTITY
TREE, ACER RUBRUM (RED MAPLE), 2" CALIPER, BALLED AND BURLAPPED	EACH	6
TREE, ACER SACCHARUM (SUGAR MAPLE), 2" CALIPER, BALLED AND BURLAPPED	EACH	4
TREE, QUERCUS PALUSTRIS (PIN OAK), 2" CALIPER, BALLED AND BURLAPPED	EACH	3
TREE, QUERCUS RUBRA (RED OAK), 2" CALIPER, BALLED AND BURLAPPED	EACH	3
TREE, CERCIS CANADENSIS (EASTERN REDBUD), 2" CALIPER, BALLED AND BURLAPPED	EACH	3
TOTAL		19

TREE REMOVAL SCHEDULE - CLARK COUNTY - CUMBERLAND ROAD REST AREA

TYPE	UNIT	QUANTITY
TREE REMOVAL (6 TO 15 UNITS DIAMETER)	UNIT	120
TREE REMOVAL (OVER 15 UNITS DIAMETER)	UNIT	283
TOTAL		403

FILE NAME =	USER NAME = steffenmk	DESIGNED -	REVISED -
pw:\IL\084EBIDINTEG\illinois.gov\PWIDOT\Documents\IDOT Offices\District 7\Projects\74740\Drawings\CAD\Sheets\0774740-sht-schedule		DRAWN -	REVISED -
Default	PLOT SCALE = 100.0000' / in.	CHECKED -	REVISED -
	PLOT DATE = 10/16/2015	DATE -	REVISED -

**STATE OF ILLINOIS
DEPARTMENT OF TRANSPORTATION**

**CLARK COUNTY
CUMBERLAND RD REST AREA**

SCALE: SHEET OF SHEETS STA. TO STA.

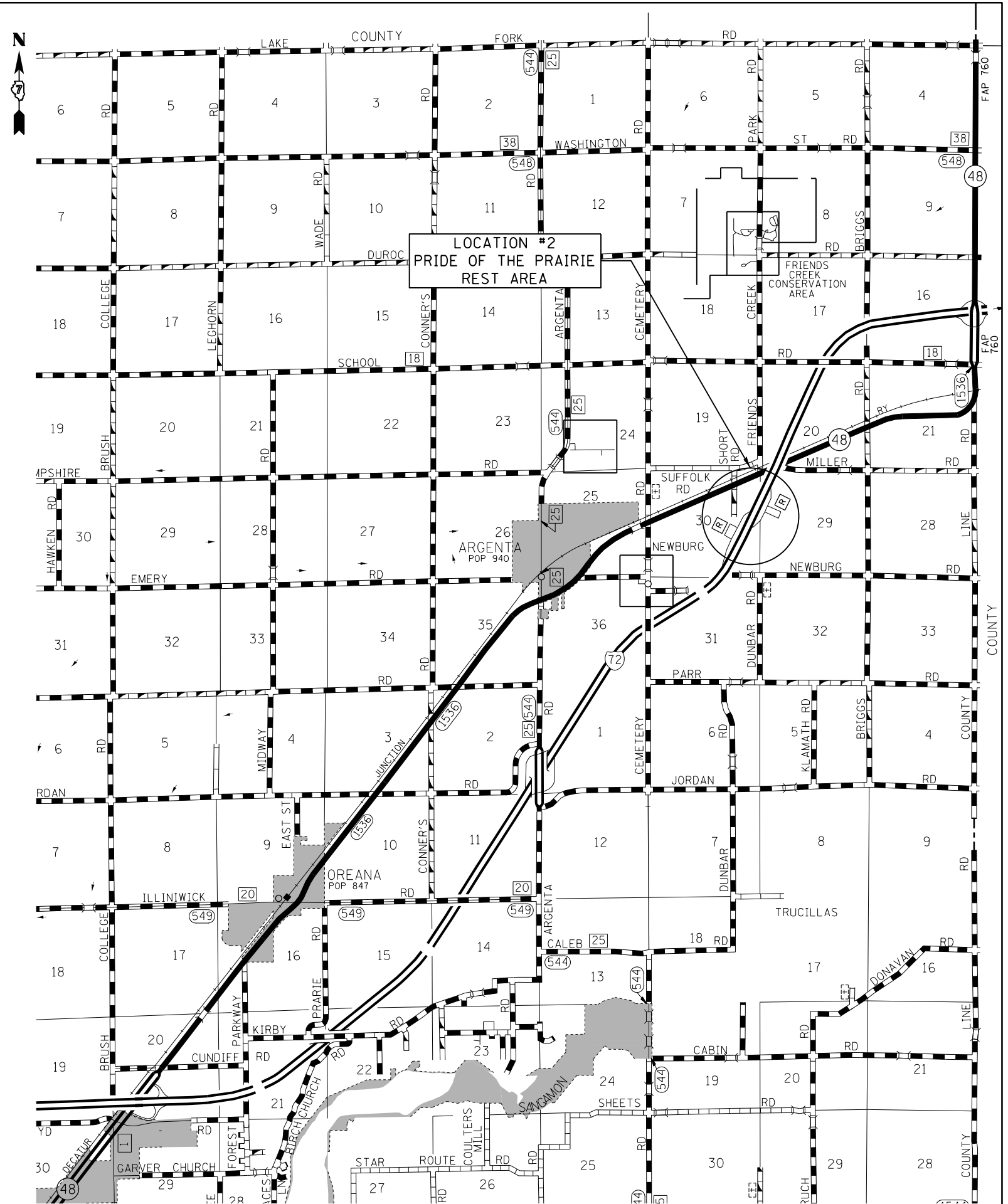
F.A. RTE.	SECTION	COUNTY	TOTAL SHEETS	SHEET NO.
		VARIOUS	6	4
*07 ASH BORER CONTROL 2016			CONTRACT NO. 74740	
ILLINOIS FED. AID PROJECT				

TREE PLANTING SCHEDULE - MACON COUNTY - PRIDE OF THE PRAIRIE REST AREA

TYPE	UNIT	QUANTITY
TREE, ACER RUBRUM (RED MAPLE), 2" CALIPER, BALLED AND BURLAPPED	EACH	19
TREE, ACER SACCHARUM (SUGAR MAPLE), 2" CALIPER, BALLED AND BURLAPPED	EACH	11
TREE, QUERCUS PALUSTRIS (PIN OAK), 2" CALIPER, BALLED AND BURLAPPED	EACH	7
TREE, QUERCUS RUBRA (RED OAK), 2" CALIPER, BALLED AND BURLAPPED	EACH	7
TREE, CERCIS CANADENSIS (EASTERN REDBUD), 2" CALIPER, BALLED AND BURLAPPED	EACH	7
TOTAL		51

TREE REMOVAL SCHEDULE - MACON COUNTY - PRIDE OF THE PRAIRIE REST AREA

TYPE	UNIT	QUANTITY
TREE REMOVAL (6 TO 15 UNITS DIAMETER)	UNIT	330
TREE REMOVAL (OVER 15 UNITS DIAMETER)	UNIT	767
TOTAL		1097



FILE NAME =	USER NAME = steffenmk	DESIGNED -	REVISED -
p:\11084EBID\INTEG.illinois.gov\PIWIDOT\Documents\IDOT Offices\District 7\Projects\74740\Drawings\CAD\Drawings\74740-sht-schedule		DRAWN -	REVISED -
Default	PLOT SCALE = 100.0000' / in.	CHECKED -	REVISED -
	PLOT DATE = 10/16/2015	DATE -	REVISED -

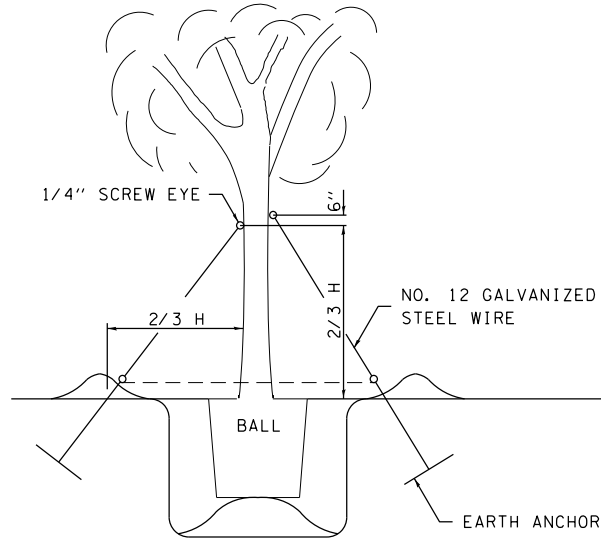
STATE OF ILLINOIS
DEPARTMENT OF TRANSPORTATION

MACON COUNTY
PRIDE OF THE PRAIRIE REST AREA

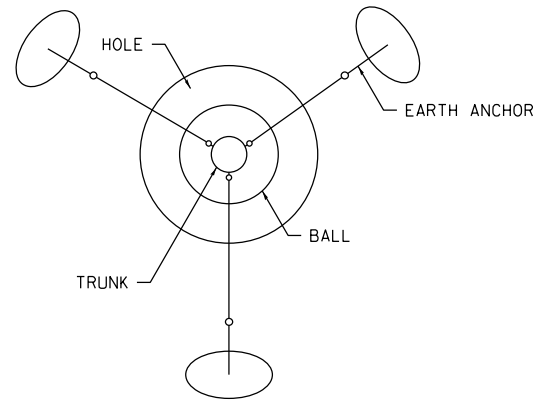
SCALE: SHEET OF SHEETS STA. TO STA.

F.A. RTE.	SECTION	COUNTY	TOTAL SHEETS	SHEET NO.
		VARIOUS	6	5
*07 ASH BORER CONTROL 2016			CONTRACT NO. 74740	
ILLINOIS FED. AID PROJECT				

SEE SECTION 253 OF THE STANDARD SPECIFICATIONS FOR ROAD AND BRIDGE CONSTRUCTION FOR INFORMATION NOT SHOWN.

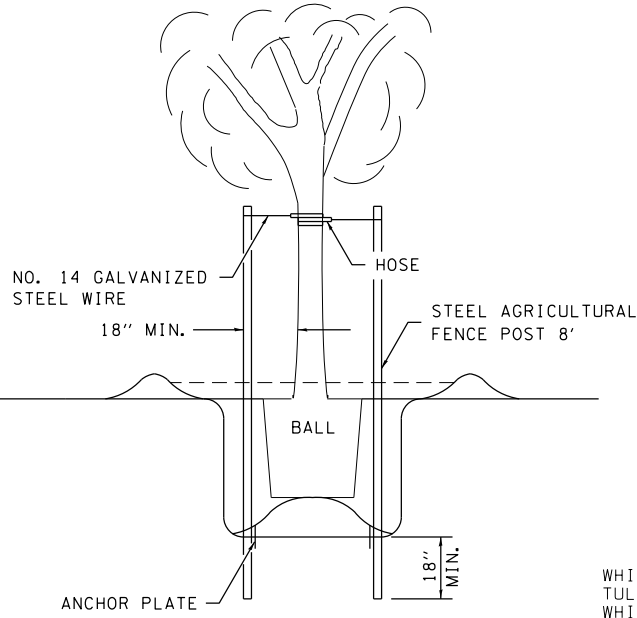


SECTION

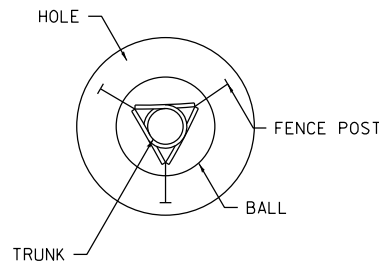


PLAN

TREES OVER 4 1/2" IN CALIPER



SECTION

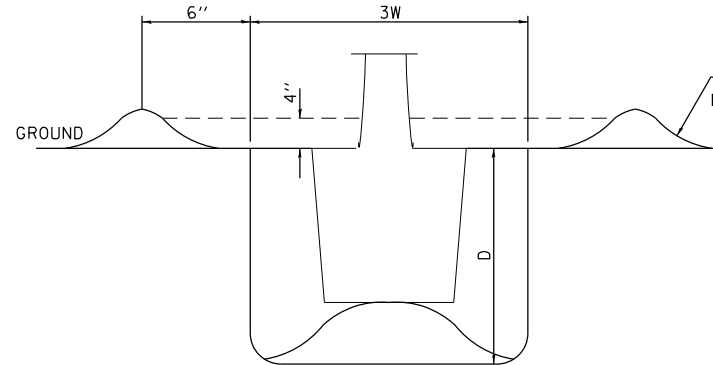


PLAN

TREES OVER 8' TALL AND 4 1/2" IN CALIPER AND ALL "A" & "D" CODED TREES.

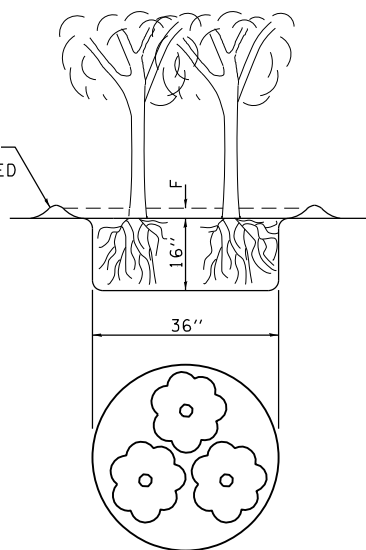
• OVER 4' TALL

BRACING DETAIL



SINGLE PLANT

PLANTING DETAIL MULCH AND WATER RING



GROUPED PLANTS

INFORMATION ONLY

COMMON NAME	LATIN NAME
WHITE PINE	Pinus strobus
TULIP POPLAR	Liriodendron tulipifera
WHITE OAK	Quercus alba
PIN OAK	Quercus palustris
RED OAK	Quercus rubra
SUGAR MAPLE	Acer saccharum
RED MAPLE	Acer Rubrum
SWEET GUM	Liquidambar styraciflua
DOGWOOD	cornus florida
ASH	Fraxinus americana (Sps.)
CRAB APPLE	Malus sps.
RIVER BIRCH	Betula nigra
WITCH HAZEL	Hamamelis virginiana
RED BUD	Cercis canadensis
BRADFORD PEAR	Pyrus calleryana bradford
SHAGBARK HICKORY	Carya ovata
PINK FLOWERING DOGWOOD	Cornus florida rubra
WHITE CRAB APPLE	Malus snowdrift
NORWAY SPRUCE	Picea abies
TALL HEDGE (SHRUB)	Rhamnus fragula "columnaris"

SPACE LIMITATIONS IN THE ABBREVIATED PAY ITEM DESCRIPTION PRECLUDED SHOWING THE SIZES, YEARS OF GROWTH, AND OTHER CHARACTERISTICS OF TREES, SHRUBS, EVERGREENS AND VINES. THEREFORE, THESE CHARACTERISTICS HAVE BEEN CODED AS SHOWN FOR EACH CATEGORY OF PLANTS.

AN EXAMPLE OF THE APPLICATION OF PREFIX AND CODE IS:

CODE NUMBER ITEM (long description - short description)
A1002008 ACER SACCHARINUM 08 - ACER SACCINUM 08

A - IN THE CODE NUMBER INDICATES THE PREFIX
08 - IN THE ITEM DESCRIPTION IS FOR THE SIZE OF TREE (IN THIS CASE 2 - 2 1/2 INCH DIAMETER)

SHADE TREES (PREFIX "A")		
CODE	SIZE INCH DIAMETER	
01	1 1/4 - 1 1/2	
02	1 1/4 - 1 1/2	BB
03	1 1/2 - 1 3/4	
04	1 1/2 - 1 3/4	BB
05	1 3/4 - 2	
06	1 3/4 - 2	BB
07	2 - 2 1/2	
08	2 - 2 1/2	BB
09	2 1/2 - 3	
10	2 1/2 - 3	BB
11	3 - 3 1/2	
12	3 - 3 1/2	BB
13	3 1/2 - 4	
14	3 1/2 - 4	BB
15	4 - 4 1/2	
16	4 - 4 1/2	BB
17	4 1/2 - 5	
18	4 1/2 - 5	BB
19	5 - 5 1/2	
20	5 - 5 1/2	BB
21	5 1/2 - 6	
22	5 1/2 - 6	BB
23	6 - 7	
24	6 - 7	BB

NOTES: SIZES ARE BARE ROOT EXCEPT WHEN FOLLOWED BY "BB" WHICH INDICATE BALL AND BURLAP.

EVERGREENS (PREFIX "D")		
CODE	SIZE HEIGHT IN FEET	
01	1 1/2 - 2	BB
02	2 - 2 1/2	BB
03	2 1/2 - 3	BB
04	3 - 3 1/2	BB
05	3 1/2 - 4	BB
06	4 - 5	BB
07	5 - 6	BB
08	6 - 7	BB
09	7 - 8	BB
10	8 - 9	BB

BB = BALL AND BURLAP OR IN POTS

VINES/GROUNDCOVERS (PREFIX "E")

CODE	SIZE	
01	1 YR. # 1	
02	1 YR. # 1	BB
03	2 YR. # 1	
04	2 YR. # 1	BB
05	3 YR. # 1	
06	3 YR. # 1	BB
07	4 YR. # 1	
08	4 YR. # 1	BB
09	5 YR. # 1	
10	5 YR. # 1	BB

BB = BALL AND BURLAP OR IN POTS

INTERMEDIATE TREES (PREFIX "B")

CODE	SIZE HEIGHT IN FEET	
01	1 1/2 - 2	BB
02	1 1/2 - 2	BB
03	2 - 3	BB
04	2 - 3	BB
05	3 - 4	BB
06	3 - 4	BB
07	4 - 5	BB
08	4 - 5	BB
09	5 - 6	BB
10	5 - 6	BB
11	6 - 7	BB
12	6 - 7	BB
13	7 - 8	BB
14	7 - 8	BB
15	8 - 9	BB
16	8 - 9	BB
17	9 - 10	BB
18	9 - 10	BB
19	10 - 12	BB
20	10 - 12	BB
21	12 - 14	BB
22	12 - 14	BB
23	14 - 16	BB
24	14 - 16	BB

NOTES: SIZES ARE BARE ROOT EXCEPT WHEN FOLLOWED BY "BB" WHICH INDICATE BALL AND BURLAP.

SEEDLING TREES (PREFIX "F")

CODE	SIZE YEARS OF GROWTH & TIMES TRANSPLANTED "T"	
01	1 YR.	
02	2 YR.	
03	3 YR. T	
04	2 YR. T	
05	2 - 3'	BR
06	3 - 4'	BR
07	4 - 6'	BR
08	6 - 8'	BR
09	12 - 18"	
10	18 - 24"	

BR = "WHIPS" OR "LINERS"

SEEDLING SHRUBS (PREFIX "G")

CODE	SIZE CROWN DIAMETER IN INCHES, YEARS OF GROWTH & TIMES TRANSPLANTED "T"	
01	1/8 - 3/16	
02	3/16 - 1/4	
03	1/4 - 3/8	
04	1 YR. T	
05	1/2 - 3/4	
06	2 YR. T	

SHRUBS (PREFIX "C")

CODE	SIZE HEIGHT IN FEET	
01	1 1/2 - 2	
02	1 1/2 - 2	BB
03	2 - 3	
04	2 - 3	BB
05	3 - 4	
06	3 - 4	BB
07	4 - 5	
08	4 - 5	BB
09	5 - 6	
10	5 - 6	BB
11	6 - 7	
12	6 - 7	BB

NOTES: SIZES ARE BARE ROOT EXCEPT WHEN FOLLOWED BY "BB" WHICH INDICATE BALL AND BURLAP.

SEEDLING EVERGREENS (PREFIX "H")

CODE	SIZE YEARS OF GROWTH & TIMES TRANSPLANTED "T"	
01	1 YR.	
02	2 YR.	
03	2 YR. T	
04	3 YR.	
05	3 YR. T	

NOT TO SCALE

FILE NAME =	USER NAME = steffenk	DESIGNED -	REVISED -
pw:\11084EBID\INTEG.illinois.gov\PI\DOT\Documents\DOT Offices\District 7\Projects\74740\DRAWING\CAD\Sheets\0774740-sht-details.dwg		CHECKED -	REVISED -
Default	PLOT DATE = 10/16/2015	DATE -	REVISED -

STATE OF ILLINOIS
DEPARTMENT OF TRANSPORTATION

PLANTING DETAILS

SCALE: SHEET OF SHEETS STA. TO STA.

DISTRICT 7 DETAIL NO. 2530000

F.A. RTE.	SECTION	COUNTY	TOTAL SHEETS	SHEET NO.
		VARIOUS	6	6
*D7 ASH BORER CONTROL 2016			CONTRACT NO. 74740	
ILLINOIS FED. AID PROJECT				