

STATE OF ILLINOIS
DEPARTMENT OF TRANSPORTATION
DIVISION OF HIGHWAYS
LINCOLN SCHOOL SIDEWALKS
MARION, ILLINOIS

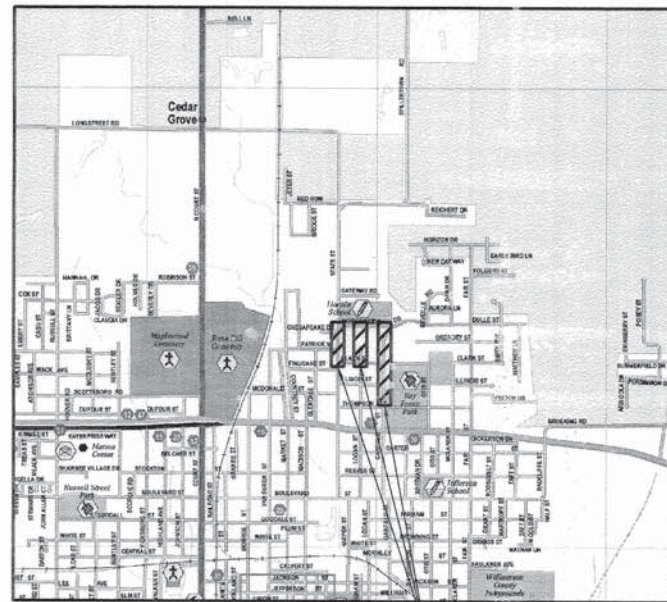
CONTRACT NO. 99562
JOB NO. C-99-530-15
SECTION NO. 14-00117-00-SW
PROJECT SRTS-4009(319)

INDEX OF SHEETS

1. COVER SHEET
2. GENERAL LAYOUT
3. PLAN SHEET - STATE STREET
4. PLAN SHEET - LOGAN STREET
5. PLAN SHEET - GARFIELD STREET
6. MISC. DETAILS

STANDARDS

- 000001-06 STANDARD SYMBOLS, ABBREVIATIONS AND PATTERNS
- 280001-07 TEMPORARY EROSION CONTROL SYSTEMS
- 424001-08 PERPENDICULAR CURB RAMPS
- 606001-06 CONCRETE CURB TYPE B & COMBINATION CURB & GUTTER
- 664001-02 CHAIN LINK FENCE
- 701006-05 OFF-RD OPS, 2L, 2W, 15' TO 24" FROM PAVEMENT EDGE
- 701901-04 TRAFFIC CONTROL DEVICES
- 720001-01 SIGN PANEL MOUNTING DETAILS
- 720006-04 SIGN PANEL ERECTION DETAILS
- 720011-01 METAL POSTS FOR SIGNS, MARKERS AND DELINEATORS
- 729001-01 APPLICATIONS OF TYPES A AND B METAL POSTS (FOR SIGNS & MARKERS)
- 780001-05 TYPICAL PAVEMENT MARKINGS
- BLR 22-7 TYPICAL APPLICATION OF TRAFFIC CONTROL DEVICES
- 701501-06 Urban Lane Closure, 2L, 2W, Undeveloped
- 701801-06 Lane Closure, Multiple (W or 2W) Crosswalk or Sidewalk Closure



LOCATION MAP
NO SCALE

QUANTITIES			
Item No.	Item	Unit	Qty.
20100110	TREE REMOVAL (6 TO 15 UNITS DIAMETER)	UNIT	24
20100210	TREE REMOVAL (OVER 15 UNITS DIAMETER)	UNIT	44
20400100	BORROW EXCAVATION	CY	370
25000200	SEEDING, CLASS 2	AC	0.3
25000400	NITROGEN FERTILIZER NUTRIENT	LB	27
25000500	PHOSPHORUS FERTILIZER NUTRIENT	LB	27
25000600	POTASSIUM FERTILIZER NUTRIENT	LB	27
25000700	AGRICULTURAL GROUND LIMESTONE	TON	0.6
25100115	MULCH METHOD 2	AC	0.3
31100100	SUBBASE GRANULAR MATERIAL, TYPE A	TON	240
42400100	PCC SIDEWALK 4"	SF	9,648
42400400	PCC SIDEWALK 7"	SF	1,125
42400800	DETECTABLE WARNING	SF	160
44000100	PAVEMENT REMOVAL	SY	159
44000500	COMBINATION CONCRETE CURB AND GUTTER REMOVAL	FT	41
44000800	SIDEWALK REMOVAL	SF	1,021
54010703	PRECAST CONCRETE BOX CULVERT, 7X3'	FT	16
56108200	ADJUSTING WATER VALVES 6"	EA	1
66400108	CHAIN LINK FENCE, 4'	FT	30
67100100	MOBILIZATION	LS	1
70102620	TRAFFIC CONTROL AND PROTECTION, STANDARD 701501	LS	1
72000100	SIGN PANEL TYPE 1	SF	18
72400600	RELOCATE SIGN PANEL ASSEMBLY TYPE B	EA	3
72900200	METAL POST TYPE B	FT	28
78000400	THERMOPLASTIC PAVEMENT MARKING - LINE 6"	FT	359
78000600	THERMOPLASTIC PAVEMENT MARKING - LINE 12"	FT	614
78300100	PAVEMENT MARKING REMOVAL	SF	145

△ SPECIALTY ITEMS

STATE OF ILLINOIS
DEPARTMENT OF TRANSPORTATION

APPROVED: October 28, 2015

Robert L. Butler
MAYOR, CITY OF MARION

PASSED: November 3, 2015

Dennis W. Hill
DISTRICT 9 ENGINEER OF LOCAL ROADS & STREETS

RELEASING FOR BID BASED ON LIMITED REVIEW: November 3, 2015

William L. Keim
DEPUTY DIRECTOR OF HIGHWAYS, REGION 5 ENGINEER

NOTE

UNDERGROUND STRUCTURES AND UTILITIES SHOWN HAVE BEEN PLOTTED FROM AVAILABLE SURVEYS AND RECORDS AND, THEREFORE, THEIR LOCATION MUST BE CONSIDERED APPROXIMATE ONLY. THE VERIFICATION OF THE LOCATION OF ALL UNDERGROUND FACILITIES, STRUCTURES AND UTILITIES, EITHER SHOWN OR NOT SHOWN ON THESE PLANS, SHALL BE THE RESPONSIBILITY OF THE CONTRACTOR. THE CONTRACTOR SHALL CONTACT THE J.U.L.I.E. OPERATOR AT 1-800-892-0123 FOR MARKING OF EXISTING UNDERGROUND UTILITIES. J.U.L.I.E. SHOULD BE CONTACTED A MINIMUM OF 96 HOURS IN ADVANCE OF CONSTRUCTION. CONTRACTOR SHALL MEET ALL REQUIREMENTS FOR CROSSING OF ANY EXISTING UTILITIES.

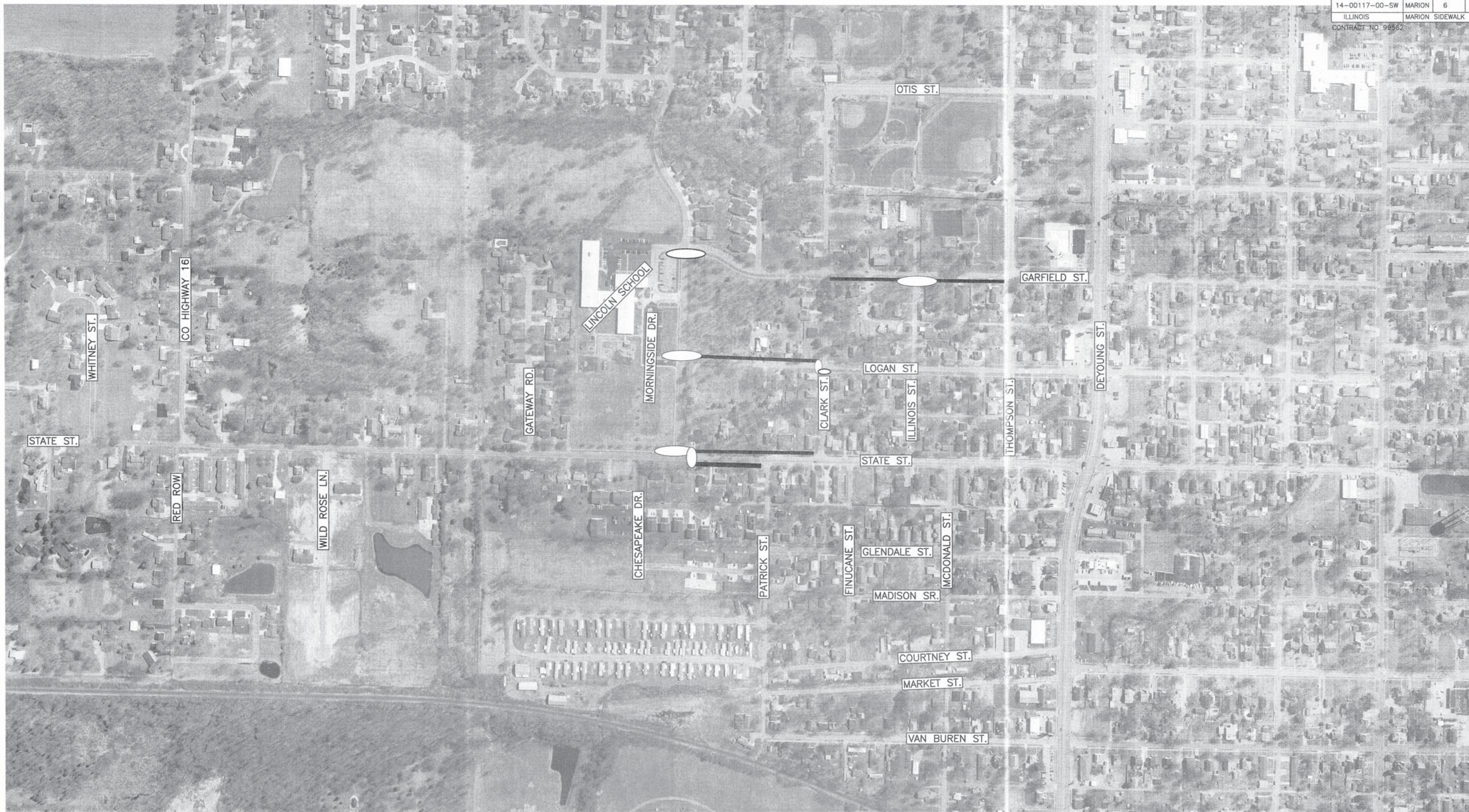
NOTE: ALL CONSTRUCTION SHALL CONFORM TO THE ILLINOIS STANDARD SPECIFICATIONS FOR ROAD AND BRIDGE CONSTRUCTION LATEST EDITION UNLESS OTHERWISE NOTED.

William Brian Ziegler
WILLIAM BRIAN ZIEGLER, P.E.
DATE: 10/20/15

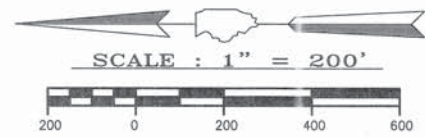


EXPIRES: NOVEMBER 30, 2015

SECTION	CITY	TOTAL SHEETS	SHEET NO.
14-00117-00-SW	MARION	6	2
ILLINOIS MARION SIDEWALK			
CONTRACT NO. 99562			

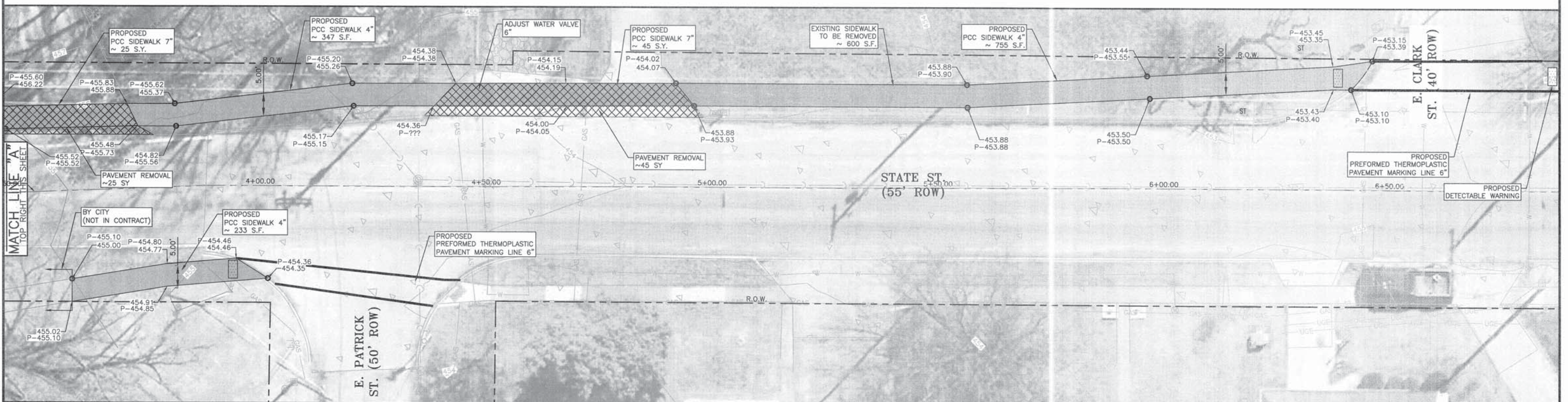
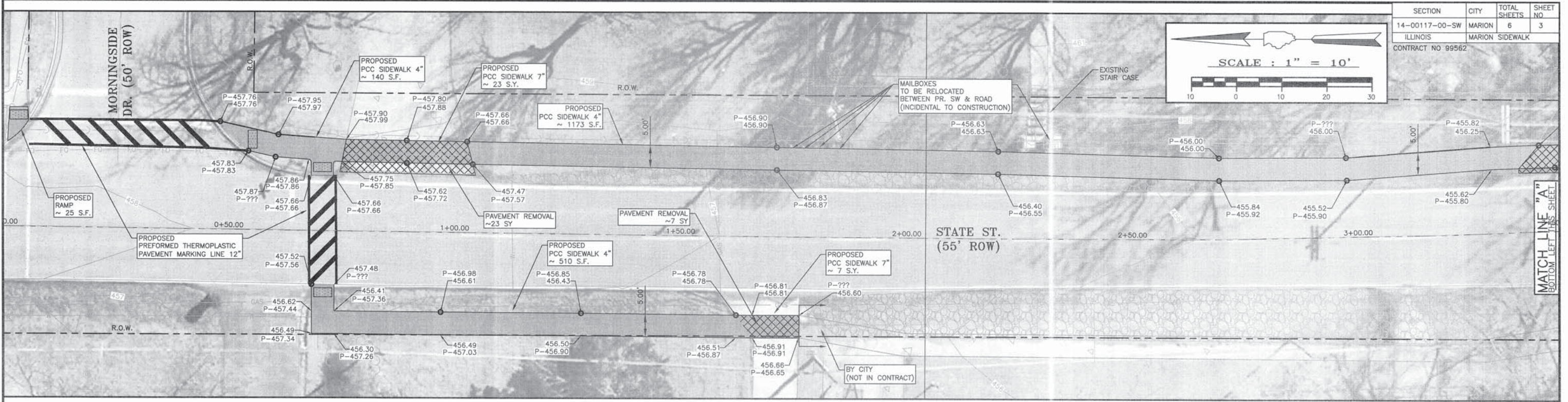
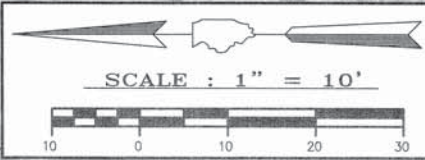


LEGEND	
	PROPOSED SIDEWALK
	PROPOSED CROSS WALK



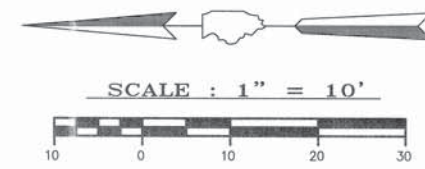
STATE OF ILLINOIS PROFESSIONAL DESIGN FIRM LICENSE NO. 184-004515	
© 2015 ALL RIGHTS RESERVED	
CLARIDA & ZIEGLER ENGINEERING CO.	
410 North Court St, P.O. Box 937 Marion, Illinois 62959 Phone - (618)993-6411, Fax - (618)993-6750	
GENERAL LAYOUT LINCOLN SCHOOL SIDEWALK PROGRAM MARION, ILLINOIS	
Date JANUARY 2015	DR. By GEG CK'D By WBZ
Scale 1"=200'	Job No. 11073 Sheet No. 02 of 06

SECTION	CITY	TOTAL SHEETS	SHEET NO.
14-00117-00-SW	MARION	6	3
ILLINOIS		MARION SIDEWALK	
CONTRACT NO 99562			



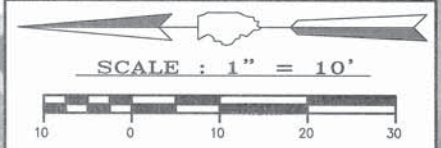
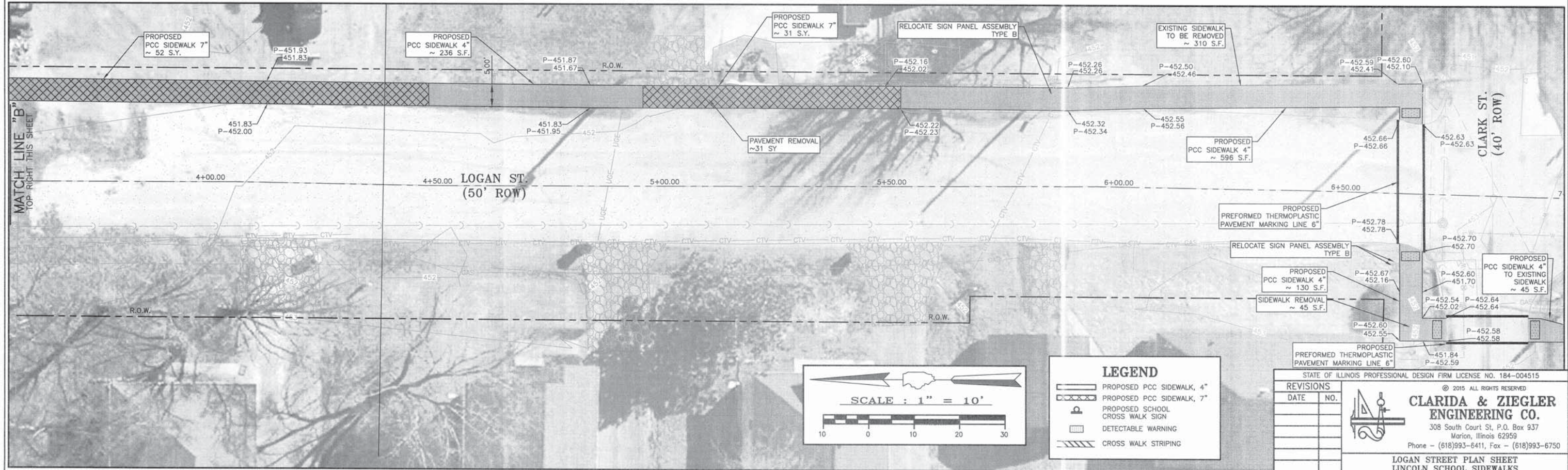
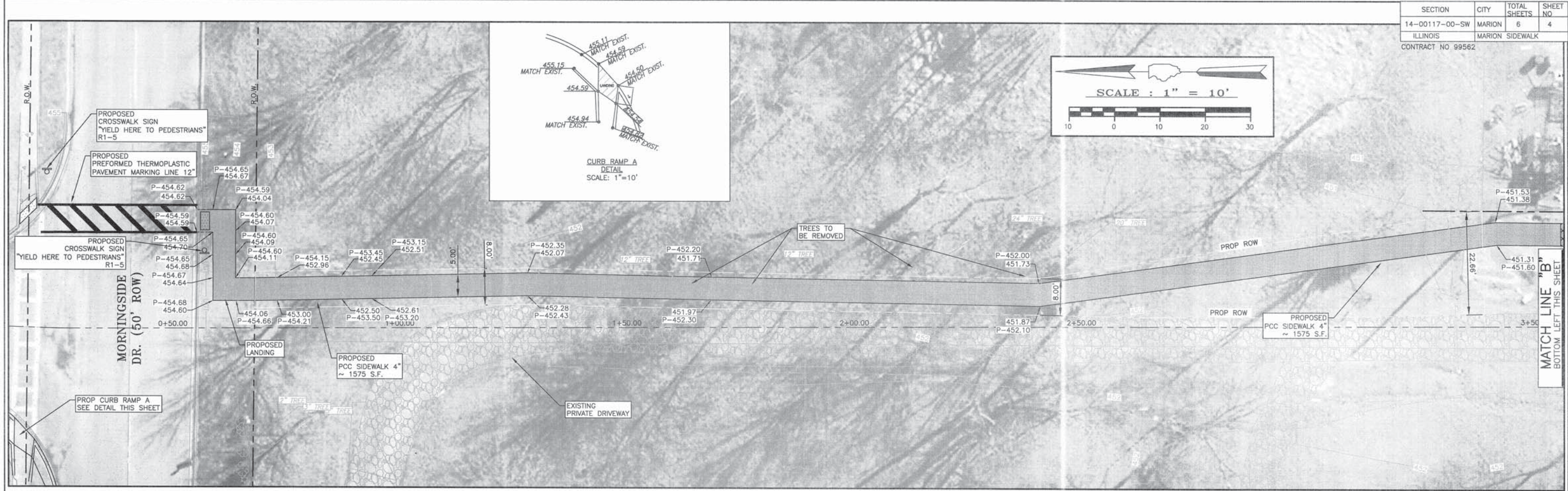
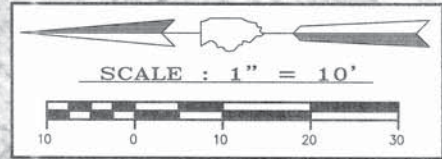
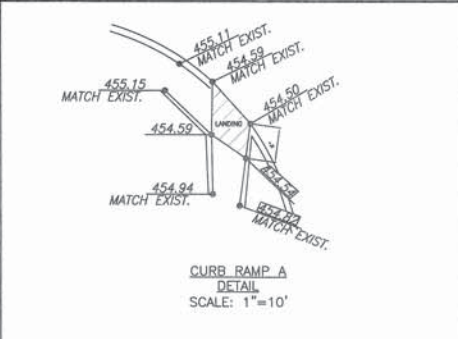
LEGEND

- PROPOSED PCC SIDEWALK, 4"
- PROPOSED PCC SIDEWALK, 7"
- PROPOSED SCHOOL CROSS WALK SIGN
- DETECTABLE WARNING
- CROSS WALK STRIPING



STATE OF ILLINOIS PROFESSIONAL DESIGN FIRM LICENSE NO. 184-004515	
© 2015 ALL RIGHTS RESERVED	
CLARIDA & ZIEGLER ENGINEERING CO.	
308 South Court St, P.O. Box 937 Marion, Illinois 62959 Phone - (618)993-6411, Fax - (618)993-6750	
STATE STREET PLAN SHEET LINCOLN SCHOOL SIDEWALKS MARION, ILLINOIS	
Date	04/07/15
DR. By	PJD
CK'D By	WBZ
Scale	1"=10'
Job No.	11073
Sheet No.	03 of 06

P:\11073 Lincoln School Sidewalks\Drawings\Plans\03-05 PLANS.dwg 10-28-15 07:47:13 AM bdy



LEGEND

- PROPOSED PCC SIDEWALK, 4"
- PROPOSED PCC SIDEWALK, 7"
- PROPOSED SCHOOL CROSS WALK SIGN
- DETECTABLE WARNING
- CROSS WALK STRIPING

STATE OF ILLINOIS PROFESSIONAL DESIGN FIRM LICENSE NO. 184-004515

© 2015 ALL RIGHTS RESERVED

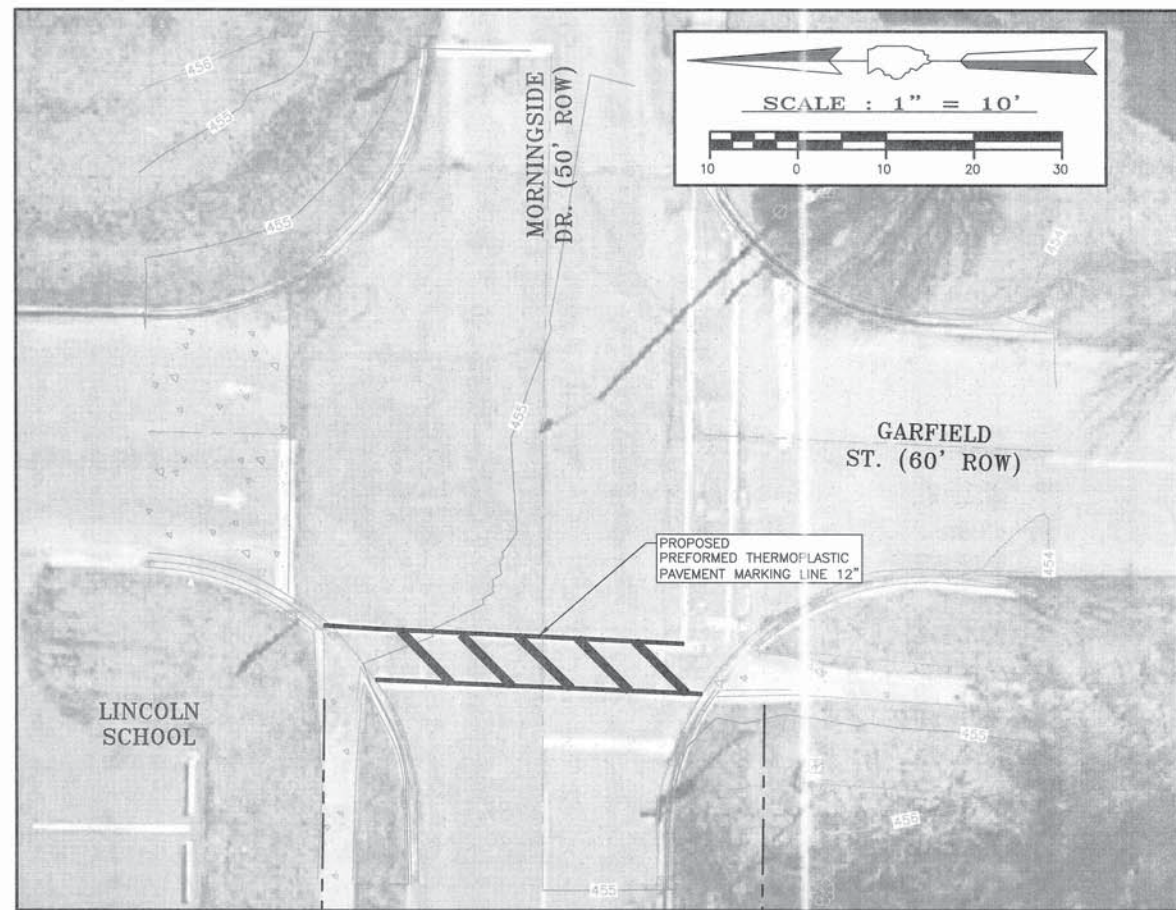
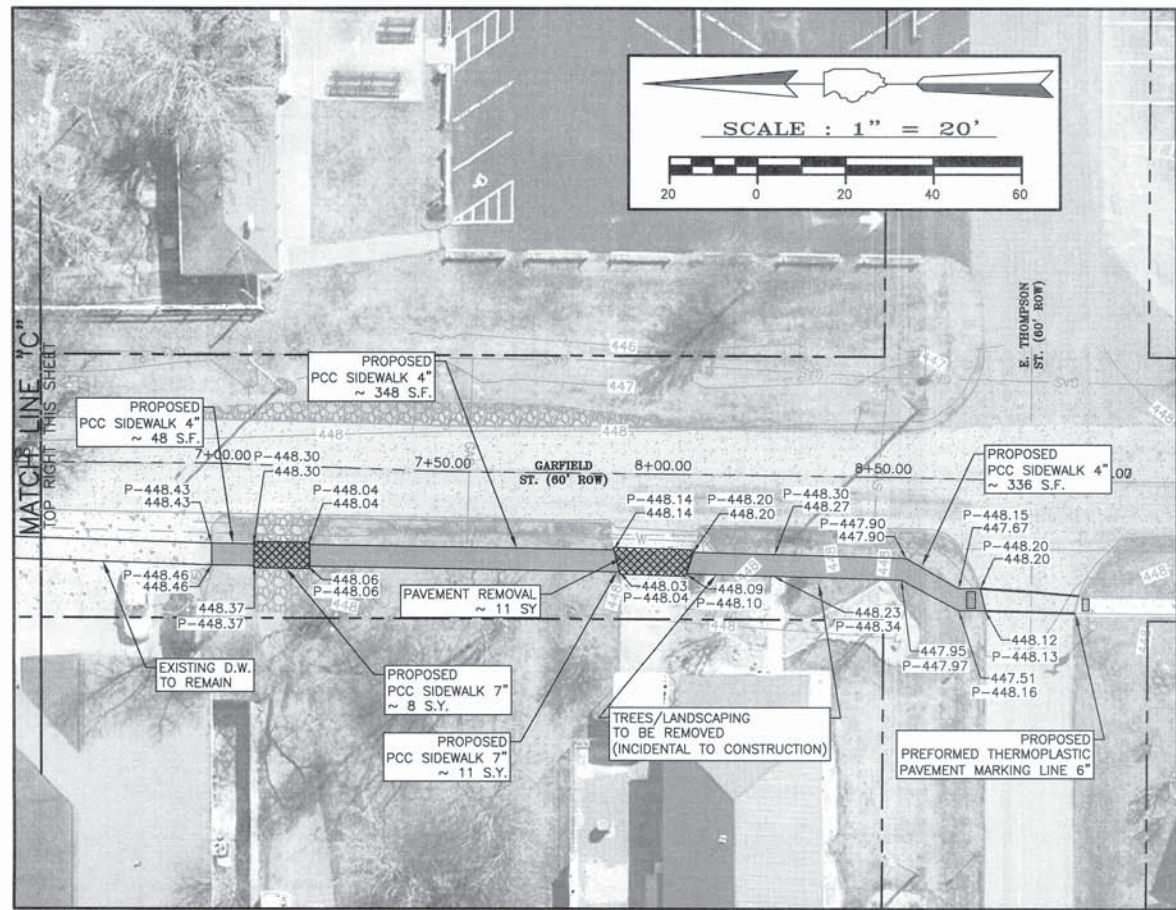
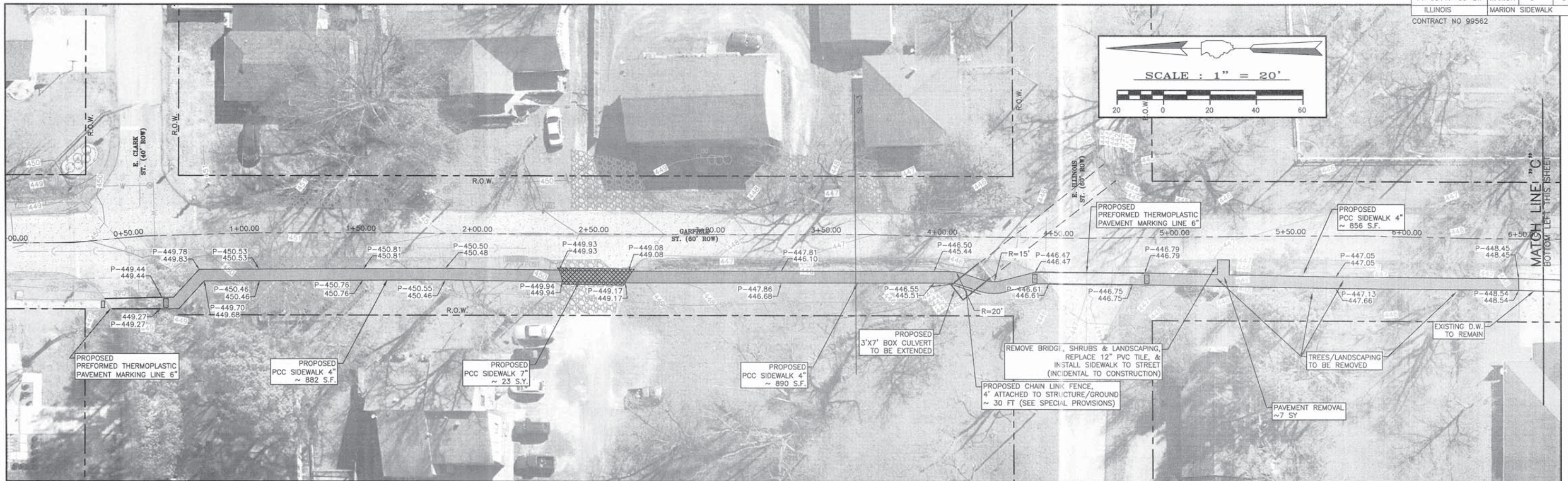
CLARIDA & ZIEGLER ENGINEERING CO.
308 South Court St, P.O. Box 937
Marion, Illinois 62959
Phone - (618)993-6411, Fax - (618)993-6750

LOGAN STREET PLAN SHEET
LINCOLN SCHOOL SIDEWALKS
MARION, ILLINOIS

REVISIONS	DATE	NO.

Date 04/07/15 DR. By PJD CK'D By WBZ
Scale 1"=10' Job No. 11073 Sheet No. 04 of 06

SECTION	CITY	TOTAL SHEETS	SHEET NO.
14-00117-00-SW	MARION	6	5
ILLINOIS		MARION SIDEWALK	
CONTRACT NO 99562			



LEGEND	
	PROPOSED PCC SIDEWALK, 4"
	PROPOSED PCC SIDEWALK, 7"
	PROPOSED SCHOOL CROSS WALK SIGN
	DETECTABLE WARNING
	CROSS WALK STRIPING

STATE OF ILLINOIS PROFESSIONAL DESIGN FIRM LICENSE NO. 184-004515

REVISIONS	DATE	NO.

© 2015 ALL RIGHTS RESERVED

CLARIDA & ZIEGLER ENGINEERING CO.
 308 South Court St, P.O. Box 937
 Marion, Illinois 62959
 Phone - (618)993-6411, Fax - (618)993-6750

GARFIELD STREET PLAN SHEET
LINCOLN SCHOOL SIDEWALKS
MARION, ILLINOIS

Date 02/27/15 DR. By PJD CK'D By WBZ
 Scale AS SHOWN Job No. 11073 Sheet No. 05 of 06

P:\11073 Lincoln School Sidewalks\Drawings-Plans\03-05 PLANS.dwg 10-28-15 07:45:31 AM Andy

