

GENERAL NOTES

ANY REFERENCE TO A STANDARD IN THESE PLANS SHALL BE INTERPRETED TO MEAN THE EDITION AS INDICATED BY THE SUBNUMBER SHOWN IN THE LIST OF STANDARDS OR THE COPY INCLUDED IN THESE PLANS.

ALL EXCAVATED MATERIAL, WHICH INCLUDES DIGGING OR GRADING OF ANY SOIL OR FILL MATERIAL, WITH THE EXCEPTION OF AGGREGATE FILLS, MUST BE INCORPORATED WITHIN THE IDOT RIGHT OF WAY DUE TO ENVIRONMENTAL DOCUMENTATION REQUIREMENTS.

COMMITMENTS

THE ENGINEER SHALL RECORD FINAL LOCATIONS AND QUANTITIES FOR DECK SLAB REPAIR (REPAIR DEPTH), DECK SLAB REPAIR (FULL DEPTH), STRUCTURAL REPAIR OF CONCRETE (DEPTH EQUAL TO OR LESS THAN 5") AND STRUCTURAL REPAIR OF CONCRETE (DEPTH GREATER THAN 5") ON "AS-BUILT" DETAIL SHEETS AND SUBMIT THEM TO THE BRIDGE OFFICE IN SPRINGFIELD FOR THEIR RECORDS IN A TIMELY MANNER AFTER PROJECT COMPLETION. CONTACT PERSON IS VICTOR VELIZ, PHONE: (217)-782-2708.

STATE OF ILLINOIS
DEPARTMENT OF TRANSPORTATION
DISTRICT THREE
AS BUILT INFORMATION

SUPERVISING CONSTRUCTION FIELD ENGINEER

RESIDENT ENGINEER / TECHNICIAN

START & END DATES
OF CONSTRUCTION:

INSPECTORS:

STATE OF ILLINOIS
DEPARTMENT OF TRANSPORTATION
DISTRICT THREE

PREPARED BY: _____
DISTRICT STUDIES & PLANS ENGINEER

DATE: _____

EXAMINED BY: _____
DISTRICT CONSTRUCTION ENGINEER

DISTRICT MATERIALS ENGINEER

DISTRICT OPERATIONS ENGINEER

**STATE OF ILLINOIS
DEPARTMENT OF TRANSPORTATION**

GENERAL NOTES

SCALE: SHEET OF SHEETS STA. TO STA.

F.A.I. RTE.	SECTION	COUNTY	TOTAL SHEETS	SHEET NO.
39	(50-6HB-1)I-3	LASALLE	34	2
CONTRACT NO. 66L00				
		ILLINOIS	FED. AID PROJECT	

USER NAME = NOLASCOCJ	DESIGNED -	REVISED -
	DRAWN -	REVISED -
PLOT SCALE = 100.0000' / in.	CHECKED -	REVISED -
PLOT DATE = 10/16/2020	DATE -	REVISED -

CODE NO.	ITEM	UNIT	TOTAL QUANTITY	CONSTR. CODE	
				90% FED 10% STATE	
				FUND TYPE	
				BRIDGE	NHPP
				0047	050-0171
20800150	TRENCH BACKFILL	CU YD	36		36
28100105	STONE RIPRAP, CLASS A3	SQ YD	420		420
40600295	POLYMERIZED BITUMINOUS MATERIALS (TACK COAT)	POUND	1971		1971
40600400	MIXTURE FOR CRACKS, JOINTS, AND FLANGWAYS	TON	1		1
40600906	POLYMERIZED HOT-MIX ASPHALT BINDER COURSE (HAND METHOD), N70	TON	1.5		1.5
40600990	TEMPORARY RAMP	SQ YD	112		112
40603235	POLYMERIZED HOT-MIX ASPHALT BINDER COURSE, 1L-19.0, N70	TON	368		368
40604162	POLYMERIZED HOT-MIX ASPHALT SURFACE COURSE, 1L-9.5, MIX "D", N70	TON	245		245
44000164	HOT-MIX ASPHALT SURFACE REMOVAL, 3 3/4"	SQ YD	2919		2919
44000300	CURB REMOVAL	FOOT	36		36
44201753	CLASS D PATCHES, TYPE II, 9 INCH	SQ YD	44		44
50102400	CONCRETE REMOVAL	CU YD	17.5		17.5
50157300	PROTECTIVE SHIELD	SQ YD	724		724
50300255	CONCRETE SUPERSTRUCTURE	CU YD	19.1		19.1

MODEL: Default
 FILE: \\nas101.pw.state.il.us\pub\room\data\links\gov\pww\DOT\Documents\DOT_Offices\District_3\Projects\0366L00\Cadd\0366L00-sh-500.dgn

USER NAME = NOLASCOCJ	DESIGNED -	REVISED -	STATE OF ILLINOIS DEPARTMENT OF TRANSPORTATION	SUMMARY OF QUANTITIES			F.A.I. RTE.	SECTION	COUNTY	TOTAL SHEETS	SHEET NO.
PLOT SCALE = 100.0000' / in.	DRAWN -	REVISED -					39	(50-6HB-1)I-3	LASALLE	34	3
PLOT DATE = 10/16/2020	CHECKED -	REVISED -		SCALE: SHEET OF SHEETS STA. TO STA.			CONTRACT NO. 66L00				
DATE -	REVISED -	REVISED -					ILLINOIS FED. AID PROJECT				

CODE NO.	ITEM	UNIT	TOTAL QUANTITY	90% FED 10% STATE	CONSTR. CODE
					FUND TYPE
					NHPP
					BRIDGE
				0047	050-0171
50800205	REINFORCEMENT BARS, EPOXY COATED	POUND	2076	2076	
50800515	BAR SPLICERS	EACH	30	30	
52000110	PREFORMED JOINT STRIP SEAL	FOOT	134	134	
59000200	EPOXY CRACK INJECTION	FOOT	63	63	
60500060	REMOVING INLETS	EACH	4	4	
60601105	CONCRETE CURB, TYPE M	FOOT	60	60	
64300450	IMPACT ATTENUATORS (NON-REDIRECTIVE), TEST LEVEL 3	EACH	2	2	
67000400	ENGINEER'S FIELD OFFICE, TYPE A	CAL MO	4	4	
67100100	MOBILIZATION	L SUM	1	1	
70100207	TRAFFIC CONTROL AND PROTECTION, STANDARD 701402	EACH	1	1	
70100420	TRAFFIC CONTROL AND PROTECTION, STANDARD 701411	EACH	1	1	
70100500	TRAFFIC CONTROL AND PROTECTION, STANDARD 701326	L SUM	1	1	
70107025	CHANGEABLE MESSAGE SIGN	CAL DA	56	56	
70300100	SHORT TERM PAVEMENT MARKING	FOOT	1330	1330	

MODEL: Default
 FILE: \\nas101.pw.state.il.us\pub\room\data\links\gov\PI\DOT\Documents\DOT_Offices\District_3\Projects\0366L00\CADD\0366L00-sh-500.dgn

USER NAME = NOLASCOCJ	DESIGNED -	REVISED -
	DRAWN -	REVISED -
PLOT SCALE = 100.0000 ' / in.	CHECKED -	REVISED -
PLOT DATE = 10/16/2020	DATE -	REVISED -

**STATE OF ILLINOIS
DEPARTMENT OF TRANSPORTATION**

SUMMARY OF QUANTITIES

SCALE: SHEET OF SHEETS STA. TO STA.

F.A.I. RTE.	SECTION	COUNTY	TOTAL SHEETS	SHEET NO.
39	(50-6HB-1)I-3	LASALLE	34	4
CONTRACT NO. 66L00			ILLINOIS FED. AID PROJECT	

CODE NO.	ITEM	UNIT	TOTAL QUANTITY	CONSTR. CODE	
				90% FED 10% STATE	
				FUND TYPE	
				BRIDGE	NHPP
				0047	050-0171
70300150	SHORT TERM PAVEMENT MARKING REMOVAL	SQ FT	444		444
70300220	TEMPORARY PAVEMENT MARKING - LINE 4"	FOOT	20912		20912
70400100	TEMPORARY CONCRETE BARRIER	FOOT	1126		1126
70400200	RELOCATE TEMPORARY CONCRETE BARRIER	FOOT	1126		1126
70600350	IMPACT ATTENUATORS, RELOCATE (NON- REDIRECTIVE), TEST LEVEL 3	EACH	2		2
* 78003100	PREFORMED PLASTIC PAVEMENT MARKING, TYPE B - LETTERS AND SYMBOLS	SQ FT	199		199
* 78003180	PREFORMED PLASTIC PAVEMENT MARKING, TYPE B - LINE 24"	FOOT	84		84
* 78008210	POLYUREA PAVEMENT MARKING TYPE I - LINE 4"	FOOT	20912		20912
* 78008230	POLYUREA PAVEMENT MARKING TYPE I - LINE 6"	FOOT	1032		1032
* 78008240	POLYUREA PAVEMENT MARKING TYPE I - LINE 8"	FOOT	1143		1143
* 78008250	POLYUREA PAVEMENT MARKING TYPE I - LINE 12"	FOOT	155		155
* 78100100	RAISED REFLECTIVE PAVEMENT MARKER	EACH	14		14
* 78200020	CURB REFLECTORS	EACH	154		154
78300200	RAISED REFLECTIVE PAVEMENT MARKER REMOVAL	EACH	14		14

*= SPECIALTY ITEM

MODEL: Default
 FILE: \\nas101.pw.state.il.us\pub\room\data\illinois.gov\PW\DOT\Documents\DOT_Offices\District_3\Projects\0366\00\CADD\data\0366\00-sh-500.dgn

USER NAME = NOLASCOCJ	DESIGNED -	REVISED -
	DRAWN -	REVISED -
PLOT SCALE = 100.0000' / in.	CHECKED -	REVISED -
PLOT DATE = 10/16/2020	DATE -	REVISED -

STATE OF ILLINOIS
DEPARTMENT OF TRANSPORTATION

SUMMARY OF QUANTITIES			
SCALE:	SHEET	OF	SHEETS

F.A.I. RTE.	SECTION	COUNTY	TOTAL SHEETS	SHEET NO.
39	(50-6HB-1)I-3	LASALLE	34	5
CONTRACT NO. 66L00				
ILLINOIS FED. AID PROJECT				

CODE NO.	ITEM	UNIT	TOTAL QUANTITY	CONSTR. CODE
				FUND TYPE
				NHPP
				BRIDGE
				0047
				050-0171
X0326223	FOAM, EXPANDING POLYURETHANE, HIGH-DENSITY	POUND	630	630
X0326649	LINEAR DELINEATOR PANELS, 6 INCH	EACH	14	14
X0327371	PLUG EXISTING PIPE	CU YD	8	8
X0327809	LINEAR DELINEATOR PANELS, 4 INCH	EACH	14	14
X0327980	PAVEMENT MARKING REMOVAL - WATER BLASTING	SQ FT	11519	11519
X2700001	TEMPORARY RUMBLE STRIPS (SPECIAL)	EACH	4	4
50300260	BRIDGE DECK GROOVING	SQ YD	1303	1303
Z0007101	CONTAINMENT AND DISPOSAL OF LEAD PAINT CLEANING RESIDUES NO. 1	L SUM	1	1
X5067501	BRIDGE CLEANING AND PAINTING WARRANTY NUMBER 1	L SUM	1	1
42001300	PROTECTIVE COAT	SQ YD	1796	1796
X7040305	TEMPORARY CONCRETE BARRIER, TERMINAL SECTION (SPECIAL)	EACH	8	8
* X7830060	GROOVING FOR RECESSED PAVEMENT MARKING, LETTERS AND SYMBOLS	SQ FT	199	199
* X7830070	GROOVING FOR RECESSED PAVEMENT MARKING 5"	FOOT	20912	20912
* X7830076	GROOVING FOR RECESSED PAVEMENT MARKING 9"	FOOT	1143	1143

*= SPECIALTY ITEM

MODEL: Default
 FILE NAME: P:\p12100000.dwg
 PROJECT: 10/16/2020
 USER: NOLASCOCJ

USER NAME = NOLASCOCJ	DESIGNED -	REVISED -
PLOT SCALE = 100.0000' / in.	DRAWN -	REVISED -
PLOT DATE = 10/16/2020	CHECKED -	REVISED -
	DATE -	REVISED -

**STATE OF ILLINOIS
DEPARTMENT OF TRANSPORTATION**

SUMMARY OF QUANTITIES

SCALE: SHEET OF SHEETS STA. TO STA.

F.A.I. RTE.	SECTION	COUNTY	TOTAL SHEETS	SHEET NO.
39	(50-6HB-1)I-3	LASALLE	34	6
			CONTRACT NO. 66L00	
ILLINOIS FED. AID PROJECT				

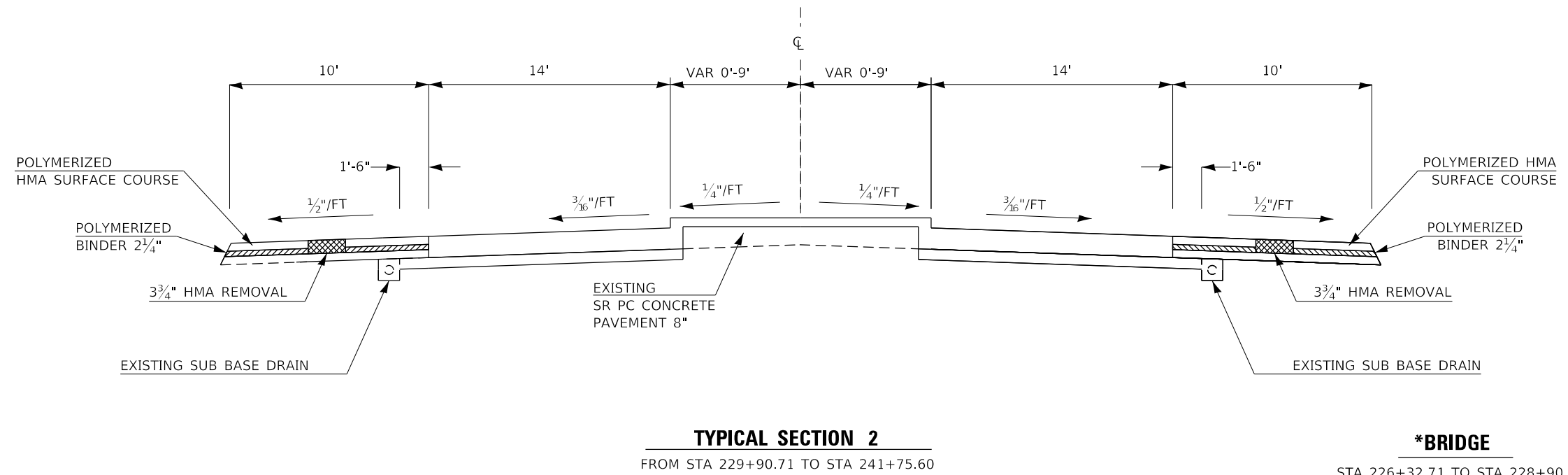
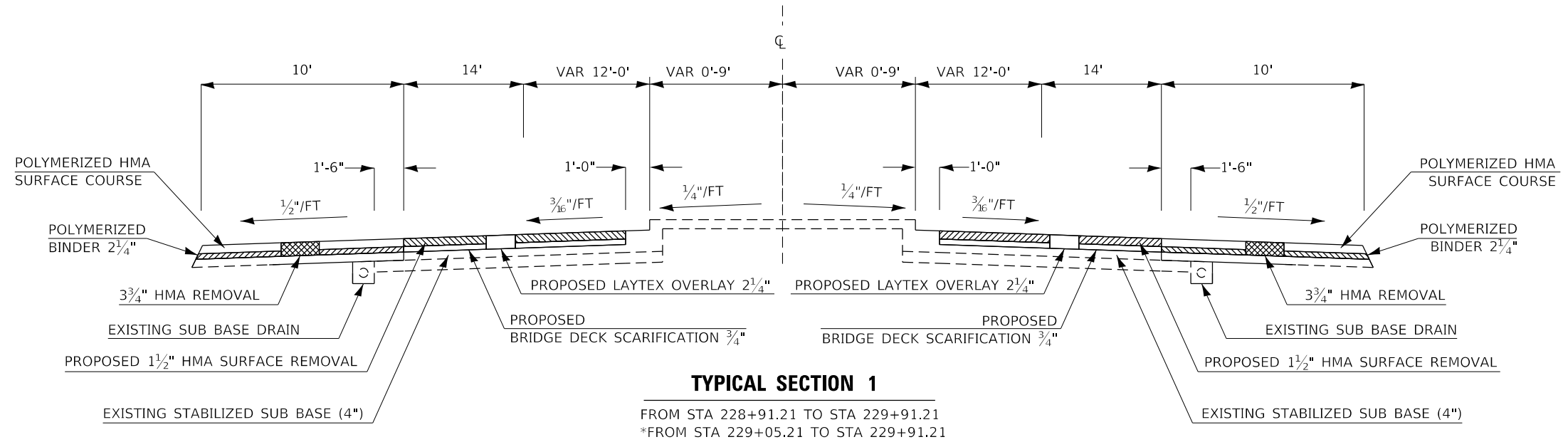
CODE NO.	ITEM	UNIT	TOTAL QUANTITY	CONSTR. CODE
				FUND TYPE
				NHPP
				BRIDGE
				0047
				050-0171
* X7830090	GROOVING FOR RECESSED PAVEMENT MARKING 25"	FOOT	84	84
Z0004556	HOT-MIX ASPHALT SURFACE REMOVAL (DECK)	SQ YD	1303	1303
Z0006012	BRIDGE DECK LATEX CONCRETE OVERLAY, 2 1/4 INCHES	SQ YD	1303	1303
Z0010501	CLEANING AND PAINTING STEEL BRIDGE NO. 1	L SUM	1	1
Z0012130	BRIDGE DECK SCARIFICATION 3/4"	SQ YD	1303	1303
Z0012754	STRUCTURAL REPAIR OF CONCRETE (DEPTH EQUAL TO OR LESS THAN 5 INCHES)	SQ FT	289	289
Z0016001	DECK SLAB REPAIR (FULL DEPTH, TYPE I)	SQ YD	5	5
Z0016002	DECK SLAB REPAIR (FULL DEPTH, TYPE II)	SQ YD	35	35
Z0030850	TEMPORARY INFORMATION SIGNING	SQ FT	42	42

90% FED
10% STATE

*= SPECIALTY ITEM

MODEL: Default
FILE NAME: P:\p1200000.dwg
PROJECT: 10/16/2020
DRAWN: NOLASCOCJ
CHECKED: NOLASCOCJ
DATE: 10/16/2020

USER NAME = NOLASCOCJ	DESIGNED -	REVISED -	STATE OF ILLINOIS DEPARTMENT OF TRANSPORTATION	SUMMARY OF QUANTITIES				F.A.I. RTE:	SECTION	COUNTY	TOTAL SHEETS	SHEET NO.
PLOT SCALE = 100.0000' / in.	DRAWN -	REVISED -						39	(50-6HB-1)I-3	LASALLE	34	7
PLOT DATE = 10/16/2020	CHECKED -	REVISED -		SCALE:	SHEET	OF	SHEETS	STA.	TO	STA.	ILLINOIS FED. AID PROJECT	
	DATE -	REVISED -										



***BRIDGE**
 STA 226+32.71 TO STA 228+90.71

BRIDGE APPROACH SLAB
 FROM STA 225+32.71 TO STA 226+32.71
 FROM STA 228+90.71 TO STA 229+90.71

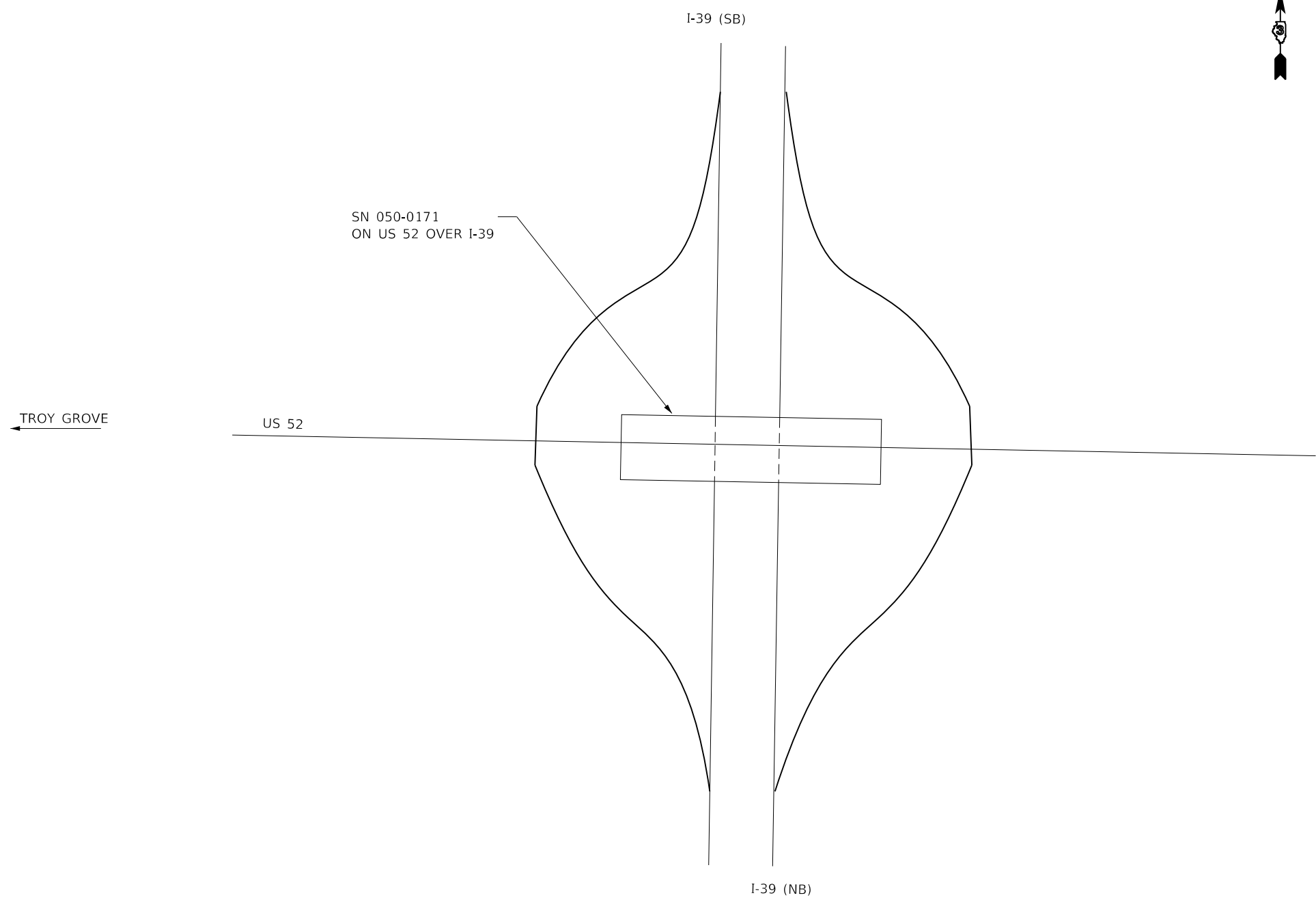
MODEL: Default
 FILE: \\nas01c01.pwiddot.com\data\illinois\pwr\pww\DOT\Documents\DOT_Offices\Illinois\3\Projects\033661\033661_00-shc-hydrat.dgn

USER NAME = NOLASCOCJ	DESIGNED -	REVISED -
	DRAWN -	REVISED -
PLOT SCALE = 100.0000' / in.	CHECKED -	REVISED -
PLOT DATE = 10/16/2020	DATE -	REVISED -

**STATE OF ILLINOIS
 DEPARTMENT OF TRANSPORTATION**

TYPICAL SECTION	
SCALE:	SHEET OF SHEETS STA. TO STA.

F.A.I. RTE.	SECTION	COUNTY	TOTAL SHEETS	SHEET NO.
39	(50-6HB-1)I-3	LASALLE	34	8
CONTRACT NO. 66L00				
ILLINOIS FED. AID PROJECT				



PERMANENT SURVEY MARKERS					
GPS NUMBER	DESCRIPTION	EXISTING MONUMENT TYPE	PROPOSED MONUMENT TYPE	MONUMENT RECORD TO BE RECORDED	RESPONSIBILITY
N/A	NO PERMANENT SURVEY MARKERS OR SECTION CORNER MARKERS TO BE SET ON THIS JOB	N/A	N/A	N/A	N/A
<p>THERE ARE NO RECORD LAND SURVEY OR CENTERLINE CONTROL MONUMENTS LOCATED WITHIN THE CONSTRUCTION LIMITS. UNKNOWN MONUMENTS SET BY OTHERS MAY EXIST. IF FOUND, THE R.E. MUST TIE AND REQUEST PLATS AND PLANS PERSONNEL TO GPS ANY MONUMENT(S) SUBJECT TO DAMAGE OR DESTRUCTION FROM THE STRUCTURE PRESERVATION PROJECT, AND INFORM THEM TO RESET THE MONUMENT(S) UPON JOB COMPLETION. NO MONUMENT RECORDS WILL BE REQUIRED FOR THIS JOB.</p>					

MODEL: Default
 FILE: \\nas01c.psu.edu\pub\haronom.dad\illinois\pww\DOT\Documents\DOT_Offices\District_3\Projects\0366\00\CADD\data\0366\00-sht-line_Diagram & PSM TABLE

USER NAME = NOLASCOCJ	DESIGNED -	REVISED -
	DRAWN -	REVISED -
PLOT SCALE = 100.0000' / in.	CHECKED -	REVISED -
PLOT DATE = 10/16/2020	DATE -	REVISED -






STATE OF ILLINOIS
DEPARTMENT OF TRANSPORTATION

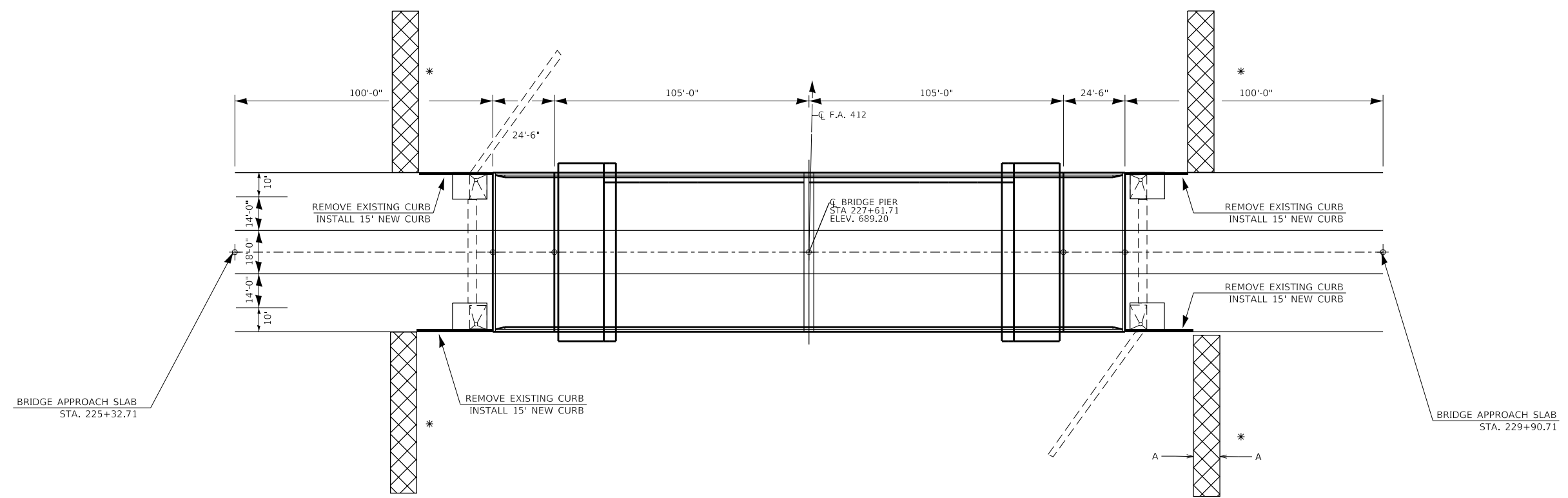
LINE DIAGRAM & PERMANENT SURVEY MARKER TABLE

SCALE: SHEET OF SHEETS STA. TO STA.

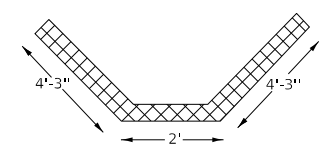
F.A.I. RTE.	SECTION	COUNTY	TOTAL SHEETS	SHEET NO.
39	(50-6HB-1)I-3	LASALLE	34	9
ILLINOIS FED. AID PROJECT			CONTRACT NO. 66L00	

LEGEND

	CONCRETE CURB, TYPE M
	CLASS D PATCH & TRENCH BACKFILL
	REMOVAL OF EXISTING INLET
	RIPRAP
	PLUG EXISTING PIPE
*	90°



PLAN S.N. 050-0171



A-A
ALL FOUR QUADRANTS HAVE THE SAME CROSSSECTION FOR RIPRAP SHUTES

FILE NAME =	USER NAME = NOLASCOCJ	DESIGNED -	REVISED -	STATE OF ILLINOIS DEPARTMENT OF TRANSPORTATION	DRAINAGE			F.A.I. RTE.	SECTION	COUNTY	TOTAL SHEETS	SHEET NO.
pw:\planroom\dot\illinois\gov\PWDOT\Documents\IDOT\Office\District 3\Projects\D366L00\CADData\D366L00-shd-drawings		DRAWN -	REVISED -		39	(50-6HB-1)I-3	LASALLE	34	11			
Default	PLOT SCALE = 100,0000' / in.	CHECKED -	REVISED -		CONTRACT NO. 66L00							
	PLOT DATE = 10/16/2020	DATE -	REVISED -		SCALE:	SHEET OF SHEETS	STA. TO STA.	ILLINOIS FED. AID PROJECT				

ROUTE NO.	SECTION	COUNTY	TOTAL SHEETS	SHEET NO.
FA-412	50-6 HB-1	LaSALLE	34	24
FED. ROAD DIST. NO.	ALIGNED PROJECT			

CURVE DATA (REVERSE CURVE)
 Δ = 5°05'23" R = 1521.75'
 D = 3" 45' 54" L = 135.18'
 T₁ = 67.63' E = 150'

STORM SEWERS, TYPE 1 - 12"
 STA. 224+00
 12" X 36"
 U.S.F.L. 5' RT. ELEV. 683.30
 D.S.F.L. 43' LT. ELEV. 681.40
 END SECTIONS, 12" - 1 EACH

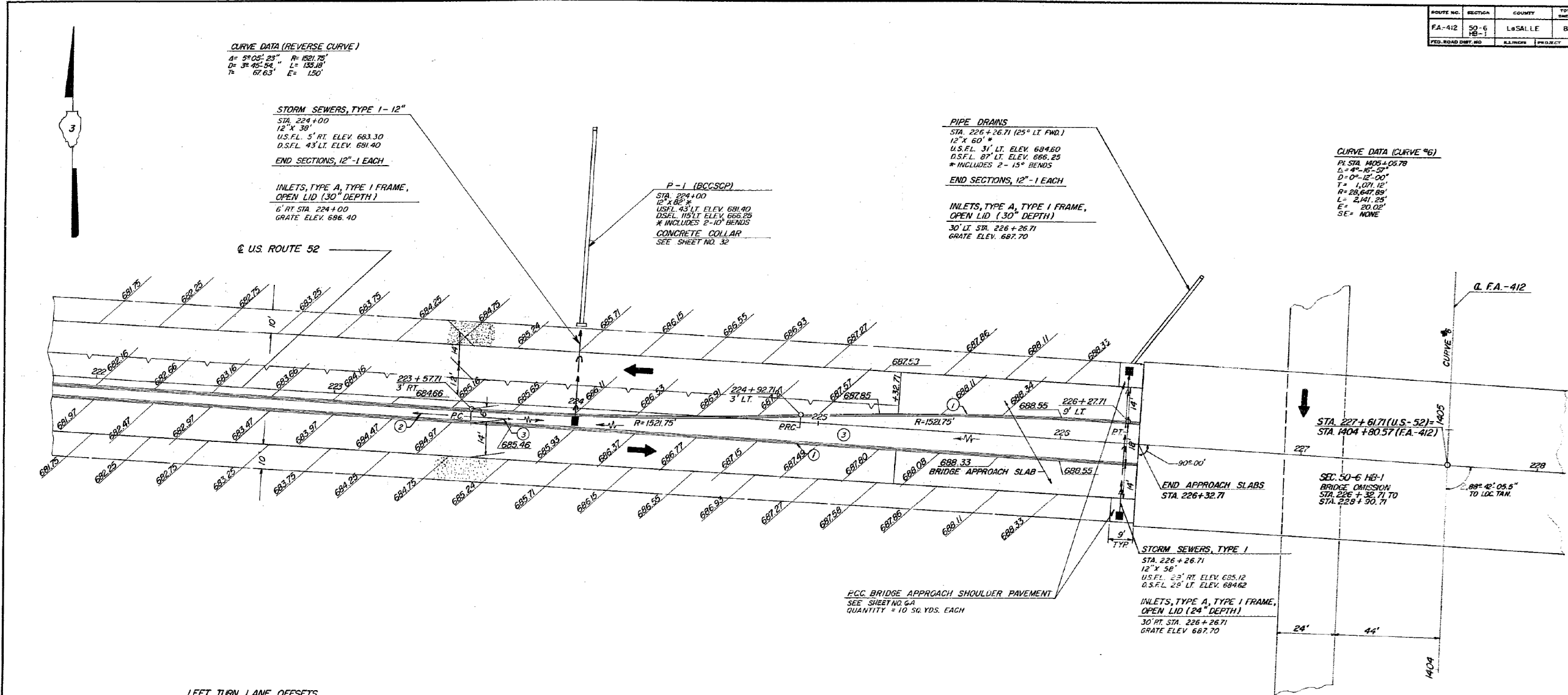
**INLETS, TYPE A, TYPE I FRAME,
 OPEN LID (30" DEPTH)**
 6' RT STA. 224+00
 GRATE ELEV. 686.40

P-1 (BCCSCP)
 STA. 224+00
 12" X 60"
 U.S.F.L. 43' LT. ELEV. 681.40
 D.S.F.L. 115' LT. ELEV. 686.25
 * INCLUDES 2-10' BENDS
 CONCRETE COLLAR
 SEE SHEET NO. 32

PIPE DRAINS
 STA. 226+26.71 (25' LT. FWD.)
 12" X 60"
 U.S.F.L. 31' LT. ELEV. 684.60
 D.S.F.L. 87' LT. ELEV. 686.25
 * INCLUDES 2-15' BENDS
 END SECTIONS, 12" - 1 EACH

**INLETS, TYPE A, TYPE I FRAME,
 OPEN LID (30" DEPTH)**
 30' LT. STA. 226+26.71
 GRATE ELEV. 687.70

CURVE DATA (CURVE #6)
 PI STA. 1403+05.78
 L = 45'-37"
 D = 0°-12'-00"
 T = 1,071.12'
 R = 28,647.89'
 L = 2,141.25'
 E = 20.02'
 SE = NONE



LEFT TURN LANE OFFSETS

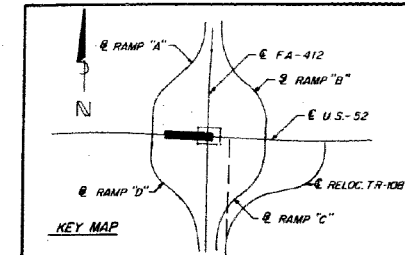
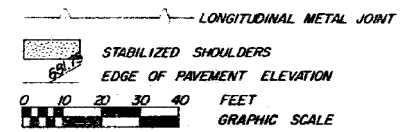
STATION	OFFSETS FROM	
	LT	RT
223+57.71 B.M.		3.00
223+75.00		2.90
224+00.00		2.41
224+25.00		1.51
224+50.00		0.20
224+75.00	1.53	
224+92.71	3.00	
225+00.00	3.63	
225+25.00	5.53	
225+32.71	6.03	
225+50.00	7.01	
225+75.00	8.03	
226+00.00	8.75	
226+25.00	9.00	
226+27.71 B.M.	9.00	

FOR INFORMATION ONLY

NOTE: ALL DIMENSIONS ARE TO EDGE OF PAVEMENT, UNLESS OTHERWISE NOTED

LEGEND

- ① COMBINATION CONCRETE CURB & GUTTER, TYPE M 6.06
- ② CONCRETE MEDIAN, TYPE M 6.06 (SOLID)
- ③ CONCRETE MEDIAN SURFACE, 4"

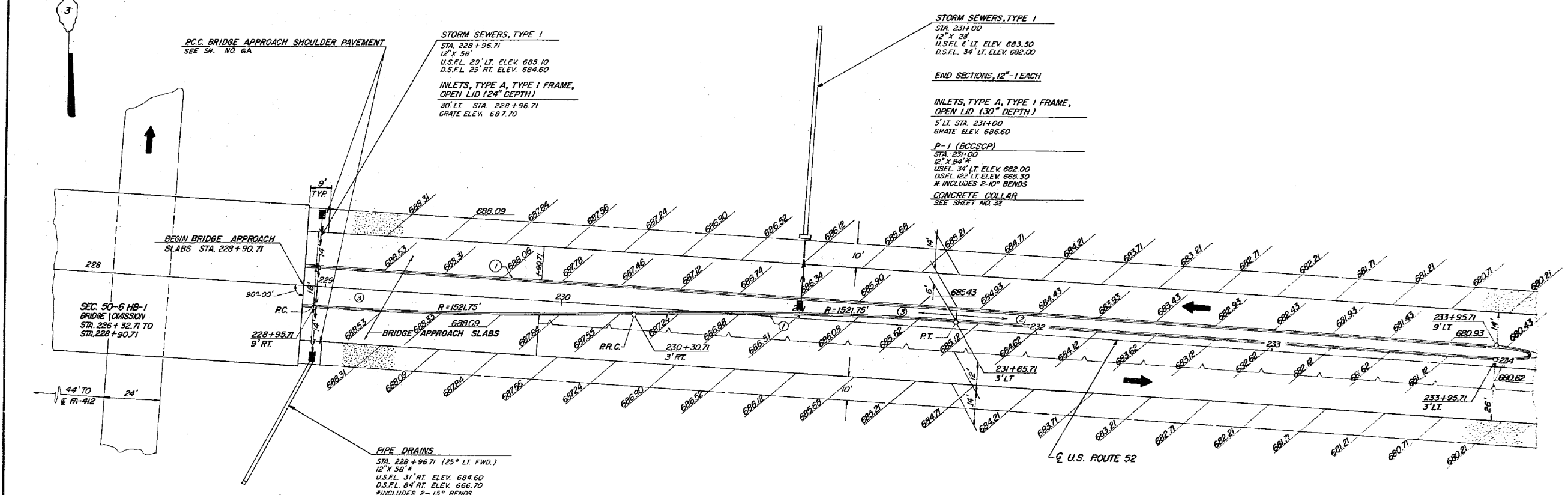


CHANNELIZATION DETAILS U.S. 52

STATE OF ILLINOIS DEPARTMENT OF TRANSPORTATION		DRAWN BY DATE S.P.M. 10-74 CHECKED BY DATE J.M.C. 11-75
FA-412	SEC. 50-6 HB-1	PROJECT NO.
LaSALLE	COUNTY	SHEET NO. 24
HOMER L. CHASTAIN & ASSOCIATES CONSULTING ENGINEERS DECATUR, ILLINOIS		

ROUTE NO.	SECTION	COUNTY	TOTAL SHEETS	SHEET NO.
FA. 412	50-6 HB-1	LaSALLE	34	25
FED. ROAD DIST. NO.	PLAN NO.	PROJECT		

CURVE DATA - (REVERSE CURVES)
 A = 5°09'23" R = 1521.3'
 D = 3845'54" L = 135.18'
 T = 67.63' E = 1.50'



P.C. BRIDGE APPROACH SHOULDER PAVEMENT
 SEE SH. NO. 6A

STORM SEWERS, TYPE 1
 STA. 228+96.71
 12" X 58"
 U.S.F.L. 29' LT. ELEV. 683.10
 D.S.F.L. 29' RT. ELEV. 684.60
INLETS, TYPE A, TYPE I FRAME, OPEN LID (24" DEPTH)
 30' LT. STA. 228+96.71
 GRATE ELEV. 687.70

STORM SEWERS, TYPE 1
 STA. 231+00
 12" X 28"
 U.S.F.L. 6' LT. ELEV. 683.50
 D.S.F.L. 34' LT. ELEV. 682.00

END SECTIONS, 12" - EACH

INLETS, TYPE A, TYPE I FRAME, OPEN LID (30" DEPTH)
 5' LT. STA. 231+00
 GRATE ELEV. 686.60
P-1 (BCCSCP)
 STA. 231+00
 12" X 84"
 U.S.F.L. 34' LT. ELEV. 682.00
 D.S.F.L. 122' LT. ELEV. 665.30
 * INCLUDES 2-10° BENDS
CONCRETE COLLAR
 SEE SHEET NO. 32

BEGIN BRIDGE APPROACH SLABS STA. 228+90.71

SEC. 50-6 HB-1 BRIDGE OMISSION
 STA. 226+32.71 TO STA. 228+90.71

PIPE DRAINS
 STA. 228+96.71 (25' LT. FWD.)
 12" X 58"
 U.S.F.L. 31' RT. ELEV. 684.60
 D.S.F.L. 84' RT. ELEV. 666.70
 * INCLUDES 2-15° BENDS

END SECTIONS, 12" - EACH

INLETS, TYPE A, TYPE I FRAME, OPEN LID (30" DEPTH)
 30' RT. STA. 228+96.71
 GRATE ELEV. 687.70

LEFT TURN LANE OFFSETS

STATION	OFFSETS FROM C.	
	L.T.	RT.
228+96.71 B BK		9.00
229+00.00		8.99
229+25.00		8.72
229+50.00		8.03
229+75.00		6.93
229+90.71		6.03
230+00.00		5.42
230+25.00		3.50
230+30.71		3.00
230+50.00		1.41
230+75.00		0.89
231+00.00		1.58
231+25.00		2.46
231+50.00		2.92
231+65.71 B AMD		3.00

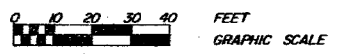
FOR INFORMATION ONLY

LEGEND

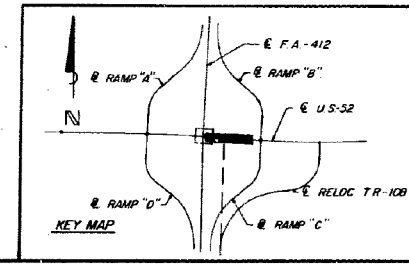
- ① COMBINATION CONCRETE CURB & GUTTER, TYPE M 6.06
- ② CONCRETE MEDIAN, TYPE M 6.06 (SOLID)
- ③ CONCRETE MEDIAN SURFACE, 4"

LONGITUDINAL METAL JOINT

STABILIZED SHOULDER
 EDGE OF PAVEMENT ELEVATIONS

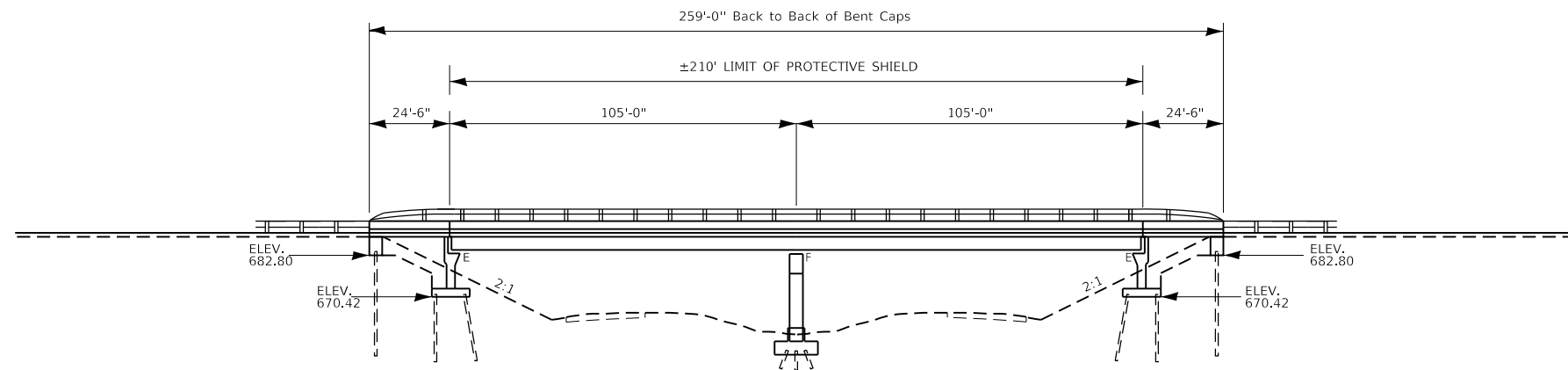


CHANNELIZATION DETAILS U.S. 52

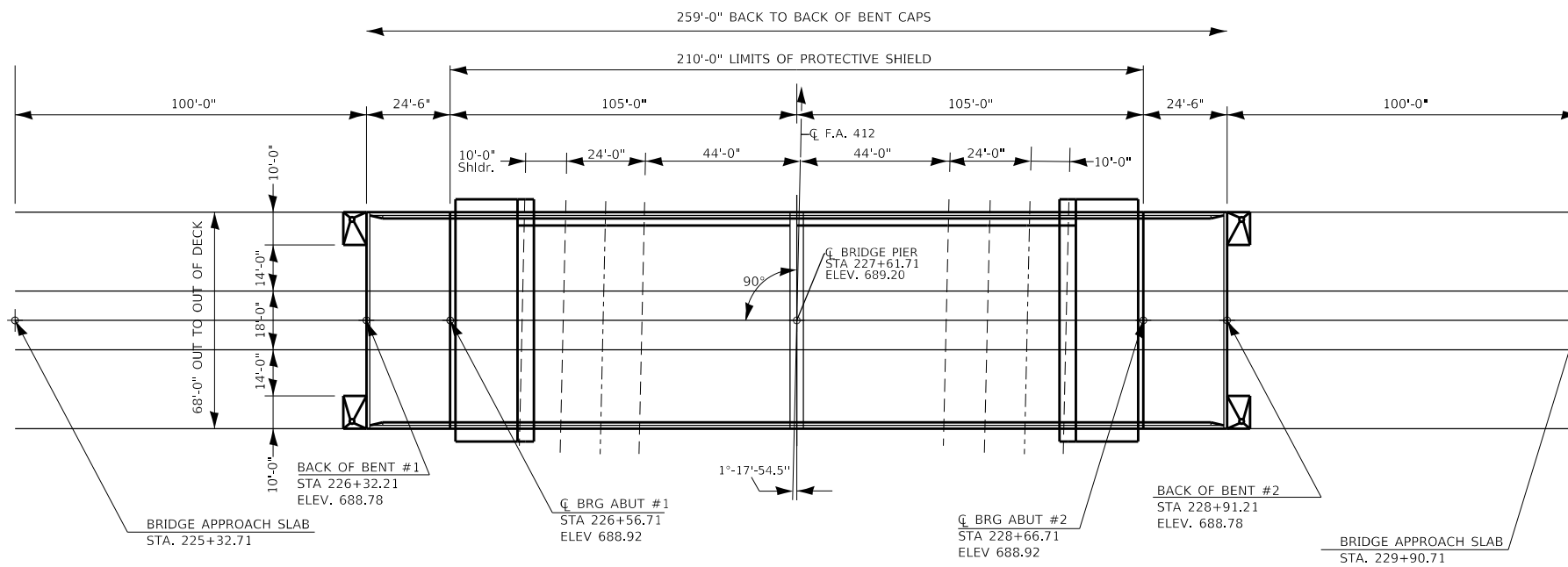


NOTE: ALL DIMENSIONS ARE TO THE EDGE OF PAVEMENT, UNLESS OTHERWISE NOTED

REVISIONS		STATE OF ILLINOIS DEPARTMENT OF TRANSPORTATION		DESIGNED BY	DATE
1		FA. 412	SEC. 50-6 HB-1	J.M.C.	11-75
2		LaSALLE	COUNTY		
3		HOMER L. CHASTAIN & ASSOCIATES CONSULTING ENGINEERS DECATUR, ILLINOIS			
4					
5					
6					
7					
8					
9					
10					



ELEVATION



PLAN S.N. 050-0171

GENERAL NOTES

PLAN DIMENSIONS AND DETAILS RELATIVE TO EXISTING PLANS ARE SUBJECT TO NOMINAL CONSTRUCTION VARIATIONS. THE CONTRACTOR SHALL FIELD VERIFY EXISTING DIMENSIONS AND DETAILS AFFECTING NEW CONSTRUCTION AND MAKE NECESSARY APPROVED ADJUSTMENTS PRIOR TO CONSTRUCTION OR ORDERING OF MATERIALS. SUCH VARIATIONS SHALL NOT BE CAUSE FOR ADDITIONAL COMPENSATION FOR A CHANGE IN SCOPE OF WORK; HOWEVER, THE CONTRACTOR WILL BE PAID FOR THE QUANTITY ACTUALLY FURNISHED AT THE UNIT PRICE BID FOR THE WORK.

EXISTING REINFORCEMENT BARS EXTENDING INTO THE REMOVAL AREA SHALL BE CLEANED, STRAIGHTENED AND INCORPORATED INTO THE NEW CONSTRUCTION. ANY REINFORCEMENT BARS THAT ARE DAMAGED DURING CONCRETE REMOVAL SHALL BE REPLACED WITH AN APPROVED BAR SPLICER OR ANCHORAGE SYSTEM. COST INCLUDED WITH CONCRETE REMOVAL.

AREAS OF DECK REPAIRS SHOWN ARE ESTIMATED. THE ENGINEER SHALL SHOW ACTUAL LOCATIONS OF DECK REPAIRS ON AS-BUILT PLANS.

PROTECTIVE COAT SHALL BE APPLIED TO THE NEW OVERLAY AND NEW CONCRETE AREAS OF THE DECK, MEDIAN AND PARAPETS ADJACENT TO THE JOINTS ONLY.

PRIOR TO POURING THE NEW CONCRETE DECK, ALL HEAVY OR LOOSE RUST, LOOSE MILL SCALE, AND OTHER LOSSE POTENTIALLY DETRIMENTAL FOREIGN MATERIAL SHALL BE REMOVED FROM THE SURFACE IN CONTACT WITH CONCRETE. TIGHTLY ADHERED PAINT SHALL REMAIN UNLESS OTHERWISE NOTED. REMOVAL SHALL BE ACCOMPLISHED BY METHODS THAT WILL NOT DAMAGE THE STEEL AND THE COST WILL BE INCLUDED WITH THE PAYITEM COVERING EMOVAL OF THE EXISTING CONCRETE.

CLEANING AND PAINTING OF THE EXISTING STRUCTURAL STEEL SHALL BE AS SPECIFIED IN THE SPECIAL PROVISION FOR "CLEANING AND PAINTING EXISTING STEEL STRUCTURES". ALL BEAMS, BEARINGS AND OTHER STRUCTURAL STEEL SHALL BE CLEANED PER NEAR WHITE BLAST CLEANING (SSPC-SP10), THE EXTERIOR SURFACE AND BOTTOM OF THE BOTTOM FLANGE OF THE FASCIA BEAM SHALL BE CLEANED PER COMMERCIAL POWER TOOL CLEANING (SPCC-SP15).

THE DESIGNATED AREAS CLEANED PER NEAR WHITE BLAST CLEANING (SPCC-SP 10) AND PER COMMERCIAL OPOWER TOOL CLEANING (SSPC-SP15) SHALL BE PAINTED ACCORDING TO THE REQUIREMENTS OF PAINT SYSTEM 1-OZ/E/U. THE COLOR OF THE FINAL FINISH COAT SHALL BE INTERSTATE GREEN, MUNSELL No. 7.5G4/8.

A MINIMUM OF 2 AIR MONITORS WILL BE REQYURED TO MONITOR ABRASSIVE BLASATING OPERATIONS AT THIS SITE. SEE SPECIAL PROVISIONS FOR "CONTAINMENT AND DISPOSAL OF LEAD PAINT CLEANING RESIDUE".

SSPC QP1 AND SSPC QP2 CERTIFICATION IS REQUIRED FOR THIS CONTRACT.

TOTAL BILL OF MATERIALS

ITEM	UNIT	QUANTITY
HOT-MIX ASPHALT SURFACE REMOVAL (DECK)	SQ YD	1303
PROTECTIVE SHIELD	SQ YD	724
BRIDGE DECK GROOVING	SQ YD	1303
BRIDGE DECK LATEX CONCRETE OVERLAY 2 1/4"	SQ YD	1303
BRIDGE DECK SCARIFICATION 3/4"	SQ YD	1303
PROTECTIVE COAT	SQ YD	1796
DECK SLAB REPAIR (FULL DEPTH TYPE I)	SQ YD	5
DECK SLAB REPAIR (FULL DEPTH TYPE II)	SQ YD	35
CONCRETE REMOVAL	CU YD	17.5
CONCRETE SUPERSTRUCTURE	CU YD	19.1
REINFORCEMENT BARS, EPOXY COATED	POUND	2076
EPOXY CRACK INJECTION	FT	63
STRUCTURAL REPAIR OF CONCRETE (DEPTH EQUAL TO OR LESS THAN 5")	SQ FT	289
PREFORMED JOINT STRIP SEAL	FOOT	134
BAR SPLICERS	EACH	30
CLEANING AND PAINTING STEEL BRIDGE No. 1	L. SUM	1
CONTAINMENT AND DISPOSAL OF LEAD PAINT RESIDUE No. 1	L. SUM	1

MODEL: Default
 FILE: \\nascoj\pub\aroom\dat\illinois\pwr\DOT\Documents\DOT_Offices\Illinet\3\Projects\0366\00\Cadd\0366\00-shc\General_Plan.dgn

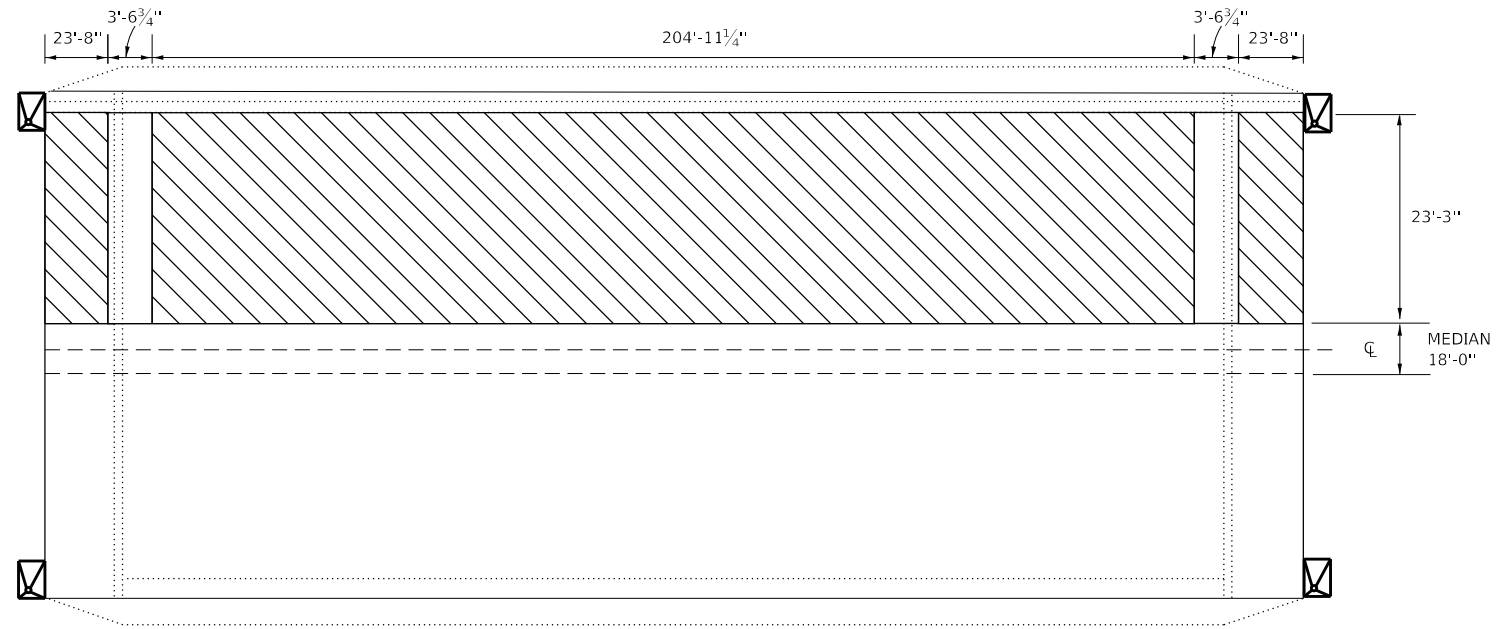
USER NAME = NOLASCOCJ	DESIGNED -	REVISED - 9/30/2020 SC
PLOT SCALE = 100.0000' / in.	DRAWN -	REVISED -
PLOT DATE = 12/4/2020	CHECKED -	REVISED -
	DATE -	REVISED -

**STATE OF ILLINOIS
DEPARTMENT OF TRANSPORTATION**


GENERAL PLAN

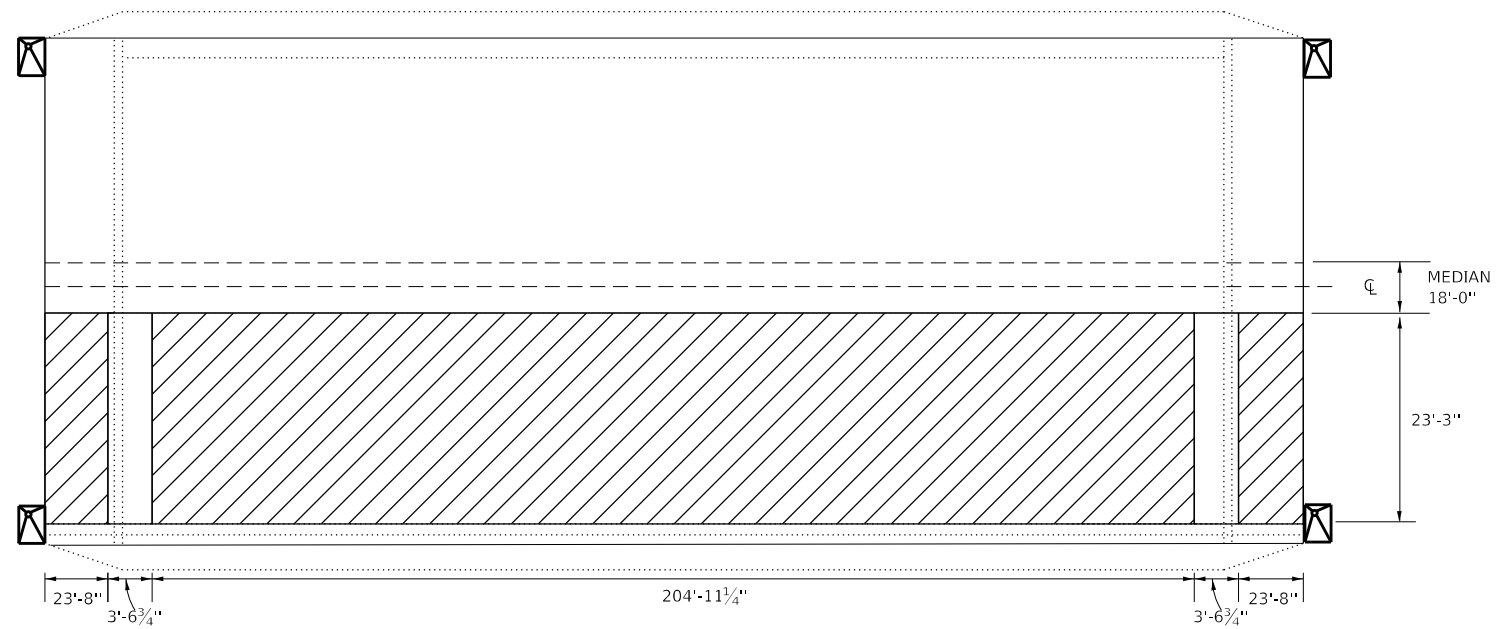
SCALE: SHEET OF SHEETS STA. TO STA.

F.A.I. RTE.	SECTION	COUNTY	TOTAL SHEETS	SHEET NO.
39	(50-6HB-1)I-3	LASALLE	34	14
CONTRACT NO. 66L00			ILLINOIS FED. AID PROJECT	



DECK SCARIFICATION STAGE 1

 STAGE I & II - DECK SCARIFICATION 3/4"



DECK SCARIFICATION STAGE 2

BILL OF MATERIALS

ITEM	UNIT	QUANTITY
BRIDGE DECK SCARIFICATION 3/4"	SQ YD	1303

MODEL: Default
 FILE: \\nas1c2.pw.us.ibm.com\data\illinois\pwr\DOT\Documents\DOT_Offices\District_3\Projects\0366\00\CADD\data\0366_00-sch-bridge_surface_removal

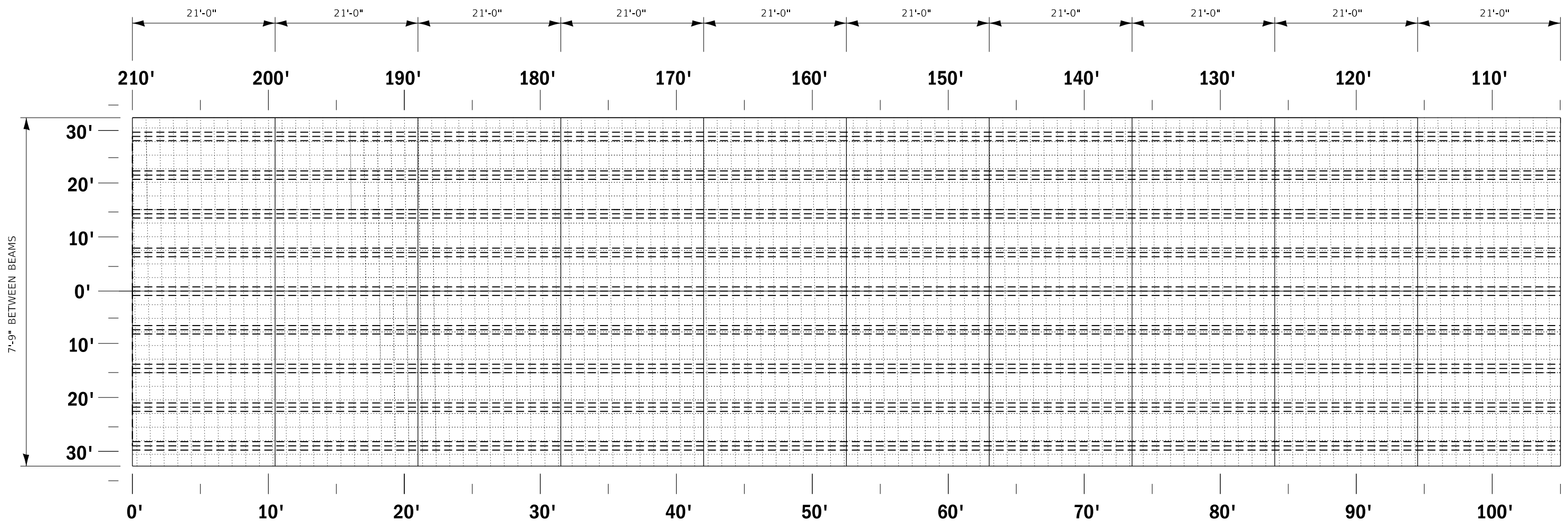
USER NAME = NOLASCOCJ	DESIGNED -	REVISED -
	DRAWN -	REVISED -
PLOT SCALE = 100.0000' / in.	CHECKED -	REVISED -
PLOT DATE = 12/4/2020	DATE -	REVISED -

**STATE OF ILLINOIS
DEPARTMENT OF TRANSPORTATION**

BRIDGE SURFACE REMOVAL

SCALE: SHEET OF SHEETS STA. TO STA.

F.A.I. RTE.	SECTION	COUNTY	TOTAL SHEETS	SHEET NO.
39	(50-6HB-1)I-3	LASALLE	34	16
CONTRACT NO. 66L00				
		ILLINOIS	FED. AID PROJECT	



**PLAN 050-0171
AT EAST BOUND**

GENERAL NOTES

AREAS OF DECK REPAIR SHOWN ARE ESTIMATE. THE ENGINEER SHALL SHOW ACTUAL LOCATIONS OF DECK REPAIR ON "AS BUILT" PLANS.

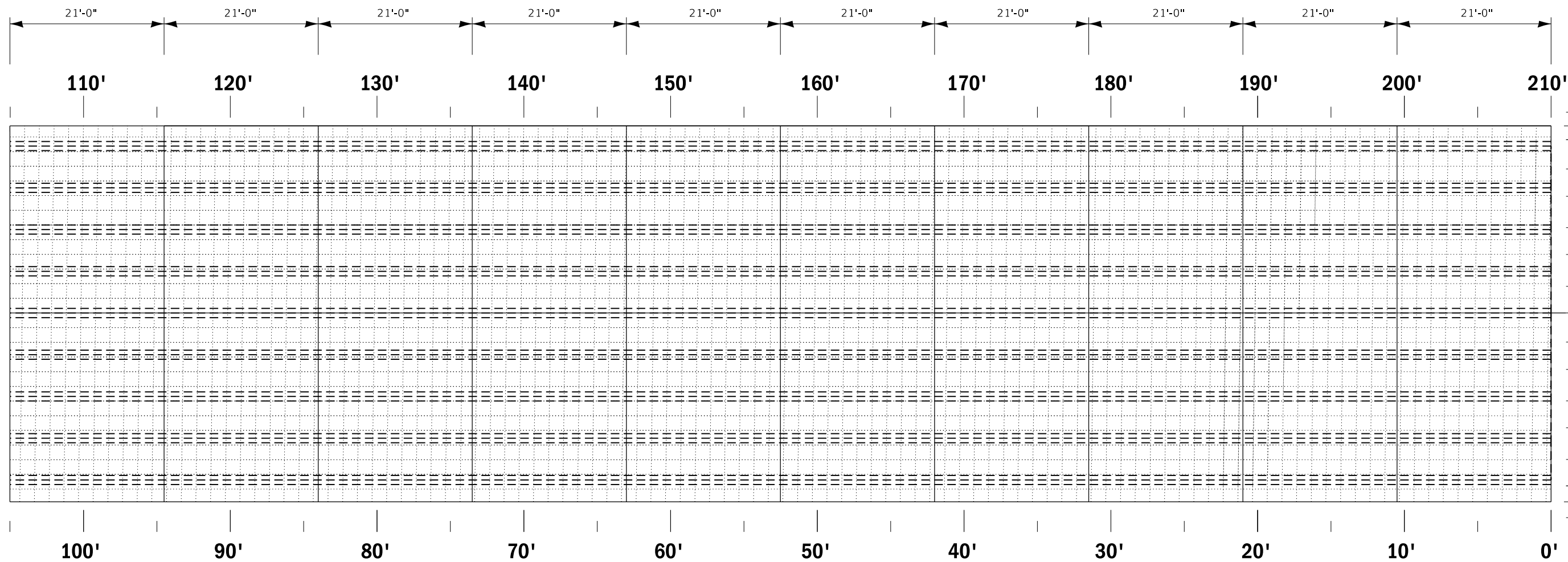
MODEL: Default
 FILE: h:\a\c\p\pub\lanroom.dwg
 PROJECT: 03661.00\CADD\DATA\03661.00-sh-check_sbb_repair_plan_AS_BUILT

USER NAME = NOLASCOCJ	DESIGNED -	REVISED -
	DRAWN -	REVISED -
PLOT SCALE = 100.0000' / in.	CHECKED -	REVISED -
PLOT DATE = 10/16/2020	DATE -	REVISED -

**STATE OF ILLINOIS
DEPARTMENT OF TRANSPORTATION**

DECK SLAB REPAIR PLAN "AS BUILT"			
SCALE:	SHEET 1	OF 2 SHEETS	STA. TO STA.

F.A.I. RTE.	SECTION	COUNTY	TOTAL SHEETS	SHEET NO.
39	(50-6HB-1)I-3	LASALLE	34	20
CONTRACT NO. 66L00				
ILLINOIS		FED. AID PROJECT		



GENERAL NOTES

AREAS OF DECK REPAIR SHOWN ARE ESTIMATE. THE ENGINEER SHALL SHOW ACTUAL LOCATIONS OF DECK REPAIR ON "AS BUILT" PLANS.

**PLAN 050-0171
AT WEST BOUND**

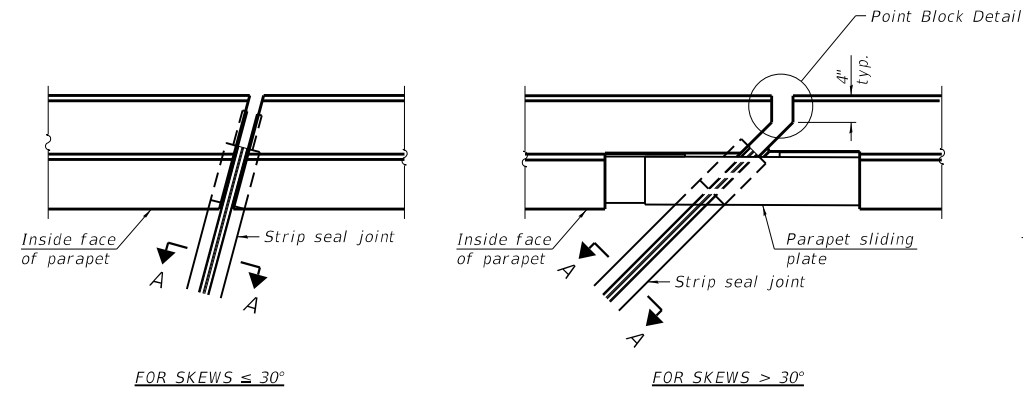
MODEL: Default
 FILE: h:\a\c\p\pub\lanroom.dwg\illinois.gov\PWIDOT\Documents\DOT_Offices\District_3\Projects\0366L00\CADD\0366L00-shc-check_sbb_repair_plan_AS_BUILT

USER NAME = NOLASCOCJ	DESIGNED -	REVISED -
	DRAWN -	REVISED -
PLOT SCALE = 100.0000' / in.	CHECKED -	REVISED -
PLOT DATE = 10/16/2020	DATE -	REVISED -

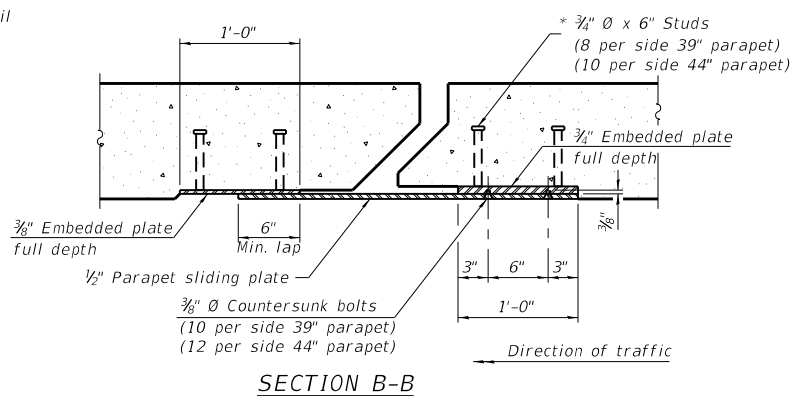
**STATE OF ILLINOIS
DEPARTMENT OF TRANSPORTATION**

DECK SLAB REPAIR PLAN "AS BUILT"			
SCALE:	SHEET 2	OF 2	SHEETS
	STA.		TO STA.

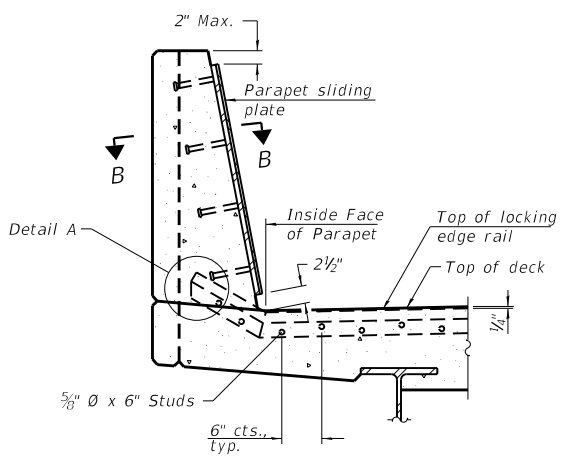
F.A.I. RTE.	SECTION	COUNTY	TOTAL SHEETS	SHEET NO.
39	(50-6HB-1)I-3	LASALLE	34	21
CONTRACT NO. 66L00				
ILLINOIS		FED. AID PROJECT		



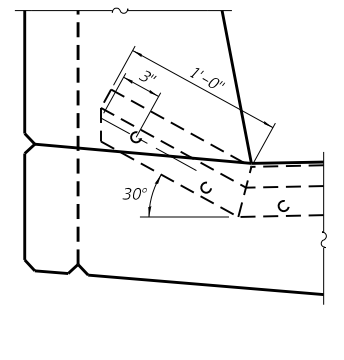
PLAN AT PARAPET



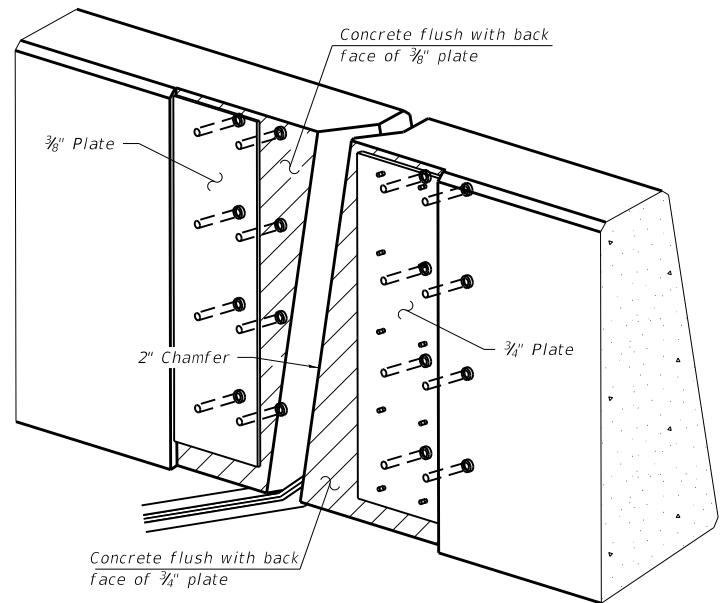
SECTION B-B



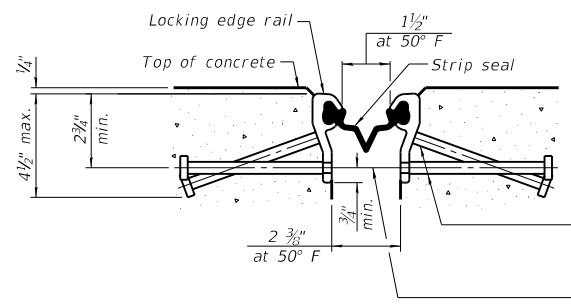
SECTION A-A
(Skews $> 30^\circ$ shown. Skews $\leq 30^\circ$ similar except as shown in plan view.)



DETAIL A



TRIMETRIC VIEW
(Showing embedded plates only)



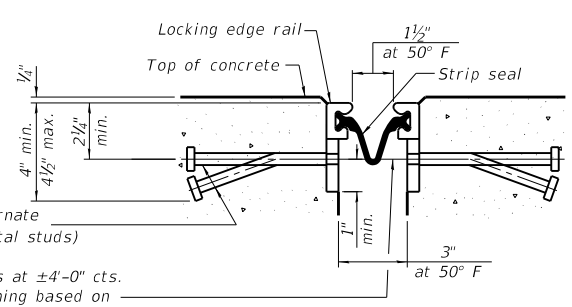
SHOWING ROLLED RAIL JOINT

* 3/8" ϕ x 6" studs @ 6" cts. (alternate angled/bent studs with horizontal studs)

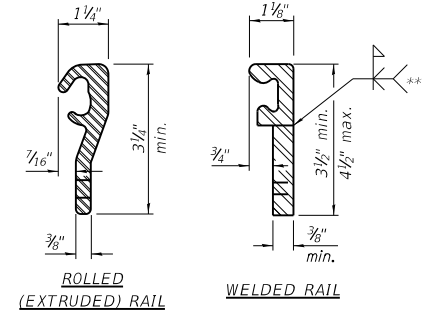
3/8" ϕ threaded rods in 7/16" ϕ holes at ± 4 -0" cts. for holding the proper joint opening based on the temperature during the deck pour. Place to miss studs. All rods shall be burned, or sawed off flush with the plates after concrete is set.

SECTION A-A

* Granular or solid flux filled headed studs conforming to Article 1006.32 of the Std. Specs., automatically end welded.

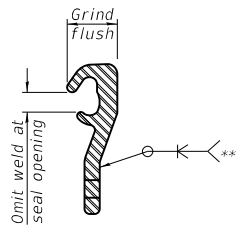


SHOWING WELDED RAIL JOINT



LOCKING EDGE RAILS

** Back gouge not required if complete joint penetration is verified by mock-up.



LOCKING EDGE RAIL SPLICE

The inside of the locking edge rail groove shall be free of weld residue. Rolled rail shown, welded rail similar.

BILL OF MATERIAL

Item	Unit	Total
Preformed Joint Strip Seal	Foot	134

(Sheet 1 of 3)

PREFORMED JOINT STRIP SEAL - SIDEWALK
STRUCTURE NO. 050-0171

MODEL: Default
FILE: h:\mhc\pub\planroom\dtd\illinois.gov\PIWIDOT\Documents\DOT_Offices\Illin\050-0171-Strip Seal - Rail Post - Spillers
PROJECT: 03661.00\CADD\03661.00-sh-strip-seal-rail-post-spillers

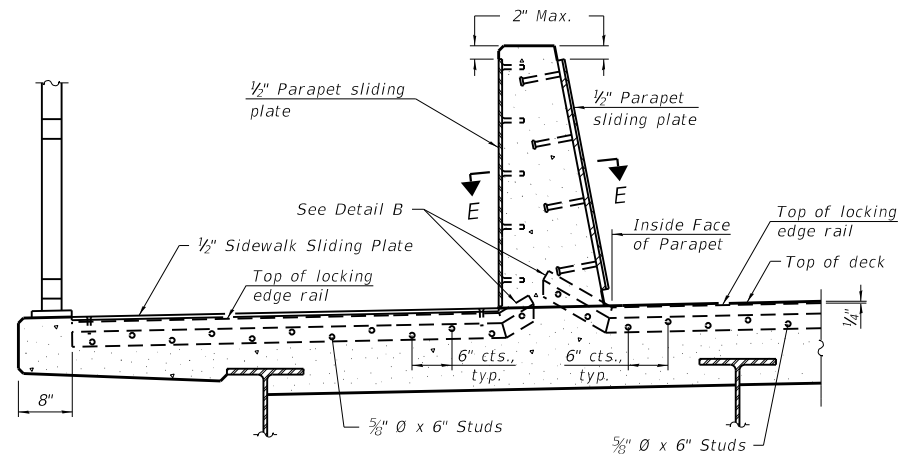
USER NAME = NOLASCOCJ	DESIGNED -	REVISED -
	DRAWN -	REVISED -
PLOT SCALE = 100.0000' / in.	CHECKED -	REVISED -
PLOT DATE = 12/4/2020	DATE -	REVISED -

STATE OF ILLINOIS
DEPARTMENT OF TRANSPORTATION

PREFORMED JOINT STRIP SEAL

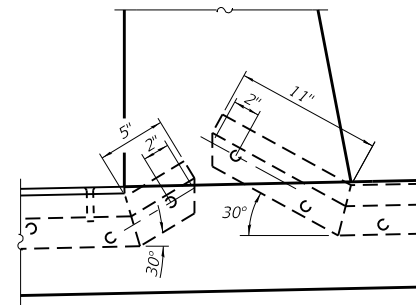
SCALE: SHEET 1 OF 3 SHEETS STA. TO STA.

F.A.I. RTE.	SECTION	COUNTY	TOTAL SHEETS	SHEET NO.
39	(50-6HB-1)I-3	LASALLE	34	22
CONTRACT NO. 66L00				
ILLINOIS FED. AID PROJECT				

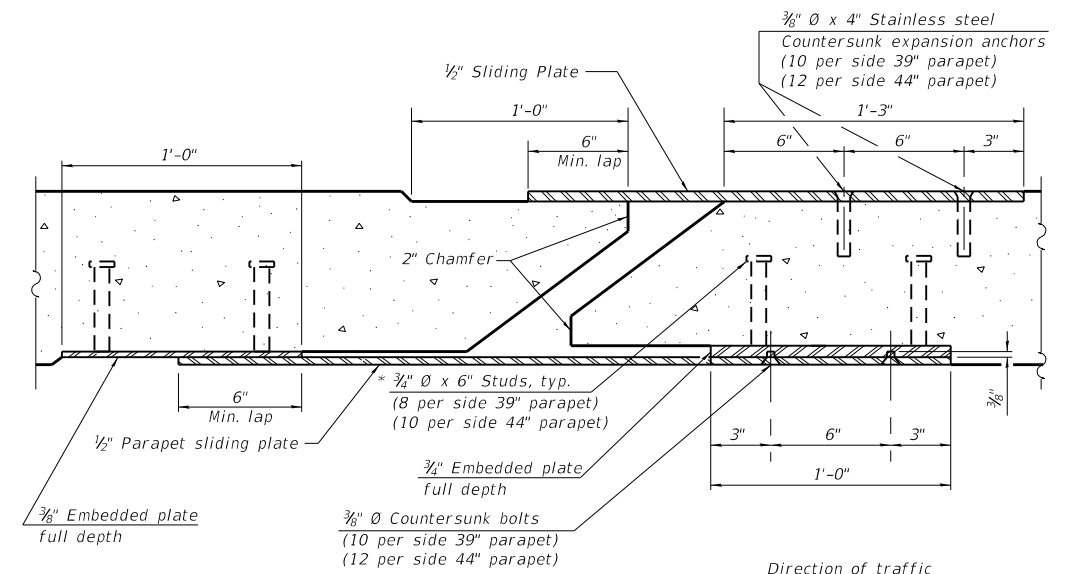


SECTION AT DECK LEVEL SIDEWALK

(Skews > 30° shown. Skews ≤ 30° similar except as shown in plan view.)

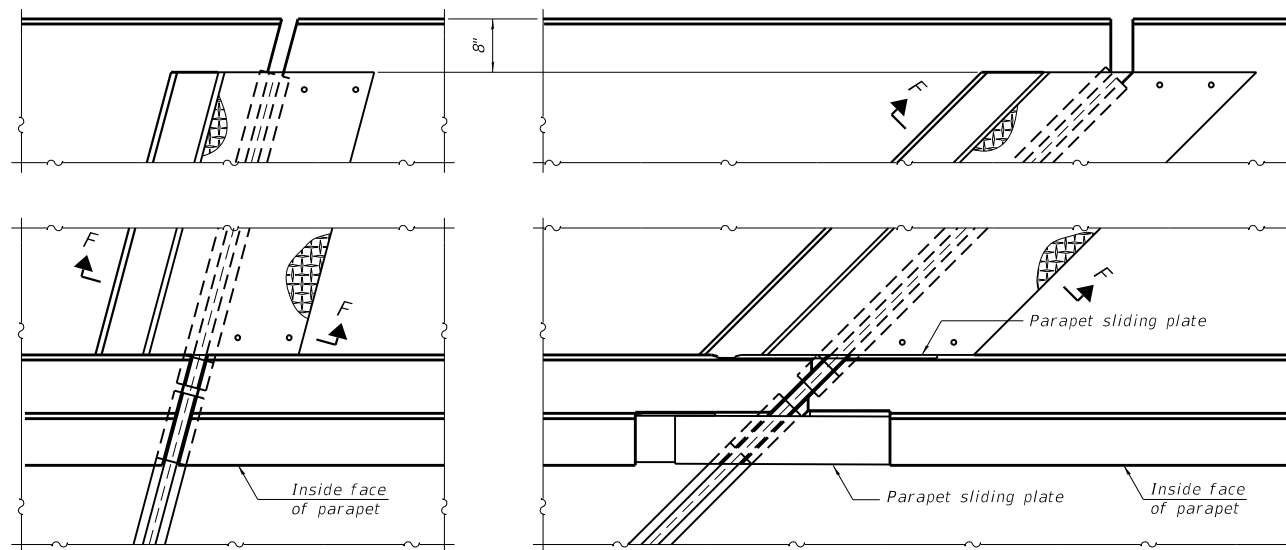


DETAIL B



SECTION E-E

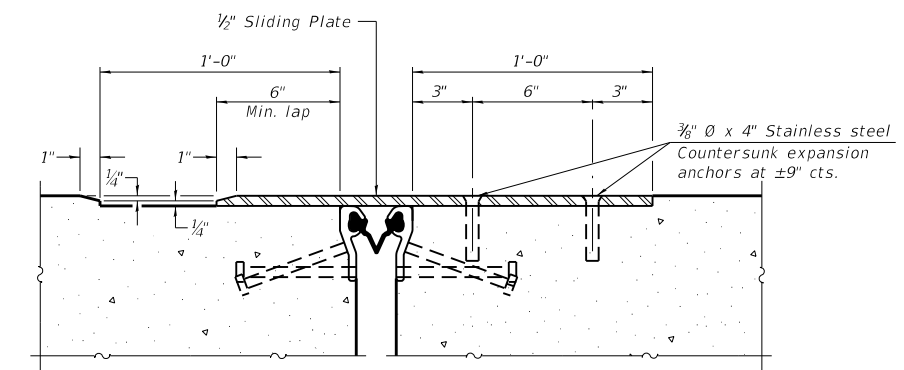
Direction of traffic



(FOR SKEWS ≤ 30°)

(FOR SKEWS > 30°)

PLAN AT DECK LEVEL SIDEWALK



SECTION F-F

(Sheet 3 of 3)
PREFORMED JOINT STRIP SEAL - SIDEWALK
 STRUCTURE NO. 050-0171

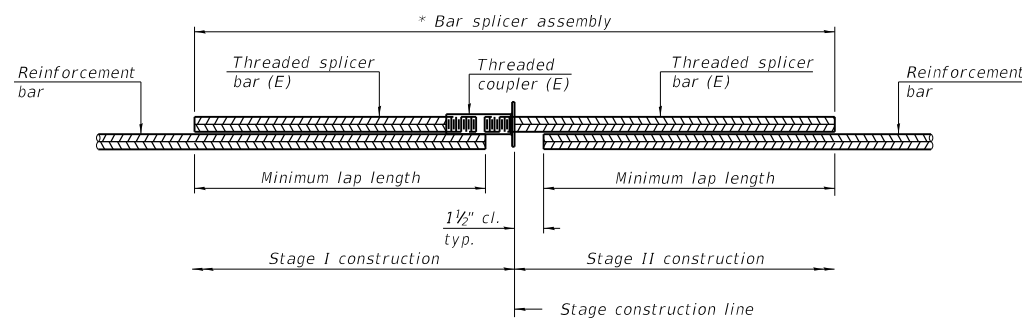
MODEL: Default
 FILE: h:\a\c\p\pub\room\dat\illinois.gov\PI\DOT\Documents\DOT_Offices\Illin\c\050-0171\seal_rail_post_spillers

USER NAME = NOLASCOCJ	DESIGNED -	REVISED -
	DRAWN -	REVISED -
PLOT SCALE = 100,0000' / in.	CHECKED -	REVISED -
PLOT DATE = 12/4/2020	DATE -	REVISED -

STATE OF ILLINOIS
DEPARTMENT OF TRANSPORTATION

SCALE: SHEET 3 OF 3 SHEETS STA. TO STA.

F.A.I. RTE.	SECTION	COUNTY	TOTAL SHEETS	SHEET NO.
39	(50-6HB-1)I-3	LASALLE	34	22 B
CONTRACT NO. 66L00				
ILLINOIS FED. AID PROJECT				

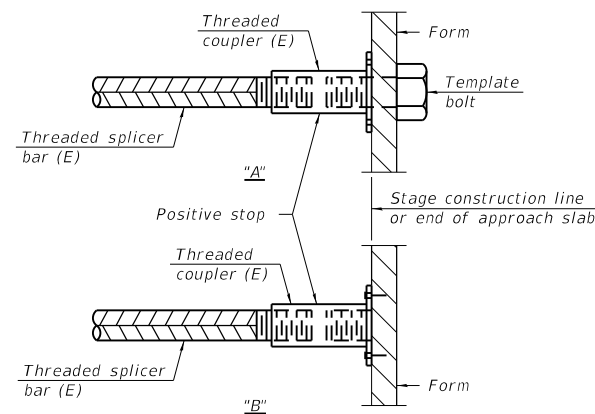


STANDARD BAR SPLICER ASSEMBLY PLAN
(All components shall be provided from one supplier)

Threaded splicer bar length = min. lap length + 1 1/2" + thread length

* Epoxy not required on Bar Splicer Assembly components used in conjunction with black bars.

Location	Bar size	No. assemblies required	Minimum lap length
APP SLAB & MEDIAN TOP	#5	4	3'-7"
DECK SLAB & MEDIAN TOP	#6	12	4'-4"
DECK SLAB & MEDIAN BOT	#6	14	3'-10"



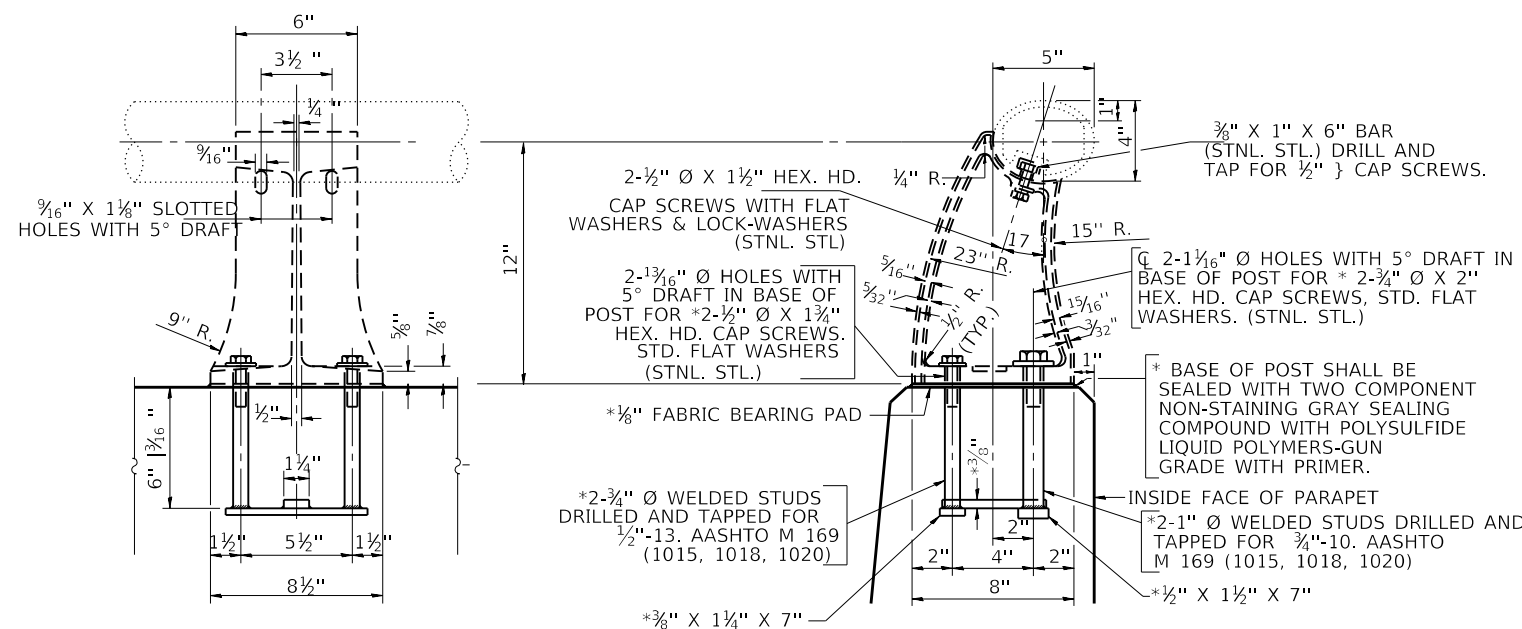
INSTALLATION AND SETTING METHODS

"A" : Set bar splicer assembly by means of a template bolt.
 "B" : Set bar splicer assembly by nailing to wood forms or cementing to steel forms.
 (E) : Indicates epoxy coating.

Notes:
 Splicer bars shall be deformed with threaded ends and have a minimum 60 ksi yield strength.
 All reinforcement shall be lapped and tied to the splicer bars.
 Bar splicer assemblies shall be epoxy coated according to the requirements for reinforcement bars. See Section 508 of the Standard Specifications.
 See approved list of bar splicer assemblies and mechanical splicers for alternatives.

STANDARD MECHANICAL SPLICER

Location	Bar size	No. assemblies required



RAIL POST DETAILS

*NEW RAIL POST ANCHORAGE DEVICES WILL BE REQUIRED AT EACH LOCATION WHERE POST ARE CONNECTED TO NEW CONSTRUCTION. COST INCLUDED WITH CONCRETE SUPERSTRUCTURE.

MODEL: Default
 FILE: \\nas01c.psu.edu\lanroom\data\illinois.gov\PROJECTS\DOT\Documents\DOT\Office\Drawings\3\Project\366\00\CADD\data\366\00-shc-crfp_seal_rail_post_splicers

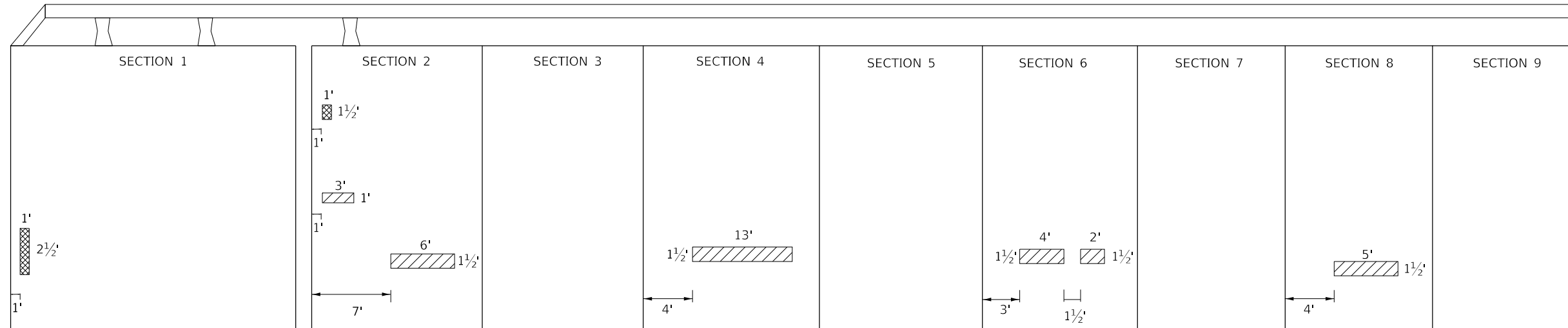
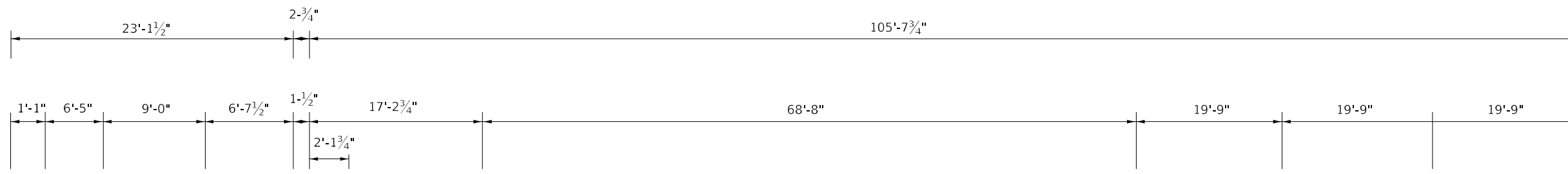
USER NAME = NOLASCOCJ	DESIGNED - JO	REVISED - 9/30/2020 SC
	DRAWN - CN	REVISED -
PLOT SCALE = 100.0000' / in.	CHECKED -	REVISED -
PLOT DATE = 10/16/2020	DATE -	REVISED -

**STATE OF ILLINOIS
DEPARTMENT OF TRANSPORTATION**

**BAR SPLICER ASSEMBLY AND MECHANICAL SPLICER DETAILS
& RAIL POST DETAIL**

SCALE: SHEET OF SHEETS STA. TO STA.

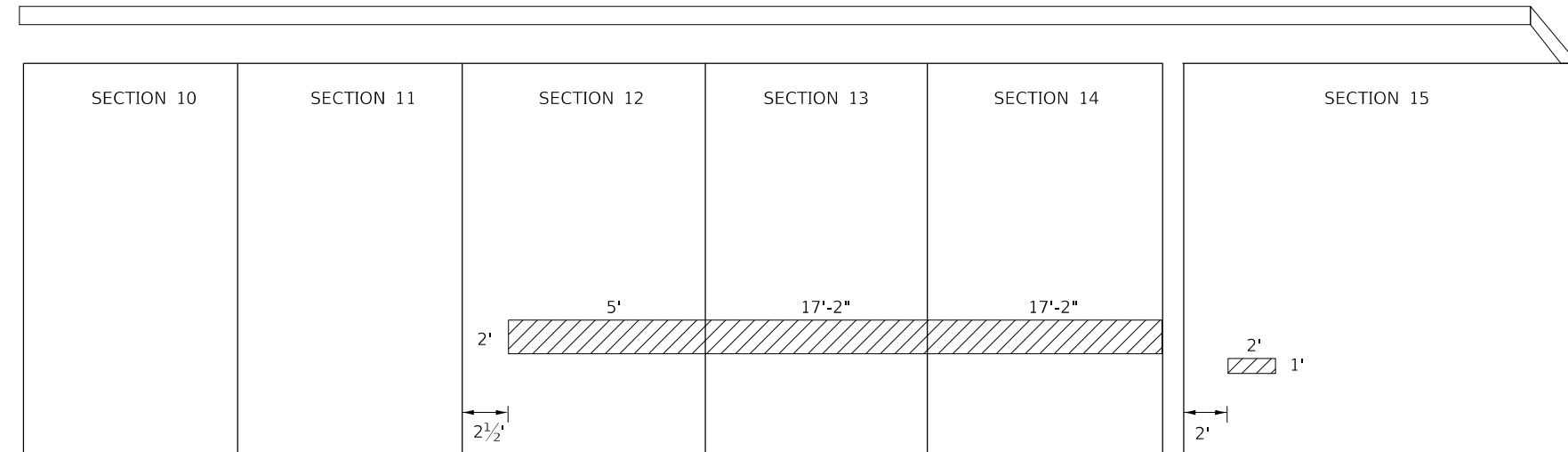
F.A.I. RTE.	SECTION	COUNTY	TOTAL SHEETS	SHEET NO.
39	(50-6HB-1)I-3	LASALLE	34	23
CONTRACT NO. 66L00				
ILLINOIS FED. AID PROJECT				



LEGEND

WESTBOUND (NORTH PARAPET)

EASTBOUND (SOUTH PARAPET)



PARAPET REPAIR SN 050-0171			
SECTION NO	LENGTH FOOT	WIDTH FOOT	STRUCTURAL REPAIR OF CONCRETE (DEPTH EQUAL TO OR LESS THAN 5")
			SQ FT
SOUTH PARAPET (EAST BOUND)			
2	3.0	1.0	3
2	6.0	1.5	9
3	3.0	1.5	5
3	4.0	1.5	6
5	13.0	1.5	20
6	4.0	1.5	6
6	2.0	1.5	3
12	5.0	1.5	8
13	17.2	2.0	34
14	17.2	2.0	34
15	2.0	1.0	2
SUBTOTAL			130
NORTH PARAPET (WEST ABUTMENT)			
1	1.0	2.5	3
2	1.0	1.5	2
SUBTOTAL			5
TOTAL			135

BILL OF MATERIALS

ITEM	UNIT	QUANTITY
STRUCTURAL REPAIR OF CONCRETE (DEPTH EQUAL TO OR LESS THAN 5")	SQ FT	135

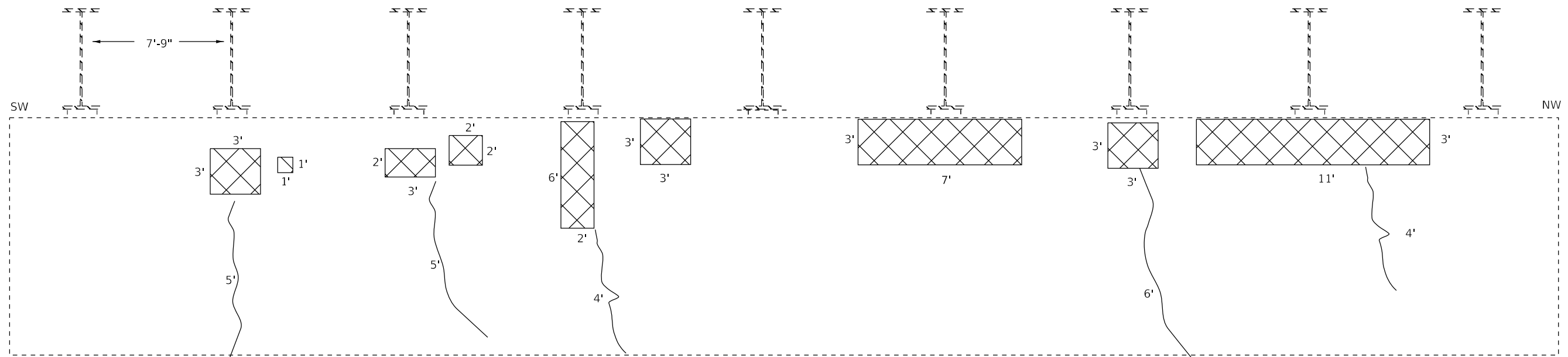
MODEL: Default
 FILE: \\nas01c01.pw.us.ibm.com\data\illinois\pwr\DOT\Documents\DOT_Offices\Illin\ct 3\Projects\0366\00\CADD\data\0366\00-sb-parapet_repair

USER NAME = NOLASCOCJ	DESIGNED -	REVISED -
PLOT SCALE = 100.0000' / in.	DRAWN -	REVISED -
PLOT DATE = 10/16/2020	CHECKED -	REVISED -
	DATE -	REVISED -

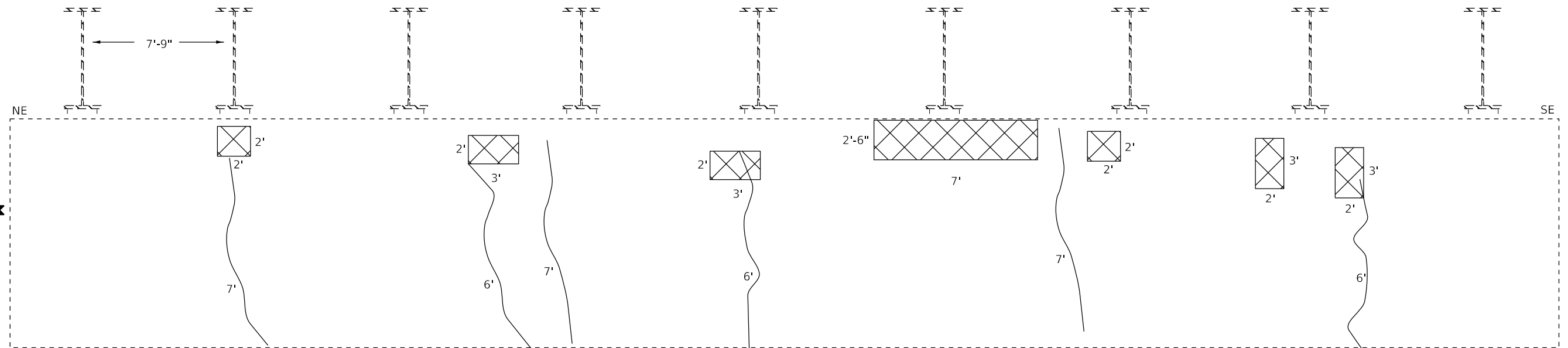
**STATE OF ILLINOIS
DEPARTMENT OF TRANSPORTATION**

PARAPET REPAIR	
SCALE:	SHEET OF SHEETS STA. TO STA.

F.A.I. RTE.	SECTION	COUNTY	TOTAL SHEETS	SHEET NO.
39	(50-6HB-1)I-3	LASALLE	34	24
CONTRACT NO. 66L00				
ILLINOIS FED. AID PROJECT				

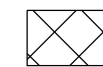


WEST ABUTMENT



EAST ABUTMENT

LEGEND



STRUCTURAL REPAIR OF CONCRETE
(DEPTH EQUAL TO OR LESS THAN 5")



EPOXY CRACK INJECTION

BILL OF MATERIALS

ITEM	UNIT	QUANTITY
EPOXY CRACK INJECTION	FT	63
STRUCTURAL REPAIR OF CONCRETE (DEPTH EQUAL TO OR LESS THAN 5")	SQ FT	154

MODEL: Default
 FILE: Abutment_Repairs\pilot\DOT\Documents\DOT_Offices\Director_3\Projects\0366L00\CADD\0366L00-shc-abutment_repair

USER NAME = NOLASCOCJ	DESIGNED -	REVISED -
PLOT SCALE = 100,0000' / in.	DRAWN -	REVISED -
PLOT DATE = 12/4/2020	CHECKED -	REVISED -
	DATE -	REVISED -

**STATE OF ILLINOIS
DEPARTMENT OF TRANSPORTATION**

ABUTMENT REPAIR DETAIL

SCALE: SHEET OF SHEETS STA. TO STA.

F.A.I. RTE.	SECTION	COUNTY	TOTAL SHEETS	SHEET NO.
39	(50-6HB-1)I-3	LASALLE	34	25
CONTRACT NO. 66L00				
ILLINOIS FED. AID PROJECT				

STRUCTURE NO. 050-0171

TRAFFIC CONTROL AND PROTECTION

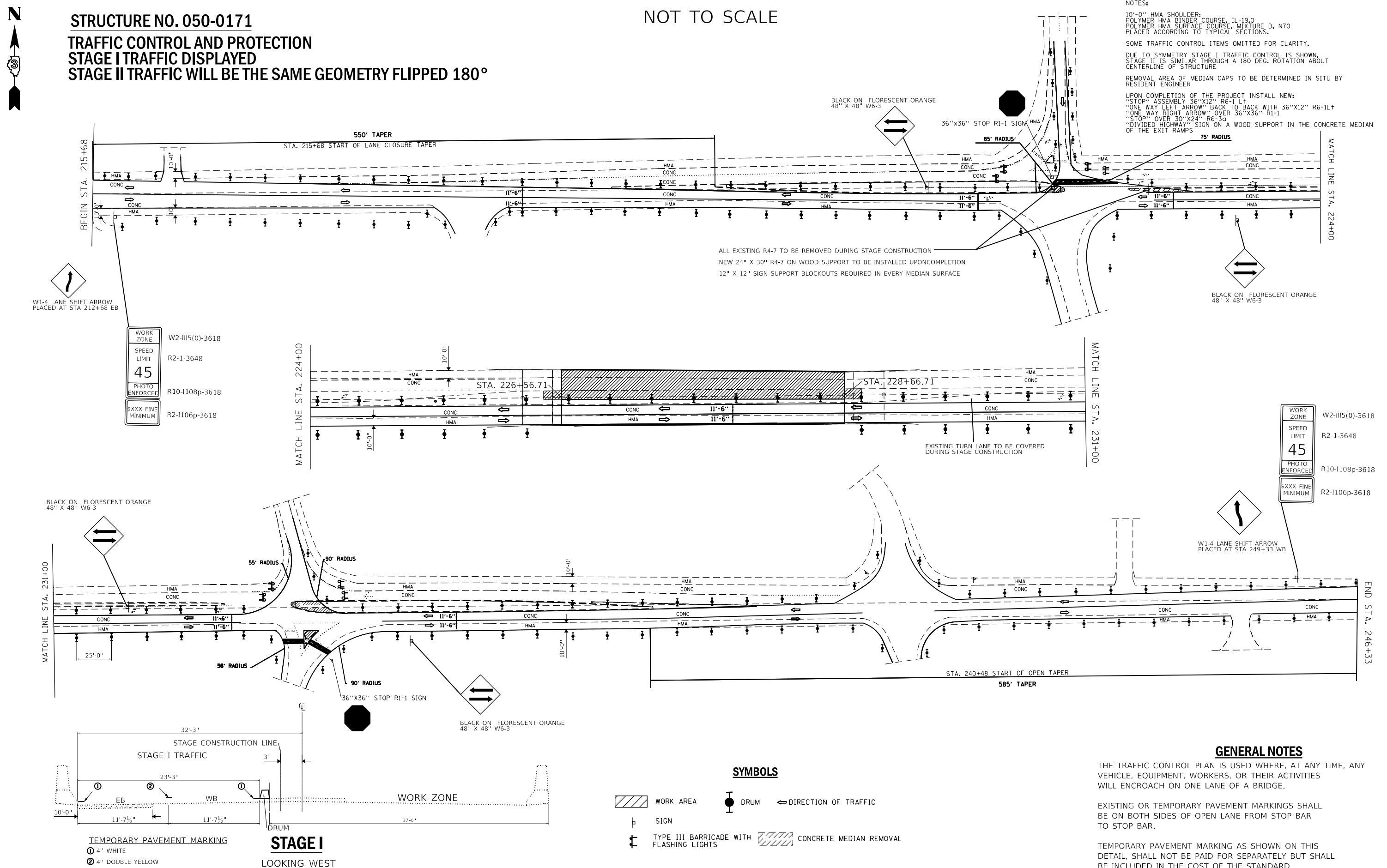
STAGE I TRAFFIC DISPLAYED

STAGE II TRAFFIC WILL BE THE SAME GEOMETRY FLIPPED 180°

NOT TO SCALE

NOTES:

- 10'-0" HMA SHOULDER;
- POLYMER HMA BINDER COURSE, IL-19.0
- POLYMER HMA SURFACE COURSE, MIXTURE D, N70
- PLACED ACCORDING TO TYPICAL SECTIONS.
- SOME TRAFFIC CONTROL ITEMS OMITTED FOR CLARITY.
- DUE TO SYMMETRY STAGE I TRAFFIC CONTROL IS SHOWN.
- STAGE II IS SIMILAR THROUGH A 180 DEG. ROTATION ABOUT CENTERLINE OF STRUCTURE.
- REMOVAL AREA OF MEDIAN CAPS TO BE DETERMINED IN SITU BY RESIDENT ENGINEER.
- UPON COMPLETION OF THE PROJECT INSTALL NEW:
 - "STOP" ASSEMBLY 36"X12" R6-1 L+
 - "ONE WAY LEFT ARROW" BACK TO BACK WITH 36"X12" R6-1L+
 - "ONE WAY RIGHT ARROW" OVER 36"X36" R1-1
 - "STOP" OVER 30"X24" R6-3a
 - "DIVIDED HIGHWAY" SIGN ON A WOOD SUPPORT IN THE CONCRETE MEDIAN OF THE EXIT RAMP.



ALL EXISTING R4-7 TO BE REMOVED DURING STAGE CONSTRUCTION
 NEW 24" X 30" R4-7 ON WOOD SUPPORT TO BE INSTALLED UPON COMPLETION
 12" X 12" SIGN SUPPORT BLOCKOUTS REQUIRED IN EVERY MEDIAN SURFACE

EXISTING TURN LANE TO BE COVERED DURING STAGE CONSTRUCTION

SYMBOLS

- WORK AREA
- DRUM
- DIRECTION OF TRAFFIC
- SIGN
- TYPE III BARRICADE WITH FLASHING LIGHTS
- CONCRETE MEDIAN REMOVAL

GENERAL NOTES

THE TRAFFIC CONTROL PLAN IS USED WHERE, AT ANY TIME, ANY VEHICLE, EQUIPMENT, WORKERS, OR THEIR ACTIVITIES WILL ENCRANCH ON ONE LANE OF A BRIDGE.

EXISTING OR TEMPORARY PAVEMENT MARKINGS SHALL BE ON BOTH SIDES OF OPEN LANE FROM STOP BAR TO STOP BAR.

TEMPORARY PAVEMENT MARKING AS SHOWN ON THIS DETAIL, SHALL NOT BE PAID FOR SEPARATELY BUT SHALL BE INCLUDED IN THE COST OF THE STANDARD.

TEMPORARY PAVEMENT MARKING
 ① 4" WHITE
 ② 4" DOUBLE YELLOW

STAGE I
 LOOKING WEST

USER NAME = NOLASCOCJ	DESIGNED - SC	REVISED -
PLOT SCALE = 250.0000' / in.	DRAWN - SC	REVISED -
PLOT DATE = 12/4/2020	CHECKED - JO	REVISED -
	DATE -	REVISED -

STATE OF ILLINOIS
DEPARTMENT OF TRANSPORTATION

TRAFFIC CONTROL
STAGE I & II

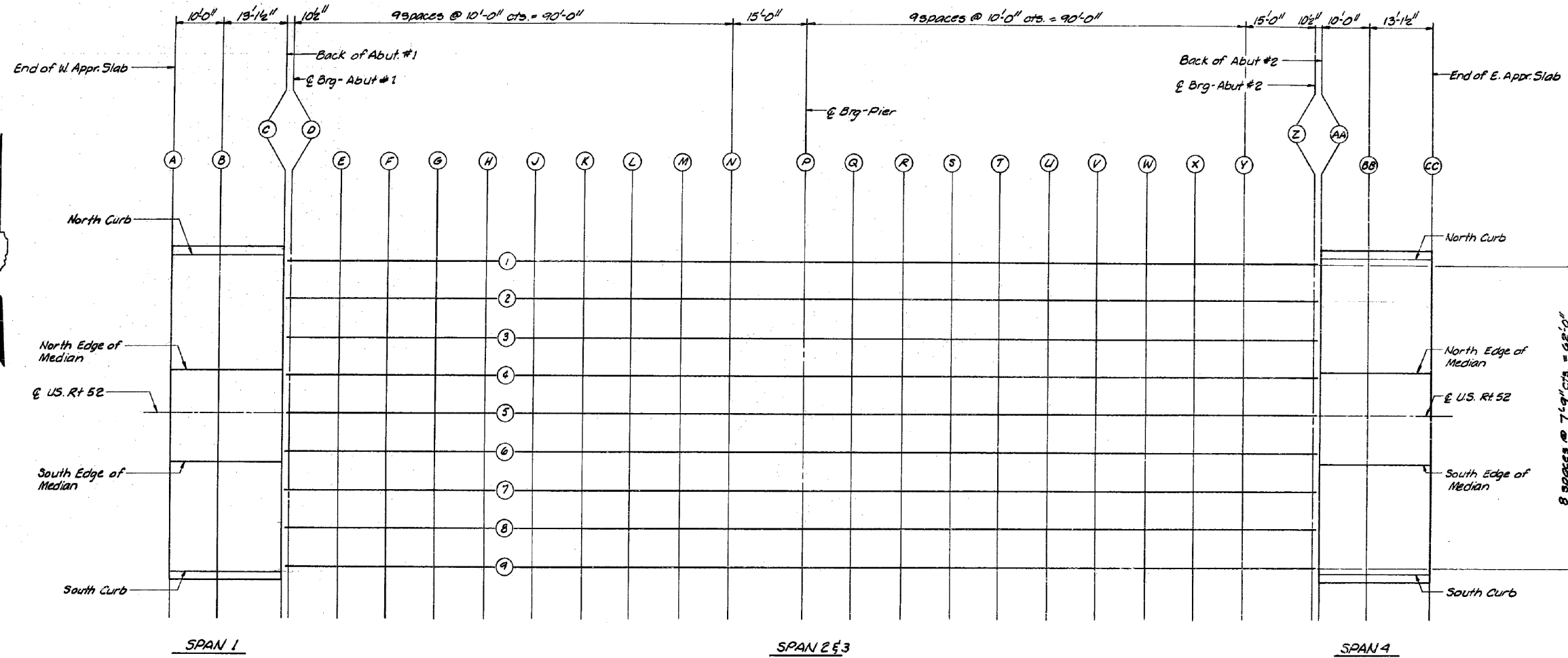
SCALE: SHEET OF SHEETS STA. TO STA.

F.A.I. RTE.	SECTION	COUNTY	TOTAL SHEETS	SHEET NO.
39	(50-6HB-1)I-3	LASALLE	34	26
CONTRACT NO. 66L00				
ILLINOIS FED. AID PROJECT				

MODEL: Default
 FILE: NolaSC_PlanStation.dwg
 PROJECT: 03666.00\CADD\03666.00-SubTraffic Control.dwg

Sheet No. 2
of 11 Sheets.

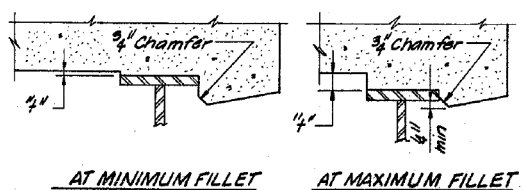
ROUTE NO.	SECTION	COUNTY	TOTAL SHEETS	SHEET NO.
FA 412	50-6 HB-1	LaSalle	81	34
FED. ROAD DIST. NO.	ILLINOIS	PROJECT		



PLAN

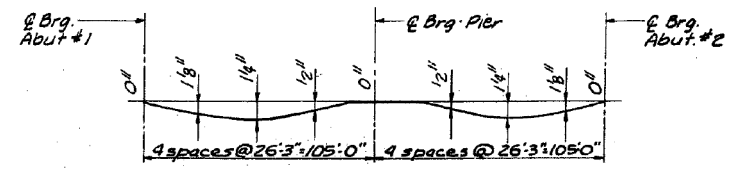
See Structural Framing Plan (sh.# 7) for transverse spacing of Girders.

FOR INFORMATION ONLY



FILLET HEIGHTS

To determine "t" After all structural steel has been erected, elevations of the top flanges of the beams shall be taken at the intervals shown above. These elevations subtracted from the "Elevations Adjusted for Dead Load Deflection" shown on sheet 3 minus slab thickness, equals the fillet heights "t" above top flange of beams.



DEAD LOAD DEFLECTION DIAGRAM

(Includes weight of concrete only)
Note: The above deflections are not to be used in the field if the Engineer is working from the grade elevations adjusted for dead load load deflections as shown

REVISIONS			DRAWN BY DATE	
NO.	REV.	DATE	NAME	DATE
1			JNA	2-75
2			ROB	5-75
3				
4				
5				
6				
7				
8				
9				
10				

TOP OF SLAB ELEVATIONS		PROJECT NO.
U.S. RT. 52 OVER FA-412		2601-3
FA-412 SEC. 50-6 HD-1 PROJECT		SHEET NO.
STA. 1404+80.50 (FA-412) LASALLE CO.		
HOMER L. CHASTAIN & ASSOCIATES		
CONSULTING ENGINEERS		
DECATUR, ILLINOIS		

MODEL: Default
FILE: h:\p1\planroom\fa_412\illinois\p1\p1\DOT\Documents\DOT - Offices\Dist\ct 3\Project\31366100\CADD\31366100-shc-detailed.dgn

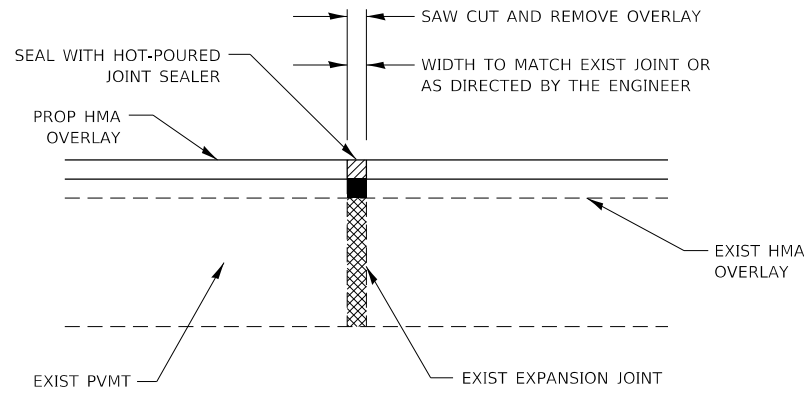
USER NAME = NOLASCOCJ	DESIGNED -	REVISED -
PLOT SCALE = 100.0000' / in.	DRAWN -	REVISED -
PLOT DATE = 10/16/2020	CHECKED -	REVISED -
	DATE -	REVISED -

**STATE OF ILLINOIS
DEPARTMENT OF TRANSPORTATION**

CLEANING & PAINTING DETAILS

SCALE: SHEET OF SHEETS STA. TO STA.

F.A.I. RTE.	SECTION	COUNTY	TOTAL SHEETS	SHEET NO.
39	(50-6HB-1)-3	LASALLE	34	29
CONTRACT NO. 66L00				
ILLINOIS FED. AID PROJECT				

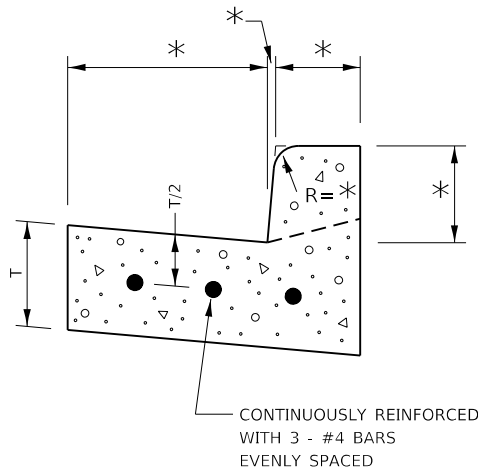


EXPANSION JOINT REHABILITATION DETAIL

GENERAL NOTES:

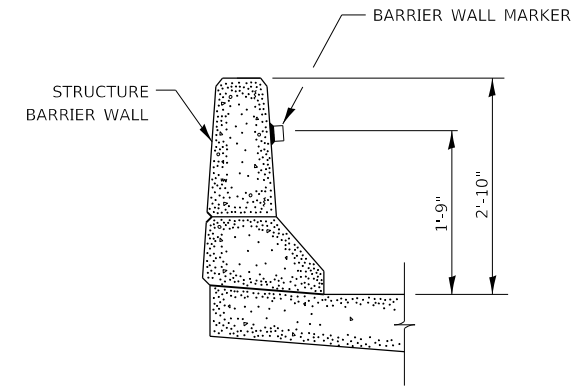
1. THE NEW HMA OVERLAY SHALL BE SAWED, REMOVED AND THE JOINT AREA CLEANED. PRIOR TO PLACING THE HOT-POURED JOINT SEALER, THE JOINT SHALL BE BLOWN OUT WITH COMPRESSED AIR.
2. THIS WORK WILL BE PAID FOR AT THE CONTRACT UNIT PRICE PER FOOT FOR EXPANSION JOINT REHABILITATION.

* VARIES - SEE STANDARD 606001

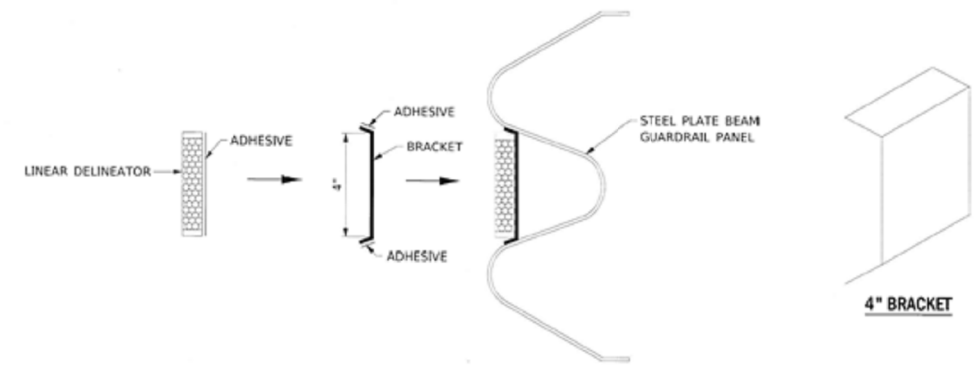


REINFORCEMENT SHALL NOT BE PAID FOR SEPARATELY BUT WILL BE INCLUDED IN THE CONTRACT UNIT PRICE FOR CC&G.

REINFORCEMENT DETAIL FOR COMBINATION CONCRETE CURB AND GUTTER

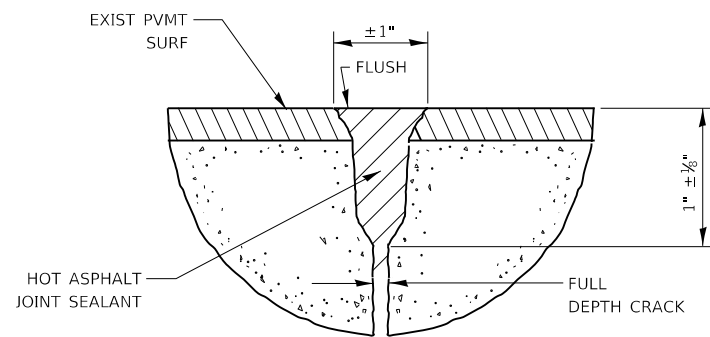


BARRIER WALL MARKER



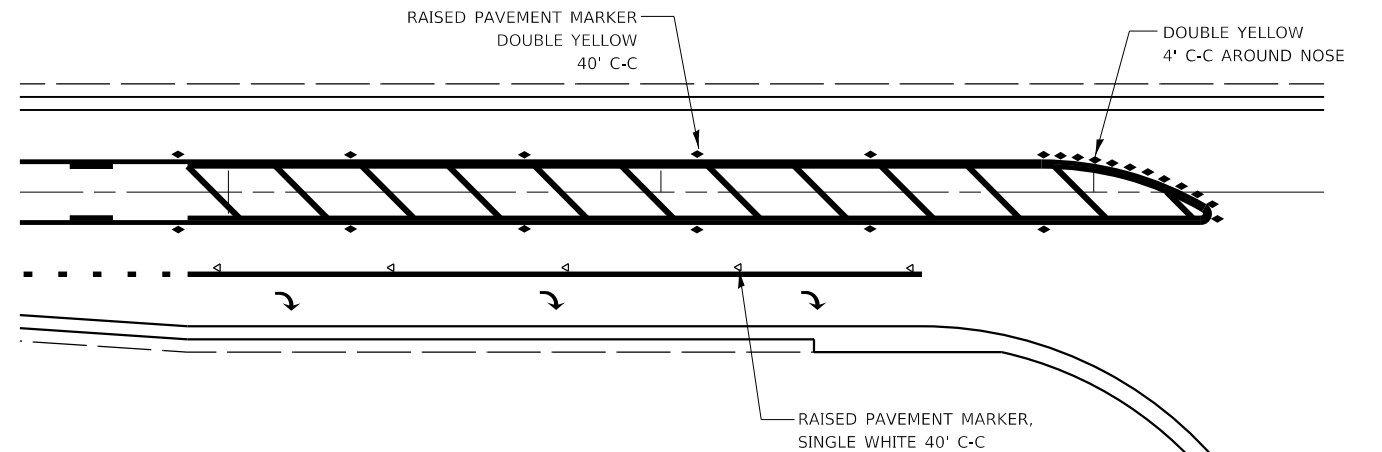
LINEATOR DELINEATOR APPLICATION TO STANDARD GALVANIZED GUARDRAIL

LINEATOR DELINEATOR SHALL BE APPLIED ACCORDING TO THE MANUFACTURER'S RECOMMENDATIONS



ROUTING & SEALING JOINTS

(CENTERLINE & TRANSVERSE PATCH BOUNDARIES)



RAISED REFLECTIVE PAVEMENT MARKERS @ RIGHT TURN LANE

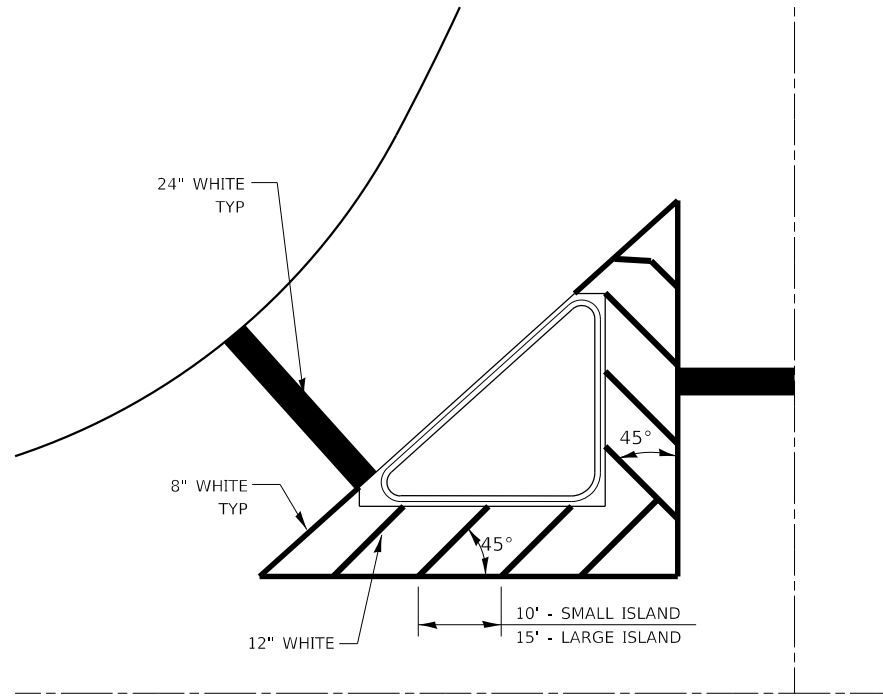
MODEL: Default
 FILE: \\nas01c.psu.edu\pub\baronm.d\at\illinois.gov\PIWDOT\Documents\DOT_Offices\District_3\Projects\ID366\00\CADD\DATA\ID366\00-shc-detailed.dgn

USER NAME = carmins	DESIGNED -	REVISED -
PLOT SCALE = 100.0000' / in.	DRAWN -	REVISED -
PLOT DATE = 10/19/2020	CHECKED -	REVISED -
	DATE -	REVISED -

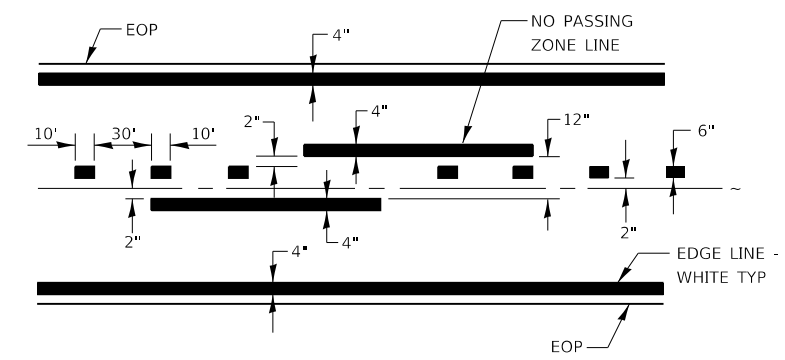
**STATE OF ILLINOIS
DEPARTMENT OF TRANSPORTATION**

DETAILS				
SCALE:	SHEET	OF	SHEETS	STA. TO STA.

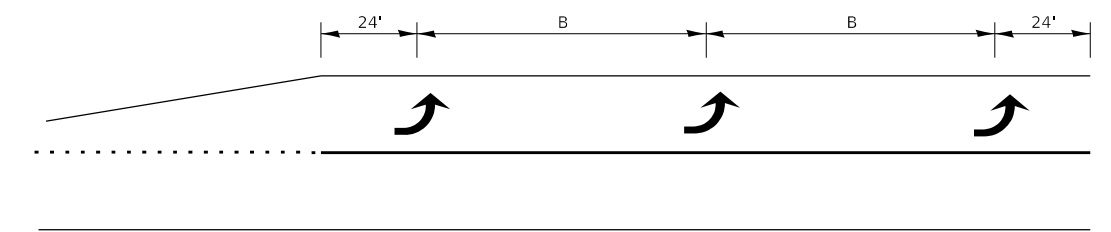
F.A.I. RTE.	SECTION	COUNTY	TOTAL SHEETS	SHEET NO.
39	(50-6HB-1)I-3	LASALLE	34	30
CONTRACT NO. 66L00				
ILLINOIS FED. AID PROJECT				



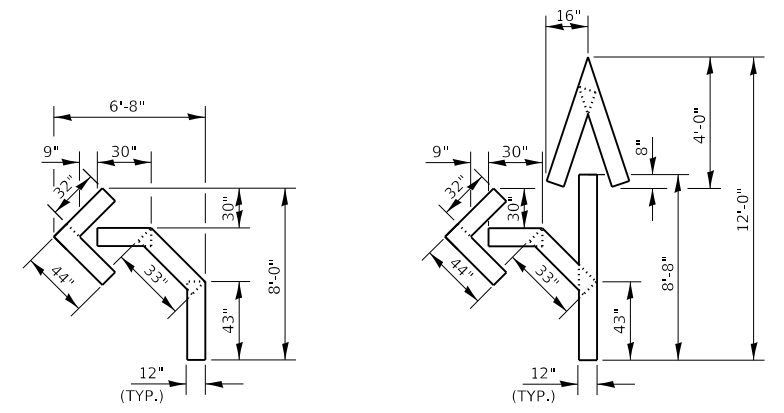
TYPICAL ISLAND



PAVEMENT MARKING

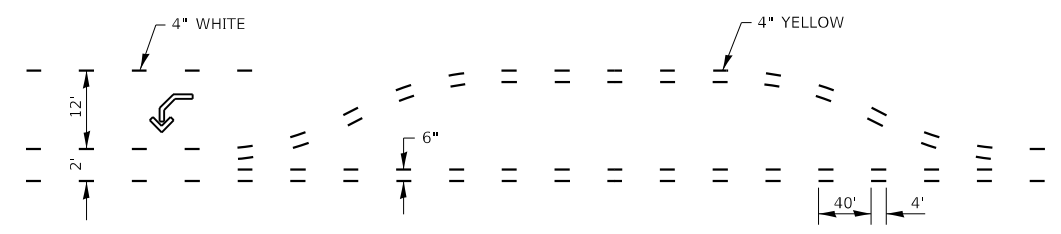


150' AND LONGER
TYPICAL PLACEMENT OF ARROWS
IN TURN LANES



QUANTITY
12" LINE = 16 LIN FT
OR 4" LINE = 48 LIN FT

QUANTITY
12" LINE = 29 LIN FT
OR 4" LINE = 87 LIN FT



SHORT-TERM PAVEMENT MARKING
FOR MEDIANS AND ARROWS

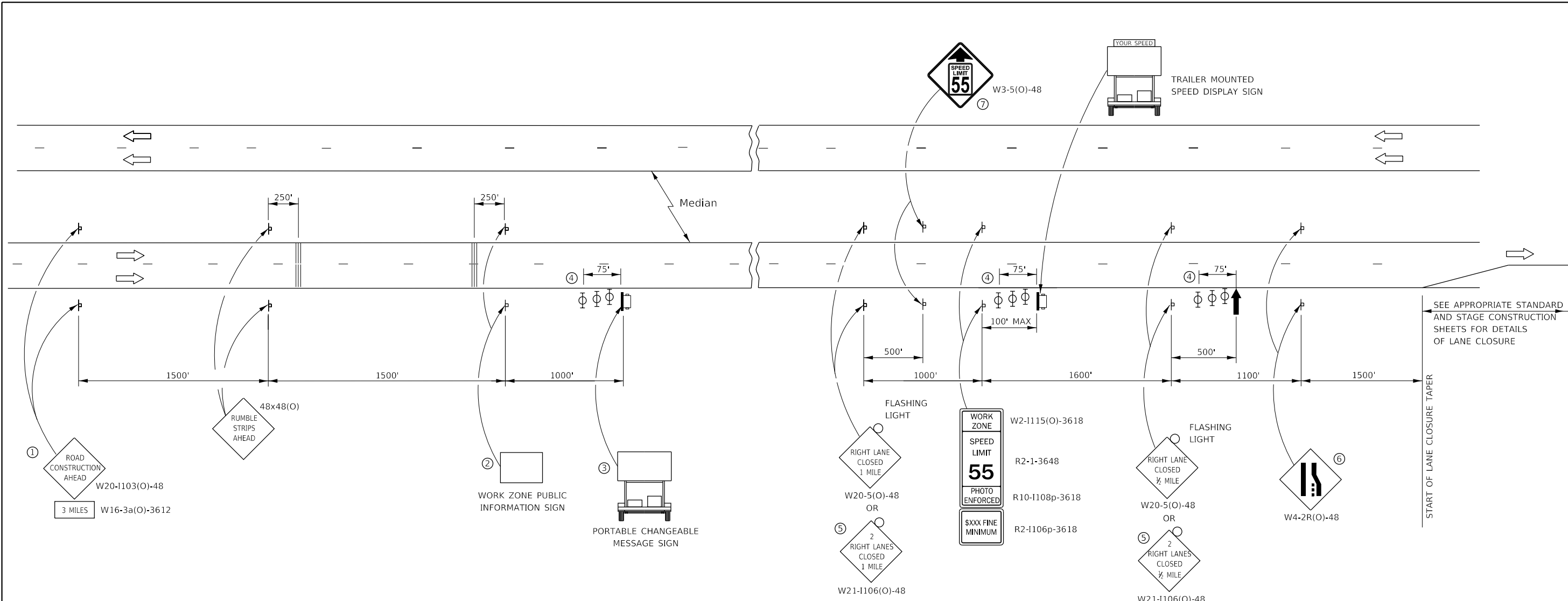
MODEL: Default
FILE: h:\mhc\p\pub\lanroom.d\at\illinois.gov\PWIDOT\Documents\DOT_Offices\Dir\ctc_3\projects\0366\00\CADD\0366_00-shc-detailed.dgn

USER NAME = NOLASCOCJ	DESIGNED -	REVISED -
	DRAWN -	REVISED -
PLOT SCALE = 100.0000' / in.	CHECKED -	REVISED -
PLOT DATE = 10/16/2020	DATE -	REVISED -

STATE OF ILLINOIS
DEPARTMENT OF TRANSPORTATION

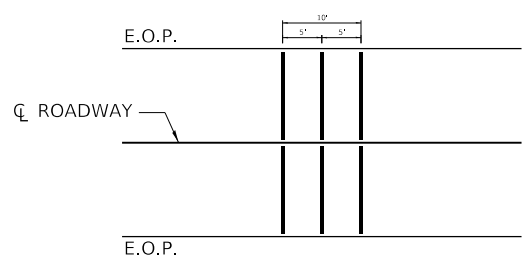
DETAILS			
SCALE:	SHEET	OF SHEETS	STA. TO STA.

F.A.I. RTE.	SECTION	COUNTY	TOTAL SHEETS	SHEET NO.
39	(50-6HB-1)I-3	LASALLE	34	31
CONTRACT NO. 66L00				
ILLINOIS FED. AID PROJECT				



SEE APPROPRIATE STANDARD AND STAGE CONSTRUCTION SHEETS FOR DETAILS OF LANE CLOSURE

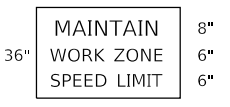
START OF LANE CLOSURE TAPER



TEMPORARY RUMBLE STRIP (SPECIAL)

- ① THE ROAD CONSTRUCTION AHEAD SIGN SHALL BE LOCATED 3 MILES IN ADVANCE OF THE PROJECT LIMITS.
- ② THE MESSAGE AND SIZE OF THE WORK ZONE PUBLIC INFORMATION SIGN SHALL BE AS SPECIFIED BY THE DEPARTMENT.
- ③ TO BE PLACED IN THE MEDIAN WHEN FEASIBLE. THE MESSAGE BOARD SHALL BE USED TO DISPLAY STATUS OF LANES WITHIN THE PROJECT. THE PRIMARY MESSAGES SHALL BE:
"RIGHT LANE CLOSED" / " x MILES AHEAD"
"LEFT LANE CLOSED" / " x MILES AHEAD"
"ALL LANES OPEN"
- ④ THREE, TYPE II BARRICADES, DRUMS, OR VERTICAL BARRICADES AT 25' CENTERS.
- ⑤ THIS SIGN SHALL BE USED WHEN 2 LANES ARE CLOSED.
- ⑥ WHEN THE LEFT LANE IS CLOSED, SWITCH THESE TWO SIGNS AND THE DIRECTION OF THE MERGE ARROW.
- ⑦ THIS SIGN SHALL ONLY BE USED IF THE EXISTING SPEED LIMIT IS GREATER THAN 65 MPH.

⑧ 48"x36" FLUORESCENT ORANGE SIGN WITH BLACK LETTERS. 48"



- ↑ ARROW BOARD
- ☐ PORTABLE CHANGEABLE MESSAGE SIGN
- ⊥ SIGN
- ⊕ TYPE II BARRICADE, DRUM, OR VERTICAL BARRICADE WITH MONODIRECTIONAL FLASHING LIGHT
- ↘ LANE DROP ARROW - SEE STANDARD 780001
- ▤ TEMPORARY RUMBLE STRIPS (SPECIAL) (SEE DETAIL & SPECIAL PROVISION)

GENERAL NOTE:

THIS STANDARD IS USED WHERE AT ANY TIME A LANE IS CLOSED ON A FREEWAY/EXPRESSWAY.

WHEN THE LEFT LANE IS CLOSED, LEFT LANE CLOSED SIGNS SHALL BE SUBSTITUTED FOR THE RIGHT LANE CLOSED SIGNS.

THE FIRST TWO SIGNS AND THE MESSAGE BOARD ARE STATIONARY. THE OTHER SIGNS AND ARROWBOARDS SHALL BE MOVED AS NECESSARY TO MAINTAIN THE REQUIRED DISTANCE FROM THE START OF THE LANE CLOSURE TAPER(S).

SEE SPECIAL PROVISIONS.

ALL DIMENSIONS ARE IN INCHES UNLESS OTHERWISE SHOWN.

MODEL: Default
FILE: \\nolascoc\pub\pubroom\dtd\illinois.gov\PIWDOT\Documents\DOT_Offices\District_3\Projects\0366\00\Cadd\0366_00-shc\traffic_control.dgn

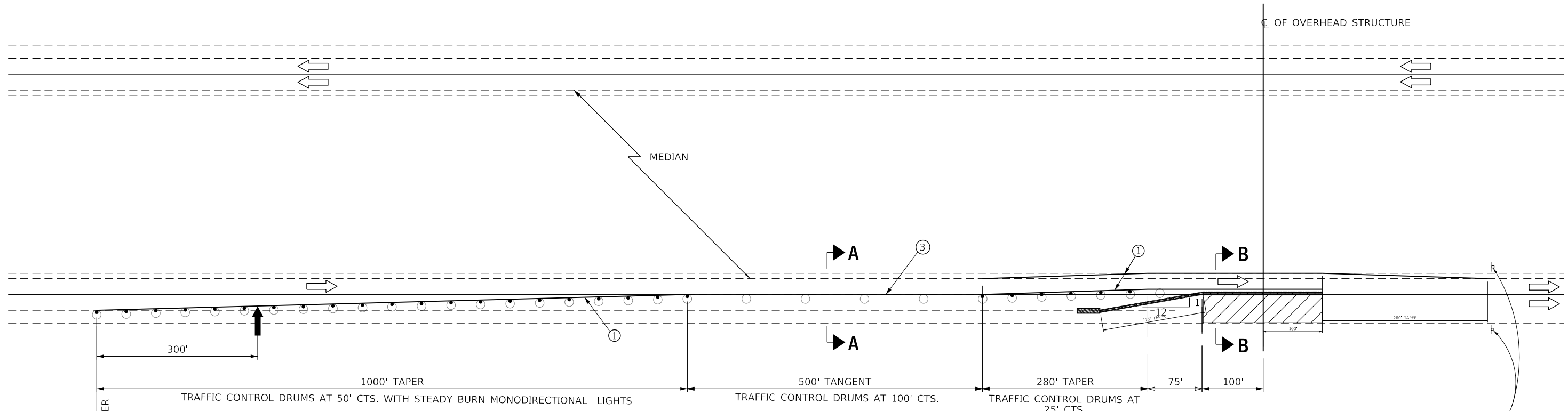
USER NAME = NOLASCOCJ	DESIGNED - RW	REVISED -
	DRAWN - EM	REVISED -
PLOT SCALE = 250.0000' / in.	CHECKED - SC	REVISED -
PLOT DATE = 12/4/2020	DATE -	REVISED -

**STATE OF ILLINOIS
DEPARTMENT OF TRANSPORTATION**

**TRAFFIC CONTROL AND PROTECTION,
STANDARD 701400**

SCALE: SHEET OF SHEETS STA. TO STA.

F.A.I. RTE.	SECTION	COUNTY	TOTAL SHEETS	SHEET NO.
39	(50-6HB-1)I-3	LASALLE	34	33
CONTRACT NO. 66L00				
ILLINOIS		FED. AID PROJECT		



SEE STANDARD 701400 FOR APPROACH OF LANE CLOSURE TAPER

300'

1000' TAPER

TRAFFIC CONTROL DRUMS AT 50' CTS. WITH STEADY BURN MONODIRECTIONAL LIGHTS

500' TANGENT

TRAFFIC CONTROL DRUMS AT 100' CTS.

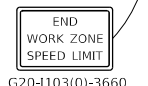
280' TAPER

TRAFFIC CONTROL DRUMS AT 25' CTS.

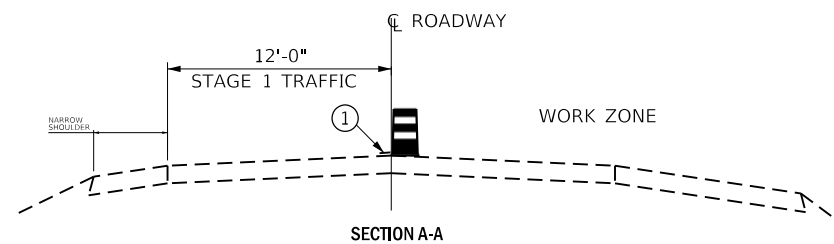
75'

100'

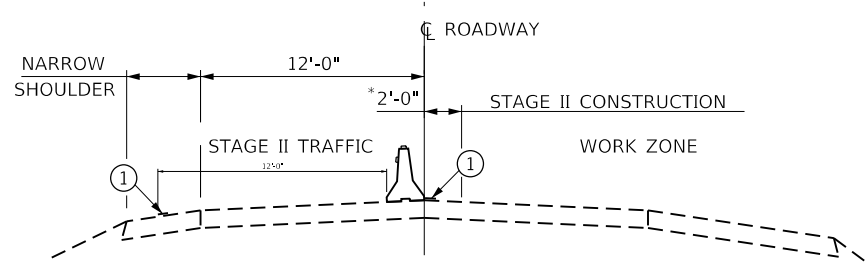
280' TAPER



G20-1103(0)-3660



SECTION A-A



SECTION B-B

STAGE II

- ① TEMPORARY PAVEMENT MARKING TAPE SHALL BE PLACED THROUGHOUT THE TAPER AND ALONG-SIDE THE WORK AREA. THE RIGHT EDGE LINE SHALL BE WHITE AND THE LEFT EDGE LINE SHALL BE YELLOW.
- ② BARRIER WALL/GUARDRAIL MARKERS AT 25' (7.6 M). MARKERS ON RIGHT SHALL BE CRYSTAL AND MARKERS ON LEFT SHALL BE AMBER.
- ③ EXISTING PAVEMENT MARKING

SYMBOLS

- ↑ ARROW BOARD
- ▨ WORK AREA
- ⊥ SIGN
- TRAFFIC CONTROL DRUM WITH STEADY BURN MONODIRECTIONAL LIGHT
- TRAFFIC CONTROL DRUM
- TEMPORARY CONCRETE BARRIER
- ◁ MONODIRECTIONAL BARRIER WALL/GUARDRAIL MARKER
- ▩ IMPACT ATTENUATOR

GENERAL NOTES

THIS STANDARD IS USED WHERE AT ANY TIME ANY VEHICLE, EQUIPMENT, WORKERS OR THEIR ACTIVITIES WILL ENCROACH ON THE PAVEMENT OR ON THE SHOULDER WITHIN 24 (600) OF THE EDGE OF PAVEMENT FOR DAYLIGHT OPERATION EXCEEDING ONE DAY AND WHERE TEMPORARY CONCRETE BARRIER IS UTILIZED.

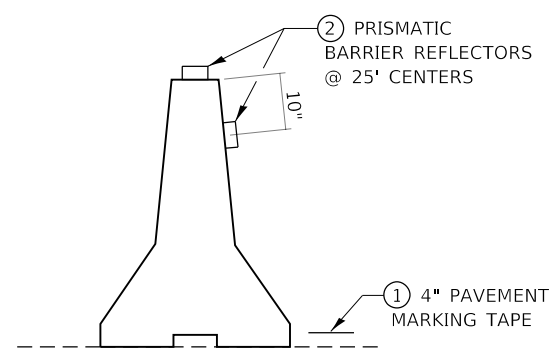
THIS STANDARD MUST ALWAYS BE USED IN COMBINATION WITH STANDARD 701400.

WHEN WORK IS BEING PERFORMED IN THE LEFT LANE, THE SET UP WOULD BE A MIRROR IMAGE TO WHAT IS SHOWN.

TEMPORARY CONCRETE BARRIER SHALL BE ACCORDING TO STANDARD 704001.

CALCULATE L AS FOLLOWS:
 NORMAL POSTED SPEED FORMULAS
 45 MPH OR MORE ENGLISH L=(W)(S)

W = WIDTH OF OFFSET IN FEET (METERS).
 S = NORMAL POSTED SPEED IN MPH (KM/H).



TEMPORARY CONCRETE BARRIER

*NO EQUIPMENT OR MATERIALS SHALL ENCROACH WITHIN A DISTANCE OF 2'-0" Laterally AS MEASURED FROM THE BASE OF THE TEMPORARY CONCRETE BARRIER.

MODEL: Default
 FILE: h:\mhc\proj\pub\room\dat\illinois\gov\pww\dot\Documents\DOT_Offices\Draft\2\Projects\0366\00\Cadd\0366\00-shc\traffic_control.dgn

USER NAME = NOLASCOCJ	DESIGNED - RW	REVISED -
	DRAWN - EM	REVISED -
PLOT SCALE = 250.0000' / in.	CHECKED - SC	REVISED -
PLOT DATE = 12/4/2020	DATE -	REVISED -

STATE OF ILLINOIS
 DEPARTMENT OF TRANSPORTATION

TRAFFIC CONTROL AND PROTECTION,
 STANDARD 701402 (SPECIAL) - STAGE II

SCALE: SHEET OF SHEETS STA. TO STA.

F.A.I. RTE.	SECTION	COUNTY	TOTAL SHEETS	SHEET NO.
39	(50-6HB-1)I-3	LASALLE	34	33 B
CONTRACT NO. 66L00				
ILLINOIS FED. AID PROJECT				

