

1. COVER SHEET
2. GENERAL NOTES
3. SUMMARY OF QUANTITIES
4. SITE PLAN - GENERAL
5. SITE PLAN - GRADES
6. SITE PLAN - REMOVAL
7. SITE PLAN - RESURFACING

**STANDARDS**

- |           |  |
|-----------|--|
| 000001-08 | STANDARD SYMBOLS, ABBREVIATIONS AND PATTERNS                               |
| 001006    | DECIMAL OF AN INCH AND OF A FOOT   |
| 701001-02 | OFF-ROAD OPERATIONS 2L, 2W, MORE THAN 15' (4.5 m) AWAY                     |
| 701006-05 | OFF-ROAD OPERATIONS 2L, 2W, 15' (4.5 m) TO 24" (600 mm) FROM PAVEMENT EDGE |
| 701201-05 | LANE CLOSURE, 2L, 2W, DAY ONLY, FOR SPEEDS ≥ 45 MPH                        |
| 701901-08 | TRAFFIC CONTROL DEVICES  |

STATE OF ILLINOIS  
DEPARTMENT OF TRANSPORTATION

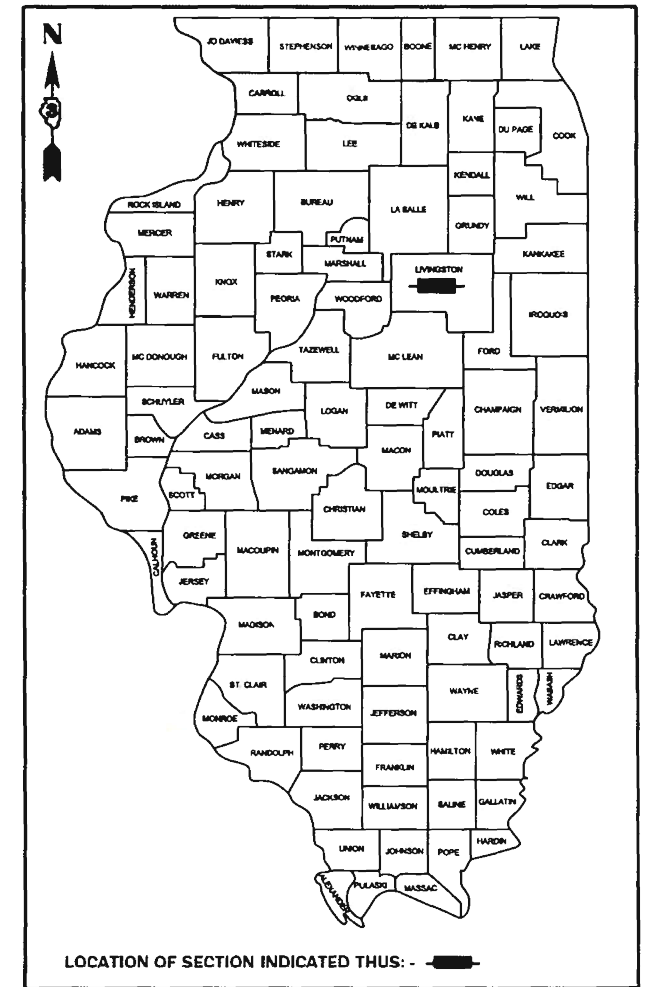
**PROPOSED  
HIGHWAY PLANS**

F.A.P. ROUTE 673 (IL 116)  
SECTION (112X)RS, MG  
CAPITOL DEVELOPEMENT BOARD  
MILLING AND RESURFACING  
LIVINGSTON COUNTY

C-93-035-21

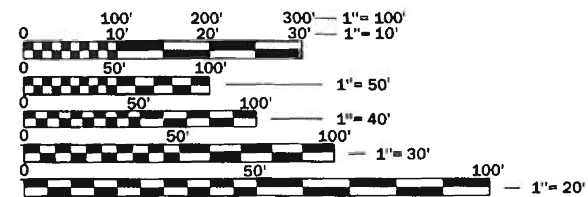
F.A.P. RTE.	SECTION	COUNTY	TOTAL SHEETS	SHEET NO.
673	(112X)RS MG	LIVINGSTON	7	1
		ILLINOIS	CONTRACT NO. 66L40	

D-93-003-21



**PROJECT LOCATION**

ILLINOIS DEPARTMENT OF TRANSPORTATION  
PONTIAC MAINTENANCE FACILITY  
ADDRESS: 12970 E. 1700N. RD.  
PONTIAC, IL 61764



FULL SIZE PLANS HAVE BEEN PREPARED USING STANDARD ENGINEERING SCALES. REDUCED SIZED PLANS WILL NOT CONFORM TO STANDARD SCALES. IN MAKING MEASUREMENTS ON REDUCED PLANS, THE ABOVE SCALES MAY BE USED.

J.U.L.I.E.  
JOINT UTILITY LOCATION INFORMATION FOR EXCAVATION  
1-800-992-0123  
OR 811

PROJECT ENGINEER JOE KANNEL P.E.  
UNIT CHIEF RON WOODSHANK  
DISTRICT 3 NO. (815) 434-6131  
CONTRACT NO. 66L40



POINT LOCATION

STATE OF ILLINOIS  
DEPARTMENT OF TRANSPORTATION

SUBMITTED October 15, 2020

*[Signature]*  
REGIONAL ENGINEER

December 4, 2020

*[Signature]*  
ENGINEER OF DESIGN AND ENVIRONMENT

December 4, 2020

*[Signature]*  
DIRECTOR OF HIGHWAYS PROJECT IMPLEMENTATION 13

PRINTED BY THE AUTHORITY  
OF THE STATE OF ILLINOIS

## GENERAL NOTES

THE THICKNESS OF HMA SHOWN ON THE PLANS IS THE NOMINAL THICKNESS. DEVIATIONS FROM NOMINAL THICKNESS WILL BE PERMITTED WHEN SUCH DEVIATIONS OCCUR DUE TO IRREGULARITIES IN THE EXISTING SURFACE OR BASE ON WHICH THE HMA IS PLACED.

THE ENGINEER WILL BE THE SOLE JUDGE CONCERNING CURING TIME FOR THE VARIOUS HMA LIFTS.

ALL EXCAVATED MATERIALS, WHICH INCLUDE DIGGING OR GRADING OF ANY SOIL OR FILL MATERIAL, WITH EXCEPTION OF AGGREGATE FILLS, MUST BE INCORPORATED WITHIN THE IDOT RIGHT OF WAY DUE TO ENVIRONMENTAL DOCUMENTATION REQUIREMENTS.

ON EXISTING PAVEMENT WHICH MAY BE SUPERELEVATED, THE NEW HMA OVERLAY SHALL BE BUILT WITH THE SAME SUPERELEVATION UNLESS NEW SUPERELEVATION RATES ARE GIVEN ON THE PLANS.

ANY REFERENCE TO A STANDARD IN THESE PLANS SHALL BE INTERPRETED TO MEAN THE EDITION AS INDICATED BUY THE SUBNUMBER SHOWN IN THE LIST OF STANDARDS OR THE COPY INCLUDED IN THE PLANS.

THE FOLLOWING RATES OF APPLICATION HAVE BEEN USED IN CALCULATING PLAN QUANTITIES.

HMA RESURFACING 112 LBS / SQ YD / IN

ALL DAMAGE TO DEPARTMENT OWNED ABOVE/UNDERGROUND FACILITIES CAUSED BY THE CONTRACTOR SHALL BE REPAIRED OR REPLACED TO THE SATISFACTION OF THE ENGINEER AT THE CONTRACTOR'S EXPENSE. THIS SHALL INCLUDE ALL TEMPORARY REPAIRS REQUIRED TO KEEP THE FACILITY OPERATIONAL WHILE MATERIALS ARE BEING OBTAINED TO MAKE PERMANENT REPAIRS.

THE CONTRACTOR SHALL CONTACT "JULIE" AT LEAST 48 HOURS PRIOR TO ANY EXCAVATION TO DETERMINE WHICH UTILITIES ARE IN THE AREA.

## COMMITMENTS

**HMA MIXTURE REQUIREMENT TABLE**

LOCATION(S):	ENTIRE PROJECT	ENTIRE PROJECT
MIXTURE USE(S):	HMA BINDER	HMA SURFACE
BINDER GRADE (PG):	SBS PG70-28	SBS PG70-28
DESIGN AIR VOIDS:	4.0% @ N70	4.0% @ N70
MIXTURE COMPOSITION: (MIXTURE GRADATION)	IL 19.0	IL 9.5
FRICTION AGGREGATE:	N/A	MIXTURE C
MIXTURE WEIGHT:	112.0 LB/SY/IN	112.0 LB/SY/IN
QUALITY MANAGEMENT PROGRAM	QC/QA	QC/QA
SUBLOT SIZE:	N/A	N/A
DENSITY TEST METHOD:	GROWTH CURVE	GROWTH CURVE

STATE OF ILLINOIS  
DEPARTMENT OF TRANSPORTATION  
DISTRICT THREE  
AS BUILT INFORMATION

\_\_\_\_\_  
SUPERVISING CONSTRUCTION FIELD ENGINEER

\_\_\_\_\_  
RESIDENT ENGINEER / TECHNICIAN

START & END DATES  
OF CONSTRUCTION:

INSPECTORS:

STATE OF ILLINOIS  
DEPARTMENT OF TRANSPORTATION  
DISTRICT THREE

PREPARED BY: \_\_\_\_\_  
DISTRICT STUDIES & PLANS ENGINEER

DATE: \_\_\_\_\_

EXAMINED BY: \_\_\_\_\_  
DISTRICT CONSTRUCTION ENGINEER

\_\_\_\_\_  
DISTRICT MATERIALS ENGINEER

\_\_\_\_\_  
DISTRICT OPERATIONS ENGINEER

USER NAME = MARINIEJ	DESIGNED - RW	REVISED -
	DRAWN - RW	REVISED -
PLOT SCALE = 3.7581' / mm	CHECKED - EM	REVISED -
PLOT DATE = 10/15/2020	DATE - 7/10/2020	REVISED -

**STATE OF ILLINOIS  
DEPARTMENT OF TRANSPORTATION**

### GENERAL NOTES

SCALE: SHEET 1 OF 1 SHEETS STA. TO STA.

F.A.P. RTE.	SECTION	COUNTY	TOTAL SHEETS	SHEET NO.
673	(112X)RS.MG	LIVINGSTON	7	2
ILLINOIS FED. AID PROJECT			CONTRACT NO. 66L40	

CODE NO.	ITEM	UNIT	TOTAL QUANTITY	CONSTRUCTION CODE	
				CAPITOL DEVELOPMENT BOARD 100% STATE	
				NONE	
				0005	
				RURAL	
35800100	PREPARATION OF BASE	SQ YD	2444		2444
40600290	BITUMINOUS MATERIALS (TACK COAT)	POUND	9285		9285
40600906	POLYMERIZED HOT-MIX ASPHALT BINDER COURSE (HAND METHOD), N70	TON	50		50
40600990	TEMPORARY RAMP	SQ YD	383		383
40603235	POLYMERIZED HOT-MIX ASPHALT BINDER COURSE, IL-19.0, N70	TON	1926		1926
40604152	POLYMERIZED HOT-MIX ASPHALT SURFACE COURSE, IL-9.5, MIX "C", N70	TON	1156		1156
44000300	CURB REMOVAL	FOOT	100		100
67100100	MOBILIZATION	L SUM	1		1
70100450	TRAFFIC CONTROL AND PROTECTION, STANDARD 701201	L SUM	1		1
X0320050	CONSTRUCTION LAYOUT (SPECIAL)	L SUM	1		1
X4400196	HOT-MIX ASPHALT SURFACE REMOVAL, SPECIAL	SQ YD	11312		11312

MODEL: Default  
 FILE: \\nas101.psu.edu\pub\baronm\dat\illinois.gov\PWIDOT\Documents\DOT\_Offices\District\_3\Projects\10366L40\CADD\data\10366L40-cover.dgn

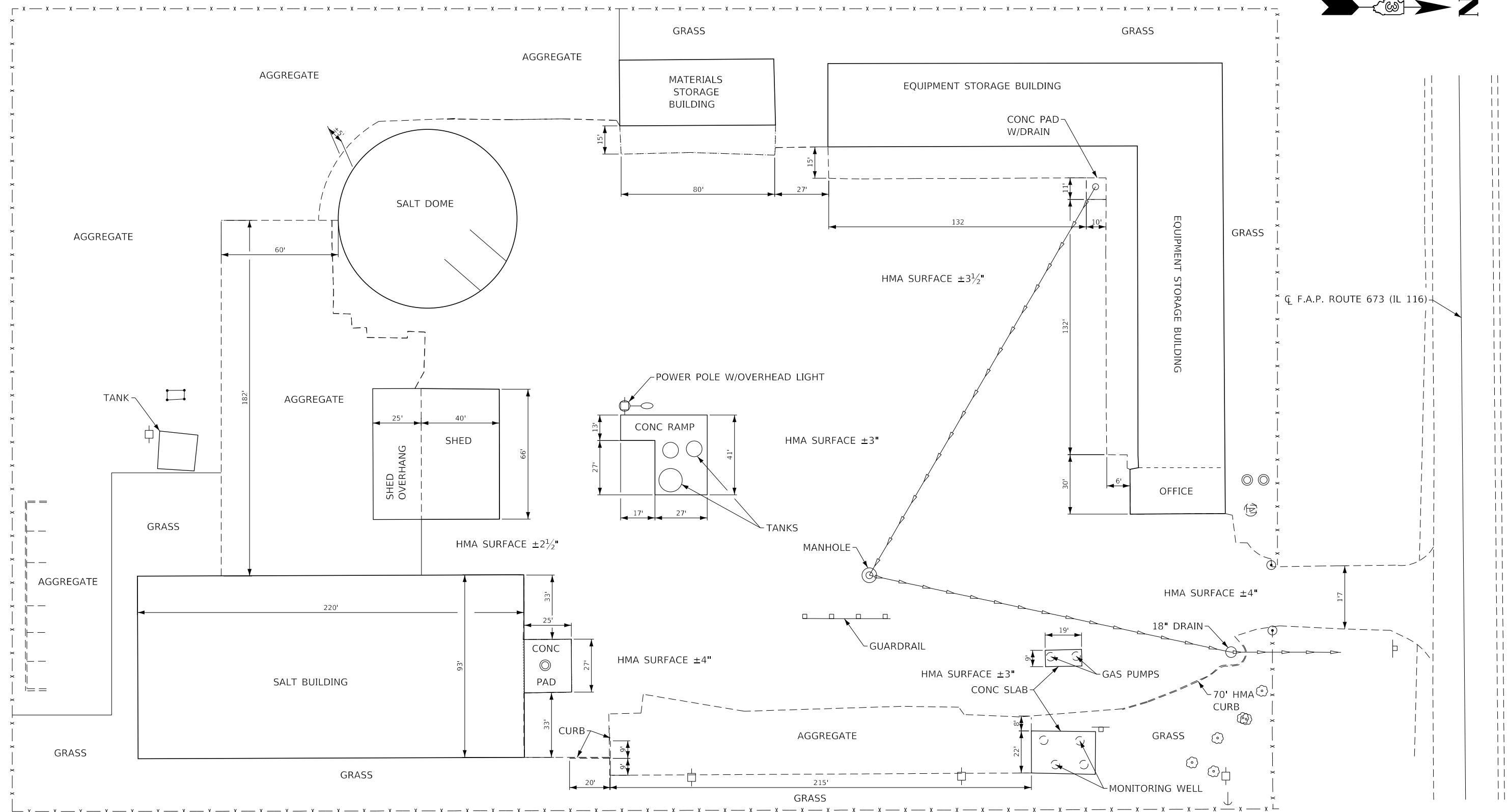
USER NAME = MARINIEJ	DESIGNED - RW	REVISED -
	DRAWN - RW	REVISED -
PLOT SCALE = 3.9370' / mm	CHECKED - EM	REVISED -
PLOT DATE = 10/15/2020	DATE - 7/10/2020	REVISED -

**STATE OF ILLINOIS  
DEPARTMENT OF TRANSPORTATION**

**SUMMARY OF QUANTITIES**

SCALE: SHEET 1 OF 1 SHEETS STA. TO STA.

F.A.P. RTE.	SECTION	COUNTY	TOTAL SHEETS	SHEET NO.
673	(112X)RS.MG	LIVINGSTON	7	3
CONTRACT NO. 66L40				
ILLINOIS FED. AID PROJECT				



**GENERAL - SITE PLAN**  
**PONTIAC MAINTENANCE FACILITY**

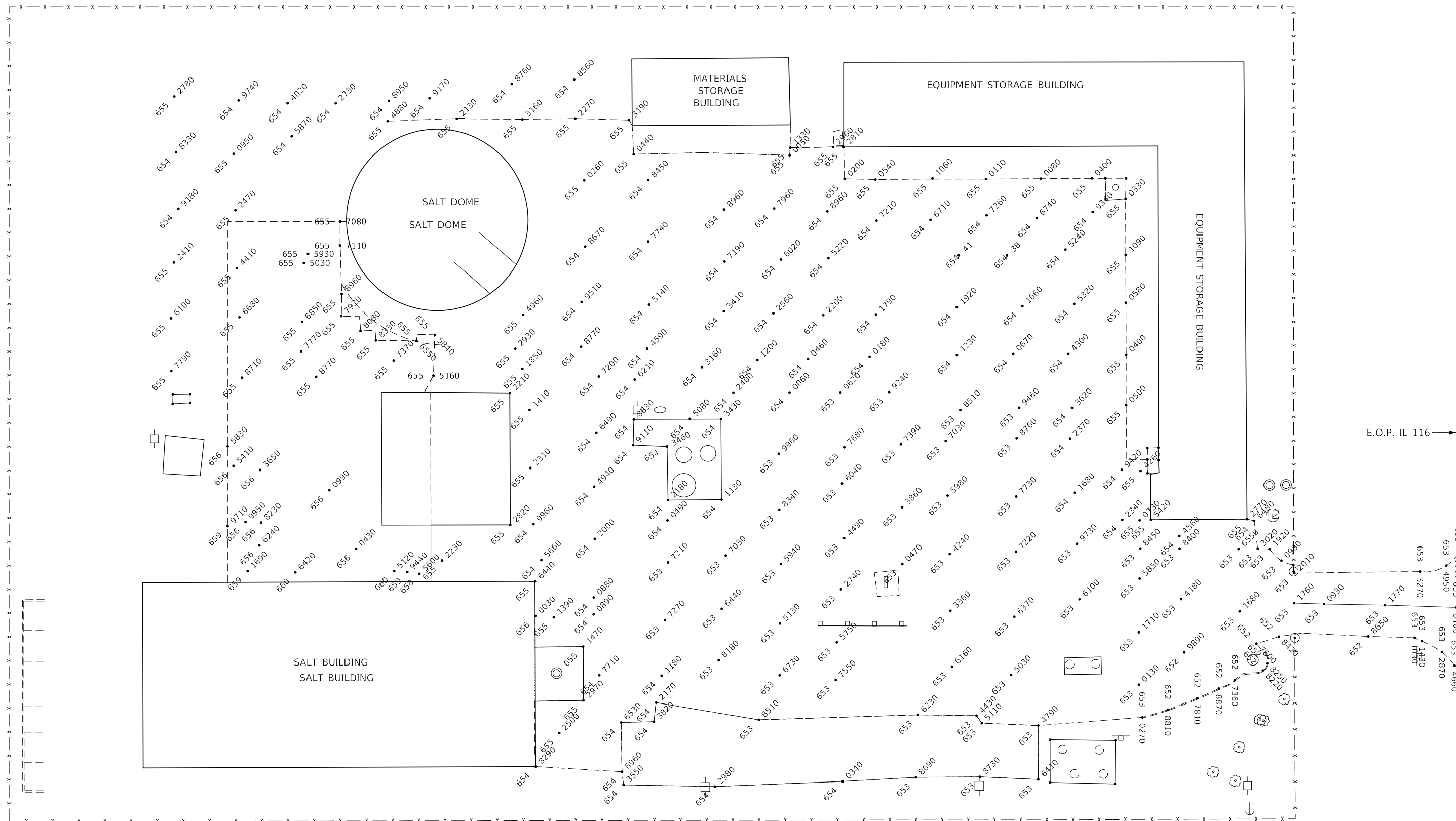
MODEL: Default  
 FILE: \\blm1c:\pub\baronm.dwg  
 PROJECT: \\blm1c:\pub\baronm.dwg  
 OFFICE: \\blm1c:\pub\baronm.dwg  
 DATE: 10/15/2020

USER NAME = MARINIEJ	DESIGNED - RW	REVISED -
	DRAWN - RW	REVISED -
PLOT SCALE = 3.9370' / mm	CHECKED - EM	REVISED -
PLOT DATE = 10/15/2020	DATE - 7/10/2020	REVISED -

**STATE OF ILLINOIS**  
**DEPARTMENT OF TRANSPORTATION**

<b>SITE PLAN - GENERAL</b>	
<b>PONTIAC MAINTENANCE FACILITY</b>	
SCALE:	SHEET 1 OF 1 SHEETS STA. TO STA.

F.A.P. RTE. 673	SECTION (112X)RS.MG	COUNTY LIVINGSTON	TOTAL SHEETS 7	SHEET NO. 4
CONTRACT NO. 66L40				
ILLINOIS FED. AID PROJECT				



**SITE PLAN - GRADING**  
**PONTIAC MAINTENANCE FACILITY**

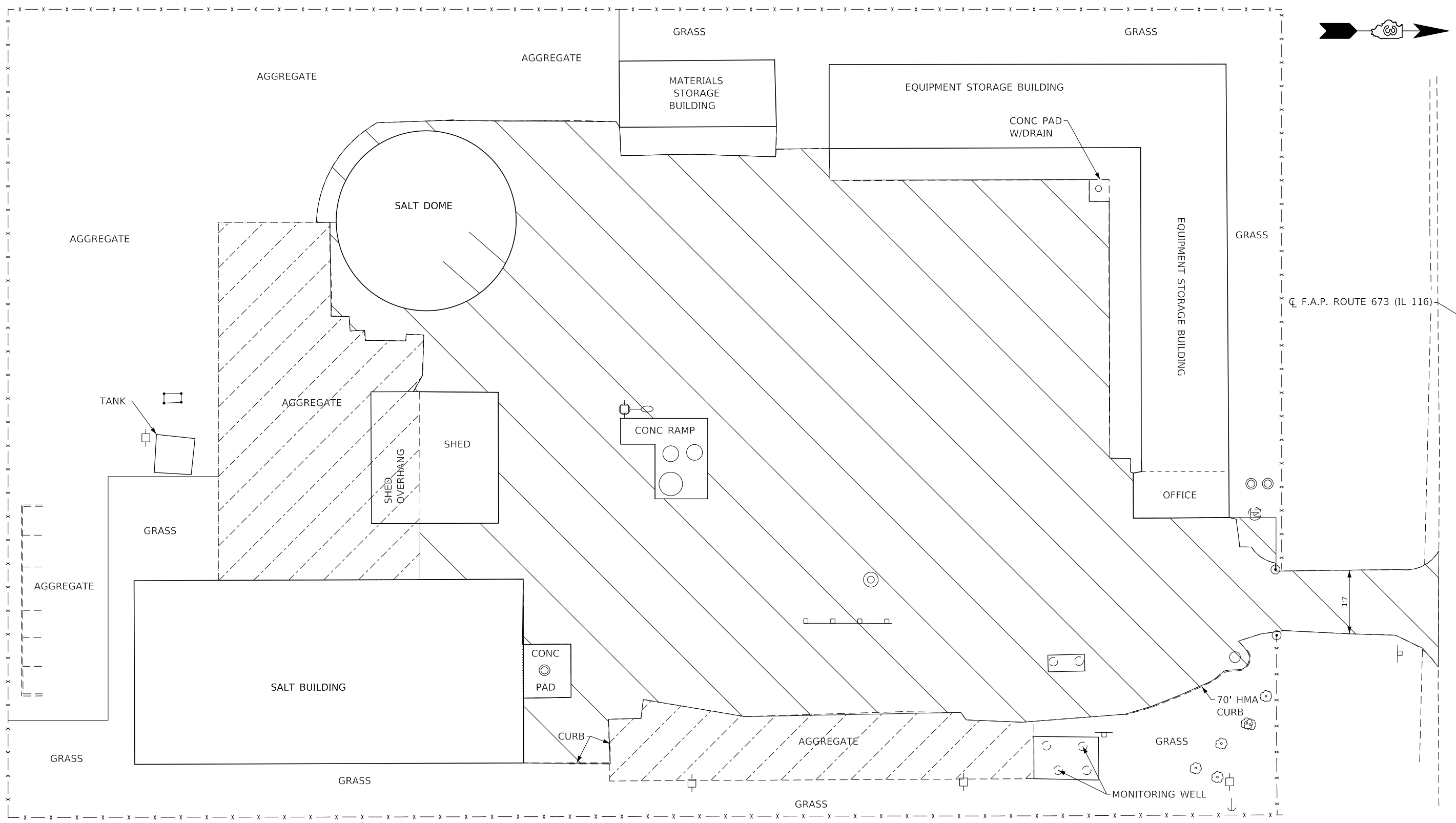
MODEL: Default  
 FILE: h:\mfgc\_p\pub\barroom.dwg  
 PROJECT: \D:\Projects\666L40\CADD\barroom.dwg  
 OFFICE: \D:\Projects\666L40\CADD\barroom.dwg

USER NAME = MARINIEJ	DESIGNED - RW	REVISED -
	DRAWN - RW	REVISED -
PLOT SCALE = 3.9370' / mm	CHECKED - EM	REVISED -
PLOT DATE = 10/15/2020	DATE - 7/10/2020	REVISED -

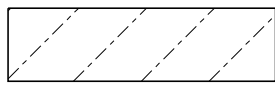
**STATE OF ILLINOIS**  
**DEPARTMENT OF TRANSPORTATION**

<b>SITE PLAN - GRADES</b>		
<b>PONTIAC MAINTENANCE FACILITY</b>		
SCALE:	SHEET 1 OF 1 SHEETS	STA. TO STA.

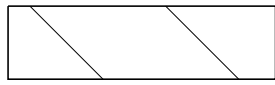
F.A.P. RTE. 673	SECTION (112X)RS.MG	COUNTY LIVINGSTON	TOTAL SHEETS 7	SHEET NO. 5
CONTRACT NO. 66L40				
ILLINOIS FED. AID PROJECT				



**LEGEND**



PREPARATION OF BASE



HOT-MIX ASPHALT SURFACE REMOVAL, SPECIAL

**SITE PLAN - REMOVAL  
PONTIAC MAINTENANCE FACILITY**

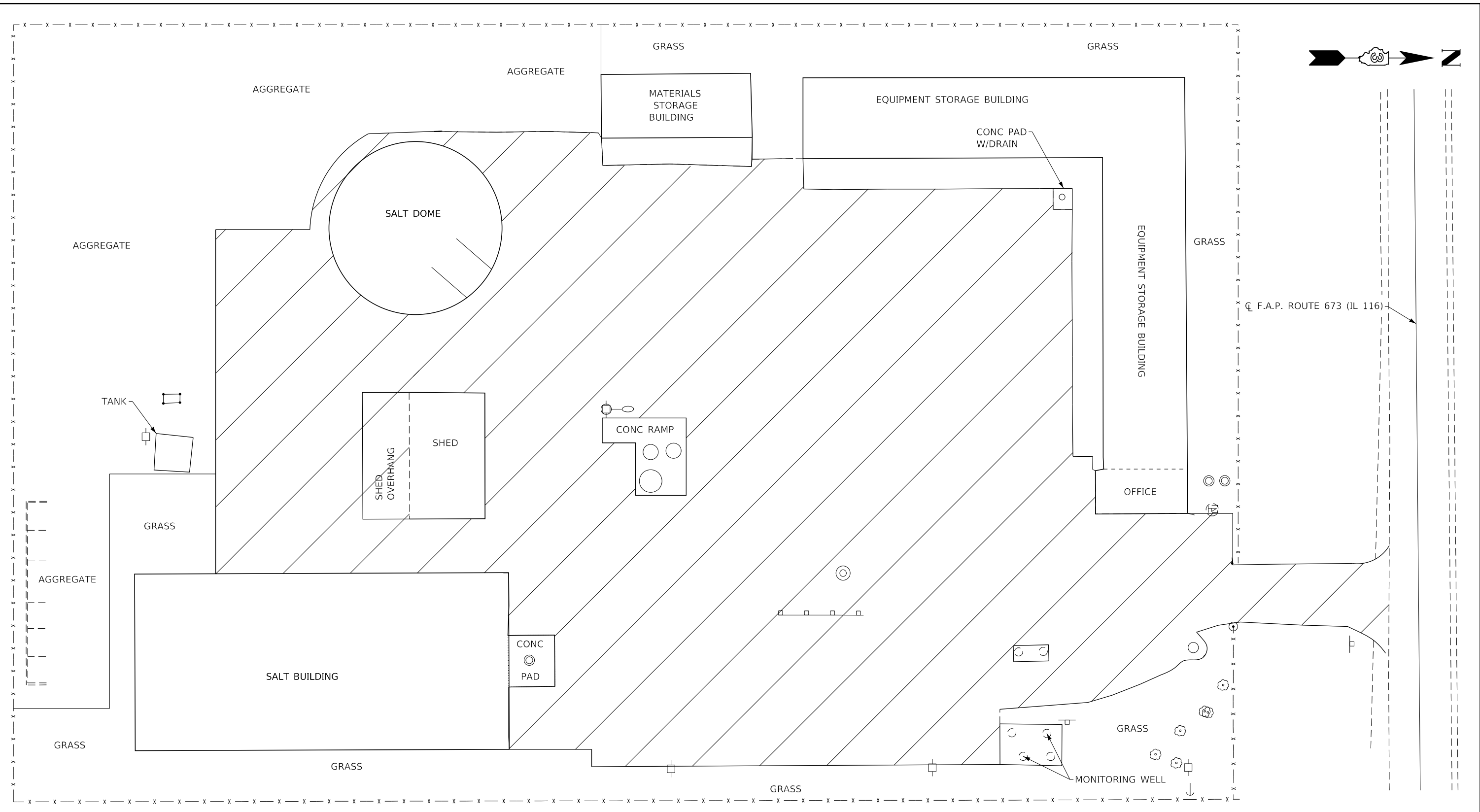
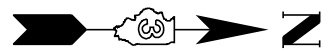
MODEL: Default  
 FILE: h:\mfgc\p10\p10barroom.dwg  
 PROJECT: 3\Projects\10366140\CADD\10366140-cover.dgn  
 OFFICE: 10366140

USER NAME = MARINIEJ	DESIGNED - RW	REVISED -
	DRAWN - RW	REVISED -
PLOT SCALE = 3.9370' / mm	CHECKED - EM	REVISED -
PLOT DATE = 10/15/2020	DATE - 7/10/2020	REVISED -

**STATE OF ILLINOIS  
DEPARTMENT OF TRANSPORTATION**

<b>SITE PLAN - REMOVAL PONTIAC MAINTENANCE FACILITY</b>	
SCALE:	SHEET 1 OF 1 SHEETS STA. TO STA.

F.A.P. RTE. 673	SECTION (112X)RS.MG	COUNTY LIVINGSTON	TOTAL SHEETS 7	SHEET NO. 6
			CONTRACT NO. 66L40	
ILLINOIS FED. AID PROJECT				



**SITE PLAN - RESURFACING  
PONTIAC MAINTENANCE FACILITY**

**LEGEND**

- POLYMER HOT-MIX ASPHALT BINDER CSE. IL -19.0, N70 (2½" LIFT)
- POLYMER HOT-MIX ASPHALT SURFACE CSE. IL-9.5, MIX C, N70 (1½" LIFT)

MODEL: Default  
 FILE: h:\mfc\_666\p\pub\baronm.dwg  
 I:\projects\666\DOT\Documents\DOT\Office\Drawings\3\Projects\666\DOT\666\666\666.dwg

USER NAME = MARINIEJ	DESIGNED - RW	REVISED -
	DRAWN - RW	REVISED -
PLOT SCALE = 3.9370' / mm	CHECKED - EM	REVISED -
PLOT DATE = 10/15/2020	DATE - 7/10/2020	REVISED -

**STATE OF ILLINOIS  
DEPARTMENT OF TRANSPORTATION**

<b>SITE PLAN - RESURFACING PONTIAC MAINTENANCE FACILITY</b>			
SCALE:	SHEET 1 OF 1 SHEETS	STA.	TO STA.

F.A.P. RTE.	SECTION	COUNTY	TOTAL SHEETS	SHEET NO.
673	(112X)RS.MG	LIVINGSTON	7	7
CONTRACT NO. 66L40				
ILLINOIS FED. AID PROJECT				