

STATE OF ILLINOIS  
DEPARTMENT OF TRANSPORTATION  
DIVISION OF HIGHWAYS

**PROPOSED  
HIGHWAY PLANS**

FAI 74 ROUTE I-74  
SECTION 72-[8LS-11,(9,9-1)LS-12]  
PROJECT: LANDSCAPING  
PEORIA COUNTY

C-94-121-20

FAI RTE.	SECTION	COUNTY	TOTAL SHEETS	SHEET NO.
74	72-[8LS-11,(9,9-1)LS-12]	PEORIA	13	1
		ILLINOIS	CONTRACT NO. 68F97	

D-94-086-20



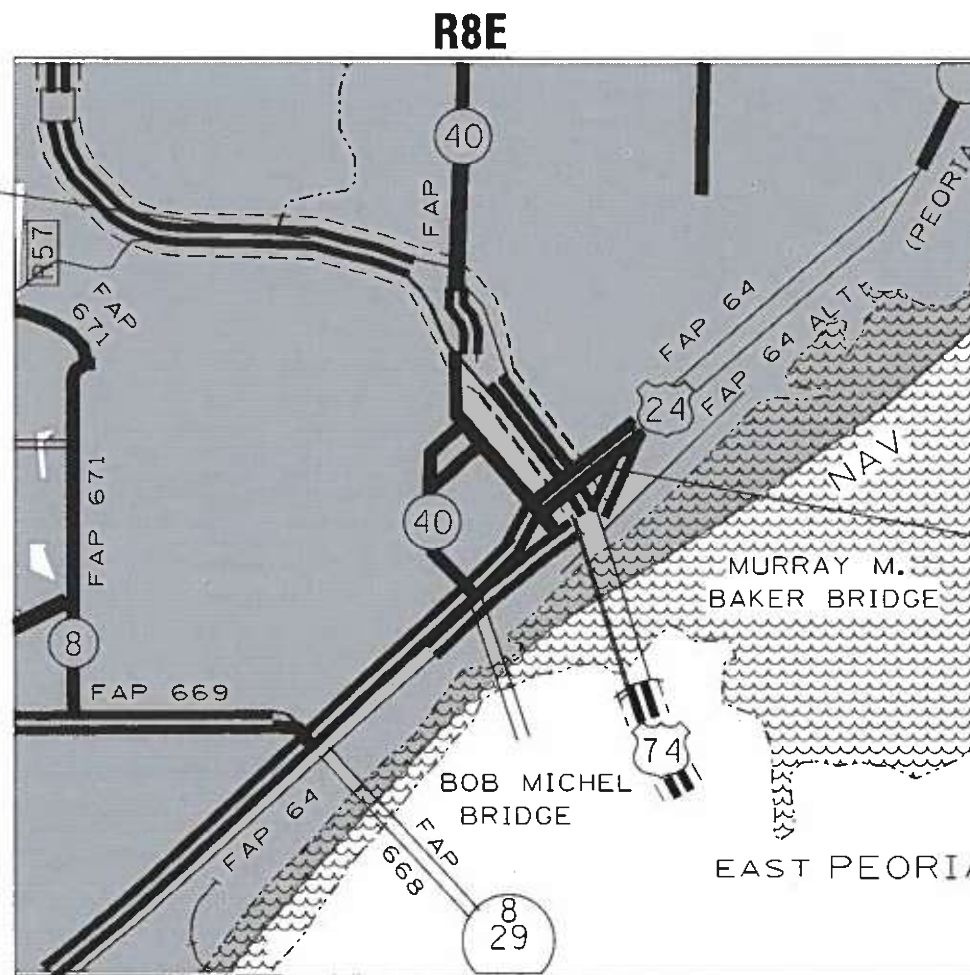
INDEX OF SHEETS

- 1 COVER SHEET
- 2 GENERAL NOTES & COMMITMENTS / CALENDAR OF LANDSCAPING MAINTENANCE SUMMARY OF QUANTITIES
- 3 SCHEDULE OF PERENNIAL PLANT CARE
- 4 SCHEDULE OF LANDSCAPING ITEMS
- 5 OVERALL PLAN
- 6 PLAN SHEET - LAYOUT 2
- 7 PLAN SHEET - LAYOUT 3
- 8 PLAN SHEET - LAYOUT 4
- 9 PLAN SHEET - LAYOUT 5
- 10 PLAN SHEET - LAYOUT 6
- 11 PLAN SHEET - LAYOUT 7
- 12 PLANTER DETAIL
- 13

HIGHWAY STANDARDS

- 701101-05 701301-04
- 701106-02 701901-08
- 701201-05

PROJECT BEGINS  
STA. 148+400



T9N

PROJECT ENDS  
STA. 150+400

DESCRIPTION OF WORK

THIS PROJECT INVOLVES LANDSCAPING MAINTENANCE ALONG I-74 FROM NORTH STREET TO THE ILLINOIS RIVER IN PEORIA.

FULL SIZE PLANS HAVE BEEN PREPARED USING STANDARD ENGINEERING SCALES. REDUCED SIZED PLANS WILL NOT CONFORM TO STANDARD SCALES. IN MAKING MEASUREMENTS ON REDUCED PLANS, THE ABOVE SCALES MAY BE USED.

J.U.L.I.E.  
JOINT UTILITY LOCATION INFORMATION FOR EXCAVATION  
1-800-892-0123  
OR 811

PROJECT ENGINEER: MAUREEN ADDIS 309-671-3454  
PROJECT MANAGER: SUSAN DAVIS 309-671-4485

CONTRACT NO. 68F97  
CATALOG NO. 036100-00D

GROSS LENGTH = 7,286.20 FT. = 1.38 MILE  
NET LENGTH = 7,286.20 FT. = 1.38 MILE

STATE OF ILLINOIS  
DEPARTMENT OF TRANSPORTATION

SUBMITTED October 22, 2020  
[Signature]  
REGIONAL ENGINEER

December 4, 2020  
[Signature]  
ENGINEER OF DESIGN AND ENVIRONMENT

December 4, 2020  
[Signature]  
DIRECTOR OF HIGHWAYS PROJECT IMPLEMENTATION

PRINTED BY THE AUTHORITY  
OF THE STATE OF ILLINOIS

# JOB SPECIFIC NOTES

The contractor will be responsible for field verification of locations for all landscaping items. Numbers indicated on the layouts are an estimate and do not reflect the exact total.

The removal of dead underbrush, debris, litter, and other miscellaneous items shall be completed and will be considered included in the cost of the associated pay items.

**SELECTIVE CLEARING** shall include removal of naturally occurring logs, shrubs, bushes, saplings, weeds, other vegetation and stumps of a diameter less than 6 in. at locations specified by the Engineer. All work will be done in accordance with the special provisions. All costs for removing living and dead plants shall be included in the pay item **SELECTIVE CLEARING**.

**PERENNIAL PLANT CARE** shall include mulching, weeding, and edging of the perennial beds. The cost for edging, weeding and mulching shall be included in the pay item for **PERENNIAL PLANT CARE**.

**SHRUB CARE** Shall include weeding, replenishing mulch, pruning of shrubs from access control fence debris removal and disposal, insect control, pruning, edging, volunteer trees and other plant care work items for each work cycle as described in the special provisions and as directed by the Engineer. Payment will only be done at locations in which shrubs are actually pruned, trimmed, mulched or have been maintained. Where shrub care is not needed, mulching work shall be paid for at that location per section 109.04.

**TREE CARE** Shall include weeding, replenishing mulch, debris removal and disposal, insect control, pruning, edging, and other plant care work items for each work cycle as described in the special provisions and as directed by the Engineer. Where pruning is not needed, mulching work shall be paid for at that location per section 109.04.

**MOWING (SPECIAL)** shall include trimming along walls and foundations. The cost for trimming shall be included in the cost of **MOWING (SPECIAL)**.

Trees, shrubs and perennial plants shall not encroach upon the sidewalks and gutters. The cost to trim these items will be included in the cost of the associated pay items.

## PERENNIAL PLANTS

There are several planters along Perry, Monroe, Madison, and Jefferson Streets. The planters in these locations will be filled with plantings listed on the table in the Schedule of Quantities. All weeding and dirt required for these planters shall be included in the payitem for the plants specified.

## COMMITMENTS

Commitments are not to be altered without the written consent of all parties to which the commitment was made.

No Commitments have been made on this project.

2021 WORK DATES		CONSTRUCTION WORK	ESTABLISHMENT WORK
FROM	TO		
MAY 1	OCT 1	Mowing & Perennial Plant Care	Mow turf areas to a turf height of 3 inches. (Layout 2, 3, 4, 5 &7) All applicable layouts 1-2 times per month at Engineer's discretion
MAY 1	MAY 31	Weed Control placed within 5 days of start date	One cycle all layouts
MAY 1	MAY 31	Selective Clearing, Shrub Care, and Tree Care  Work cycle must be complete and acceptable on the inspection date of June 1.	1 Time All Layouts

MODEL: Default  
 FILE: Model: Job Specific Notes & Commitments  
 PROJECT: ILLINOIS STATE DEPARTMENT OF TRANSPORTATION  
 PROJECT NO.: 68F97  
 SHEET NO.: 2  
 DATE: 10/23/2020

USER NAME = eversct	DESIGNED -	REVISED -
	DRAWN -	REVISED -
PLOT SCALE = 78.6960' / in.	CHECKED -	REVISED -
PLOT DATE = 10/23/2020	DATE -	REVISED -

**STATE OF ILLINOIS  
DEPARTMENT OF TRANSPORTATION**

**JOB SPECIFIC NOTES & COMMITMENTS  
CALENDAR OF LANDSCAPING ITEMS**

SCALE: SHEET OF SHEETS STA. TO STA.

F.A.I. RTE.	SECTION	COUNTY	TOTAL SHEETS	SHEET NO.
74	72-[8LS-11,(9,9-1)LS-12]	PEORIA	13	2
CONTRACT NO. 68F97			ILLINOIS FED. AID PROJECT	

CODE NO.	ITEM	UNIT	TOTAL QUANTITY	CONST. CODE
				0031 PEORIA CO. 100% STATE URBAN
25000210	SEEDING, CLASS 2A	ACRE	0.05	0.05
28100701	STONE RIP RAP, CLASS A-1	SQ YD	367	367
67100100	MOBILIZATION	L SUM	1	1
C2C03520	SHRUB, HYDRANGEA PANICULATA (LIME LIGHT PANICLE HYDRANGEA), 2' HEIGHT, CONTAINER GROWN	EACH	33	33
K0012975	PERENNIAL PLANTS, ORNAMENTAL TYPE, 4" POT	UNIT	1.36	1.36
K0012990	PERENNIAL PLANTS, ORNAMENTAL TYPE, GALLON POT	UNIT	0.4	0.4
K0026700	TREE CARE	EACH	201	201
K0026810	SHRUB CARE	EACH	5267	5267
K0026850	PERENNIAL PLANT CARE	SQ YD	4600	4600
K0029634	WEED CONTROL, PRE-EMERGENT GRANULAR HERBICIDE	POUND	900	900
K1004539	PLANT WATERING	UNIT	2	2
X0321501	WEED BARRIER FABRIC	SQ YD	367	367
X2503110	MOWING (SPECIAL)	ACRE	58	58
X7010216	TRAFFIC CONTROL AND PROTECTION (SPECIAL)	L SUM	1	1
Z0064600	SELECTIVE CLEARING	ACRE	0.15	0.15

MODEL:\Dof\aut  
 FILE NAME: P:\A\l\ar\com\st\illinois\p\j\DOT\Documents\DOT - District 4\Projects\04\_68F97\CADD\as\CD\sheet\0468F97.sht:landsc.dgn

USER NAME = everscl	DESIGNED -	REVISED -
	DRAWN -	REVISED -
PLOT SCALE = 78.6960' / in.	CHECKED -	REVISED -
PLOT DATE = 10/23/2020	DATE -	REVISED -

**STATE OF ILLINOIS**  
**DEPARTMENT OF TRANSPORTATION**

**SUMMARY OF QUANTITIES**

F.A.I. RTE.	SECTION	COUNTY	TOTAL SHEETS	SHEET NO.
74	72-[8LS-11,(9,9-1)LS-12]	PEORIA	13	3
CONTRACT NO. 68F97				
ILLINOIS FED. AID PROJECT				

**LEGEND:**

- L2 LANDSCAPE LAYOUT-2
- L3 LANDSCAPE LAYOUT-3
- L4 LANDSCAPE LAYOUT-4
- L5 LANDSCAPE LAYOUT-5
- L6 LANDSCAPE LAYOUT-6
- L7 LANDSCAPE LAYOUT-7

KEY	ITEM	COMMON NAME	UNIT	LAYOUT LOCATION							TOTAL
				L2	L3	L4	L5	L6	L7		
DECIDUOUS TREES											
GD	GYMNOCLADUS DIOICUS	KENTUCKY COFFEE TREE	EACH	0	4	0	8	0	0	12	
QA	QUERCUS BICOLOR	SWAMP WHITE OAK	EACH	0	15	4	1	4	25	49	
AN	ACER NIGRA	BLACK MAPLE	EACH	0	3	0	0	0	0	3	
GB	GINKGO BILOBA	GINKGO	EACH	0	7	0	0	0	2	9	
GT	GLEDTISIA TRIACANTHOS	SKYLINE HONEYLOCUST	EACH	0	0	2	0	4	0	6	
UR	ULMUS REGAL	REGAL ELM	EACH	0	10	0	0	0	13	23	
ORNAMENTAL TREES											
AC	AMELANCHIER X GRANDIFLORA	APPLE SERVICEBERRY	EACH	0	0	0	1	0	3	4	
SA	SYRINGA RETICULATA	JAPANESE LILAC	EACH	0	18	0	0	0	0	18	
SP	SYRINGA PEKINENSIS	CHINESE LILAC	EACH	0	0	0	7	16	0	23	
MP	MALUS PRAIRIFIRE	PRAIRIE FIRE CRABAPPLE	EACH	0	7	3	0	3	0	13	
EVERGREEN TREES											
PN	PINUS NIGRA	AUSTRIAN PINE	EACH	0	13	3	16	3	6	41	
<b>TOTAL NUMBER OF TREES</b>			<b>EACH</b>	<b>0</b>	<b>77</b>	<b>12</b>	<b>33</b>	<b>30</b>	<b>49</b>	<b>201</b>	
SHRUBS											
FS	FORSYTHIA x INTERMEDIA	NORTHERN SUN FORSYTHIA	EACH	0	90	0	0	165	140	395	
HV	HAMAMELIS VERNALIS	VERNAL WITCH HAZEL	EACH	0	100	0	5	0	0	105	
PA	PEROVSKIA ATRIPLICIFOLIA	RUSSIAN SAGE	EACH	0	290	200	0	0	0	490	
RA	RHUS AROMATICA	FRAGRANT SUMAC	EACH	0	445	0	85	70	583	1183	
RG	RHUS GLABRA	SMOOTH SUMAC	EACH	0	75	0	0	0	0	75	
SPA	SYRINGA PATULA MISS KIM	MISS KIM LILAC	EACH	0	300	276	60	0	90	726	
RS	ARONIA MELANOCARPA	BLACK CHOKEBERRY	EACH	0	475	138	9	34	0	656	
RH	ROBINIA HISPIDA	BRISTLY LOCUST	EACH	0	0	30	0	30	0	60	
RRC	ROSA	ROSE	EACH	0	45	0	179	0	200	424	
EVERGREEN SHRUBS											
JH	JUNIPERUS HORIZONTALIS HUG	HUGHES CREEPING JUNIPER	EACH	0	0	100	108	295	90	593	
JC	JUNIPERUS CHINENSIS	KALLAYS COMPACTA	EACH	0	110	230	80	120	20	560	
<b>TOTAL NUMBER OF SHRUBS</b>			<b>EACH</b>	<b>0</b>	<b>1930</b>	<b>974</b>	<b>526</b>	<b>714</b>	<b>1123</b>	<b>5267</b>	
<b>TOTAL PERENNIAL PLANT CARE</b>			<b>SQ YD</b>	<b>490</b>	<b>1150</b>	<b>1676</b>	<b>0</b>	<b>0</b>	<b>1284</b>	<b>4600</b>	

MODEL: Default  
 FILE: Model: Project\PublicRoom.dwg  
 PROJECT: ILLINOIS STATE DEPARTMENT OF TRANSPORTATION  
 PROJECT: ILLINOIS STATE DEPARTMENT OF TRANSPORTATION  
 PROJECT: ILLINOIS STATE DEPARTMENT OF TRANSPORTATION

USER NAME = eversct	DESIGNED -	REVISED -
PLOT SCALE = 78.6960' / in.	DRAWN -	REVISED -
PLOT DATE = 10/23/2020	CHECKED -	REVISED -
	DATE -	REVISED -

**STATE OF ILLINOIS**  
**DEPARTMENT OF TRANSPORTATION**

**SCHEDULE OF QUANTITIES**

SCALE:	SHEET	OF	SHEETS	STA.	TO	STA.
--------	-------	----	--------	------	----	------

F.A.I. RTE.	SECTION	COUNTY	TOTAL SHEETS	SHEET NO.
74	72-8(LS-11,(9,9-1)LS-12]	PEORIA	13	4
CONTRACT NO. 68F97				
ILLINOIS			FED. AID PROJECT	

SEEDING, CLASS 2A (25000210)	
LOCATION	SQ YD
LAYOUT 3	144
TOTAL	144
TOTAL	.05 ACRES

STONE RIP RAP, CLASS A1 (28100701)	
LOCATION	SQ YD
LAYOUT 3	162
LAYOUT 4	205
TOTAL	367

MOBILIZATION (67100100)		
LOCATION	UNIT	QTY
JOBSITE	L. SUM	1
TOTAL		1

SHRUB CARE (K0026810)	
LOCATION	EACH
LAYOUT 2	0
LAYOUT 3	1930
LAYOUT 4	974
LAYOUT 5	526
LAYOUT 6	714
LAYOUT 7	1123
TOTAL	5267

TREE CARE (K0026700)	
LOCATION	EACH
LAYOUT 2	0
LAYOUT 3	77
LAYOUT 4	12
LAYOUT 5	33
LAYOUT 6	30
LAYOUT 7	49
TOTAL	201

PERENNIAL PLANT CARE (K0026850)	
LOCATION	SQ YD
LAYOUT 2	490
LAYOUT 3	1150
LAYOUT 4	1676
LAYOUT 5	0
LAYOUT 6	0
LAYOUT 7	1284
TOTAL	4600

NEW PLANTINGS		LAYOUT LOCATION							TOTAL
ITEM	UNIT	L2	L3	L4	L5	L6	L7	TOTAL	
<i>Layout 3 along Ramp F-1</i>									
								<b>C2C03520</b>	
								<b>EACH</b>	
SHRUB, HYDRANGA PANICULATA (LIME LIGHT PANICLE HYDRANGA), 2' HEIGHT, CONTAINER GROWN	EACH	0	33	0	0	0	0	<b>33</b>	
<i>Planters</i>									
								<b>K0012990</b>	
								<b>UNIT</b>	
PERENNIAL PLANTS 1, ORNAMENTAL TYPE, GALLON Dipladenias (Red)	UNIT	0	0	0	10	20	10	<b>0.4</b>	
								<b>K0012975</b>	
								<b>UNIT</b>	
PERENNIAL PLANTS, ORNAMENTAL TYPE, 4" POT	UNIT							<b>1.36</b>	
Green Sweet Potato Vine	EACH	0	0	0	4	8	4	<b>1.36</b>	
Dracaena Spike 'Purple Tower'	EACH	0	0	0	12	24	12		
Canna "Australia"	EACH	0	0	0	4	8	4		
'Orange Marmalade' Crossandra	EACH	0	0	0	10	20	10		
Purple Sweet Potato Vines	EACH	0	0	0	4	8	4		
<b>TOTAL</b>		<b>0</b>	<b>33</b>	<b>0</b>	<b>44</b>	<b>88</b>	<b>44</b>		

**Note: 1 unit = 100 plants**

WEED CONTROL, PRE-EMERGENT GRANULAR HERBICIDE (K0029634)		
LOCATION	UNIT	QTY
JOBSITE	POUND	900
TOTAL		900

WEED BARRIER FABRIC (X0321501)	
LOCATION	SQ YD
LAYOUT 3	162
LAYOUT 4	205
TOTAL	367

SELECTIVE CLEARING (Z0064600)	
LOCATION	SQ YD
LAYOUT 2	0
LAYOUT 3	306
LAYOUT 4	205
LAYOUT 5	289
LAYOUT 6	0
LAYOUT 7	0
TOTAL	800 SY
TOTAL	.15 ACRES

PLANT WATERING (K1004539)	
LOCATION	GALLON
JOBSITE	2000
TOTAL	2000
TOTAL	2 UNITS

TRAFFIC CONTROL AND PROTECTION (SPECIAL) (X7010216)		
LOCATION	UNIT	QTY
JOBSITE	L. SUM	1
TOTAL		1

**1 UNIT = 1000 Gallons**

Perennial Plant Care Work Schedule	
One full cycle of work, as directed by specifications, for each listed month is required for all	May
	June
	July
	August
	September

Mowing Work Schedule	
1-2 Mowings (at discretion of Engineer) are required per listed month, for all layouts	May
	June
	July
	August
	September

MOWING (SPECIAL) (X2503110)		
LOCATION	SQ FT	ACRES
LAYOUT 2	43995.6	1.01
LAYOUT 3	67953.6	1.56
LAYOUT 4	38332.8	0.88
LAYOUT 5	36154.8	0.83
LAYOUT 6	0	0
LAYOUT 7	66646.8	1.53
TOTAL		5.8

**Total for contract = 58 Acres (2 times per 5 months)**

MODEL: Default  
FILE: Model: P:\pub\lanscom.dwg  
PROJECT: R:\Projects\DOT Documents\DOT Office\Drawings\Drawings\2020\68F97\2020-06-04\68F97.dwg

USER NAME = eversct	DESIGNED -	REVISED -
	DRAWN -	REVISED -
PLOT SCALE = 78.6960' / in.	CHECKED -	REVISED -
PLOT DATE = 10/23/2020	DATE -	REVISED -

**STATE OF ILLINOIS  
DEPARTMENT OF TRANSPORTATION**

SCHEDULE OF QUANTITIES			
SCALE:	SHEET	OF SHEETS	STA. TO STA.

F.A.I. RTE.	SECTION	COUNTY	TOTAL SHEETS	SHEET NO.
74	72-(8L5-11,(9,9-1)L5-12)	PEORIA	13	5
				CONTRACT NO. 68F97
				ILLINOIS FED. AID PROJECT



MODEL: Default  
 FILE: Model: ProjectRoom.dwg  
 PROJECT: \\projects\104\_68f97\CADD\Drawings\Drawings\104\_68f97.dwg  
 SHEET: 104\_68f97.dwg

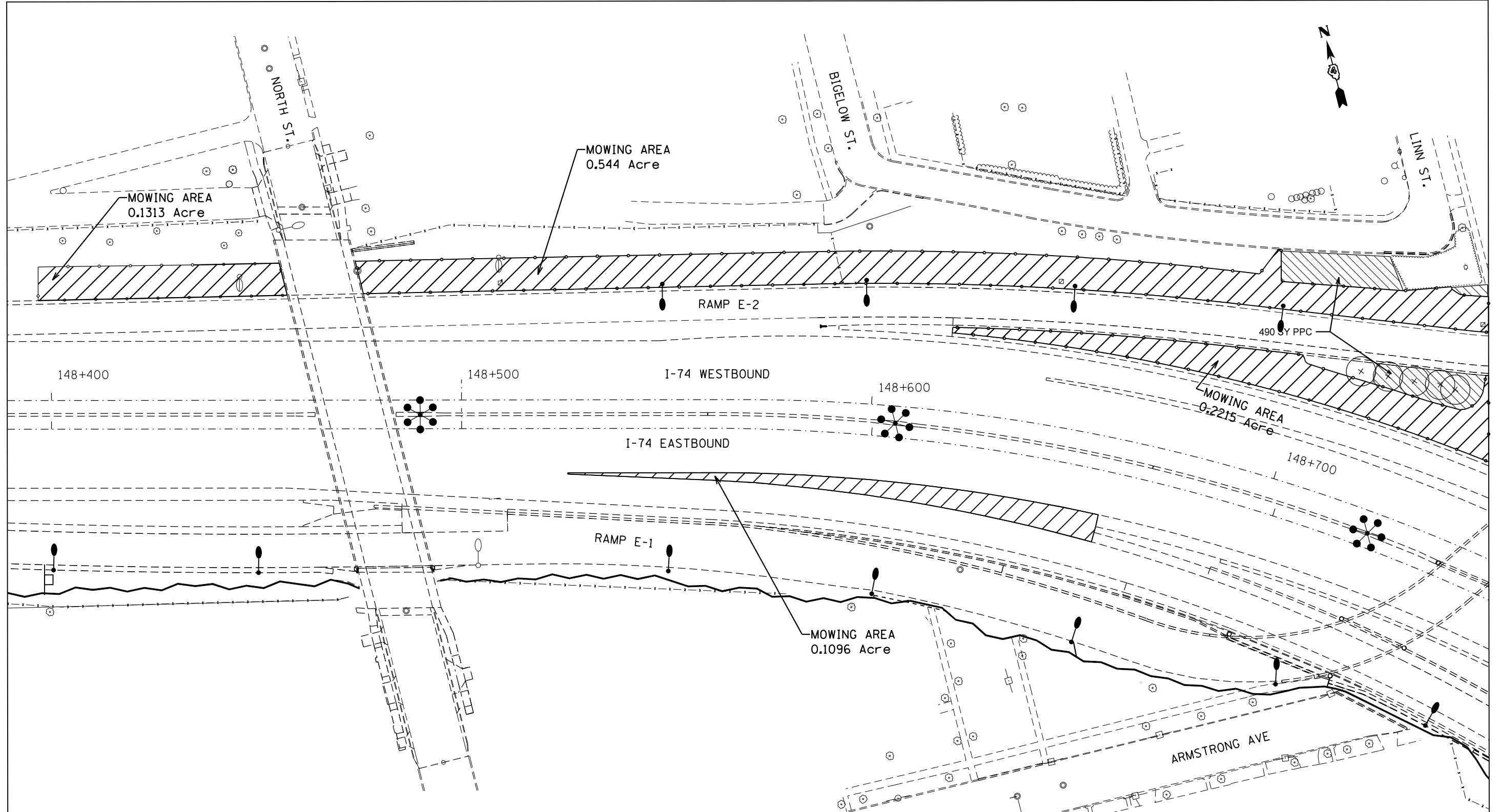
USER NAME = eversct	DESIGNED -	REVISED -
	DRAWN -	REVISED -
PLOT SCALE = 78.6960' / in.	CHECKED -	REVISED -
PLOT DATE = 10/23/2020	DATE -	REVISED -

**STATE OF ILLINOIS  
DEPARTMENT OF TRANSPORTATION**

**OVERALL PLAN**

SCALE: SHEET OF SHEETS STA. TO STA.

F.A.I. RTE.	SECTION	COUNTY	TOTAL SHEETS	SHEET NO.
74	72-(8LS-11,(9,9-1)LS-12)	PEORIA	13	6
CONTRACT NO. 68F97				
ILLINOIS FED. AID PROJECT				



LEGEND

- MOWING
- SHRUBS
- EVERGREEN TREE
- SMALL ORNAMENTAL TREE
- SHADE TREE (5' DIA. MULCH SAUCER-TYP. -FOR ALL TREES & SHRUBS)
- PERENNIAL PLANT CARE (PPC)
- PLANT KEY QUANTITY OF SPECIFIED PLANT
- SHRUB CARE
- SHRUBS DENOTED WITH AN • SHALL BE TRIMMED TO 5'
- SELECTIVE CLEARING

MOWING AREA LAYOUT 2 - 1.01 ACRES

MODEL: Default  
 FILE: MowArea\_Plan.svd  
 PROJECT: ILLINOIS STATE ROADWAY IMPROVEMENTS  
 OFFICE: DISTRICT 4  
 PROJECT: ILLINOIS STATE ROADWAY IMPROVEMENTS  
 SHEET: 74-815-11(9,9-1)S-12

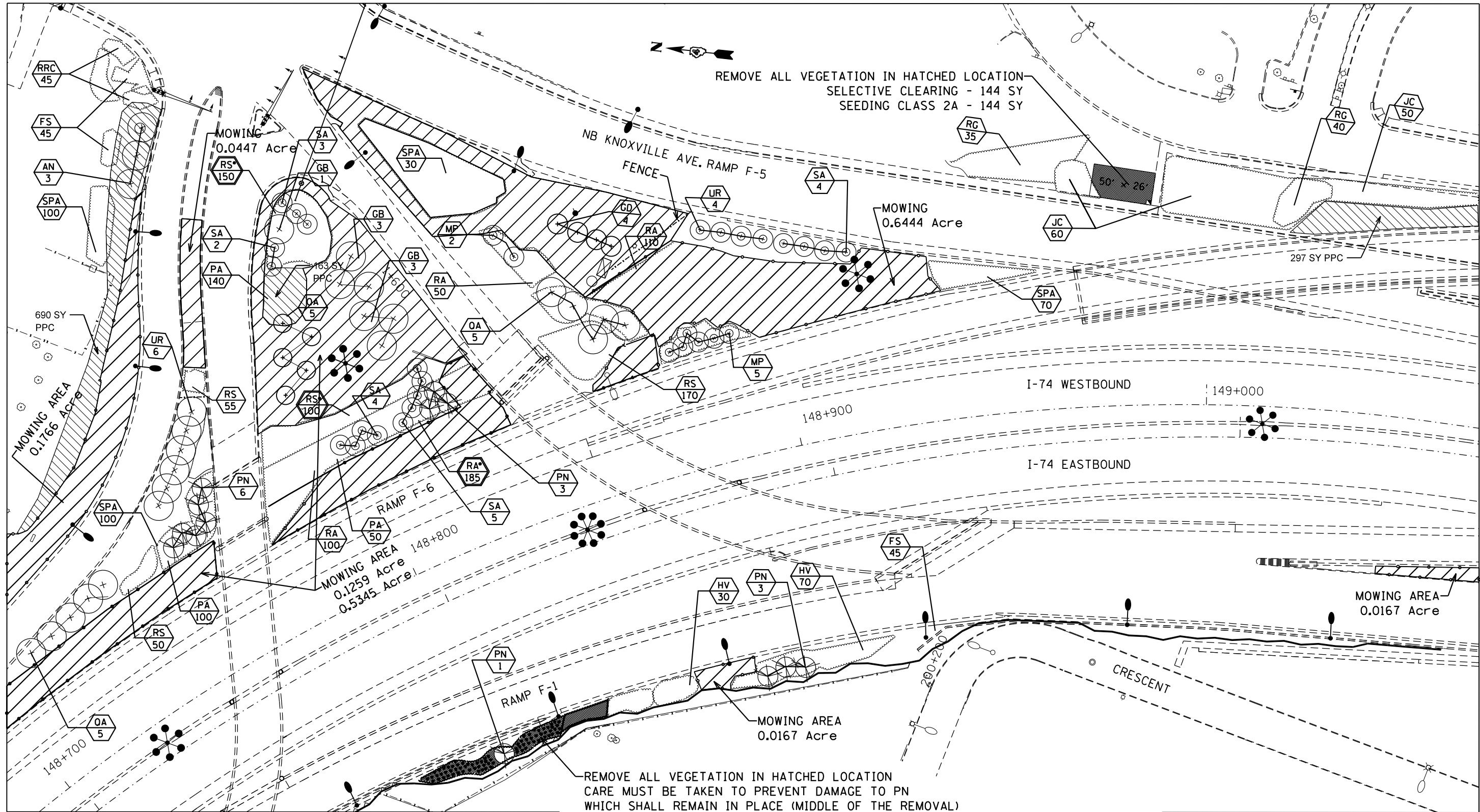
USER NAME = eversct	DESIGNED -	REVISED -
	DRAWN -	REVISED -
PLOT SCALE = 78.6960' / in.	CHECKED -	REVISED -
PLOT DATE = 10/23/2020	DATE -	REVISED -

**STATE OF ILLINOIS**  
**DEPARTMENT OF TRANSPORTATION**

<b>PLAN SHEET - LAYOUT 2</b>				
SCALE:	SHEET	OF	SHEETS	STA. TO STA.

F.A.I. RTE.	SECTION	COUNTY	TOTAL SHEETS	SHEET NO.
74	72-815-11(9,9-1)S-12	PEORIA	13	7
CONTRACT NO. 68F97				
ILLINOIS FED. AID PROJECT				





**LEGEND**

- MOWING
- SHRUBS
- EVERGREEN TREE
- SMALL ORNAMENTAL TREE
- SHADE TREE (5' DIA. MULCH SAUCER-TYP. -FOR ALL TREES & SHRUBS)
- PERENNIAL PLANT CARE (PPC)
- PLANT KEY QUANTITY OF SPECIFIED PLANT
- SHRUB CARE
- SHRUBS DENOTED WITH AN • SHALL BE TRIMMED TO 5'
- SELECTIVE CLEARING

**MOWING AREA LAYOUT 3 - 1.56 ACRES**

MODEL: Default  
 FILE: MOWING AREA LAYOUT 3.dwg  
 PROJECT: I-74/US-40/US-52/US-152/US-156/US-158/US-160/US-162/US-164/US-166/US-168/US-170/US-172/US-174/US-176/US-178/US-180/US-182/US-184/US-186/US-188/US-190/US-192/US-194/US-196/US-198/US-200/US-202/US-204/US-206/US-208/US-210/US-212/US-214/US-216/US-218/US-220/US-222/US-224/US-226/US-228/US-230/US-232/US-234/US-236/US-238/US-240/US-242/US-244/US-246/US-248/US-250/US-252/US-254/US-256/US-258/US-260/US-262/US-264/US-266/US-268/US-270/US-272/US-274/US-276/US-278/US-280/US-282/US-284/US-286/US-288/US-290/US-292/US-294/US-296/US-298/US-300/US-302/US-304/US-306/US-308/US-310/US-312/US-314/US-316/US-318/US-320/US-322/US-324/US-326/US-328/US-330/US-332/US-334/US-336/US-338/US-340/US-342/US-344/US-346/US-348/US-350/US-352/US-354/US-356/US-358/US-360/US-362/US-364/US-366/US-368/US-370/US-372/US-374/US-376/US-378/US-380/US-382/US-384/US-386/US-388/US-390/US-392/US-394/US-396/US-398/US-400/US-402/US-404/US-406/US-408/US-410/US-412/US-414/US-416/US-418/US-420/US-422/US-424/US-426/US-428/US-430/US-432/US-434/US-436/US-438/US-440/US-442/US-444/US-446/US-448/US-450/US-452/US-454/US-456/US-458/US-460/US-462/US-464/US-466/US-468/US-470/US-472/US-474/US-476/US-478/US-480/US-482/US-484/US-486/US-488/US-490/US-492/US-494/US-496/US-498/US-500/US-502/US-504/US-506/US-508/US-510/US-512/US-514/US-516/US-518/US-520/US-522/US-524/US-526/US-528/US-530/US-532/US-534/US-536/US-538/US-540/US-542/US-544/US-546/US-548/US-550/US-552/US-554/US-556/US-558/US-560/US-562/US-564/US-566/US-568/US-570/US-572/US-574/US-576/US-578/US-580/US-582/US-584/US-586/US-588/US-590/US-592/US-594/US-596/US-598/US-600/US-602/US-604/US-606/US-608/US-610/US-612/US-614/US-616/US-618/US-620/US-622/US-624/US-626/US-628/US-630/US-632/US-634/US-636/US-638/US-640/US-642/US-644/US-646/US-648/US-650/US-652/US-654/US-656/US-658/US-660/US-662/US-664/US-666/US-668/US-670/US-672/US-674/US-676/US-678/US-680/US-682/US-684/US-686/US-688/US-690/US-692/US-694/US-696/US-698/US-700/US-702/US-704/US-706/US-708/US-710/US-712/US-714/US-716/US-718/US-720/US-722/US-724/US-726/US-728/US-730/US-732/US-734/US-736/US-738/US-740/US-742/US-744/US-746/US-748/US-750/US-752/US-754/US-756/US-758/US-760/US-762/US-764/US-766/US-768/US-770/US-772/US-774/US-776/US-778/US-780/US-782/US-784/US-786/US-788/US-790/US-792/US-794/US-796/US-798/US-800/US-802/US-804/US-806/US-808/US-810/US-812/US-814/US-816/US-818/US-820/US-822/US-824/US-826/US-828/US-830/US-832/US-834/US-836/US-838/US-840/US-842/US-844/US-846/US-848/US-850/US-852/US-854/US-856/US-858/US-860/US-862/US-864/US-866/US-868/US-870/US-872/US-874/US-876/US-878/US-880/US-882/US-884/US-886/US-888/US-890/US-892/US-894/US-896/US-898/US-900/US-902/US-904/US-906/US-908/US-910/US-912/US-914/US-916/US-918/US-920/US-922/US-924/US-926/US-928/US-930/US-932/US-934/US-936/US-938/US-940/US-942/US-944/US-946/US-948/US-950/US-952/US-954/US-956/US-958/US-960/US-962/US-964/US-966/US-968/US-970/US-972/US-974/US-976/US-978/US-980/US-982/US-984/US-986/US-988/US-990/US-992/US-994/US-996/US-998/US-1000

USER NAME = eversct	DESIGNED -	REVISED -
PLOT SCALE = 78.6960' / in.	DRAWN -	REVISED -
PLOT DATE = 10/23/2020	CHECKED -	REVISED -
	DATE -	REVISED -

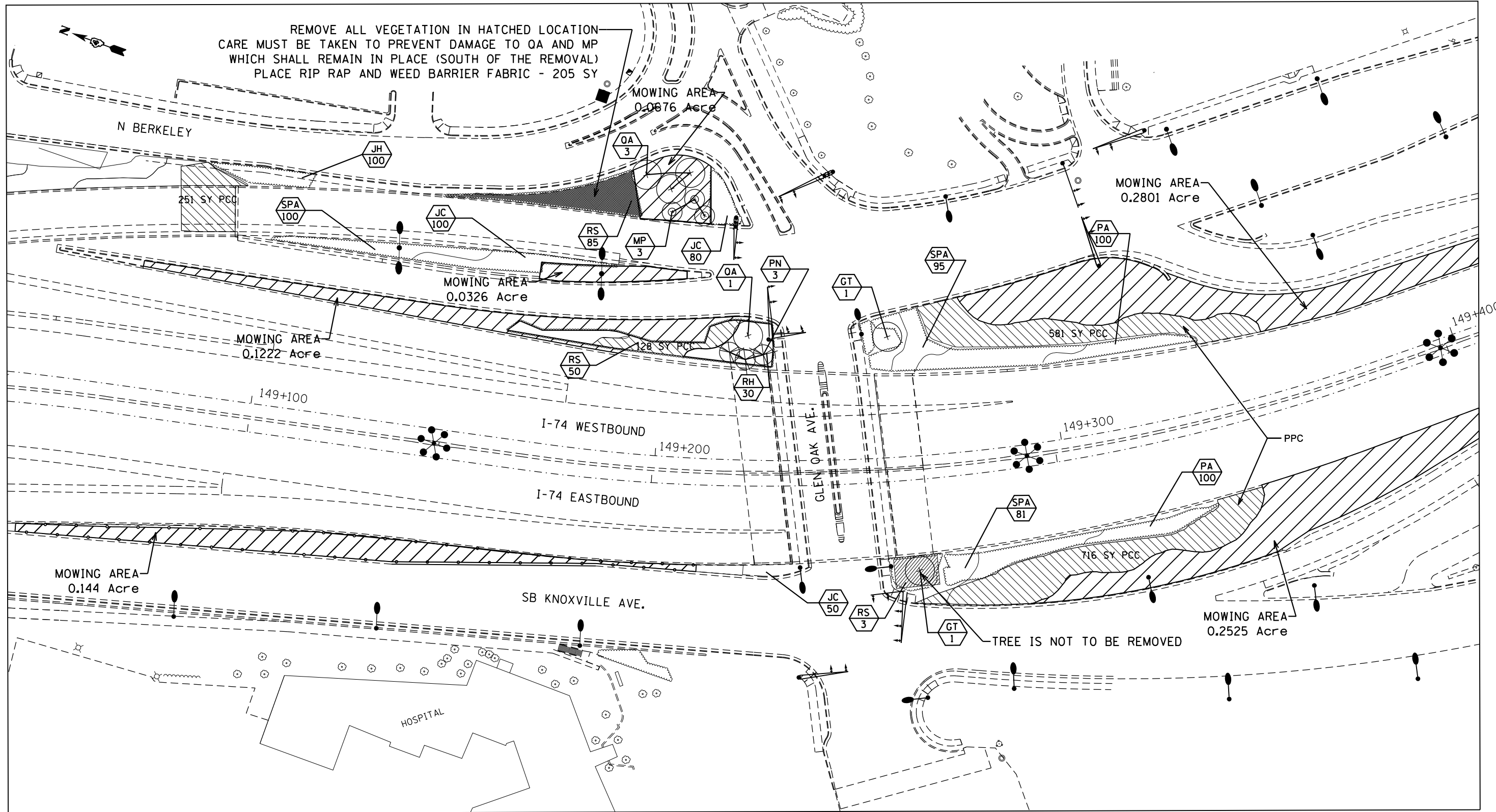
**STATE OF ILLINOIS  
DEPARTMENT OF TRANSPORTATION**

**PLAN SHEET - LAYOUT 3**

SCALE: SHEET OF SHEETS STA. TO STA.

F.A.I. RTE.	SECTION	COUNTY	TOTAL SHEETS	SHEET NO.
74	72-(8LS-11,(9,9-1)LS-12)	PEORIA	13	8
CONTRACT NO. 68F97				
ILLINOIS FED. AID PROJECT				





REMOVE ALL VEGETATION IN HATCHED LOCATION  
 CARE MUST BE TAKEN TO PREVENT DAMAGE TO QA AND MP  
 WHICH SHALL REMAIN IN PLACE (SOUTH OF THE REMOVAL)  
 PLACE RIP RAP AND WEED BARRIER FABRIC - 205 SY

LEGEND

- MOWING
- SHRUBS
- EVERGREEN TREE
- SMALL ORNAMENTAL TREE
- SHADE TREE (5' DIA. MULCH SAUCER-TYP. -FOR ALL TREES & SHRUBS)
- PERENNIAL PLANT CARE (PPC)
- PLANT KEY QUANTITY OF SPECIFIED PLANT
- SHRUB CARE
- SHRUBS DENOTED WITH AN • SHALL BE TRIMMED TO 5'
- SELECTIVE CLEARING

MOWING AREA LAYOUT 4 - 0.88 ACRES

MODEL: Default  
 FILE: \\nas01\pub\baronm.d\at\illinois.gov\PROJECTS\DOT\Documents\DOT\_Offices\District\_4\Projects\ID4\_68F97\CADD\Drawings\CD\Drawings\CD68F97-2-18-2020.dwg

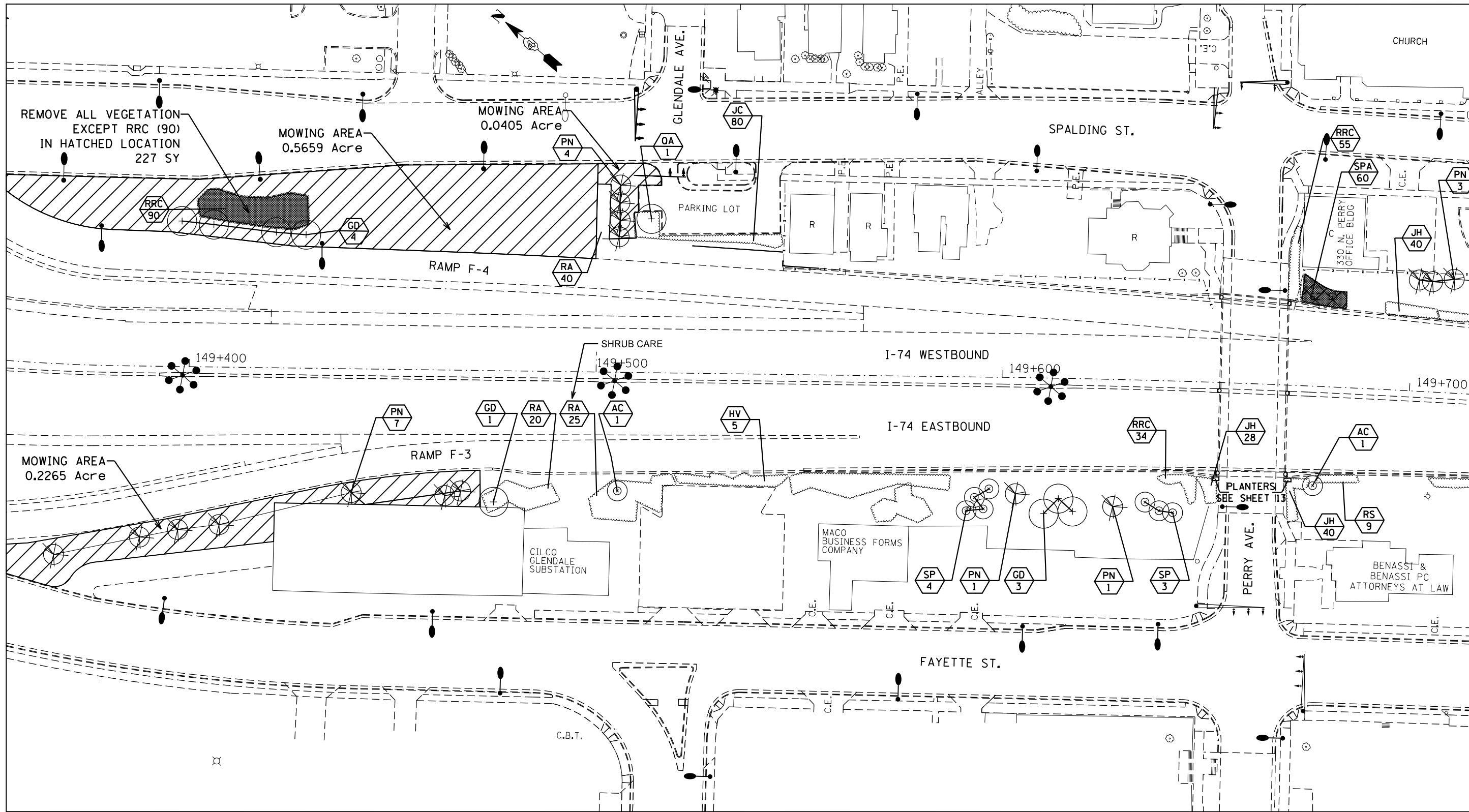
USER NAME = eversct	DESIGNED -	REVISED -
PLOT SCALE = 78.6960' / in.	DRAWN -	REVISED -
PLOT DATE = 10/23/2020	CHECKED -	REVISED -
	DATE -	REVISED -

STATE OF ILLINOIS  
 DEPARTMENT OF TRANSPORTATION

PLAN SHEET - LAYOUT 4

SCALE: SHEET OF SHEETS STA. TO STA.

F.A.I. RTE.	SECTION	COUNTY	TOTAL SHEETS	SHEET NO.
74	72-(8LS-11,(9,9-1)LS-12)	PEORIA	13	9
CONTRACT NO. 68F97				
ILLINOIS FED. AID PROJECT				



**LEGEND**

- MOWING
- SHRUBS
- EVERGREEN TREE
- SMALL ORNAMENTAL TREE
- SHADE TREE (5' DIA. MULCH SAUCER-TYP. -FOR ALL TREES & SHRUBS)
- PERENNIAL PLANT CARE (PPC)
- PLANT KEY QUANTITY OF SPECIFIED PLANT
- SHRUB CARE
- SHRUBS DENOTED WITH AN • SHALL BE TRIMMED TO 5'
- SELECTIVE CLEARING

**MOWING AREA LAYOUT 5 - 0.83 ACRES**

MODEL: Default  
 FILE: \\nrcs\pub\baronm.dwg  
 PROJECT: \\nrcs\pub\baronm.dwg  
 PLOT DATE: 10/23/2020

USER NAME = eversct	DESIGNED -	REVISED -
	DRAWN -	REVISED -
PLOT SCALE = 78.6960' / in.	CHECKED -	REVISED -
PLOT DATE = 10/23/2020	DATE -	REVISED -

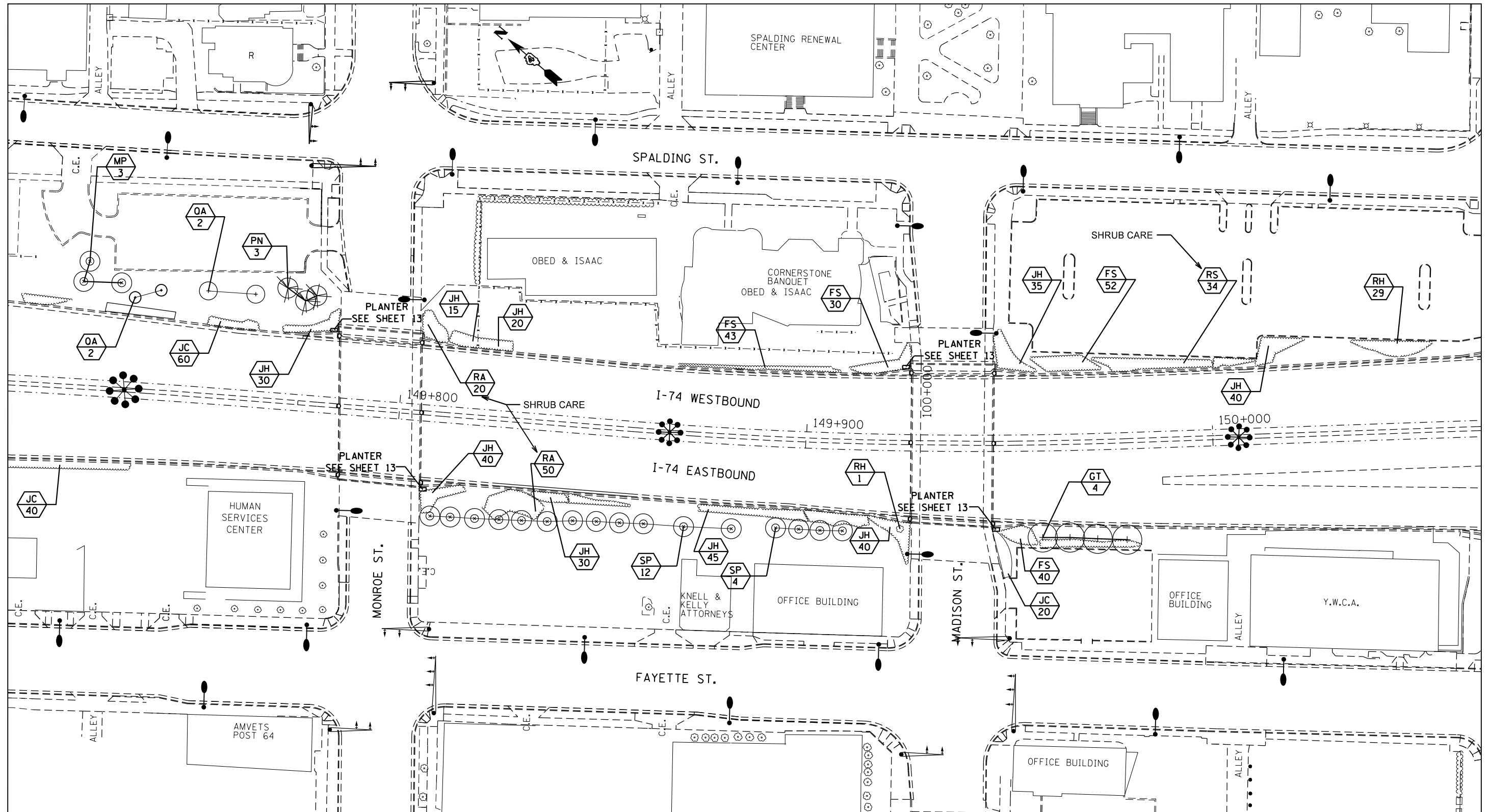
**STATE OF ILLINOIS  
DEPARTMENT OF TRANSPORTATION**

**PLAN SHEET - LAYOUT 5**

SCALE: SHEET OF SHEETS STA. TO STA.

F.A.I. RTE.	SECTION	COUNTY	TOTAL SHEETS	SHEET NO.
74	72-(8L5-11,(9,9-1)LS-12)	PEORIA	13	10
CONTRACT NO. 68F97				

ILLINOIS FED. AID PROJECT



LEGEND

- MOWING
- SHRUBS
- EVERGREEN TREE
- SMALL ORNAMENTAL TREE
- SHADE TREE (5' DIA. MULCH SAUCER-TYP. -FOR ALL TREES & SHRUBS)
- PERENNIAL PLANT CARE (PPC)
- PLANT KEY QUANTITY OF SPECIFIED PLANT
- SHRUB CARE
- SHRUBS DENOTED WITH AN • SHALL BE TRIMMED TO 5'
- SELECTIVE CLEARING

MOWING AREA LAYOUT 6 - 0 ACRES

shrub care for both sides of interstate for plants sticking through fence

MODEL: Default  
 FILE: MOWING\_AREA\_LAYOUT\_6.dwg  
 PROJECT: I-74 Interchange  
 SHEET: 6 of 11  
 DATE: 10/23/2020

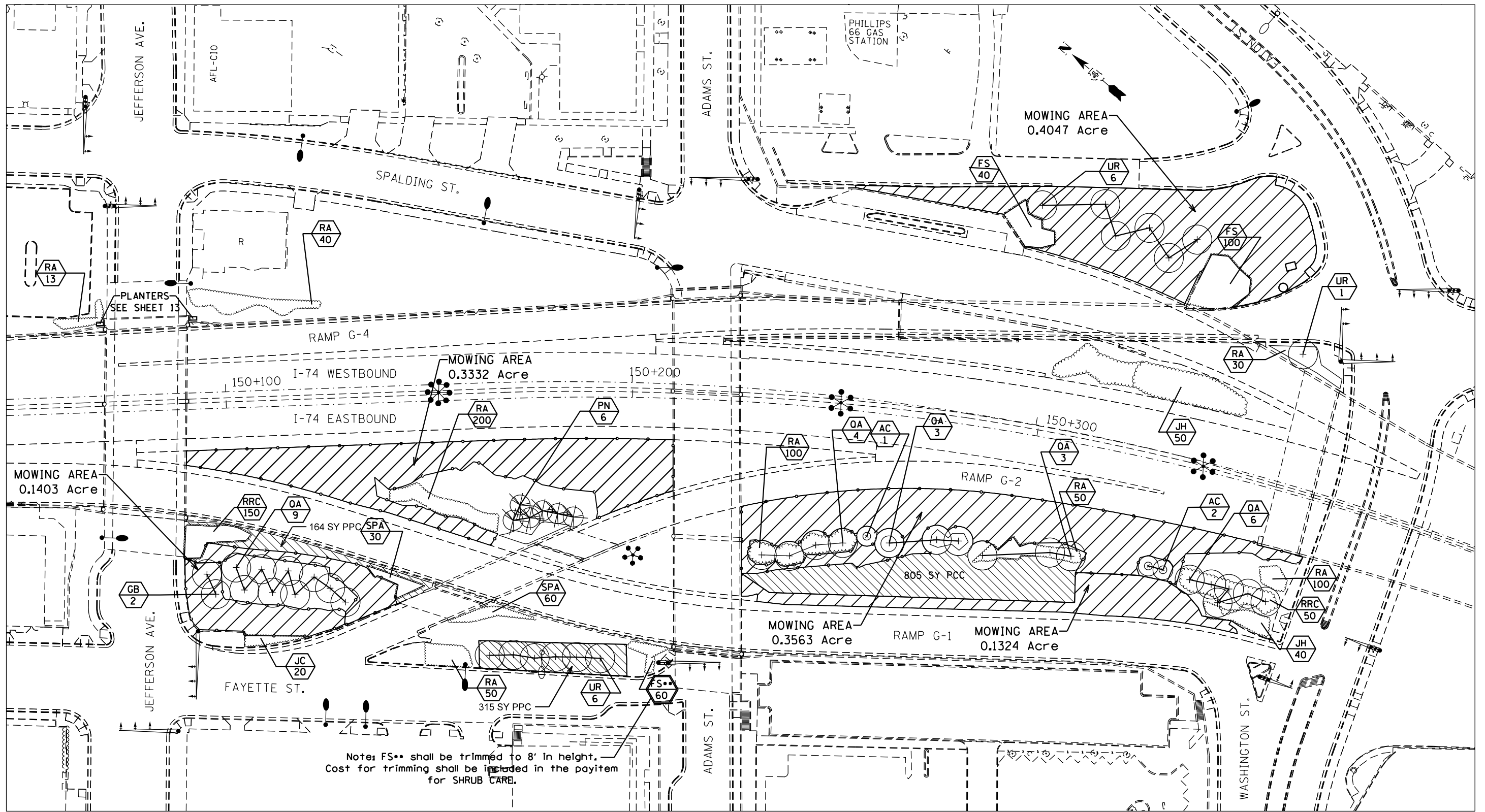
USER NAME = eversct	DESIGNED -	REVISED -
	DRAWN -	REVISED -
PLOT SCALE = 78.6960' / in.	CHECKED -	REVISED -
PLOT DATE = 10/23/2020	DATE -	REVISED -

**STATE OF ILLINOIS  
DEPARTMENT OF TRANSPORTATION**

**PLAN SHEET - LAYOUT 6**

SCALE: SHEET OF SHEETS STA. TO STA.

F.A.I. RTE.	SECTION	COUNTY	TOTAL SHEETS	SHEET NO.
74	72-(8LS-11,(9,9-1)LS-12)	PEORIA	13	11
CONTRACT NO. 68F97				
ILLINOIS FED. AID PROJECT				



Note: FS•• shall be trimmed to 8' in height.  
 Cost for trimming shall be included in the payitem  
 for SHRUB CARE.

LEGEND	
	MOWING
	SHRUBS
	EVERGREEN TREE
	SMALL ORNAMENTAL TREE
	SHADE TREE (5' DIA. MULCH SAUCER-TYP. -FOR ALL TREES & SHRUBS)
	PERENNIAL PLANT CARE (PPC)
	PLANT KEY QUANTITY OF SPECIFIED PLANT
	SHRUB CARE
	SHRUBS DENOTED WITH AN • SHALL BE TRIMMED TO 5'
	SELECTIVE CLEARING

MOWING AREA LAYOUT 7 - 1.53 ACRES

MODEL: Default  
 FILE: \\nrcs-pix\pub\baronm.dwg  
 PROJECT: \\nrcs-pix\pub\baronm.dwg  
 OFFICE: \\nrcs-pix\pub\baronm.dwg  
 DATE: 10/23/2020

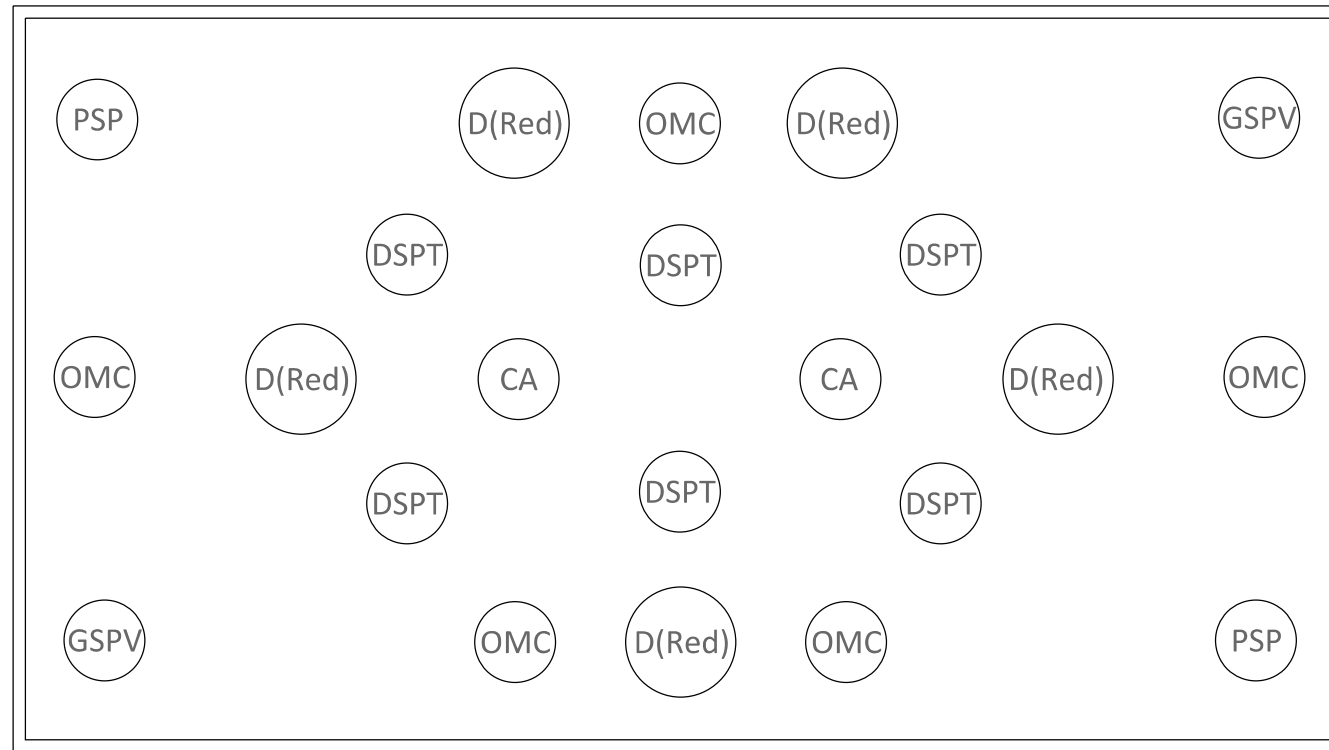
USER NAME = eversct	DESIGNED -	REVISED -
	DRAWN -	REVISED -
PLOT SCALE = 78.6960' / in.	CHECKED -	REVISED -
PLOT DATE = 10/23/2020	DATE -	REVISED -

STATE OF ILLINOIS  
 DEPARTMENT OF TRANSPORTATION





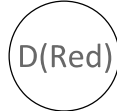
PLAN SHEET - LAYOUT 7

SCALE: SHEET OF SHEETS STA. TO STA.

F.A.I. RTE.	SECTION	COUNTY	TOTAL SHEETS	SHEET NO.
74	72-(8L5-11,(9,9-1)LS-12)	PEORIA	13	12
CONTRACT NO. 68F97				
ILLINOIS FED. AID PROJECT				



**LEGEND**

-  Canna "Australia" (2 Each Planter)
-  Green Sweet Potato Vine (2 Each Planter)
-  Dracaena Spike Purple Tower (6 Each Planter)
-  "Orange Marmalade" Crossandra (5 Each Planter)
-  Purple Sweet Potato Vines (2 Each Planter)
-  Dipladenias (Red) (5 Each Planter)

**PLANTER LOCATIONS:**

- 2 at Perry Avenue**
- 2 at Monroe Street**
- 2 at Madison Street**
- 2 at Jefferson Avenue**

MODEL: Default  
 FILE NAME: p:\vol\room\dat\illinois.gov\p\w\DOT\Documents\DOT\_Offices\District\_4\Projects\ID4\_68f97\CAD\Bases\CAD\Bases\468f97-shc-lansco.dgn

USER NAME = everscl	DESIGNED -	REVISED -
	DRAWN -	REVISED -
PLOT SCALE = 78,6960 ' / in.	CHECKED -	REVISED -
PLOT DATE = 10/23/2020	DATE -	REVISED -

**STATE OF ILLINOIS  
DEPARTMENT OF TRANSPORTATION**

**PLANTER DETAIL**

SCALE: SHEET OF SHEETS STA. TO STA.

F.A.I. RTE.	SECTION	COUNTY	TOTAL SHEETS	SHEET NO.
74	72-[8LS-11,(9,9-1)LS-12]	PEORIA	13	13
			CONTRACT NO. 68F97	
		ILLINOIS FED. AID PROJECT		