

STATE OF ILLINOIS
DEPARTMENT OF TRANSPORTATION

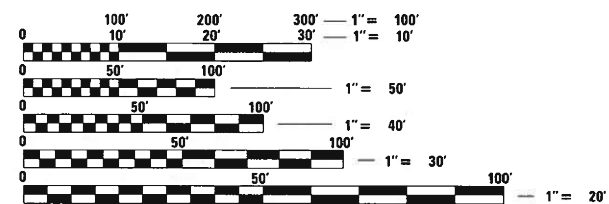
| F.A.U. RTE. | SECTION | COUNTY | TOTAL SHEETS | SHEET NO. |
|-------------|-------------|----------|--------------------|-----------|
| 9105 | 119B-1BDS-3 | MADISON | 15 | 1 |
| | | ILLINOIS | CONTRACT NO. 76K78 | |

FOR INDEX OF SHEETS, SEE SHEET NO. 2

PROPOSED
HIGHWAY PLANS

FAU ROUTE 9105 (SALISBURY ST)
SECTION 119B-1BDS-3
PROJECT NHPP-9VGA(353)
BRIDGE DECK SEALING MCKINLEY BRIDGE
MADISON COUNTY

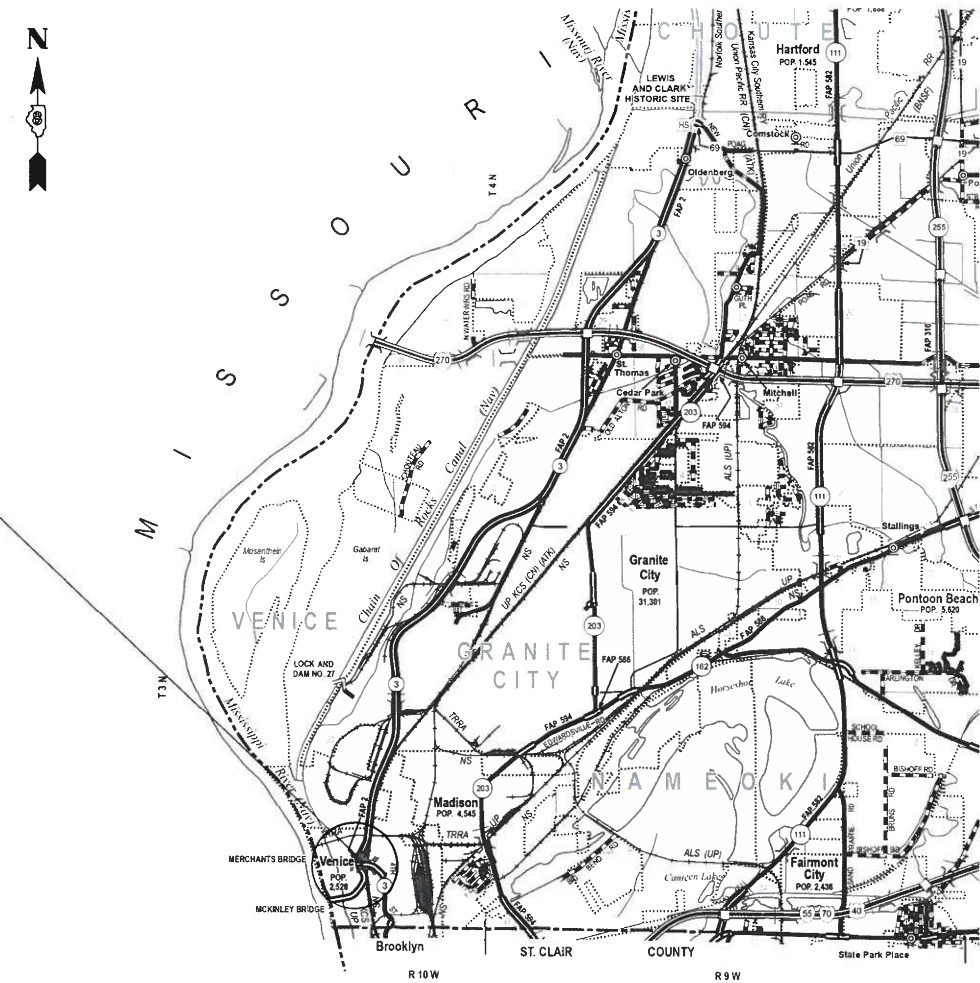
C-98-086-20



FULL SIZE PLANS HAVE BEEN PREPARED USING STANDARD ENGINEERING SCALES. REDUCED SIZED PLANS WILL NOT CONFORM TO STANDARD SCALES. IN MAKING MEASUREMENTS ON REDUCED PLANS, THE ABOVE SCALES MAY BE USED.

J.U.L.I.E.
JOINT UTILITY LOCATION INFORMATION FOR EXCAVATORS
1-800-892-0123
OR 811

PROJECT LOCATION
MCKINLEY BRIDGE
SN 060-6002
STA. 100+00
LATITUDE: 38.66511
LONGITUDE: -90.18257



PROJECT ENGINEER: HERVE GELIN (618) 346-3179
PROJECT MANAGER: BILLIE OWEN (618) 346-3209

GROSS LENGTH = 5,734.25 FT. = 1.086 MILE
NET LENGTH = 5,734.25 FT. = 1.086 MILE

CONTRACT NO. 76K78

STATE OF ILLINOIS
DEPARTMENT OF TRANSPORTATION

SUBMITTED Oct 1 2020
Kath Roberts REGIONAL ENGINEER

December 4, 2020
Scott A. Elk
ENGINEER OF DESIGN AND ENVIRONMENT

December 4, 2020
James J. ...
DIRECTOR OF HIGHWAYS PROJECT IMPLEMENTATION 13

PRINTED BY THE AUTHORITY
OF THE STATE OF ILLINOIS

INDEX OF SHEETS

1. COVER SHEET
2. INDEX OF SHEETS, HIGHWAY STANDARDS, GENERAL NOTES & COMMITMENTS
3. SUMMARY OF QUANTITIES
- 4-9. TYPICAL SECTIONS
10. SCHEDULE OF QUANTITIES
11. EXISTING PLAN AND ELEVATION
- 12-15. TRAFFIC CONTROL DETAILS

HIGHWAY STANDARDS

| | |
|-----------|---|
| 000001-08 | STANDARD SYMBOLS ABBREVIATIONS & PATTERNS |
| 001006 | DECIMAL OF INCH |
| 701901-08 | TRAFFIC CONTROL DEVICES |
| BLR21-9 | TYPICAL APPLICATION OF TRAFFIC CONTROL DEVICES-FOR CONSTRUCTION ON RURAL LOCAL HIGHWAYS |

COMMITMENTS

NONE

GENERAL NOTES

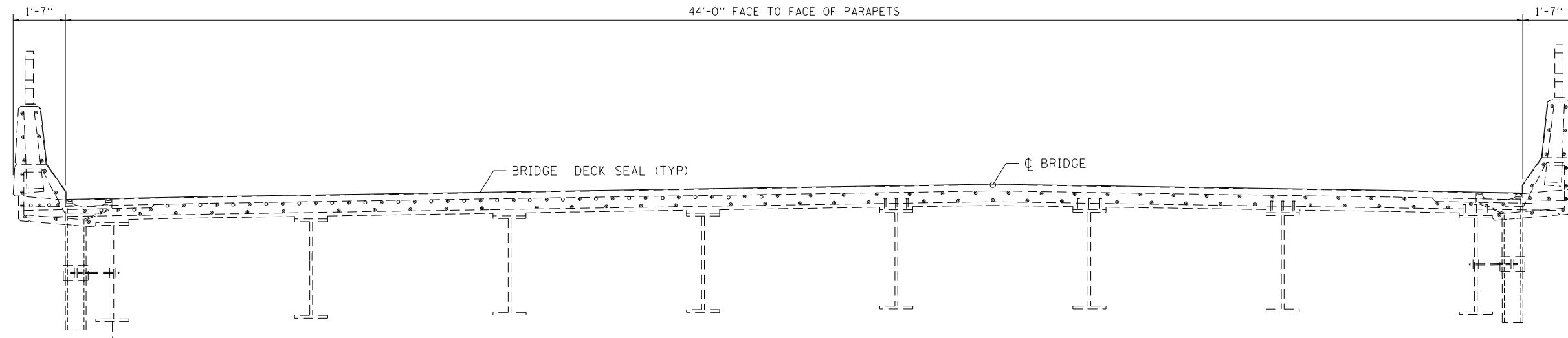
1. ILLINOIS STATE LAW REQUIRES A 48-HOUR NOTICE TO BE GIVEN TO UTILITIES BEFORE DIGGING. FIELD MARKING OF FACILITIES MAY BE OBTAINED BY CONTACTING J.U.L.I.E. (1-800-892-0123 OR 811) OR FOR NON-MEMBERS THE UTILITY COMPANY DIRECTLY.
2. THE CONTRACTOR AND THE ENGINEER SHALL BE AWARE THAT NO SURVEY WAS PERFORMED FOR THIS PROJECT. THE STATIONING, TOPOGRAPHY, AND QUANTITIES SHOWN IN THE PLANS WERE CREATED USING MICROFILM AND FIELD MEASUREMENTS. ALL SHALL BE ASSUMED TO BE APPROXIMATE. THE CONTRACTOR SHALL VERIFY DIMENSIONS AND CONDITIONS IN THE FIELD PRIOR TO CONSTRUCTION AND ORDERING OF MATERIALS.
3. THE DEPARTMENT STRONGLY ENCOURAGES THE PRIME CONTRACTOR AND THEIR APPROVED SUB-CONTRACTORS TO HIRE MINORITY, WOMEN AND DISADVANTAGED INDIVIDUALS FROM ITS FEDERALLY FUNDED HIGHWAY CONSTRUCTION CAREERS TRAINING PROGRAM (HCCTP) TO HELP MEET WORKFORCE AND TRAINEE GOALS. THIS PROGRAM IS TRAINING MINORITIES, WOMEN AND DISADVANTAGED INDIVIDUALS IN HIGHWAY CONSTRUCTION-RELATED SKILLS, E.G., MATH FOR THE TRADES, JOB READINESS, TECHNICAL SKILLS COURSEWORK (CARPENTRY, CONCRETE FLATWORK, BLUEPRINT READING, SITE PLANS, SITE WORK, TOOLS USE, ETC.) AND OSHA 10 HOUR CERTIFICATION, TO PREPARE THEM FOR A CAREER IN THE HIGHWAY CONSTRUCTION TRADES. GRADUATES ARE WELL-TRAINED AND READY TO BECOME PRODUCTIVE ENTRY-LEVEL CONSTRUCTION WORKERS. CONTACT THE DISTRICT 8 EEO OFFICE AT 618-346-3360 AND/OR THE HCCTP COORDINATOR AT 618-874-6528 TO LEARN MORE ABOUT THE PROGRAM AND FOR ASSISTANCE IN MEETING WORKFORCE AND TRAINEE GOALS.
4. 6 CHANGEABLE MESSAGE BOARDS SHALL BE REQUIRED FOR THIS PROJECT. THEY SHALL BE PLACED 2 WEEKS PRIOR TO ANY LANE CLOSURE AND SHALL REMAIN UP FOR THE DURATION OF THE PROJECT. THE CHANGEABLE MESSAGE BOARDS SHALL BE PLACED AT THE DIRECTION OF THE ENGINEER.
5. THE BIKE TRAIL SHALL NOT BE SEALED.
6. THE CANTILEVERED LANES ON THE MAIN SPAN, STA. 92+17.5 TO STA. 107+82.5, SHALL NOT BE SEALED.
7. THE GAP BETWEEN THE IMPACT ATTENUATORS FROM STA. 89+94 TO STA. 90+57 AND FROM STA. 109+47.5 TO STA. 110+12.5 SHALL BE SEALED UP TO THE PAVEMENT JOINT.

STATE OF ILLINOIS
DEPARTMENT OF TRANSPORTATION

INDEX OF SHEETS, HIGHWAY STANDARDS
GENERAL NOTES & COMMITMENTS

| F.A.U RTE. | SECTION | COUNTY | TOTAL SHEETS | SHEET NO. |
|---------------|------------|---------|------------------|--------------|
| 9105 | 119-1BD5-3 | MADISON | 15 | 2 |
| ILLINOIS | | | FED. AID PROJECT | |

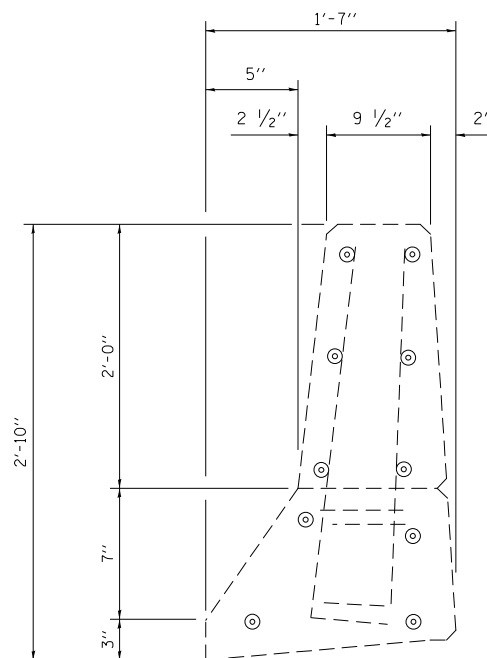
SCALE: SHEET OF SHEETS STA. TO STA.



TYPICAL SECTION

STA. 61+02 TO STA. 62+47.5

(NOT TO SCALE)



TYPICAL PARAPET SECTION

MODEL: Default
 FILE: \\nlsr-pc\pub\lansom.dwg
 PROJECT: \\nlsr-pc\pub\lansom.dwg
 OFFICE: \\nlsr-pc\pub\lansom.dwg
 DATE: 9/29/2020

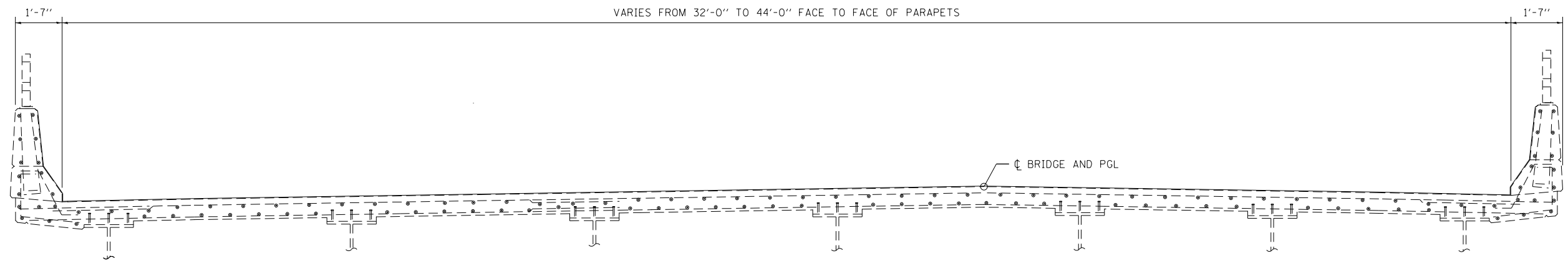
| | | |
|------------------------------|------------|-----------|
| USER NAME = challandeske | DESIGNED - | REVISED - |
| | DRAWN - | REVISED - |
| PLOT SCALE = 100.0000' / in. | CHECKED - | REVISED - |
| PLOT DATE = 9/29/2020 | DATE - | REVISED - |

**STATE OF ILLINOIS
DEPARTMENT OF TRANSPORTATION**

TYPICAL SECTION

SCALE: SHEET 1 OF 6 SHEETS STA. TO STA.

| F.A.U RTE. | SECTION | COUNTY | TOTAL SHEETS | SHEET NO. |
|---------------------------|-------------|---------|-----------------|--------------|
| 9105 | 119B-1BDS-3 | MADISON | 15 | 4 |
| CONTRACT NO. 76K78 | | | | |
| ILLINOIS FED. AID PROJECT | | | | |



TYPICAL SECTION

STA. 62+47.5 TO 63+54.5

(NOT TO SCALE)

MODEL: Default
 FILE: \\nrc\p\uplanroom\dat\illinois.gov\PI\DOT\Documents\DOT_Offices\District 8\Projects\076K78\CADD\DATA\CAD\Sheets\076K78\st-typical.dgn

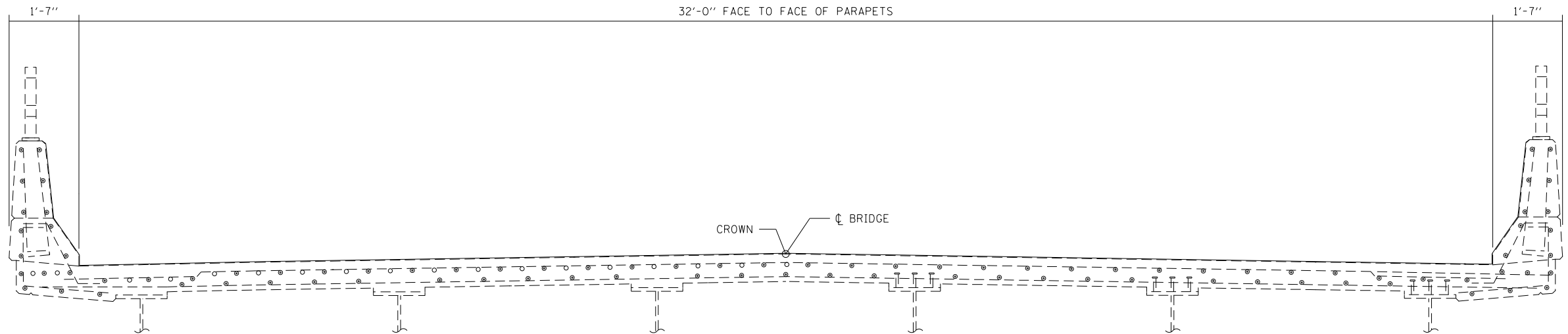
| | | |
|------------------------------|------------|-----------|
| USER NAME = challandeske | DESIGNED - | REVISED - |
| | DRAWN - | REVISED - |
| PLOT SCALE = 100.0000' / in. | CHECKED - | REVISED - |
| PLOT DATE = 9/29/2020 | DATE - | REVISED - |

**STATE OF ILLINOIS
 DEPARTMENT OF TRANSPORTATION**

TYPICAL SECTION

SCALE: SHEET 2 OF 6 SHEETS STA. TO STA.

| F.A.U RTE. | SECTION | COUNTY | TOTAL SHEETS | SHEET NO. |
|---------------------------|-------------|---------|-----------------|--------------|
| 9105 | 119B-1BDS-3 | MADISON | 15 | 5 |
| CONTRACT NO. 76K78 | | | | |
| ILLINOIS FED. AID PROJECT | | | | |



TYPICAL SECTION

STA. 63+54.5 TO 89+67.5

(NOT TO SCALE)

MODEL: Default
 FILE: \\nls1c1.pic.uplanroom.edu\illinois.gov\PIWIDOT\Documents\IDOT_Offices\District 8\Projects\IDOT76K78\CADD\DATA\CAD\Sheet\IDOT76K78-st1-typical.dgn

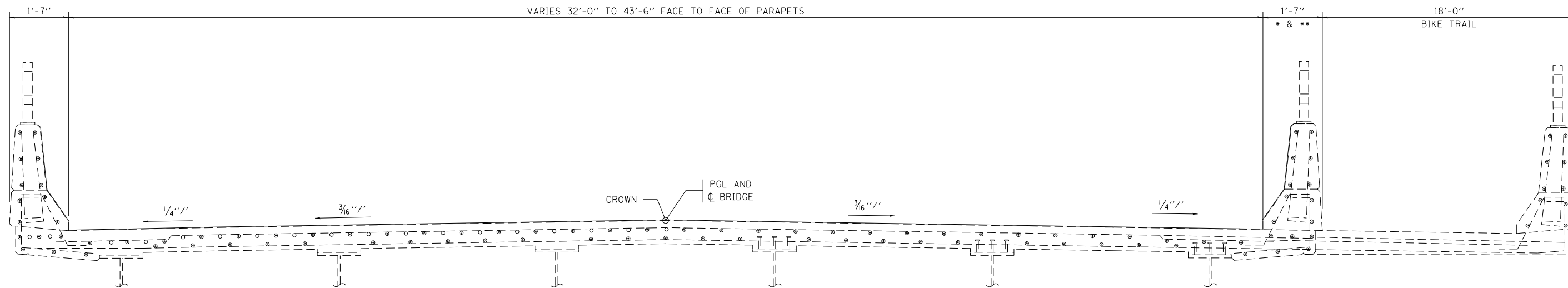
| | | |
|------------------------------|------------|-----------|
| USER NAME = challandeske | DESIGNED - | REVISED - |
| | DRAWN - | REVISED - |
| PLOT SCALE = 100.0000' / in. | CHECKED - | REVISED - |
| PLOT DATE = 9/29/2020 | DATE - | REVISED - |

**STATE OF ILLINOIS
 DEPARTMENT OF TRANSPORTATION**

TYPICAL SECTION

SCALE: SHEET 3 OF 6 SHEETS STA. TO STA.

| F.A.U RTE. | SECTION | COUNTY | TOTAL SHEETS | SHEET NO. |
|---------------------------|-------------|---------|-----------------|--------------|
| 9105 | 119B-1BDS-3 | MADISON | 15 | 6 |
| CONTRACT NO. 76K78 | | | | |
| ILLINOIS FED. AID PROJECT | | | | |



TYPICAL SECTION

STA. 89+67.5 TO STA. 92+17.5*

STA. 107+82.5 TO STA. 110+32.5**

*IMPACT ATTENUATOR FROM STA. 89+77.5 TO STA. 89+94 AND FROM STA. 90+57 TO STA. 90+73.5 AND GAP FROM STA. 89+94 TO STA. 90+57

**IMPACT ATTENUATOR FROM STA. 109+31 TO STA. 109+47.5 AND FROM STA. 110+12.5 TO STA. 110+29 AND GAP FROM STA. 109+47.5 TO STA. 110+12.5

MODEL: Default
FILE: \\nlsr-pc\pub\p\room.d\at\illinois.gov\PIWIDOT\Documents\DOT_Offices\District 8\Projects\107678\CADD\Drawings\107678-119B-1BDS-3-Typical.dgn

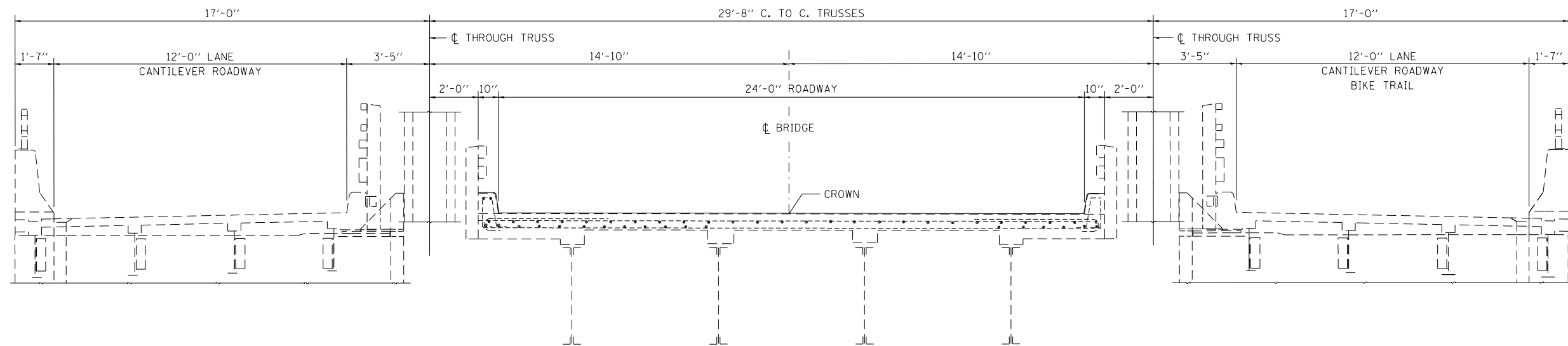
| | | |
|------------------------------|------------|-----------|
| USER NAME = challandeske | DESIGNED - | REVISED - |
| | DRAWN - | REVISED - |
| PLOT SCALE = 100.0000' / in. | CHECKED - | REVISED - |
| PLOT DATE = 9/29/2020 | DATE - | REVISED - |

**STATE OF ILLINOIS
DEPARTMENT OF TRANSPORTATION**

TYPICAL SECTION

SCALE: SHEET 4 OF 6 SHEETS STA. TO STA.

| F.A.U RTE. | SECTION | COUNTY | TOTAL SHEETS | SHEET NO. |
|---------------------------|-------------|---------|--------------|-----------|
| 9105 | 119B-1BDS-3 | MADISON | 15 | 7 |
| CONTRACT NO. 76K78 | | | | |
| ILLINOIS FED. AID PROJECT | | | | |



TYPICAL SECTION

STA. 92+17.5 TO STA. 107+82.5

(NOT TO SCALE)

NOTE: APPLY SEALER TO CURBS

MODEL: Default
 FILE: \\nrcs-pix\uplanroom\data\illinois.gov\PIWIDOT\Documents\IDOT_Offices\District 8\Projects\ID76K78\CADD\Drawings\ID76K78-11-Typical.dgn

| | | |
|------------------------------|------------|-----------|
| USER NAME = challandeske | DESIGNED - | REVISED - |
| | DRAWN - | REVISED - |
| PLOT SCALE = 100.0000' / in. | CHECKED - | REVISED - |
| PLOT DATE = 9/29/2020 | DATE - | REVISED - |

**STATE OF ILLINOIS
DEPARTMENT OF TRANSPORTATION**

TYPICAL SECTION

SCALE: SHEET 5 OF 6 SHEETS STA. TO STA.

| F.A.U RTE. | SECTION | COUNTY | TOTAL SHEETS | SHEET NO. |
|---------------------------|-------------|---------|-----------------|--------------|
| 9105 | 119B-1BDS-3 | MADISON | 15 | 8 |
| CONTRACT NO. 76K78 | | | | |
| ILLINOIS FED. AID PROJECT | | | | |

MODEL: Default
 FILE NAME: p:\p1amroom.dct\illinois.gov\PIWDOT\Documents\DOT_Offices\District_8\Projects\087678\CAD\data\CAD\sheet\087678-sht-sched.e.dgn

| STA | | STA | LENGTH FOOT | AVG WIDTH FOOT | DECK AREA TO BE SEALED SQ FT | PARAPET TO BE SEALED FOOT | TOTAL PARAPET AREA TO BE SEALED SQ FT | GAP TO BE SEALED SQ FT |
|----------------------|----|-----------|----------------|-------------------|---|---------------------------------|---|------------------------------|
| 61+02.00 | TO | 62+47.50 | 145.5 | 44 | 6402 | 3.77 | 1096 | |
| 62+47.50 | TO | 63+54.50 | 107 | 38 | 4066 | 3.77 | 806 | |
| 63+54.50 | TO | 89+67.50 | 2613 | 32 | 83616 | 3.77 | 19685 | |
| 89+67.50 | TO | 92+17.50 | 250 | 37.75 | 9437.5 | 3.77 | 580 | 378 |
| 92+17.50 | TO | 107+82.50 | 1565 | 24 | 37560 | 1.67 | 5217 | |
| 107+82.50 | TO | 110+32.50 | 250 | 37.75 | 9437.5 | 3.77 | 559 | 390 |
| 110+32.50 | TO | 118+36.25 | 803.75 | 32 | 25720 | 3.77 | 6055 | |
| SUBTOTAL (SQ. FT.) = | | | | | 176239 | | 33998 | 768 |
| | | | | | BRIDGE DECK CONCRETE SEALER (SQ. FT.) = | 211,005 | | |

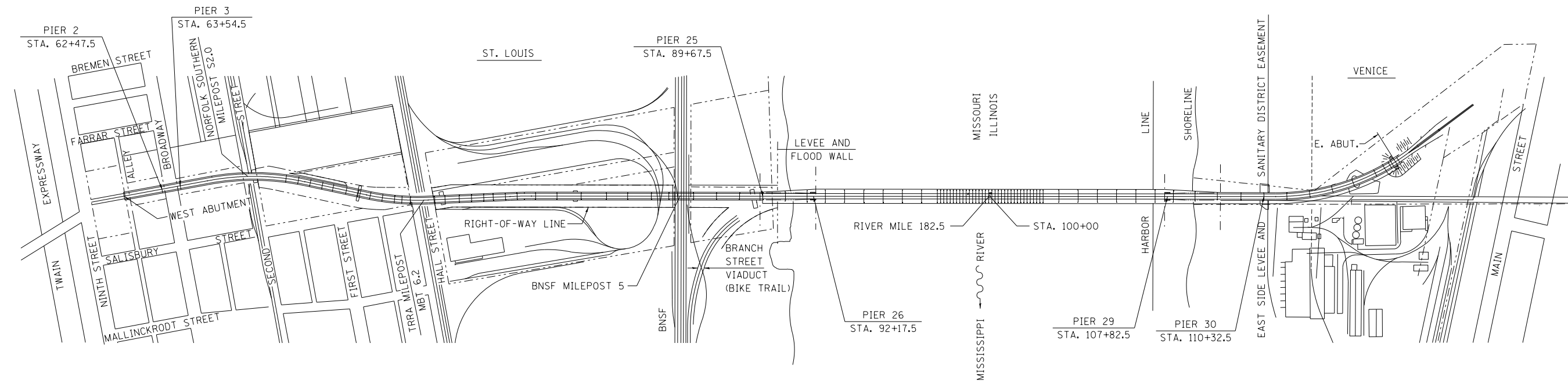
| | | |
|------------------------------|------------|-----------|
| USER NAME = chailandeske | DESIGNED - | REVISED - |
| | DRAWN - | REVISED - |
| PLOT SCALE = 100.0000' / in. | CHECKED - | REVISED + |
| PLOT DATE = 9/29/2020 | DATE - | REVISED + |

**STATE OF ILLINOIS
 DEPARTMENT OF TRANSPORTATION**

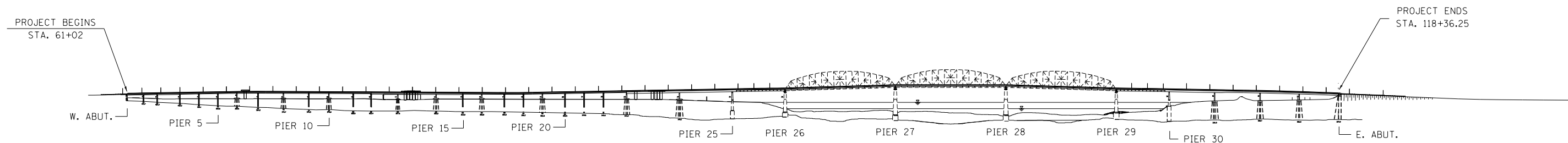
SCHEDULE OF QUANTITIES

SCALE: SHEET OF SHEETS STA. TO STA.

| F.A.U. RTE. | SECTION | COUNTY | TOTAL SHEETS | SHEET NO. |
|---------------------------|-------------|---------|--------------------|--------------|
| 9105 | 119B-1BDS-3 | MADISON | 15 | 10 |
| ILLINOIS FED. AID PROJECT | | | CONTRACT NO. 76K78 | |



EXISTING PLAN



EXISTING ELEVATION

MODEL: Default
 FILE: Model - p1x1p1planroom.dwg
 PROJECT: 119B-1BDS-3
 SHEET: 11
 DATE: 9/29/2020

| | | |
|------------------------------|------------|-----------|
| USER NAME = challeske | DESIGNED - | REVISED - |
| | DRAWN - | REVISED - |
| PLOT SCALE = 100,0000' / in. | CHECKED - | REVISED - |
| PLOT DATE = 9/29/2020 | DATE - | REVISED - |

**STATE OF ILLINOIS
DEPARTMENT OF TRANSPORTATION**

EXISTING PLAN & ELEVATION

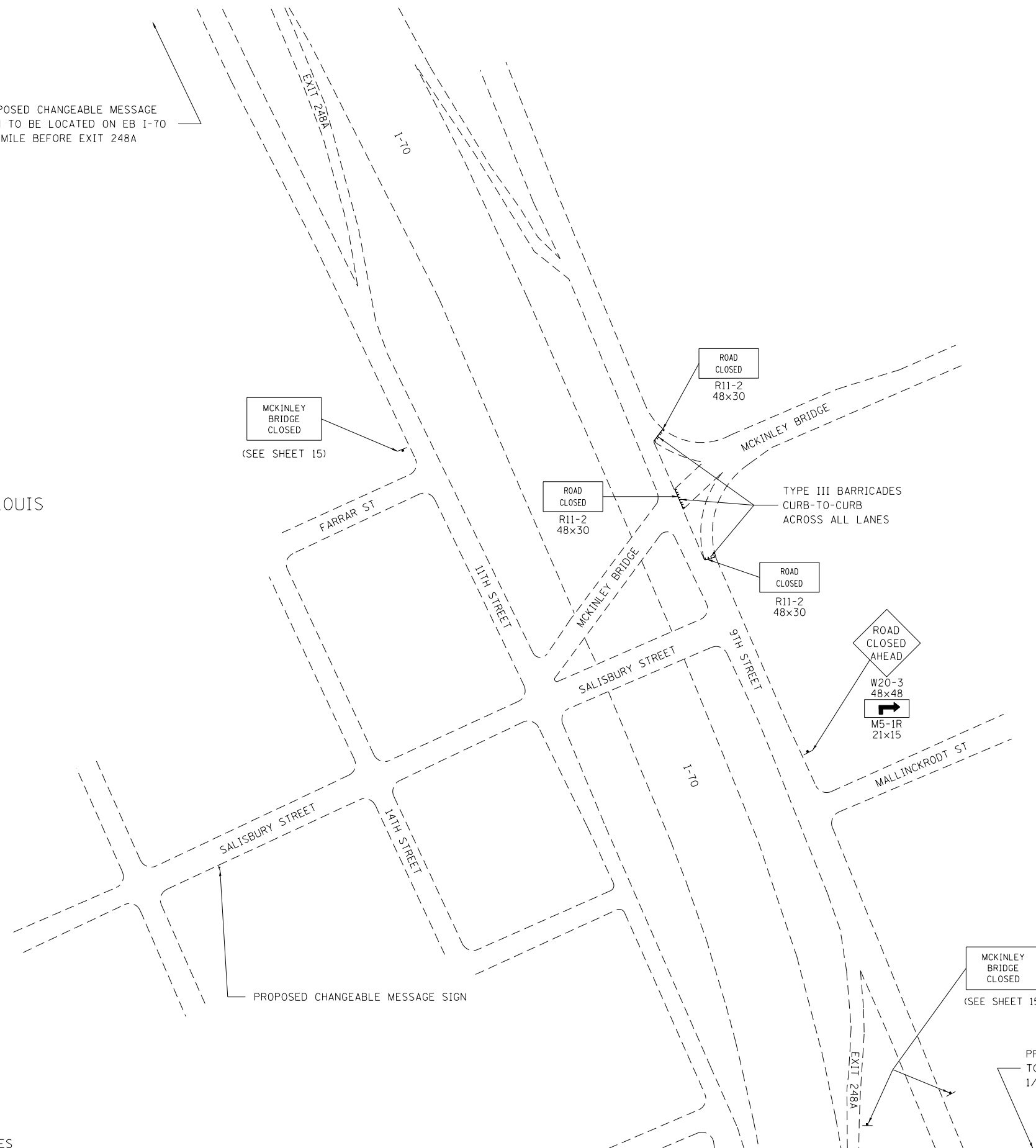
SCALE: SHEET OF SHEETS STA. TO STA.

| F.A.U. RTE. | SECTION | COUNTY | TOTAL SHEETS | SHEET NO. |
|---------------------------|-------------|---------|--------------|-----------|
| 9105 | 119B-1BDS-3 | MADISON | 15 | 11 |
| CONTRACT NO. 76K78 | | | | |
| ILLINOIS FED. AID PROJECT | | | | |

PROPOSED CHANGEABLE MESSAGE SIGN TO BE LOCATED ON EB I-70
1/2 MILE BEFORE EXIT 248A



CITY OF ST. LOUIS



NOTE: ALL SIGN DIMENSIONS IN INCHES

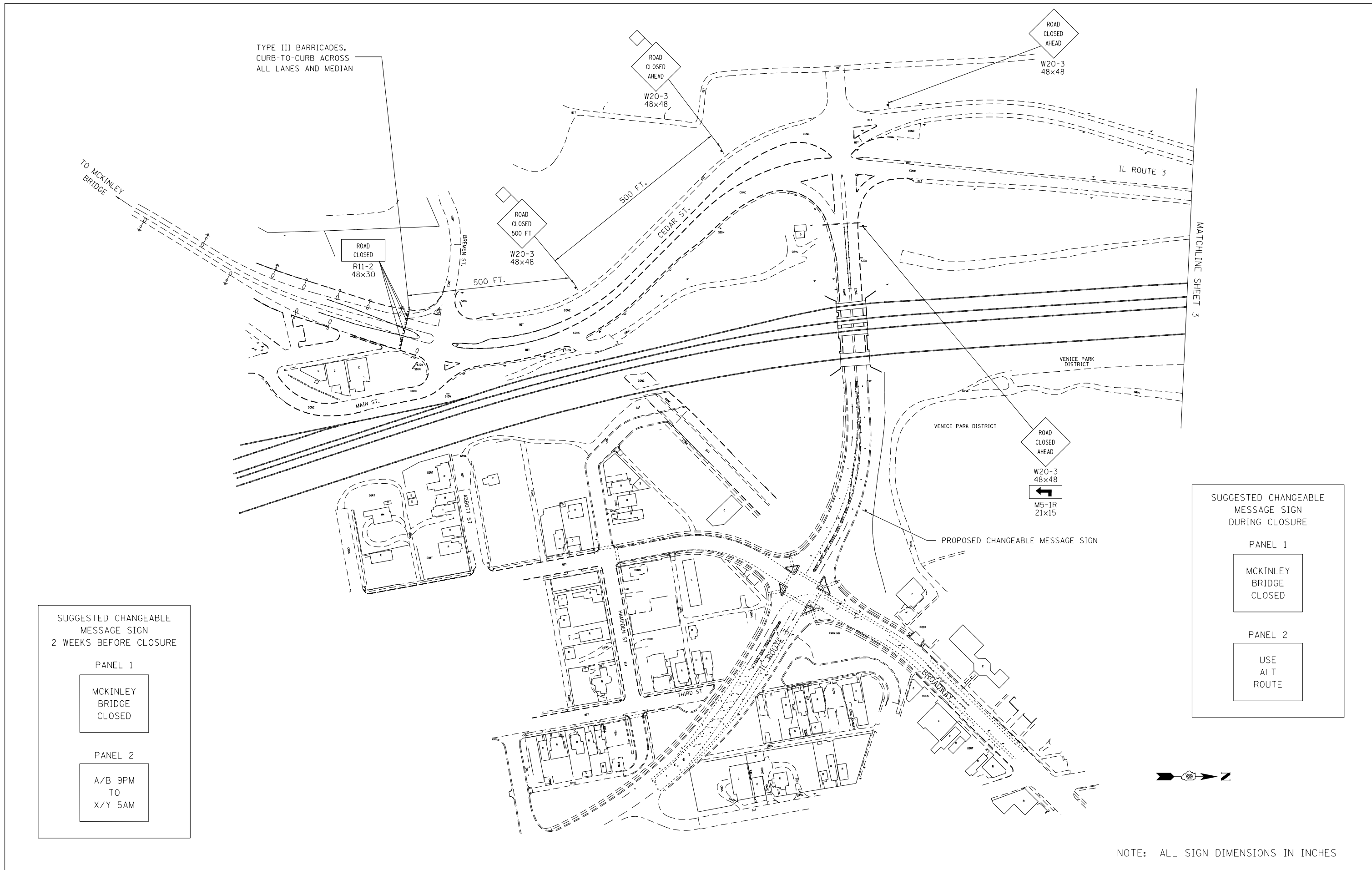
| | | | |
|--|---------------------------------|------------|-----------|
| FILE NAME = | USER NAME = chollandeske | DESIGNED - | REVISED - |
| p:\planroom\dot\illinois.gov\PIDOT\Documents\IDOT Offices\District 8\Projects\D876K78\ADDto\CADsheets\D876K78-sht-plan.dgn | | DRAGON | REVISED - |
| Default | PLOT SCALE = 5000:2.5246' / in. | CHECKED - | REVISED - |
| | PLOT DATE = 9/29/2020 | DATE - | REVISED - |

**STATE OF ILLINOIS
DEPARTMENT OF TRANSPORTATION**

**TRAFFIC CONTROL & PROTECTION
(MISSOURI)**

SCALE: NA SHEET 1 OF 4 SHEETS STA. TO STA.

| F.A.U. RTE. | SECTION | COUNTY | TOTAL SHEETS | SHEET NO. |
|---------------------------|-------------|---------|--------------|--------------------|
| 9105 | 119B-1BD5-3 | MADISON | 15 | 12 |
| | | | | CONTRACT NO. 76K78 |
| ILLINOIS FED. AID PROJECT | | | | |



TYPE III BARRICADES,
CURB-TO-CURB ACROSS
ALL LANES AND MEDIAN

ROAD
CLOSED
AHEAD
W20-3
48x48

ROAD
CLOSED
AHEAD
W20-3
48x48

ROAD
CLOSED
500 FT
W20-3
48x48

ROAD
CLOSED
R11-2
48x30

ROAD
CLOSED
AHEAD
W20-3
48x48
M5-1R
21x15

SUGGESTED CHANGEABLE
MESSAGE SIGN
2 WEEKS BEFORE CLOSURE

PANEL 1

MCKINLEY
BRIDGE
CLOSED

PANEL 2

A/B 9PM
TO
X/Y 5AM

SUGGESTED CHANGEABLE
MESSAGE SIGN
DURING CLOSURE

PANEL 1

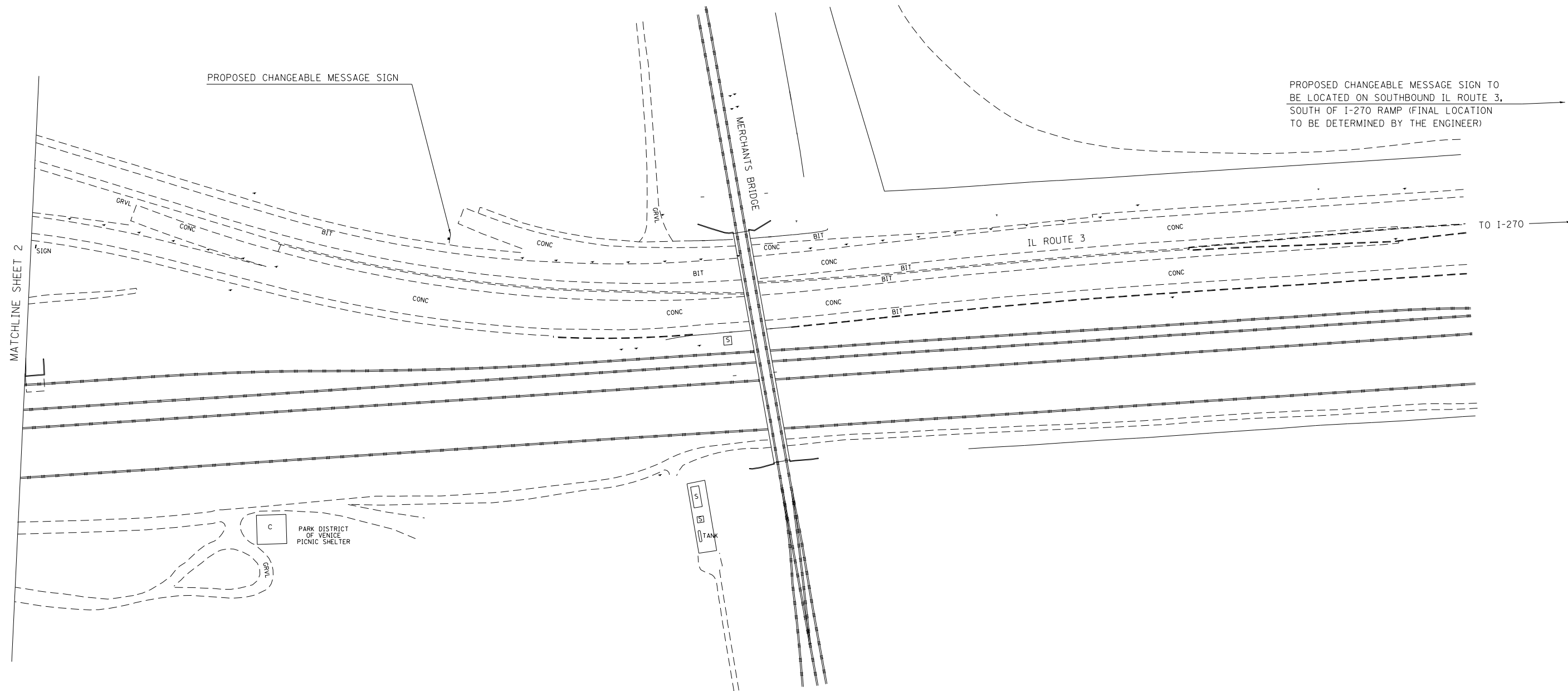
MCKINLEY
BRIDGE
CLOSED

PANEL 2

USE
ALT
ROUTE

NOTE: ALL SIGN DIMENSIONS IN INCHES

| | | | | | | | | | | | |
|---|--------------------------|--------------------------------|-----------|---|--|-------------------------|-------------|---------|-----------------|--------------|---|
| FILE NAME = | USER NAME = chollandeske | DESIGNED - | REVISED - | STATE OF ILLINOIS DEPARTMENT OF TRANSPORTATION | TRAFFIC CONTROL & PROTECTION (ILLINOIS) | F.A.U. RTE. | SECTION | COUNTY | TOTAL SHEETS | SHEET NO. | |
| p:\planroom.dot.illinois.gov\PWIDOT\Documents\IDOT Offices\District 8\Projects\0876K78\BRAND\CABsheets\0876K78-sht-plan.dgn | | REVISIONS | REVISIONS | | | 9105 | 119B-1BDS-3 | MADISON | 15 | 13 | |
| | | PLOT SCALE = 50000.0000' / in. | CHECKED - | | | REVISIONS | | | | | CONTRACT NO. 76K78 |
| | | PLOT DATE = 9/29/2020 | DATE - | | | REVISIONS | | | | | FED. ROAD DIST. NO. ILLINOIS FED. AID PROJECT |
| | | | | | SCALE: NA | SHEET NO. 2 OF 4 SHEETS | | STA. | TO STA. | | |



PROPOSED CHANGEABLE MESSAGE SIGN

PROPOSED CHANGEABLE MESSAGE SIGN TO BE LOCATED ON SOUTHBOUND IL ROUTE 3, SOUTH OF I-270 RAMP (FINAL LOCATION TO BE DETERMINED BY THE ENGINEER)

MATCHLINE SHEET 2

TO I-270

MERCHANTS BRIDGE

IL ROUTE 3

PARK DISTRICT OF VENICE PICNIC SHELTER

TANK

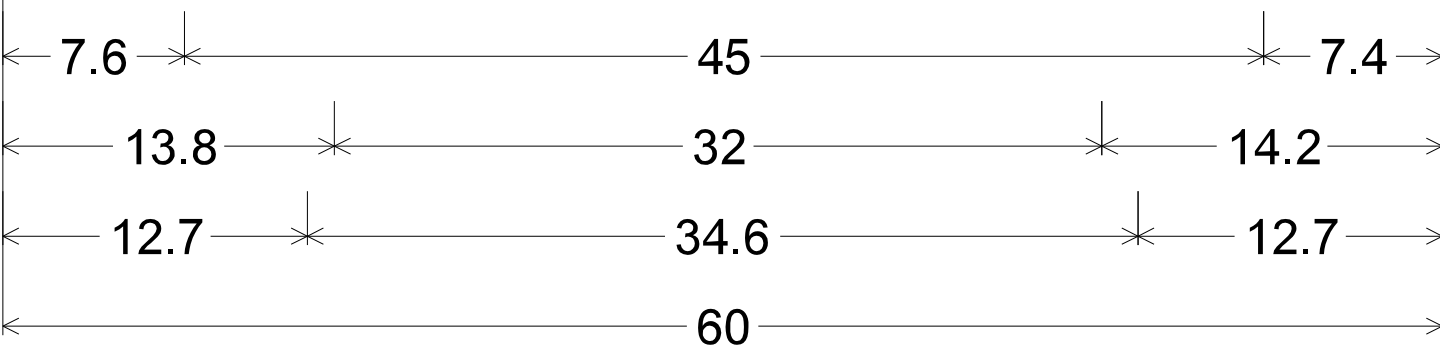
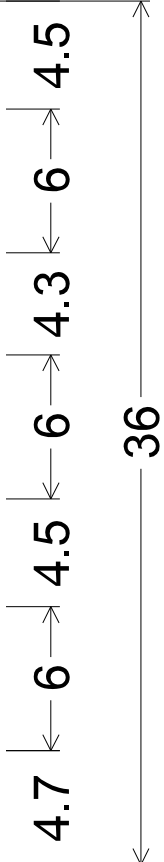
| | | | |
|---|--------------------------------|------------|-----------|
| FILE NAME = | USER NAME = chollandeske | DESIGNED - | REVISED - |
| pw:\planroom.dot.illinois.gov\PIDOT\Documents\IDOT Offices\District 8\Projects\0876K78\BRAND\CABsheets\0876K78-sht-plan.dgn | | CHECKED - | REVISED - |
| | PLOT SCALE = 50000.0000' / in. | DATE - | REVISED - |
| | PLOT DATE = 9/29/2020 | | |

**STATE OF ILLINOIS
DEPARTMENT OF TRANSPORTATION**

**TRAFFIC CONTROL & PROTECTION
(ILLINOIS)**

SCALE: NA SHEET NO. 3 OF 4 SHEETS STA. TO STA.

| F.A.U. RTE. | SECTION | COUNTY | TOTAL SHEETS | SHEET NO. |
|---|-------------|---------|--------------------|-----------|
| 9105 | 119B-1BDS-3 | MADISON | 15 | 14 |
| FED. ROAD DIST. NO. ILLINOIS FED. AID PROJECT | | | CONTRACT NO. 76K78 | |



2.3" Radius, 0.9" Border, 0.6" Indent, Black on Orange;
 [MCKINLEY] E; [BRIDGE] E; [CLOSED] E;