

STATE OF ILLINOIS
DEPARTMENT OF TRANSPORTATION

F.A.P. RTE.	SECTION	COUNTY	TOTAL SHEETS	SHEET NO.
103	(101X,101)PP-1	RANDOLPH	7	1
		ILLINOIS	CONTRACT NO. 76N96	

FOR INDEX OF SHEETS, SEE SHEET NO.

ADT

IL 4 TO TILDEN RD
2019 ADT=3150 (ACTUAL)
2021 ADT=3200 (ESTIMATED)
2041 ADT=3700 (ESTIMATED)
SU=3.2% MU=9.5%

TILDEN RD TO PREST RD
2019 ADT=2550 (ACTUAL)
2021 ADT=2600 (ESTIMATED)
2041 ADT=3000 (ESTIMATED)
SU=5.5% MU=11.7%

PREST RD TO IL 153
2019 ADT=3550 (ACTUAL)
2021 ADT=3600 (ESTIMATED)
2041 ADT=4150 (ESTIMATED)
SU=7.7% MU=7.7%

IL 153 TO FIRST STREET
2019 ADT=5600 (ACTUAL)
2021 ADT=5700 (ESTIMATED)
2041 ADT=6500 (ESTIMATED)
SU=2.5% MU=6.3%

FIRST STREET TO PERRY COUNTY LINE
2019 ADT=3350 (ACTUAL)
2021 ADT=3400 (ESTIMATED)
2041 ADT=3900 (ESTIMATED)
SU=8.2% MU=8.2%

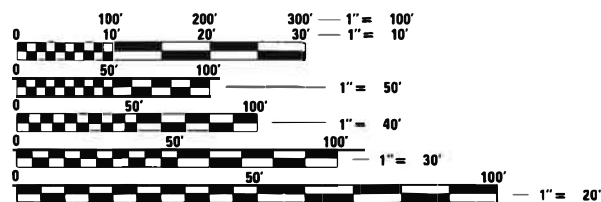
**PROPOSED
HIGHWAY PLANS**

**FAP ROUTE 103 (IL 013/IL 153)
SECTION (101X,101)PP-1
PATCHING
RANDOLPH COUNTY**

C-98-135-20

PROJECT BEGINS
M.P. 0.0
LAT:38.21182
LONG:-89.70319

PROJECT ENDS
M.P. 6.5
LAT:38.18283
LONG:-89.59402

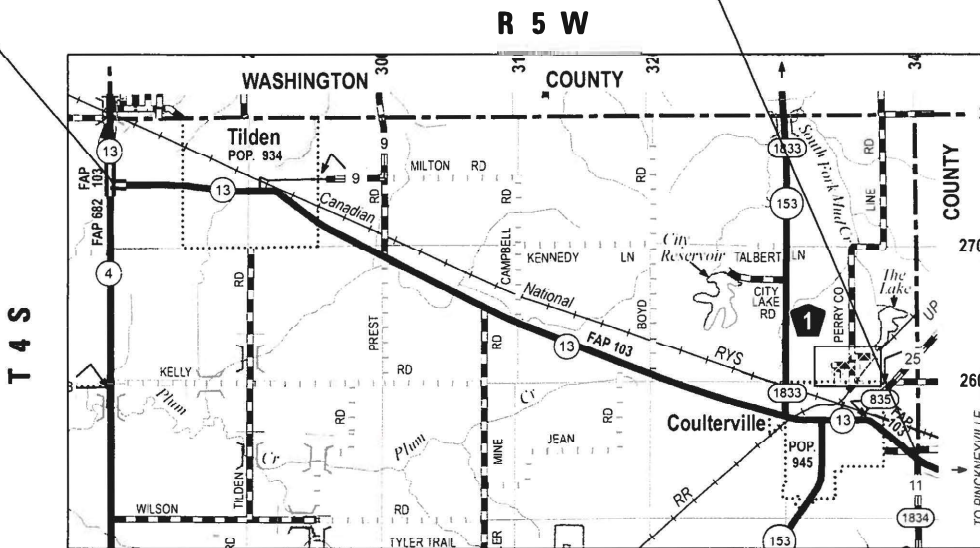


FULL SIZE PLANS HAVE BEEN PREPARED USING STANDARD ENGINEERING SCALES. REDUCED SIZED PLANS WILL NOT CONFORM TO STANDARD SCALES. IN MAKING MEASUREMENTS ON REDUCED PLANS, THE ABOVE SCALES MAY BE USED.

J.U.L.I.E.
JOINT UTILITY LOCATION INFORMATION FOR EXCAVATORS
1-800-892-0123
OR 811

PROJECT ENGINEER: HERVE GELIN (618) 346-3179
SQUAD LEADER: BILLIE OWEN (618) 346-3209

CONTRACT NO. 76N96



NOT TO SCALE

GROSS LENGTH = 34320 FT. = 6.5 MILE

D-98-125-20



LOCATION OF SECTION INDICATED THUS: - [thick line] -

STATE OF ILLINOIS
DEPARTMENT OF TRANSPORTATION

SUBMITTED *Oct 20 20*
Keith Roberts
REGIONAL ENGINEER

December 4, 2020
S. A. Elk
ENGINEER OF DESIGN AND ENVIRONMENT

December 4, 2020
James J. [Signature]
DIRECTOR OF HIGHWAYS PROJECT IMPLEMENTATION

**PRINTED BY THE AUTHORITY
OF THE STATE OF ILLINOIS**

GENERAL NOTES

1. NO SURVEY WAS PERFORMED FOR THIS PROJECT AND THE PLANS WERE CREATED USING MICROFILM AND FIELD MEASUREMENTS.
2. THE PROPOSED PAVEMENT MARKING SHALL MATCH THE LOCATIONS OF THE EXISTING PAVEMENT MARKING, AS DIRECTED BY THE ENGINEER.

INDEX OF SHEETS

1. COVER SHEET
2. INDEX OF SHEETS, HIGHWAY STANDARDS, GENERAL NOTES, AND COMMITMENTS
3. SUMMARY QUANTITIES
- 4.-5. TYPICAL SECTIONS
- 6.-7. SCHEDULES

STANDARDS

000001-08	STANDARD SYMBOLS, ABBREVIATIONS AND PATTERNS
001001-02	AREAS OF REINFORCEMENT BARS
001006	DECIMAL OF AN INCH AND OF A FOOT
442101-09	CLASS B PATCHES
701201-05	LANE CLOSURE, 2L, 2W, DAY ONLY FOR SPEEDS \geq 45 MPH
701301-04	LANE CLOSURE, 2L, 2W, SHORT TIME OPERATIONS
701311-03	LANE CLOSURE 2L, 2W MOVING OPERATIONS- DAY ONLY
701336-07	LANE CLOSURE, 2L, 2W WORK AREAS IN SERIES, FOR SPEEDS \geq 45 MPH
701501-06	URBAN LANE CLOSURE, 2L, 2W, UNDIVIDED
701901-08	TRAFFIC CONTROL DEVICES
780001-05	TYPICAL PAVEMENT MARKINGS

MIXTURE REQUIREMENTS

ROUTE	FAP 103
SECTION	(101X,101)PP-1
COUNTY	MADISON
CONTRACT	76N96

DESCRIPTION	PATCHING – CM ON IL 131L 153 FROM IL 4 TO PERRY CO LINE
--------------------	--

ADT (CONSTRUCTION YR):	5700
MU%	6.3
SU%	2.5
20 YR. ESAL'S:	2.09

MIXTURE USE	PATCHING	
	BINDER	SURFACE
AC/PG	PG 64-22	PG 64-22
RAP % (MAX)	SEE SPECIAL PROVISION	SEE SPECIAL PROVISION
DESIGN AIR VOIDS	4.0% @ Ndes = 70	4.0% @ Ndes = 70
MIX COMPOSITION (GRADATION MIXTURE)	IL 19.0	IL 9.5
FRICTION AGG	MIXTURE "B"	MIXTURE "D"
QUALITY MGMT PROGRAM	QC /QA	QC /QA

COMMITMENTS

NONE

REV. - MS

CODE NO.	ITEM	UNIT	100% STATE		CONSTR. CODE	
			TOTAL QUANTITY	ROADWAY		
				0005	RURAL	
42000060	WELDED WIRE REINFORCEMENT	SQ YD	198	198		
44201007	CLASS B PATCHES, TYPE II, 13 INCH	SQ YD	118	118		
44201011	CLASS B PATCHES, TYPE III, 13 INCH	SQ YD	38	38		
44201013	CLASS B PATCHES, TYPE IV, 13 INCH	SQ YD	160	160		
44201299	DOWEL BARS 1 1/2"	EACH	415	415		
44213200	SAW CUTS	FOOT	980	980		
44213204	TIE BARS 3/4"	EACH	40	40		
67100100	MOBILIZATION	L SUM	1	1		
70100450	TRAFFIC CONTROL AND PROTECTION, STANDARD 701201	L SUM	1	1		
70100600	TRAFFIC CONTROL AND PROTECTION, STANDARD 701336	L SUM	1	1		
70102620	TRAFFIC CONTROL AND PROTECTION, STANDARD 701501	L SUM	1	1		
* 78000200	THERMOPLASTIC PAVEMENT MARKING - LINE 4"	FOOT	4334	4334		

* SPECIALTY ITEM

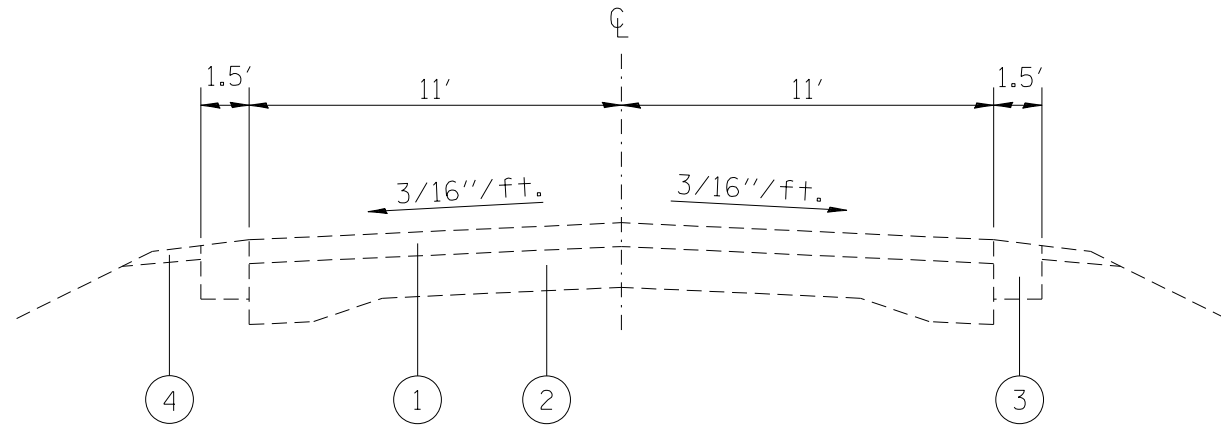
CODE NO.	ITEM	UNIT	100% STATE		CONSTR. CODE	
			TOTAL QUANTITY	ROADWAY		
				0005	RURAL	
* 78001110	PAINT PAVEMENT MARKING - LINE 4"	FOOT	470	470		
X4405040	LONGITUDINAL PARTIAL DEPTH REMOVAL 4"	FOOT	2760	2760		
X4406240	PARTIAL DEPTH REMOVAL, TYPE II, 4"	SQ YD	146	146		
X4406640	PARTIAL DEPTH REMOVAL, TYPE IV, 4"	SQ YD	1151	1151		
X4420900	LONGITUDINAL PARTIAL DEPTH PATCHING	TON	137	137		
Ø Z0076604	TRAINEES TRAINING PROGRAM GRADUATE	HOUR	500	500		
X4421000	PARTIAL DEPTH PATCHING	TON	290	290		

Ø 0042

REV. - MS

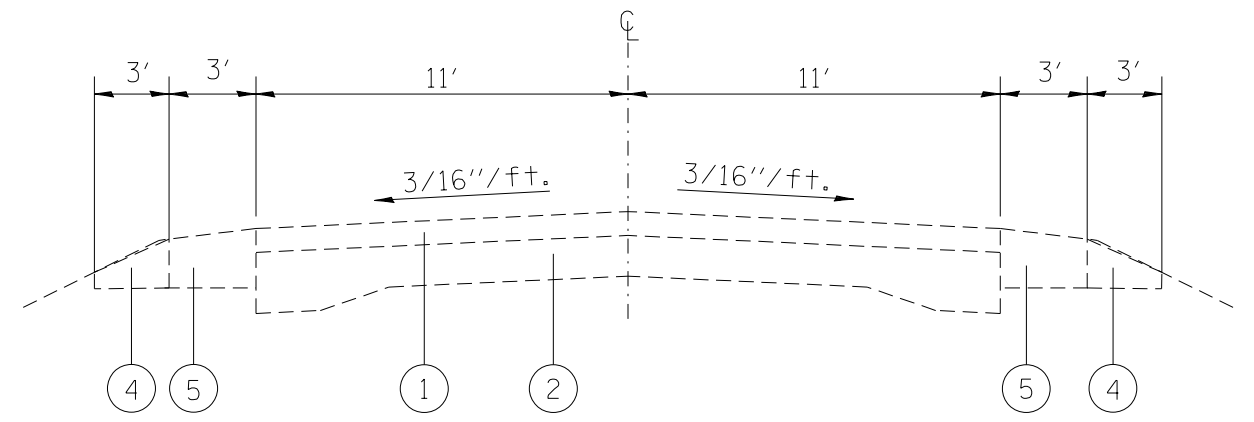
FILE NAME =	USER NAME = lewisko	DESIGNED -	REVISED -	STATE OF ILLINOIS DEPARTMENT OF TRANSPORTATION	SUMMARY QUANTITIES				F.A.P. RTE.	SECTION	COUNTY	TOTAL SHEETS	SHEET NO.
p:\planroom.dot.illinois.gov\PIDOT\Documents\IDOT Offices\District 8\Projects\0876N96\0876N96\CAD\Drawings\0876N96-sh1-500.dgn	DESIGNED -	REVISED -	REVISED -						103	(101X,101)PP-1	RANDOLPH	7	3
Default	PLOT SCALE = 100.0000' / 1in.	CHECKED -	REVISED -		SCALE: SHEET OF SHEETS STA. TO STA.				CONTRACT NO. 76N96				
	PLOT DATE = 10/23/2020	DATE -	REVISED -		ILLINOIS FED. AID PROJECT								

IL 13/IL 153 FROM IL 4 TO PERRY COUNTY LINE



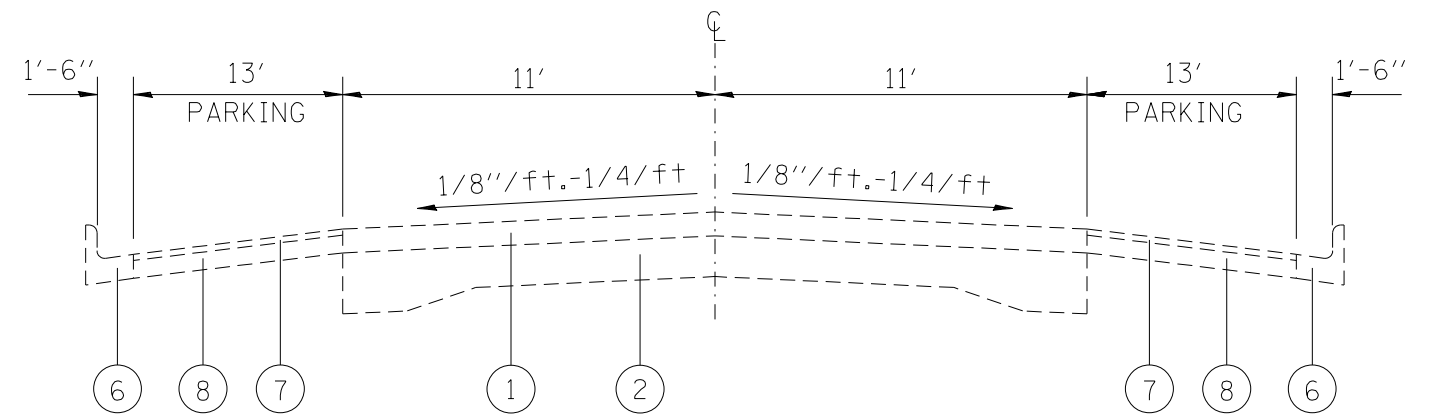
EXISTING TYPICAL SECTION

MILE 0.00 TO MILE 0.81
MILE 5.95 TO MILE 6.50



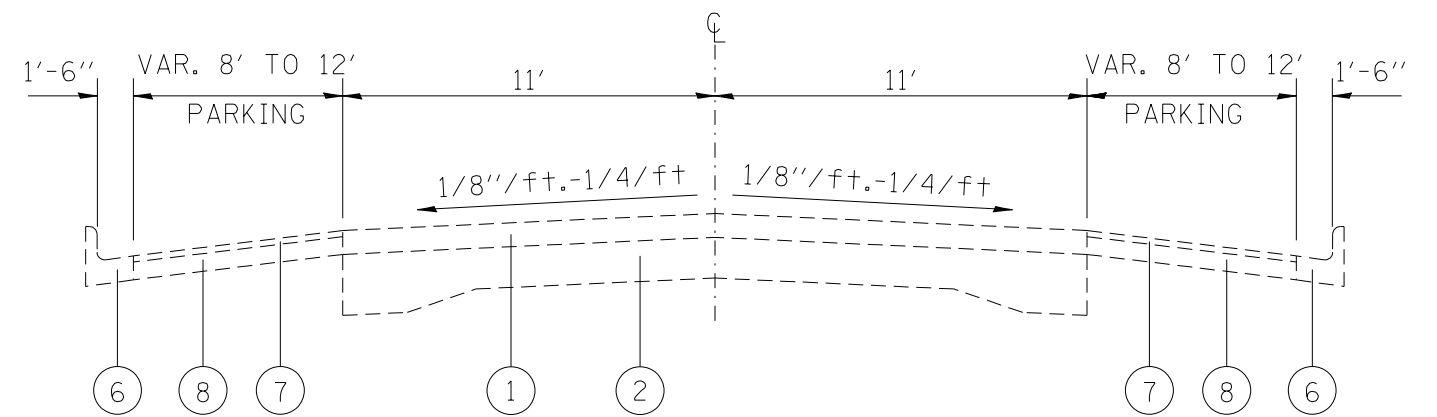
EXISTING TYPICAL SECTION

MILE 1.35 TO MILE 5.26



EXISTING TYPICAL SECTION

MILE 0.81 TO MILE 0.96



EXISTING TYPICAL SECTION

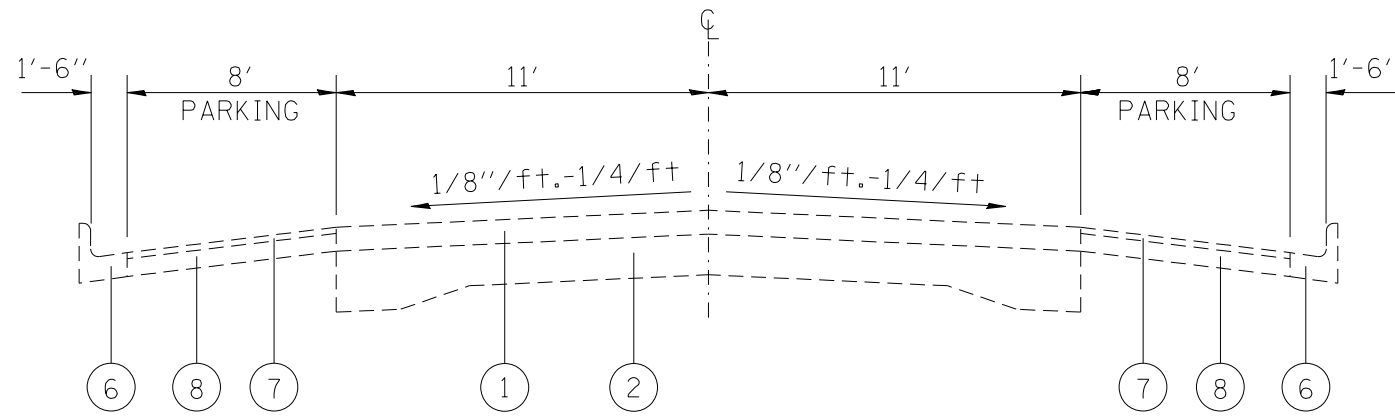
MILE 0.96 TO MILE 1.04

LEGEND

- ① EXISTING HMA OVERLAY (4" MIN.)
- ② EXISTING P.C.C. PAVEMENT (9-6-9)
- ③ EXISTING HOT-MIX ASPHALT SHOULDER
- ④ EXISTING AGGREGATE WEDGE SHOULDERS, TYPE B
- ⑤ EXISTING HOT-MIX ASPHALT SHOULDERS, 8"
- ⑥ EXISTING CONCRETE CURB & GUTTER
- ⑦ EXISTING BITUMINOUS CONCRETE COURSE MIX D, CLASS I, TYPE 2 1/2"
- ⑧ EXISTING BITUMINOUS TREATED GRANULAR BASE 7"

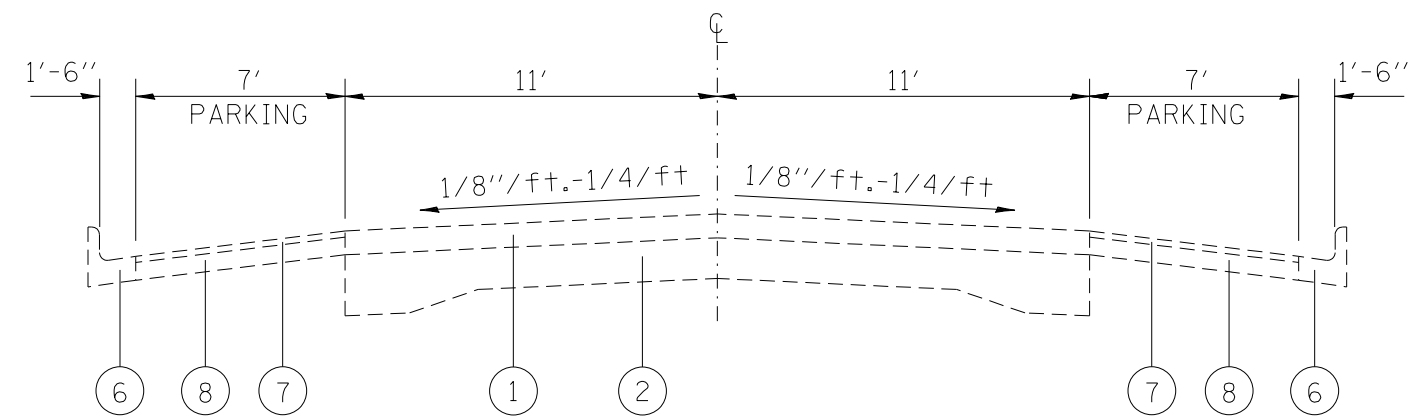
FILE NAME =	USER NAME = lewisko	DESIGNED -	REVISED -	STATE OF ILLINOIS DEPARTMENT OF TRANSPORTATION	EXISTING TYPICAL SECTIONS				F.A.P. RTE.	SECTION	COUNTY	TOTAL SHEETS	SHEET NO.
p:\planroom.dot\illinois.gov\PIDOT\Documents\IDOT Offices\District 8\Projects\0876N96\DRAWING\CAD\Sheets\0876N96-sht-typical.dwg	PROJECT =	CHECKED -	REVISED -		103	(101X,101)PP-1	RANDOLPH	7	4				
Default	PLOT SCALE = 100.3104' / in.	DATE -	REVISED -		SCALE: SHEET OF SHEETS STA. TO STA.				CONTRACT NO. 76N96				
	PLOT DATE = 10/23/2020								ILLINOIS FED. AID PROJECT				

IL 13/IL 153 FROM IL 4 TO PERRY COUNTY LINE



EXISTING TYPICAL SECTION

MILE 1.04 TO MILE 1.35



EXISTING TYPICAL SECTION

MILE 5.26 TO MILE 5.95

LEGEND

- ① EXISTING HMA OVERLAY (4" MIN.)
- ② EXISTING P.C.C. PAVEMENT (9-6-9)
- ③ EXISTING HOT-MIX ASPHALT SHOULDER
- ④ EXISTING AGGREGATE WEDGE SHOULDERS, TYPE B
- ⑤ EXISTING HOT-MIX ASPHALT SHOULDERS, 8"
- ⑥ EXISTING CONCRETE CURB & GUTTER
- ⑦ EXISTING BITUMINOUS CONCRETE COURSE MIX D, CLASS I, TYPE 2 1/2"
- ⑧ EXISTING BITUMINOUS TREATED GRANULAR BASE 7"

FILE NAME =	USER NAME = lewisko	DESIGNED -	REVISED -	STATE OF ILLINOIS DEPARTMENT OF TRANSPORTATION	EXISTING TYPICAL SECTIONS				F.A.P. RTE.	SECTION	COUNTY	TOTAL SHEETS	SHEET NO.
p:\planroom.dot\illinois.gov\PIDOT\Documents\IDOT Offices\District 8\Projects\0876N96\Drawings\CAD\Sheets\0876N96-sht-typical.dgn		CHECKED -	REVISED -		103	(101X,101)PP-1	RANDOLPH	7	5				
Default	PLOT SCALE = 100.3104' / in.	CHECKED -	REVISED -		SCALE: SHEET OF SHEETS STA. TO STA.				CONTRACT NO. 76N96				
	PLOT DATE = 10/23/2020	DATE -	REVISED -						ILLINOIS FED. AID PROJECT				

PARTIAL DEPTH PATCHING SCHEDULE										
LOCATION				PARTIAL DEPTH REMOVAL, 4"		PARTIAL DEPTH PATCHING	LONGITUDINAL PARTIAL DEPTH REMOVAL, 4"	LONGITUDINAL PARTIAL DEPTH PATCHING	THERMOPLASTIC PAVEMENT MARKING - LINE 4"	
DIRECTION	MILE STATION	LENGTH FT	WIDTH FT	TYPE II SQ YD	TYPE IV SQ YD	TON	FOOT	TON	FOOT	
WB/TL	0.1	110	14		171.1	38.3			220	
WB	0.1	100	14		155.6	34.8			200	
WB	0.1	15	24	40.0		9.0			30	
WB	0.1	8	24	21.3		4.8			16	
WB	0.1	6	24	16.0		3.6			12	
WB	0.1	6	24	16.0		3.6			12	
WB	0.7	15	12	20.0		4.5			30	
EB/TL	0.1	65	20		144.4	32.4			130	
EB	0.1	245	14		381.1	85.4			490	
EB	0.1	6	12	8.0		1.8			12	
EB	0.7	80	12		106.7	23.9			160	
EOP/CL		2300	2				2300	114.5	2300	
SUB-TOTAL				121.3	958.9	242.0	2300	114.5	3612	
PROJECTED FAILURES 20%				24.3	191.8	48.4	460	22.9	722.4	
ROUNDED TOTAL				146	1151	290	2760	137	4334	

MODEL: Default
FILE NAME: p:\c\blanrom\dot\illinois\pwr\DOT\Documents\DOT - Offices\District 8\Projects\08\818\96\CAD\Draw\CADsheets\08\818\96-sbschedule.dgn

USER NAME = lewiska	DESIGNED -	REVISED -	STATE OF ILLINOIS DEPARTMENT OF TRANSPORTATION	SCHEDULES				F.A.P. RTE.	SECTION	COUNTY	TOTAL SHEETS	SHEET NO.
PLOT SCALE = 100,3104' / in.	DRAWN -	REVISED -						103	(101X,101)PP-1	RANDOLPH	7	7
PLOT DATE = 10/23/2020	CHECKED -	REVISED -		SCALE: SHEET OF SHEETS STA. TO STA.				CONTRACT NO. 76N96				
DATE -	REVISED -							ILLINOIS FED. AID PROJECT				