

STATE OF ILLINOIS

DEPARTMENT OF TRANSPORTATION

**PLANS FOR PROPOSED
SURFACE TRANSPORTATION PROGRAM
OFF SYSTEM BRIDGE**

**PROJECT GQGZ(590)
SECTION 18-09115-00-BR
RUSSELL ROAD DISTRICT
LAWRENCE COUNTY
T.R. 266 / 1800E ROAD
PROPOSED STRUCTURE NO. 051-3309
C-97-105-21**

ROUTE NO.	SECTION	COUNTY	TOTAL SHEETS	SHEET NO.
T.R. 266	18-09115-00-BR	LAWRENCE	21	1
FED. ROAD DIST. NO.		ILLINOIS CONTRACT NO. 95887		

INDEX OF SHEETS

SHEET NO.	DESCRIPTION
1.	COVER SHEET
2.	SUMMARY OF QUANTITIES AND GENERAL NOTES
3.	TYPICAL CROSS SECTIONS
4.	PLAN AND PROFILE
5.	WETLANDS PLAN
6-12.	BRIDGE PLANS
13.	BORINGS
14-21.	STATION CROSS SECTIONS

HIGHWAY STANDARDS:

280001-07	TEMPORARY EROSION CONTROL SYSTEMS
515001-04	NAME PLATE FOR BRIDGES
701901-08	TRAFFIC CONTROL DEVICES
725001-01	OBJECT AND TERMINAL MARKERS
BLR 21-9	TYPICAL APPLICATION OF TRAFFIC CONTROL DEVICES FOR CONSTRUCTION ON RURAL LOCAL HIGHWAYS

UTILITIES

FRONTIER COMMUNICATIONS
225 E. CHESTNUT STREET
OLNEY, IL 62450

TEXAS GAS TRANSMISSION, LLC
14405 N. TEXAS GAS ROAD
OAKTOWN, IN 47561

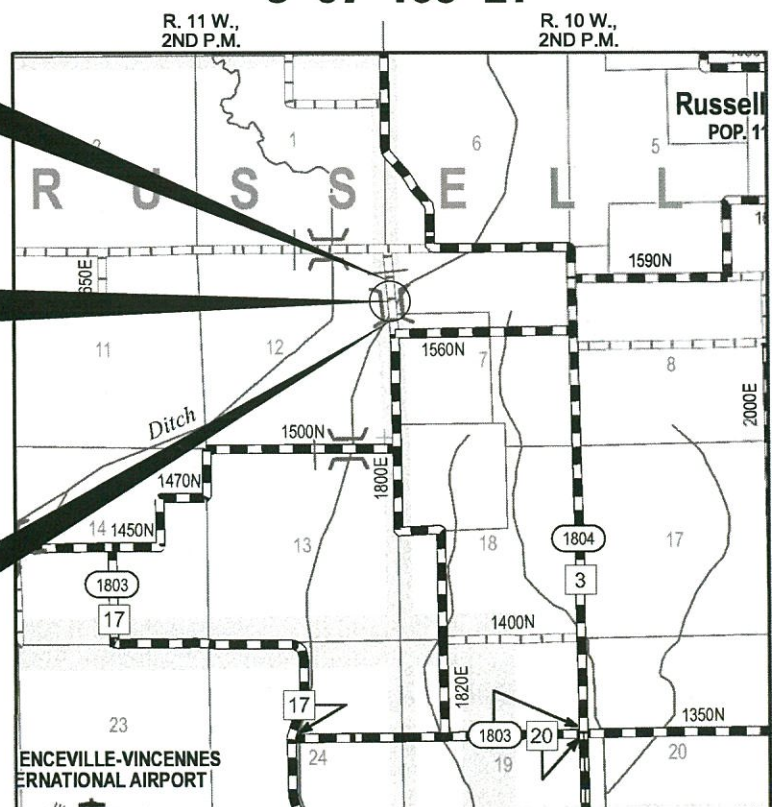
NORRIS ELECTRIC CO-OP
8543 NORTH STATE HIGHWAY 130
NEWTON, IL 62448

O'BRIEN ENERGY COMPANY,
O'BENCO INC.
318-865-8568

STA. 9+97
PRECAST PRESTRESSED CONCRETE DECK BEAM BRIDGE.
SINGLE SPAN @ 82'-0"
28'-0" RDWY.; SKEW = 35°
EXISTING STRUCTURE NO. 051-3115
PROPOSED STRUCTURE NO. 051-3309

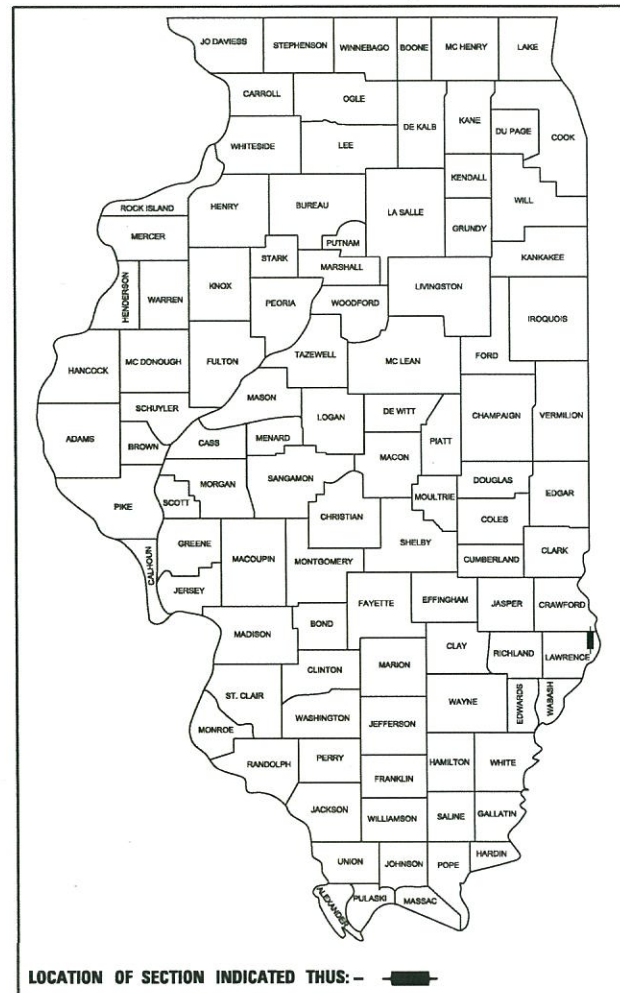
IMPROVEMENT ENDS
STATION 12+00

IMPROVEMENT BEGINS
STATION 8+00

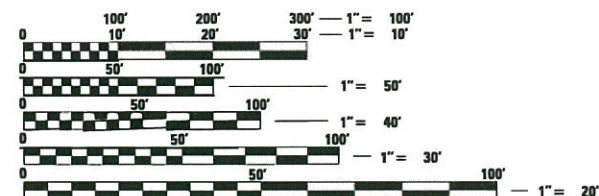


LOCATION MAP

APPROXIMATE SCALE: 0 1/2 MILE
NET LENGTH OF SECTION = 400 FEET = 0.076 MILES



LOCATION OF SECTION INDICATED THUS: -



FULL SIZE PLANS HAVE BEEN PREPARED USING STANDARD ENGINEERING SCALES. REDUCED SIZED PLANS WILL NOT CONFORM TO STANDARD SCALES. IN MAKING MEASUREMENTS ON REDUCED PLANS, THE ABOVE SCALES MAY BE USED.

FUNCTIONAL CLASSIFICATION: LOCAL ROAD
DESIGN SPEED: 20 MPH
DESIGN TRAFFIC: 25 ADT

WARNING

**CALL 811
BEFORE YOU DIG
DIG NO: A2843223**

ILLINOIS DEPARTMENT OF TRANSPORTATION

APPROVED *October 26, 2020*
Adrian Miller
COUNTY ENGINEER

APPROVED *October 20, 2020*
[Signature]
TOWNSHIP COMMISSIONER

PASSED *11-10-20*
Tim Homman
DISTRICT SEVEN ENGINEER OF
LOCAL ROADS & STREETS

Releasing For Bid Based on Limited Review
11-10-20
Jeffrey P. Magnanini
REGION FOUR ENGINEER

STATE OF ILLINOIS
DEPARTMENT OF TRANSPORTATION

DATE: 11/04/2020

HAMPTON, LENZINI AND RENWICK, INC.
CIVIL ENGINEERS - STRUCTURAL ENGINEERS - LAND SURVEYORS
3085 STEVENSON DRIVE, SUITE 201
SPRINGFIELD, ILLINOIS 62703
217.546.3400 www.hirengineering.com

184.000859
ILLINOIS PROFESSIONAL DESIGN FIRM LS / PE / SE CORPORATION

EXPIRES: 11/30/2021 PROJECT NUMBER: 18.0573.130 DATE: 11/04/2020

SUMMARY OF QUANTITIES

CODE NO.	ITEM	CONSTRUCTION TYPE CODE 0010	
		UNIT	TOTAL
20200100	EARTH EXCAVATION	CU YD	105
20300100	CHANNEL EXCAVATION	CU YD	185
20400800	FURNISHED EXCAVATION	CU YD	444
28000400	PERIMETER EROSION BARRIER	FOOT	710
28100807	STONE DUMPED RIPRAP, CLASS A4	TON	300
40200800	AGGREGATE SURFACE COURSE, TYPE B	TON	375
50100100	REMOVAL OF EXISTING STRUCTURES	EACH	1
50300225	CONCRETE STRUCTURES	CU YD	35.4
50400605	PRECAST PRESTRESSED CONCRETE DECK BEAMS (33" DEPTH)	SQ FT	2,296
50800205	REINFORCEMENT BARS, EPOXY COATED	POUND	4,480
50900205	STEEL RAILING, TYPE S1	FOOT	162
51201400	FURNISHING STEEL PILES HP10X42	FOOT	240
51202305	DRIVING PILES	FOOT	240
51204650	PILE SHOES	EACH	12
542D0223	PIPE CULVERTS, CLASS D, TYPE 1 18"	FOOT	110
542D0229	PIPE CULVERTS, CLASS D, TYPE 1 24"	FOOT	36
51500100	NAME PLATES	EACH	1
67100100	MOBILIZATION	L SUM	1
72501000	TERMINAL MARKER - DIRECT APPLIED	EACH	4
X2501000	SEEDING, CLASS 2 (SPECIAL)	ACRE	0.4

^ SEE SPECIAL PROVISIONS

* SPECIALTY ITEMS

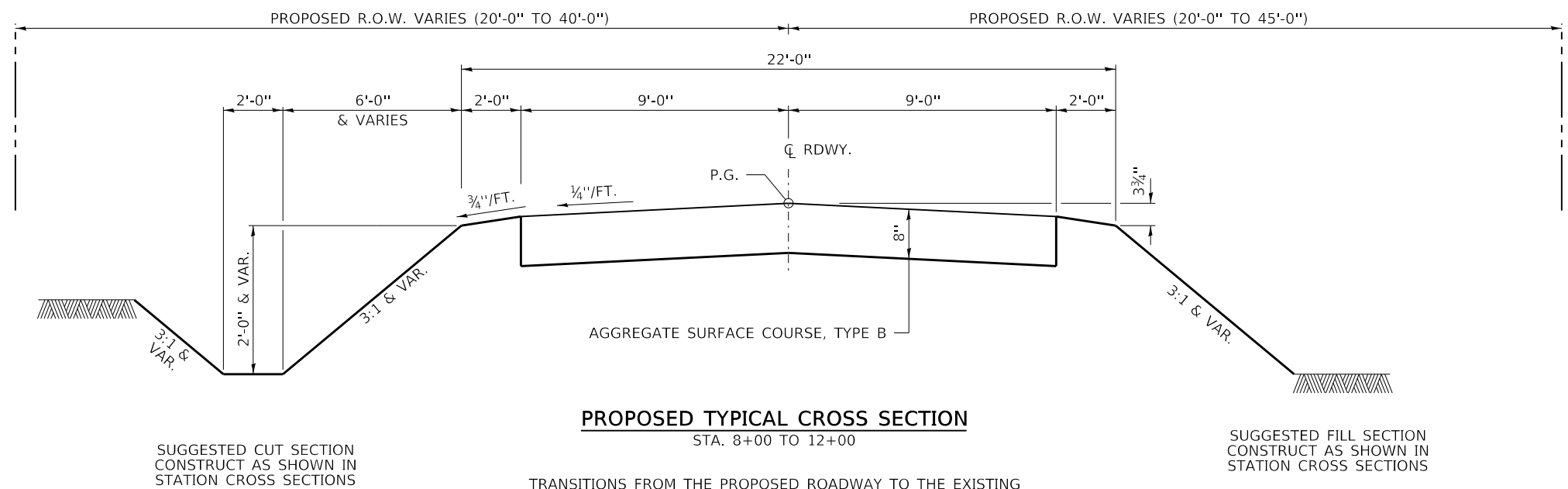
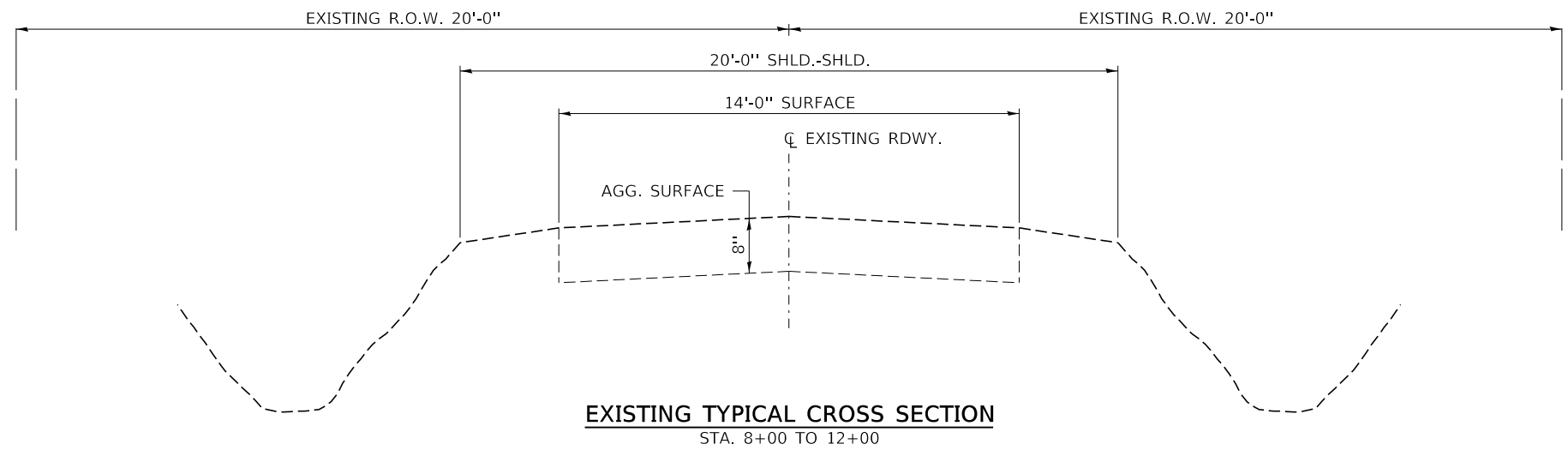
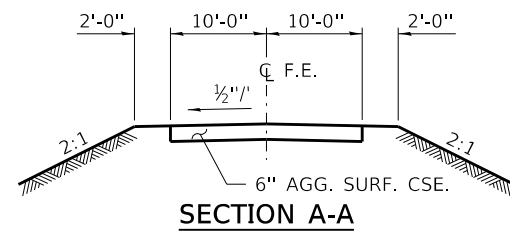
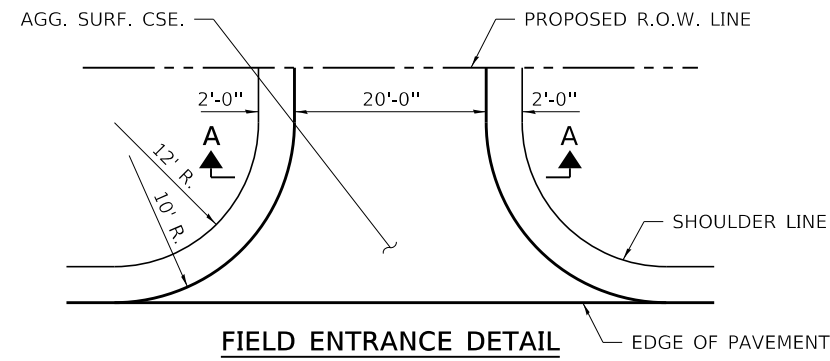
GENERAL NOTES

- 1) ALL CONSTRUCTION SHALL BE DONE IN ACCORDANCE WITH THE STATE OF ILLINOIS "STANDARD SPECIFICATIONS FOR ROAD AND BRIDGE CONSTRUCTION, ADOPTED APRIL 1, 2016", (HERE IN AFTER REFERRED TO AS THE STANDARD SPECIFICATIONS; THE LATEST EDITION OF THE "ILLINOIS MANUAL ON UNIFORM TRAFFIC CONTROL DEVICES FOR STREETS AND HIGHWAYS"; THE DETAILS IN THE PLANS AND THE "SPECIAL PROVISIONS" INCLUDED IN THE DOCUMENTS.
- 2) ALL CLEARING, GRUBBING, FENCE REMOVAL, PAVEMENT REMOVAL, AND REMOVAL OF EXISTING DRAINAGE STRUCTURES SHALL BE INCLUDED IN THE COST OF EARTH EXCAVATION. ALL AGGREGATE AND BITUMINOUS PAVEMENT SHALL BE REMOVED AND PROPERLY DISPOSED OF BY THE CONTRACTOR IN A METHOD APPROVED BY THE ENGINEER. REMOVAL AND DISPOSAL OF PAVEMENT SHALL BE INCLUDED IN THE COST OF EARTH EXCAVATION AND NO ADDITIONAL COMPENSATION WILL BE ALLOWED.
- 3) ANY REFERENCE TO STANDARDS THROUGHOUT THE PLANS OR SPECIAL PROVISIONS SHALL BE INTERPRETED TO BE THE LATEST STANDARD OF THE DEPARTMENT.
- 4) THE FOLLOWING RATES OF APPLICATION HAVE BEEN USED IN CALCULATING PLAN QUANTITIES
 AGGREGATE SURFACE COURSE 2.05 TON/CU YD
 STONE DUMPED RIPRAP 1.75 TON/CU YD
- 5) THE FINAL SURFACE OF ALL EMBANKMENT AREAS SHALL BE SEEDDED. THE TOP 4 INCHES OF THE SEEDDED AREAS SHALL BE TOPSOIL SUBJECT TO THE APPROVAL OF THE ENGINEER. THE COST OF SHAPING THE SLOPES AND PROVIDING TOP SOIL WILL NOT BE PAID FOR SEPARATELY BUT SHALL BE INCLUDED IN THE COST OF EARTH EXCAVATION.
- 6) THE AREA TO BE SEEDDED SHALL CONSIST OF ALL DISTURBED EARTH SURFACES WITHIN THE RIGHT OF WAY OR AS DIRECTED BY THE ENGINEER.
 SEEDING, CLASS 2 (SPECIAL) = 0.40 ACRES
- 7) ALL WASTE MATERIAL FROM EXCAVATIONS SHALL BE DISPOSED OF BY THE CONTRACTOR. NO ADDITIONAL COMPENSATION WILL BE ALLOWED.
- 8) THE CONTRACTOR SHALL CONSULT THE ENGINEER IN REGARD TO THE EXACT LENGTH OF PIPE CULVERTS AND PIPE DRAINS BEFORE ORDERING THESE ITEMS.
- 9) COMMITMENTS:
 1) TREES SHALL NOT BE CLEARED BETWEEN APRIL 1 AND SEPTEMBER 30.

EARTHWORK SCHEDULE

LOCATION	EARTH EXCAVATION	CHANNEL EXCAVATION	SHRINKAGE FACTOR	PERCENT USED	EXCAVATION ADJUSTED FOR SHRINKAGE	EMBANKMENT REQUIRED	EARTHWORK BALANCE
	CU.YD.	CU.YD.			CU.YD.	CU.YD.	CU.YD.
T.R. 266 / 1800E							
STA. 8+00.00 TO STA. 9+55.19	66		25.00%	100.00%	49	234	-185
STA. 9+55.19 TO STA. 10+38.81		185	25.00%	70.00%	97		97
STA. 10+38.81 TO STA. 12+00.00	40		25.00%	100.00%	30	281	-251
ENTRANCES						105	-105
TOTAL	105	185			176	620	-444
USE	105	185					444

FURNISHED 444 CU YDS

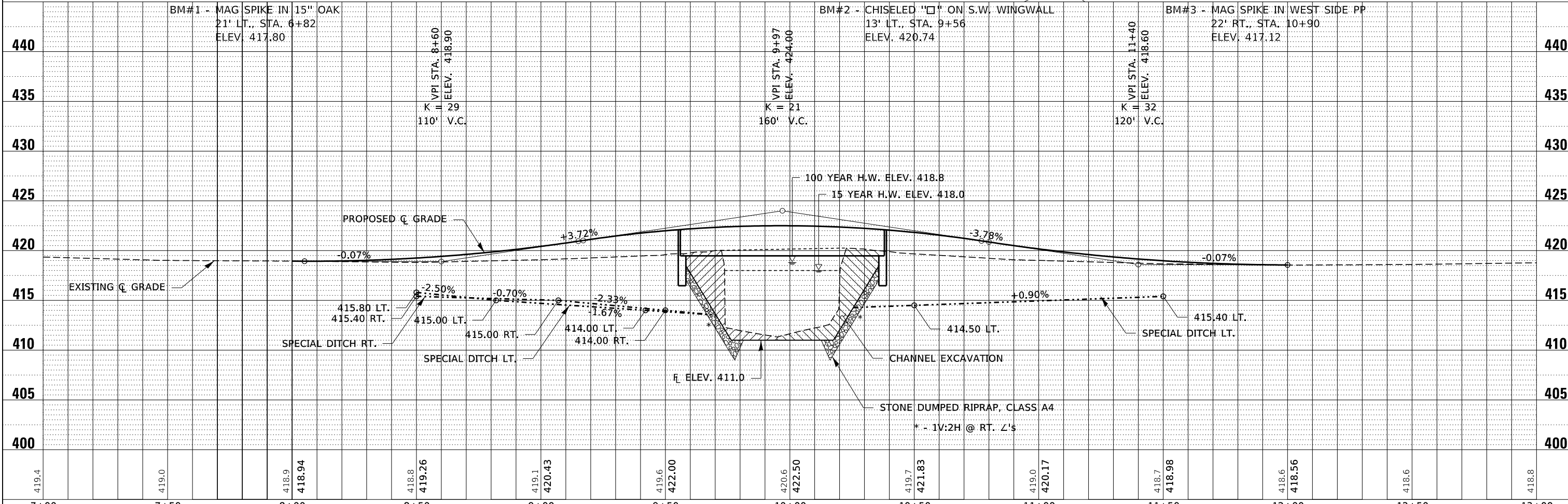
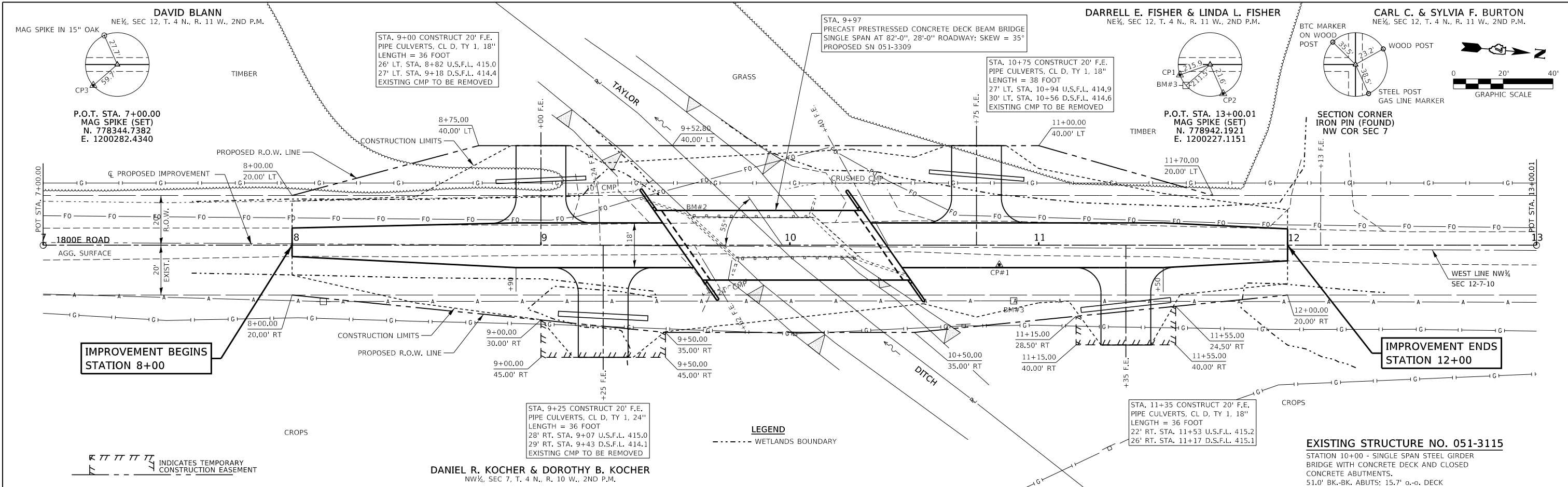


TRANSITIONS FROM THE PROPOSED ROADWAY TO THE EXISTING ROADWAY ARE TO BE CONSTRUCTED FROM STA. 8+00 TO 8+90 AND STA. 11+50 TO STA. 12+00. SEE SHEET 6 FOR TRANSITION AT BRIDGE.

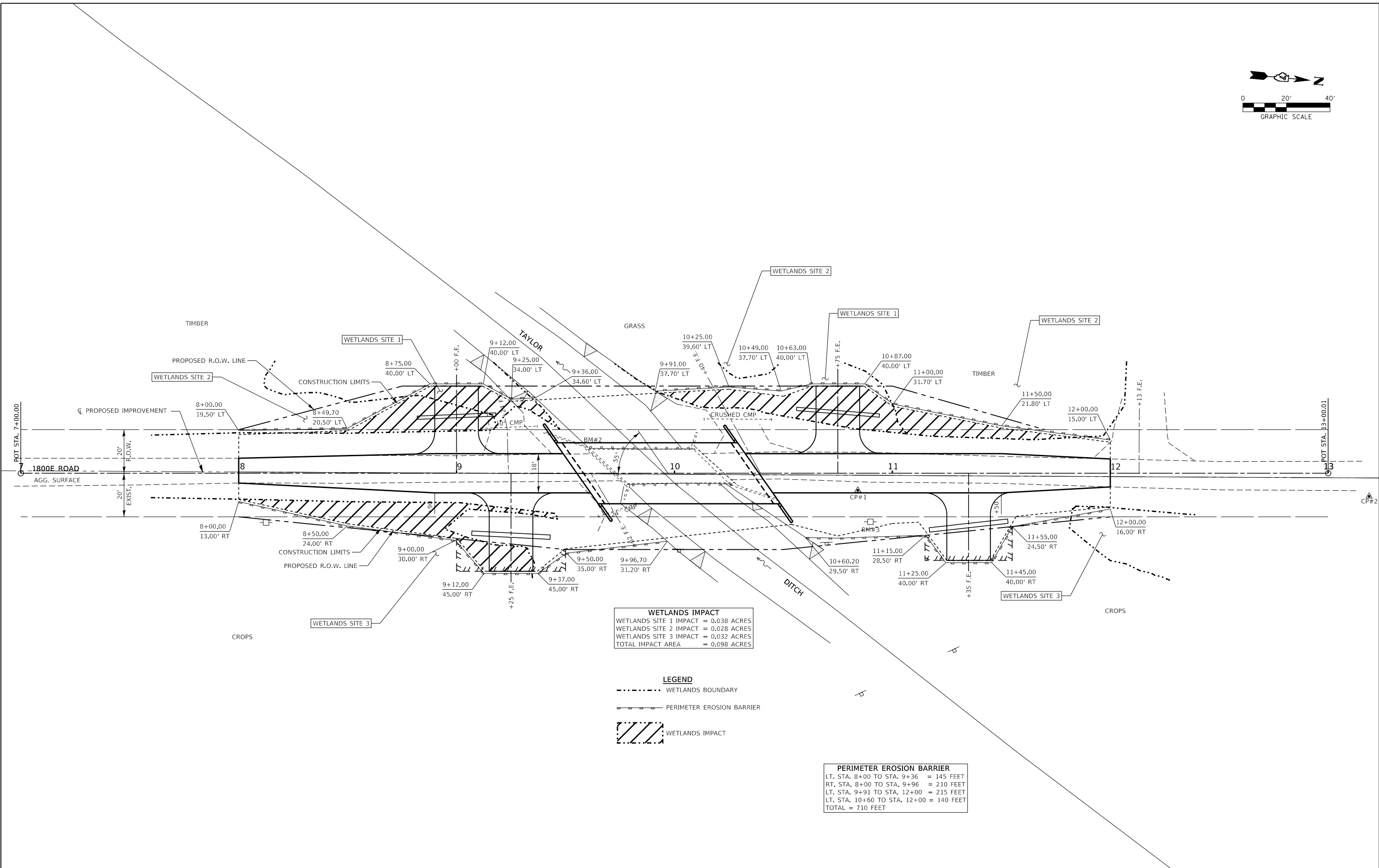
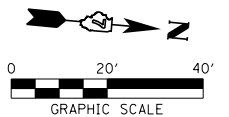
FILE NAME = 180573-shit4ypsec@ons.dgn	USER NAME = rmosick	DESIGNED - J.W.F.	REVISED -	STATE OF ILLINOIS LAWRENCE COUNTY HIGHWAY DEPARTMENT	TYPICAL CROSS SECTIONS			T.R.	SECTION	COUNTY	TOTAL SHEETS	SHEET NO.
HAMPTON, LENZINI AND RENWICK, INC. 3085 STEVENSON DRIVE, SUITE 201 SPRINGFIELD, ILLINOIS 62703 ILLINOIS PROFESSIONAL DESIGN FIRM LS / PE / SE CORP. 184.000959	PLOT SCALE = \$SCALE\$	DRAWN - M.M.P.	REVISED -		RUSSELL ROAD DISTRICT	18-09115-00-BR	LAWRENCE	21	3			
PLOT DATE = 11/14/2020	DATE = 11/04/2020	CHECKED - S.W.M.	REVISED -		CONTRACT NO. 95887			ILLINOIS FED. AID PROJECT GOGZ(590)				
		DATE = 11/04/2020	REVISED -		SCALE:	SHEET NO. 1 OF 1 SHEETS	STA.	TO STA.				

DATE	
BY	
PLAN	
REVIEWED	
PLOTTED	
ALIGNMENT CHECKED	
GRADE CHECKED	
STRUCTURE NOTATING CHECKED	
NOTE BOOK NO.	
FILE NAME	

DATE	
BY	
PROFILE	
REVIEWED	
PLOTTED	
GRADES CHECKED	
STRUCTURE NOTATING CHECKED	
NOTE BOOK NO.	
FILE NAME	



FILE NAME = 180573-shl-plnprf.dgn	USER NAME = rmosick	DESIGNED - J.W.F.	REVISED -	STATE OF ILLINOIS LAWRENCE COUNTY HIGHWAY DEPARTMENT	PLAN & PROFILE SCALE: 20H:5V SHEET NO. 1 OF 1 SHEETS STA. 7+00 TO STA. 13+00	T.R.	SECTION	COUNTY	TOTAL SHEETS	
HAMPTON, LENZINI AND RENWICK, INC. 3085 STEVENSON DRIVE, SUITE 201 SPRINGFIELD, ILLINOIS 62703 ILLINOIS PROFESSIONAL DESIGN FIRM L.S. / P.E. / S.E. CORP. 184.000959		DRAWN - T.W.K.	REVISED -			266	18-09115-00-BR	LAWRENCE	21	4
PLOT SCALE = \$\$\$CALE5		CHECKED - S.W.M.	REVISED -			RUSSELL ROAD DISTRICT		CONTRACT NO. 95887		
PLOT DATE = 11/04/2020		DATE = 11/04/2020	REVISED -			ILLINOIS		FED. AID PROJECT G0G2(590)		



WETLANDS IMPACT
 WETLANDS SITE 1 IMPACT = 0.038 ACRES
 WETLANDS SITE 2 IMPACT = 0.028 ACRES
 WETLANDS SITE 3 IMPACT = 0.032 ACRES
 TOTAL IMPACT AREA = 0.098 ACRES

LEGEND
 - - - - - WETLANDS BOUNDARY
 ——— PERIMETER EROSION BARRIER
 [Hatched Box] WETLANDS IMPACT

PERIMETER EROSION BARRIER
 LT. STA. 8+00 TO STA. 9+36 = 145 FEET
 RT. STA. 8+00 TO STA. 9+96 = 210 FEET
 LT. STA. 9+91 TO STA. 12+00 = 215 FEET
 LT. STA. 10+60 TO STA. 12+00 = 140 FEET
 TOTAL = 710 FEET

FILE NAME = 180573-shr-wetlands-exhibit.dgn
 USER NAME = rmosick
HAMPTON, LENZINI AND RENWICK, INC.
 3066 STEVENSON DRIVE, SUITE 201
 SPRINGFIELD, ILLINOIS 62703
 ILLINOIS PROFESSIONAL DESIGN FIRM
 LS / PE / SE CORP. 184.000959

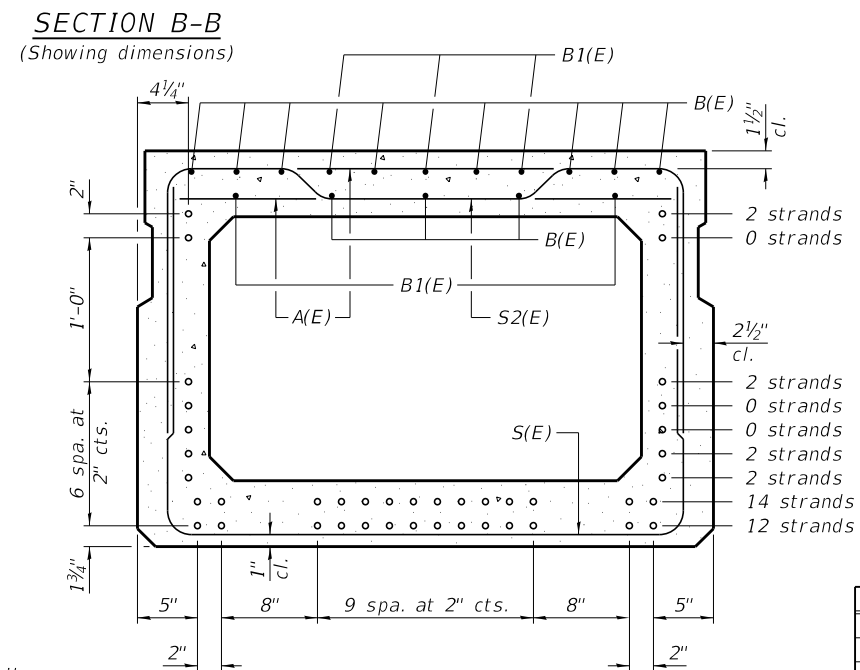
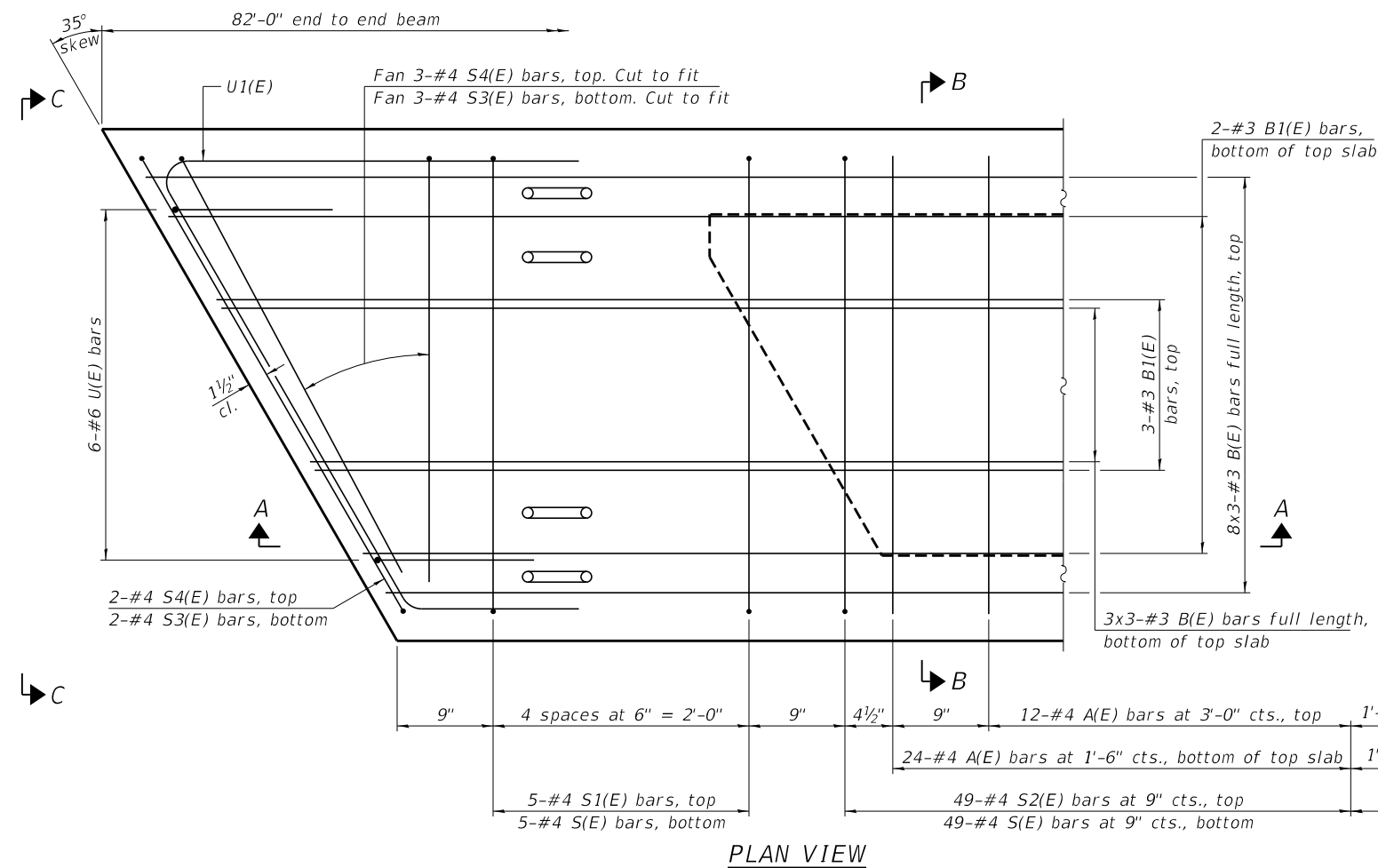
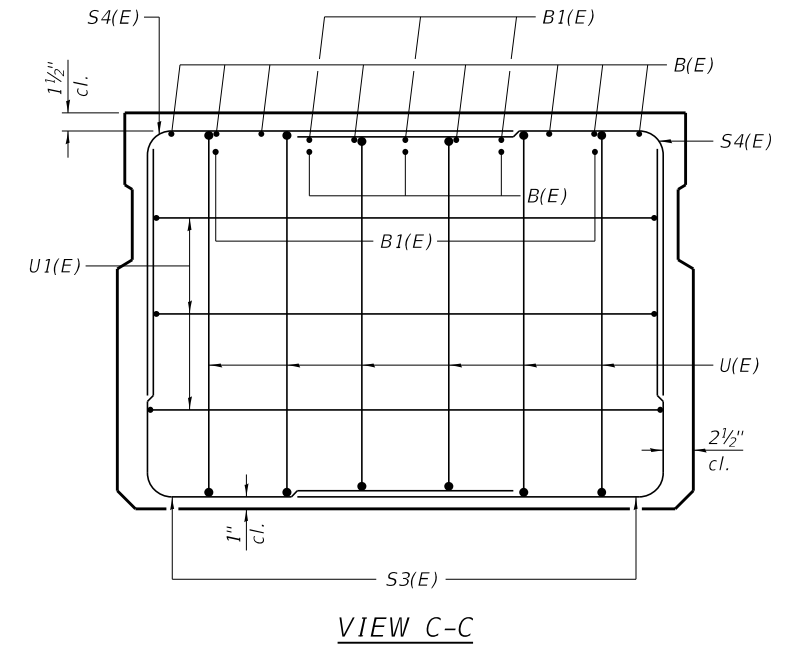
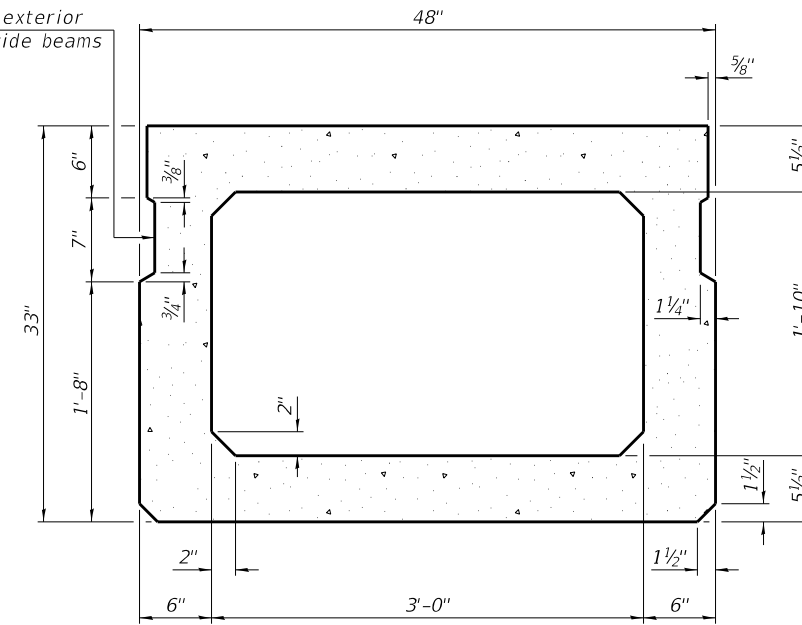
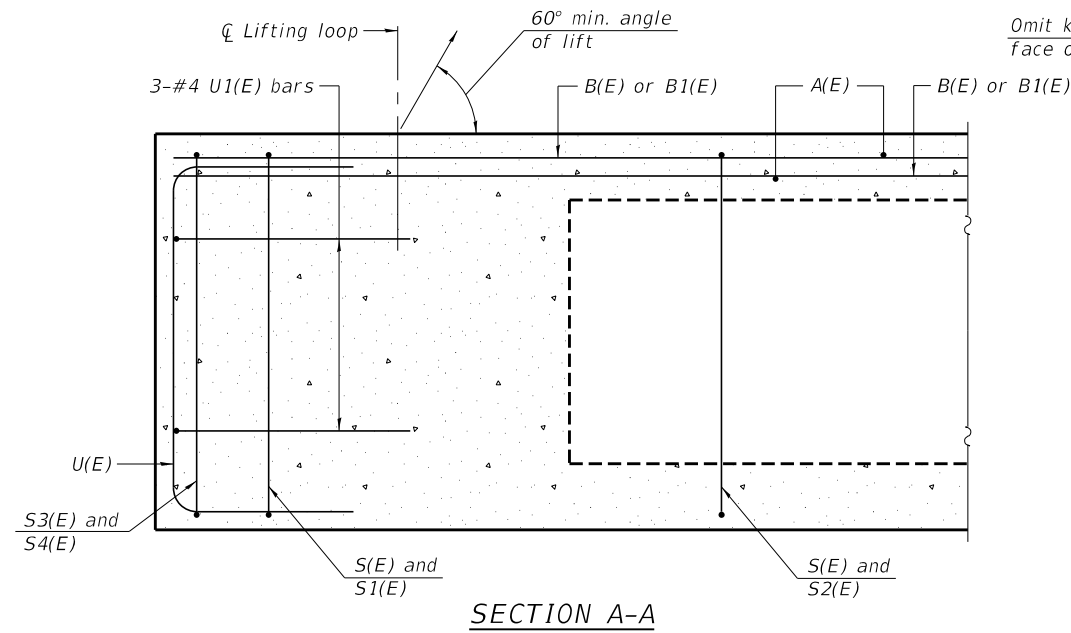
DESIGNED - J.W.F.
 DRAWN - T.W.K.
 CHECKED - S.W.M.
 DATE - 11/04/2020

REVISED -
 REVISED -
 REVISED -
 REVISED -

**STATE OF ILLINOIS
 LAWRENCE COUNTY HIGHWAY DEPARTMENT**

WETLANDS IMPACT EXHIBIT
 SCALE: 1"=40'
 SHEET NO. 1 OF 1 SHEETS
 STA. TO STA.

T.R.	SECTION	COUNTY	TOTAL SHEETS	SHEET NO.
266	18-09115-00-BR	LAWRENCE	21	5
RUSSEL ROAD DISTRICT		CONTRACT NO. 95887		
ILLINOIS FED. AID PROJECT GOGZ(590)				



BAR LIST
ONE BEAM ONLY
(For information only)

Bar	No.	Size	Length	Shape
A(E)	73	#4	3'-7"	—
B(E)	33	#3	28'-3"	—
B1(E)	10	#3	10'-0"	—
S(E)	109	#4	8'-8"	┌
S1(E)	10	#4	7'-5"	┌
S2(E)	99	#4	7'-8"	┌
S3(E)	10	#4	5'-10"	┌
S4(E)	10	#4	5'-2"	┌
U(E)	12	#6	5'-0"	┌
U1(E)	6	#4	9'-3"	┌

SECTION B-B
(Showing reinforcement and permissible strand locations)

Note:
Place the number of strands specified in each row symmetrically about the centerline of beam in the permissible strand locations shown.

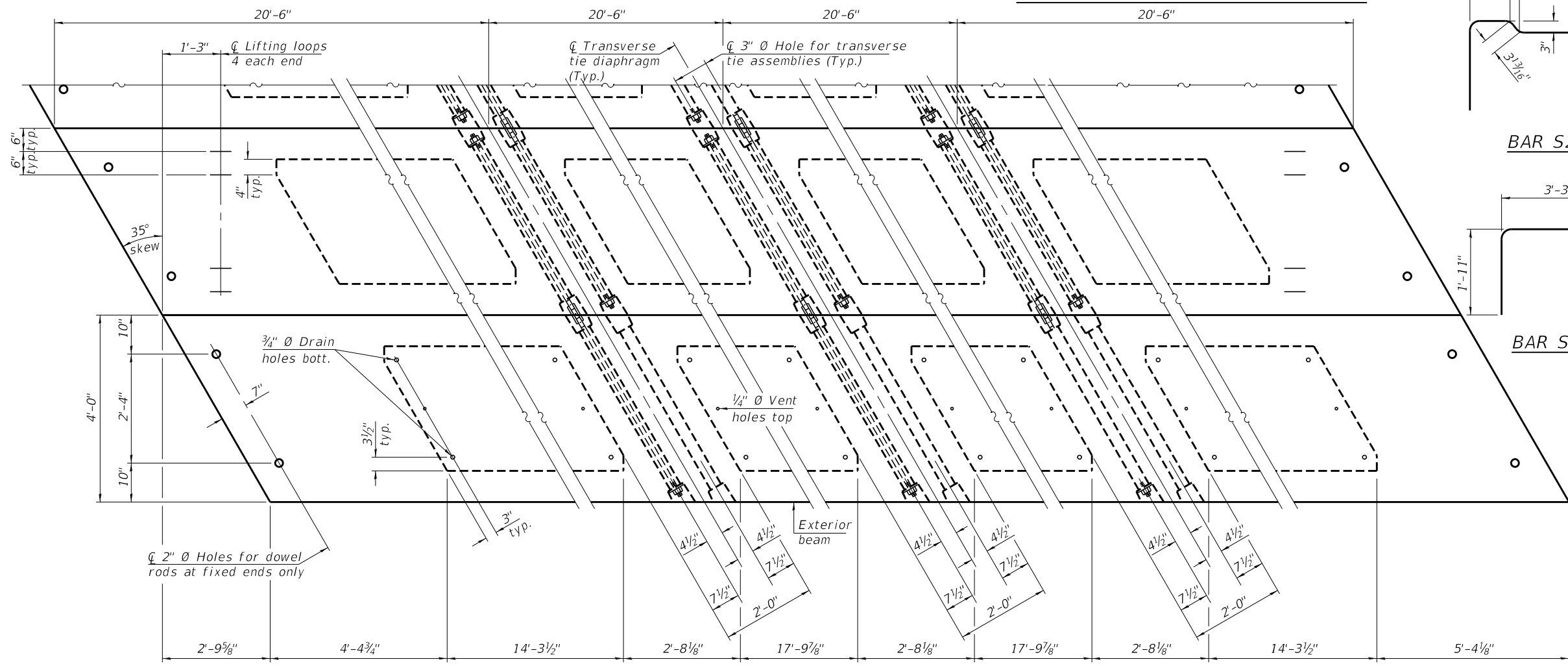
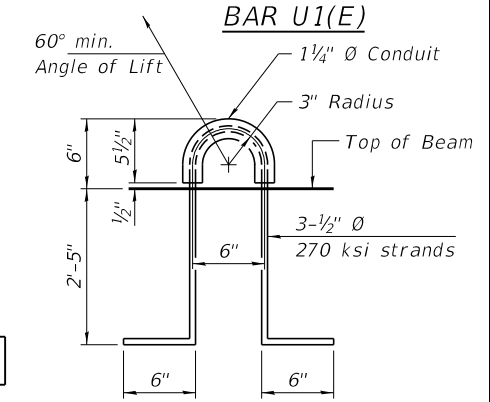
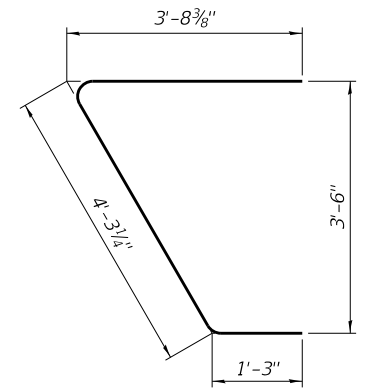
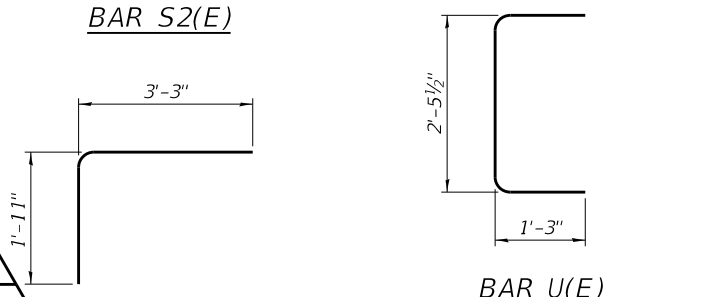
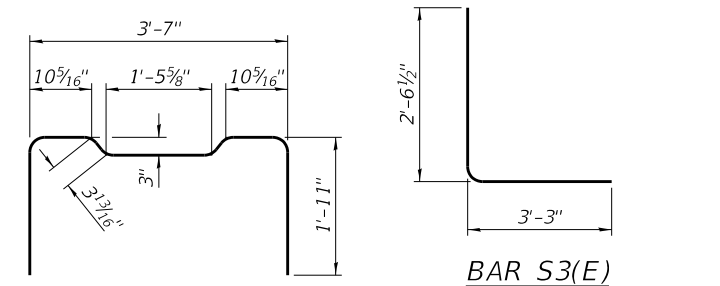
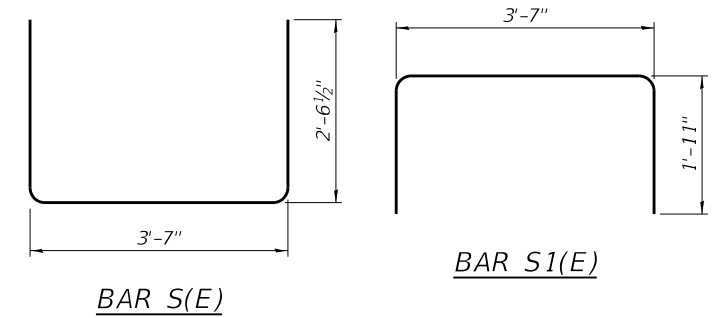
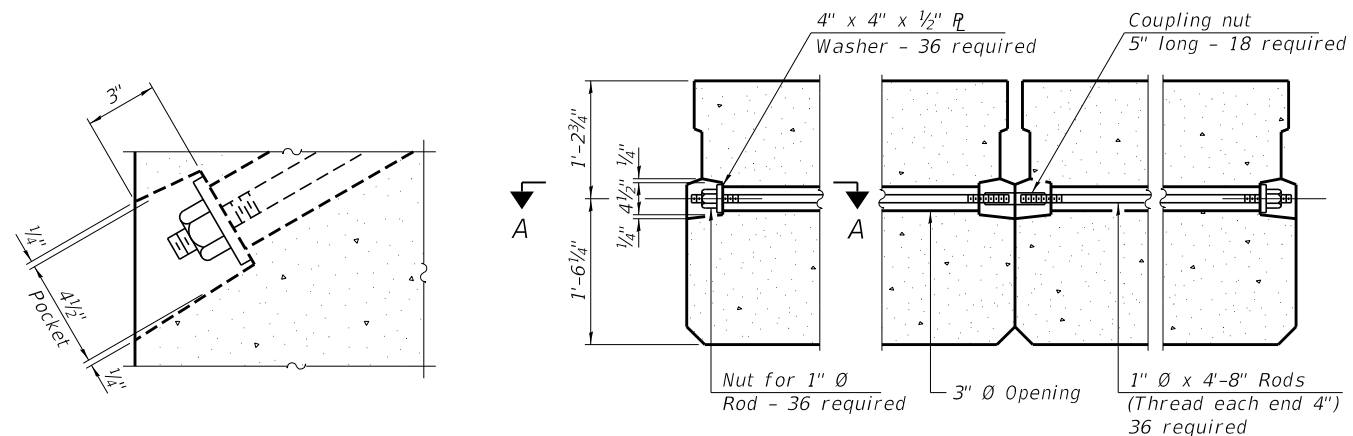
Note:
Spacing of S(E) and S2(E) bars may be adjusted up to 4" in the immediate area of the transverse tie diaphragms to miss the block outs for the transverse ties.
Bars indicated thus 8x3-#3 etc. indicates 8 lines of bars with 3 lengths per line.

MINIMUM BAR LAP
#3 bar = 1'-6"

Note:
See sheet 3 & 4 of 8 for additional details and Bill of Material.

PD-3348-R 1-1-2020

FILE NAME = 180573-shl-bridge.dgn	USER NAME = rmosick	DESIGNED - M.M.P.	REVISED -	STATE OF ILLINOIS LAWRENCE COUNTY HIGHWAY DEPARTMENT	33" x 48" PPC DECK BEAM STRUCTURE NO. 051-3309	T.R.	SECTION	COUNTY	TOTAL SHEETS	SHEET NO.
HAMPTON, LENZINI AND RENWICK, INC. 3035 STEVENSON DRIVE, SUITE 201 SPRINGFIELD, ILLINOIS 62703 ILLINOIS PROFESSIONAL DESIGN FIRM L.S./P.E./S.E. CORP. 184.000959	PLOT SCALE =	CHECKED - R.P.P.	REVISED -			266	18-09115-00-BR	LAWRENCE	21	7
	PLOT DATE = 11/4/2020	DRAWN - M.M.P.	REVISED -			RUSSELL ROAD DISTRICT	CONTRACT NO. 95887			
		CHECKED - S.W.M.	REVISED -			SHEET NO. 2 OF 8 SHEETS				



PLAN VIEW

NOTES

Prestressing steel shall be uncoated high strength, low relaxation 7-wire strand, Grade 270. The nominal diameter shall be 1/2" and the nominal cross-sectional area shall be 0.153 sq. in. The 1" Ø rods in the transverse tie assembly shall be tightened to a snug fit and the threads set. Pockets on exterior faces of bridge shall be filled with grout after transverse tie assembly is in place. Two 1/8" fabric adjusting shims of the dimensions of the exterior bearing pad shall be provided for each bearing pad location. A minimum 2 1/2" Ø lifting pin shall be used to engage the lifting loops during handling. Corrosion Inhibitor, per Article 1020.05(b)(10) and 1021.07 of the Standard Specifications, shall be used in the concrete for precast prestressed concrete deck beams. Compressive strength of prestressed concrete, f'c, shall be 6000 psi. Compressive strength of prestressed concrete at release, f'ci, shall be 5000 psi. Reinforcement bars designated (E) shall be epoxy coated.

BILL OF MATERIAL

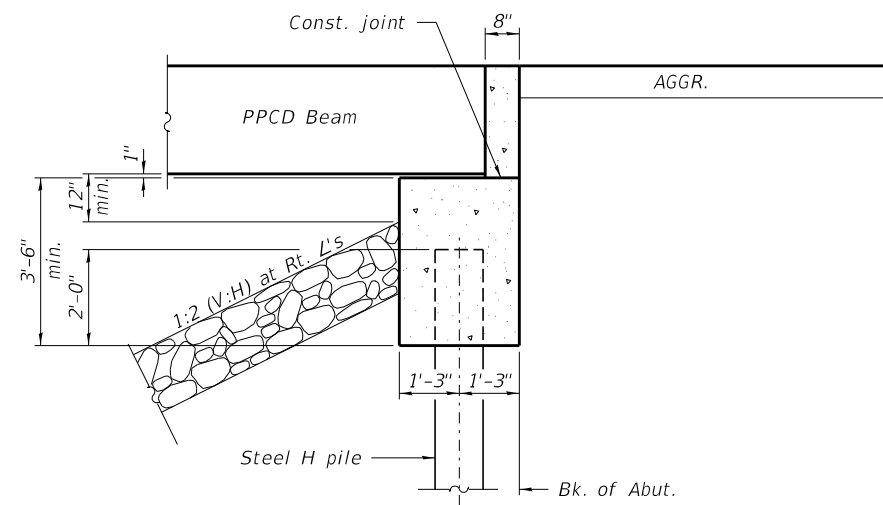
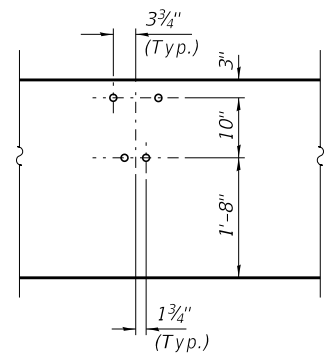
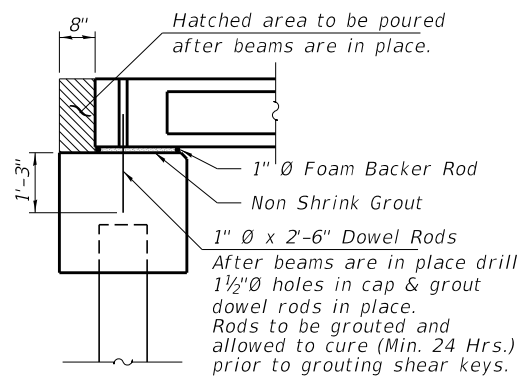
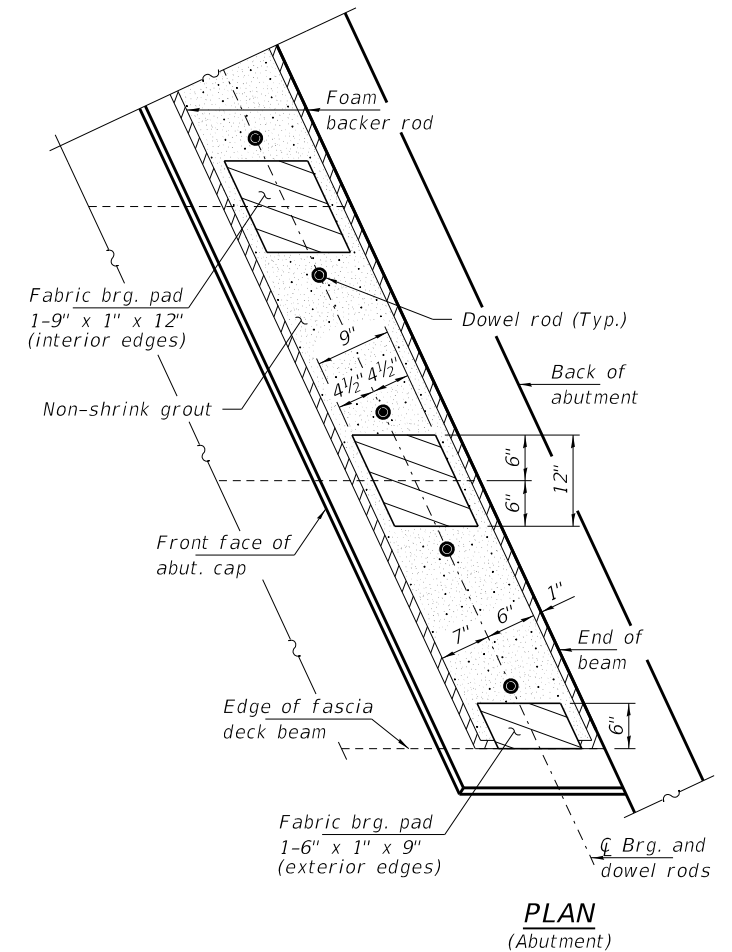
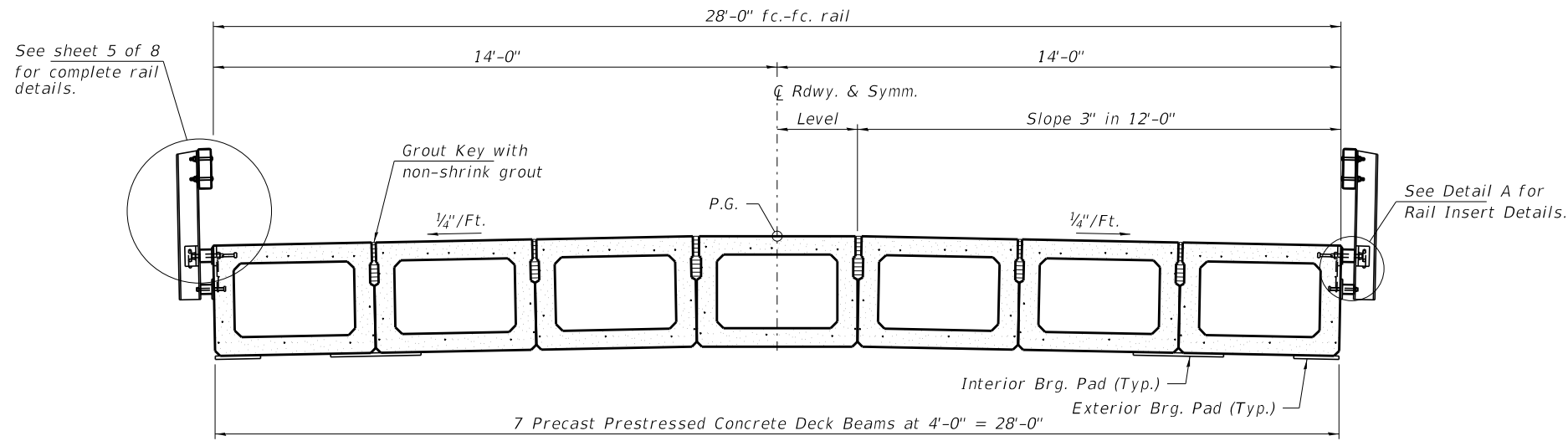
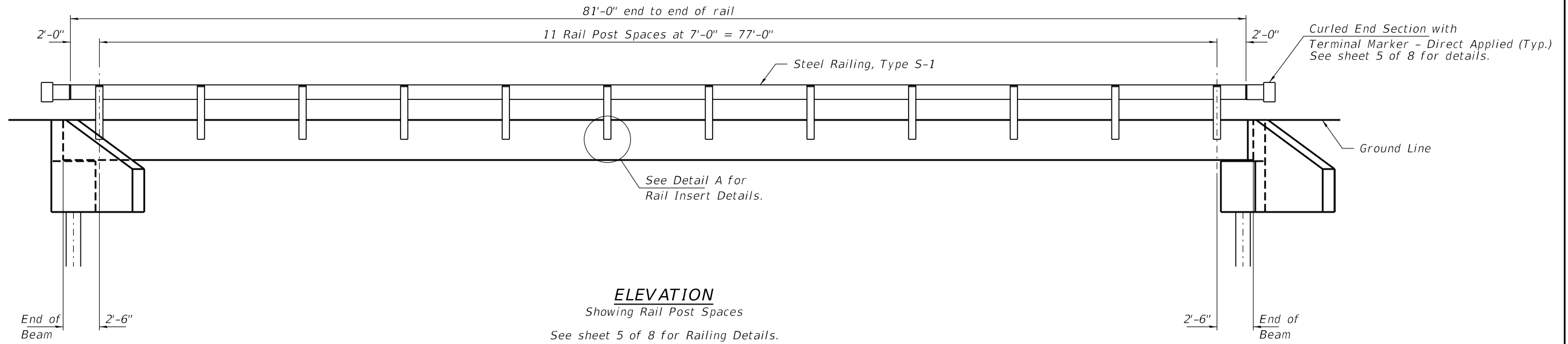
Precast Prestressed Conc. Deck Bms. (33" depth)	Sq. Ft.	2,296
---	---------	-------

Note:
Connect beams in pairs with the transverse tie configuration shown.

PDD-3348-R

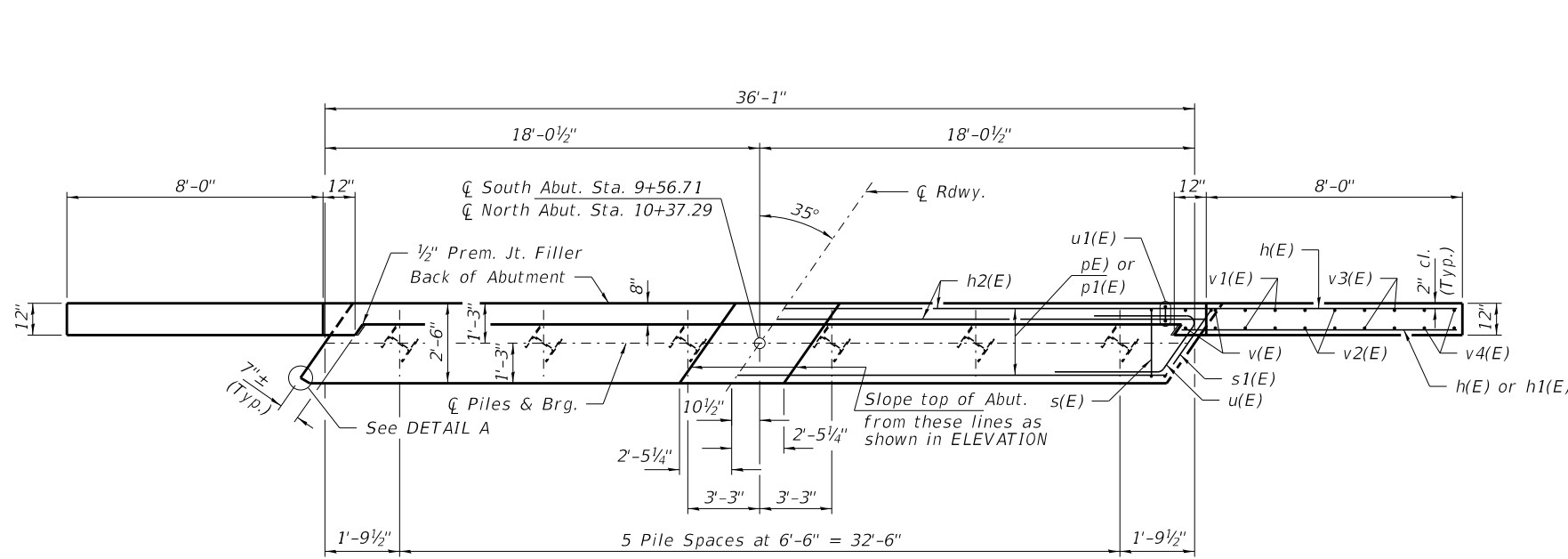
1-1-2020

FILE NAME = 180573-shl-bridge.dgn	USER NAME = rmosick	DESIGNED - M.M.P.	REVISED -	STATE OF ILLINOIS LAWRENCE COUNTY HIGHWAY DEPARTMENT	33" x 48" PPC DECK BEAM DETAILS STRUCTURE NO. 051-3309	T.R.	SECTION	COUNTY	TOTAL SHEETS	SHEET NO.
HAMPTON, LENZINI AND RENWICK, INC. 3035 STEVENSON DRIVE, SUITE 201 SPRINGFIELD, ILLINOIS 62703 ILLINOIS PROFESSIONAL DESIGN FIRM L5 / PE / SE CORP. 184.000959	PLOT SCALE =	CHECKED - R.P.P.	REVISED -			266	18-09115-00-BR	LAWRENCE	21	8
	PLOT DATE = 11/4/2020	DRAWN - M.M.P.	REVISED -			RUSSELL ROAD DISTRICT	CONTRACT NO. 95887			
		CHECKED - S.W.M.	REVISED -			SHEET NO. 3 OF 8 SHEETS				

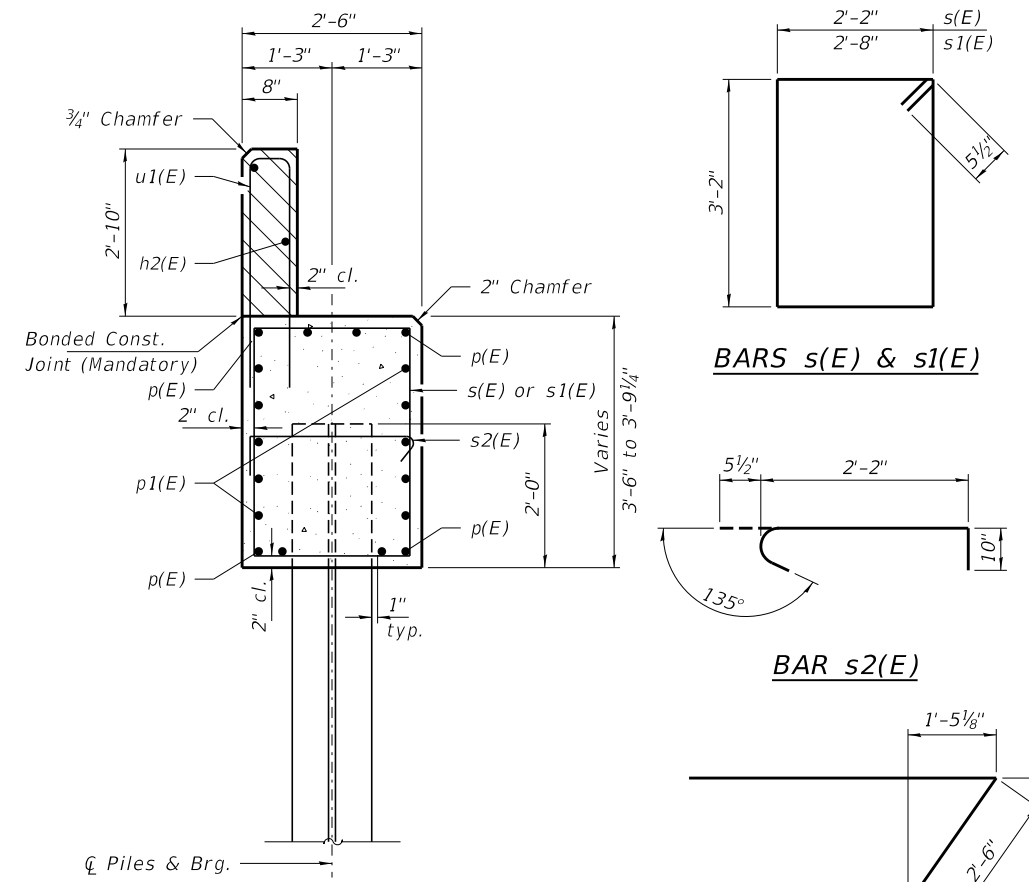


Notes:
The bearing seat surfaces shall be adjusted by shimming the bearing to assure firm and even bearing prior to placement of grout. 2-1/8" fabric adjusting shims of the dimensions of the exterior bearing pad shown shall be provided for each bearing.

FILE NAME = 180573-shl-bridge.dgn	USER NAME = rmosick	DESIGNED - M.M.P.	REVISED -	STATE OF ILLINOIS LAWRENCE COUNTY HIGHWAY DEPARTMENT	SUPERSTRUCTURE DETAILS STRUCTURE NO. 051-3309	T.R.	SECTION	COUNTY	TOTAL SHEETS	SHEET NO.		
HAMPTON, LENZINI AND RENWICK, INC. <small>3035 STEVENSON DRIVE, SUITE 201 SPRINGFIELD, ILLINOIS 62703 ILLINOIS PROFESSIONAL DESIGN FIRM LS / PE / SE CORP. 184.000959</small>						CHECKED - R.P.P.	REVISED -	266	18-09115-00-BR	LAWRENCE	21	9
PLOT SCALE =						DRAWN - M.M.P.	REVISED -	RUSSELL ROAD DISTRICT		CONTRACT NO. 95887		
PLOT DATE = 11/4/2020						CHECKED - S.W.M.	REVISED -	SHEET NO. 4 OF 8 SHEETS				

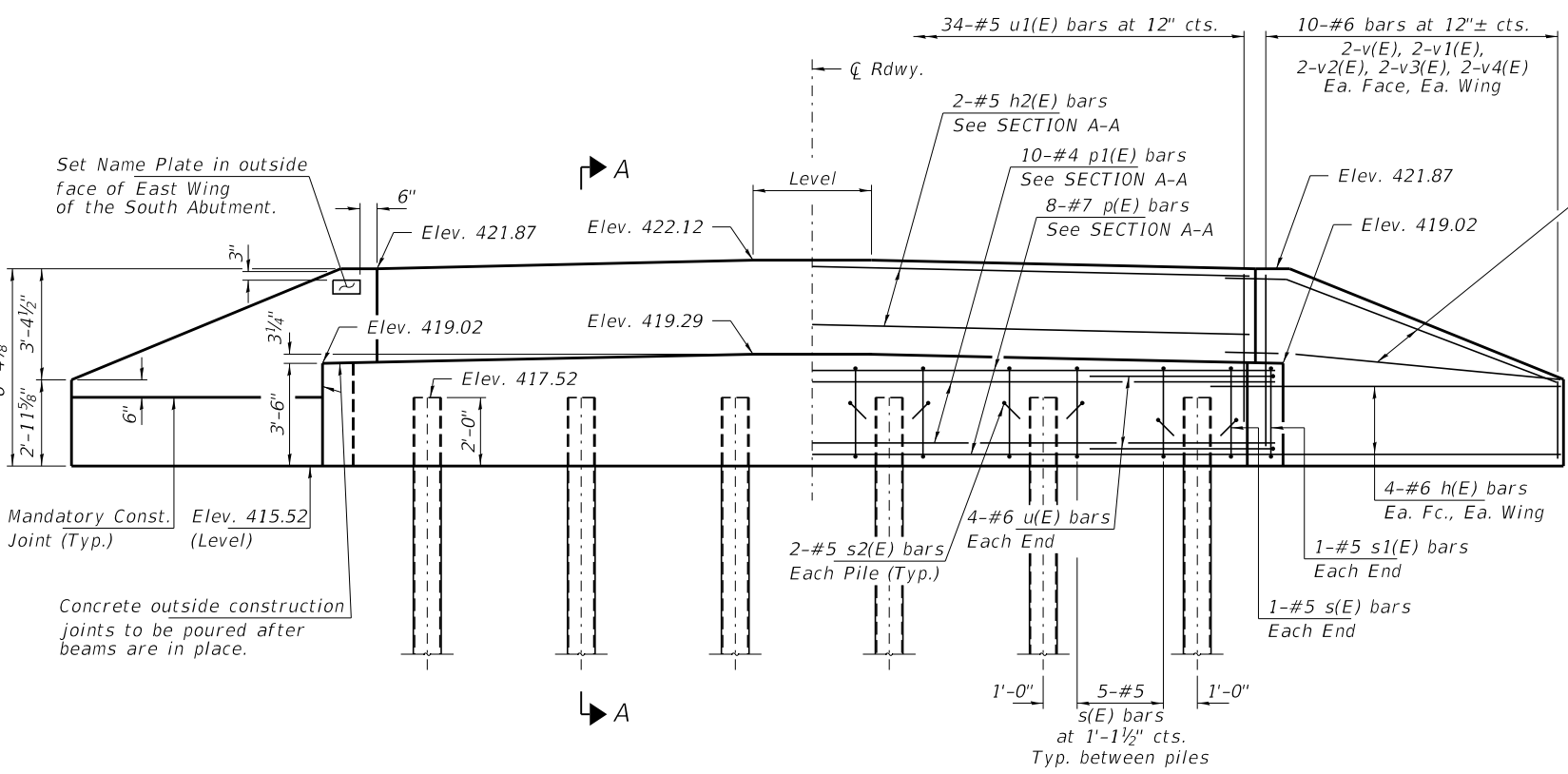


PLAN

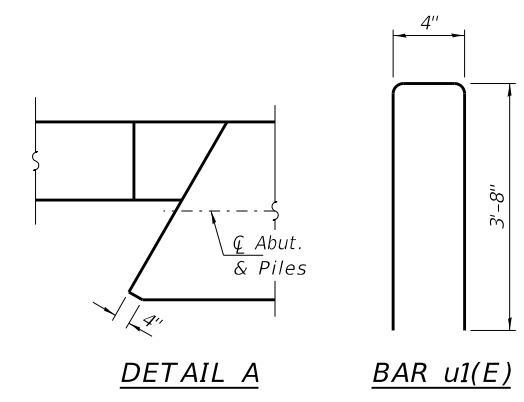


SECTION A-A

Note: Extend h(E) bars into abutment cap.
 Fan 2-#6 h(E) bars (B.F.)
 Fan 2-#6 h1(E) bars (F.F.)
 Each Wing, Bend in field.
 Cast top of wingwall flush with exterior beam face after beams have been erected.



ELEVATION



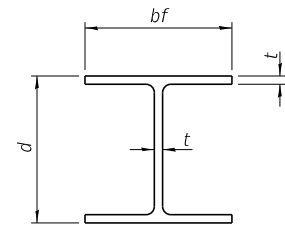
DETAIL A **BAR u1(E)**

PILE DATA

Type: Steel HP10x42 w/Pile Shoes
 Nominal Required Bearing: 184 Kips/Pile
 Factored Resistance Available: 335 Kips/Pile
 Est. Length: 20 Ft/Pile
 No. Production Piles: 12
 No. Test Piles: 0

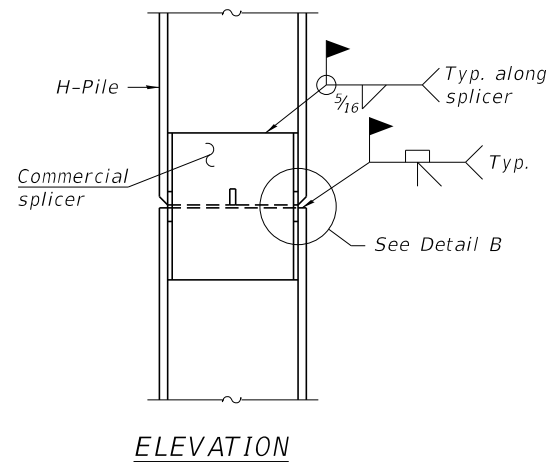
BILL OF MATERIAL - 2 ABUTS.

BAR	NO.	SIZE	LENGTH	SHAPE	
h(E)	40	#6	10'-3"	—	
h1(E)	8	#6	8'-9"	—	
h2(E)	4	#5	35'-9"	—	
p(E)	16	#7	35'-9"	—	
p1(E)	20	#4	35'-9"	—	
s(E)	54	#5	11'-7"	□	
s1(E)	4	#5	12'-7"	□	
s2(E)	24	#5	3'-6"	┌┐	
u(E)	16	#6	11'-2"	┌┐	
u1(E)	68	#5	7'-8"	┌┐	
v(E)	16	#5	5'-11"	—	
v1(E)	16	#5	5'-1"	—	
v2(E)	16	#5	4'-2"	—	
v3(E)	16	#5	3'-6"	—	
v4(E)	16	#5	2'-8"	—	
Concrete Structures				Cu. Yd.	35.4
Reinf. Bars, Epoxy Coated				Pound	4,480
Steel Piles HP10x42				Foot	240
Pile Shoes				Each	12
Name Plates				Each	1

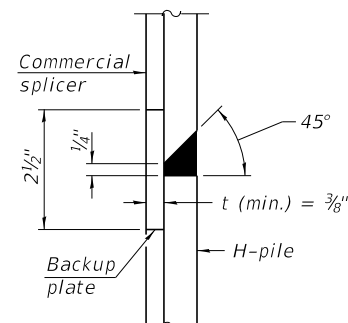


STEEL PILE TABLE

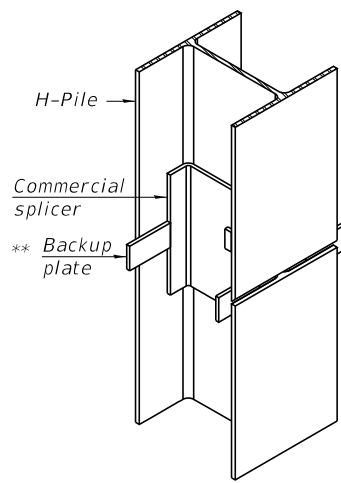
Designation	Depth d	Flange width bf	Web and Flange thickness t	Encasement diameter A
HP 14x117	14 1/4"	14 7/8"	1 3/16"	30"
x102	14"	14 3/4"	1 1/16"	30"
x89	13 7/8"	14 3/4"	5/8"	30"
x73	13 3/8"	14 3/8"	1/2"	30"
HP 12x84	12 1/4"	12 1/4"	1 1/16"	24"
x74	12 1/8"	12 1/4"	5/8"	24"
x63	12"	12 1/8"	1/2"	24"
x53	11 3/4"	12"	7/16"	24"
HP 10x57	10"	10 1/4"	9/16"	24"
x42	9 3/4"	10 1/8"	7/16"	24"
HP 8x36	8"	8 1/8"	7/16"	18"



ELEVATION

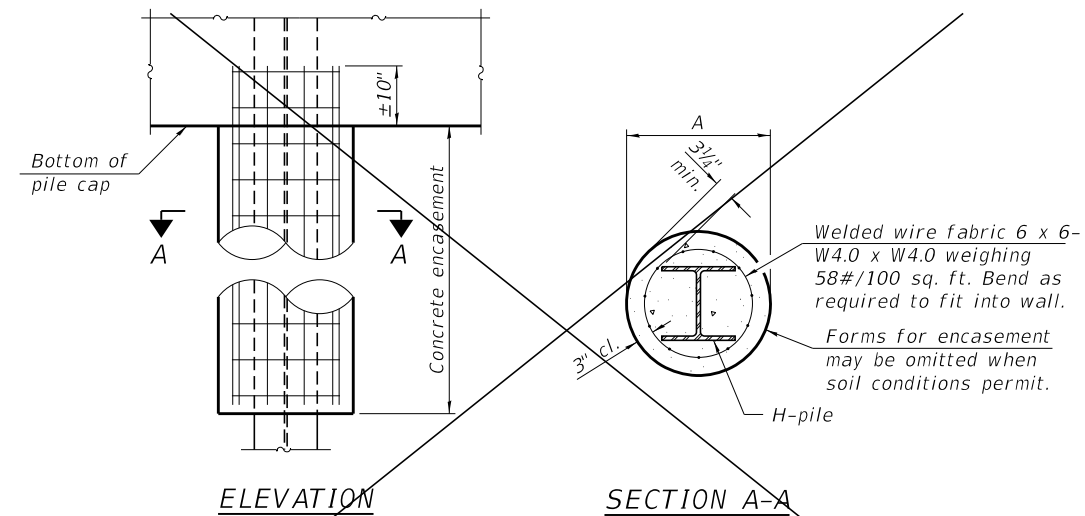


DETAIL "B"



ISOMETRIC VIEW

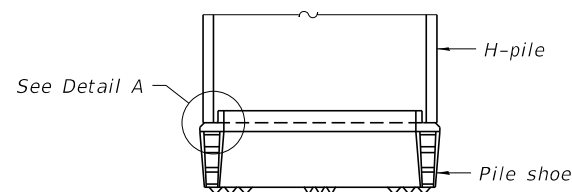
WELDED COMMERCIAL SPLICE



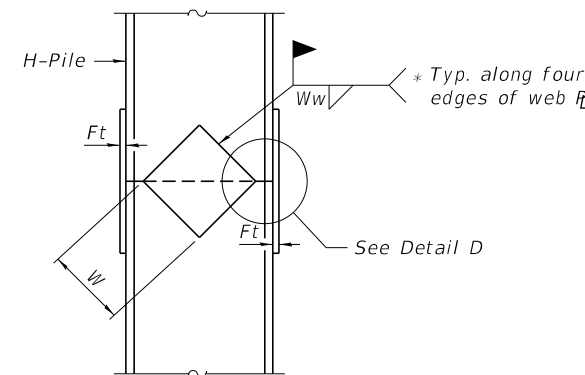
ELEVATION

SECTION A-A

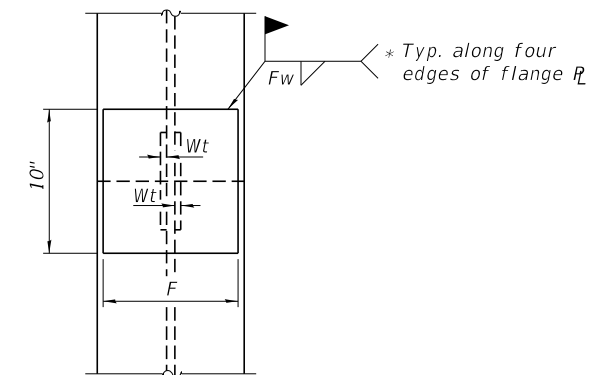
INDIVIDUAL PILE CONCRETE ENCASEMENT - (NOT REQUIRED)



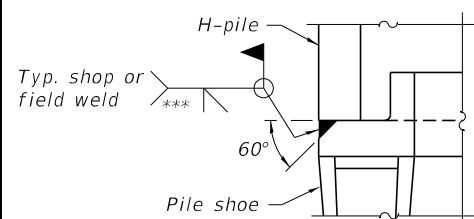
ELEVATION



ELEVATION

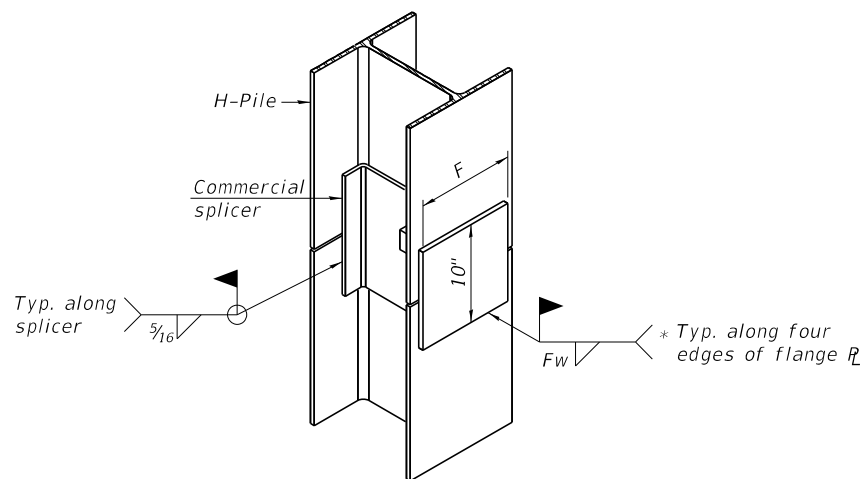


END VIEW



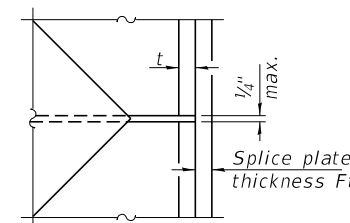
DETAIL A

SHOE ATTACHMENT



ISOMETRIC VIEW

WELDED COMMERCIAL SPLICE ALTERNATE



DETAIL D

WELDED PLATE FIELD SPLICE

Designation	F	Ft	Fw	W	Wt	Ww
HP 14x117	12 1/2"	1"	7/8"	7 3/4"	5/8"	1/2"
x102	12 1/2"	7/8"	3/4"	7 3/4"	5/8"	1/2"
x89	12 1/2"	3/4"	1 1/16"	7 3/4"	5/8"	1/2"
x73	12 1/2"	5/8"	9/16"	7 3/4"	5/8"	1/2"
HP 12x84	10"	7/8"	1 1/16"	6 1/2"	5/8"	1/2"
x74	10"	7/8"	1 1/16"	6 1/2"	5/8"	1/2"
x63	10"	5/8"	1/2"	6 1/2"	1/2"	3/8"
x53	10"	5/8"	1/2"	6 1/2"	1/2"	3/8"
HP 10x57	8"	3/4"	9/16"	5 1/4"	1/2"	3/8"
x42	8"	5/8"	9/16"	5 1/4"	1/2"	3/8"
HP 8x36	7"	5/8"	7/16"	4 1/4"	1/2"	3/8"

Note:
The steel H-piles shall be according to AASHTO M270 Grade 50.

* Interrupt welds 1/4" from end of web and/or each flange.

** Remove portions of backup plates that extend outside the flanges.

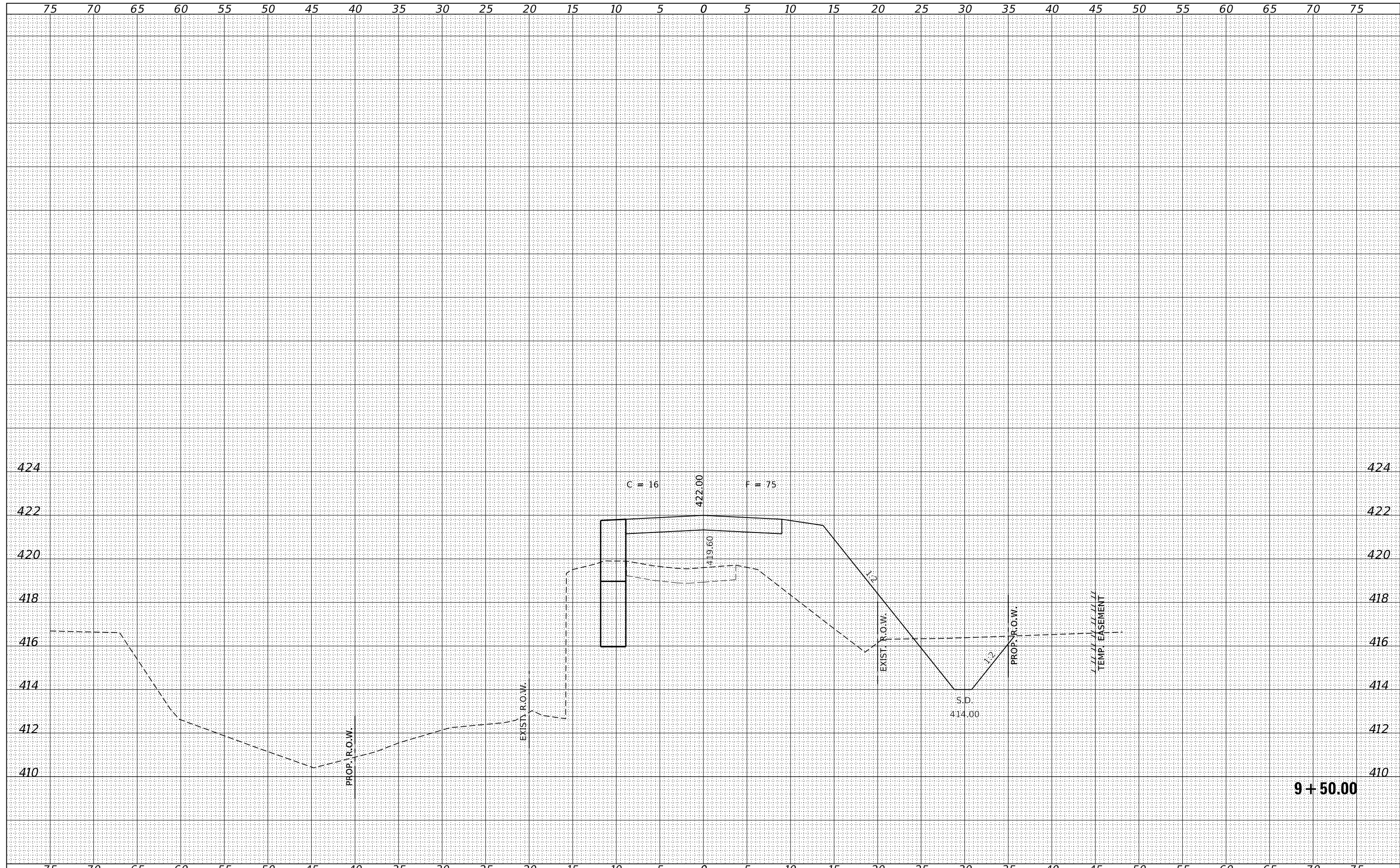
*** Weld size per pile shoe manufacturer (5/16" min.).

F-HP 1-1-2020

FILE NAME = 180573-shl-bridge.dgn	USER NAME = rmosck	DESIGNED - M.M.P.	REVISD -	STATE OF ILLINOIS LAWRENCE COUNTY HIGHWAY DEPARTMENT	HP PILE DETAILS STRUCTURE NO. 051-3309	T.R.	SECTION	COUNTY	TOTAL SHEETS	SHEET NO.
HAMPTON, LENZINI AND RENWICK, INC. 3035 STEVENSON DRIVE, SUITE 201 SPRINGFIELD, ILLINOIS 62703 ILLINOIS PROFESSIONAL DESIGN FIRM L.S./P.E./S.E. CORP. 184.000959	PLOT SCALE =	CHECKED - R.P.P.	REVISD -			266	18-09115-00-BR	LAWRENCE	21	12
	PLOT DATE = 11/4/2020	DRAWN - M.M.P.	REVISD -			RUSSELL ROAD DISTRICT		CONTRACT NO. 95887		
		CHECKED - S.W.M.	REVISD -			SHEET NO. 7 OF 8 SHEETS		ILLINOIS FED. AID PROJECT GOGZ(590)		

FINAL SURVEY	SURVEYED	BY	DATE
NOTE BOOK	PLOTTED		
NO.	TEMPLATE		
	AREAS		
	CHECKED		

ORIGINAL SURVEY	SURVEYED	BY	DATE
NOTE BOOK	PLOTTED		
NO.	TEMPLATE		
	AREAS		
	CHECKED		



FILE NAME = 180573-shl-xssheets.dgn	USER NAME = rmosck	DESIGNED - J.W.F.	REvised -	STATE OF ILLINOIS LAWRENCE COUNTY HIGHWAY DEPARTMENT	STATION CROSS SECTIONS			T.R.	SECTION	COUNTY	TOTAL SHEETS	SHEET NO.
HAMPTON, LENZINI AND RENWICK, INC. 3885 STEVENSON DRIVE, SUITE 201 SPRINGFIELD, ILLINOIS 62703 ILLINOIS PROFESSIONAL DESIGN FIRM LS / PE / SE CORP. 184.000958	PLOT SCALE = \$SCALE\$	DRAWN - T.W.K.	REvised -		286	18-09115-00-BR	LAWRENCE	21	16			
PLOT DATE = 11/04/2020	CHECKED - S.W.M.	REvised -	SCALE: 5H:2V		RUSSELL ROAD DISTRICT		CONTRACT NO. 95887		ILLINOIS	FED. AID PROJECT GQGZ(590)		
	DATE - 11/04/2020	REvised -	SHEET NO. 3 OF 8 SHEETS		STA. 9+50.00	TO STA. 9+50.00						

