

STATE OF ILLINOIS  
DEPARTMENT OF TRANSPORTATION

F.A.I. RTE.	SECTION	COUNTY	TOTAL SHEETS	SHEET NO.
290	2020-069-1	COOK & DUPAGE	17	1
		ILLINOIS	CONTRACT NO. 62L47	

FOR INDEX OF SHEETS, SEE SHEET NO. 2

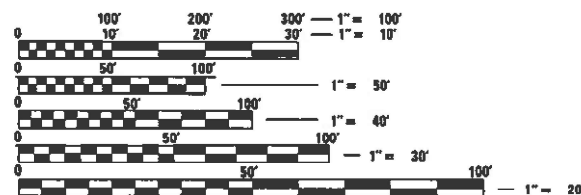
THE PROJECT IS LOCATED IN THE VILLAGE OF ELMHURST

PROPOSED  
HIGHWAY PLANS

F.A.I. 290: I-290 /US-20  
FROM COOK COUNTY LINE RD. TO GRAND AVE.  
SECTION: 2020-069-1  
PROJECT: NHPP-7592(232)  
CRACK JOINT SEALING  
COOK & DUPAGE COUNTIES

C-91-266-20

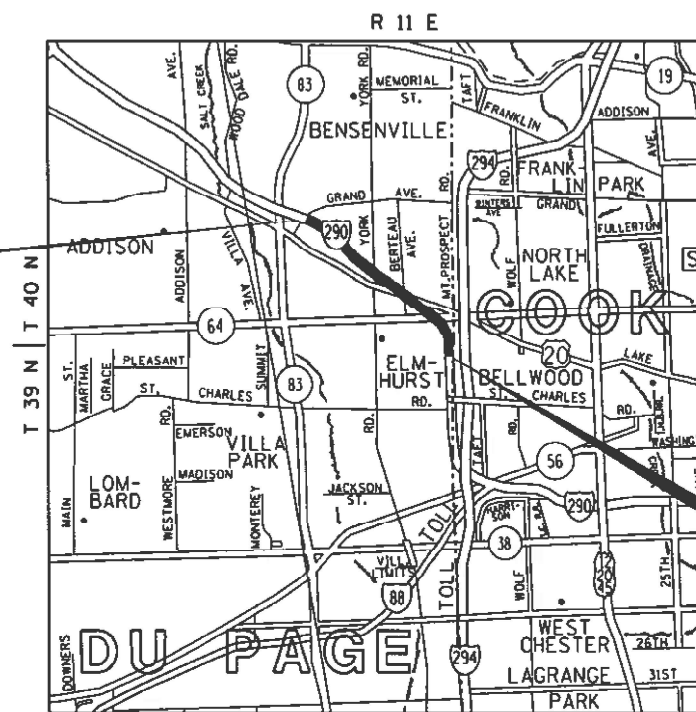
TRAFFIC DATA:  
ROOSEVELT ROAD 2019 ADT = 152,100  
POSTED SPEED LIMIT = 55 MPH



FULL SIZE PLANS HAVE BEEN PREPARED USING STANDARD ENGINEERING SCALES. REDUCED SIZED PLANS WILL NOT CONFORM TO STANDARD SCALES. IN MAKING MEASUREMENTS ON REDUCED PLANS, THE ABOVE SCALES MAY BE USED.

J.U.L.E.  
JOINT UTILITY LOCATION INFORMATION FOR EXCAVATION  
1-800-692-0123  
OR 811

PROJECT ENDS  
STA. 166 + 92



PROJECT BEGINS  
STA. 12 + 31

YORK AND ADDISON TOWNSHIPS

GROSS AND NET LENGTH = 15,461 FT. = 2.93 MILES

PROJECT MANAGER J. ALAIN MIDY (847) 221-3056

CONTRACT NO. 62L47

STATE OF ILLINOIS  
DEPARTMENT OF TRANSPORTATION

SUBMITTED *December 6, 2020*  
*Anthony J. Wengler* REGIONAL ENGINEER  
December 4, 2020  
*Scott A. Elk* ENGINEER OF DESIGN AND ENVIRONMENT  
December 4, 2020  
*James J. ...* DIRECTOR OF HIGHWAYS PROJECT IMPLEMENTATION

PRINTED BY THE AUTHORITY  
OF THE STATE OF ILLINOIS

**INDEX OF SHEETS**

**STANDARDS**

**GENERAL NOTES**

SHEET NO.	DESCRIPTION		
1	COVER SHEET	701106-02	OFF-RD OPERATIONS, MULTILANE MORE THAN 15' (4.5 m) AWAY
2	INDEX OF SHEETS, STATE STANDARDS AND GENERAL NOTES		
3	SUMMARY OF QUANTITIES	701400-10	APPROACH TO LANE CLOSURE, FREEWAY/EXPRESSWAY
4	EXISTING CROSS SECTIONS	701401-12	LANE CLOSURE, FREEWAY / EXPRESSWAY
5-10	PROPOSED PLANS AND PAVEMENT MARKING PLANS	701411-09	LANE CLOSURE, MULTILANE, AT ENTRANCE OR EXIT RAMP, FOR SPEEDS > = 45 MPH
11	FREEWAY ENTRANCE AND EXIT RAMP CLOSURE DETAILS (TC-08)	701426-09	LANE CLOSURE, MULTILANE, INTERMITTENT OR MOVING OPERATIONS, FOR SPEEDS > = 45 MPH
12	TRAFFIC CONTROL DETAILS FOR FREEWAY SINGLE AND MULTI-LANE WEAVE (TC-09)	701428-01	MULTILANE, DAY OPERATIONS ONLY, FOR LANE CLOSURE, SPEEDS . 45 MPH TO 55 MPH
13-14	MULTI-LANE FREEWAY PAVEMENT MARKING DETAIL (TC-12)	701446-11	TWO LANE CLOSURE, FREEWAY/EXPRESSWAY
15	TRAFFIC CONTROL DETAILS FOR FREEWAY SHOULDER CLOSURES AND PARTIAL RAMP CLOSURES (TC-17)	701601-09	URBAN LANE CLOSURE, MULTILANE, 1W OR 2W WITH NON TRAVERSABLE MEDIAN
16	FREEWAY/EXPRESSWAY SIGNING FOR FLAGGING OPERATIONS AT WORK ZONE OPENINGS ON FREEWAYS/EXPRESSWAYS (TC-18)	701901-08	TRAFFIC CONTROL DEVICES
17	CRACK & JOINT SEALING DETAIL (PD-11)		

BEFORE STARTING ANY EXCAVATION, THE CONTRACTOR SHALL CALL "J.U.L.I.E". AT (800) 892-0123 OR 811 FOR FIELD LOCATIONS OF BURIED ELECTRIC, TELEPHONE AND GAS UTILITIES. 48 HOUR NOTIFICATION IS REQUIRED.

THE CONTRACTOR SHALL COORDINATE CONSTRUCTION ACTIVITIES WITH UTILITY COMPANIES OF THE VILLAGE OF ELMHURST.

ALL DAMAGE TO EXISTING PAVEMENT MARKINGS OR RAISED REFLECTIVE PAVEMENT MARKERS OUTSIDE THE REMOVAL LINE SHOWN ON THE PLANS SHALL BE REPLACED AT NO ADDITIONAL COST TO THE DEPARTMENT.

THE CONTRACTOR WILL NOT BE ALLOWED TO SET UP A YARD OR FIELD OFFICE ON STATE PROPERTY WITHOUT WRITTEN PERMISSION FROM THE DEPARTMENT.

IT SHALL BE THE CONTRACTOR'S RESPONSIBILITY TO VERIFY ALL DIMENSIONS AND CONDITIONS EXISTING IN THE FIELD PRIOR TO CONSTRUCTION AND ORDERING OF MATERIALS.

THE CONTRACTOR SHALL REQUEST AND GAIN APPROVAL FROM THE ILLINOIS DEPARTMENT OF TRANSPORTATION'S EXPRESSWAY TRAFFIC OPERATIONS ENGINEER AT WWW.IDOTLCS.COM TWENTY-FOUR (24) HOURS IN ADVANCE OF ALL DAILY LANE, RAMP AND SHOULDER CLOSURES AND 7 DAYS IN ADVANCE OF ALL PERMANENT AND WEEKEND CLOSURES ON ALL FREEWAYS AND/OR EXPRESSWAYS IN DISTRICT ONE. THIS ADVANCE NOTIFICATION IS CALCULATED BASED ON MONDAY THROUGH FRIDAY AND SHALL NOT INCLUDE WEEKENDS OR HOLIDAYS.

THE ENGINEER SHALL CONTACT EMAD ALHUSSEINI, AREA TRAFFIC FIELD ENGINEER AT Emad.Alhousseini@illinois.gov A MINIMUM OF TWO (2) WEEKS PRIOR TO THE PLACEMENT OF PERMANENT PAVEMENT MARKINGS.

THE CONTRACTOR SHALL BE REQUIRED TO PROVIDE ACCESS TO ABUTTING PROPERTY AT ALL TIMES DURING THE CONSTRUCTION OF THIS PROJECT.

DO NOT SCALE PLANS FOR CONSTRUCTION DIMENSIONS.

BEFORE BEGINNING ANY WORK, THE CONTRACTOR SHALL RETAIN AND RECORD ALL EXISTING PAVEMENT MARKING LINES (AND RAISED REFLECTIVE PAVEMENT MARKERS) FOR FUTURE REFERENCES, IN ORDER THAT THESE LOCATIONS CAN BE RE-ESTABLISHED FOR STRIPING.

ALL CRACK ROUTIG & CRACK SEALING LOCATIONS WILL BE DETERMINED IN THE FIELD BY THE ENGINEER.

MODIFIED URETHANE PAVEMENT MERKING SHALL BE PLACED IMMEDIATELTLY AFTER C & J TEMPERATURE HAS COOLED DOWN AND DOES NOT AFFECT THE APPLICATION OF MODIFIED URETHANE PAVEMENT MARKING.

ALL STAGE CHANGES REQUIRING THE STOPPING AND/OR THE PACING OF TRAFFIC SHALL TAKE PLACE DURING THE ALLOWABLE HOURS FOR FULL EXPRESSWAY CLOSURES AND SHALL BE APPROVED BY THE DEPARTMENT. THE CONTRACTOR SHALL NOTIFY THE DISTRICT ONE EXPRESSWAY TRAFFIC CONTROL SUPERVISOR AT LEAST 3 WORKING DAYS (WEEKENDS AND HOLIDAYS DO NOT COUNT INTO THIS 72 HOURS NOTIFICATION) IN ADVANCE OF ANY PROPOSED STAGE CHANGE.

A MAINTENANCE OF TRAFFIC PLAN SHALL BE SUBMITTED TO THE DISTRICT ONE EXPRESSWAY TRAFFIC CONTROL SUPERVISOR 14 DAYS IN ADVANCE OF ANY STAGE CHANGES OR FULL EXPRESSWAY CLOSURES. THE MAINTENANCE OF TRAFFIC PLAN SHALL INCLUDE, BUT NOT BE LIMITED TO: LANE AND RAMP CLOSURES, EXISTING GEOMETRICS, AND EQUIPMENT AND MATERIAL LOCATION.

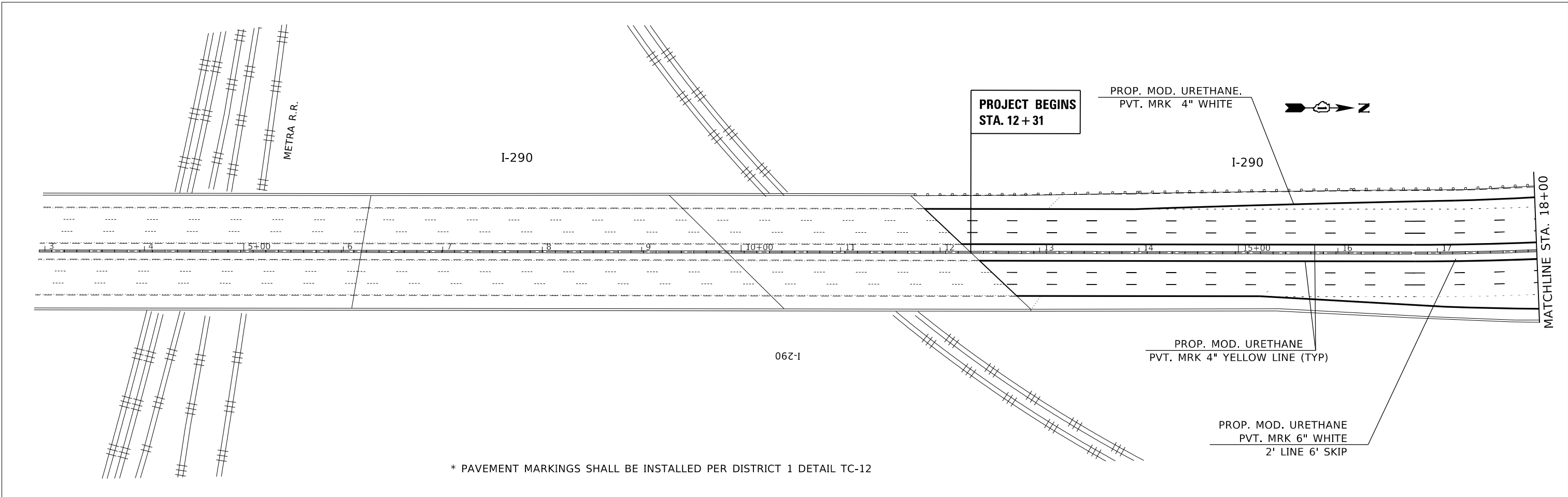
FILE NAME: p:\upbarcom.doi.illinois.gov\PIWDOT\Documents\DOT\_Offices\District\_1\Project\ID146820\CADD\Drawings\ID146820-ent-general.dgn

REV-SEP

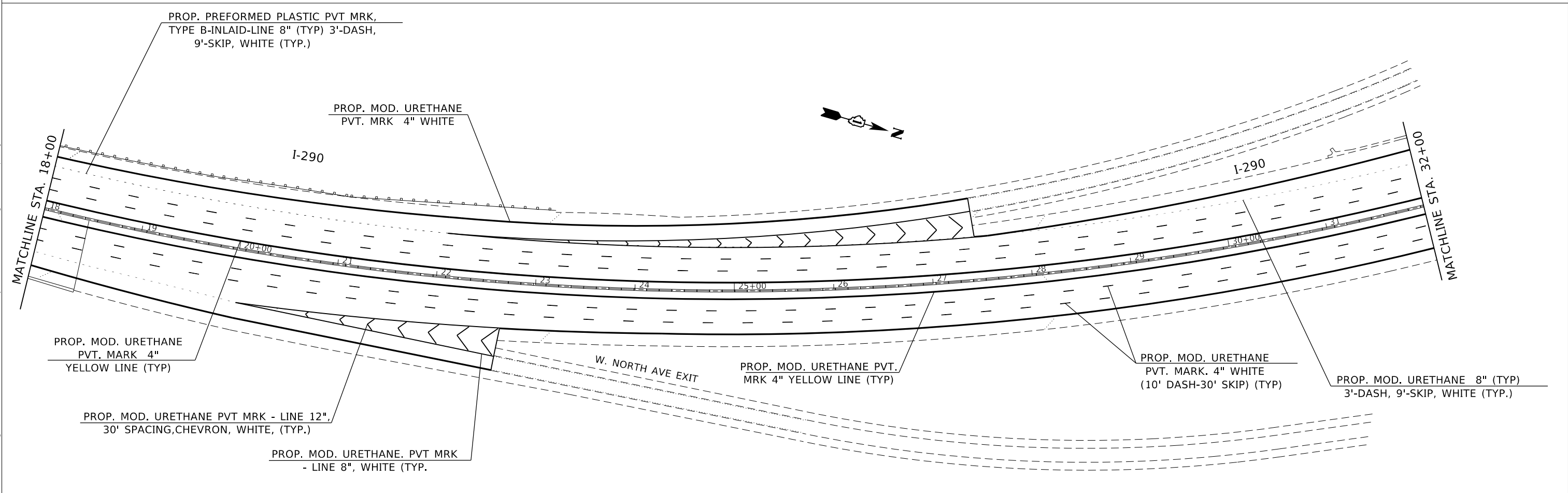
USER NAME = s0uscs	DESIGNED -	REVISED -	<b>STATE OF ILLINOIS DEPARTMENT OF TRANSPORTATION</b>	<b>INDEX OF SHEETS, STATE STANDARDS AND GENERAL NOTES IL 290- US20: (COOK CO LINE RD. TO GRAND AVE.)</b>	F.A.I. RTE.	SECTION	COUNTY	TOTAL SHEETS	SHEET NO.	
DRAWN -	REVISED -	290			2020-069-I	COOK & DUPAGE	17	2		
PLOT SCALE = 100.0000' / in.	CHECKED -	REVISED -			CONTRACT NO. 62L47					
PLOT DATE = 10/16/2020	DATE -	REVISED -			SCALE:	[ SHEET	OF	SHEETS ]	STA.	TO
					[ ILLINOIS ] FED. AID PROJECT					







\* PAVEMENT MARKINGS SHALL BE INSTALLED PER DISTRICT 1 DETAIL TC-12



MODEL: Default  
 FILE: \\nrcs\p\planning\room\ad\illinois\gov\p\w\dot\Documents\DOT\_Offices\District\_1\Projects\146820\CaddData\Design\146820-sh-1-bn.dgn

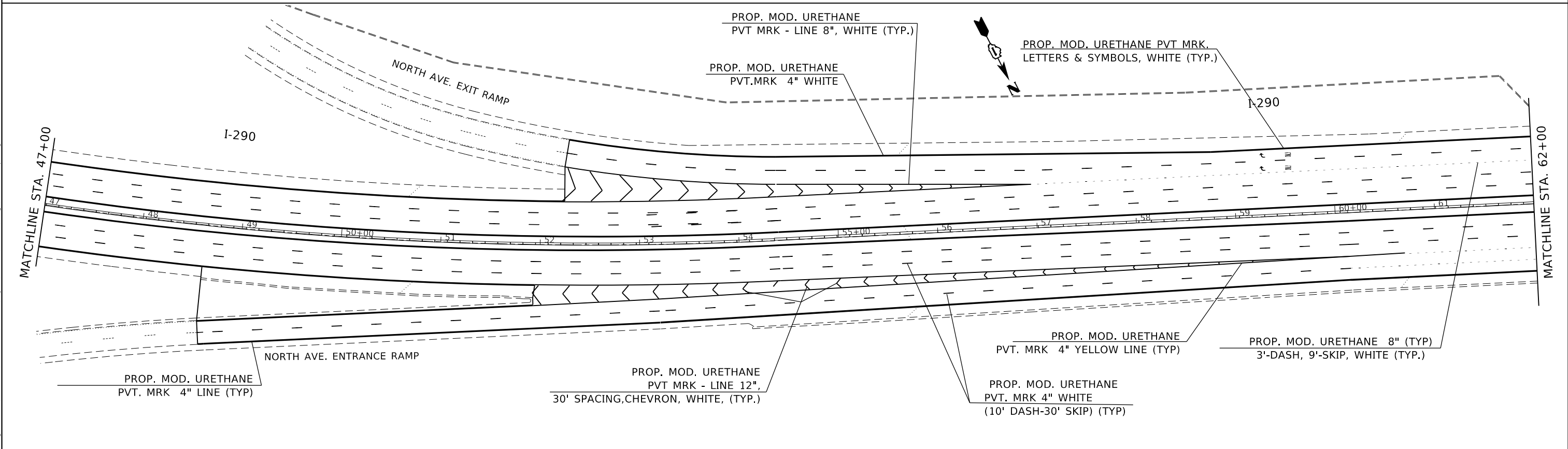
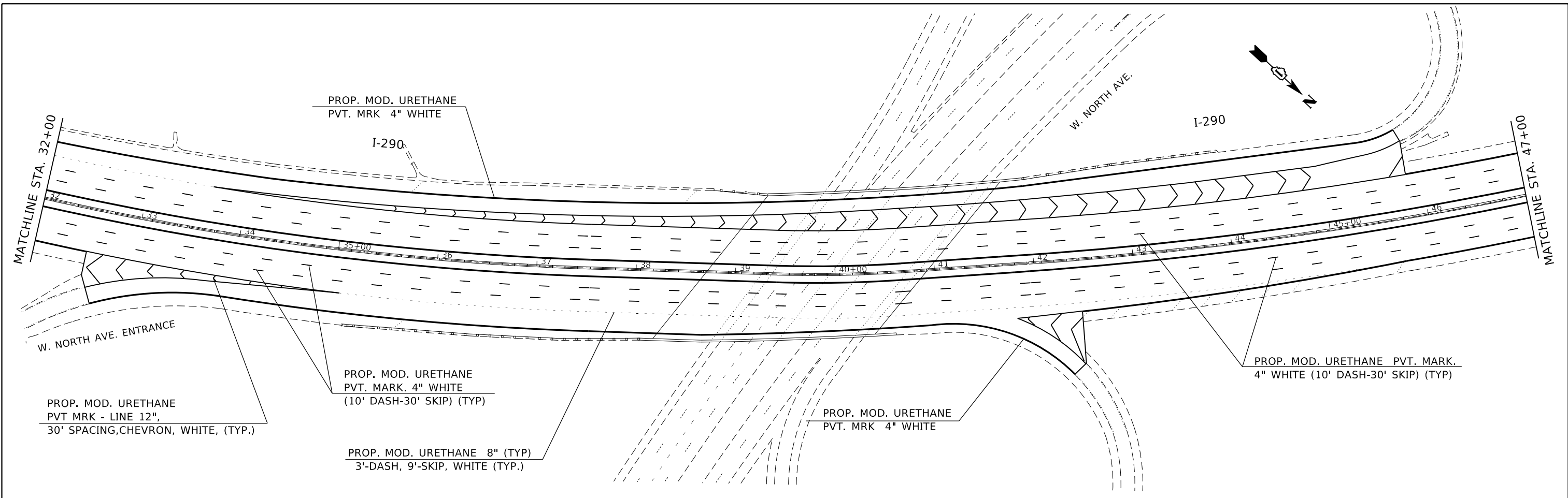
USER NAME = s0uscs	DESIGNED -	REVISED -
	DRAWN -	REVISED -
PLOT SCALE = 100,0000' / in.	CHECKED -	REVISED -
PLOT DATE = 10/16/2020	DATE -	REVISED -

**STATE OF ILLINOIS  
DEPARTMENT OF TRANSPORTATION**

**ROADWAY PLAN IL I-290  
(COOK COUNTY LINE TO GRAND AVE)**

SCALE: SHEET OF SHEETS STA. TO STA. 32+00

F.A.J. RTE.	SECTION	COUNTY	TOTAL SHEETS	SHEET NO.
290	2020-069-1	DUPAGE	17	5
			CONTRACT NO. 62L47	
		ILLINOIS	FED. AID PROJECT	



\* PAVEMENT MARKINGS SHALL BE INSTALLED PER DISTRICT 1 DETAIL TC-12

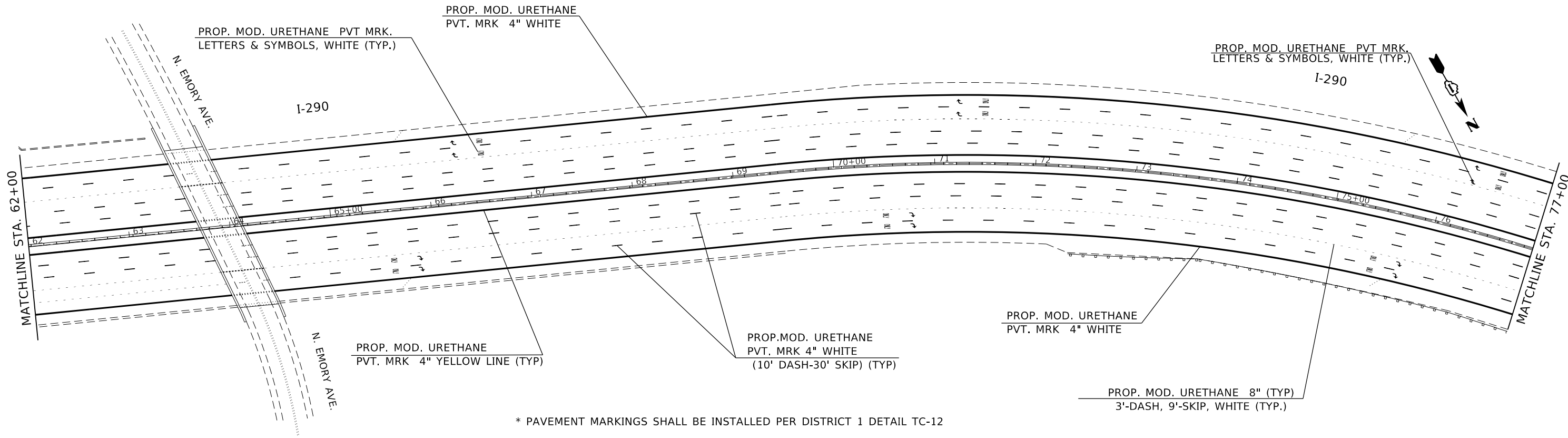
MODEL: Default  
 FILE: \\nrcs-pub\pub\baronm.dwg  
 PROJECT: \\nrcs-pub\pub\baronm.dwg  
 OFFICE: \\nrcs-pub\pub\baronm.dwg  
 DATE: 10/16/2020

USER NAME = sducs	DESIGNED -	REVISED -
PLOT SCALE = 100,0000' / in.	DRAWN -	REVISED -
PLOT DATE = 10/16/2020	CHECKED -	REVISED -
	DATE -	REVISED -

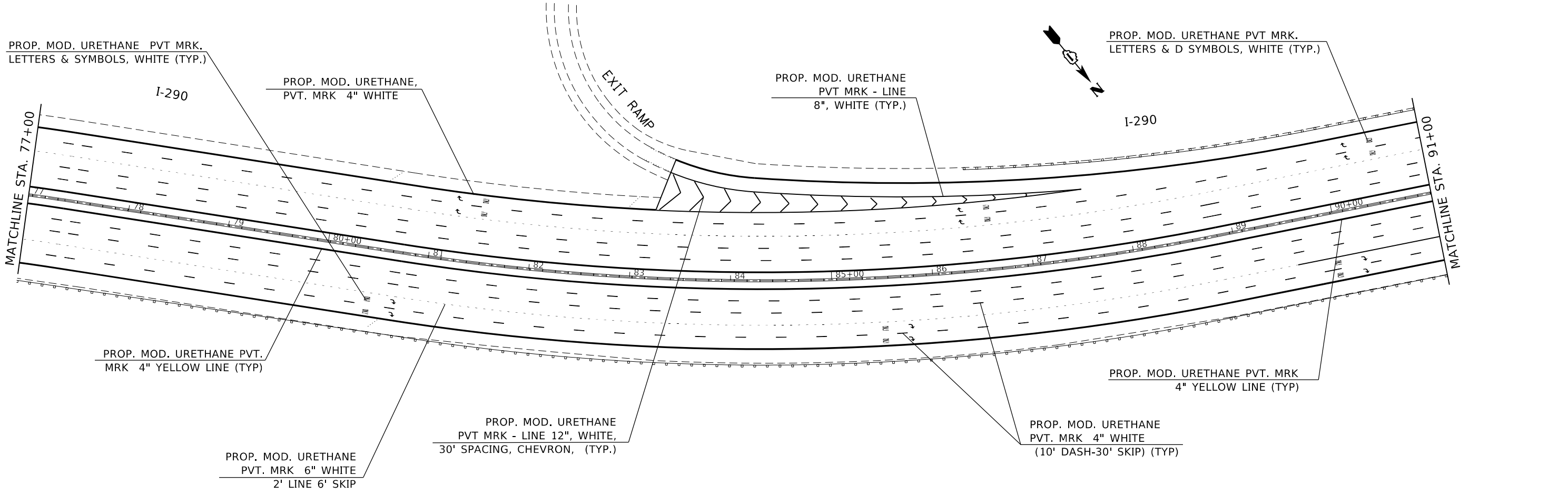
**STATE OF ILLINOIS**  
**DEPARTMENT OF TRANSPORTATION**

<b>ROADWAY PLAN IL I-290</b> <b>(COOK COUNTY LINE TO GRAND AVE)</b>			
SCALE:	SHEET	OF	SHEETS
	STA. 32+00		TO STA. 62+00

F.A.J. RTE.	SECTION	COUNTY	TOTAL SHEETS	SHEET NO.
290	2020-069-1	DUPAGE	17	6
			CONTRACT NO. 62L47	
ILLINOIS FED. AID PROJECT				



\* PAVEMENT MARKINGS SHALL BE INSTALLED PER DISTRICT 1 DETAIL TC-12



MODEL: Default  
 FILE: \\spsc-prod-planningroom.dia.illinois.gov\pww\DOT\Documents\DOT - Offices\District 1\Projects\CD\CDData\Design\146820-sh-1-bn.dgn

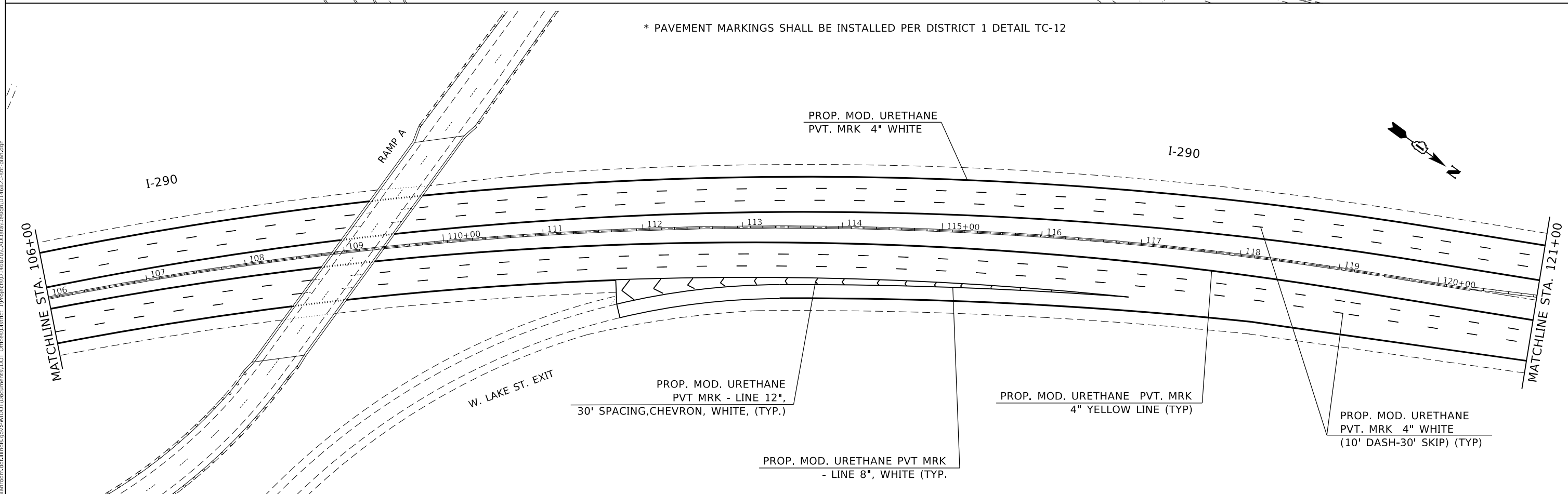
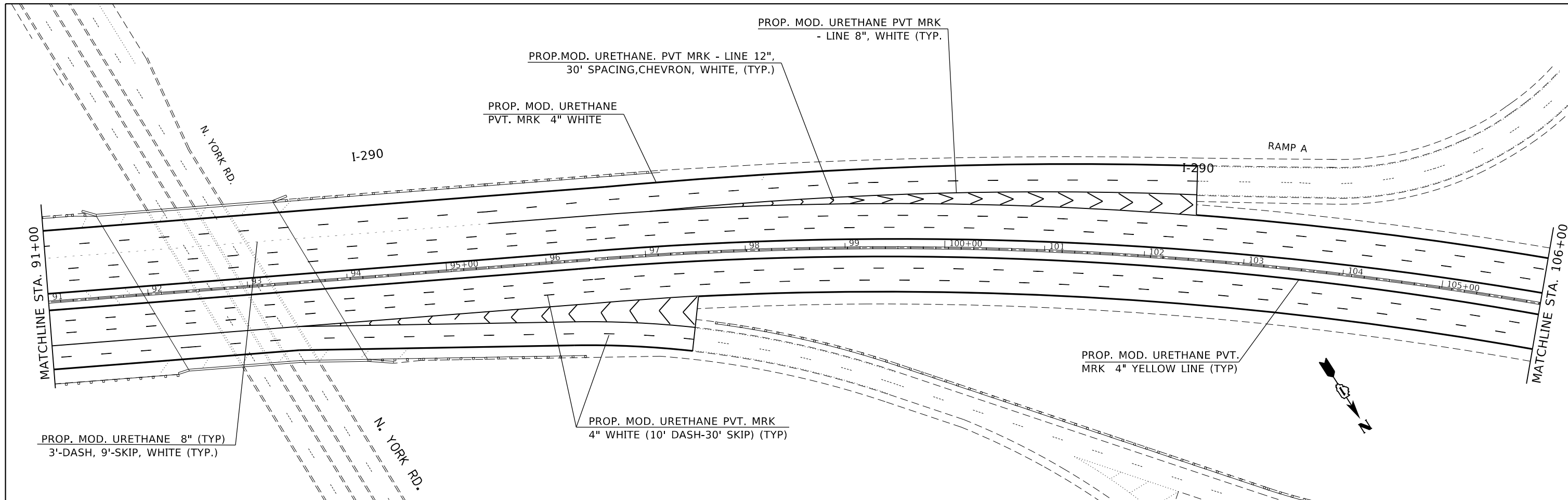
USER NAME = sducs	DESIGNED -	REVISED -
	DRAWN -	REVISED -
PLOT SCALE = 100,0000' / in.	CHECKED -	REVISED -
PLOT DATE = 10/16/2020	DATE -	REVISED -

**STATE OF ILLINOIS  
DEPARTMENT OF TRANSPORTATION**

**ROADWAY PLAN IL I-290  
(COOK COUNTY LINE TO GRAND AVE)**

SCALE: SHEET OF SHEETS STA. 62+00 TO STA. 91+00

F.A.J. RTE.	SECTION	COUNTY	TOTAL SHEETS	SHEET NO.
290	2020-069-1	DUPAGE	17	7
CONTRACT NO. 62L47				
ILLINOIS FED. AID PROJECT				



MODEL: Default  
 FILE: Model: p:\pub\barroom.dwg  
 I:\projects\146820\CADD\Drawings\146820-rt-146820.dwg

USER NAME = sducs	DESIGNED -	REVISED -
	DRAWN -	REVISED -
PLOT SCALE = 100,0000' / in.	CHECKED -	REVISED -
PLOT DATE = 10/16/2020	DATE -	REVISED -

**STATE OF ILLINOIS**  
**DEPARTMENT OF TRANSPORTATION**

**ROADWAY PLAN IL I-290**  
**(COOK COUNTY LINE TO GRAND AVE)**

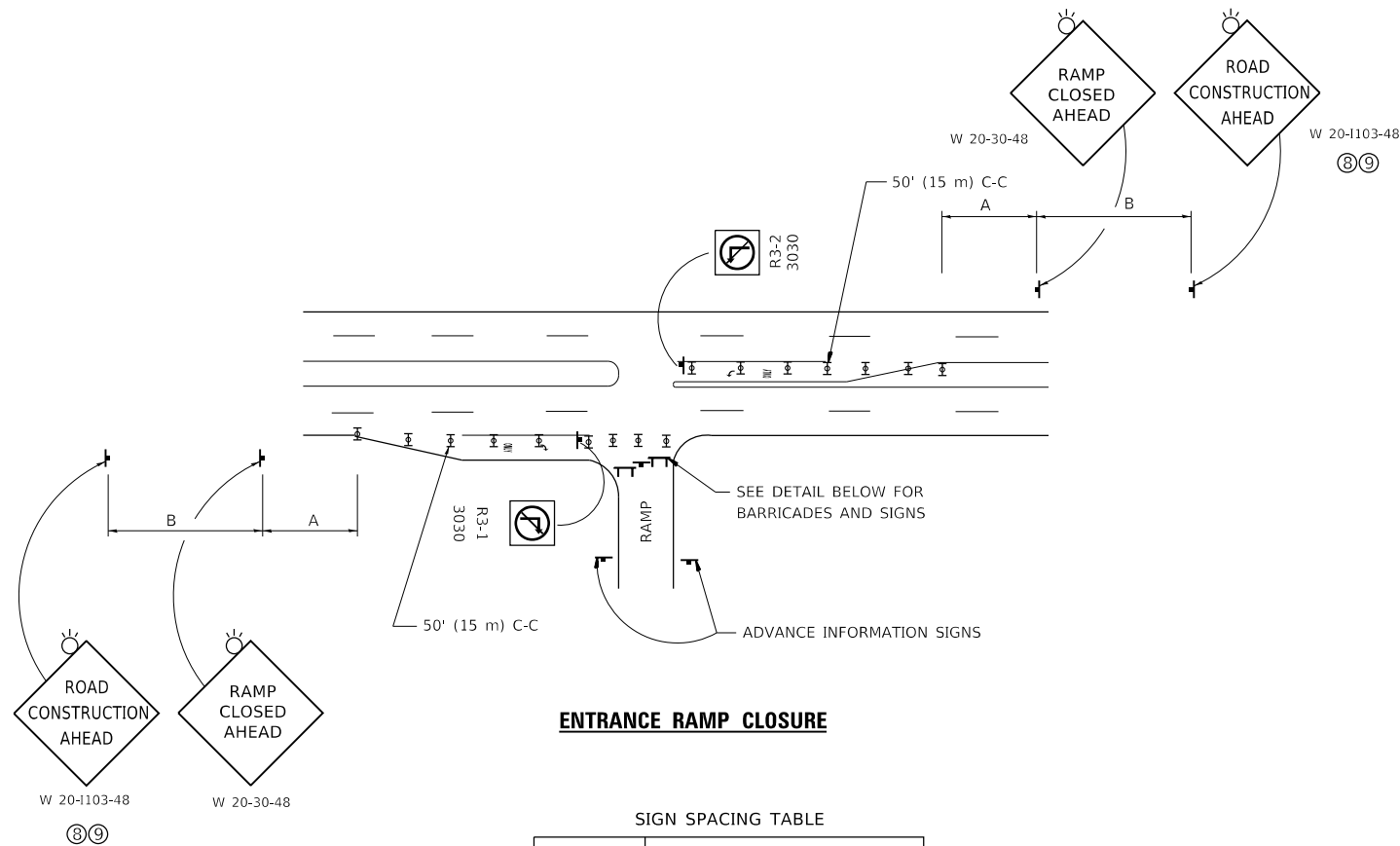
SCALE: SHEET OF SHEETS STA. 91+00 TO STA. 121+00

F.A.J. RTE.	SECTION	COUNTY	TOTAL SHEETS	SHEET NO.
290	2020-069-1	DUPAGE	17	8
			CONTRACT NO. 62L47	
ILLINOIS FED. AID PROJECT				







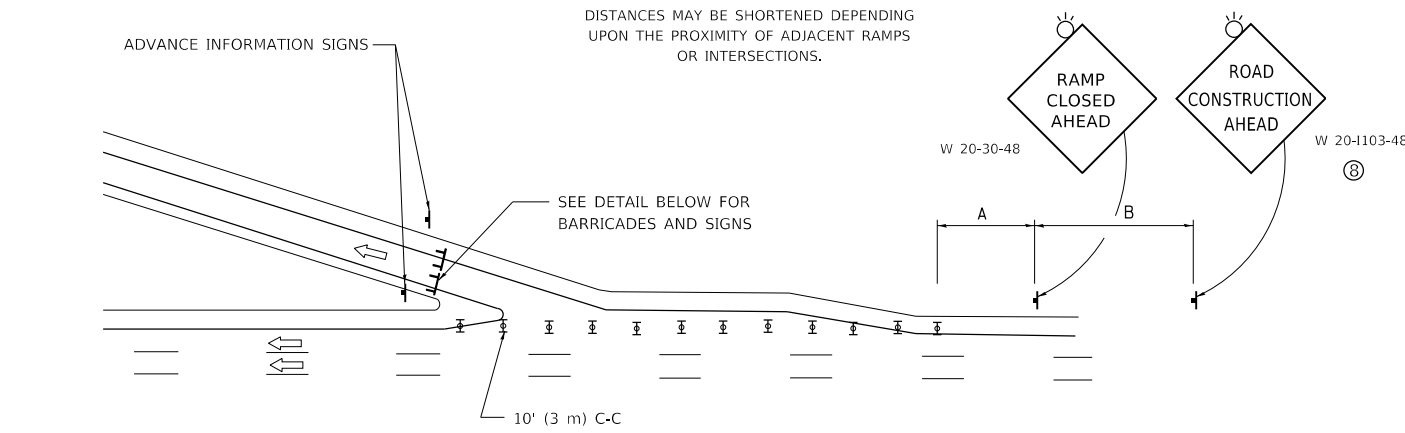


**ENTRANCE RAMP CLOSURE**

SIGN SPACING TABLE

FACILITY	DISTANCE BETWEEN SIGNS	
	A	B
EXPRESSWAY >24 HOURS	1000' (300 m)	1500' (450 m)
EXPRESSWAY ≤24 HOURS	500' (150 m)	500' (150 m)
ARTERIAL 55 MPH	500' (150 m)	500' (150 m)
ARTERIAL 50-45 MPH	350' (100 m)	350' (100 m)
ARTERIAL <45 MPH	200' (60 m)	200' (60 m)

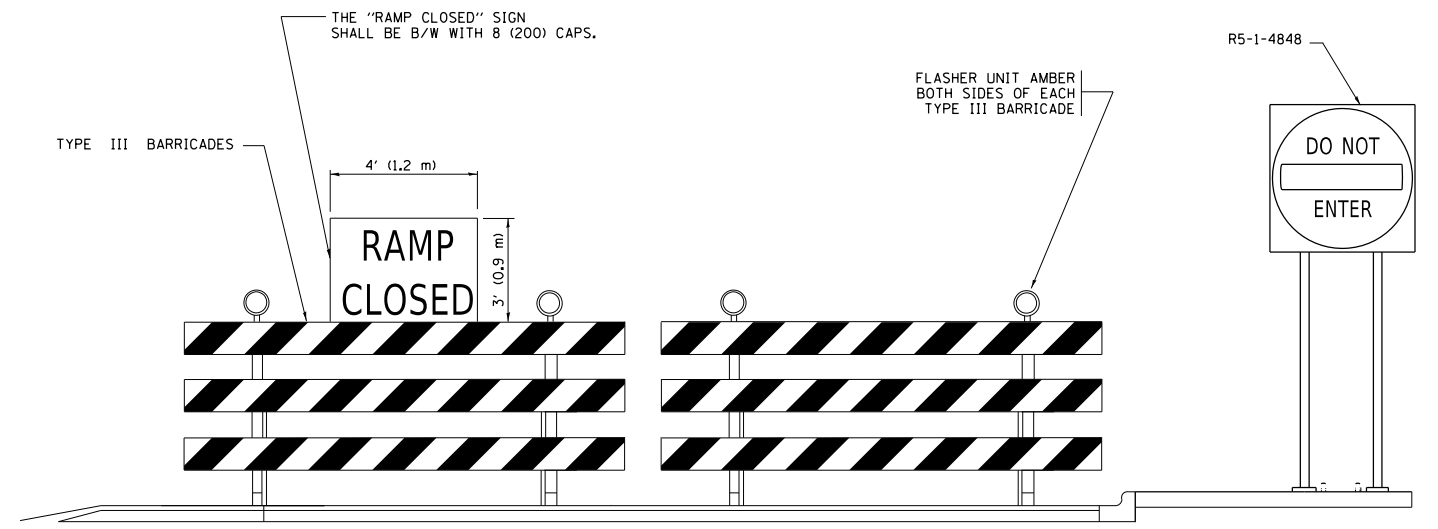
DISTANCES MAY BE SHORTENED DEPENDING UPON THE PROXIMITY OF ADJACENT RAMPS OR INTERSECTIONS.



**EXIT RAMP CLOSURE**

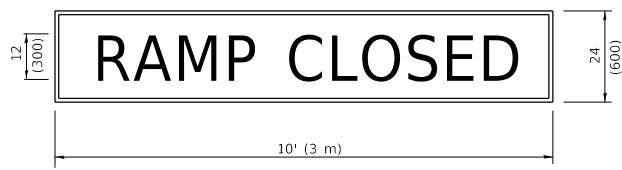
**SYMBOLS**

- ▬ TYPE II BARRICADE OR DRUM
- ▬ TYPE III BARRICADE WITH 2 FLASHING LIGHTS



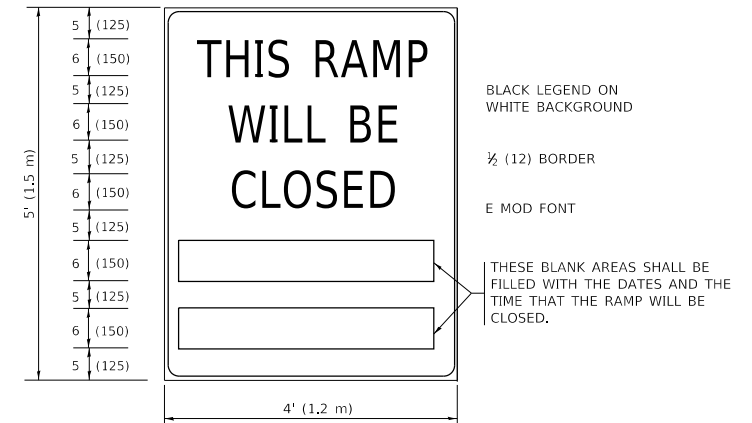
**DETAIL FOR REQUIRED BARRICADES & SIGNS**

**RAMP CLOSURE ADVANCE WARNING SIGN**



BLACK LEGEND ON ORANGE BACKGROUND MOUNTED DIAGONALLY E MOD FONT 1 (25) BORDER  
 THESE SIGNS ARE REQUIRED ON ALL THE EXIT GUIDE SIGNS FOR EXIT RAMPS THAT WILL BE CLOSED FOR MORE THAN FOUR (4) CONSECUTIVE DAYS.

**RAMP CLOSURE ADVANCE INFORMATION SIGN**



THESE SIGNS ARE REQUIRED ON BOTH SIDES OF THE RAMP, MINIMUM OF 1 WEEK IN ADVANCE OF THE CLOSURE.  
 THESE SIGNS SHALL BE FABRICATED AND PAID FOR ACCORDING TO THE TEMPORARY INFORMATION SIGNING SPECIAL PROVISION

**GENERAL NOTES:**

- ① CONES MAY BE SUBSTITUTED FOR DRUMS OR TYPE II BARRICADES DURING DAY OPERATIONS. CONES SHALL BE A MINIMUM OF 28 (700) HIGH.
- ② VERTICAL BARRICADES SHALL NOT BE USED FOR RAMP CLOSURES.
- ③ A FLAGGER SHALL BE POSITIONED AT EACH CLOSED RAMP THAT IS OPEN TO CONSTRUCTION VEHICLES, PRECEDED BY A W20-7 FLAGGER WARNING SIGN.
- ④ ALL ROUTE MARKERS AND TRAILBLAZER ASSEMBLIES WHICH DIRECT MOTORISTS TO A CLOSED ENTRANCE RAMP SHALL BE COVERED WHEN THE RAMP IS CLOSED FOR MORE THAN FOUR (4) DAYS.
- ⑤ THE SIGNING AND BARRICADING WHICH IS REQUIRED BY THIS DETAIL SHALL BE INCLUDED IN THE COST OF TRAFFIC CONTROL AND PROTECTION (EXPRESSWAYS).
- ⑥ AUTHORIZATION FROM THE DISTRICT'S BUREAU OF TRAFFIC IS REQUIRED FOR ALL RAMP CLOSURES.
- ⑦ THE RAMP CLOSURE ADVANCE INFORMATION SIGNS SHALL BE ERECTED IF THE CLOSURE TIME EXCEEDS TWENTY-FOUR (24) HOURS. ADDITIONAL ADVANCE WARNING SIGNS ON EXIT GUIDE SIGNING WILL BE REQUIRED FOR EXIT RAMP CLOSURES THAT EXCEED FOUR (4) DAYS IN LENGTH.
- ⑧ ROAD CONSTRUCTION AHEAD SIGNS MAY BE OMITTED WHEN THIS DETAIL IS USED IN CONJUNCTION WITH OTHER TRAFFIC CONTROL THAT ALREADY INCLUDES A ROAD CONSTRUCTION AHEAD SIGN.
- ⑨ ARTERIAL ROAD CONSTRUCTION AHEAD SIGNS SHALL BE INSTALLED ON THE LEFT SIDE OF TRAFFIC IF THE MEDIAN IS MORE THAN 10 FT WIDE.

ALL DIMENSIONS ARE IN INCHES (MILLIMETERS) UNLESS OTHERWISE SHOWN.

MODEL: Default FILE: \\nas01c.pw.state.il.us\pub\baronm.d\at\illinois.gov\PI\DOT\Documents\DOT\_Offices\Dir\etct\_1\Projects\146820\CaddData\Design\DESIGN.dgn

USER NAME = sducs	DESIGNED - D.W.S.	REVISED - S.P.B._01-07
PLOT SCALE = 100.0000' / in.	CHECKED -	REVISED - S.P.B._12-09
PLOT DATE = 10/16/2020	DATE - 02-83	REVISED - M.D._06-13
		REVISED - M.D._01-18

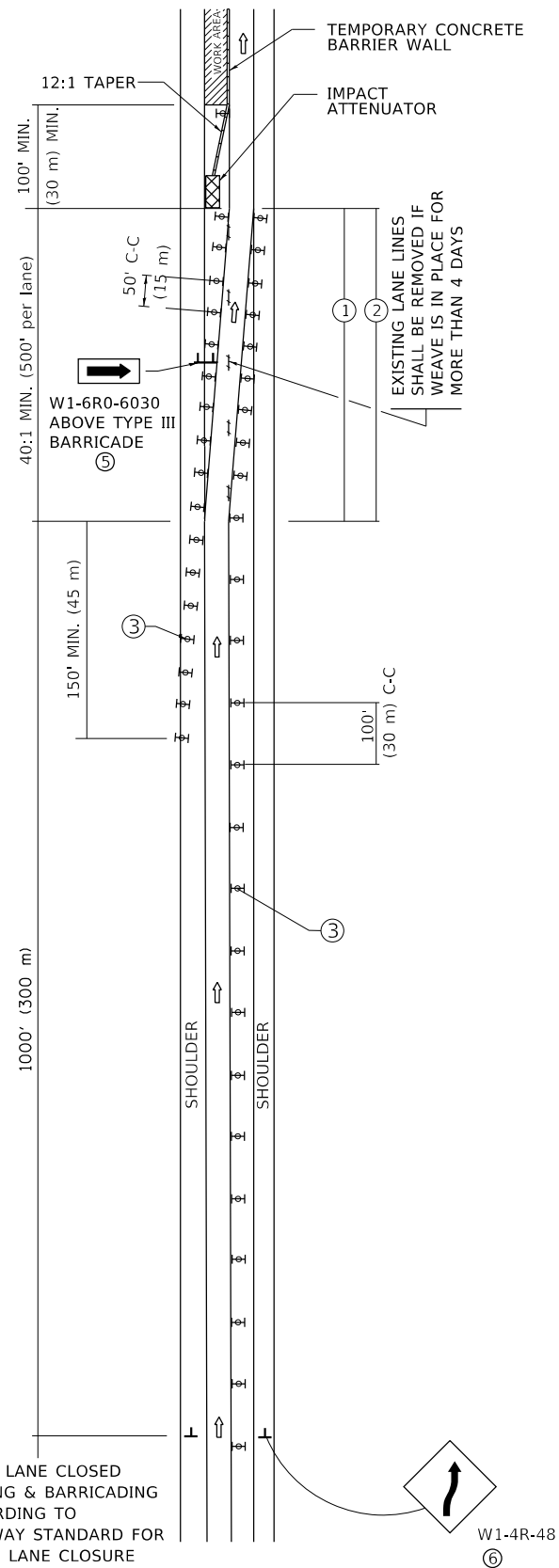
**STATE OF ILLINOIS  
DEPARTMENT OF TRANSPORTATION**

**ENTRANCE\_AND\_EXIT\_RAMP  
CLOSURE\_DETAILS**

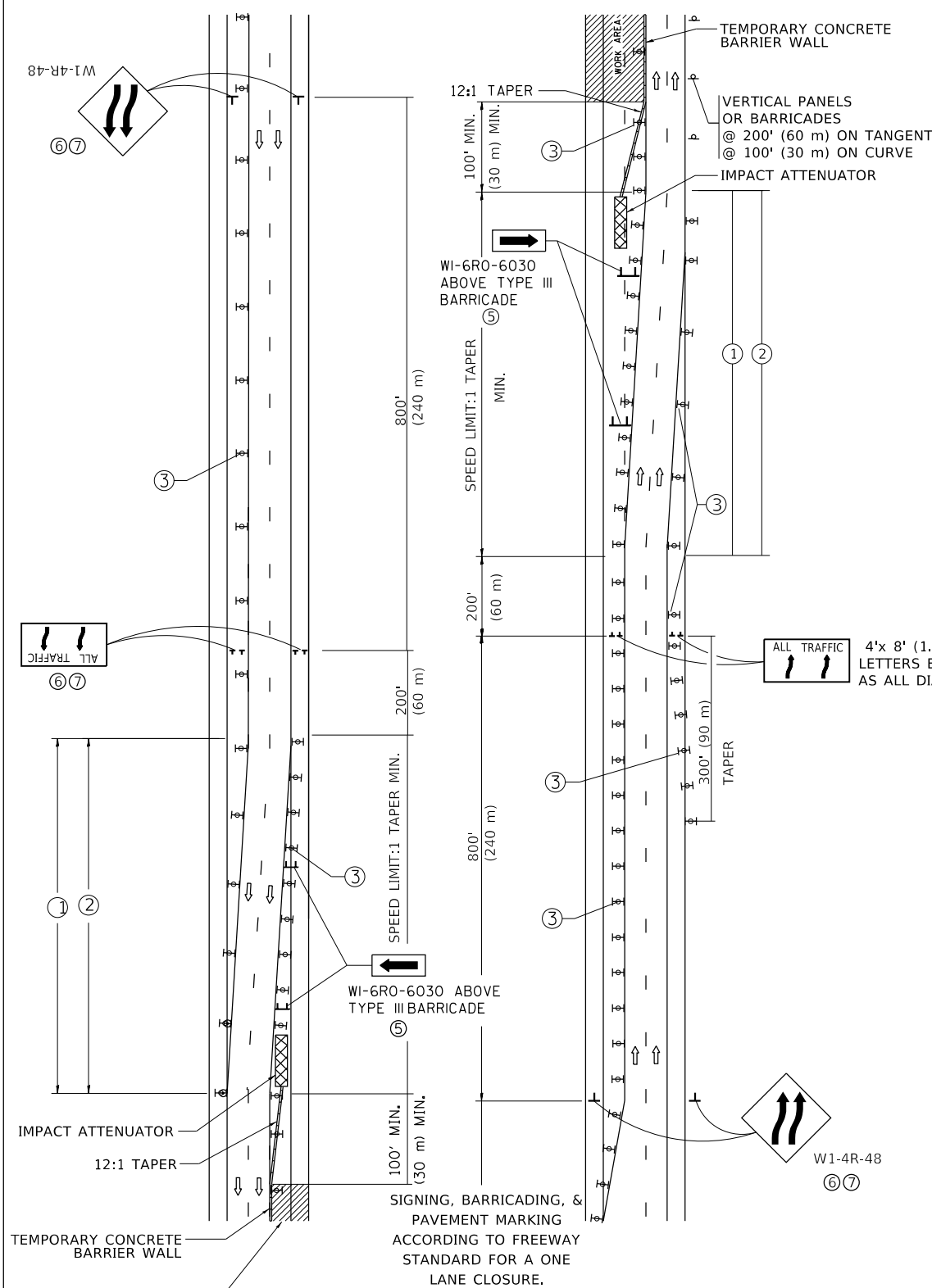
SCALE: NONE SHEET 1 OF 1 SHEETS STA. TO STA.

F.A.I. RTE.	SECTION	COUNTY	TOTAL SHEETS	SHEET NO.
290	2020-069-I	COOK & DUPAGE	17	11
<b>TC-08</b>		CONTRACT NO. 62L47		
ILLINOIS		FED. AID PROJECT		

# SINGLE LANE WEAVE



# MULTI-LANE WEAVE



### GENERAL NOTES:

- ① EXISTING CONFLICTING PAVEMENT MARKING LINES SHALL BE REMOVED. PAVEMENT MARKING REMOVAL SHALL NOT BE REQUIRED FOR SINGLE LANE WEAVES UNDER 4 DAYS IN DURATION.
- ② CONTINUOUS REFLECTIVE TEMPORARY PAVEMENT MARKING TAPE SHALL BE PLACED THROUGHOUT THE TAPER AND FOR 300' (90 m) ALONG SIDE THE WORK AREA WHERE THE CLOSURE TIME IS GREATER THAN FOURTEEN DAYS. THE LEFT EDGE LINE SHALL BE YELLOW AND THE RIGHT EDGE LINE SHALL BE WHITE. FOR MULTI-LANE WEAVES LANE LINES SHALL BE 5 INCH, 10'-30' (3 m-9 m) SKIP DASH, WHITE.
- ③ PLASTIC DRUMS WITH STEADY BURN LIGHTS AT 50' (15 m) C-C SPACING IN TAPERS AND 100' (30 m) C-C SPACING IN TANGENTS.
- ④ ALL SIGNS SHALL BE POST MOUNTED IF THE CLOSURE TIME EXCEEDS FOUR DAYS.
- ⑤ TYPE III BARRICADES MAY BE OMITTED FOR SINGLE-LANE WEAVES UNDER 24-HOURS IN DURATION. W1-6 SIGNS WILL STILL BE REQUIRED. IF THE WIDTH OF OFFSET IS LESS THAN 6' THEN THE TYPE III BARRICADE WITH ATTACHED ARROW SIGN PANEL CAN BE ELIMINATED IN THE TAPER AREAS.
- ⑥ WHEN THE LENGTH OF THE SHIFTED SEGMENT (DISTANCE BETWEEN WEAVE POINTS) IS LESS THAN 1500', DOUBLE REVERSE CURVE SIGNS (W24-1) SHOULD BE USED INSTEAD OF THE REVERSE CURVE (W1-4) SIGNS. ARROWS ON THE 4'X8' "ALL TRAFFIC" SIGNS SHALL BE THE SAME SHAPE.
- ⑦ THE NUMBER OF ARROWS ON THESE SIGNS SHALL MATCH THE NUMBER OF LANES OPEN TO TRAFFIC.

### SYMBOLS

- DIRECTION OF TRAFFIC
- WORK AREA
- SIGN ON PORTABLE OR PERMANENT SUPPORT
- TYPE II BARRICADE OR DRUM WITH MONO-DIRECTIONAL STEADY BURNING LIGHT
- TEMPORARY CONCRETE BARRIER WALL
- IMPACT ATTENUATOR
- W1-4R-48
- W24-1-48

ALL DIMENSIONS ARE IN INCHES (MILLIMETERS) UNLESS OTHERWISE SHOWN

MODEL: Default  
FILE: \\nashville.pw.org\pub\baronm.d\at\illinois.gov\PIWDOT\Documents\DOT\_Offices\District\_1\Projects\146820\CaddData\Design\DF54.dgn

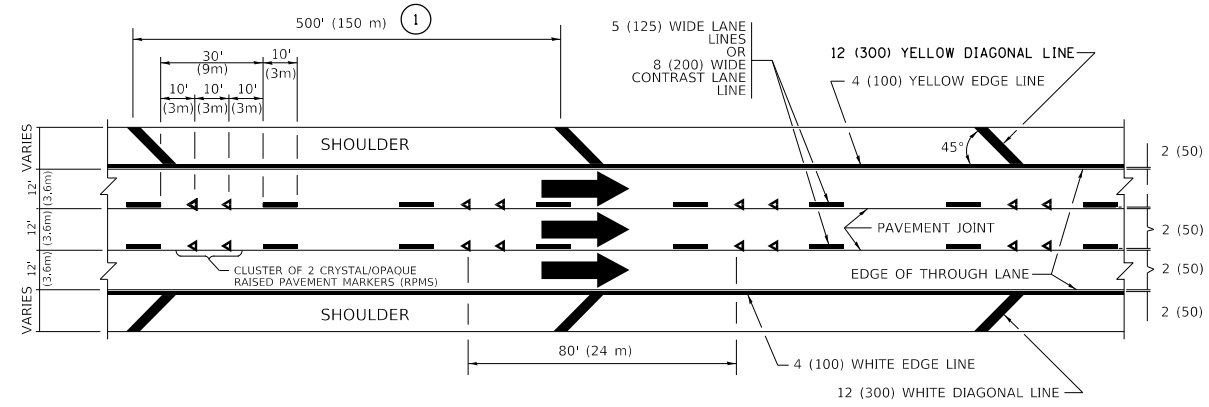
USER NAME = sducs	DESIGNED - D.W.S.	REVISED - J.A.F. 02-06
	DRAWN -	REVISED - S.P.B. 01-07
PLOT SCALE = 100,0000' / in.	CHECKED -	REVISED - S.P.B. 12-09
PLOT DATE = 10/16/2020	DATE - 02-87	REVISED - M.D. 06-13

STATE OF ILLINOIS  
DEPARTMENT OF TRANSPORTATION

TRAFFIC CONTROL DETAILS FOR  
FREEWAY SINGLE & MULTI-LANE WEAVE

SCALE: NONE SHEET 1 OF 1 SHEETS STA. TO STA.

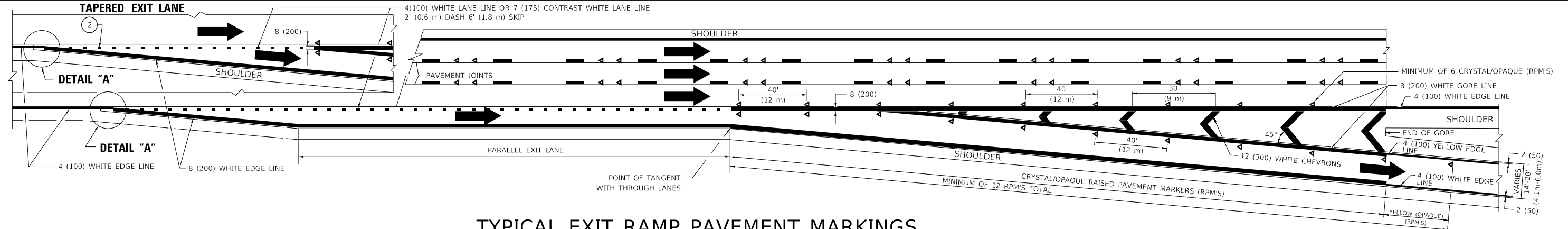
F.A.I. RTE.	SECTION	COUNTY	TOTAL SHEETS	SHEET NO.
290	2020-069-I	COOK & DUPAGE	17	12
TC-09		CONTRACT NO. 62L47		
ILLINOIS FED. AID PROJECT				



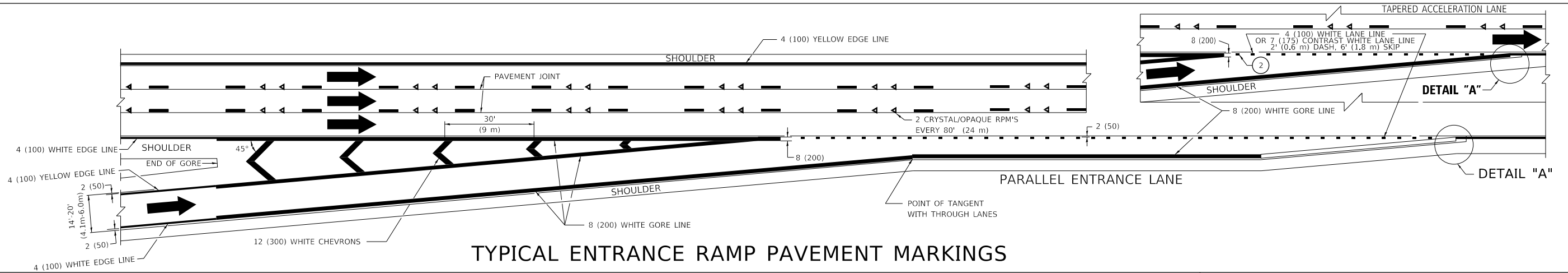
TYPICAL EDGE LINES & LANE LINES

**PAVEMENT MARKING MATERIALS**

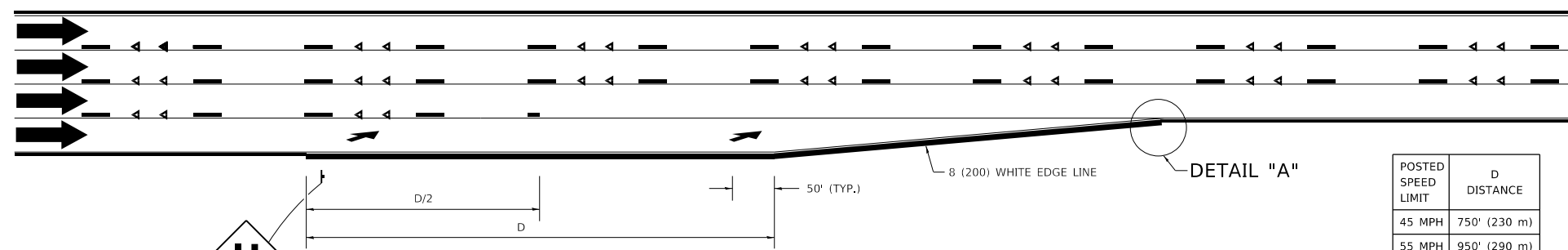
1. THERMOPLASTIC PAVEMENT MARKING LINE SHALL BE USED FOR ALL EDGE LINES, GORE LINES, AND DIAGONAL LINES ON HMA PAVEMENTS.
2. POLYUREA OR MODIFIED URETHANE PAVEMENT MARKING LINE SHALL BE USED FOR ALL EDGE LINES, GORE LINES, AND DIAGONAL LINES ON PCC PAVEMENTS.
3. PREFORMED PLASTIC PAVEMENT MARKING LINE TYPE B, INLAID OR GROOVE IN, SHALL BE USED FOR ALL LANE LINES ON HMA PAVEMENTS.
4. CONTRAST PREFORMED PLASTIC PAVEMENT MARKING LINE TYPE B, GROOVE IN, SHALL BE USED FOR ALL LANE LINES ON PCC PAVEMENT.



TYPICAL EXIT RAMP PAVEMENT MARKINGS

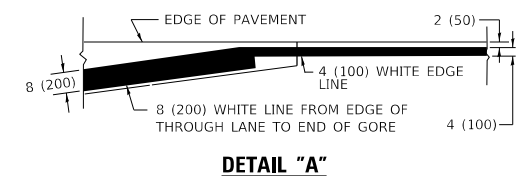


TYPICAL ENTRANCE RAMP PAVEMENT MARKINGS



LANE REDUCTION PAVEMENT MARKINGS

POSTED SPEED LIMIT	D DISTANCE
45 MPH	750' (230 m)
55 MPH	950' (290 m)
65 MPH	1200' (365 m)



**NOTES:**

- 1 THE DIAGONAL LINES SHALL BE SPACED AT 40' (12 m) C-C ACROSS ALL STRUCTURES WHICH ARE 500' (150 m) OR LESS IN LENGTH. THE DIAGONAL LINES ARE NOT REQUIRED ON SHOULDERS WHICH ARE 6' (1.8 m) OR LESS IN WIDTH.
- 2 4" (2' DASH, 6' SKIP) MARKING ON TAPERED ENTRANCE AND EXIT RAMP SHALL BE OMITTED ON TANGENT SECTIONS.

MODEL: Default  
FILE: \\hpc\p\pub\hpc\p\pub\dot\Documents\DOT - Offices\Dir\ctc - 1\Projects\1468270\CADD\Drawings\Design\DRS\4.dgn

USER NAME = souscs	DESIGNED - D.W.S.	REVISED - S.P.B. 01-07
PLOT SCALE = 100.0000' / in.	CHECKED -	REVISED - S.P.B. 01-10
PLOT DATE = 10/16/2020	DATE - 01-90	REVISED - M.D. 05-13
		REVISED - M.D. 09-17

STATE OF ILLINOIS  
DEPARTMENT OF TRANSPORTATION

MULTI-LANE FREEWAY  
PAVEMENT MARKING DETAILS

SCALE: NONE SHEET 1 OF 2 SHEETS STA. TO STA.

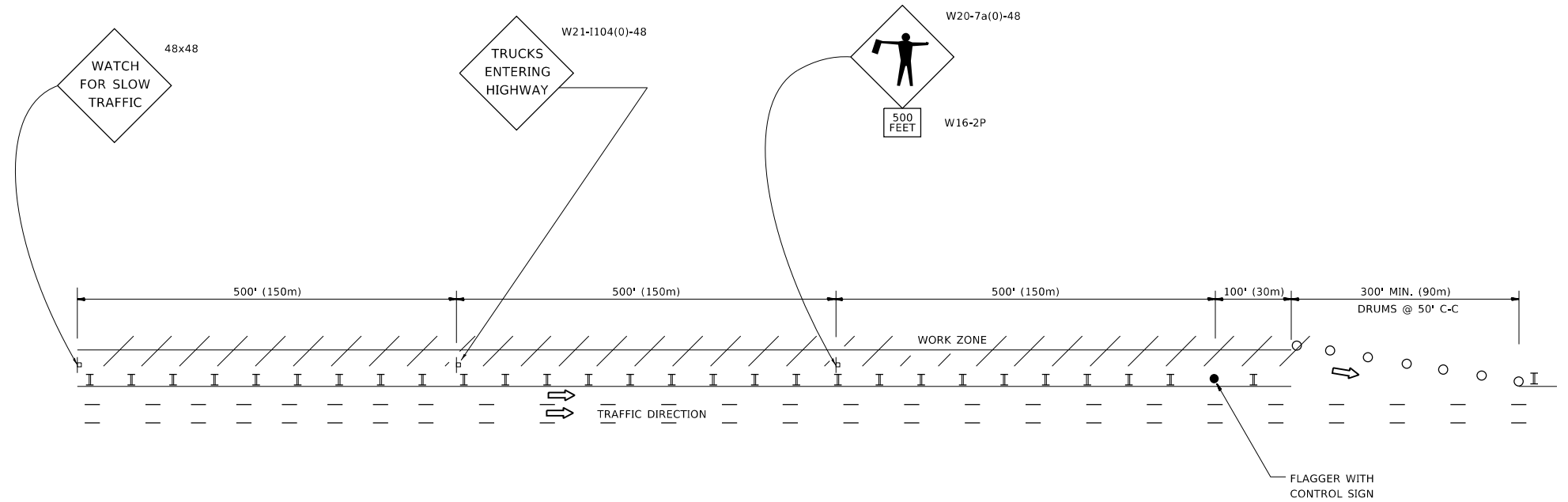
F.A.I. RTE.	SECTION	COUNTY	TOTAL SHEETS	SHEET NO.
290	2020-069-I	COOK & DUPAGE	17	13
TC-12			CONTRACT NO. 62L47	
ILLINOIS FED. AID PROJECT				



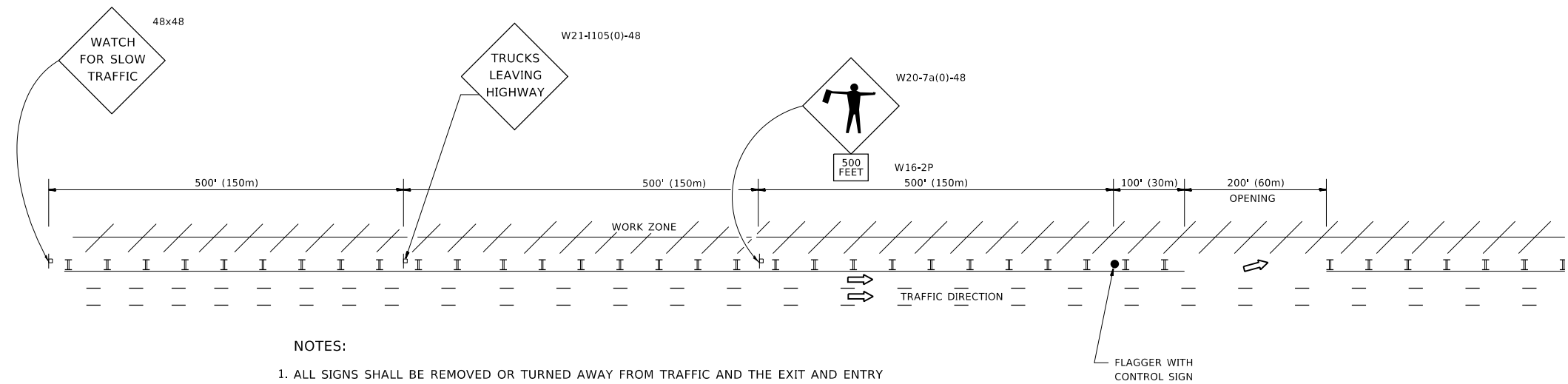


# SIGNING FOR FLAGGING OPERATIONS AT WORK ZONE OPENINGS

## WORK ZONE EXIT OPENING



## WORK ZONE ENTRY OPENING



### NOTES:

1. ALL SIGNS SHALL BE REMOVED OR TURNED AWAY FROM TRAFFIC AND THE EXIT AND ENTRY OPENINGS SHALL BE CLOSED WHEN THE FLAGGING OPERATION CEASES. NON OPERATING EQUIPMENT SHALL COMPLY WITH ARTICLE 701.11
2. WORK ZONE OPENINGS SHALL BE A MINIMUM OF ONE HALF MILE APART AND A MINIMUM OF ONE QUARTER MILE FROM ALL ENTRANCE AND EXIT RAMP.
3. EXITING THE WORK ZONE AT ANY PLACE OTHER THAN AT A WORK ZONE EXIT OPENING WILL BE PROHIBITED.
4. ALL VEHICLES SHALL ENTER THE WORK ZONE AT ENTRY OPENINGS, USING THEIR TURN SIGNALS TO WARN MOTORISTS
5. FLAGGERS SHALL NOT STOP TRAFFIC OR DIRECT TRAFFIC INTO AN ADJACENT LANE.

ALL DIMENSIONS ARE IN INCHES (MILLIMETERS) UNLESS OTHERWISE SHOWN

MODEL: Default  
FILE: \\nashville-prod\planroom\dot\illinois.gov\PWIDOT\Documents\DOT\_Offices\Ibirt\1\Project\146820\CADD\Design\Design\DESIGN.dgn

USER NAME = sducs	DESIGNED -	REVISED - J.A.F. 02-06
	DRAWN -	REVISED - S.P.B. 01-07
PLOT SCALE = 100.0000' / in.	CHECKED -	REVISED - S.P.B. 12-09
PLOT DATE = 10/16/2020	DATE -	REVISED - M.D.06-13

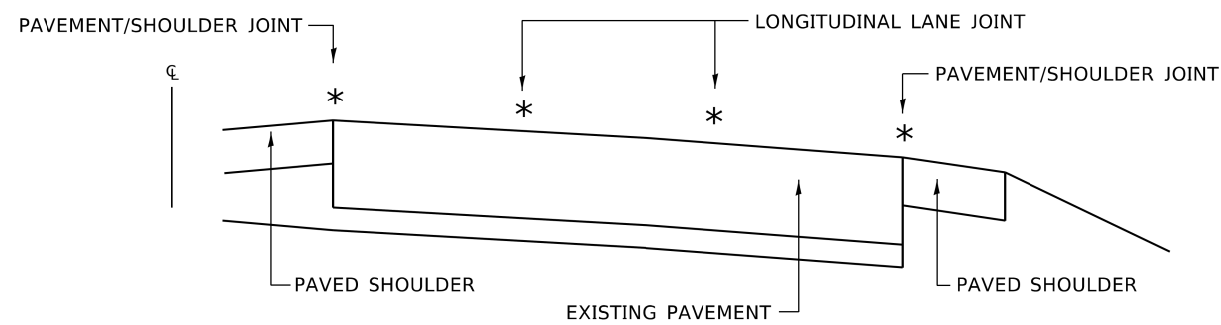
**STATE OF ILLINOIS  
DEPARTMENT OF TRANSPORTATION**

**FREEWAY /EXPRESSWAY SIGNING FOR FLAGGING OPERATIONS  
AT WORK ZONE OPENINGS ON FREEWAYS /EXPRESSWAYS**

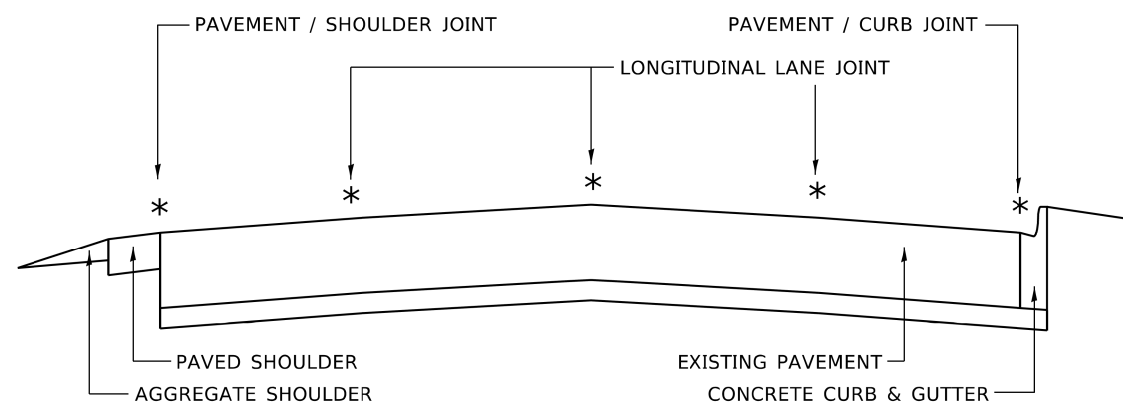
SCALE: NONE SHEET 1 OF 1 SHEETS STA. TO STA.

F.A.I. RTE.	SECTION	COUNTY	TOTAL SHEETS	SHEET NO.
290	2020-069-I	COOK & DUPAGE	17	16
<b>TC-18</b>			CONTRACT NO. 62L47	
ILLINOIS FED. AID PROJECT				

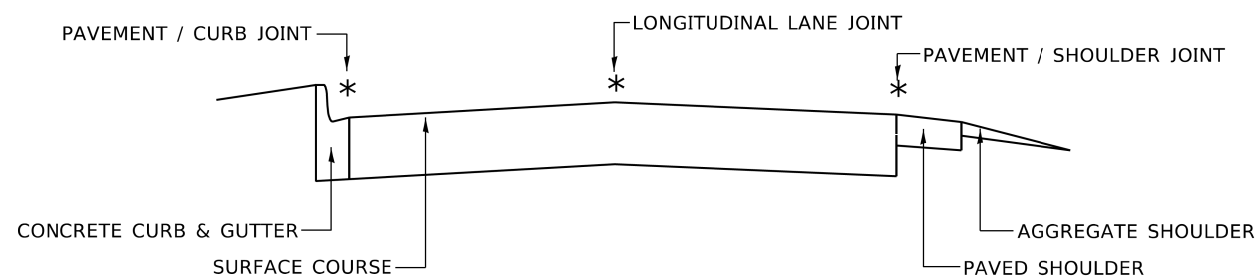




**MULTI-LANE DIVIDED PAVEMENT**



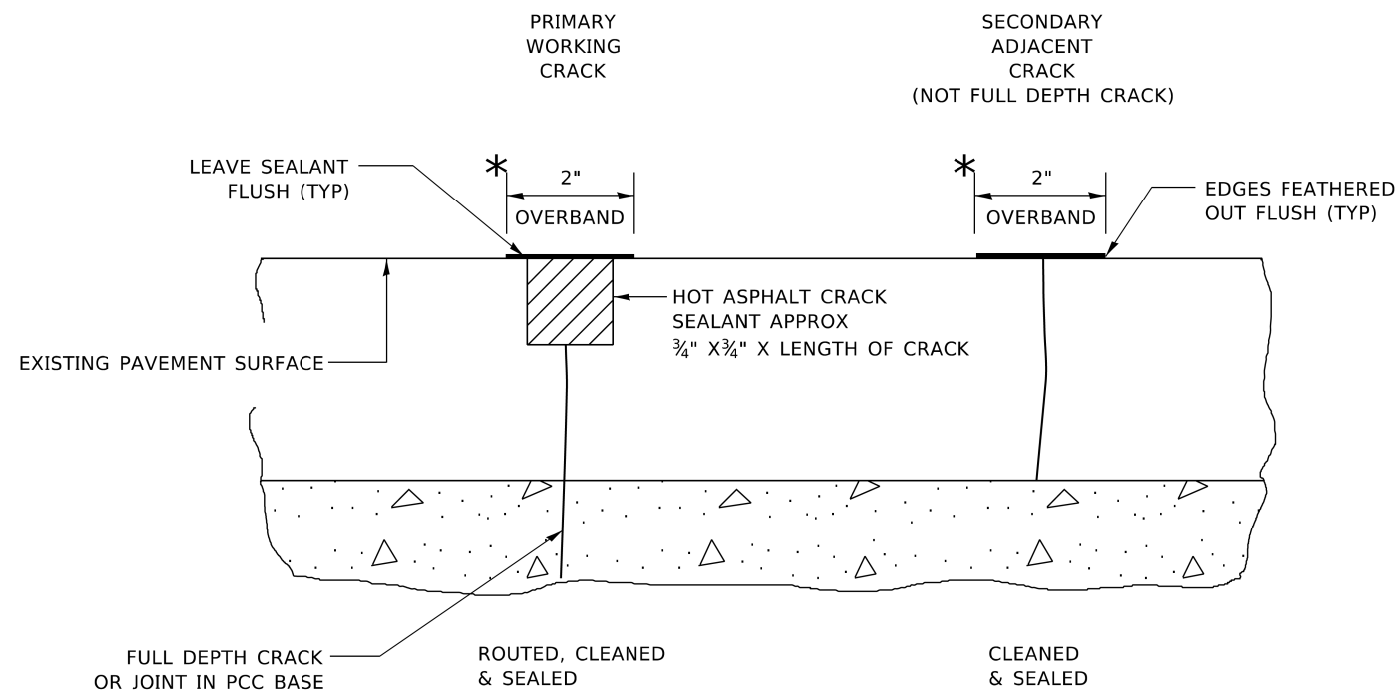
**MULTI-LANE UNDIVIDED PAVEMENT**



**TWO-LANE PAVEMENT**

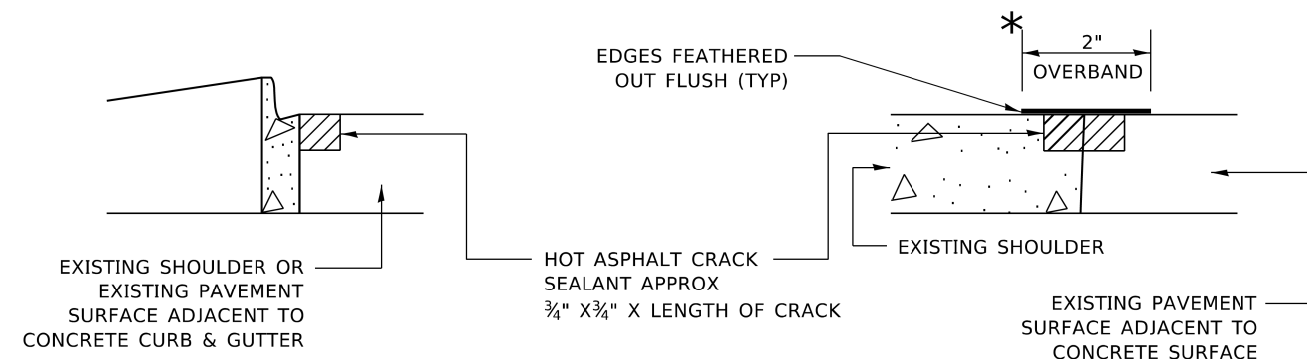
\* PROPOSED LONGITUDINAL CRACK ROUTING (PAVEMENT) & CRACK FILLING LOCATIONS

**GENERAL EXISTING TYPICAL SECTIONS  
(APPLIES TO HMA AND PCC PAVEMENTS)**



\* IN ALL LOCATIONS WHERE THE LONGITUDINAL CRACK CONFLICTS WITH EXISTING PAVEMENT MARKINGS (EITHER EDGE LINE OR LANE LINE) THE CRACK SHALL BE ROUTED & THE RESULTING RESERVOIR FILLED WITH SEALANT. ALL DAMAGES TO EXISTING RAISED REFLECTIVE PAVEMENT MARKERS SHALL BE REPLACED AT THE EXPENSE OF THE CONTRACTOR. ALL EXISTING PAVEMENT MARKINGS WITHIN THE PROJECT LIMITS SHALL BE RESTORED WITH MODIFIED URETHANE PAVEMENT MARKINGS.

**LONGITUDINAL JOINT**



**CRACK & JOINT SEALING DETAIL**

MODEL: Default  
FILE: M:\BTE\_P\pub\barcom.dwt, illinois.gov\PIWDOT\Documents\DOT\_Offices\District\_1\Projects\Dist5\272311\CAD\Drawn\CAD\sheet\3011.dgn

USER NAME = leysa	DESIGNED - F. Aqueel / A. Midy	REVISED -
PLOT SCALE = 100.0000' / in.	DRAWN -	REVISED -
PLOT DATE = 10/7/2020	CHECKED -	REVISED -
	DATE - 10/08/2020	REVISED -

**STATE OF ILLINOIS  
DEPARTMENT OF TRANSPORTATION**

**CRACK & JOINT SEALING DETAIL (PD-11)**

SCALE: SHEET OF SHEETS STA. TO STA.

F.A.I. RTE.	SECTION	COUNTY	TOTAL SHEETS	SHEET NO.
290	2020-069-I	COOK & DUPAGE	17	17
CONTRACT NO. 62L47				
ILLINOIS FED. AID PROJECT				