

F.A.I. RTE.	SECTION	COUNTY	TOTAL SHEETS	SHEET NO.
90/94	2005-0341	COOK	41	1
60A05			42	

**INDEX OF SHEETS**

SHEET	DESCRIPTION
1	COVER SHEET / INDEX / HIGHWAY STANDARDS
2	GENERAL NOTES
3	SUMMARY OF QUANTITIES
4-8	ALIGNMENT PLANS, SURVEY TIES AND CONTROL POINTS
9-35	EXISTING AND PROPOSED FENCE PLANS
36-38A	STRUCTURAL DETAILS
39	TC-10 DISTRICT 1, TRAFFIC CONTROL AND PROTECTION FOR SIDE ROADS, INTERSECTIONS & DRIVEWAYS
40	TC-17 DISTRICT 1, TRAFFIC CONTROL DETAILS FOR FREEWAY SHOULDER CLOSURES PARTIAL RAMP CLOSURES
41	TC-22 DISTRICT 1, ARTERIAL ROAD INFORMATION SIGN

**IDOT HIGHWAY STANDARDS**

STANDARD	DESCRIPTION
000001-05	STANDARD SYMBOLS, ABBREVIATIONS, AND PATTERNS
001006	DECIMAL OF AN INCH AND OF A FOOT
664001-02	CHAIN LINK FENCE
701601-00	URBAN LANE CLOSURE, MULTILANE, 1W OR 2W WITH NONTRAVERSABLE MEDIAN
701701-00	URBAN LANE CLOSURE, MULTILANE INTERSECTION
701801-04	LANE CLOSURE, MULTILANE, 1W OR 2W, CROSSWALK OR SIDEWALK CLOSURE
701901-01	TRAFFIC CONTROL DEVICES

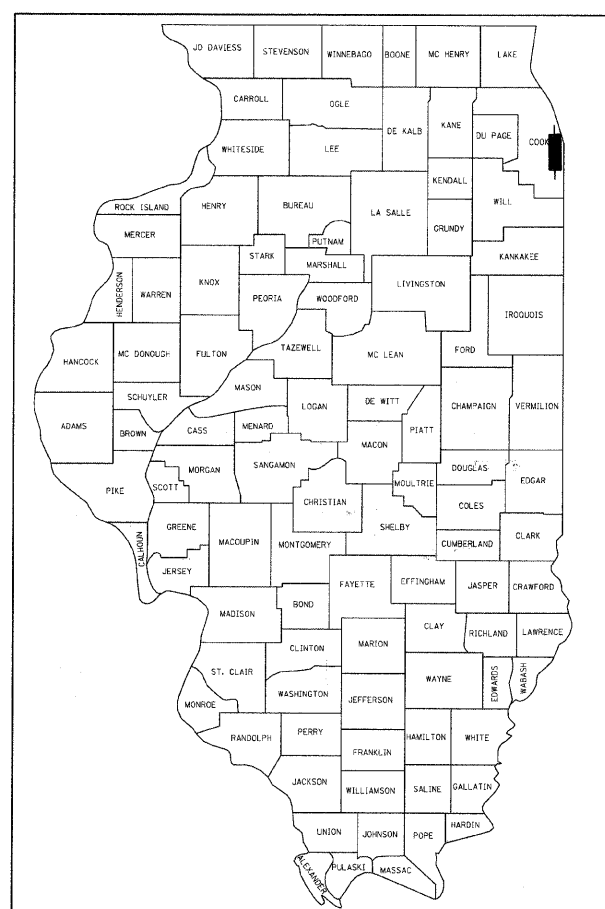
**STATE OF ILLINOIS  
DEPARTMENT OF TRANSPORTATION  
DIVISION OF HIGHWAYS**

**PLANS FOR PROPOSED  
FEDERAL AID HIGHWAY**

**F.A.I. ROUTE 90/94 (DAN RYAN EXPRESSWAY)  
SECTION 2005-0341**

**SOUTHBOUND FENCE AND GATES  
(47TH ST TO 31ST ST)**

**COOK COUNTY  
C-91-263-05**



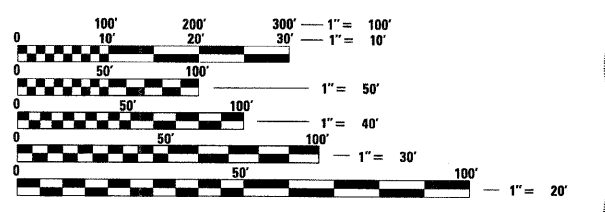
LOCATION OF SECTION INDICATED THUS: —

**PROJECT LOCATED IN CITY OF CHICAGO**

**DESIGN DESIGNATION**

WENTWORTH AVE: 8275 (20) URBAN COLLECTOR	ADT (2020)	DESIGN SPEED	POSTED SPEED
FRONTAGE ROAD: WENTWORTH AVE	11,000	30	25

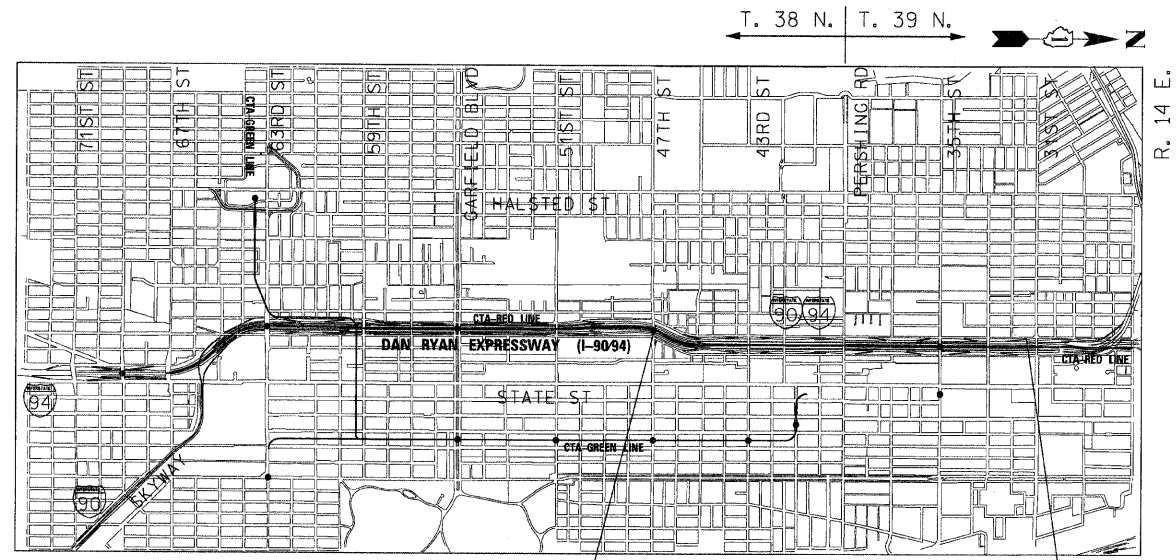
**DESIGN NUMBER  
D-91-417-01**



FULL SIZE PLANS HAVE BEEN PREPARED USING STANDARD ENGINEERING SCALES. REDUCED SIZED PLANS WILL NOT CONFORM TO STANDARD SCALES. IN MAKING MEASUREMENTS ON REDUCED PLANS, THE ABOVE SCALES MAY BE USED.

**BEFORE EXCAVATING CALL:  
CHICAGO UTILITY ALERT NETWORK  
(312) 744-7000**

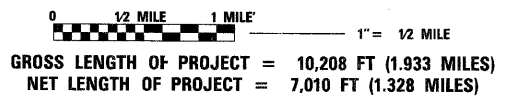
**CONTRACT NO. 60A05**



**PROJECT BEGINS  
RAMP 47A  
STA 5074 + 06**

**PROJECT ENDS  
SB WENTWORTH  
STA 148 + 88**

**LOCATION MAP**



**REGISTERED PROFESSIONAL ENGINEER OF ILLINOIS**  
 SIGNATURE: *[Signature]*  
 DATE: Oct. 21, 2008  
 EXPIRES: Nov. 30, 2009

**REGISTERED PROFESSIONAL ENGINEER OF ILLINOIS**  
 SIGNATURE: *[Signature]*  
 DATE: Oct. 21, 2008  
 EXPIRES: Nov. 30, 2009

**REGISTERED STRUCTURAL ENGINEER OF ILLINOIS**  
 SIGNATURE: *[Signature]*  
 DATE: Oct. 21, 2008  
 EXPIRES: Nov. 30, 2010

STATE OF ILLINOIS  
DEPARTMENT OF TRANSPORTATION  
DIVISION OF HIGHWAYS

SUBMITTED OCTOBER 23, 2008

*[Signature]*  
DEPUTY DIRECTOR OF HIGHWAYS, REGION ENGINEER

20

ENGINEER OF DESIGN AND ENVIRONMENT

20

DIRECTOR OF HIGHWAYS, CHIEF ENGINEER

**PRINTED BY THE AUTHORITY  
OF THE STATE OF ILLINOIS**

BOWMAN, BARRETT & ASSOCIATES INC.  
CONSULTING ENGINEERS  
Chicago, Illinois  
312.228.0100  
www.bbandainc.com

DISTRICT ONE DESIGN/CONSULTANT SERVICES PROJECT MANAGER  
RAJENDRA SHAH (847) 705-4555

N:\660\cadd\civil\371\SHEETS\660\_37COVER.dgn