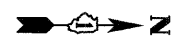
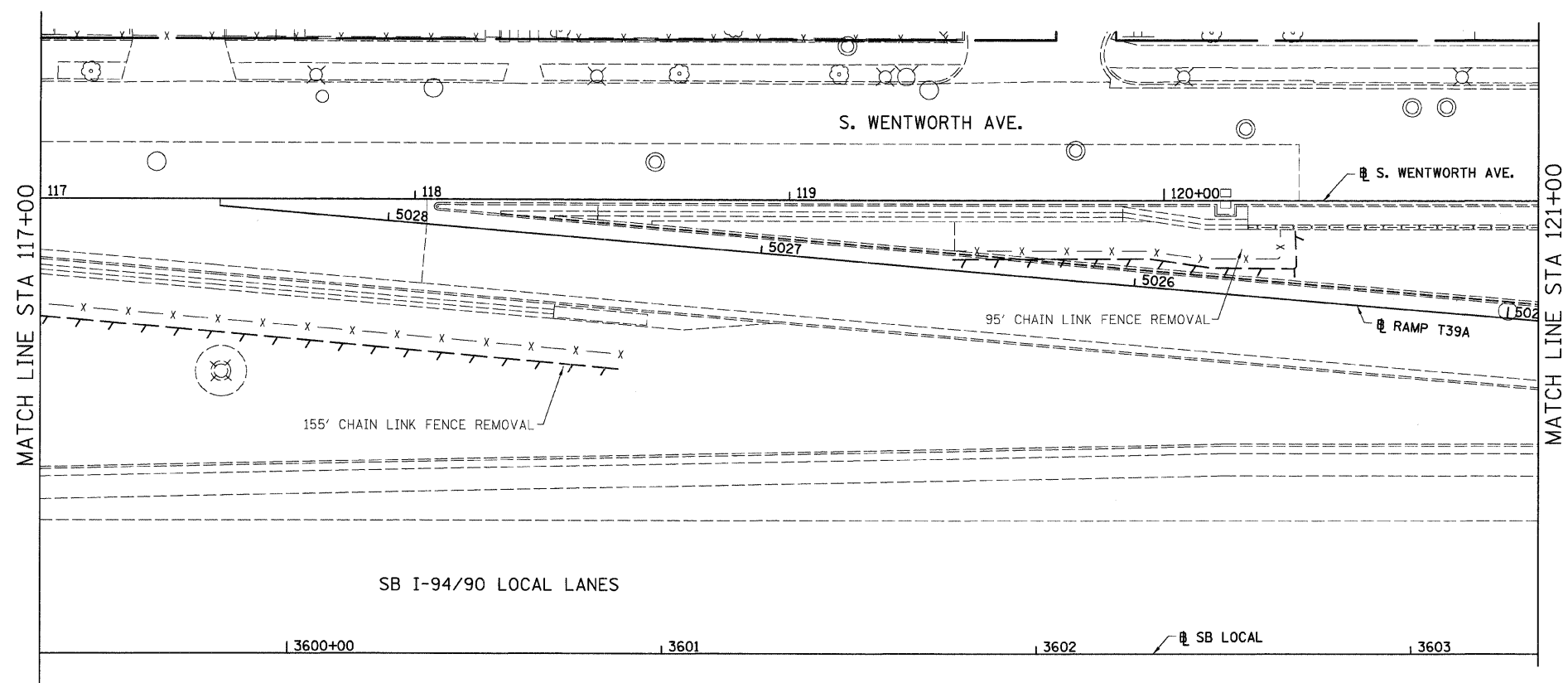


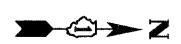
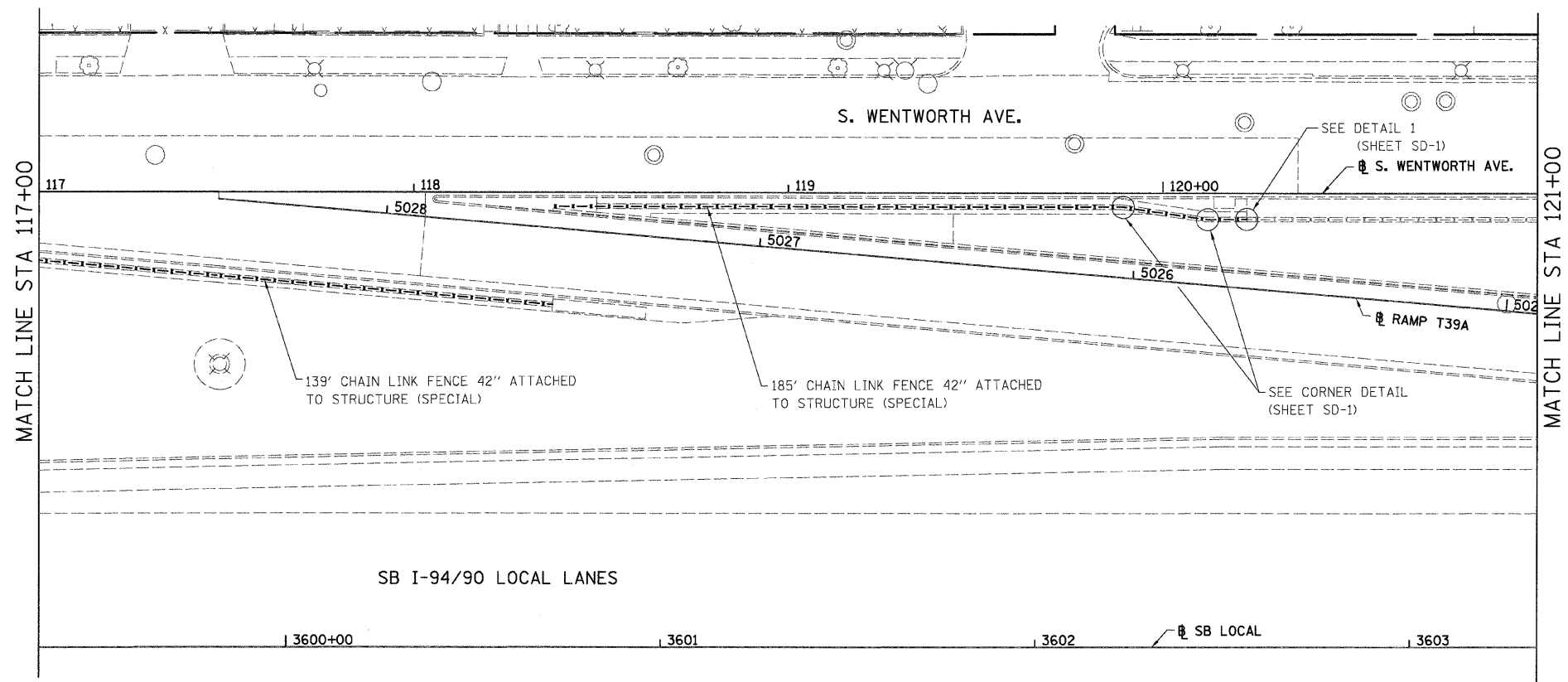
F.A.I.	SECTION	COUNTY	TOTAL SHEETS	SHEET NO.
94/90	2005-0341	COOK	41	27
STA.		TO STA.		
FED. ROAD DIST. NO.		ILLINOIS	FED. AID PROJECT	

60A05

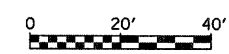


LEGEND:  
 LINEAR REMOVALS

EXISTING CONDITIONS AND REMOVAL  
 PROPOSED IMPROVEMENTS



NOTES:  
 1. SEE DETAIL FOR CHAIN LINK FENCE, 42" ATTACHED TO STRUCTURE (SPECIAL).



REVISIONS	
NAME	DATE
REVISED	11/5/08

ILLINOIS DEPARTMENT OF TRANSPORTATION  
 F.A.I. 94/90 (DAN RYAN EXPRESSWAY)  
 SOUTHBOUND FENCE AND GATES (47TH ST TO 31ST ST)  
**EXISTING AND PROPOSED  
 FENCE PLANS**  
 SCALE: 1"=20'  
 DATE: 10/23/08  
 DRAWN BY: JDC  
 CHECKED BY: DDM

BOWMAN, BARRETT & ASSOCIATES INC.  
 CONSULTING ENGINEERS  
 Chicago, Illinois  
 312.228.0100  
 www.bbainc.com

PL-19  
 5:08:57 PM  
 11/5/2008