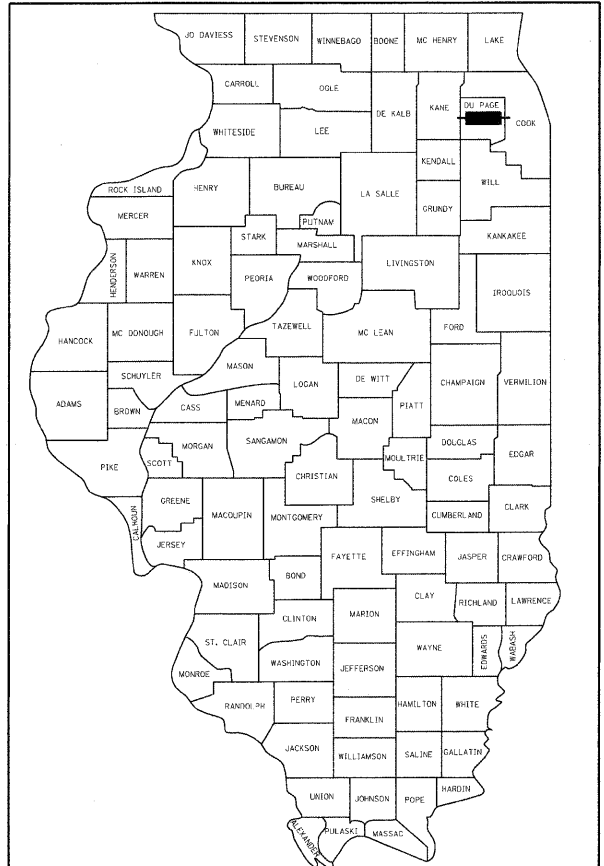


87+4=91

F.A.P. RTE.	SECTION	COUNTY	TOTAL SHEETS	SHEET NO.
870	533 X-B-R-1	DUPAGE	87	1

CONTRACT #60B95

D-91-049-07



LOCATION OF SECTION INDICATED THUS: - [rectangle] -

STATE OF ILLINOIS
DEPARTMENT OF TRANSPORTATION
DIVISION OF HIGHWAYS

**PROPOSED
HIGHWAY PLANS**

F.A.P. ROUTE 870 (ILLINOIS 53)
OVER EAST BRANCH DUPAGE RIVER

BRIDGE REPLACEMENT &
APPROACH ROADWAY RECONSTRUCTION
SECTION 533 X-B-R-1

PROJECT: F-0870 (010)
DUPAGE COUNTY
C-91-049-07

FOR INDEX OF SHEETS, SEE SHEET NO. 2

PROJECT LOCATED IN THE VILLAGE OF GLEN ELLYN
AND THE VILLAGE OF LOMBARD

PROJECT DESCRIPTION

THIS WORK INCLUDES REMOVAL OF EXISTING PAVEMENT, COMPLETE PAVEMENT RECONSTRUCTION, AND EARTH EXCAVATION OF COMPENSATORY STORAGE AREAS (2).

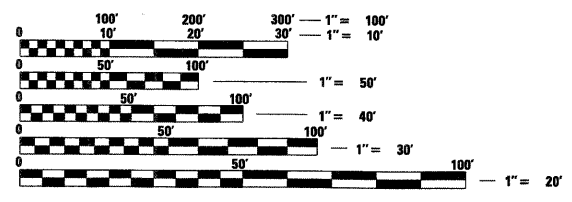
STRUCTURAL WORK INCLUDES REMOVAL OF THE EXISTING STRUCTURE, STRUCTURE EXCAVATION, CONSTRUCTION OF A NEW BRIDGE, AND APPROACH SLABS.

DESIGN DESIGNATION

URBAN OTHER PRINCIPAL ARTERIAL (TWS-2)

TRAFFIC VOLUMES AND SPEEDS

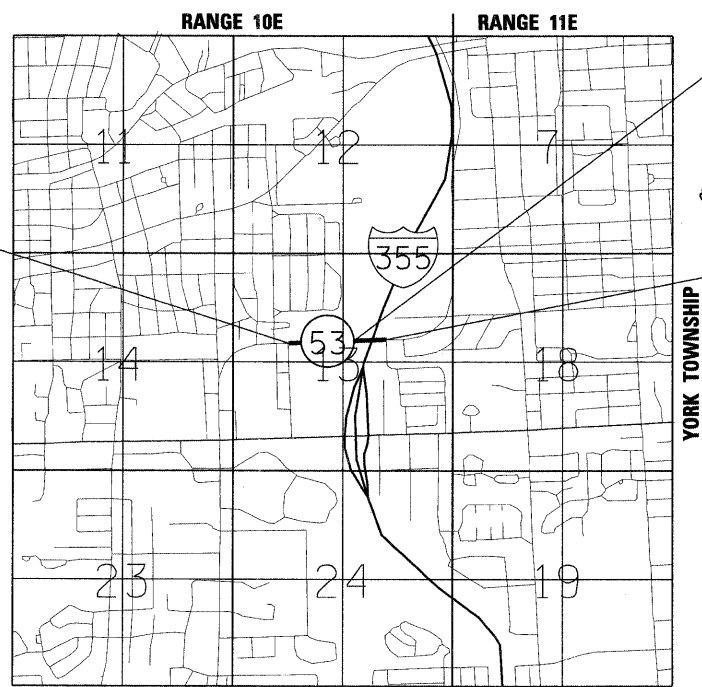
ADT	DESIGN SPEED	POSTED SPEED
35,000 (2030)	45 MPH	40 MPH



FULL SIZE PLANS HAVE BEEN PREPARED USING STANDARD ENGINEERING SCALES. REDUCED SIZED PLANS WILL NOT CONFORM TO STANDARD SCALES. IN MAKING MEASUREMENTS ON REDUCED PLANS, THE ABOVE SCALES MAY BE USED.

J.U.L.I.E.
JOINT UTILITY LOCATION INFORMATION FOR EXCAVATION
1-800-892-0123 OR 811

CONTRACT NO. 60B95



PROJECT BEGINS
STA. 911+20

EXISTING - SN 022-0077
PROPOSED - SN 022-0181
REMOVE EXISTING SINGLE SPAN
CONCRETE STRUCTURE AND CONSTRUCT
THREE SPAN CONCRETE SLAB STRUCTURE

PROJECT ENDS
STA. 924+20.8

TOWNSHIP 39N

LOCATION MAP (N.T.S.)

NET LENGTH OF PROJECT 1,300 ft. = 0.25 mi.
GROSS LENGTH OF PROJECT 1,300 ft. = 0.25 mi.



SIGNED *Philip J. Ming*
DATE August 15, 2008
EXPIRES November 30, 2009
FOR DRAWINGS ALL OTHER DRAWINGS



SIGNED *James S. Szypulski*
DATE August 15, 2008
EXPIRES November 30, 2008
FOR DRAWINGS STR-1 TO STR-20



SIGNED *Cecil D. Stovall*
DATE August 15, 2008
EXPIRES November 30, 2008
FOR DRAWINGS LTR-1 TO LTR-4

STATE OF ILLINOIS
DEPARTMENT OF TRANSPORTATION
DIVISION OF HIGHWAYS

SUBMITTED 7/28 2008

Diana M. O'Keefe DEPUTY DIRECTOR OF HIGHWAYS, REGION ONE ENGINEER
December 5, 2008

Eric E. Harner ENGINEER OF DESIGN AND ENVIRONMENT
December 5, 2008

Christine M. Reed DIRECTOR OF HIGHWAYS, CHIEF ENGINEER

JE JACOBS ONE NORTH FRANKLIN
SUITE 500
CHICAGO, IL 60606
312-251-3000

PRINTED BY THE AUTHORITY OF THE STATE OF ILLINOIS

100T Project Manager: Brian Kuttub (847) 705-4431 (District 1)