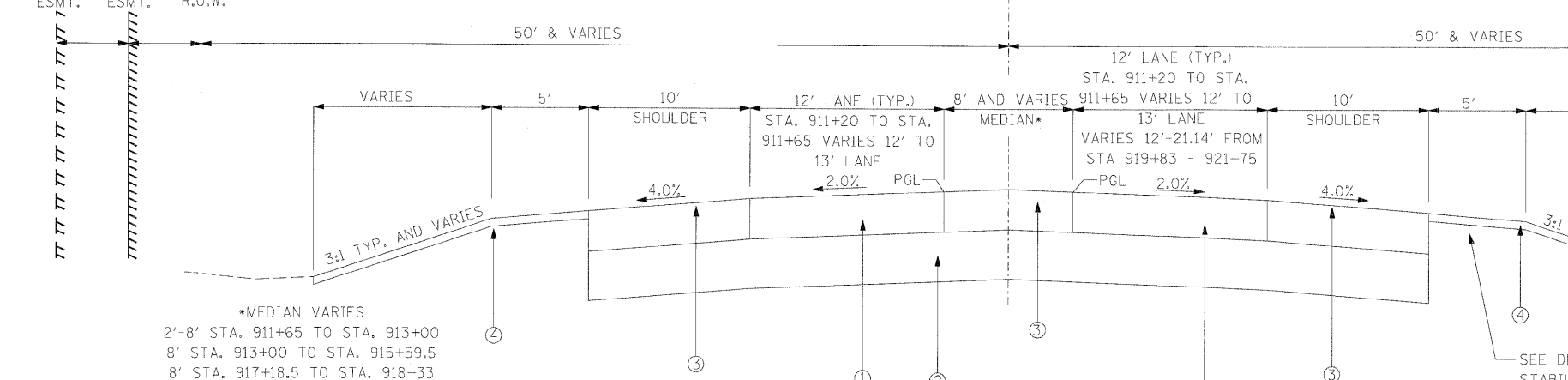
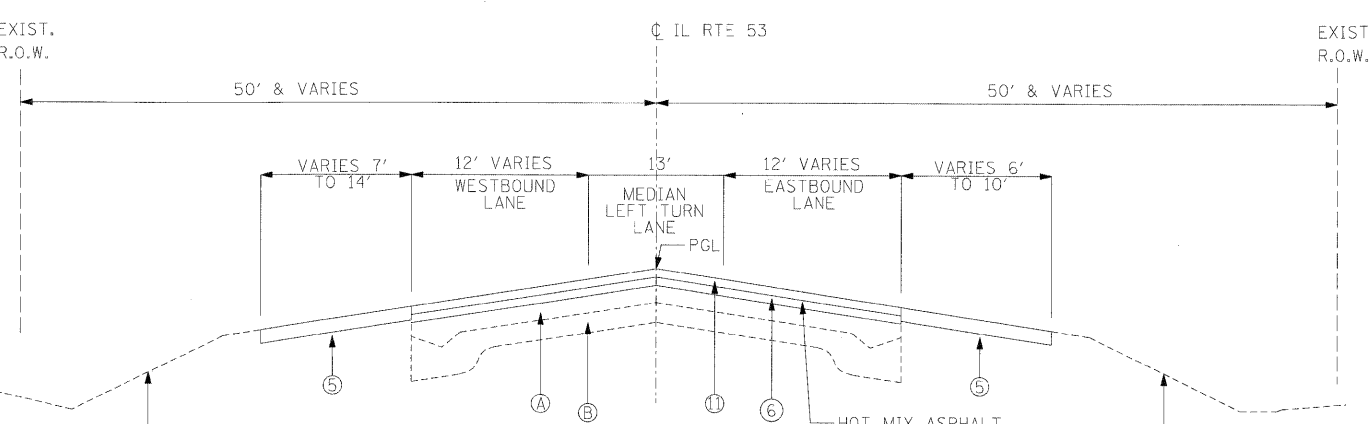


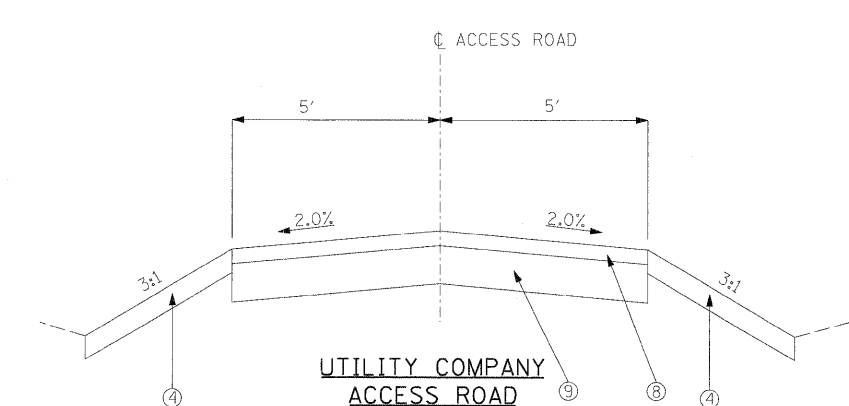
EXISTING CONDITIONS
 FROM STA. 911+20 TO STA. 915+89
 FROM STA. 916+88 TO STA. 921+75
 (STATIONS 915+89 TO 916+88 OMITTED FOR BRIDGE AND APPROACH PAVEMENT)



PROPOSED CONDITIONS
 FROM STA. 911+20 TO STA. 915+59.5
 FROM STA. 917+18.5 TO STA. 921+75
 (STATIONS 915+59.5 TO 917+18.5 OMITTED FOR BRIDGE AND APPROACH PAVEMENT)



PROPOSED CONDITIONS
 FROM STA. 921+75 TO STA. 924+20.80



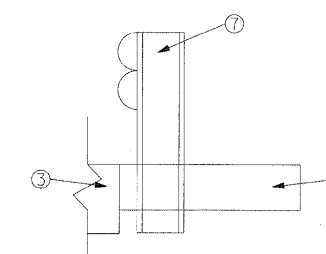
UTILITY COMPANY ACCESS ROAD
 AS REQUIRED SEE PLANS

- LEGEND - EXISTING**
- Ⓐ HOT-MIX ASPHALT OVERLAY 4 5/8" TYPICAL AND VARIES
 - Ⓑ AGGREGATE SHOULDERS
 - Ⓒ PCC BASE COURSE 9"-7"-9"
 - Ⓓ EXISTING GROUND
 - Ⓔ HOT-MIX ASPHALT SHOULDER
- LEGEND - PROPOSED**
- ① HOT-MIX ASPHALT PAVEMENT (FULL DEPTH) 10 1/2"
 - ② AGGREGATE SUBGRADE 12"
 - ③ HOT-MIX ASPHALT SHOULDERS, 10 1/2" (3 LIFTS)
 - ④ TOPSOIL FURNISH AND PLACE, 4", SEEDING AS SHOWN IN LANDSCAPING PLANS
 - ⑤ AGGREGATE SHOULDER, TYPE B 6"
 - ⑥ POLYMERIZED HOT-MIX ASPHALT BINDER COURSE, IL-19.0, N90, 2 1/4" MIN.
 - ⑦ PROPOSED TYPE A GUARDRAIL OR TERMINAL SECTION
 - ⑧ AGGREGATE SURFACE COURSE, TYPE B, 4"
 - ⑨ AGGREGATE BASE COURSE, TYPE B, 8"
 - ⑩ TEMPORARY PAVEMENT, 10 1/2"
 - ⑪ POLYMERIZED HOT-MIX ASPHALT SURFACE COURSE, MIX "F", N90, 2"
 - ⑫ POLYMERIZED HOT-MIX ASPHALT BINDER COURSE, IL-19.0, N90, 8 1/2" (IN 3 LIFTS)

HOT-MIX ASPHALT REQUIREMENTS

MIXTURE TYPE	AC TYPE	VOIDS
PAVEMENT RESURFACING		
POLYMERIZED HOT-MIX ASPHALT SURFACE COURSE, MIX "F", N90 (IL-9.5mm), 2"	SBS/SBR FG 70-22	4% @ 90 GYR.
POLYMERIZED HOT-MIX ASPHALT BINDER COURSE, IL-19.0, N90, 2 1/4"	SBS/SBR PG 70-22	4% @ 90 GYR.
FULL DEPTH PAVEMENT		
POLYMERIZED HOT-MIX ASPHALT SURFACE COURSE, MIX "F", N90 (IL-9.5mm), 2"	SBS/SBR PG 70-22	4% @ 90 GYR.
POLYMERIZED HOT-MIX ASPHALT BINDER COURSE, IL-19.0, N90, 8 1/2"	SBS/SBR PG 70-22	4% @ 90 GYR.
SHOULDERS, 10 1/2"		
HMA SHOULDER	PG 64-22*	2% @ 30 GYR.
TEMPORARY PAVEMENT, 10 1/2" **		
HMA SURFACE COURSE, MIX "D", N50 (IL 9.5mm), 1 1/2"	PG 64-22	4% @ 50 GYR.
TEMP PAVEMENT (HMA BINDER IL-19mm), 9" (3 LIFTS)	PG 64-22*	4% @ 50 GYR.

THE UNIT WEIGHT USED TO CALCULATE ALL HMA SURFACE MIXTURE QUANTITIES IS 112 LBS/SQ YD/IN.
 * WHEN RAP EXCEEDS 20%, THE NEW ASPHALT BINDER IN THE MIX SHALL BE PC 58-22.
 ** FOR TEMPORARY PAVEMENT CONTRACTOR HAS OPTION TO USE 10 1/2" PCC PAVEMENT INSTEAD OF HOT-MIX ASPHALT.



PROPOSED GUARDRAIL STABILIZATION

EASTBOUND
 FROM STA. 911+76 TO STA. 914+32
 FROM STA. 914+52 TO STA. 915+89
 FROM STA. 916+89 TO STA. 918+76

WESTBOUND
 FROM STA. 913+99 TO STA. 915+89
 FROM STA. 916+89 TO STA. 918+81
 FROM STA. 919+04 TO STA. 921+00

STRUCTURAL DESIGN TRAFFIC: PV= 24,313 ROAD/STREET CLASSIFICATION: P= 96%	SU= 760 S= 3%	YEAR 2014 MU= 253 CLASS II M= 1%
TRAFFIC FACTOR: ACTUAL TF= 0.93 MINIMUM TF= 1.9	AC TYPE= 20	
AC GRADE: BINDER= PG 70-22 SUBGRADE SUPPORT RATING: SR= P002	SURFACE= PG 70-22	

