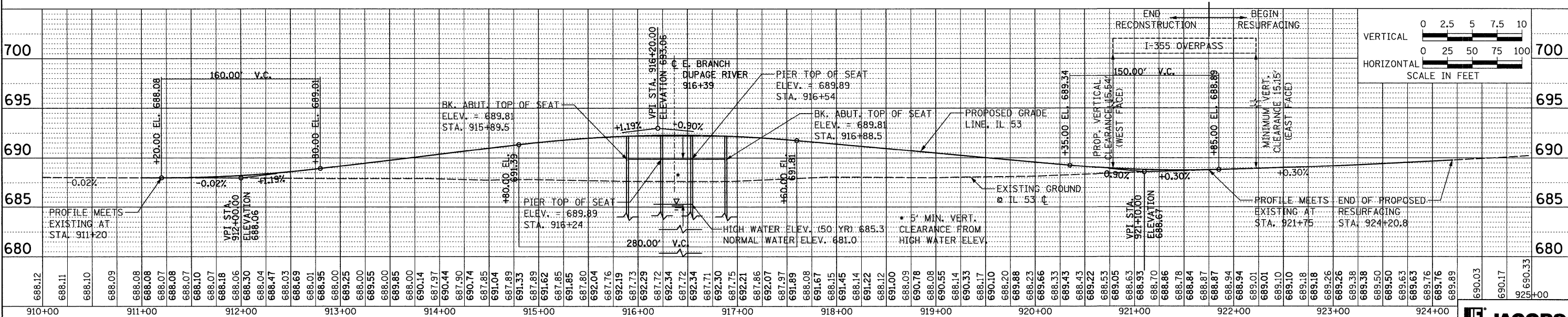
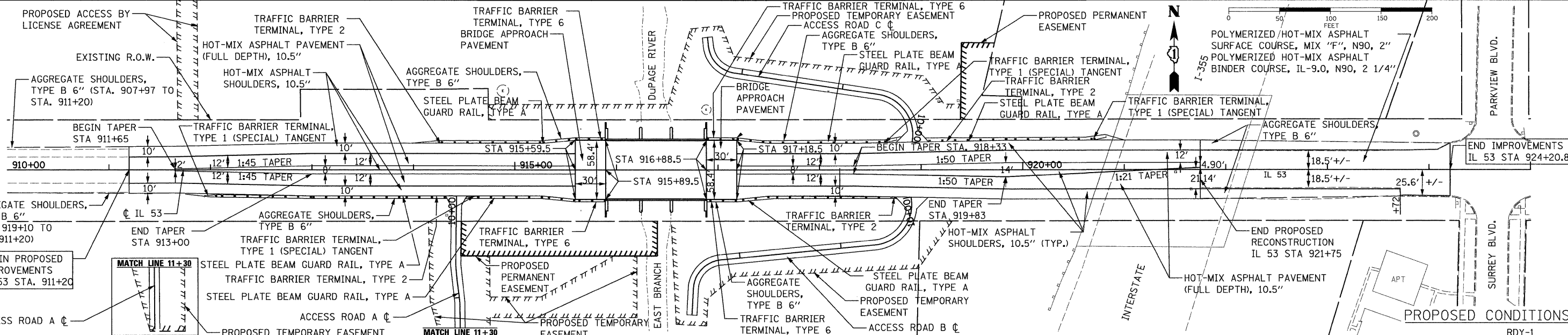
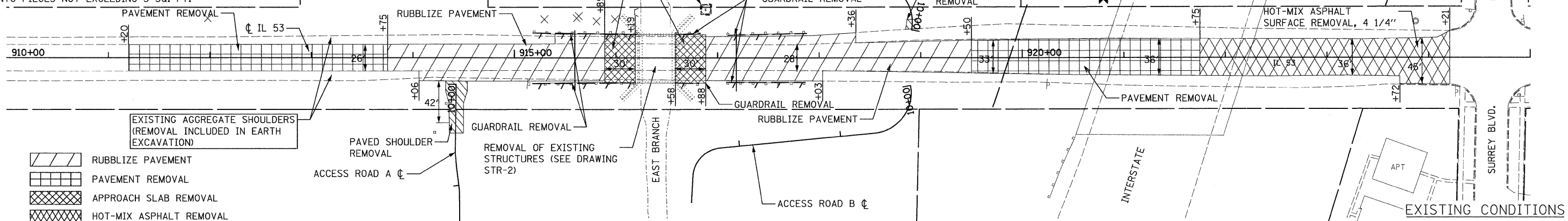


NOTES:

- FOR EXISTING UTILITY LOCATIONS, SEE SHEET SUE-1 AND SUE-2.
- FOR SHOULDER TRANSITIONS AT APPROACH PAVEMENT, SEE DRAWING DET-1
- ALL RUBBLIZED PAVEMENT TO BE BROKEN INTO PIECES NOT EXCEEDING 3 SQ. FT.
- FOR GUARDRAIL TERMINAL LOCATIONS SEE SHEET SCH-1
- FOR PAVEMENT DETAILS BETWEEN STA. 911+20 & STA. 911+65, SEE DRAWING DET-2

DATE	
BY	
REVIEWED	
PLANNED	
NOTED	
CHECKED	
NO.	

DATE	
BY	
REVIEWED	
PLANNED	
NOTED	
CHECKED	
NO.	



FILE NAME = Pa\2002\020019_004\Cadd\Sheet Files\Part 1\N13_PLAN_PROF_1.sht	DESIGNED - TAI DRAWN - KEB CHECKED - PJM DATE - 10/15/08	REVISED 11/19/08 REVISED - REVISED - REVISED -	F.A.P. ROUTE 870 (ILLINOIS 53) OVER EAST BRANCH DUPAGE RIVER PLAN AND PROFILE - IL 53 SCALE: NONE SHEET NO. OF SHEETS STA. 910+00 TO STA. 925+00	F.A. RTE. 870 SECTION 533 X-B-R-1 COUNTY DUPAGE TOTAL SHEETS 87 SHEET NO. 13 CONTRACT NO. 60B95
---	---	---	---	---

