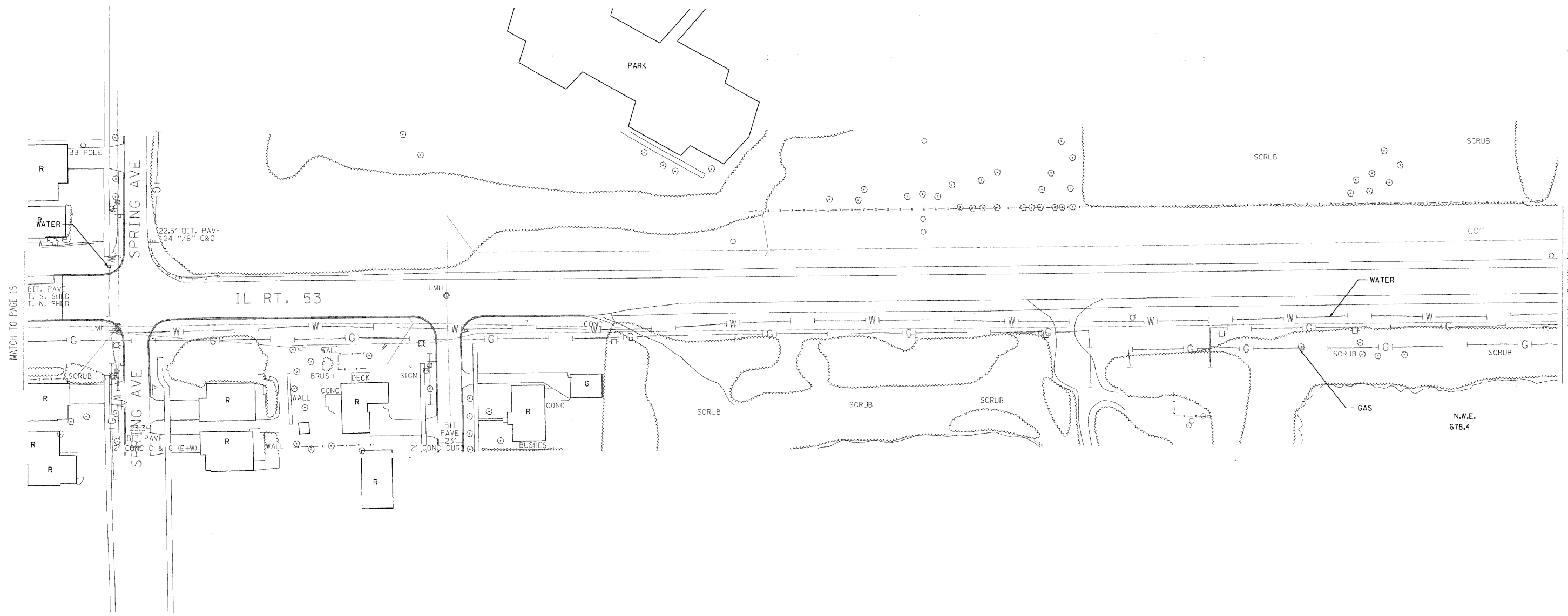


F.A. RTE.	SECTION	COUNTY	TOTAL SHEETS	SHEET NO.
	533 X-B-R-1	Dupage	87	22
STA.	TO STA.			
FED. ROAD DIST. NO.	ILLINOIS	FED. AID PROJECT		



MATCH TO PAGE 15

MATCH TO PAGE 17

N.W.E.
678.4

All utilities Quality Level "B" unless noted otherwise.

The SBC locations depicted have been obtained through the application of geophysical methods to determine the existence and approximate horizontal position of these facilities. However, SBC will not provide TBE Group, Inc. with utility records nor allow access to their field closures (pedestals/manholes etc.) to help verify the locations of their existing underground facilities. Therefore, TBE is unable to verify the completeness of the SBC locations depicted in accordance with the CI/ASCE Standard 38-02.



TBE GROUP, INC.
CIVIL ENGINEERING • TRANSPORTATION • ENVIRONMENTAL
• PLANNING • UTILITY ENGINEERING/LOCATING

IL09500102
TBE SUE PAGE NO: 16 of 28
Checked by: _____

SUE Quality Level "B" : Designating

---	SEWER
---	FORCE MAIN
---	CATV
---	FIBER OPTIC
---	TELEPHONE
---	WATER
---	GAS
---	ELECTRIC

Utilities shown in color on these plans as depicted in the legend have been investigated by TBE Group, Inc in accordance with SUE Industry Standards. All other information shown has been provided to TBE Group, Inc by others. Changes to utilities after 8/27/01 may have been made and therefore may result in variances from this plan. Consideration should be given to updating this plan if deemed advisable prior to final design and construction.


205 W. WACKER DRIVE
SUITE 1020
CHICAGO, IL 60606
(312) 704-1970

REVISIONS	
NAME	DATE
UPDATED BORDER	11/21/06

ILLINOIS DEPARTMENT OF TRANSPORTATION
SUE Investigation of Underground Utilities
ILL RTE 53
FROM PARK BLVD TO PETERSON AVE
Contract No. 60994
Section No. (533,533) SV-1 & X (RS-8)
SCALE : 1" = 50'
DATE : AUG. 27, 2001
DRAWN BY : D.C.
CHECKED BY : Z.C.

SUE-1