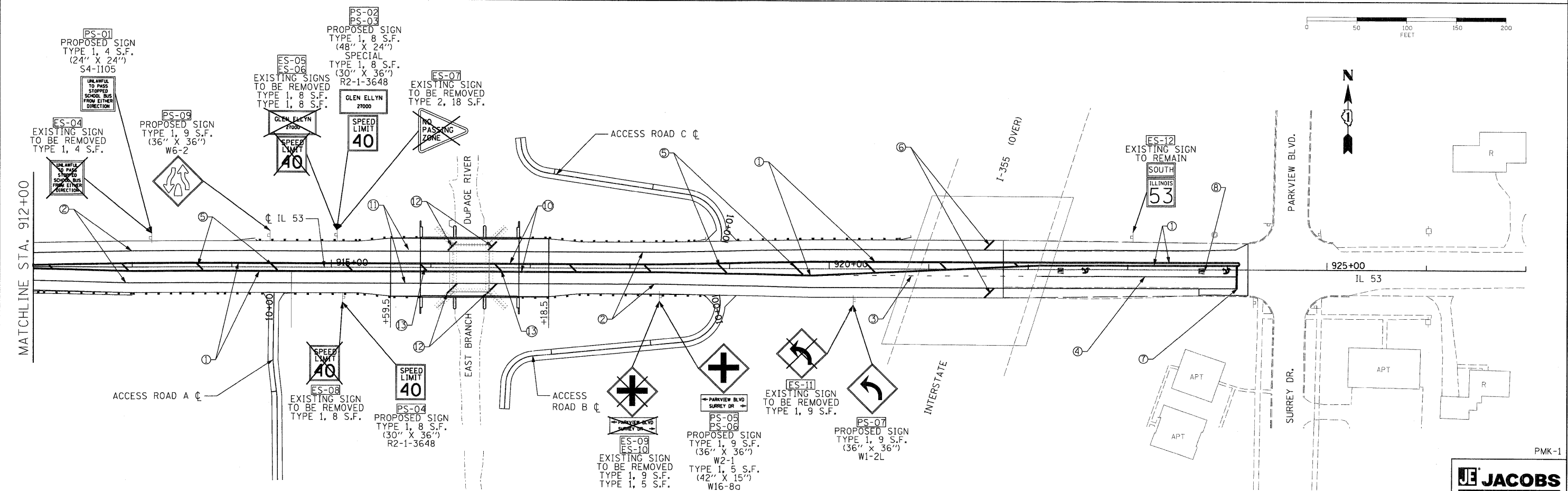
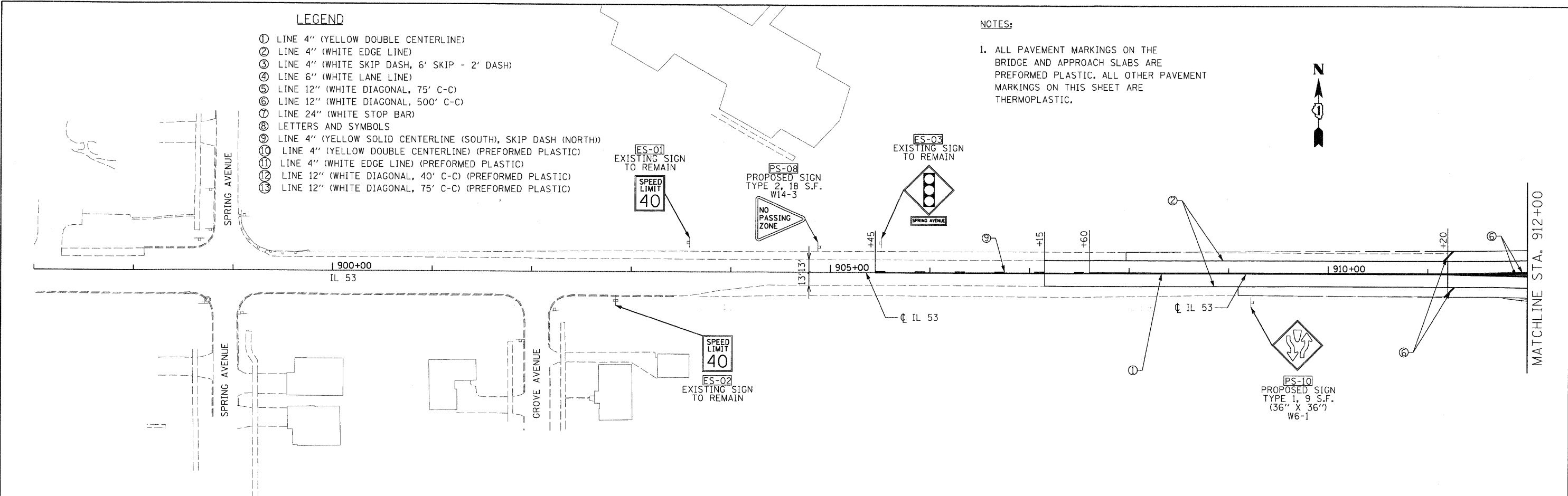


LEGEND

- ① LINE 4" (YELLOW DOUBLE CENTERLINE)
- ② LINE 4" (WHITE EDGE LINE)
- ③ LINE 4" (WHITE SKIP DASH, 6' SKIP - 2' DASH)
- ④ LINE 6" (WHITE LANE LINE)
- ⑤ LINE 12" (WHITE DIAGONAL, 75' C-C)
- ⑥ LINE 12" (WHITE DIAGONAL, 500' C-C)
- ⑦ LINE 24" (WHITE STOP BAR)
- ⑧ LETTERS AND SYMBOLS
- ⑨ LINE 4" (YELLOW SOLID CENTERLINE (SOUTH), SKIP DASH (NORTH))
- ⑩ LINE 4" (YELLOW DOUBLE CENTERLINE) (PERFORMED PLASTIC)
- ⑪ LINE 4" (WHITE EDGE LINE) (PERFORMED PLASTIC)
- ⑫ LINE 12" (WHITE DIAGONAL, 40' C-C) (PERFORMED PLASTIC)
- ⑬ LINE 12" (WHITE DIAGONAL, 75' C-C) (PERFORMED PLASTIC)

NOTES:

1. ALL PAVEMENT MARKINGS ON THE BRIDGE AND APPROACH SLABS ARE PERFORMED PLASTIC. ALL OTHER PAVEMENT MARKINGS ON THIS SHEET ARE THERMOPLASTIC.



FILE NAME = P:_2002\0220019.004\Cadd\Sheet Files\Part 1\FVMT_MAKR.SHT	DESIGNED - TAI	REVISED - ---	STATE OF ILLINOIS DEPARTMENT OF TRANSPORTATION		F.A.P. ROUTE 870 (ILLINOIS 53) OVER EAST BRANCH DUPAGE RIVER		F.A. RTE.	SECTION	COUNTY	TOTAL SHEETS	SHEET NO.
PLOT SCALE = 1" = 50'	DRAWN - KEB	REVISED - ---					870	533 X-B-R-1	DUPAGE	87	27
PLOT DATE = 10/8/2008	CHECKED - PJM	REVISED - ---	PAVEMENT MARKING AND SIGNING PLAN		SCALE: 1" = 50' SHEET NO. OF SHEETS STA. TO STA.		CONTRACT NO. 60B95				
	DATE - 10/15/08	REVISED - ---									



PMK-1