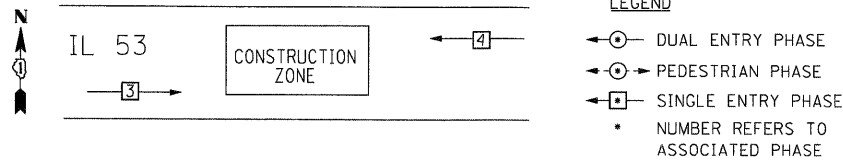


**NOTES FOR TEMPORARY TRAFFIC SIGNALS**

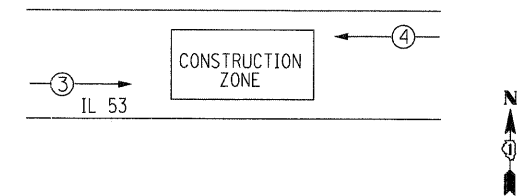
1. ALL CONTROL EQUIPMENT INCLUDING EMERGENCY PRE-EMPTION AND COMMUNICATION DEVICES FOR THE TEMPORARY TRAFFIC SIGNAL(S) SHALL BE FURNISHED BY THE CONTRACTOR.
2. ONLY CONTROLLERS SUPPLIED BY ONE OF THE DISTRICT APPROVED CLOSED LOOP EQUIPMENT MANUFACTURERS WILL BE APPROVED FOR USE AT TEMPORARY SIGNAL LOCATIONS. ALL CONTROLLERS USED FOR TEMPORARY SIGNALS SHALL BE FULLY ACTUATED NEMA MICRO-PROCESSOR BASED WITH RS232 DATA ENTRY PORTS COMPATIBLE WITH EXISTING MONITORING SOFTWARE APPROVED BY IDOT DISTRICT 1, INSTALLED IN A NEMA TS1 OR TS2 CABINET. ONLY ONE BRAND OF CONTROLLER WILL BE ACCEPTED FOR ANY ONE CONTRACT.
3. ALL TRAFFIC SIGNAL SECTIONS SHALL BE 12" L.E.D. HEADS SHALL BE PLACED AS INDICATED ON THE TEMPORARY TRAFFIC SIGNAL PLAN OR AS DIRECTED BY THE ENGINEER. THE CONTRACTOR SHALL FURNISH ENOUGH CABLE SLACK TO RELOCATE HEADS TO ANY POSITION ON THE SPAN WIRE. THE TEMPORARY TRAFFIC SIGNAL SHALL REMAIN IN OPERATION DURING ALL SIGNAL HEAD RELOCATIONS. EACH TEMPORARY TRAFFIC SIGNAL HEAD SHALL HAVE ITS OWN CABLE FROM THE CONTROLLER CABINET TO THE SIGNAL HEAD.
4. ALL LABOR AND MATERIAL REQUIRED TO COMPLY WITH THESE REQUIREMENTS SHALL BE CONSIDERED INCIDENTAL TO THE BID PRICE OF TEMPORARY SIGNAL INSTALLATION.
5. THE TEMPORARY TRAFFIC SIGNAL WILL BE IN OPERATION DURING STAGE 1.
6. TEMPORARY TRAFFIC SIGNAL HEADS SHALL BE BAGGED AND DISCONNECTED WHEN NOT IN USE. ONLY IF TWO-WAY TRAFFIC OPERATION IS PERMITTED.
7. PROVIDE MINIMUM OF 18 FOOT CLEARANCE FOR THE BOTTOM OF THE SIGNAL HEAD OVER THE ROADWAY.
8. TEMPORARY ELECTRICAL SERVICE INSTALLATION TO POWER BOTH TEMPORARY BRIDGE TRAFFIC SIGNALS AND TEMPORARY LIGHTING.
9. THE CONTRACTOR WILL BE REQUIRED TO COORDINATE TRAFFIC SIGNALS TIMING WITH THE ILLINOIS DEPARTMENT OF TRANSPORTATION.

**TEMPORARY CONTROLLER SEQUENCE**  
TO BE USED AT ALL TIME DURING ONE LANE OPERATION

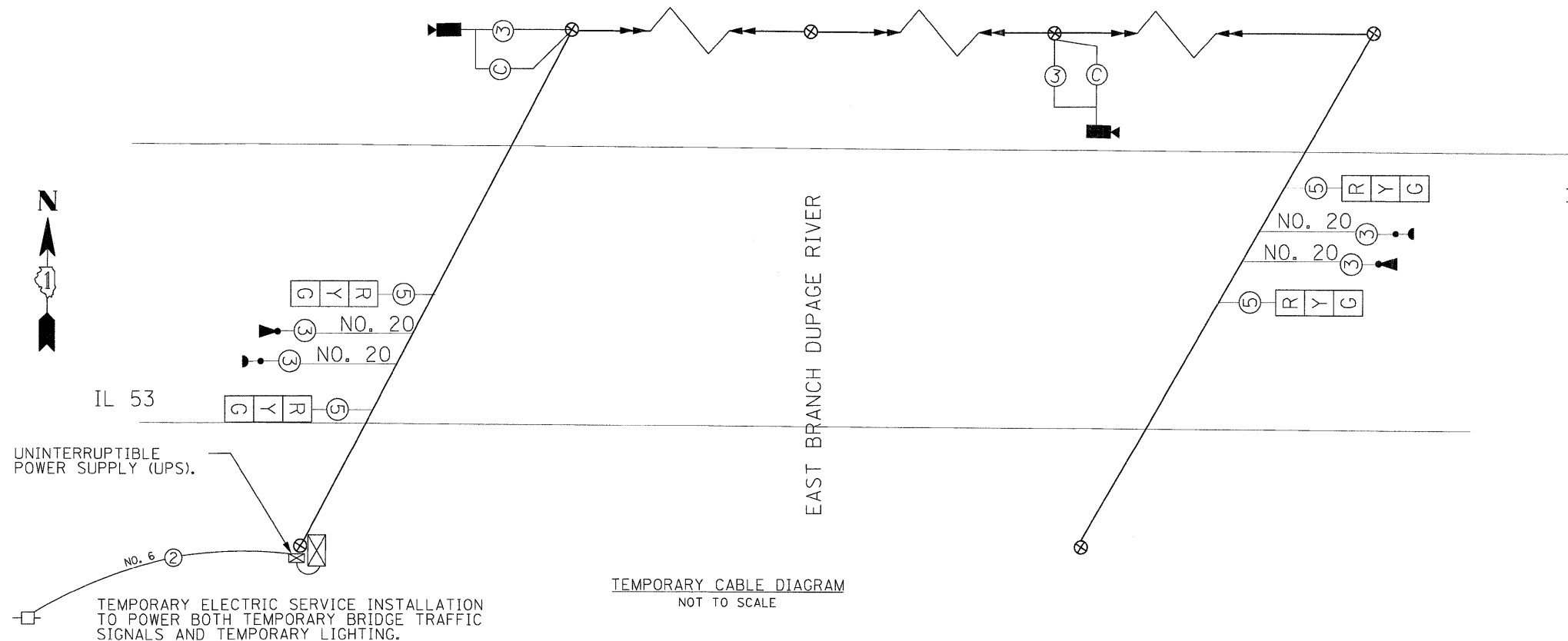


I.D.O.T TRAFFIC SIGNAL INSTALLATION ELECTRICAL SERVICE REQUIREMENTS					TOTAL WATTAGE
TYPE	NO. LAMPS	WATTAGE INCAND.	LED	% OPERATION	
SIGNAL (RED)	4	135	17	0.50	34.00
(YELLOW)	4	135	25	0.25	25.00
(GREEN)	4	135	15	0.25	15.00
ARROW	0	135	12	0.10	-
PED. SIGNAL	0	90	25	1.00	-
CONTROLLER	1	100	100	1.00	100.00
EMER.VEH.PREEMP	2	50		0.05	5.0
VIDEO DETECTION	2	20		1.00	40.0
FLASHER	-	-	-	0.50	-
ENERGY COSTS TO: CONTRACTOR - TBD				TOTAL =	219.00
ENERGY SUPPLY CONTACT: DEBRA RANKIN					
PHONE: (630) 691-4379					
COMPANY: COM. ED.					

**TEMPORARY EMERGENCY VEHICLE  
PREEMPTION SEQUENCE**



PROPOSED EMERGENCY VEHICLE PREEMPTORS		
EMERGENCY VEHICLE PREEMPTOR	3	4
MOVEMENT	→	←



**TEMPORARY CABLE DIAGRAM LEGEND**

- CABLE ROUTED AERIALLY
- ⊠ TEMPORARY TRAFFIC SIGNAL SECTION OR PEDESTRIAN SIGNAL SECTION 12" (300mm)
- ⊠ TEMPORARY CONTROLLER CABINET
- ⊠ TEMPORARY SERVICE INSTALLATION
- ⑤ INDICATES NUMBER OF CONDUCTORS IN CABLE, ALL CONDUCTORS TO BE NUMBER 14 A.W.G. UNLESS OTHERWISE NOTED
- ▶ TEMPORARY EMERGENCY VEHICLE LIGHT DETECTOR
- ▶ TEMPORARY CONFIRMATION BEACON
- ⊠ TEMPORARY VEHICLE DETECTION ZONE
- ⊙ TEMPORARY PEDESTRIAN PUSHBUTTON DETECTOR
- ⊠ TEMPORARY 12" (300mm) PEDESTRIAN SIGNAL SECTION
- ▶ TEMPORARY VIDEO DETECTION CAMERA

SIG-2



FILE NAME = P:\2002\0220019.004\Cadd\Sheet Files\Part 1\SIG02.sht	DESIGNED - CJH	REVISED -	<b>STATE OF ILLINOIS DEPARTMENT OF TRANSPORTATION</b>	F.A.P. ROUTE 870 (ILLINOIS 53) OVER EAST BRANCH DUPAGE RIVER		F.A. RTE. 870	SECTION 533 X-B-R-1	COUNTY DuPAGE	TOTAL SHEETS 87	SHEET NO. 32	
PLOT SCALE = N.T.S	DRAWN - CJH	REVISED -		<b>TEMPORARY TRAFFIC SIGNAL PLAN WIRING</b>				CONTRACT NO. 60B95			
PLOT DATE = 10/9/2008	CHECKED - MJL	REVISED -		SCALE: N.T.S	SHEET NO. OF SHEETS	STA. TO STA.	FED. ROAD DIST. NO. - ILLINOIS FED. AID PROJECT				
	DATE - 10/15/08	REVISED -									