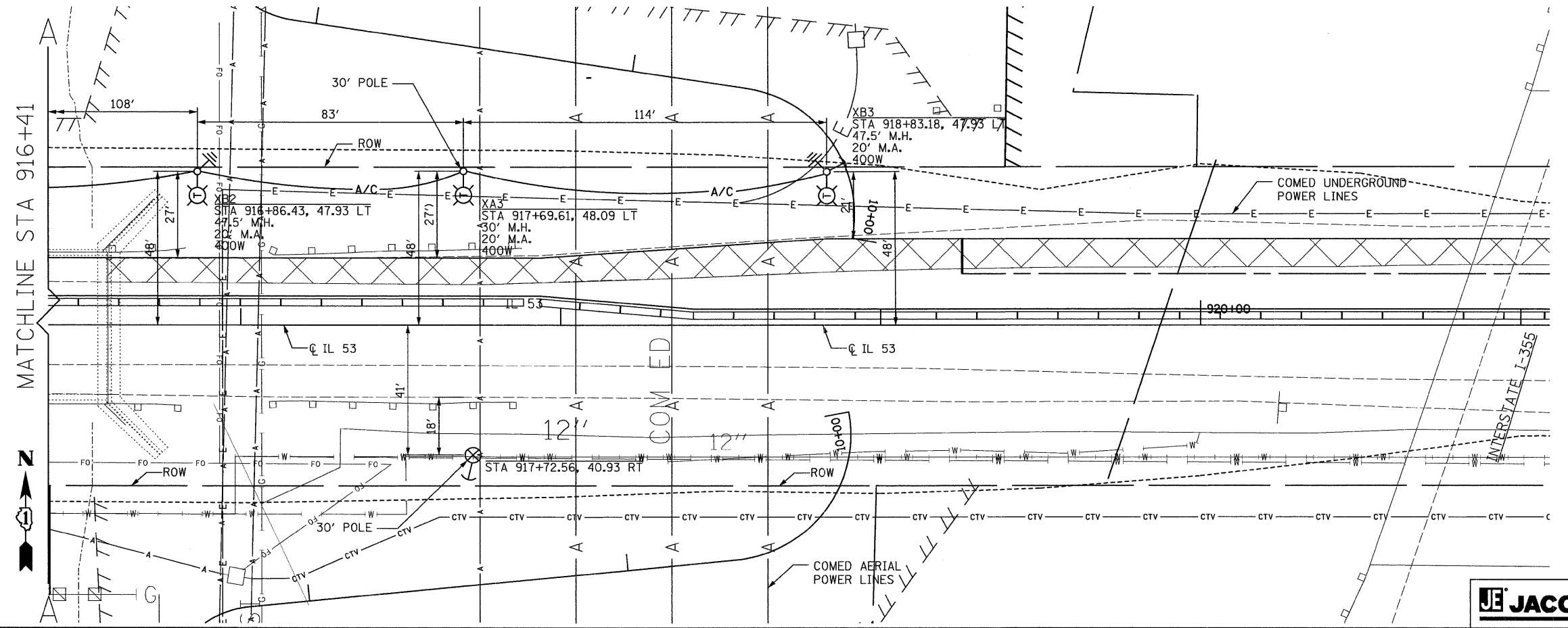


MATCHLINE STA 916+41

**TEMPORARY LIGHTING NOTES**

1. TEMPORARY LUMINAIRE, 400 WATT HPS, 120 VOLT, HORIZONTAL MOUNT, TYPE III, MEDIUM, FULL-CUTOFF WITH PHOTOCELL.
2. TEMPORARY LIGHTING TO BE REMOVED AS DIRECTED BY IDOT WHEN ROADWAY CONSTRUCTION IS COMPLETE.
3. ALL SYSTEMS ARE TO REMAIN OPERATIONAL DURING STAGED CONSTRUCTION.
4. NOT USED.
5. NOT USED.
6. GROUND EVERY THIRD POLE WITH TEMPORARY LUMINAIRE UNLESS NOTED OTHERWISE ON PLAN.
7. TEMPORARY POLES SHALL BE 60 FEET ABOVE GRADE UNLESS OTHERWISE NOTED.



LT6-2



FILE NAME = P:\_2002\020019\004\Cadd\Sheet Files\Part 1\35.LIT E02.sht	DESIGNED - HS	REVISED 11/19/08	STATE OF ILLINOIS DEPARTMENT OF TRANSPORTATION		F.A. RTE. 870 (ILLINOIS 53) OVER EAST BRANCH DUPAGE RIVER		F.A. RTE. 870	SECTION 533 X-B-R-1	COUNTY DuPAGE	TOTAL SHEETS 87	SHEET NO. 35
	DRAWN - HS	REVISED -	TEMPORARY LIGHTING - PLAN		SCALE: 1" = 20'		SHEET NO.	OF SHEETS	STA.	TO STA.	CONTRACT NO. 60B95
PLOT SCALE = 1" = 20'	CHECKED - CS	REVISED -			FED. ROAD DIST. NO. ILLINOIS FED. AID PROJECT						
PLOT DATE = 11/21/2008	DATE - 10/15/08	REVISED -									