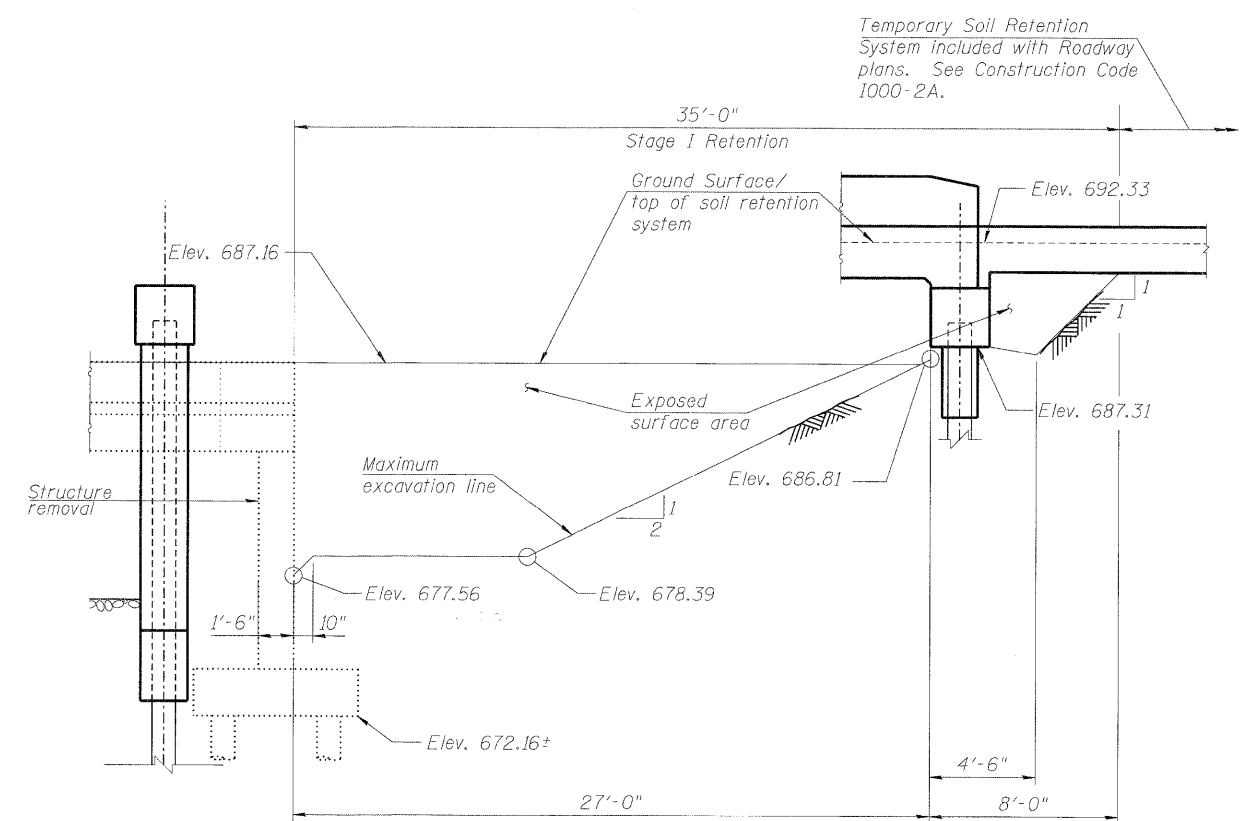


**WEST ABUTMENT
TEMPORARY SOIL RETENTION SYSTEM**



**EAST ABUTMENT
TEMPORARY SOIL RETENTION SYSTEM**

TEMPORARY SOIL RETENTION SYSTEM NOTES

1. A cantilevered sheet piling design does not appear feasible and additional members or other retention systems may be necessary. The Contractor shall submit a temporary soil retention system design including plan details and calculations for review and acceptance by the Engineer.

FILE NAME = P:\2002\2020\1004\Cadd\Structure\1\022-0181 Final\Sheet\0220181-60B95-024-ST.CCDL 2.dgn



DESIGNED - L J H	REVISED -
DRAWN - F J D	REVISED -
CHECKED - J S S	REVISED -
DATE - 10/15/08	REVISED -

**STATE OF ILLINOIS
DEPARTMENT OF TRANSPORTATION**

F.A.P. ROUTE 870 (ILLINOIS 53) OVER EAST BRANCH DUPAGE RIVER

STAGE CONSTRUCTION DETAILS

SCALE:	SHEET NO.	OF	SHEETS	STA.	TO STA.
--------	-----------	----	--------	------	---------

F.A. RTE. 870	SECTION 533-X-B-R-1	COUNTY DuPAGE	TOTAL SHEETS 87	SHEET NO. 41
CONTRACT NO. 60B95				
FED. ROAD DIST. NO. ILLINOIS FED. AID PROJECT				