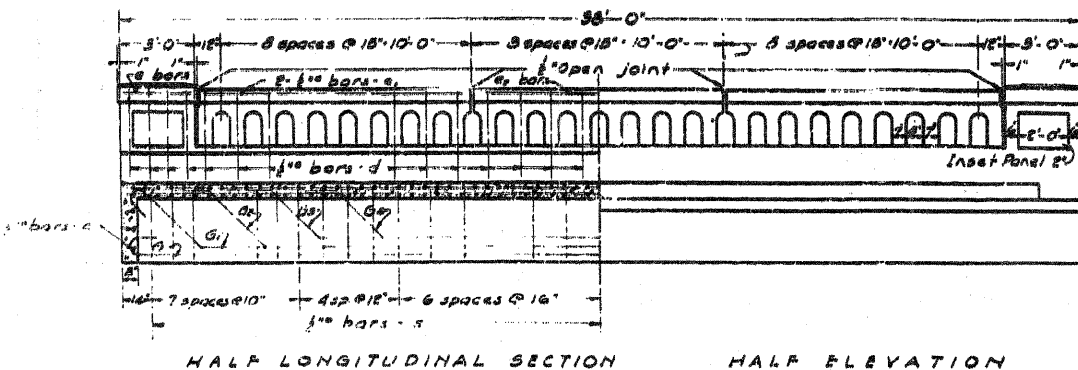


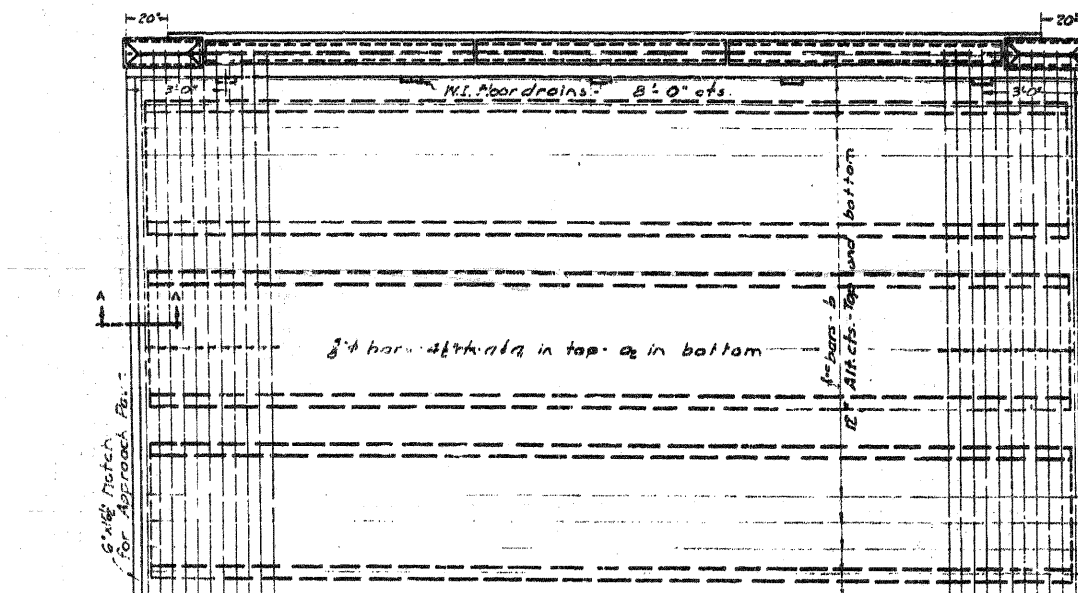
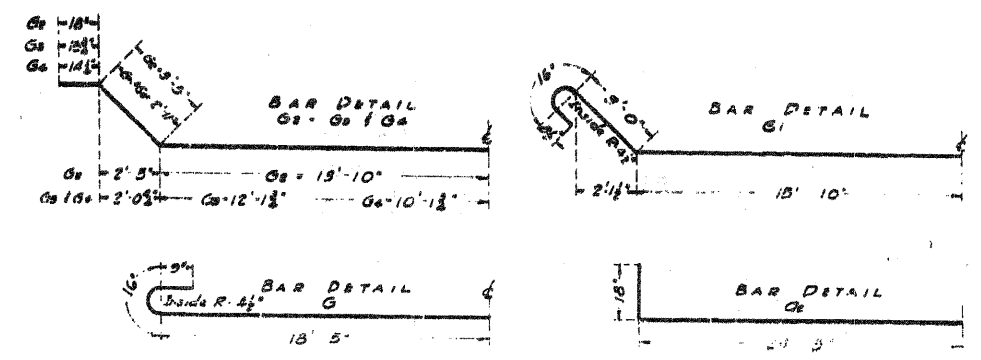
B.V. 603-A.N.W in 12" Paper - Lt. Sta. 706+10
Elevation: 684.15
No Existing Structure.

STATE OF ILLINOIS
DEPARTMENT OF PUBLIC WORKS & BUILDINGS
DIVISION OF HIGHWAYS

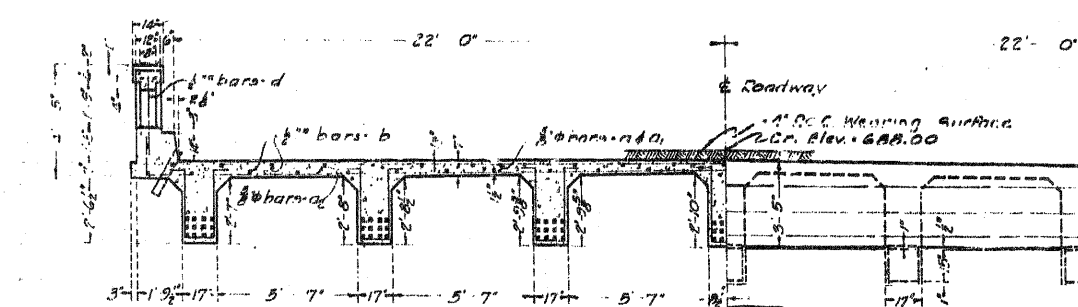
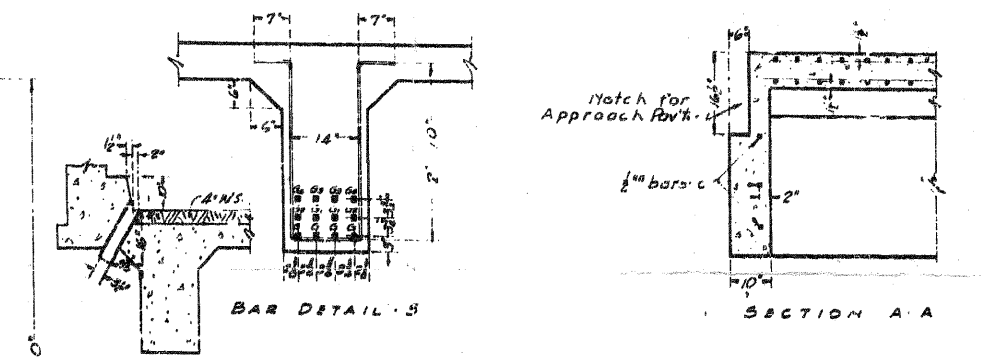
DESIGN NO.	CONTRACT NO.	COUNTY	TOTAL SHEETS	SHEET NO.
89	J&P-X	DUPAGE	87	26
FED. ROAD DIST. NO. 7 ILLINOIS FED. AID PROJECT				



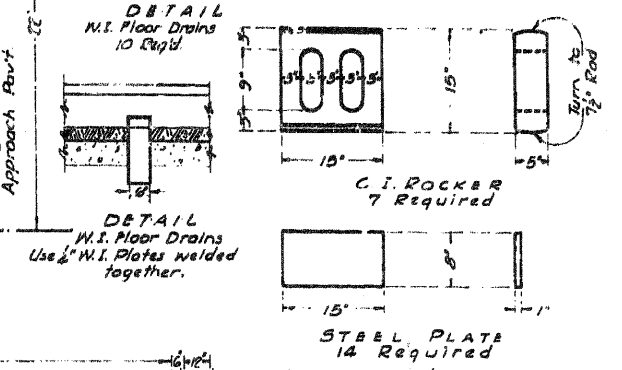
HALF LONGITUDINAL SECTION HALF ELEVATION



HALF PLAN



HALF CROSS SECTION HALF END ELEVATION



BILL OF MATERIAL

BAR	No.	SIZE	LENGTH
a	100	3/4"	21'-0"
b	100	3/4"	26'-0"
c	200	3/4"	25'-9"
d	98	1/2"	19'-6"
e	68	3/4"	8'-6"
f	8	3/4"	3'-0"
g	4	3/4"	10'-6"
g	28	1 1/2"	41'-0"
g1	14	1 1/2"	41'-9"
g2	14	1 1/2"	37'-6"
g3	14	1 1/2"	32'-9"
g4	14	1 1/2"	28'-6"
s	245	1/4"	8'-0"
c	12	1/4"	22'-0"

Notes: Rockers & Plates shall be given one shop coat of blue lead paint and two field coats of white lead paint. Surface of plates adjacent to Rockers shall be planed.

Class X Conc. - Rail. Cu. Yds. 4.7
Class X Conc. - Slab. Cu. Yds. 82.6
Reinforcing steel - Lbs. 2779.0
C. I. Rockers - Lbs. 1715
Steel Plates - Lbs. 480
Floor Drains - Ea. 10

NOTE: Class X concrete shall be used throughout. All reinforcing steel shall be wired securely in place before concrete is poured.

COMPUTED: H.J. Brickner, Jr.
CHECKED: J.N. DuVernet
DRAWN: H.J. DuVernet
CHECKED: J.H. DuVernet
ASSEMBLED:
CHECKED:

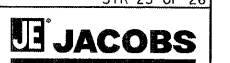
EXAMINED: 3/14/1934
PASSED: [Signature]
APPROVED: [Signature]

EAST BRANCH OF DUPAGE RIVER
S. B. I. Rts. 53 - 5&C. 533-X
DUPAGE COUNTY
STA. 705+88

FOR INFORMATION ONLY

FILE NAME = P:\2002\0220819\00A\Cadd\Structurals\SN022-001\Final\Draws\0220819-60B95-825-F16R.Ldg

DESIGNED - L.J.H.	REVISED -	STATE OF ILLINOIS DEPARTMENT OF TRANSPORTATION	F.A.P. ROUTE 870 (ILLINOIS 53) OVER EAST BRANCH DUPAGE RIVER	F.A. RTE.	SECTION	COUNTY	TOTAL SHEETS	SHEET NO.
DRAWN - F.J.D.	REVISED -		870	533-X-B-R-1	DUPAGE	87	62	
CHECKED - J.S.S.	REVISED -	SCALE:	SHEET NO. OF SHEETS STA. TO STA.	CONTRACT NO. 60B95				
DATE - 10/15/08	REVISED -	FED. ROAD DIST. NO. ILLINOIS FED. AID PROJECT						



STR-25 OF 26