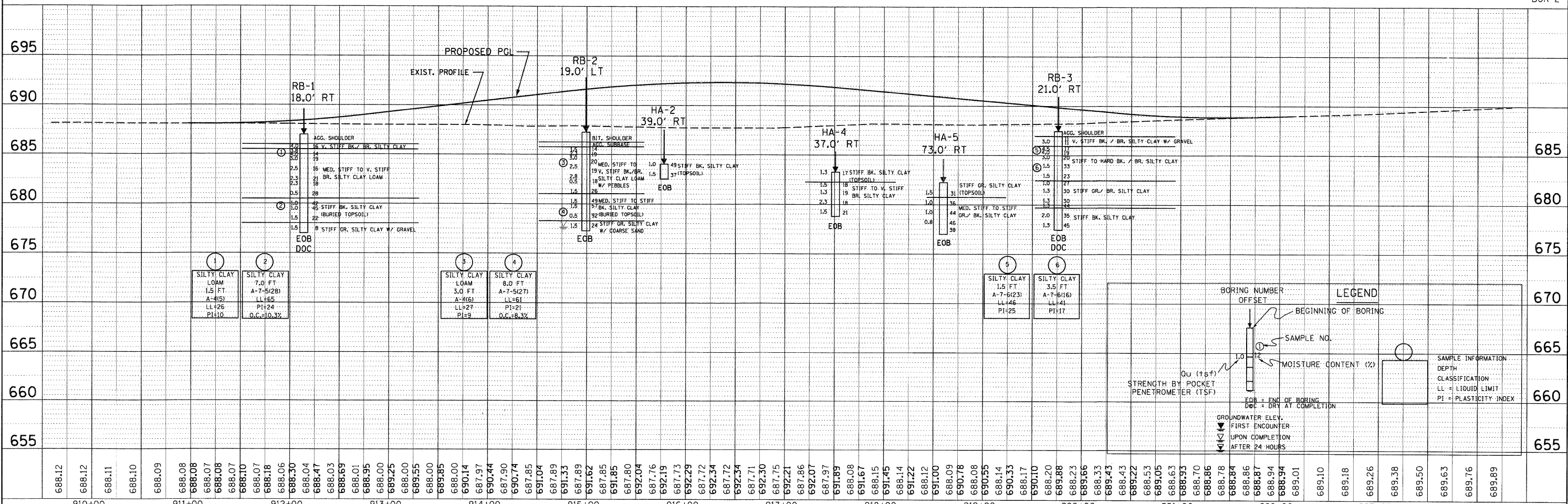
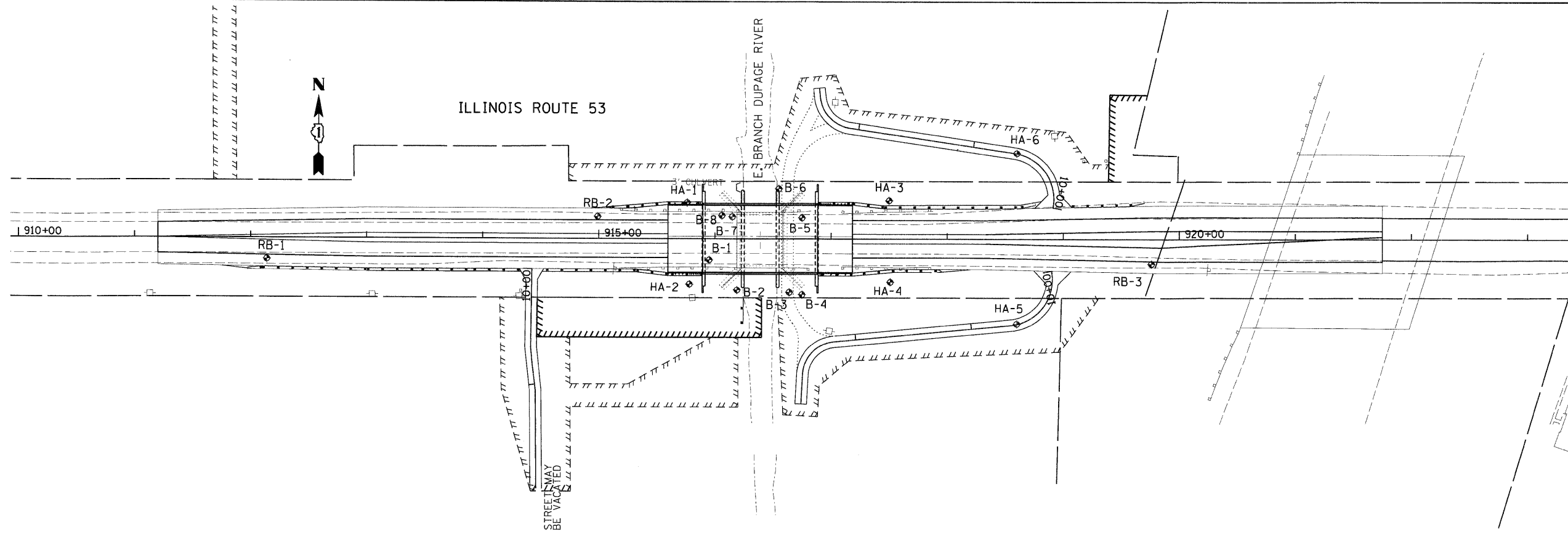


PLAN	DATE
NO.	
BY	
DATE	
REVISIONS	
PLANNED	
CHECKED	
ALIGNED	
DESIGNED	
NOTED	
FILE NAME	

PROFILE	DATE
NO.	
BY	
DATE	
REVISIONS	
PLANNED	
CHECKED	
ALIGNED	
DESIGNED	
NOTED	
FILE NAME	



1	SILTY CLAY LOAM 1.5 FT A-4(S) LL=26 PI=10
2	SILTY CLAY 7.0 FT A-7-5(28) LL=65 PI=24 O.C.=10.3%

3	SILTY CLAY LOAM 3.0 FT A-4(S) LL=27 PI=9
4	SILTY CLAY 8.0 FT A-7-5(27) LL=61 PI=21 O.C.=8.3%

5	SILTY CLAY 1.5 FT A-7-5(23) LL=46 PI=25
6	SILTY CLAY 3.5 FT A-7-6(16) LL=41 PI=17

**BORING NUMBER**  
OFFSET

**LEGEND**

- BEGINNING OF BORING
- SAMPLE NO.
- MOISTURE CONTENT (%)
- STRENGTH BY POCKET PENETROMETER (TSF)
- GROUNDWATER ELEV. FIRST ENCOUNTER UPON COMPLETION AFTER 24 HOURS
- EOB = END OF BORING
- DOC = DRY AT COMPLETION

**SAMPLE INFORMATION**  
DEPTH  
CLASSIFICATION  
LL = LIQUID LIMIT  
PI = PLASTICITY INDEX

FILE NAME = P:\_2002\022019.024\Cadd\Soils from 1001\h_soils.dgn	USER NAME = default	PREPARED BY IDOT	REVISED -	<b>STATE OF ILLINOIS DEPARTMENT OF TRANSPORTATION</b>	<b>ILLINOIS ROUTE 53 OVER THE EAST BRANCH DUPAGE RIVER SOILS PROFILE (WITH SOUTHSIDE HAND AUGERS)</b>	F.A.P. RTE. 870	SECTION 533X	COUNTY DUPAGE	TOTAL SHEETS 87	SHEET NO. 65
PLOT SCALE = #SCALE#	PLOT DATE = 10/10/2008	REVISED -	SCALE: SHEET NO. OF SHEETS STA. TO STA.			CONTRACT NO. 60B95				
		REVISED -				FED. ROAD DIST. NO. ILLINOIS FED. AID PROJECT				
		REVISED -								