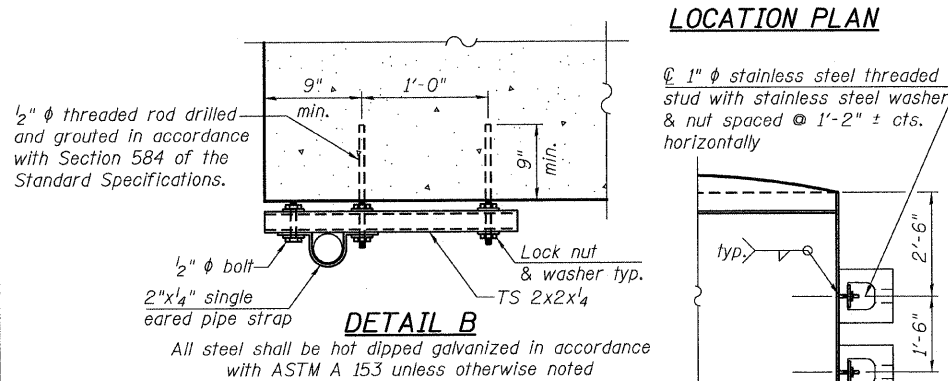
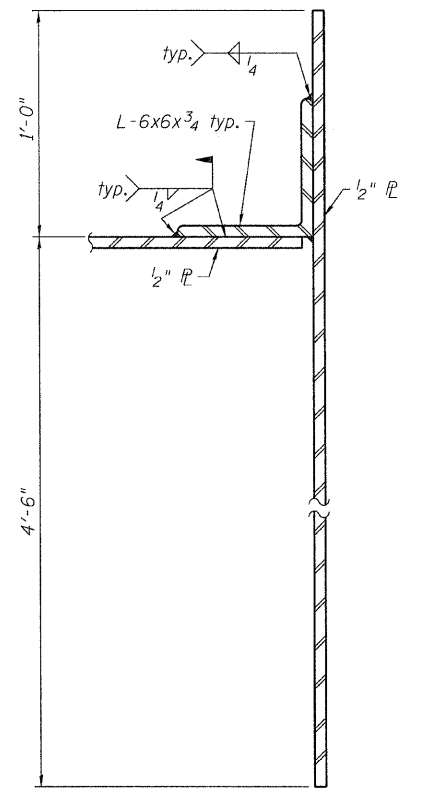
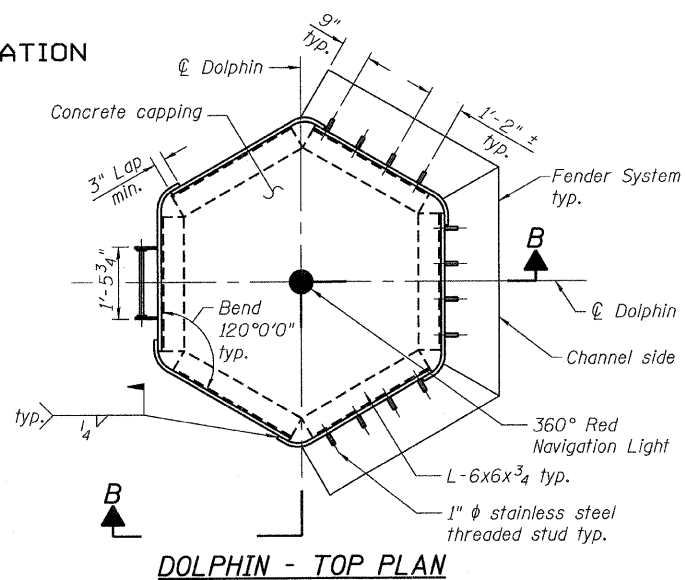
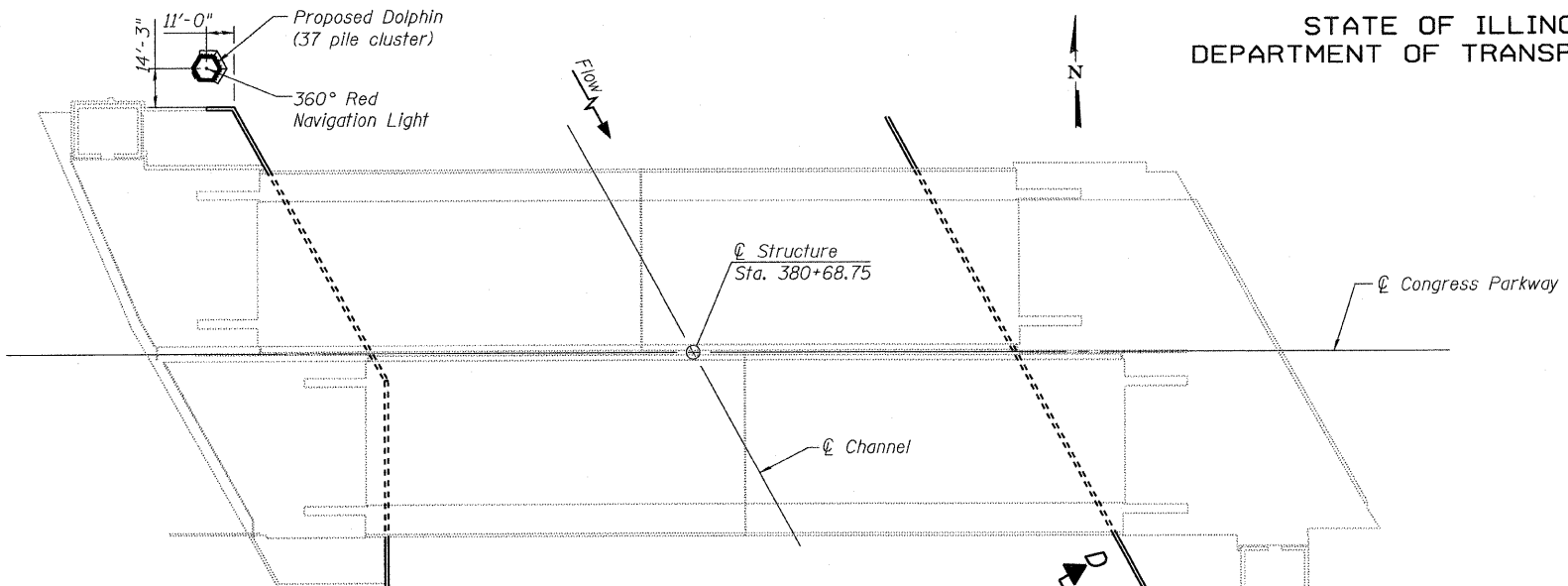


STATE OF ILLINOIS
DEPARTMENT OF TRANSPORTATION

ROUTE NO.	SECTION	COUNTY	TOTAL SHEETS	SHEET NO.
F.A.P. 389	2424.2 B-1	COOK	23	11
FED. ROAD DIST. NO. 7	ILLINOIS	FED. AID PROJECT-		

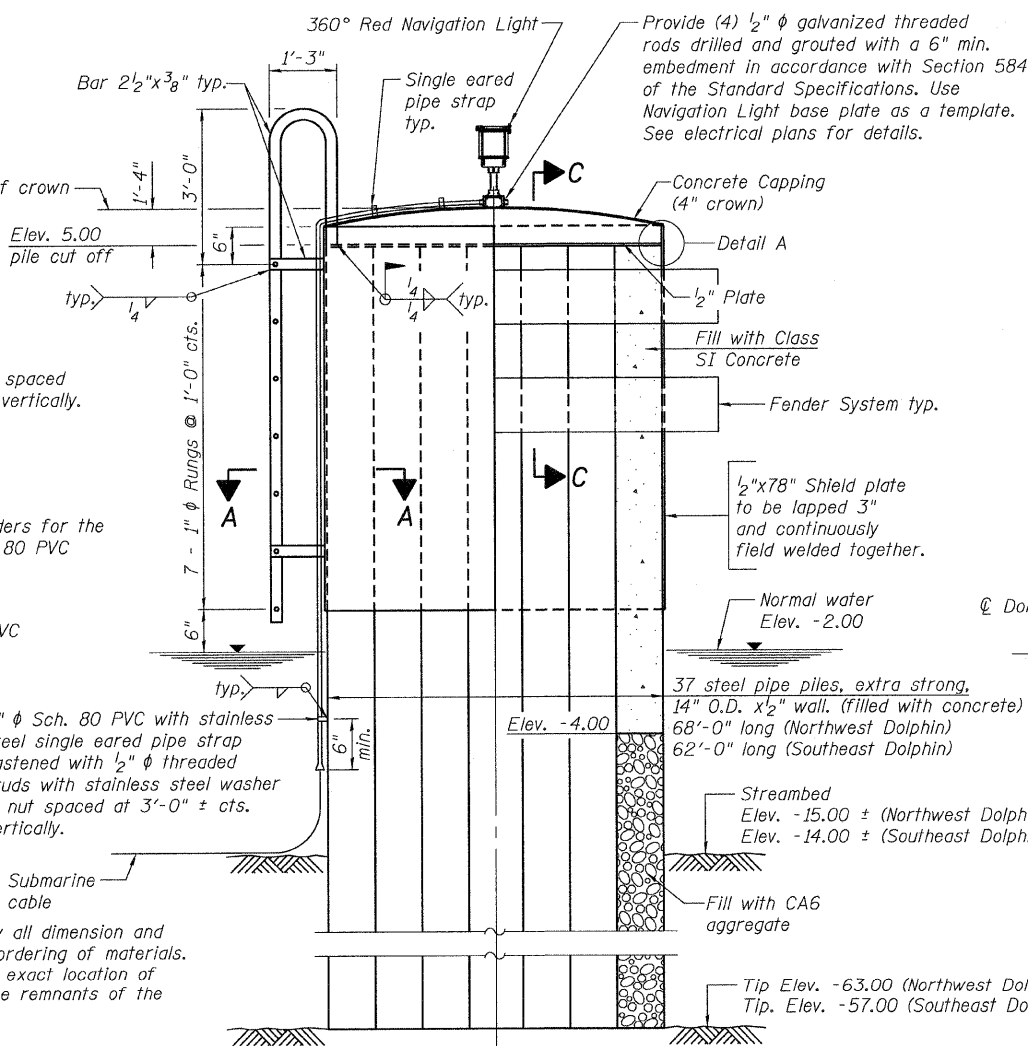
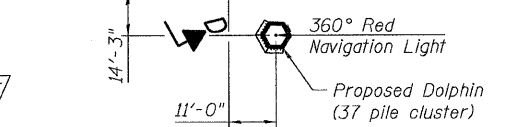
SHEET NO. 4
16 SHEETS

Contract No. 60E11

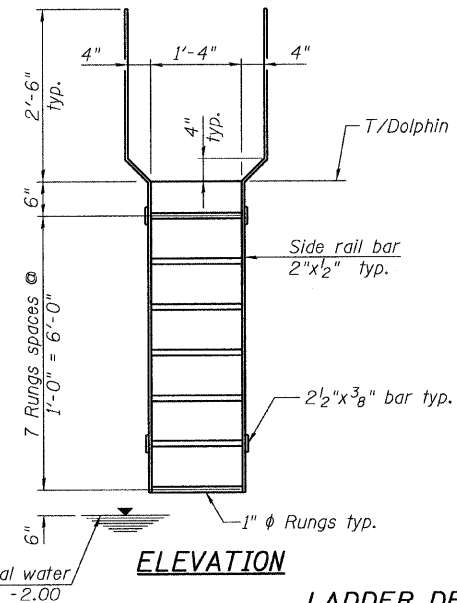
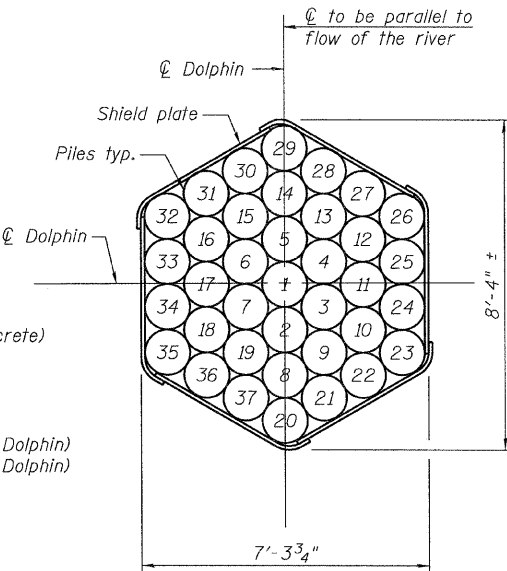


LOCATION PLAN

1" ϕ stainless steel threaded stud with stainless steel washer & nut spaced @ 1'-2" \pm cts. horizontally

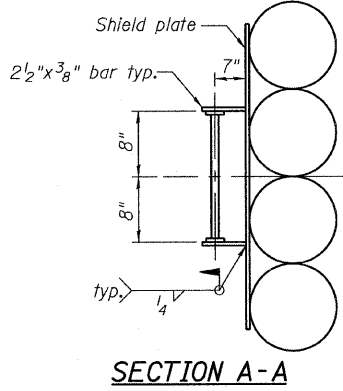


DETAIL A

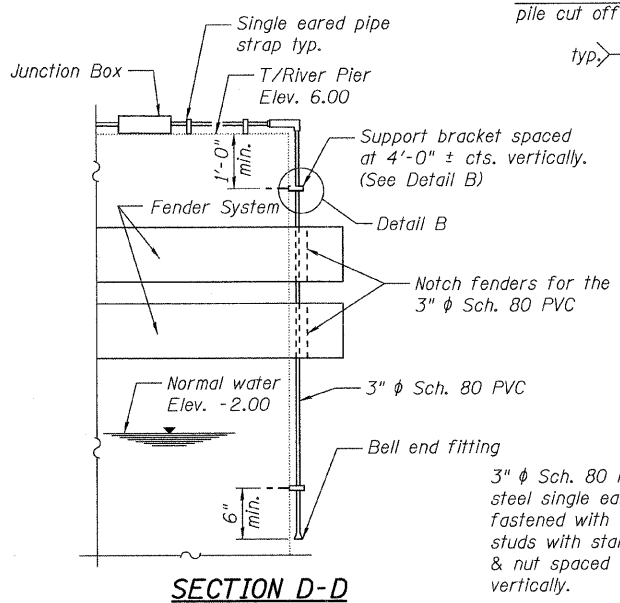


LADDER DETAILS

All steel shall be hot dipped galvanized in accordance with ASTM A 153 unless otherwise noted



SECTION A-A



SECTION D-D

Notes:
It shall be the responsibility of the Contractor to verify all dimension and conditions existing in the field prior to construction and ordering of materials. The replacement dolphins shall be installed in the same exact location of the existing timber pile dolphins without deviation after the remnants of the existing timber pile dolphins have been pulled. Number on the piles denotes driving sequence. Below Elev. -4.00', all new pipe piles shall be filled with CA6 coarse aggregate according to the quality standards and gradation specified in Section 1004 of the Standard Specifications and the remaining top 9 feet shall be filled with Class S1 Concrete according to Section 512 of the Standard Specifications. The new piles should be installed with care in order not to cause any damage to the existing subway tube or other underground facilities. Cost of navigation lights, submarine cable assembly, and attachments are all included with Navigation Lighting System. See Special Provisions. See electrical plans for navigation lights.

DESIGNED	J.Q.Zhong
CHECKED	S. CHELBIAN
DRAWN	D.C.PATEL
CHECKED	J.Q.Zhong



DOLPHIN PLAN AND DETAILS
F.A.P. RT. 389 - SEC. 2424.2 B-1
COOK COUNTY
STATION 380+68.75
STRUCTURE NO. 016-2445

G:\16843ADolphin\Cadd\Prefinal\0162445-60E11-004-DDT.dgn
15-OCT-2008 12:28