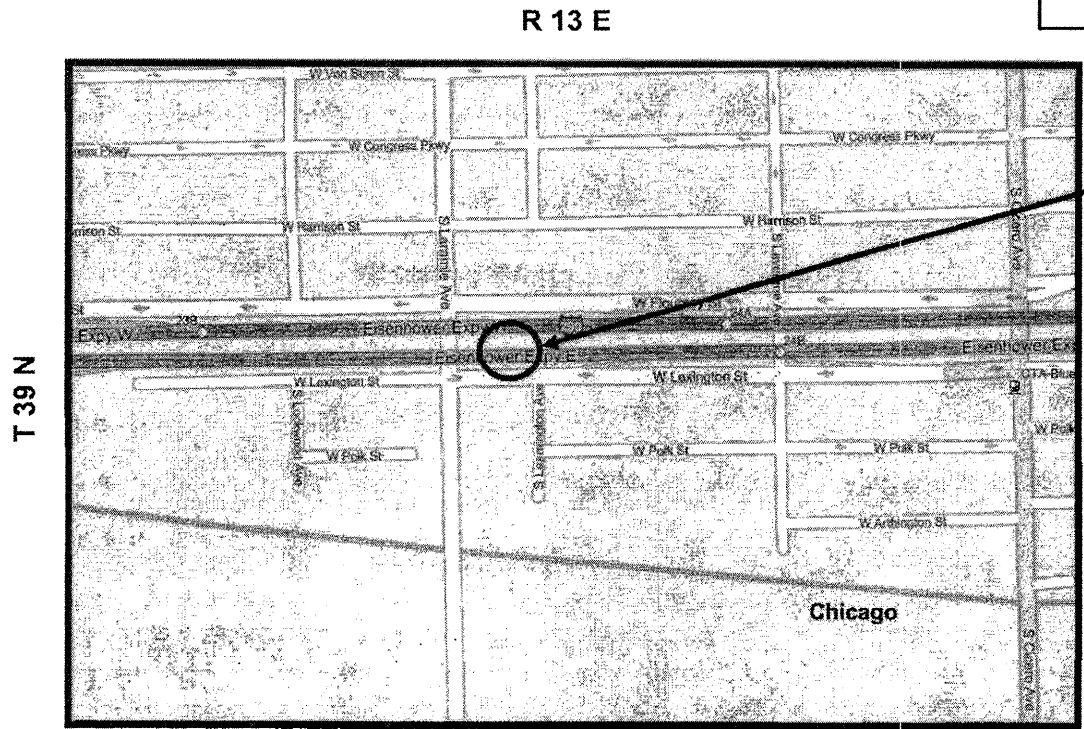
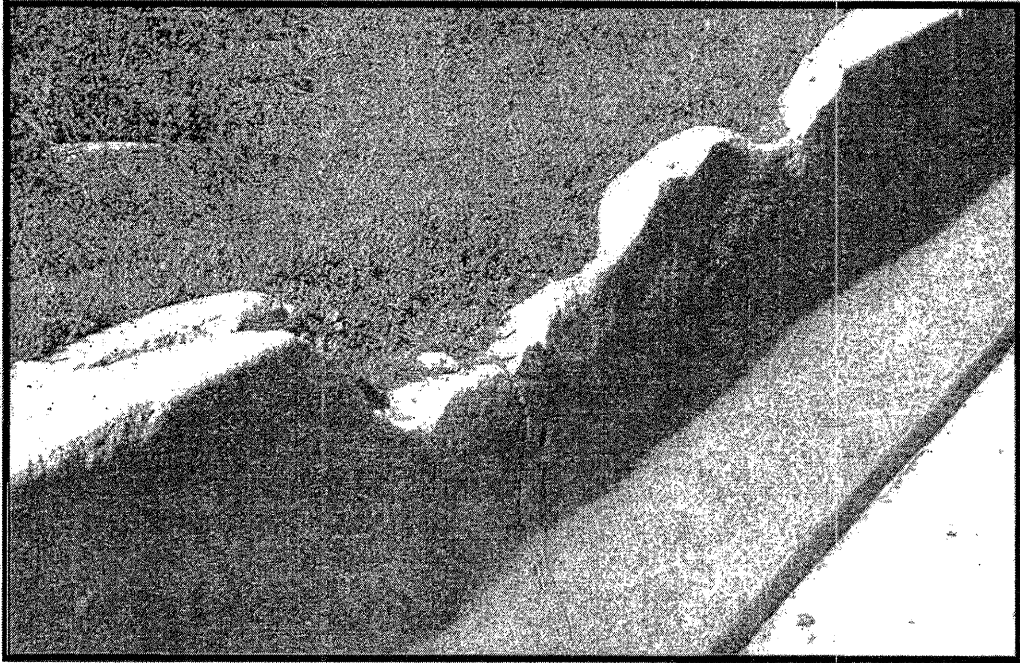


ROUTE	SECTION	COUNTY	TOTAL SHEETS	SHEET NUMBER
VARIOUS	2008-038 I	VARIOUS	20	15

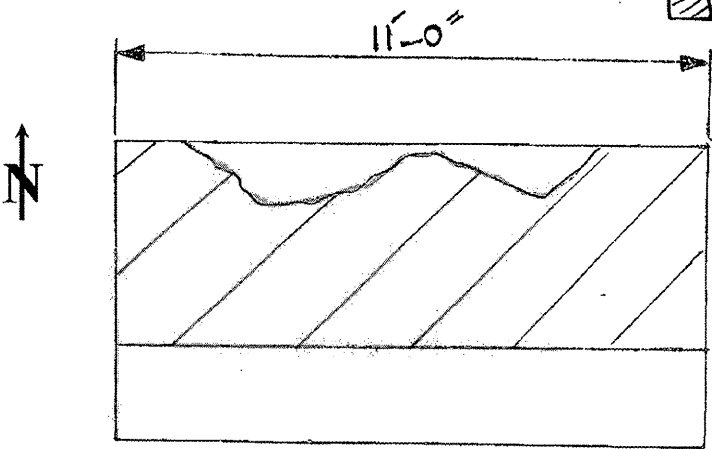
Contract 60E79



CITY OF CHICAGO
OAK PARK TOWNSHIP
COOK COUNTY

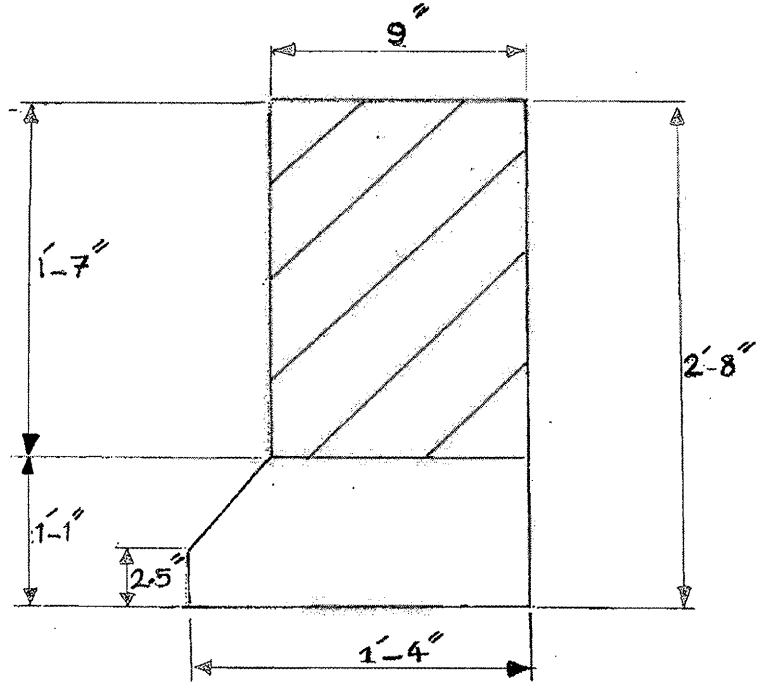


LOCATION 5: I-290 EB JUST EAST OF LARAMIE OVERPASS (ON THE RIGHT)



ELEVATION

Hatched Area Indicates Concrete Removal



SECTION

Half Depth
Barrier Repair
See sheet 6 for more details

~ Concrete Removal (Cu Yd)	0.3
~ Concrete Structure (Cu Yd)	0.5
For Information Only	

TRAFFIC DATA:
I-290: SPEED LIMIT = 55 MPH
2006 ADT = 209,900

ILLINOIS DEPARTMENT OF TRANSPORTATION

LOCATION: 5
I-290 @ LARAMIE