

F.A.P. RTE.	SECTION	COUNTY	TOTAL SHEETS	SHEET NO.
870	2008-044 I	DUPAGE	8	1
FED. ROAD DIST. NO.		ILLINOIS	CONTRACT NO. 60E88	

STATE OF ILLINOIS
DEPARTMENT OF TRANSPORTATION
DIVISION OF HIGHWAYS

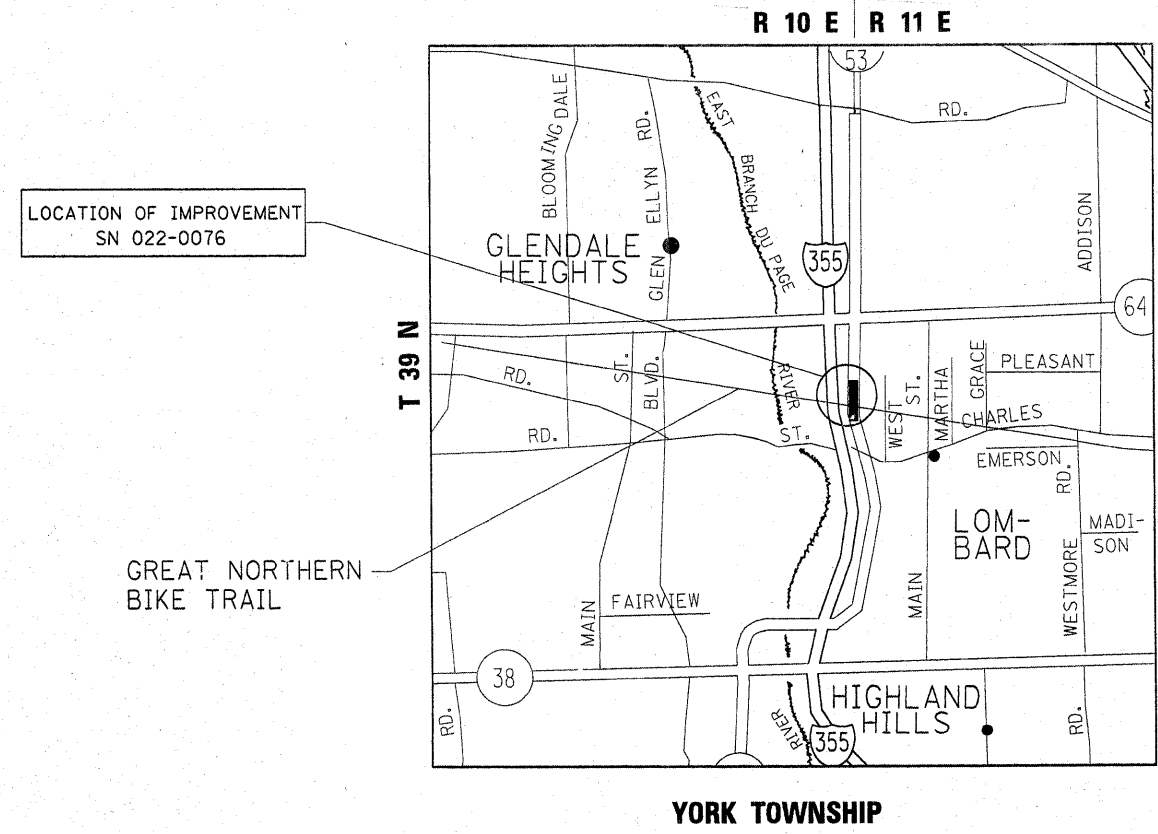
PROPOSED HIGHWAY PLANS

FOR INDEX OF SHEETS, SEE SHEET NO. 2

THE PROJECT IS LOCATED IN THE VILLAGE OF LOMBARD

**F.A.P ROUTE 870: IL 53 (COLUMBINE AVE.)
OVER GREAT NORTHERN BIKE TRAIL
SECTION: 2008-044 I
BRIDGE JOINT REPAIR AND BEARING REPLACEMENT
DUPAGE COUNTY
C-91-534-08**

D-91-534-08



TRAFFIC DATA

2006 ADT = 15400
POSTED SPEED LIMIT = 40 MPH

J.U.L.I.E.
JOINT UTILITY LOCATION INFORMATION FOR EXCAVATION
1-800-892-0123
OR 811

PROJECT ENGINEER ROBERT BORO
PROJECT MANAGER KEN ENG (847) 705-4247

CONTRACT NO. 60E88

STATE OF ILLINOIS
DEPARTMENT OF TRANSPORTATION
DIVISION OF HIGHWAYS

SUBMITTED October 27, 2008

Diana M. O'Keefe
DEPUTY DIRECTOR OF HIGHWAYS, REGION ENGINEER

December 5, 2008
Eric E. Haran
ENGINEER OF DESIGN AND ENVIRONMENT

December 5, 2008
Christine M. Reed
DIRECTOR OF HIGHWAYS, CHIEF ENGINEER

**PRINTED BY THE AUTHORITY
OF THE STATE OF ILLINOIS**

INDEX OF SHEETS

<u>SHEET NO.</u>	<u>DESCRIPTION</u>
1	COVER SHEET
2	INDEX OF SHEETS, STANDARDS AND GENERAL NOTES
3	SUMMARY OF QUANTITIES
4-7	BRIDGE REPAIRS
8	TRAFFIC CONTROL AND PROTECTION FOR SIDE ROADS, INTERSECTIONS AND DRIVEWAYS (TC-10)

LIST OF STATE STANDARDS

<u>STANDARD NO.</u>	<u>DESCRIPTION</u>
701426-03	LANE CLOSURE, MULTI-LANE, INTERMITTENT OR MOVING OPERATION, FOR SPEED > 45 MPH
701606-06	URBAN LANE CLOSURE, MULTILANE, 2W WITH MOUNTABLE MEDIAN
701801-04	LANE CLOSURE MULTILANE 1W OR 2W CROSSWALK OR SIDEWALK CLOSURE
701901-01	TRAFFIC CONTROL DEVICES

GENERAL NOTES

BEFORE STARTING ANY EXCAVATION, THE CONTRACTOR SHALL CALL "JULIE" AT 800-892-0123 OR 811 FOR FIELD LOCATIONS OF BURIED ELECTRIC, TELEPHONE AND GAS FACILITIES. (48 HOUR NOTIFICATION IS REQUIRED)

THE CONTRACTOR SHALL COORDINATE CONSTRUCTION ACTIVITIES WITH UTILITY COMPANIES AND VILLAGE OF LOMBARD.

THE CONTRACTOR WILL NOT BE ALLOWED TO SET UP A YARD OR FIELD OFFICE ON STATE PROPERTY WITHOUT WRITTEN PERMISSION FROM THE DEPARTMENT.

THE CONTRACTOR SHALL CONTACT THE DISTRICT ONE TRAFFIC CONTROL SUPERVISOR AT 847-705-4151. A MINIMUM OF 72 HOURS IN ADVANCE OF BEGINNING WORK.

THESE PLANS HAVE BEEN PREPARED FROM NOTES RECEIVED FROM BRIDGE INSPECTORS

DO NOT SCALE PLAN FOR CONSTRUCTION DIMENSIONS

IT SHALL BE THE CONTRACTOR'S RESPONSIBILITY TO VERIFY ALL DIMENSIONS AND CONDITIONS EXISTING IN THE FIELD PRIOR TO CONSTRUCTION AND ORDERING OF MATERIALS.

THE CONTRACTOR SHALL BE REQUIRED TO PROVIDE ACCESS TO ABUTTING PROPERTY AT ALL TIMES DURING THE CONSTRUCTION OF THIS PROJECT.

FILE NAME = c:\projects\dl53408\design.ee.dgn	USER NAME = abebawa	DESIGNED -	REVISED -	STATE OF ILLINOIS DEPARTMENT OF TRANSPORTATION	INDEX OF SHEETS, STATE STANDARDS & GENERAL NOTES	F.A.P. RTE.	SECTION	COUNTY	TOTAL SHEETS	SHEET NO.	
		DRAWN -	REVISED -			870	2008-044 I	DUPAGE	8	2	
		CHECKED -	REVISED -			CONTRACT NO. 60E88					
		DATE -	REVISED -			SCALE:	SHEET NO. OF SHEETS	STA. TO STA.	FED. ROAD DIST. NO.	ILLINOIS FED. AID PROJECT	

CONTRACT NO. 60E88

SUMMARY OF QUANTITIES			TOTAL QUANTITIES	CONSTRUCTION TYPE CODE				
CODE NO	ITEM	UNIT		URBAN				
50500405	FURNISHING AND ERECTING STRUCTURAL STEEL	POUND	2460	2460				
50500715	JACK AND REMOVE EXISTING BEARINGS	EACH	20	20				
52100010	ELASTOMERIC BEARING ASSEMBLY, TYPE I	EACH	10	10				
52100020	ELASTOMERIC BEARING ASSEMBLY, TYPE II	EACH	10	10				
52100520	ANCHOR BOLTS, 1"	EACH	40	40				
67100100	MOBILIZATION	L SUM	1	1				
70102625	TRAFFIC CONTROL AND PROTECTION, STANDARD 701606	L SUM	1	1				
70102640	TRAFFIC CONTROL AND PROTECTION, STANDARD 701801	L SUM	1	1				
X0322467	TEMPORARY INFORMATION SIGNING FOR LANE CLOSURE	SQ FT	48	48				
X0323076	SILICONE JOINT SEALER, 1 3/4"	FOOT	55	55				
X0323077	SILICONE JOINT SEALER, 2 3/4"	FOOT	55	55				

SUMMARY OF QUANTITIES			TOTAL QUANTITIES	CONSTRUCTION TYPE CODE				
CODE NO	ITEM	UNIT						

10/28/2008 10:28:15 AM

REVISIONS	
NAME	DATE

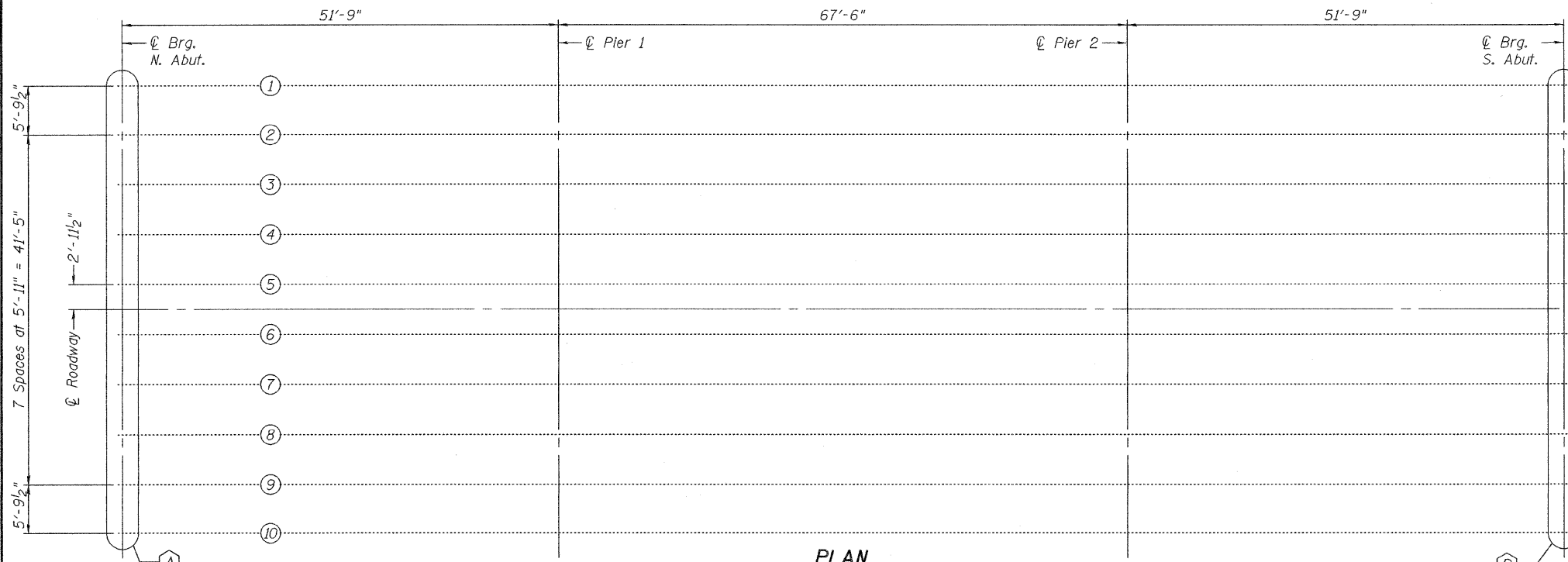
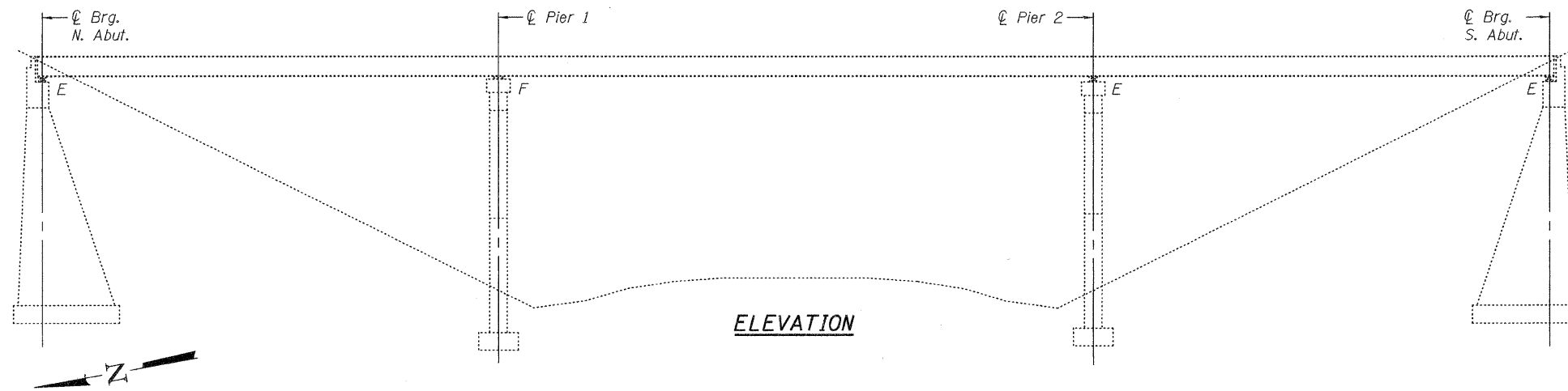
ILLINOIS DEPARTMENT OF TRANSPORTATION
SUMMARY OF QUANTITIES

PLOT DATE: 10/28/2008

STATE OF ILLINOIS
DEPARTMENT OF TRANSPORTATION

GENERAL NOTES

All structural steel shall conform to AASHTO Classification M-270 Gr. 36, unless otherwise noted.
 Plan dimensions and details relative to existing plans are subject to nominal construction variations. The Contractor shall field verify existing dimensions and details affecting new construction and make necessary approved adjustments prior to construction or ordering of materials. Such variations shall not be cause for additional compensation for a change in scope of the work, however, the Contractor will be paid for the quantity actually furnished at the unit price bid for the work.
 Cost of removal and re-installation of all members necessary to complete the work as detailed on the plans and as specified in the Special Provisions shall be included with Furnishing and Erecting Structural Steel.
 The existing structural steel coating contains lead. The Contractor shall take appropriate precautions to deal with the presence of lead on this project.
 Existing structural steel that will be in contact with new structural steel shall be cleaned and painted prior to erection as required by the Special Provision "Cleaning and Painting Contact Surface Areas of Existing Steel Structures".
 All structural steel shall be shop painted with the inorganic zinc rich primer per AASHTO M300, Type 1. Cost included with Furnishing and Erecting Structural Steel.
 If the analysis submitted to the Contractor for the jacking/temporary support system to be used shows temporary stiffeners are required to prevent web crippling or buckling, the stiffeners shall be steel and bolted to the web. If stiffeners are not required, hardwood timbers shall be installed tightly between the top and bottom flange to prevent flange rotation.



PLAN

- (A) Existing bearings to be removed and replaced with Elastomeric Type I New Silicone Joint Sealer
- (B) Existing bearings to be removed and replaced with Elastomeric Type II New Silicone Joint Sealer

TOTAL BILL OF MATERIAL

ITEM	UNIT	QUANTITY
Jack and Remove Existing Bearings	Each	20
Elastomeric Bearing Assembly Type I	Each	10
Elastomeric Bearing Assembly Type II	Each	10
Furnishing and Erecting Structural Steel	Pound	2,460
Anchor Bolts, 1"φ	Each	40
Silicone Joint Sealer, 1 3/4"	Foot	55
Silicone Joint Sealer, 2 3/4"	Foot	55

For Joint details see
Sheets 3 and 4 of 4.

**PLAN AND ELEVATION
SN 022-0076**

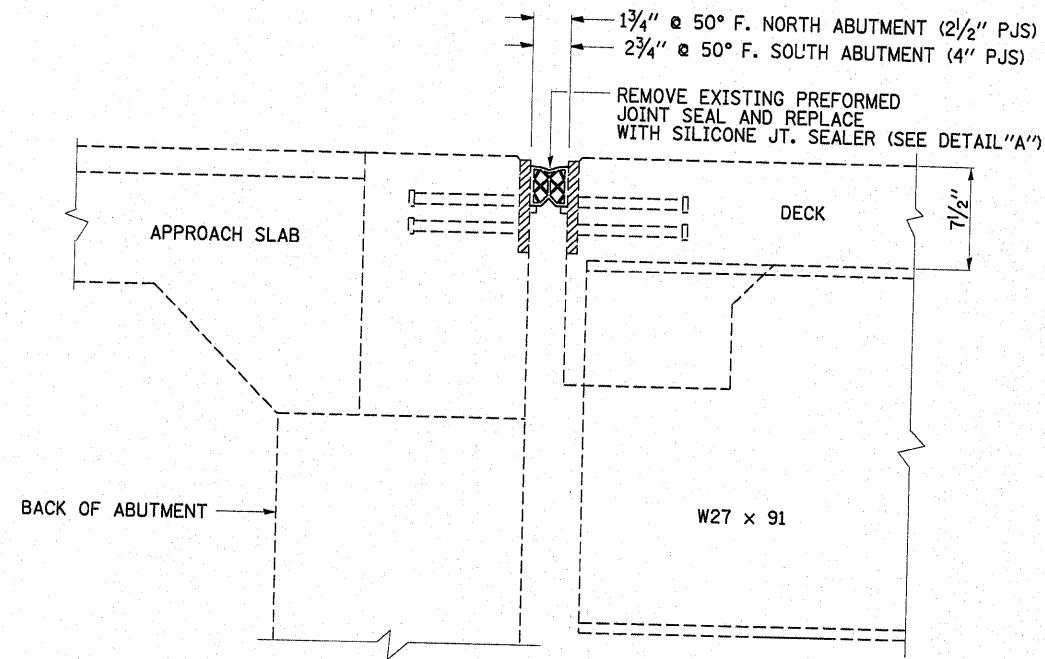
DESIGNED	Victor H. Veliz
CHECKED	John F. Hoff
DRAWN	Drew Christopher
CHECKED	JES VHV

NOVEMBER 19, 2008	
EXAMINED	Carl Pruey
PASSED	Ralph E. Anderson

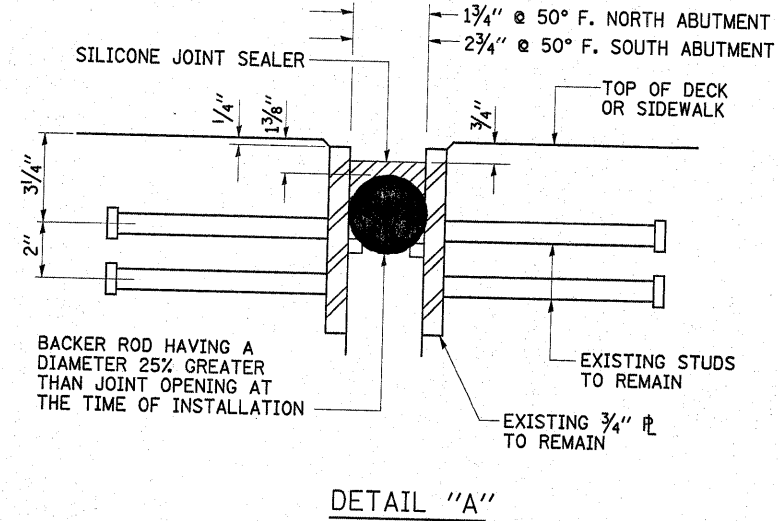


Expires: November 30, 2010

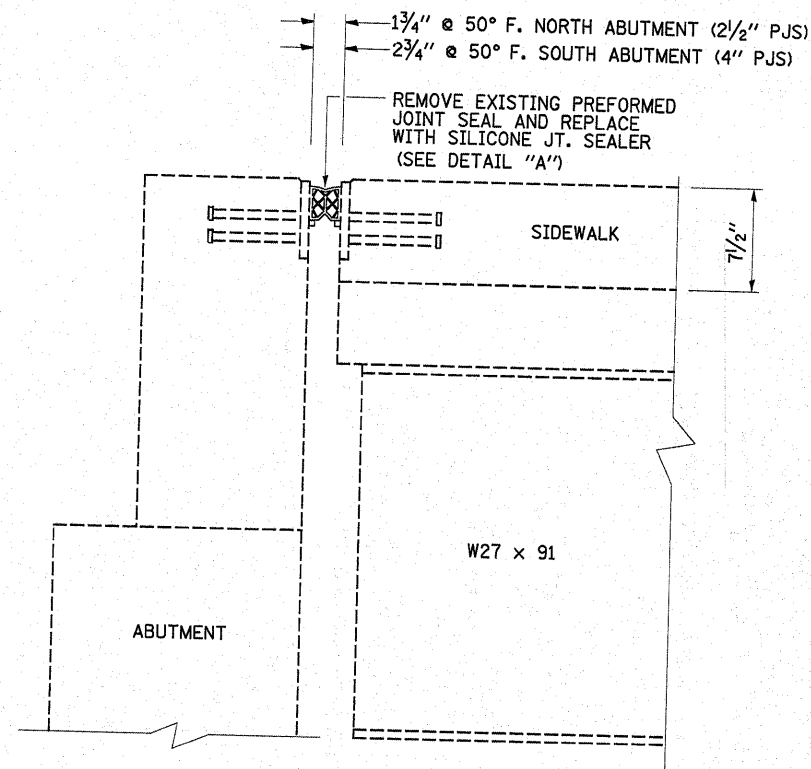
SHEET NO. 1 4 SHEETS	F.A.P. RTE.	SECTION	COUNTY	TOTAL SHEETS	SHEET NO.
	870	533VB-I-DL	DuPage	8	4
FED. ROAD DIST. NO.			ILLINOIS	FED. AID PROJECT	
			CONTRACT NO. 60E88		



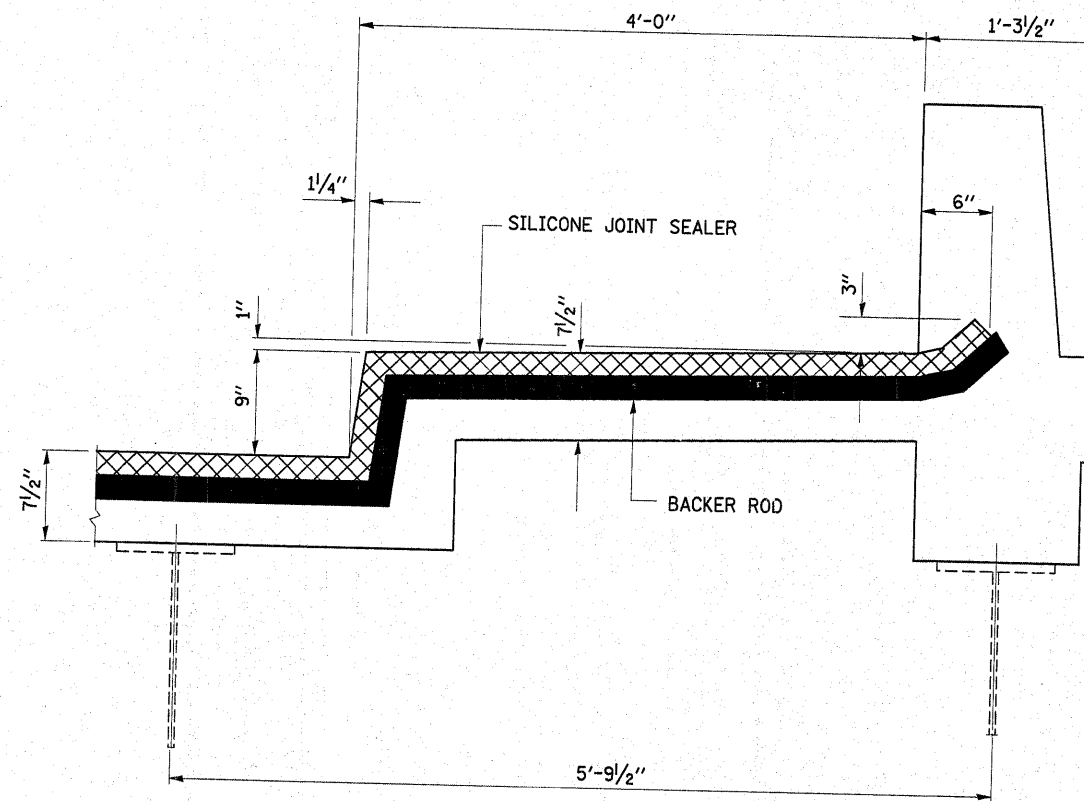
SECTION A-A
EXISTING TRANSVERSE JOINT THRU DECK
(NORTH AND SOUTH ABUTMENT)



DETAIL "A"



SECTION B-B
EXISTING EXPANSION JOINT THRU SIDEWALK
(NORTH AND SOUTH ABUTMENTS)



TYPICAL END OF SEAL TREATMENT AT SIDEWALK

BILL OF MATERIAL

ITEM	UNIT	TOTAL
SILICONE JOINT SEALER, 1 3/4"	FOOT	55
SILICONE JOINT SEALER, 2 3/4"	FOOT	55

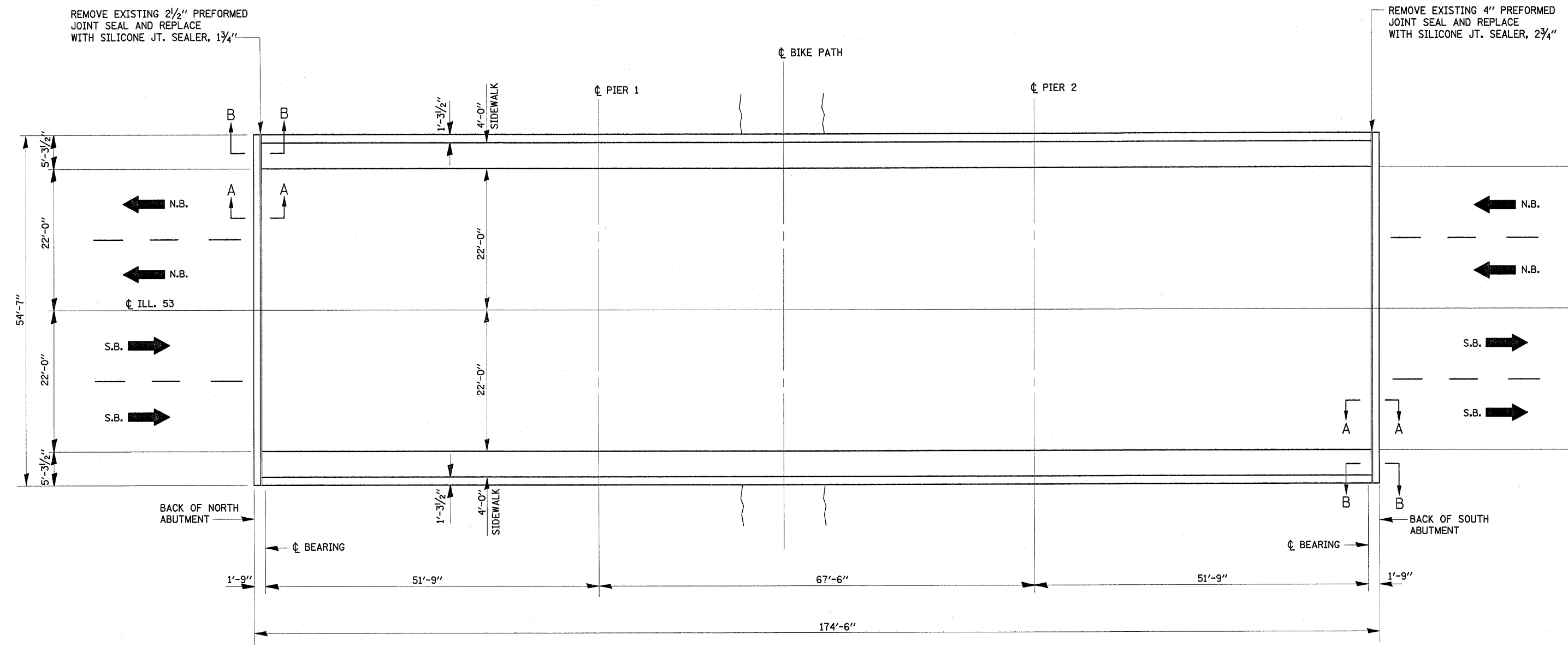
FILE NAME = c:\projects\struct\022-0076.dgn	USER NAME = ebebova	DESIGNED -	REVISED -
		DRAWN -	REVISED -
		CHECKED -	REVISED -
		DATE -	REVISED -

STATE OF ILLINOIS
DEPARTMENT OF TRANSPORTATION

IL 53 (COLUMBINE AVENUE)
OVER GREAT NORTHERN BIKE TRAIL
BRIDGE JOINT REPAIR DETAILS
S.N. 022-0076

SCALE: NONE SHEET NO. 3 OF 4 SHEETS STA. TO STA.

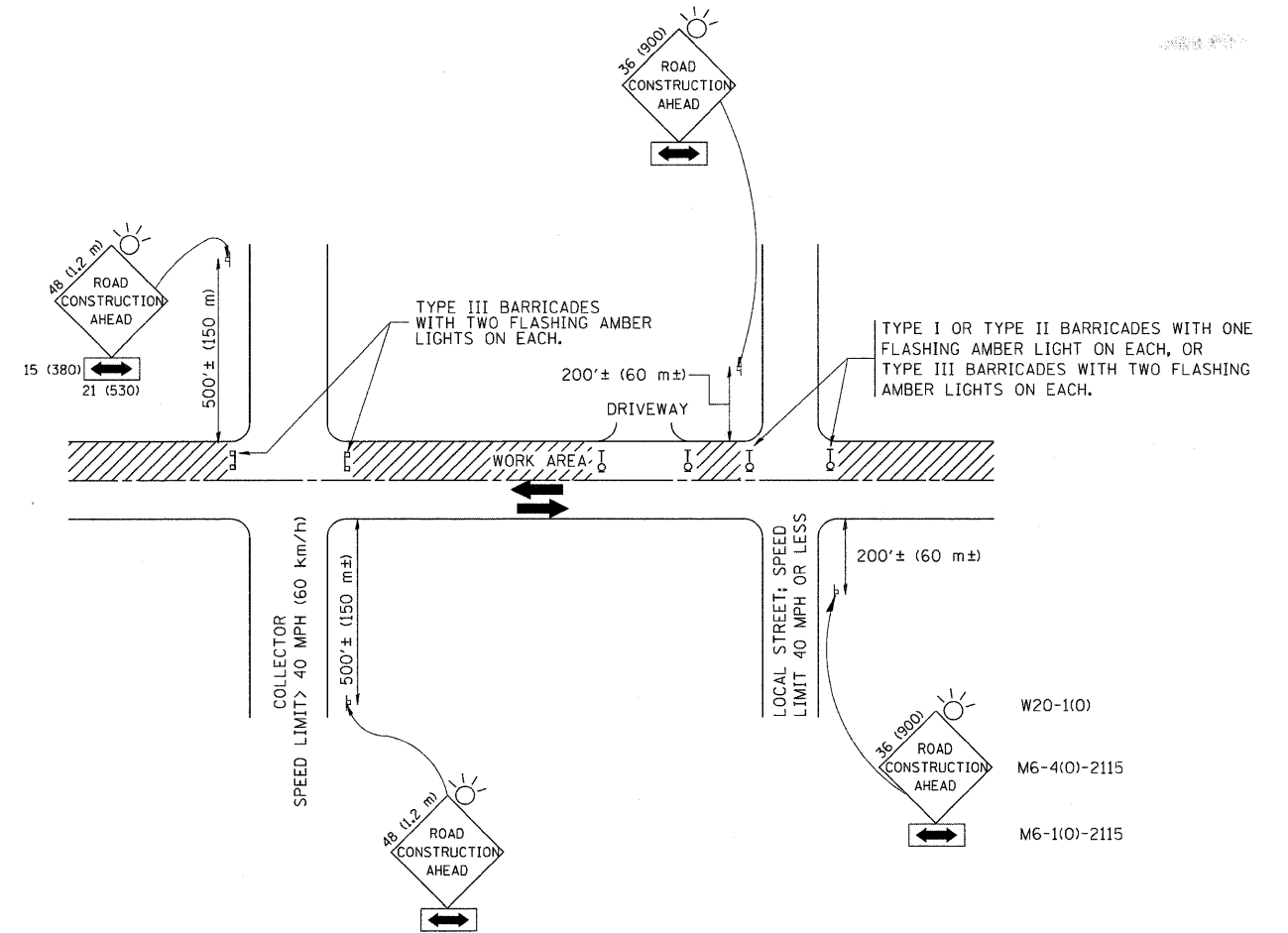
F.A.P. RTE. 870	SECTION 2008-0441	COUNTY	TOTAL SHEETS 8	SHEET NO. 6
CONTRACT NO. 60E88			ILLINOIS FED. AID PROJECT	



PLAN

NOTE:
 - FOR SECTIONS A-A AND B-B
 SEE SHEET 3 OF 4
 - ONLY ONE SIDEWALK MAY BE CLOSED AT A TIME

FILE NAME = o:\projects\struct\022-0076.dgn	USER NAME = abebawa	DESIGNED -	REVISED -	STATE OF ILLINOIS DEPARTMENT OF TRANSPORTATION	IL 53 (COLUMBINE AVENUE) OVER GREAT NORTHERN BIKE TRAIL GENERAL PLAN - BRIDGE JOINT REPAIR S.N. 022-0076		F.A.P. RTE. 870	SECTION 2008-0441	COUNTY DU PAGE	TOTAL SHEETS 8	SHEET NO. 7	
PLOT SCALE = 50.0000' / 1"	CHECKED -	REVISOR -	SCALE: NONE		SHEET NO. 4	OF 4 SHEETS	STA.	TO STA.	CONTRACT NO. 60E88			
PLOT DATE = 10/28/2008	DATE -	REVISOR -	FED. ROAD DIST. NO. ILLINOIS FED. AID PROJECT									



TRAFFIC CONTROL AND PROTECTION FOR SIDE ROADS, INTERSECTIONS, AND DRIVEWAYS

NOTES:

A. FOR NO LANE RESTRICTION ON THE SIDE ROAD OR DRIVEWAYS

1. SIDE ROAD WITH A SPEED LIMIT OF 40 MPH (60 km/h) OR LESS AS SHOWN ON THE DRAWING AND AS DIRECTED BY THE ENGINEER:

a) ONE ROAD CONSTRUCTION AHEAD SIGN 36 x 36 (900x900) WITH A FLASHER AND FLAG MOUNTED ON IT APPROXIMATELY 200' (60 m) IN ADVANCE OF THE MAIN ROUTE.

b) THE CLOSED PORTION OF THE MAIN ROUTE SHALL BE PROTECTED BY BLOCKING WITH TYPE I, TYPE II OR TYPE III BARRICADES, 1/3 OF THE CROSS SECTION OF THE CLOSED PORTION.

2. SIDE ROAD WITH A SPEED LIMIT GREATER THAN 40 MPH (60 km/h) AS SHOWN ON THE DRAWING AND AS DIRECTED BY THE ENGINEER:

a) ONE ROAD CONSTRUCTION AHEAD SIGN 48 x 48 (1.2 m x 1.2 m) WITH A FLASHER MOUNTED ON IT APPROXIMATELY 500' (150 m) IN ADVANCE OF THE MAIN ROUTE.

b) THE CLOSED PORTION OF THE MAIN ROUTE SHALL BE PROTECTED BY BLOCKING WITH TYPE III BARRICADES, 1/2 OF THE CROSS SECTION OF THE CLOSED PORTION.

3. WHEN THE SIDE ROAD LIES BETWEEN THE BEGINNING OF THE MAINLINE SIGNING AND THE WORK ZONE, A SINGLE HEADED ARROW (M6-1) SHALL BE USED IN LIEU OF THE DOUBLE HEADED ARROW (M6-4).

B. FOR A LANE CLOSURE ON A SIDE ROAD OR DRIVEWAY:

USE APPLICABLE PORTIONS OF THE TYPICAL APPLICATION OF TRAFFIC CONTROL DEVICES (STD. 701501, STD. 701606 OR THE APPROPRIATE STANDARD). THE SPACING OF SIGNS AND BARRICADES SHALL BE ADJUSTED FOR FIELD CONDITIONS AS DIRECTED BY THE ENGINEER. THE DIRECTIONAL ARROW SHALL BE COVERED OR REMOVED WHEN NO LONGER CONSISTENT WITH THE SIDE ROAD LANE CLOSURE.

C. ADVANCE WARNING SIGNS ARE TO BE OMITTED ON DRIVEWAY UNLESS OTHERWISE NOTED.

D. THE TRAFFIC CONTROL AND PROTECTION FOR SIDE ROADS, INTERSECTIONS, AND DRIVEWAYS SHALL BE INCIDENTAL TO THE COST OF SPECIFIED TRAFFIC CONTROL STANDARDS OR ITEMS.

All dimensions are in millimeters (inches) unless otherwise shown.

FILE NAME = W:\diststd\22x34\tc10.dgn	USER NAME = gaglionobt	DESIGNED - LHA	REVISED - J. OBERLE 10-18-95
		DRAWN -	REVISED - A. HOUSEH 03-06-96
	PLOT SCALE = 50,000' / IN.	CHECKED -	REVISED - A. HOUSEH 10-15-96
	PLOT DATE = 1/4/2008	DATE - 06-89	REVISED - T. RAMMACHER 01-06-00

STATE OF ILLINOIS
DEPARTMENT OF TRANSPORTATION

TRAFFIC CONTROL AND PROTECTION FOR
SIDE ROADS, INTERSECTIONS, AND DRIVEWAYS

SCALE: NONE SHEET NO. 1 OF 1 SHEETS STA. TO STA.

F.A.P. RTE.	SECTION	COUNTY	TOTAL SHEETS	SHEET NO.
870	2008-041	DuPage	8	8
TC-10			CONTRACT NO. 60E88	
FED. ROAD DIST. NO. 1 ILLINOIS FED. AID PROJECT				