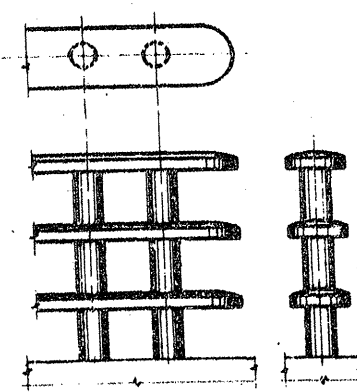
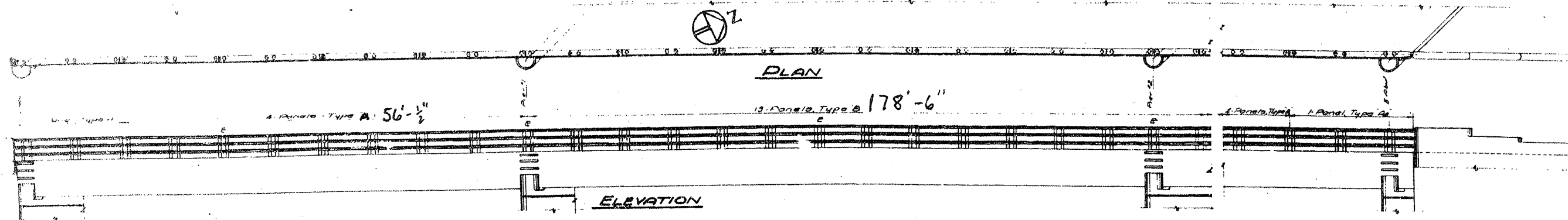
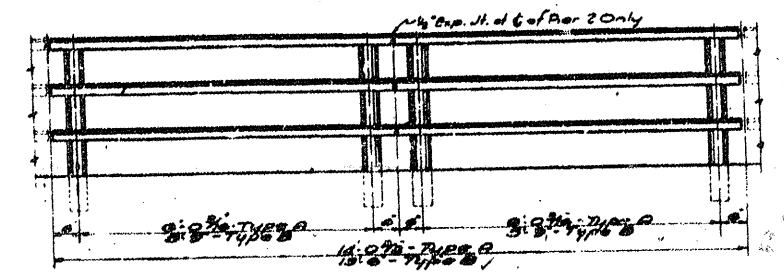


ROUTE VARIOUS	SECTION 2008-051 BP	COUNTY COOK	TOTAL SHEETS 38	SHEET NUMBER 18
------------------	------------------------	----------------	-----------------------	-----------------------

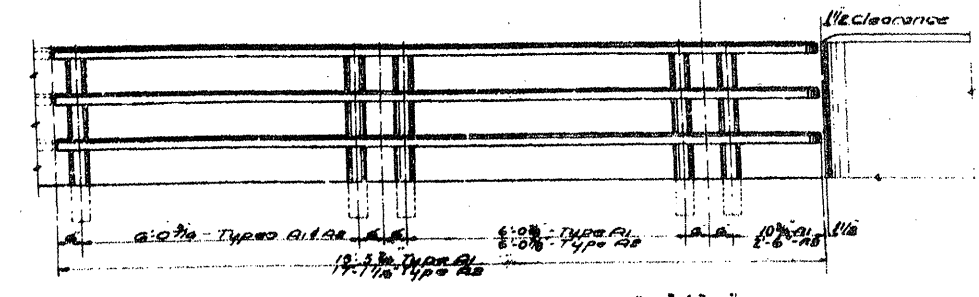
CONTRACT NO. 60F02



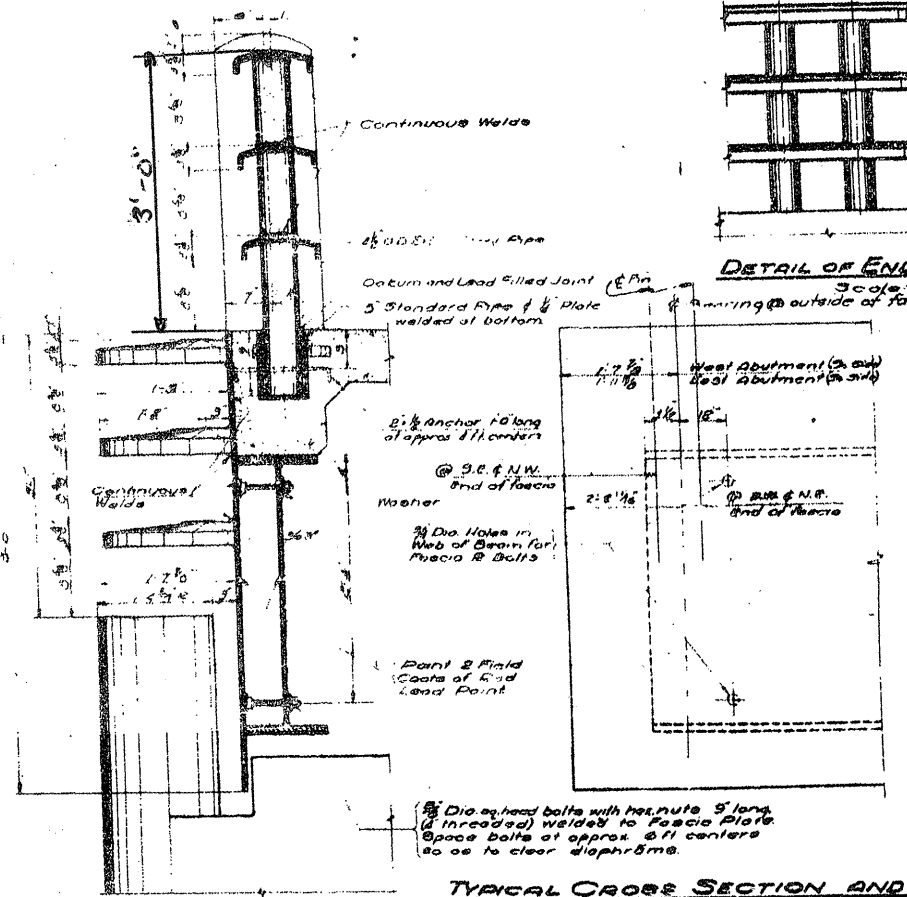
DETAIL OF END PANELS
Scale: 3/4" = 1'-0"



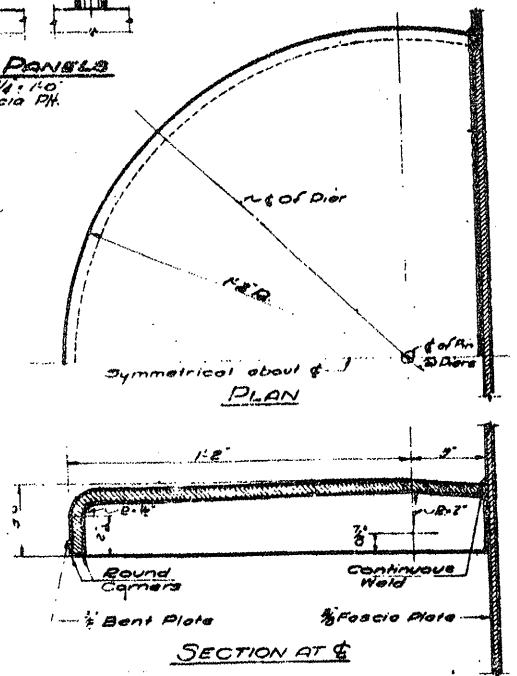
INTERMEDIATE HANDRAIL PANELS - TYPES A & B



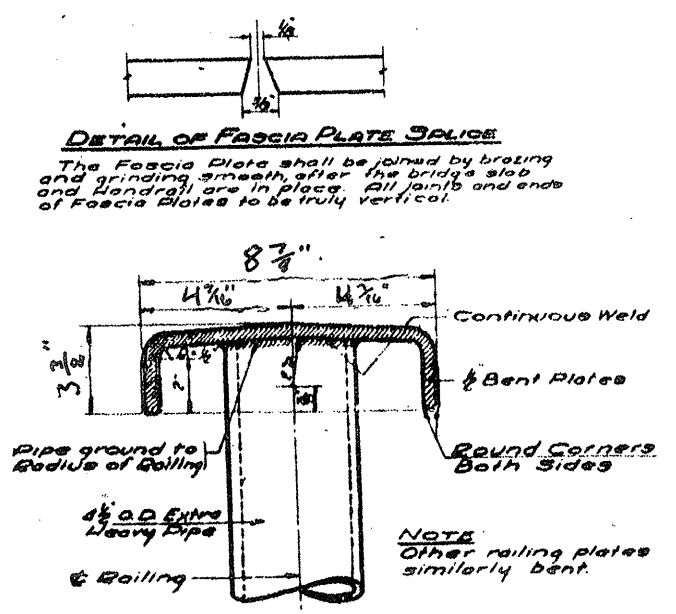
END HANDRAIL PANELS - TYPES A1 & B1



TYPICAL CROSS SECTION AND
DETAIL MOUNTING FASCIA PLATE
Not to Scale

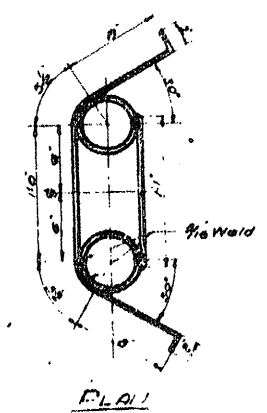


DETAIL OF FIN
Not to Scale



DETAIL OF HANDRAIL AND POST
Not to Scale

DETAIL OF FASCIA PLATE JOINT
The Fascia Plate shall be joined by brazing and grinding smooth after the bridge slab and handrail are in place. All joints and ends of Fascia Plates to be truly vertical.



PLAN

LOCATION NO.3
EXIST. BRIDGE PLANS
GROSS POINT RD. OVER I-94
SN 016-0725