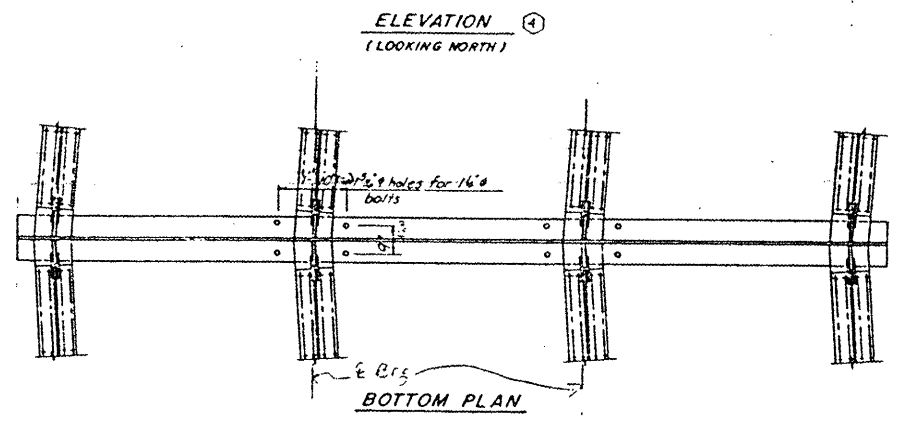
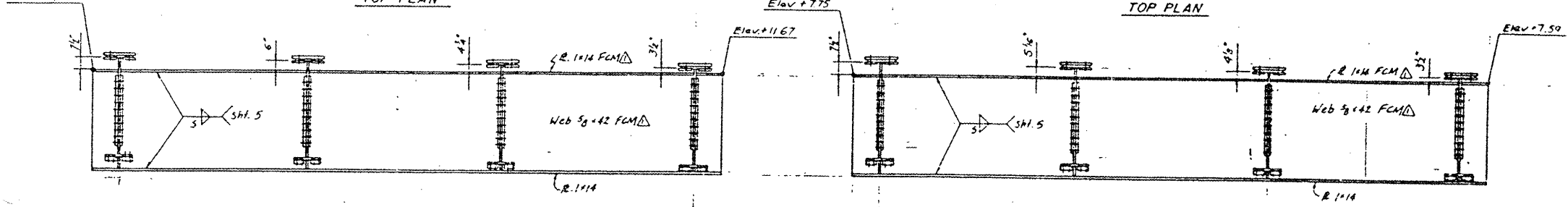
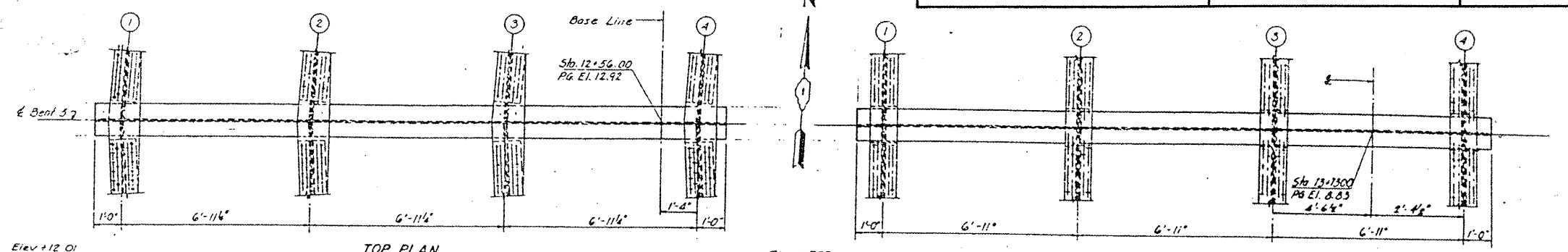
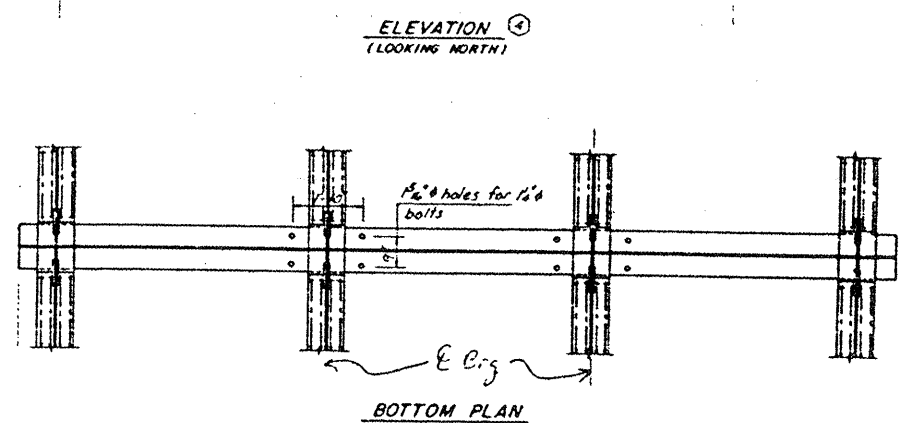


ROUTE	SECTION	COUNTY	TOTAL SHEETS	SHEET NUMBER
VARIOUS	2008-051 BP	COOK	38	35

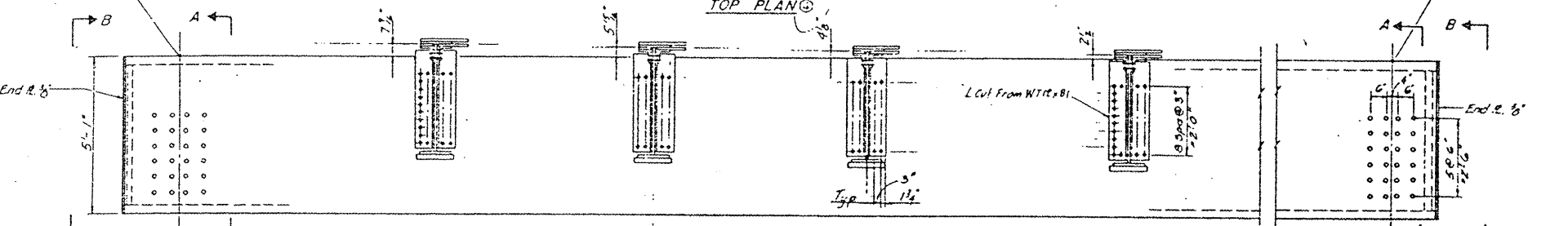
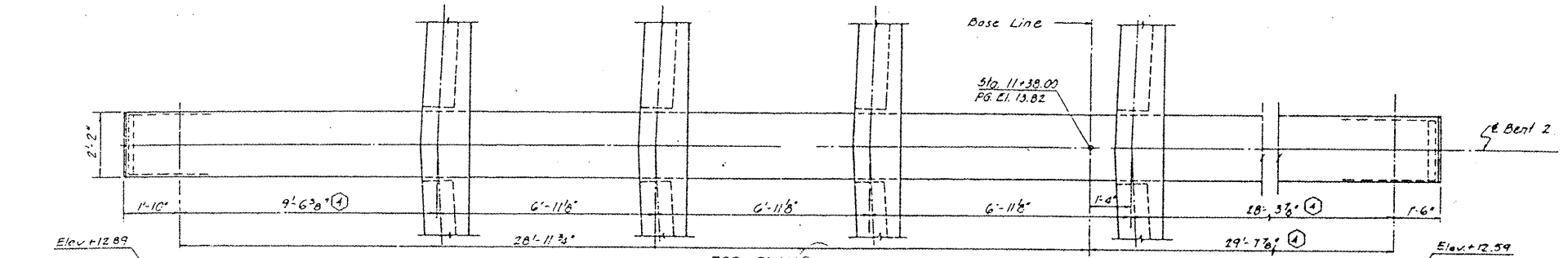
CONTRACT NO. 60F02



BENT NO. 3 - CROSS CAP



BENT NO. 4 - CROSS CAP



BENT NO. 2 - CROSS CAP

SHEET 5 OF 5

**LOCATION NO.7**  
**EXIST. BRIDGE PLANS**  
**TAYLOR ST. RAMP TO NB**  
**I-90/94 SN 016-2535**